

ADLER[®]

ARBEITSMASCHINEN

PRODUCING QUALITY.

SWEEPERS

AUGERS

CONE SPLITTERS

SNOW BLADES

SALT SPREADERS

WALK-BEHIND SWEEPERS

THERMAL WEED CONTROL

DRILL RIGS



PRODUCT RANGE



www.adler-arbeitsmaschinen.de

ADLER Quality:

All ADLER products meet maximum quality criteria. as it is our aim that our products set the standards in excellence.

Material

We only use the best materials for our products: thicker steel plates, bigger sweeper brushes, better tyres: Problem-free functions and sturdy design are more important to us than scrimping on material.

Manufacturing

We at ADLER weld, bolt and join our products with high precision to ensure maximum durability. We protect key components with top-quality primer & powder coating in all the important places. A perfect finish that lasts for years!

Ideas

The quality of ideas that goes into our products is also essential. We research which products our clients really need and develop them. In doing so, we use a modular approach, so that you can combine our products flexibly and adapt them to your individual requirements.

Technology maturity

From the outset, we develop our products to withstand conditions which go above and beyond standard situations. This means that our machines perform well even under the toughest conditions. We test our products thoroughly and even if they work perfectly, we continue to optimise and enhance them.

Service

It goes without saying that we offer perfect service quality. When you experience our service, you'll be convinced.



Our team:

Our wealth of practical experience means that we know how to get work done. That's why ADLER provides you with the perfect work machines that make your daily work easier and more efficient.



Thomas Schmiemann | Executive Manager
The strategist
 has detailed product and market knowledge.

☎ +49(0) 2573 979 99 10
 ✉ t.schmiemann@adler-arbeitsmaschinen.de



Rainer Hackenfort | Executive Manager
As an experienced
 banking business manager, this lateral thinker organises the financial area.

☎ +49(0) 2573 979 99 20
 ✉ r.hackenfort@adler-arbeitsmaschinen.de



Tobias Hackenfort | Sales
The all-rounder
 with experience in procurement, sales and construction.

☎ +49(0) 2573 979 99 25
 ✉ t.hackenfort@adler-arbeitsmaschinen.de



Stefan Ostendorf | Sales Service
The plougher
 is valued for his rapid processing and completion in Sales Service.

☎ +49(0) 2573 979 990
 ✉ s.ostendorf@adler-arbeitsmaschinen.de



Achim Weinkauff | Spare Parts Sales
The parts procurer
 will supply you with spare parts quickly and simply.

☎ +49(0) 2573 979 99 19
 ✉ a.weinkauff@adler-arbeitsmaschinen.de

The products:

Sweeper K 560	4
Sweeper K 600	6
Sweeper K 750	8
Sweeper K 950	10
Sweeping Scoop KS 600/750	12
Scraper Attachment KV	14
Earth auger serie-E	16
Cone splitter serie-SP	18
Snow blade serie S	20
Snow blade serie V	22
Salt spreader ST-E	24
Walk-Behind Sweeper HK 5.5 / 6.5	26
Weed brush HW 5.5	28
Weed brush 5.5 3D	30
Attachment weed brush serie-W	32
Mode of operation ADLER Heater	34
ADLER Heater Flexi	36
ADLER Heater 500	38
ADLER Heater 1000 / 1400	40
Mounting versions	42
Drilling rigs serie-B	44



Markus Reckels | Technology
The developer
 is valued for his reliable, high-quality work.

☎ +49(0) 2573 979 99 30
 ✉ m.reckels@adler-arbeitsmaschinen.de



Peter Richters | Technology
The weed specialist
 develops machines for effective weed control.

☎ +49(0) 2573 979 9915
 ✉ p.richters@adler-arbeitsmaschinen.de



Klaus Iker | Production Management
As the Production Manager, the organiser
 ensures production runs smoothly.

☎ +49(0) 2573 979 99 21
 ✉ k.iker@adler-arbeitsmaschinen.de

Take it to the street ...

K 560 Sweeper

- Mechanically/optionally hydraulically operated sweeper
- Easy sweeper roller adjustment
- Low net weight
- Extremely robust design



Mechanically driven

Profile ADLER sweeper K 560

The perfect cleaning solution for your municipality ...

Clear streets and public places easily from dirt, fallen leaves or snow. The ADLER K 560 is the economical choice for municipal use, horticulture or landscape gardening and service providers in the property management sector. Thanks to its lightweight construction, this mechanically driven sweeper (which is also optionally available with hydraulic drive) is perfect for mounting on municipal tractors and small carrier vehicles.

Accessories:

- Hydraulic swivel mechanism for flexible simple sweeping
- Large capacity hopper with wear-resistant sweep edge, third support wheel and hydraulic emptying system as a standard feature with simple sweeping mode
- Water injection system (120 l) for dust control during sweeping (water tank mounted on rear of vehicle)
- Large rotary side brushes for sweeping edges, perfect for sweeping gutters (hydraulically driven)
- Reinforced heavy-duty swivel castor Ø 200 mm x 50 mm
- Splash guard mechanically height-adjustable
- Side marker lights, LED, 12/24 V
- Customised colour as per RAL colour chart (standard: RAL 2002)

ADLER K 560 Sweeper		135	150	180
Working width straight/angled	cm	135/128	150/143	180/171
Total width	cm	151	166	196
Brush diameter	mm	560	560	560
Brush speed	1/min.	540-2,200		
Weight, including mount/hopper	kg	190/243	205/261	235/296
Hopper capacity	litres	128	142	173
Area performance	m ² /h	10,800	12,000	14,400



Rotary side brush in use



K 560 with adjustable splash guard



Large angle of breakage in the machine frame – ideal for clearing snow



Simple sweeping mode as a standard feature if you require a hopper



Brush speed and direction, and transmission position are adjustable

A clean sweep...

Sweeper K 600

- 600 mm brush diameter
- Simple sweeping mode
- Universal mount system
- Easy sweeper roller readjustment
- Hydraulic emptying system fitted as standard feature
- 2 large swivel castors Ø 250 mm
- With overrun protection as standard feature

Developed
& produced in
Germany



Universal mount system

Profile ADLER sweeper K 600

A clever solution that doesn't cost the earth ...

Thanks to our modular system, you can also re-fit your ADLER K 600 with items from a large range of accessories at any time.

Accessories:

- Hydraulic swivel mechanism for flexible simple sweeping
- Large-volume hopper, including wear-resistant sweep edge, a third support wheel, plus a hydraulic emptying system fitted as standard
- The hoppers all feature hydraulic simple sweeping mode
- Attachment mount suitable for front plate, DIN 76060, Size 3 or 5, including hydraulic cylinder and levelling system for optimum adjustment to ground surface
- Protected internal motor
- Water injection system (120/240 l) for dust control
- Rotary side brushes, 600 mm, for sweeping edges – perfect for sweeping gutters
- Reinforced heavy-duty swivel castor Ø 250 mm x 80 mm
- Scraper attachment
- Flow control valve 3/4" for hydraulic fluid volumes from 75 l/min. to 120 l/min.
- Flow control valve 1" for hydraulic fluid volumes of 120 l/min. and above
- Side marker lights, LED, 12/24 V
- Customised colour as per RAL colour chart (standard: RAL 2002)

ADLER K 600 Sweeper		135	150	180	210	240	270
Working width, straight/angled	cm	135/127	150/141	180/169	210/197	240/226	270/254
Total width	cm	166	181	210	240	269	299
Brush diameter	mm	600	600	600	600	600	600
Required hydraulic pressure & volume		160 bar / >25 l/min.			160 bar / >40 l/min.		
Weight simple sweeping/hopper	kg	290/378	320/413	345/448	370/472	395/517	420/550
Hopper capacity	litres	191	212	255	297	340	382
Area performance	m ² /h	10,800	12,000	14,400	16,800	19,200	21,600



Optional rotary side brush and water injection system



Reinforced, heavy-duty swivel castors

Suitable for attachment on front and rear of tractor



Brushes are continuously adjustable



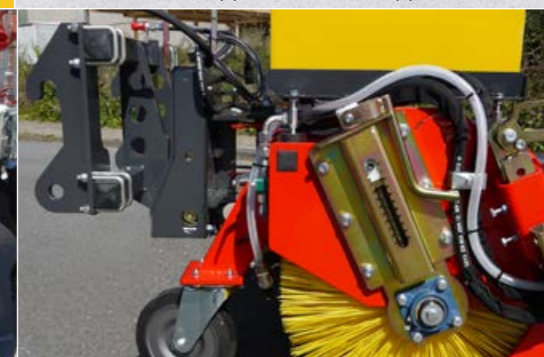
Simple sweeping mode, hydraulic hopper emptying system and third support wheel on hopper



K 600 Scraper Attachment without hopper



Farm loader attachment with 3D levelling system



Wheel loader mount with levelling system based on castor guide

... it'll sweep you
off your feet!

Sweeper K 750

- 750 mm brush diameter
- 2 heavy-duty swivel castors Ø 400 mm
- With overrun protection as standard feature
- Internal hydraulic motor
- Suspended sweeper roller
- Universal mount system
- In-house production



Front and rear attachment possible

Profile ADLER sweeper K 750

A clean sweep with ADLER

Further highlights include the high-quality heavy-duty swivel castor, which enable the ADLER K 750 to ride over potholes, railway tracks and rough terrain without any difficulty. As optional extras, you can fit your machine with a large-capacity hopper, use side brushes to sweep curbs and gutters, or easily reduce dust levels during sweeping thanks to our water injection system.

Accessories:

- Hydraulic swivel mechanism for flexible simple sweeping
- Large capacity hopper with wear-resistant sweep edge and a heavy-duty swivel castor (400 mm x 100 mm)
- The hopper comes with a hydraulic simple sweeping mode as a standard feature
- Attachment mount suitable for front plate, DIN 76060 Size 3 or 5, including hydraulic cylinder and levelling system for optimum adjustment to ground surface
- Water injection system 240 l for dust control
- Rotary side brushes for sweeping edges – perfect for sweeping gutters
- Scraper attachment
- Side marker lights, LED, 12/24 V
- Flow control valve 1" for hydraulic fluid volumes of 90 l/min. and above
- Customised colour as per RAL colour chart (standard: RAL 2002)

ADLER K 750 Sweeper		210	240	270	300	330
Working width straight/angled	cm	210/198	240/228	270/257	300/285	330/313
Total width	cm	233	262	292	321	351
Brush diameter	mm	750	750	750	750	750
Required hydraulic pressure & volume		160 bar / >35 l/min.			160 bar / >40 l/min.	
Weight, including mount/hopper	kg	499/690	596/800	674/890	748/995	875/1,135
Hopper capacity	litres	390	450	500	555	610
Area performance	m ² /h	16,800	19,200	21,600	24,000	26,400
For carrier vehicles with operating weight	t	3+	4+	5+	6+	6+



Optional rotary side brush and 240-l water tank



K 750 suitable for front and rear attachment



Simple sweeping mode and 750 mm brush diameter as standard features



K 750 with hopper and scraper attachment



Hydraulic hopper emptying system



Three large swivel castors 400 mm x 100 mm

... It's size-dependent!

Sweeper K 950

- Huge surface performance due to the combination of 950 mm brush diameter and a working width of up to 390 cm
- Two internal hydraulic motors with high-pressure sealing
- Large supporting wheels Ø 460 x 125 mm (solid rubber)
- Short attachment due to intelligent mounting system with 3D compensation and integrated hydraulic swivel
- Suspended brush: Top sweeping results, long brush service life



Profile ADLER sweeper K 950

The ADLER for huge surface performance!

The K 950 from ADLER is one of Europe's largest sweepers. With a brush diameter of almost one metre, rotational speeds are generated which even under the most extreme conditions – as, for example, use in quarrying – ensure clean results for your operation. Thanks to its 46 cm large heavy-duty swivel castors, the ADLER K 950 also masters rough terrain problem-free. The highly comfortable control of all its hydraulic and electric functions from the cabin will inspire you. For example, you can use the series hydraulic swivel or simply only fold the side brush down and switch it on.

Accessories:

- High-volume dirt collection hopper with two integrated heavy-duty swivel castors (Ø 460 x 125 mm) including electrically switchable simple sweeping mode and wear-resistant sweep edge
- 600 litre water injection system with two electrical pumps (12/24 volt)
- Hydraulic foldable and connectible side brush, Ø 900 mm (can be used on the left- or right-hand side)
- Splash guard specially developed for the wide working width (adjustable)
- Third support wheel - advantageous for independent sweeping
- Side marker lights, LED (12/24 volt) and/or warning flags
- Flow control valve for the hydraulic oil volume above 250 l/min
- Customised colour according to RAL colour chart (standard: RAL 2002)

ADLER K 950 Sweeper		300	330	360	390
Working width straight/angle	cm	300/275	330/304	360/334	390/363
Total width	cm	327	357	386	416
Brush diameter	mm	950	950	950	950
Required hydraulic pressure & volume		160 bar / >65 l/min			
Weight, including mount/hopper	kg	2010/2660	2055/2725	2100/2790	2150/2860
Hopper capacity	litres	1.100	1.210	1.320	1.425
Area performance	m ² /h	24.000	26.400	28.800	31.000
For carrier vehicles with operating weight	t	12+		15+	



If you go for a water-spray system, then take the right one: the side brush is always equipped with a spray nozzle.



All-in: hydraulic angling, 3-D levelling, height indicators and the innovative ADLER mounting bracket.



The function "simple sweeping" can be activated by a remote control.



Optional hydraulic side brush, can be switched on/off (Ø 900 mm).



The particular "deep" hopper increases sweeping capacity. Of course, incl. hydraulic emptying (standard).



Four big, stable wheels (460 x 125 mm) guarantee a perfect bottom guidance.

Keep things spinning ...

KS 600/750 Sweeping Scoop

- 600 or 750 mm sweeper roller
- Wear-resistant cutting edges & reinforced steel with heavy-duty truncated domes
- Cutting edges fitted at an angle at side
- Convenient roller adjustment
- Interior hydraulic motor, protected on the sides

Developed
& produced in
Germany



Profile ADLER HS 600/750 Sweeping Scoop

The ultimate street sweeper.

The KS 600/750 Sweeping Scoop demonstrates its true strengths when used under tough road construction conditions. The wide brush diameter ensures that the device powerfully sweeps right into groove joints and other difficult spots.

Fitted at an angle as standard, easily interchangeable cutting edges made of wear-resistant material and heavy-duty truncated domes ensure that the sweeping scoop has a very long service life.

Robust, durable and versatile, the KS 600/750 is the ideal all-rounder for daily use under extreme conditions.

Accessories:

- Steel guide rollers (Ø 125 mm) on the rear of the scoop
- Hydraulic folding
- Adjustable dust flap
- Rotary side brush
- Water injection system
- As always with ADLER, with top-quality primer & powder coating

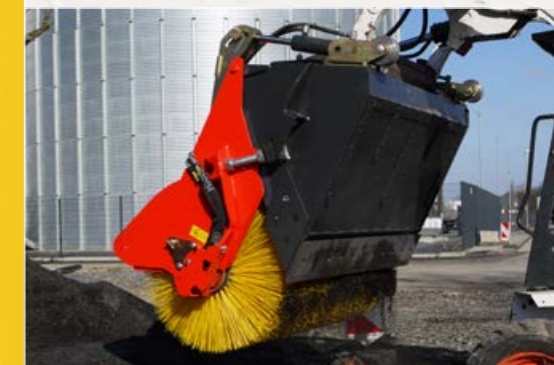
ADLER KS 600/750 Sweeping Scoop		150	165	180	210	240
Working width	cm	150	165	180	210	240
Total width	cm	174	189	204	234	264
Brush diameter	mm	600	600	600	750	750
Required hydraulic pressure & volume		160 bar / >30 l/min.				
Weight, including scoop	kg	419	460	502	618	706
Scoop capacity	Litre	388	426	465	590	674
Area performance	m ² /h	9,000	10,100	10,900	12,600	14,400



Adjustable dust flap



Hydraulic folding system (optional)



Emptying system



KS 600/750 with internal motor



Pressure relief valve



Interchangeable wear-resistant cutter

A truly effective scraper

KV series Scraper Attachment

- **Frees persistent dirt**
- **Versatile**
- **Attrition-free scraper bars**
- **Suspended scraper bars**



Profile ADLER KV series Scraper Attachment

Show dirt what you've got.

Do not finish your job without scraping bends. Debris and spillage on roads due to harvesting and other work in the fields pose a serious safety hazard. As the person responsible, you are legally required to take corrective action in such cases. The ADLER KV series Scraper Attachments offer an optimum solution. The KV series is ideal for use on bends, roads, lanes, paths and open spaces – any place where stubborn dirt from soils and clay earth makes it difficult to sweep.

With the KV series, you'll always achieve a clean end result no matter whether you mount the scraper attachment in front of your tractor or wheel loader, combine it with one of our sweepers or you scrape at the front and sweep at the rear while driving your tractor.

Accessories:

- Hydraulic swivel for direct attachment
- Mounting options for direct attachment:
3-point hitch or universal mount for wheel, telescopic and front loaders
- 3. Support wheel for optimum floor guidance

ADLER KV series Scraper Attachment	135	150	180	210	240	270	300	330
Direct attachment for tractors, wheel loaders or other carrier vehicles	-	-	-	✓	✓	✓	✓	✓
KV series attached to K 600 Sweeper without hopper – only possible in simple sweeping mode	✓	✓	✓	✓	✓	✓	✓	✓
KV series attached to K 750 Sweeper with or without hopper as required	-	-	-	✓	✓	✓	✓	✓



Direct attachment to tractors or wheel loaders



KV series Scraper Attachment with third support wheel



Pre-assembled combination with K 600 Sweeper



The suspended scraper bar elements optimally adapt to uneven road surfaces



Rotary side brushes combined with KV series and K 750 Sweeper



Pre-assembled combination with K 750 Sweeper



High powered ... E series Auger

- Compact design
- Low total height
- Highly efficient
- Maintenance-free usage
- Sturdy design
- Versatile in use



Profile ADLER E series Auger

Powerful performance. The auger range for every carrier vehicle.

The ADLER Auger series is equipped with powerful orbital engines, which are protected by a sturdy enclosure. The EG 250 and EG 500 models also feature additional transmission. The machine is operated using a single-action or dual-action hydraulic control circuit.

The drill rigs are mounted directly using the quick hitch mechanism or forklift forks on farm loaders or smaller wheel loaders. In the case of mini-excavators, the quick hitch coupler or a bolt attachment are used to mount attachments.

The universal joint in the auger mount ensures that drilling is always vertical no matter how the carrier vehicle is positioned on the ground.

The auger drills are equipped with exchangeable heads and blades suitable for light to medium soils. The augers are also easy to change using a bolt fixing mechanism. You can also work with medium and heavy soils quickly and effectively using our heavy duty auger blades and heads.

Accessories:

- Pressure relief valve

ADLER augers	E 50	E 100	E 165	EG 250	EG 500
Drive	Hydraulic			Hydraulic with transmission	
Auger diameter mm	up to 220	up to 300	up to 500	up to 750	up to 900
Required hydraulic pressure & volume	160 bar / >20 l/min.		160 bar / >30 l/min.	200 bar / >50 l/min.	200 bar / >75 l/min.
Torque daNm	50	100	165	250	500
Pressure relief valve	available as an option			included	
Weight* kg	105	118	131	180	191

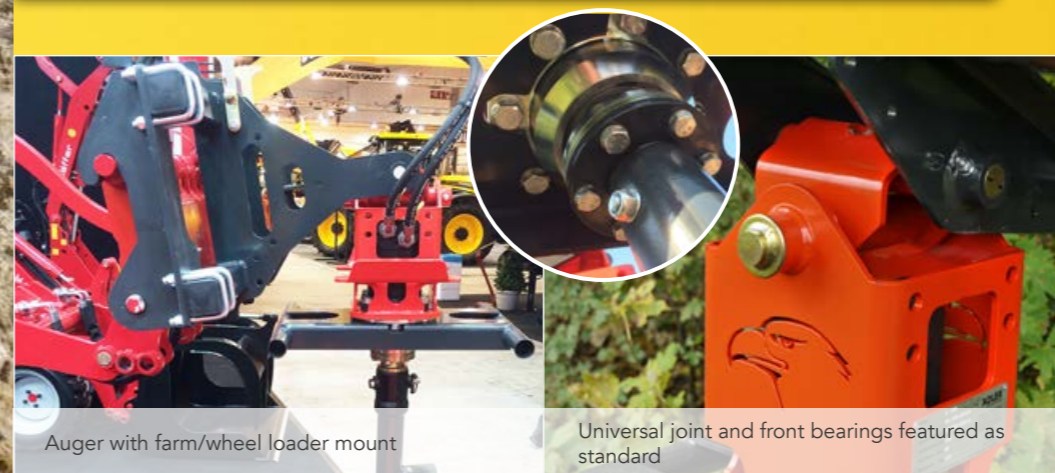
* Weight without mounting system



EG 500 Geared Auger



Auger on mini-excavator



Auger with farm/wheel loader mount

Universal joint and front bearings featured as standard



Auger drills and different qualities in standard and heavy-duty design

Impressive splitting ...

SP series Cone Splitter

- Compact design
- Splitter cone made of tempered steel
- With double-start buttress thread
- Highly efficient
- Practical stacking function
- Versatile in use

Developed
& produced in
Germany



Profile ADLER SP series Cone Splitter

To the point: how you cut bulky timber into pieces.

You can split tree roots, chop firewood or produce fencing posts. You can even move stacks of timber and split wood easily in a single work process. ADLER SP Series Cone Splitters allow you to complete such heavy work effortlessly without straining your back. The ADLER cone splitter series features high-performance orbital motors and an additional front bearing with grease lubrication. The machine is operated using a single-action or dual-action hydraulic control circuit.

The cone splitters are mounted directly on excavators using the quick hitch mechanism or attached with bolts.

The splitter cone is made of tempered steel and features a double-start buttress thread which penetrates each piece of wood autonomously. This produces a powerful splitting effect which provides excellent results, even on carrier vehicles with low hydraulic power.

Accessories:

- Flange for auger drills, including pendulum function

ADLER cone splitters	SP 100	SP 130	SP 165	SP 200
Drive	Hydraulic			
Required hydraulic pressure & volume	180 bar / >30 l/min.	180 bar / >50 l/min.	180 bar / >60 l/min.	180 bar / >80 l/min.
Torque daNm	100	130	165	200
Pressure relief valve	Featured as standard			
Splitting attachment Ø/length mm	135 / 285	135 / 285	160 / 340	160 / 340
Splitting capacity (depending on wood type)	1 m to about 3 m in length Ø to 0.6 m	1 m to about 4 m in length Ø to 0.8 m	1 m to about 4 m in length Ø to 1.0 m	1 m to about 5 m in length Ø to 1.0 m
Weight* kg	121	126	137	142

* Weight without mounting system



highly cost-effective



Effective work process even for smaller carrier vehicles



Penetrates each piece of wood autonomously



Splitting and stacking in a single work process

Ready for snowy weather ...

S series Snow Blade

- up to 115 cm high and 330 cm wide
- Made of steel plate 5 or 6 mm thick
- Anti-icing spring flaps
- Adjustable support wheels
- Curb guards
- Large network of suppliers
- In-house production

Developed
& produced in
Germany



Profile ADLER S series Snow Blade

There's no avoiding next winter!

And chances are there'll be snowy weather ...

With the new ADLER S Series Snow Blades, you'll be ideally prepared for clearing snow and ice for many years to come.

We have designed the blade's spring flaps, so that they won't ice over. This guarantees excellent clearing results in even the toughest weather conditions and round-the-clock use. Moreover, the time-consuming task of de-icing the spring flaps while you're on the road also becomes unnecessary. If you choose our optional hydraulic side adjustment, then the driver can also easily rotate the snow blade from the driver's seat during clearing.

Accessories

- Hydraulic swivel mechanism allows you to clear snow effectively without leaving the driver's seat
- Pressure relief valve for overload protection
- Extra heavy-duty swivel castor
- Alternative wear edges:
 - rubber and corundum wear edges
 - steel wear edges
- Side marker lights, LED, 12/24 V with reflective strips, left/right
- Holders for warning flags
- Warning flag staff made of pliant round material
- Customised colour as per RAL colour chart (standard: RAL 2002)

ADLER S Series Snow Blade	135	150	180	210	240	270	300	330
Working widths (straight/angled up to 30°) cm	135/ 120	150/ 134	180/ 160	210/ 187	240/ 214	270/ 241	300/ 263	330/ 289
Height mm	650	650	800	800	800	800	1150	1150
Swivel castors Ø/mm	200x50	200x50	200x80	200x80	200x80	200x80	250x80	250x80
Weight kg	195	210	336	366	393	421	594	628



Text



Anti-icing spring flaps, with curb guards as a standard feature (a range of wear bars are available)



S Series attached to a wheel loader



Working widths from 135 cm to 330 cm



Snow blade, 5 or 6 mm thick



Universal mount system with hydraulic pivot mechanism (with two hydraulic cylinders)



Height-adjustable support wheels (200 x 80 mm)

Cleared ...

V series Snow Blade

- Up to 65 or 90 cm high and 135 to 300 cm wide
- Two swivel folding wings
- Hydraulic side swivel mechanism
- Anti-icing spring flaps
- Curb guards
- High-quality primer & powder coating
- Adjustable support wheels



Profile ADLER V series Snow Blade

The Snow ADLER for next winter

We equip the V Series with curb guards, anti-icing spring flaps (made of spring steel 10 mm in Ø) and high-grade, height-adjustable support wheels.

The easily exchangeable mounting systems available for local authority tractors and farm loaders enable you to use the V Series Snow Blades in a variety of ways. The integrated levelling system also ensures consistently effective clearance results.

If your vehicle does not feature a second dual-action control circuit, you can set the required snow blade positions using the optional electric switch valve.

Accessories

- Reinforced, heavy-duty swivel castors
- Electric switch valve for swivel operation
- Side marker lights, LED, 12/24 V with reflective strips, left/right
- Holders for warning flags
- Warning flag staff made of pliant round material
- Customised colour as per RAL colour chart (standard: RAL 2002)

ADLER V series Vario Snow Blade	135	150	180	210	240	270	300	330
Clearance widths in V, Y and diagonal position (at 30° angled position)	121	129	155	190	215	235	258	289
Blade height outside/inside	mm 550/650	550/650	550/650	750/900	750/900	750/900	750/900	750/900
Swivel castors	Ø/mm 180 x 50	180 x 50	180 x 50	200 x 80	200 x 80	200 x 80	200 x 80	200 x 80
Weight (without mount)	kg 185	190	200	353	389	412	465	511



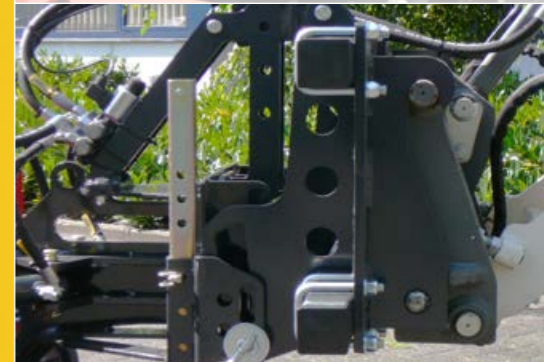
V Series attached to farm loader



BRAND NEW Now also in working widths between 210 and 330 cm



Electric switch valve with overload protection provided by two pressure relief valves and nitrogen bladder accumulator



Farm loader attachment with levelling system and parking support



All possible clearance configurations in V, Y and diagonal position



Breaking the ice!

Cable is history!

Featured as standard:

Including smartphone for control via Bluetooth

ST-E Salt Spreader

- 12-volt operation
- Smartphone control via Bluetooth, no laying of control cable required
- With agitator and intelligent anti-blockage control as standard
- Spread width of up to 6 m
- Rotational speed and dosage regulated via smartphone as standard
- Several universal mount systems
- Completely made of stainless steel
- Specially manufactured PE salt tank



Volume of 120 or 200 litres

Profile ADLER ST-E Salt Spreader Safety for winter roads!

The ST-E Salt Spreader comes with a 120- or 200-litre plastic composite tank held in a sturdy frame. The tank is equipped as standard with an additional geared stirrer, a water-tight hinged lid and a leak-free drain plug. Rotational speed and spread rate can be conveniently controlled from the driver's seat. The ST-E Salt Spreader is also fitted with a powerful 12 volt geared motor for the spreader plate. The working width is continuously adjustable from 1 to 6 m.

Mounting system variants

- Universal mount system for fork lift trucks and farm and wheel loaders is height adjustable and features tilt function
- Cat. I/II three-point hitch
- Hitch triangle
- Pick-up

Accessories

- Speed-dependent, GPS-based quantity control
- LED lighting set, 12/24 V, as per traffic regulations

ADLER salt spreader	ST-E 120	ST-E 200
Tank capacity	120	200
Speed adjustment	Variable	Variable
Spreader plate motor	Geared motor with splash water protection	
Separate agitator (fitted as standard)	Driven by geared motor	Driven by geared motor
Casing	V2A/V4A stainless steel, 2.5 mm	V2A/V4A stainless steel, 2.5 mm
Weight without mount	kg 48	56
Area performance	m ² e.g. 60,000 m ² per hour 10 km/h	

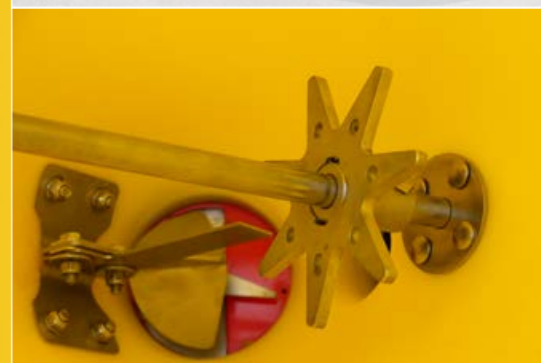
Featured as standard:
Rotational speed & spread rate controlled from the driver's cab.



Salt spreader attached to a farm/wheel loader



Universal mount system, hinged



Developed by ADLER, the beater and agitator system prevents bridging in the road grit



Rotational speed and spread rate can be conveniently adjusted from the driver's cab via smartphone



12-volt geared motor for the spreader plate



Spread range up to 6 m, regulated by rotational speed

Make sweeping changes!

HK 5.5/ HK 6.5 Walk-Behind Sweeper

- 75/100 cm working width
- Hydraulic drive for driving and sweeping modes
- Differential transmission as a standard feature
- large drive wheels
- Rod steering system instead of Bowden cables
- Stepped traction drive backwards/forwards on HK 6.5



Profile ADLER HK 5.5/HK 6.5 Walk-Behind Sweeper

For professional use!

Over the years, this sweeper has also proven itself to be a great help in winter: smaller amounts of snow can be quickly cleared with a snow sweeper roller while the easy-to-attach snow blade allows you to eliminate larger amounts of snow as well. In designing this sweeper, we have avoided using cold-sensitive Bowden cables for the traction drive and installed a high-quality rod steering system instead. This means our HK Series is always ready for use, even at sub-zero temperatures. The sweeper's powder coating, robust manufacturing and low maintenance hydraulic drive guarantee a long service life.

Accessories:

- Hopper with support wheels
- Hydraulic rotary side brush
- Snow blade with rubber edge
- Snow chains
- Sulky

ADLER walk-behind sweeper	HK 5.5	HK 6.5
Working width (straight) cm	75	100
Brush drive	Hydraulic	Hydraulic
Brush diameter mm	320	320
Roller adjustment	left/right/straight	left/right/straight
Direction of brush rotation	rotates in one direction	rotates in both directions
Traction drive	hydraulic/continuously adjustable (forwards) 0 – 3.7 km/h	hydraulic/continuously adjustable (forwards and backwards) 0 – 4.2 km/h
Transmission	differential	differential
Drive motor	Honda GCV 160, 5.5 hp (4.0 kW)	Honda GX 200, 6.5 hp (4.8 kW)
Tyres	480/4.00-8	480/4.00-8
Area performance m ² /h	2,800	up to 4,000
Finish	powder coating	powder coating



Hydraulic rod steering system and continuously adjustable traction drive



Walk-behind sweeper with rotary side brush



Sweeping with a hopper



HK 5.5 in use in winter



Honda motor GX 200



Walk-behind sweeper with a snow blade



HW 5.5 Weed Brush

- **Hydraulically driven HW 5.5 Weed Brush for convenient weed clearing**
- **ideal for gardening, agriculture and municipal use**
- **Environmentally friendly cleaning of paths and surfaces without pesticides**
- **Rod steering system instead of Bowden cables**
- **Clockwise / anti-clockwise sweeping as a standard feature**

100%
without
chemistry

Profile ADLER HW 5.5 Weed Brush

The ADLER Weed Brush makes controlling weeds an easy task. It's ideal for gardening and landscape architecture, agricultural and municipal use and for service providers. This weed brush is also perfect for use in your own garden at home.

The specially designed weed brush enables you to eliminate moss and wild grass from pathways, gutters and large surfaces.

In designing the weed brush, we have avoided the use of Bowden cables where possible and fitted it with a high-quality rod steering system.

The machine's powder coating, robust manufacturing and low-maintenance hydraulic drive guarantee a long service life.

Accessories:

- **Stranded wire** (plaited) – excellent for surfaces with dense weed growth
- **Flat wire brush** – eminently suitable for removing mosses and smaller weeds
- **Flat wire bristles** (60 pieces) with plastic coating – the universal brush for a long service life
- **Radial sweeper** – effective for heavy and stubborn dirt with a working width of 70 cm
- **Adjustable stone guard** – to prevent dirt and stones flying out

Technical specifications:

Brush diameter	60 - 70 cm, depending on bristles
Roller adjustment	On height-adjustable wheels
Brush drive	hydraulic, chain
Roller adjustment	via support wheel
Direction of brush rotation	rotates in both directions
Drive motor	Honda GCV 160, 5.5 hp (4.0 kW)
Wheels	480/4.00-8 tyres 3-stage, individually height-adjustable
Finish	powder coating
Emergency stop switch	Featured as standard
support wheel	Featured as standard



Adjustable stone guard



Simple, robust design



Small, versatile weed brush



The right brush for each weed type



Weed brush with adjustable support wheel



Weeds? No problem!



Working close to the edge? No problem!



HW 5.5 3D Weed Brush

- Conveniently adjustable 3D brush head
- Hydraulically driven HW 5.5 Weed Brush for convenient weed clearing
- Ideal for horticulture, agriculture and municipal use
- Environmentally friendly cleaning of paths and surfaces without pesticides
- Clockwise / anti-clockwise sweeping as a standard feature

100%
without
chemistry

**Available
from 2018**

Profile ADLER HW 5.5 3D Weed Brush

The ADLER Weed Brush makes controlling weeds an easy task. It's ideal for gardening and landscape architecture, agricultural and municipal use and for service providers. This weed brush is also perfect for use in your own garden at home.

The specially designed weed brush enables you to eliminate moss and wild grass from pathways, gutters and large surfaces.

In designing the weed brush, we have avoided the use of Bowden cables where possible and fitted it with a high-quality rod steering system.

The machine's powder coating, robust manufacturing and low-maintenance hydraulic drive guarantee a long service life.

Accessories:

- **Stranded wire** (plaited) – excellent for surfaces with dense weed growth
- **Flat wire brush** – eminently suitable for removing mosses and smaller weeds
- **Flat wire bristles** (60 pieces) with plastic coating – the universal brush for a long service life
- **Radial sweeper** – effective for heavy and stubborn dirt with a working width of 70 cm
- **Adjustable stone guard** – to prevent dirt and stones flying out

Technical specifications:

Brush diameter	60 - 70 cm depending on bristles
Roller adjustment	via spindle with crank lever
Brush drive	Hydraulic
Direction of brush rotation	rotates in both directions
Drive motor	Honda GCV 160, 5.5 hp (4.0 kW)
Wheels	480/4.00-8 tyres
Finish	powder coating
Emergency stop switch	Featured as standard
support wheel	Featured as standard



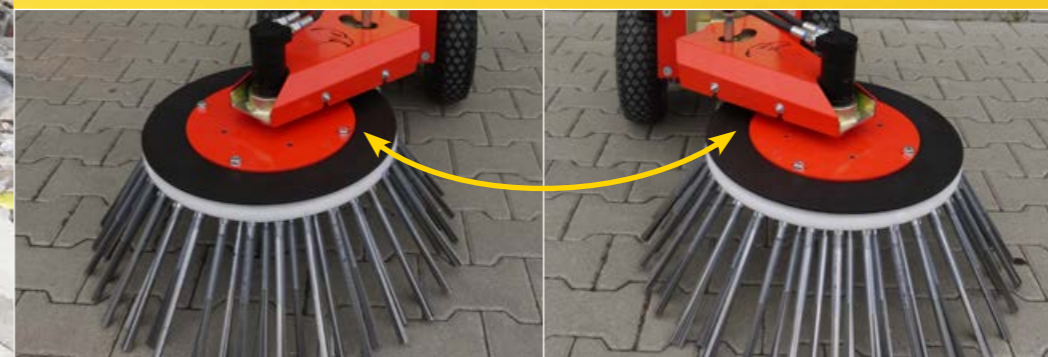
Simple, robust design



Easy to work close to edges.



Stepless adjustment of handlebar height



Conveniently adjustable 3D brush head





NEW
Including
radio remote control



Weed brush attachment W-series

- High-performance, hydraulically driven weed brush with brush 800 mm in diameter
- Perfect for clearing large areas of weeds quickly
- Universal attachment for all standard carrier vehicles
- Basic device or professional machine with many hydraulic functions and radio remote control

100%
without
chemistry

Developed
& produced in
Germany

Profile ADLER W series Weed Brush Attachment

In addition to thermal weed control with its long-term effect, there is also a clear demand for mechanical methods which clear weeds from surfaces immediately.

The ADLER weed brush attachment was specially developed for larger surfaces. Paving surfaces in particular are quickly cleared of weeds thanks to the large brush diameter, the hydraulic swivel arm and the wide variety of adjustment options.

You can choose between different types of brushes, depending on the ground covering and the type of weed:

- wire plaits (ideal for dense growth and stubborn weeds)
- flat wire (ideal for moss)
- large radial brush for cleaning up after clearing

Accessories:

- Hydraulically adjustable swivel range
- Hydraulically adjustable longitudinal and lateral inclination
- 8-channel radio remote control operated on 12 or 24 volts for fully hydraulic use of weed brush
- Height-adjustable support wheel 200 mm x 80 mm
- 3/4" flow-control valve for hydraulic flow rates greater than 75 l/min.
- Various brush attachments

Equipment variants

based on the hydraulic connections available on the carrier vehicle

1 x dual action (snap-in function recommended)	1 x dual action + electric switch valve 12 V	2 x dual action	4 x dual action or 1 dual action with radio remote control
-			
-	-	-	
-	-	-	



Radio remote operation for convenient control in the cab



Heavy brush head with side stone guard



Universal attachment with side outward swivelling



Hydraulically adjustable longitudinal and lateral inclination (mechanical/hydraulic)



Swivel arm (mechanical/hydraulic) to work on large surfaces





ADLER Heater Flexi



ADLER Heater 500



ADLER Heater 1000/1400

**ADLER Heater
weeds just don't
stand a chance.**

Damage to weeds
visible after just
1 to 2 days.

What is thermal weed control?

Thermal weed control methods can be used on practically all surfaces and all work according to the same principle. The application of thermal energy to surface plant matter destroys the cell structure of the vegetative fibre. The water which is transported from the root to the leaf cells evaporates causing the plant matter to wither after a short time. Furthermore, proteins are denatured leading to vital processes such as photosynthesis being interrupted. As a result the damaged matter dies.



Infrared radiation produced by the approx. 1000-°C ceramic infrared emitter destroys the cell structure and protein of the surface plant matter and reduces the germination capacity of existing seeds. Damage to weeds is visible after just 1 to 2 days.

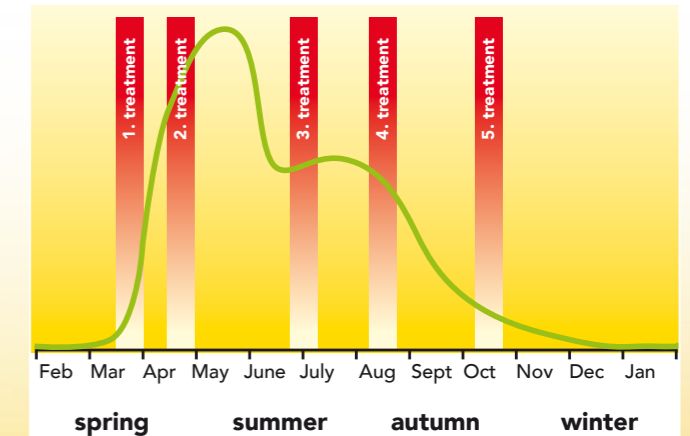
The temperatures required in this case to achieve this damaging effect are as low as approx. 60 to 70 °C.

Repeated treatment continuously weakens the root system, making it difficult to generate new growth. The plant dies as a result.

This method is therefore particularly effective on young plants and annual weeds. Long-term successful control of root-spreading weeds depends on the regular repetition of treatment. Frequency of and intervals between treatment are to be adjusted to given requirements.

Effect on seeds:

When exposed to direct heat, these lose their germination capacity or are even stimulated to germinate. When treated promptly, fresh weed growth can therefore be sustainably controlled.



Example of growth patterns in grasses and possible treatment periods. Actual treatment intervals depend heavily on the type of weed, vegetation and the surface to be treated.

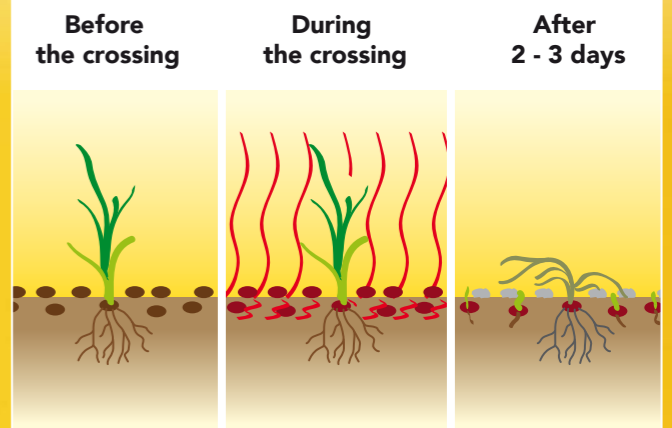


Diagram of ADLER Heater process steps

The ADLER Heaters use sophisticated infrared technology and offer a number of advantages compared with other methods.

- Clear limitation of operating area
- No noise exposure
- Low gas consumption
- Extremely short set-up times



ADLER Heater Flexi

ADLER
infrared
technology

100%
without
chemistry

Developed
& produced in
Germany



Profile ADLER Heater Flexi

- Clear limitation of operating area
- Plug and Play: Connect gas cylinder, light and get going
- Flexible use in tight spaces (traffic islands, bus stops, etc.) thanks to single-axle design and swivel-mounted burner
- Compact dimensions for ease of transport
- Practically noiseless operation

Accessories:

- Hand-held burner for difficult-to-access spots

Technical specifications:

ADLER Heater		Flexi 350
Working width	mm	350
Dimensions in operating position	mm	L 1,453 x W 352 x H 800 - 1,300
Dimensions in transport position	mm	L 869 x W 352 x H 585
Number of infrared emitters		2
Ignition		Electrical
Weight (without gas cylinder)	kg	43
Thermal output	kW	13
Infrared emitter fuel		11-kg / 5-kg propane gas cylinder
Capacity per gas cylinder	h	10 / 4.5
Working speed	km/h	1.0 - 1.5
Area performance	m ² /h	up to 525



The front castor ensures that the infrared emitter is positioned at the optimum working height.



Optimum weight distribution makes the Flexi comfortable to work with.



Ideal for treating edges by simply tilting the emitter to the right or left.



The Flexi can be operated with an 11-kg or 5-kg gas cylinder. Refillable gas cylinders and disposable cartridges are available for use with the hand-held torch.



The Flexi folds away quickly and is compact enough to fit in almost any boot.



The hand-held burner allows treatment of even difficult-to-access spots



ADLER Heater 500

ADLER
infrared
technology

100%
without
chemistry

Developed
& produced in
Germany

Profile ADLER Heater 500

- *Silent, thermal weed control using infrared light and electric drive*
- *Low gas consumption and low CO2 emissions*
- *No sweeping action and no damage to the ground*
- *Suitable for water-bound pathways and surfaces*

Accessories:

- Hand-held burner for difficult-to-access spots

Technical specifications:

ADLER Heater		500
Working width	mm	550
Basic device dimensions	mm	L 1,495 x W 532 x H 829
Number of infrared emitters		3
Weight (without gas cylinder or hand-held burner)	kg	108
Ignition		Electrical
Drive		Electrical
Battery power supply	Ah	17
Battery capacity	h	2 - 5
Infrared emitter fuel		11 kg propane gas cylinder
Gas consumption	kg/h	Up to 2.3 (without hand-held burner)
Capacity per gas cylinder (h)		about 5
Working speed	km/h	up to 2
Noise exposure	dB	< 40
Area performance per hour	m ²	up to 1,000
Overall cost/m ² - including 4-year depreciation - 5 hours/day - 100 days/year	€	0.02



Banishes weeds for the long term



Large drive wheels and differential transmission ensure optimum manoeuvrability and effortless work



Infrared radiation without naked flame



Height-adjustable infra box to adapt to road, path and surface conditions

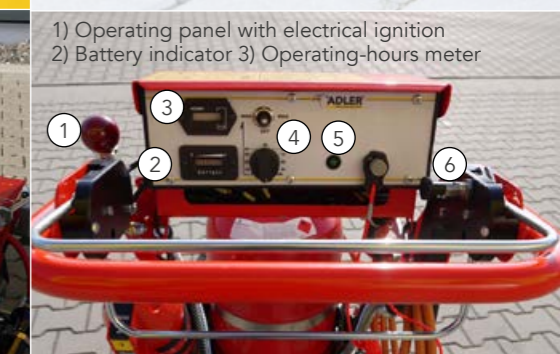
- 1) Operating panel with electrical ignition
- 2) Battery indicator
- 3) Operating-hours meter



Hand-held burner for difficult-to-reach corners and edges



- 1) Backwards/forwards drive
- 2) Safety cable to stop motor
- 3) Securing mount
- 4) On/off switch
- 5) Hose bracket



- 4) Speed controller
- 5) LED for monitoring burner
- 6) Motor brake



ADLER Heater 1000/1400

ADLER
infrared
technology

100%
without
chemistry

Developed
& produced in
Germany



Profile ADLER Heater 1000/1400

- For the thermal processing on large surfaces
- Suitable for water-bound pathways and surfaces
- Equipped with radio remote control as standard
- **ADLER plug & play:**
 1. Easy to attach to many carrier vehicles
 2. Connect to 12-volt supply
 3. Start via radio remote control and get going

Accessories:

- Hand-held burner for difficult-to-reach corners and edges

Technical specifications:

ADLER Heater		1000	1400
Working width	mm	1,050	1,400
Dimensions (without mount)	mm	L 1,600 x W 1,127	L 1,600 x W 1,462
Number of infrared emitters		6	8
Radiated surface	mm	L 740 x W 1,039	L 740 x W 1,381
Weight (without gas or mount)	kg	about 370	about 490
Ignition		Electric via radio remote control	
Connections required	Electrical	12 volt (1 x attachment device)	
	Hydraulic	1 x dual action (for hydr. side shift)	
Infrared emitter fuel		LPG autogas	
Gas consumption	kg/h	about 6	about 8
Coverage per gas filling		approx. 8 working hours (120 l gas tank)	approx. 8 working hours (150 l gas tank)
Working speed	km/h	2-3	
Noise exposure (without vehicle)	dB	< 40	
Area performance per hour	m ²	2,000 - 3,000	2,800 - 4,200
Overall cost/m ² - including 4-year depreciation - 5 hours/day - 100 days/year	€	0.01	0.01



Indicator for height adjustment and signal lamps for infra box operating control



Also suitable for smaller vehicles with front mount (also for rear attachment as an option)



Spring-mounted infra box, height adjustable by radio remote control



Radio remote control with suction bracket and emergency off button



Impact-absorbing and heavy-duty swivel castors to protect infra box



Side fill inlet for LPG autogas



Hydraulic side shift 20 cm to the left and right



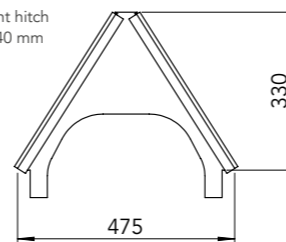
Mount options for your ADLER

Developed & produced in Germany

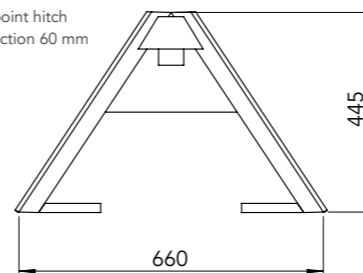
Attachment mount suitable for front plate, DIN 76060, Size 3 or 5, including hydraulic cylinder and levelling system for optimum adjustment to ground surface

Hitch triangles:

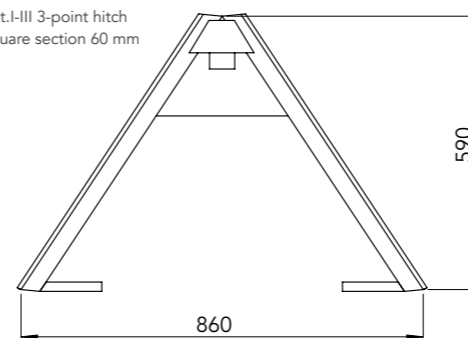
Municipal 3-point hitch
Square section 40 mm



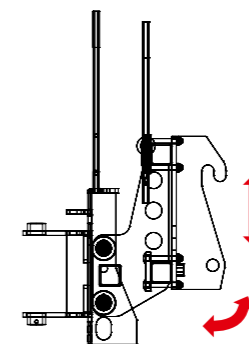
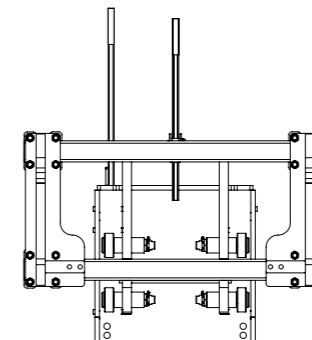
Cat. 0 3-point hitch
Square section 60 mm



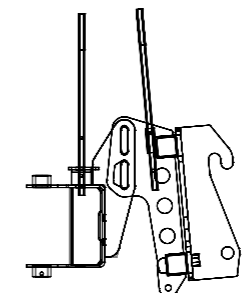
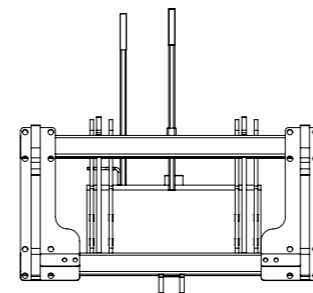
Cat. I-III 3-point hitch
Square section 60 mm



Universal mount with castor guide and 3D levelling system:



Farm loader mount with 3D levelling system:



Unimog fitting with attachment mount as per DIN 76060



Wheel loader mount with castor guide and 3D levelling system



Wheel loader mount for fork prongs with castor guide and 3D levelling system



Municipal 3-point hitch



Category I/II three-point linkage



Farm loader mount

The ADLER drill rig range:

Ideal for well drilling – geothermal drilling – geological exploration drilling – probe drilling

Save time

- Quickly transported
- Short set-up times
- Start work without delay

Reduce costs

- Maximum price-performance
- Low investment costs
- Easy maintenance

Impress customers

- Gentle on gardens
- Fits through standards doors
- Engine with noise insulation



Suitable for trailers, approved up to 3.5 t



Can pass through doorways



Safety device around rotating pipe fitted as standard



Cathodic dip coating with subsequent powder coating – extremely corrosion-resistant



You will find more information in our Drill Rig Range brochure (PDF download)



B15

Kubota engine: 15 HP
Extraction force: 9 kN
Weight: 1.18 t

down to 25 m!



B25

Kubota engine: 25 HP
Extraction force: 12 kN
Weight: 1.33 t

down to 50 m!



B35

Kubota engine: 35 HP
Extraction force: 23 kN
Weight: 1.98 t

down to 75 m!



B50

Kubota engine: 50 HP
Extraction force: 23 kN
Weight: 2.28 t

down to 100 m!

Now also
B50 pro

Breaking new ground ...

Powerful drilling solutions for highly confined spaces.



Our drill rigs are used for well drilling, geothermal drilling and geological exploration drilling. We can also provide you with solutions for almost all types of piling operations. The low weight and compact design enable you to reduce your investment costs to a minimum. Our technology is innovative, allowing you to achieve excellent performance with minimal effort. We equip our B series drill rigs with customised features to meet your requirements.

We offer you four compact drill rigs in different performance categories to suit the required drill depth and soil characteristics.

**Ideal for well drilling,
geothermal drilling,
geological exploration drilling
and probe drilling**

The powerful B Series compact drill rigs allow you to make drill holes even in locations which are difficult to access. With a transport width between 88 and 95 cm and a height of just 196 cm, these drill rigs will fit through standard doors, enabling you to access all existing buildings. The standard chain chassis ensures that you reach your drilling location even on difficult terrain. Our small and compact drill rigs also ensure that you can travel to the site easily in the first place: All you need is a car trailer to transport them to the site.

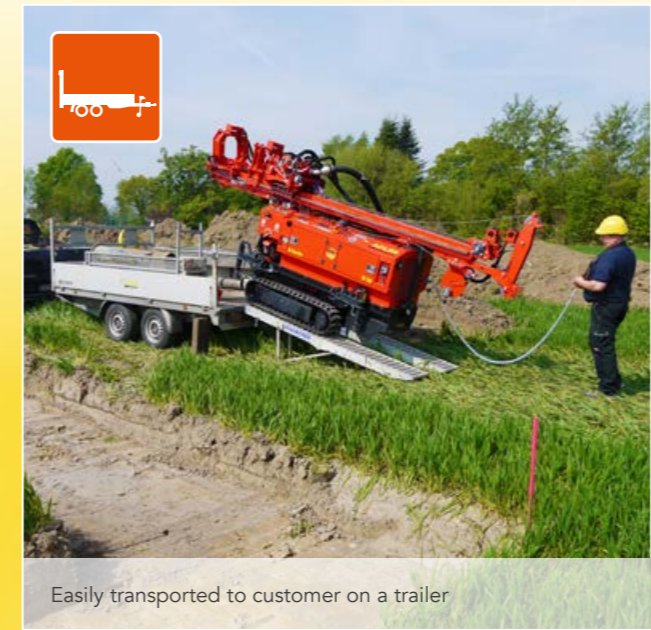


- Quickly transported
 - Short set-up times
 - Start work without delay
-
- Maximum price-performance
 - Low investment costs
 - Easy maintenance
-
- Gentle on gardens
 - Fits through standards doors
 - Engine with noise insulation

Developed
& produced in
Germany



You will find more information in our Drill Rig Range brochure (PDF download)



Easily transported to customer on a trailer



At 88 cm wide, easily fits through all doors and access ways



Extend hydraulic parking supports and raise mast



The B Series is ready for use in minutes

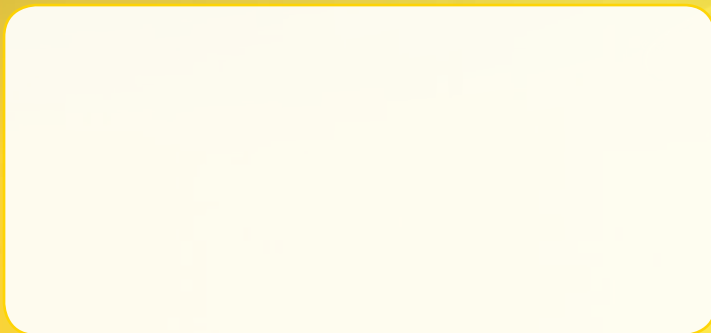


PRODUCING QUALITY.

Experience

Innovation

Expertise



All information in this brochure is based on the best knowledge available to us and has been carefully checked. No liability is accepted.
2017/09 (GB) We reserve the right to modify dimensions, weight and technical data.
Conceptual design & layout: www.werbeagentur-willers.de

ADLER Arbeitsmaschinen GmbH & Co. KG

An den Bahngleisen 28 · 48356 Nordwalde · Germany
Tel.: +49 (0) 2573 979 990 · Fax: +49 (0) 2573 979 99 40
info@adler-arbeitsmaschinen.de

www.adler-arbeitsmaschinen.de