

COMBINED SEED-DRILLS AND FRONT HOPPERS





HIGH STRENGTH STEEL

All Alpego machines use the best steel to reduce weight and increase work performance, this maximizing both consumption and operating costs. This has a great impact on environmental sustainability as well.

WE HAVE CREATED A COMPLETE SYSTEM BECAUSE HAVING THE BEST STEEL IS NOT ENOUGH.

The sticker "ALPEGO INSIDE" on all machines, certifies the **high quality** of Alpego's products. An union of **first quality materials**, **eco-sustainable coating** process and **certified welding** that guarantees an **exceptional durability and quality over the years**.



ECO PAINTING

A unique system of its kind throughout Europe, which allows **each component to be painted with the most suitable process and in full respect for the environment**. The paints used, in fact, are water-based and powder-based and do **not produce emissions of VOC** (Volatile Organic Compounds).



CERTIFIED WELDING

For more than twenty years the exceptional durability of Alpego structural components has been guaranteed by the effectiveness of **welds made by highly qualified personnel in accordance with standardized processes certified by the National Welding Institute**.

Your customized seed-drill

Accuracy and simplicity to meet your needs

The choice of the seed-drill is essential. A good sowing is the basis for a good harvest. Our combined seed-drills have been designed and developed to optimize the seedbed preparation and to ensure a precise and regular seeding, even in challenging and difficult conditions.

JET-M

EFFICIENT inside

HP 110-200
Page 20



JET-X

PROGRESS inside

HP 200-320
Page 22



EFFICIENT inside

The machine has been designed to guarantee an optimal compromise between performance and ease of use thanks to:

- Quick release of the harrow
- Metering unit AIRON
- Low consumption hydraulic turbine
- Ergonomic front hopper with advanced center of gravity
- Electronic control of sowing
- Possibility of use with low power tractors

PROGRESS inside

The machine is designed for professional agriculture in the most demanding and intense conditions thanks to its remarkable performance and high work flows:

- Seeding control
- Isobus system (on request)
- Easy emptying and cleaning
- High performance hydraulic turbine
- Quick release with fast electric and hydraulic decoupling

Thanks to simple, quick and precise settings the new Alpego seed-drills adapt to all situations and working conditions. The multiple Alpego solutions allow - thanks to the wide choice of implements for working the soil: power harrows, rotary cultivators or disc cultivators, rollers, seed-drills and terminals - to find the most suitable solutions to your needs for the coming years.

AS PRO

PROGRESS inside

HP 100-500
Page 28



AS MAX

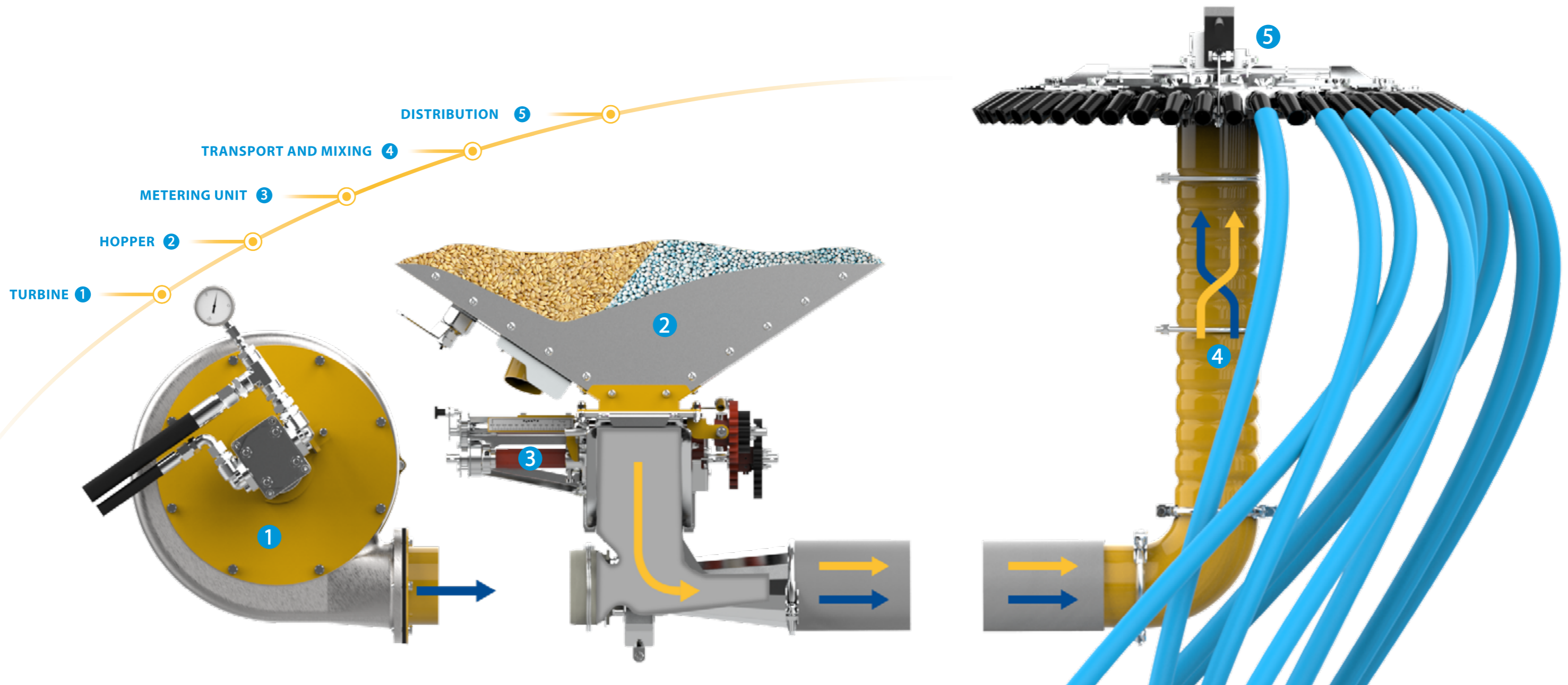
PROGRESS inside

HP 130-500
Page 32



Distribution and dosing system

Accuracy, power and high performance



1

TURBINE

Designed to guarantee the minimum use of oil even in the most demanding working conditions, while maintaining high performance thanks to the high-performance engine, requiring little energy from the tractor.

2

HOPPER

Alpego hoppers are characterized by their unique shape (thanks to which the center of gravity of the machine is closer to the tractor), their excellent accessibility and ease of loading. They can be used for a wide range of seeds and fertilizers. Furthermore, in the premium versions (AS-Pro and AS-Max) the hoppers are entirely made of stainless steel.

3

METERING UNIT

Alpego metering units are designed and developed internally and guarantee maximum precision and ease of adjustment for all products. They offer an exceptional range of use, dosing, depending on the model, seeds and fertilizer from 2 to 500kg per hectare.

4

TRANSPORT AND MIXING

All transport channels guarantee fluidity and performance thanks to their large diameter, favouring optimal product mixing and faster flow. They are also made of wear-resistant material to ensure maximum durability over the years.

5

DISTRIBUTION

Alpego distribution heads are designed to meet any need, guaranteeing an optimal distribution of the product both with seeds and with fertilizers (through distribution heads from 6 to 48 rows). Depending on the models, the Turbo Rotal system is present.

RUBBER

A seeding bar for all weather conditions!

PLOWED SOIL



WET SOIL



SOIL WITH CROP RESIDUES



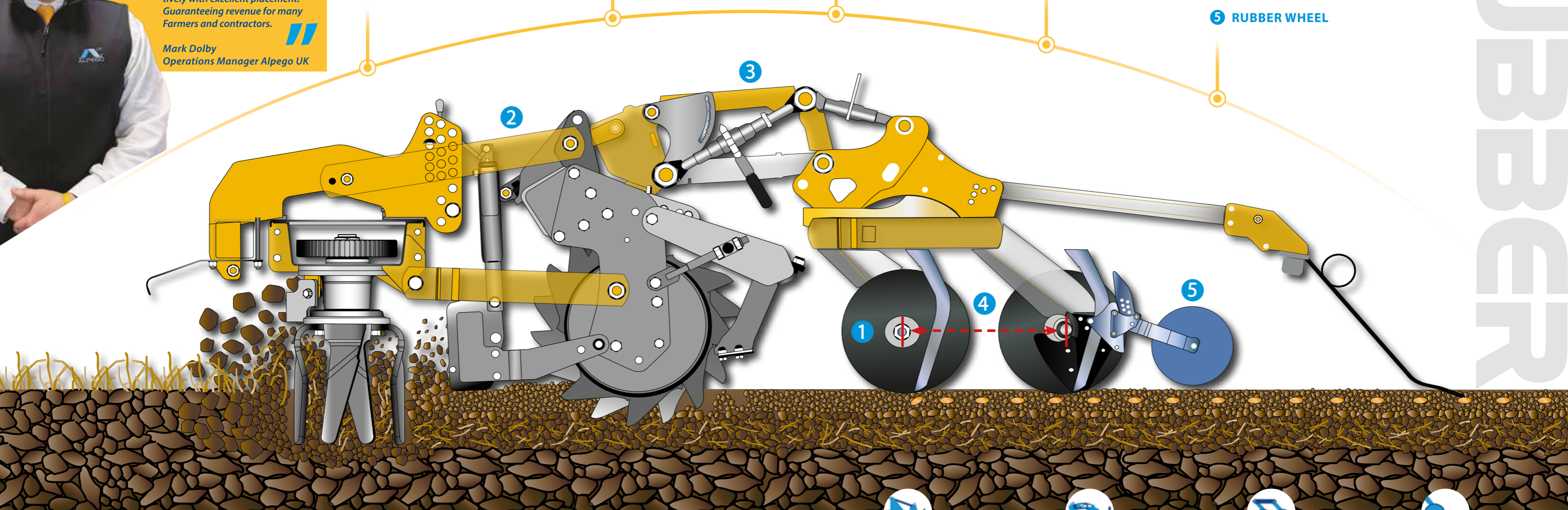
STONY SOIL



“The UK has recently experienced another weather event in the middle of the main drilling season. Large parts of the UK saw flooding and extremely challenging conditions. The Rubber sowing system was once again proven to seed effectively with excellent placement. Guaranteeing revenue for many Farmers and contractors.”

Mark Dolby
Operations Manager Alpego UK

- 1 DISC COULTER
- 2 PARALLELOGRAM ROLLER
- 3 SEEDING BAR ADJUSTMENT
- 4 SEEDING ROWS
- 5 RUBBER WHEEL



A - SILENT BLOCK : Shock-absorbing system of the drilling element, which makes it possible to develop a maximum disc resistance of 60 Kg.

B - DISC COULTER : The disc with a diameter of 355 mm, suitably inclined, with a cutting profile allows perfect and constant penetration into the ground and uniform rolling.

C - DOUBLE ROLLER BEARING : Two roller bearings for unprecedented reliability also in tough conditions.

D - PROTECTION PLATE : The protection plate shields the seed flow until its contact with the seeding bed for a uniform sowing.

2 PARALLELOGRAM ROLLER
Parallelogram system for power harrow working depth adjustment; the 2 seeding bars stay horizontal for a uniform pressure on the coulters.

3 SEEDING BAR ADJUSTMENT
Parallelogram for adjusting the depth and incidence of the seeding bar by means of two jacks.

4 SEEDING ROWS
Large distance between the 2 sowing rows (43 cm) to facilitate the passage of the soil and any cultural residues.

5 RUBBER WHEEL
Rubber wheel for a precise working depth control on each element.



ALPETRONIC

Control of the seed-drill
at your fingertips



TOUCH Touch

- 8" high resolution colour touch-screen (800x600TFT)
- USB for data transfer
- Serial port RS232
- Camera input
- CAN-BUS connector
- Functions can be expanded with several installable license, i.e. Task Control (TC), Track leader (parallel drive), Multi section control (TCSC), Variable rate (VRC).

For Alpego seed-drills JET-X e ASmaX ISOBUS



DIGIT Digit

- 5.6" high resolution colour screen
- USB for data transfer
- Serial port RS232
- Camera input
- CAN-BUS connector
- Functions can be expanded with several installable license, i.e. Task Control (TC), Track leader (parallel drive), Multi section control (TCSC), Variable rate (VRC).

For Alpego seed-drills JET-X and ASmaX
(included in the kit for non-Isobus tractors)



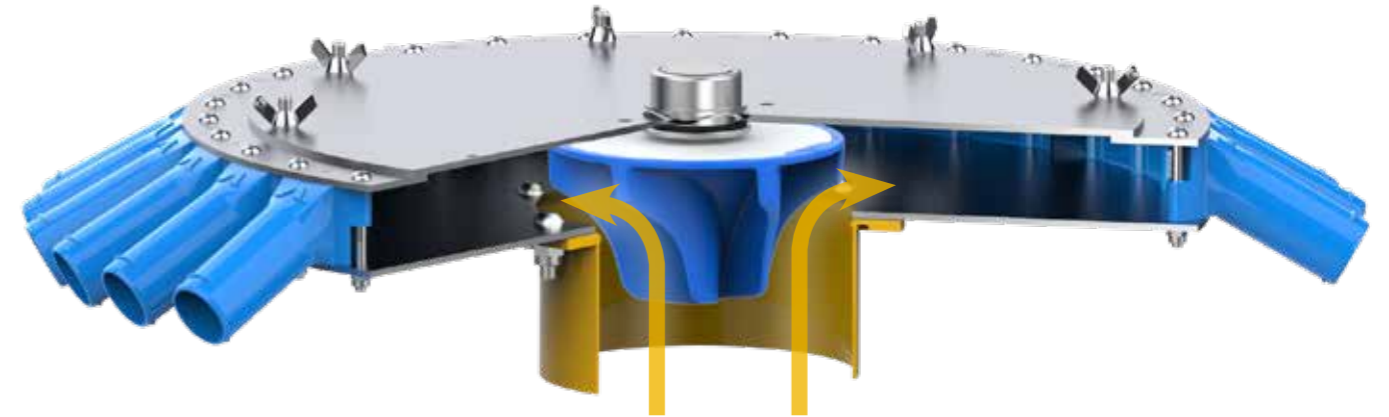
Super-Plus Super-Plus

- Electronic metering unit management
- Automatic weighing and calibration
- Modulation of the distributed seed quantity
- Warning alarm for hopper reserve level
- Control of the metering unit rotation
- Forward speed
- Turbine regime
- Tramline system
- Pre-Start function

For Alpego seed-drills JET-M e AS-Pro

TURBO ROTAL

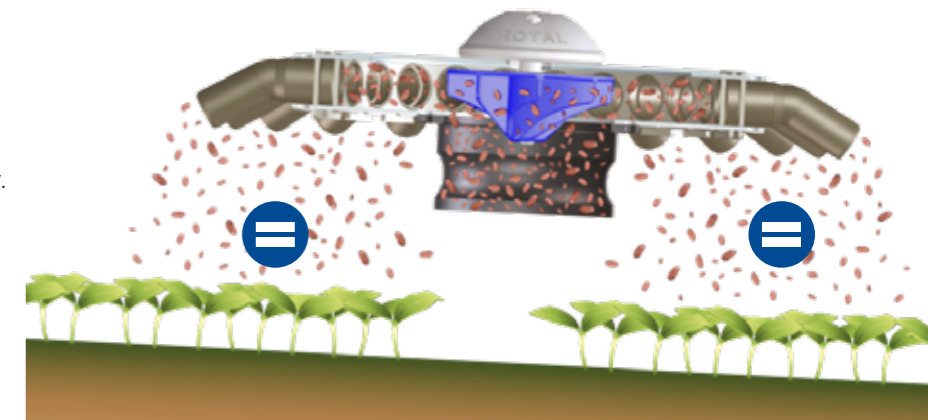
An optimized distribution system
for uniform sowing



The Turbo ROTAL system is an innovative system consisting of a spinning impeller located in the centre of the distribution head, that promotes a more uniform distribution of the seed to the seeding rows even in hilly areas thus reducing by a 50% factor the error in distribution homogeneity.

ALPEGO

The Alpego Turbo ROTAL solution guarantees a better distribution of the product on each row, the rotating movement of the turbine spreads the seed uniformly on all the outputs of the distribution head, even if it works in a non-horizontal way. It proved a better birth and better seeding efficiency.



Standard solutions on the market

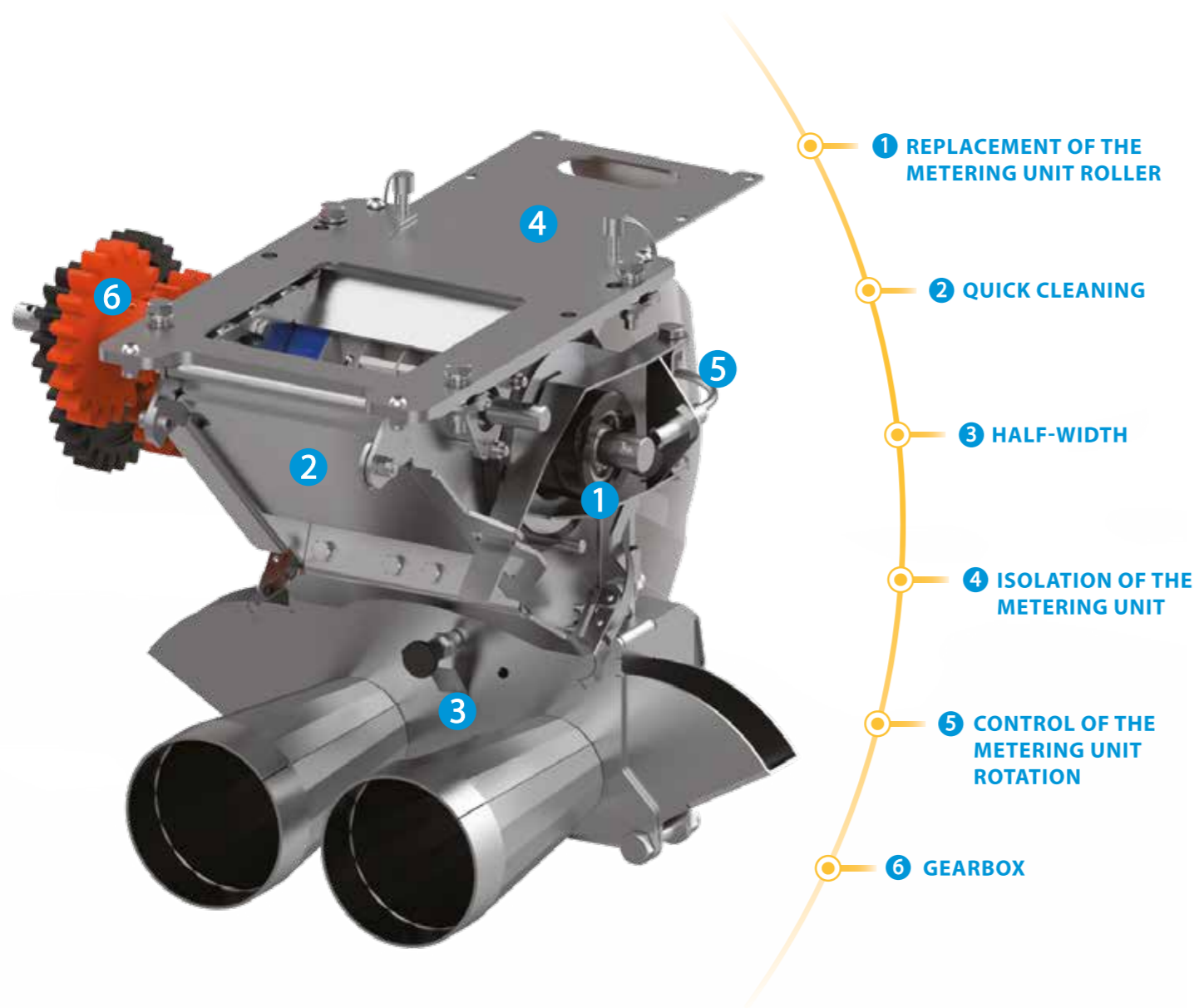
In traditional pneumatic conveying systems the seed distribution head has a natural inaccuracy due to various factors including the inclination where, by gravity, the product tends to concentrate in the lower area. Because of this, important errors can often be detected among the various rows which can lead to non-homogeneous seeding.



AIRON

Precise and delicate dosage
for the utmost respect of the seed

We have designed the new AIRON metering unit to maximize simplicity and ease of use in the seeding test, cleaning and adjustment. Thanks to the 3 interchangeable metering rollers, quickly replaceable, you can distribute various types of seeds (large and small) and with the new closing system you can block sowing on half the machine by choosing between right and left without any constraint.



1 REPLACEMENT OF THE METERING UNIT ROLLER

2 QUICK CLEANING

3 HALF-WIDTH

4 ISOLATION OF THE METERING UNIT

5 CONTROL OF THE METERING UNIT ROTATION

6 GEARBOX



1 REPLACEMENT OF THE METERING UNIT ROLLER
The replacement of the metering roller simply occurs through the side access door of the distributor. No special tools are required.



2 QUICK CLEANING
Thanks to the rear opening, the AIRON metering unit is easy to clean.



3 HALF-WIDTH
Thanks to the new system it is possible to set half-width choosing between right and left without any constraint.



4 ISOLATION OF THE METERING UNIT
The guillotine door positioned at the base of the hopper allows to isolate the metering unit. Therefore (for example) it is possible to replace the metering roller even at full load.



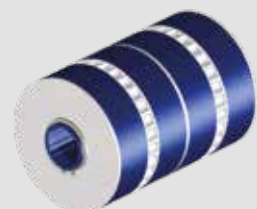
5 CONTROL OF THE METERING UNIT ROTATION
No error is possible thanks to the sensor located on the door of the seeding module that controls the rotation of the metering unit and the correct closing of this.



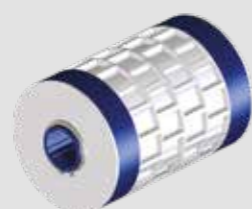
6 GEARBOX
The gearbox combined with the replacement of the metering roller allows greater precision and doubles the possibilities of use.

STANDARD METERING ROLLERS (MOST COMMON DOSAGES):

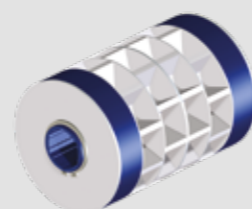
METERING ROLLER 11,5 cm³



METERING ROLLER 110 cm³

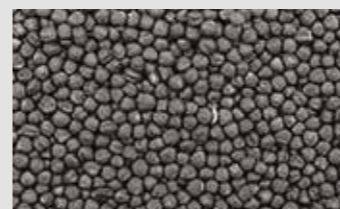


METERING ROLLER 392 cm³



IT CAN BE USED FOR:

RAPESEED



BARLEY



WHEAT



PEAS

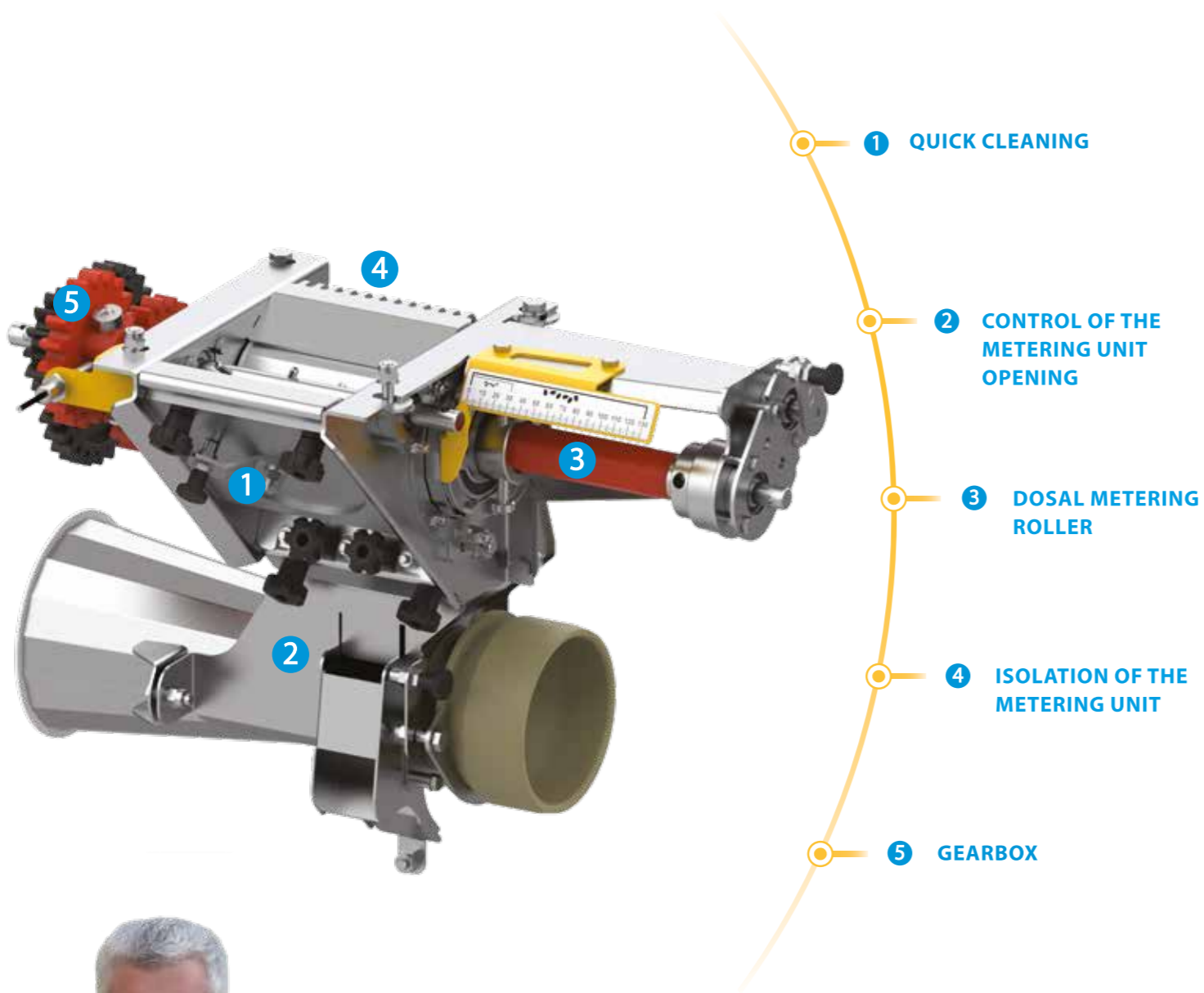


AIRON

DOSAL

Wide flexibility of use of the DOSAL volumetric metering unit: suitable for fine, large seeds and fertilizers with a few simple adjustments. Built with stainless steel anti-wear materials to ensure maximum durability and reliability, it is also suitable for treated seeds or fertilizers.

The high-performance volumetric metering unit Alpego



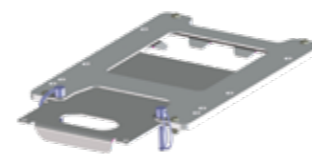
1 QUICK CLEANING
The removable back plate allows a complete and easy cleaning of the metering unit even if it remains unused for several days.



2 CONTROL OF THE METERING UNIT OPENING
The weighing door is equipped with a sensor that prevents any mistake. And it warns the operator if it remains open.



3 DOSAL METERING ROLLER
Designed for high performance, it offers a wide flexibility of use: fertilizer and large seeds in large quantities or very small seeds in very low quantities thanks to the semi-minutes function.



4 ISOLATION OF THE METERING UNIT
The guillotine door positioned at the base of the hopper allows to isolate the metering unit. Therefore (for example) it is possible to change the quantity of seeding.



5 GEARBOX
The lateral gears coupled with the Dosal system allow to increase the number of revolutions and a slow rotation of the metering unit ensuring the preservation of the seeds.

DOSAL



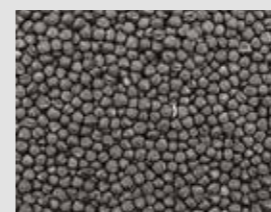
After years of using plastic metering units, we have understood the weak points and, thanks to all the studies and designs we have made, we have created our own Alpego stainless steel metering unit to guarantee maximum performance for our customers and our machines.



David Finetti
Chief sales officer Alpego France

IT CAN BE USED FOR:

RAPESEED



BARLEY



WHEAT



PEAS



FERTILIZER



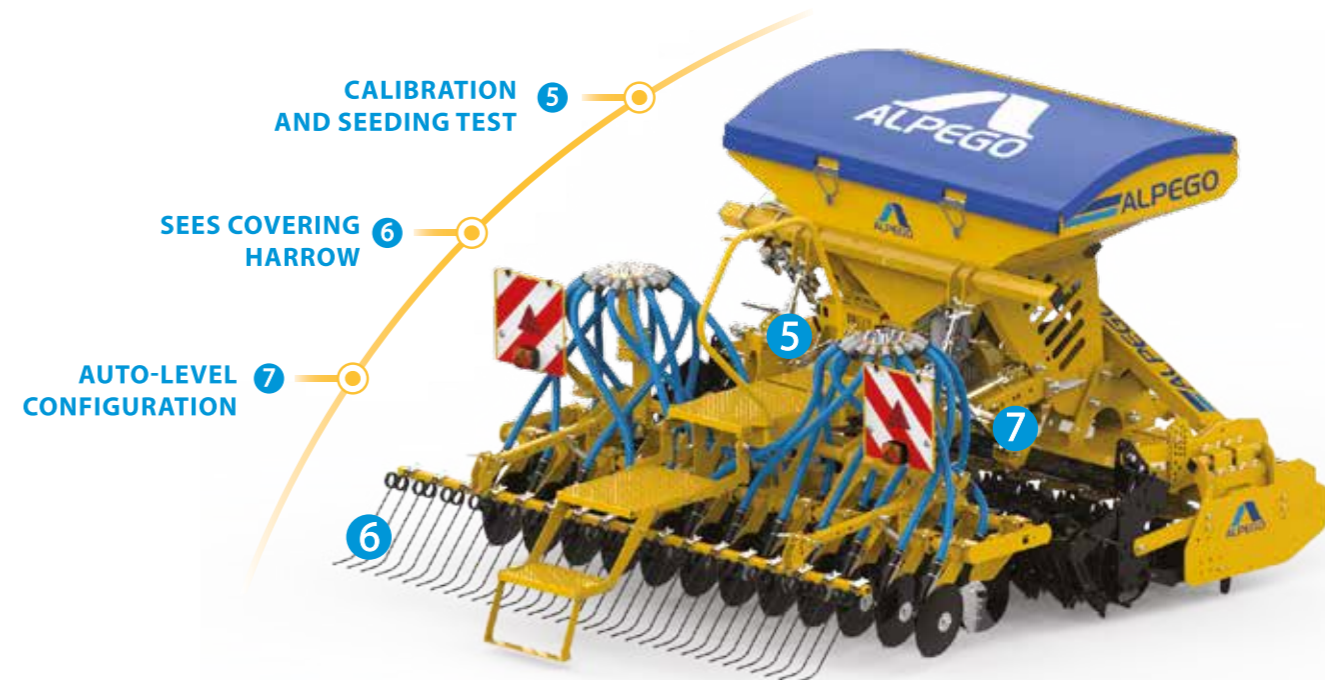
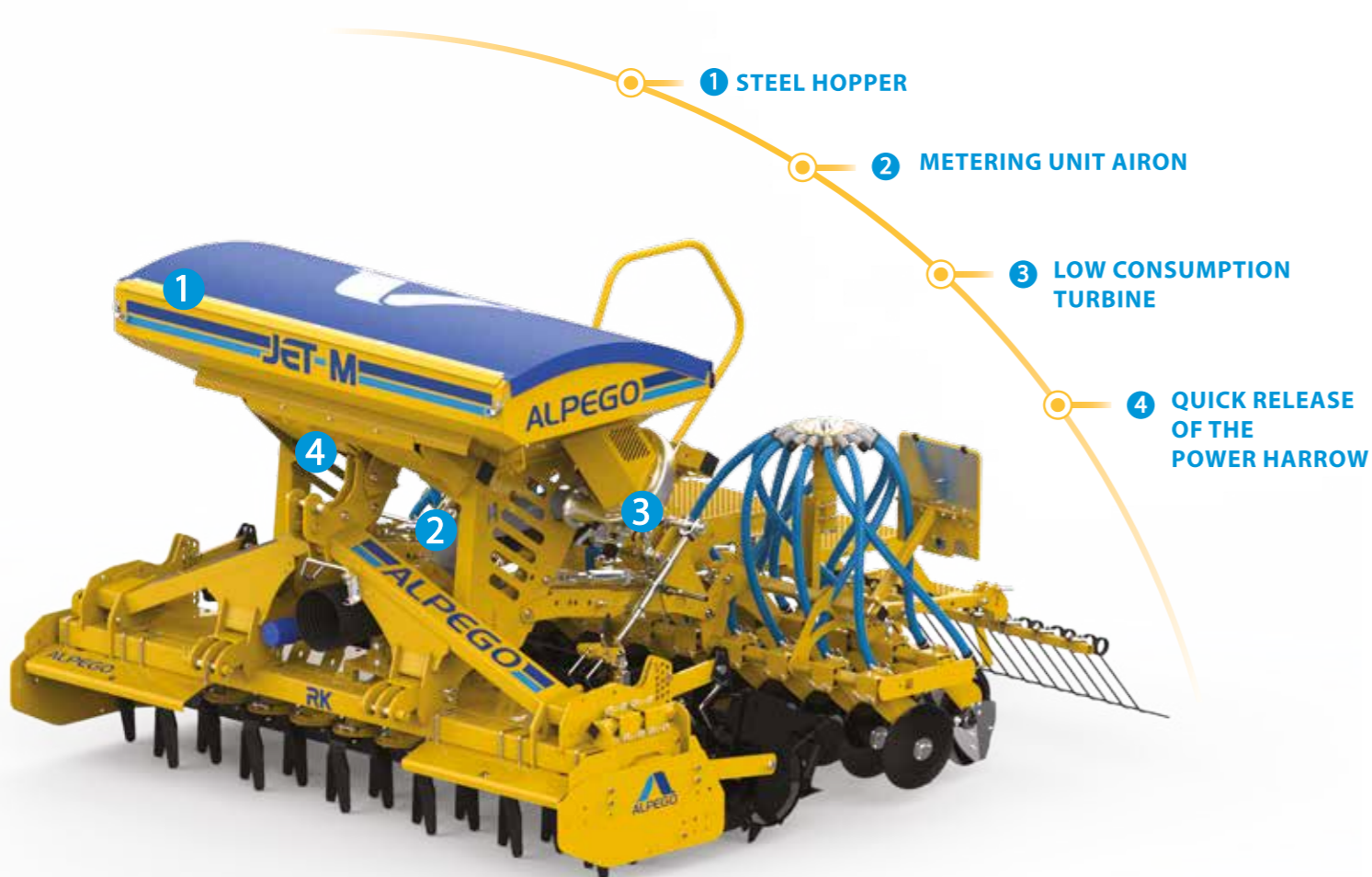


JET-M

The pneumatic seed-drill JET-M is focused on ease of use and maximum versatility. Compatible with multiple rotary harrows of the Alpego range, it can work in combination with tractors from 110 to 200 Hp.

EFFICIENT inside

A compact seed-drill with all the technologies



	JET-M 300	JET-M 350
Working width (cm)	300	350
Transport width (cm)	300	350
Number of seeding rows (nr°)	24	28
Row spacing (cm)	12.5	12.5
Hopper capacity without extension (lt)	1000	1000
Weight of the machine combined with the power harrow BF	2080	-
Weight of the machine combined with the power harrow RM	2495	2740
Weight of the machine combined with the power harrow RK	2655	2880



1

STEEL HOPPER

Large capacity (1000 l)
Designed with an advanced center of gravity to be used even with not too heavy tractors. Ergonomic and easy to access thanks to the large and sturdy retractable rear platform.



2

METERING UNIT AIRON

Simple and practical, the new metering unit AIRON is supplied as standard with 3 interchangeable metering rollers covering a wide range of use.



3

LOW CONSUMPTION TURBINE

It consumes only 19 liters / min in standard conditions allowing the use of tractors with reduced oil availability.



4

QUICK RELEASE OF THE POWER HARROW

Whatever the versions, the JET-M has been designed to be coupled as quickly and safely as possible.



5

CALIBRATION AND SEEDING TEST

Easy access to the seeding system. The seeding test is easy thanks to the easy-to-reach position of the calibration button.



6

SEES COVERING HARROW

Rear seed covering harrow centrally adjustable.



7

FAST AND AUTO-LEVEL CONFIGURATION

FAST: Maximum flexibility configuration that allows the release of the seed-drill from the implement very quickly (in less than 10 minutes) in order to use the power harrow independently.
AUTO-LEVEL: Maximum precision configuration thanks to the bar-roller constraint that allows to maintain the seeding depth even by changing the working depth of the harrow.

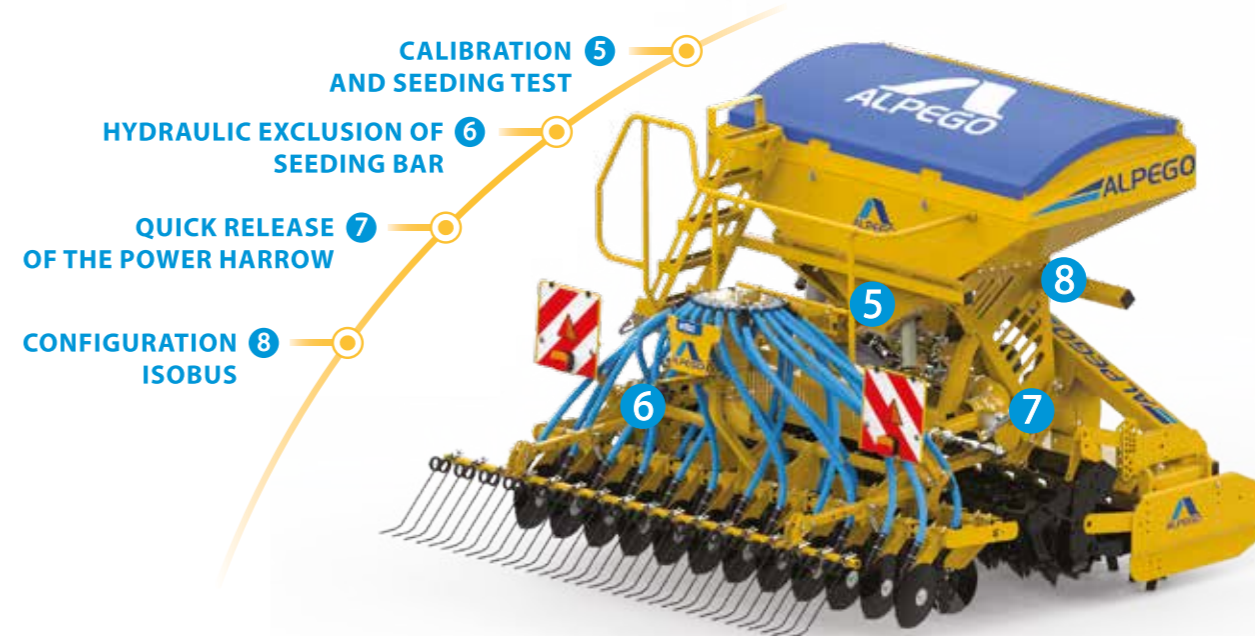
JET-M

JET-X

The premium solution for maximum performance

Jet-X is designed for professional and intensive agriculture in the most demanding conditions. Compatible with multiple power harrows of the Alpego range, it can work in combination with tractors up to 320 Hp.

PROGRESS inside



	JET-X 300	JET-X 350	JET-X 400
Working width (cm)	300	350	400
Transport width (cm)	300	350	400
Number of seeding rows (nr°)	24	28	32
Row spacing (cm)	12.5	12.5	12.5
Hopper capacity without extension (lt)	1500	1500	1500
Weight of the machine combined with the power harrow RK	2715	3050	3350
Weight of the machine combined with the power harrow RmaX	2870	3235	3555



1 STEEL HOPPER
Of large capacity (1500 l) It has been suitably designed to advance its center of gravity and its ergonomics is guaranteed by the large, robust and easy-to-access rear platform.



2 METERING UNIT DOSAL
The metering unit, entirely made of stainless steel, is very robust and reliable. It offers unparalleled performance and is designed to dose small seeds such as rapeseed up to dose fertilizers even in large quantities.



3 BAR ADJUSTMENT
Quick and easy seeding depth adjustment. A handle with a graduated bar coupled to a parallelogram allows you to set the seeding depth quickly and precisely.



4 QUICK HITCH
The new design with two side hooks attached to the sides of the roller allows you to release the seeding bar in no time.



5 CALIBRATION AND SEEDING TEST
The seeding test is facilitated thanks to the easy-to-access calibration button.



6 HYDRAULIC EXCLUSION OF SEEDING BAR
Exclusion of the hydraulic seeding bar, allows to raise and therefore exclude the seeding bar.



7 QUICK RELEASE OF THE POWER HARROW
The removal of the seed-drill from the power harrow takes place quickly and safely thanks to the quick hook connection that also allows you to disconnect all the electrical and hydraulic sockets.



8 CONFIGURATION ISOBUS
Thanks to the innovative ISOBUS (ISO11783) technology integrated in the front hopper, you have the possibility to control all its functions directly from the tractor screen.



FERTIDRILL System

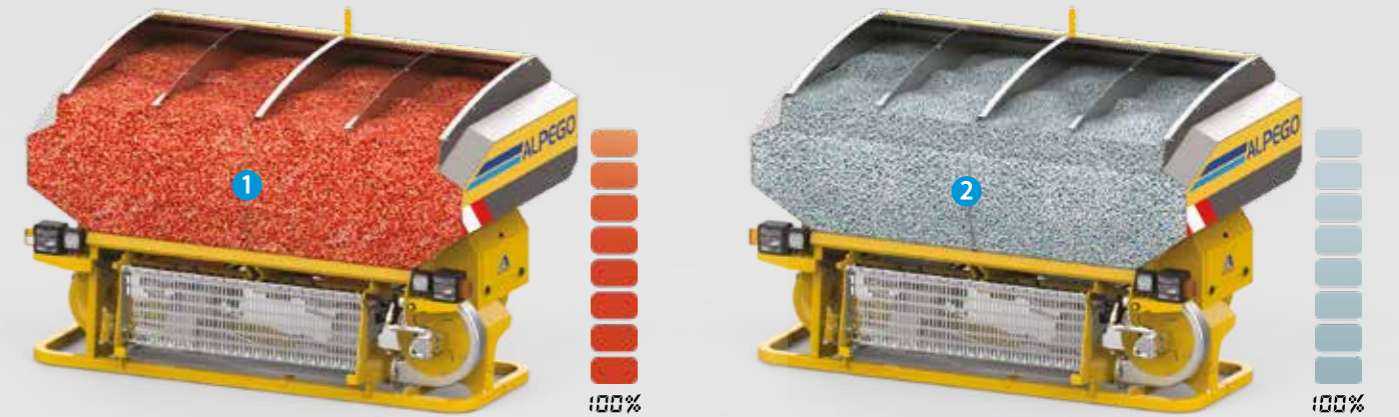
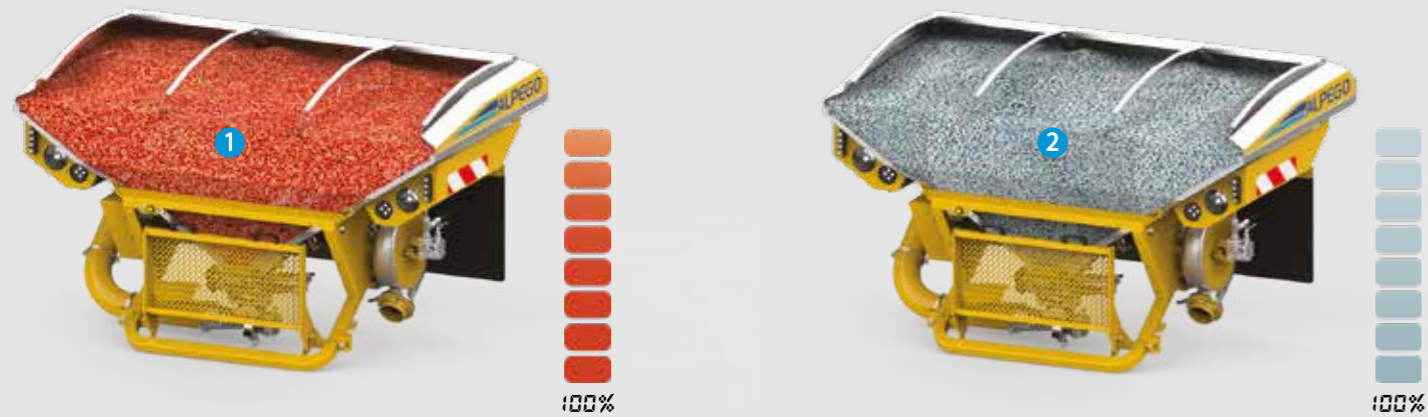
The multifunctional hoppers Fertidrill ASmaX and AS-Pro, made of stainless steel, allow you to manage the distribution of both seeds and fertilizers. They are mounted in front of the tractor of the tractor and allow you to distribute the required volume of product from the seeding unit to the distribution head, allowing multiple combinations also with different types of machines, increasing their versatility of use.

AS PRO

The AS-Pro front hopper is designed for use in combination for seeding cereals up to a width of 6m or for the distribution of fertilizer combined with different types of equipment (weeder, precision seeder, cultivator ...)

AS MAX

The multifunctional front hopper ASmaX can be used for the simultaneous distribution of seed and fertilizer. In the single product configuration it is designed for sowing cereals up to a width of 8m or for the distribution of fertilizer combined with different types of equipment (weeder, precision seeder, cultivator ...).



We have created multiple solutions for sowing and fertilization based on the concept of versatility and the result has been the creation of a range that guarantees the end user many processes, making these machines ideal for those looking for maximum performance.

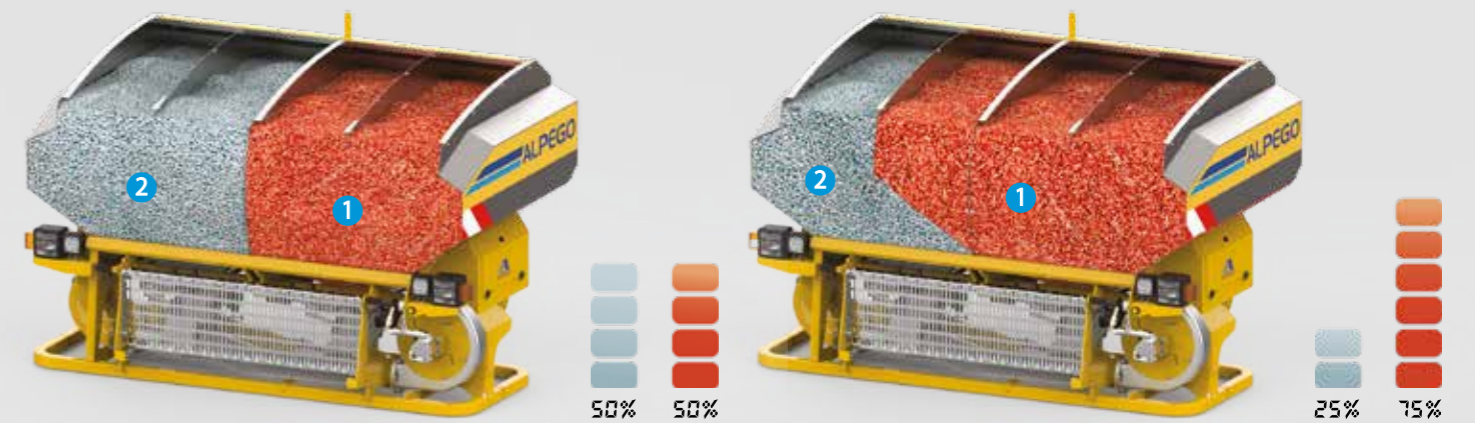
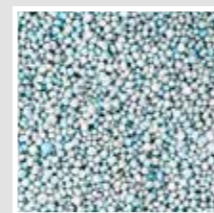


Fabio Bedin
After sales Service

1 SEEDS



2 FERTILIZER



Fertidrill AS-PRO with power harrow Alpego

Fertidrill AS-PRO with cultivators

Fertidrill AS-PRO with precision seed-drill

Fertidrill ASmaX STANDARD with power harrow Alpego

Fertidrill ASmaX BITUBE with power harrow Alpego

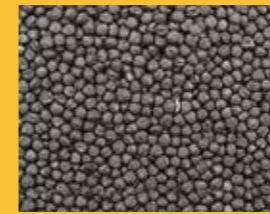
Fertidrill ASmaX with precision seed-drill

The machine is designed for professional agriculture in demanding and intense conditions. Thanks to its excellent performance and high work flows, it meets the latest precision agriculture standards and is the versatile solution for sowing or fertilizing the soil.



IT CAN BE USED FOR:

RAPESEED



BARLEY



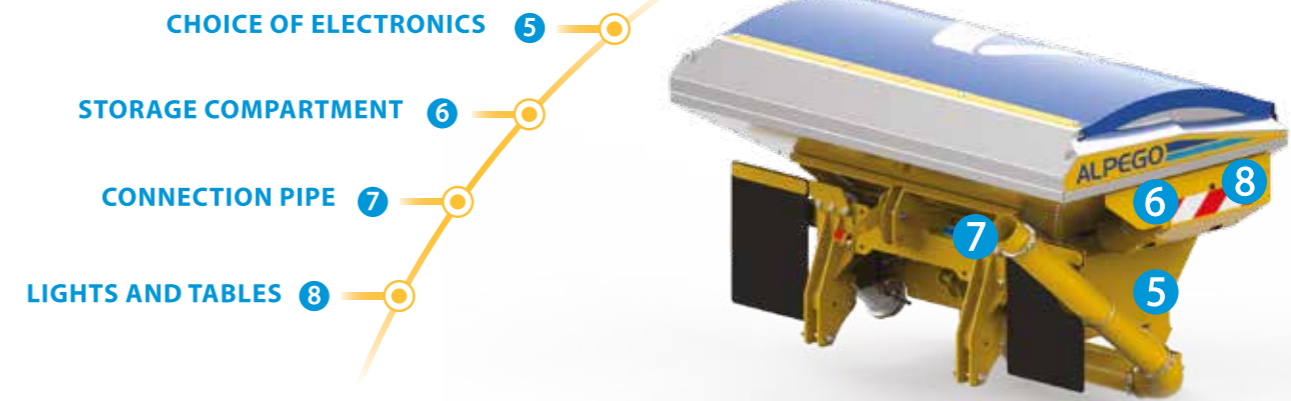
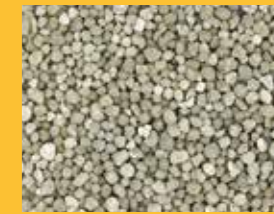
WHEAT



PEAS



FERTILIZER



	AS-PRO 300	AS-PRO 350	AS-PRO 400	AS-PRO 450	AS-PRO 500	AS-PRO 600
Working width (cm)	300	350	400	450	500	600
Transport width (cm)	300	350	400/250	250	250	250
Number of seeding rows (nr°)	24	28	32	36	40	40/48
Row spacing (cm)	12.5	12.5	12.5	12.5	12.5	12.5/15 (nr°40)
Hopper capacity without extension (lt)	1400	1400	1400	1400	1400	1400
Weight of the machine combined with the power harrow RK	2725	3060	3360	-	-	-
Weight of the machine combined with the power harrow RmaX	2880	3245	3565	-	-	-
Weight of the machine combined with the power harrow DP	-	-	3515	-	3935	4315
Weight of the machine combined with the power harrow DKTOP	-	-	3985	4155	4425	4955
Weight of the machine combined with the power harrow DmaX	-	-	-	4305	4915	5475
Weight of the machine combined with the disc harrow MG	2470	2835	3075	-	-	-



1 STAINLESS STEEL HOPPER
Large capacity hopper (1400l) and extendable on request with chamfered profile for better visibility from the tractor (+ 20%). Totally in stainless steel it can be used for sowing or fertilization.



2 METERING UNIT DOSAL
The metering unit, entirely made of stainless steel, is very robust and reliable. It offers unparalleled performance and is designed to dose small seeds such as rapeseed up to dose fertilizers even in large quantities.



3 CALIBRATION AND SEEDING TEST
Easy access to the seeding system. The seeding test is easy thanks to the easy-to-reach position of the calibration button.



4 NEW ELECTRIC MOTOR
New electric motor upgraded to 250 W to guarantee the performance of the Dosal metering unit.



5 CHOICE OF ELECTRONICS
The hopper is equipped with fully electronic seeding management. In the ISOBUS electronically controlled version the machine is fully controlled from the tractor monitor, taking advantage of all compatible functions and specific Task Controller.



6 STORAGE COMPARTMENT
Convenient storage compartment with door, essential for holding the weighing kit and necessary tools.



7 CONNECTION PIPE
Front/rear connection kit including tubing, cable extensions and adjustable bracket.



8 LIGHTS AND TABLES
LED front lights (low beam/high beam), LED courtesy lights and reflective front and side tables.

Configuration

Excellent versatility for any application

To make the hopper increasingly suitable for the needs of farmers who are always looking for the best from their machines, Alpego has designed the AS-Pro hopper that can be used in two different settings.

STANDARD:

Alpego solution for combined seeding of cereals up to 8m

FERTILIZER:

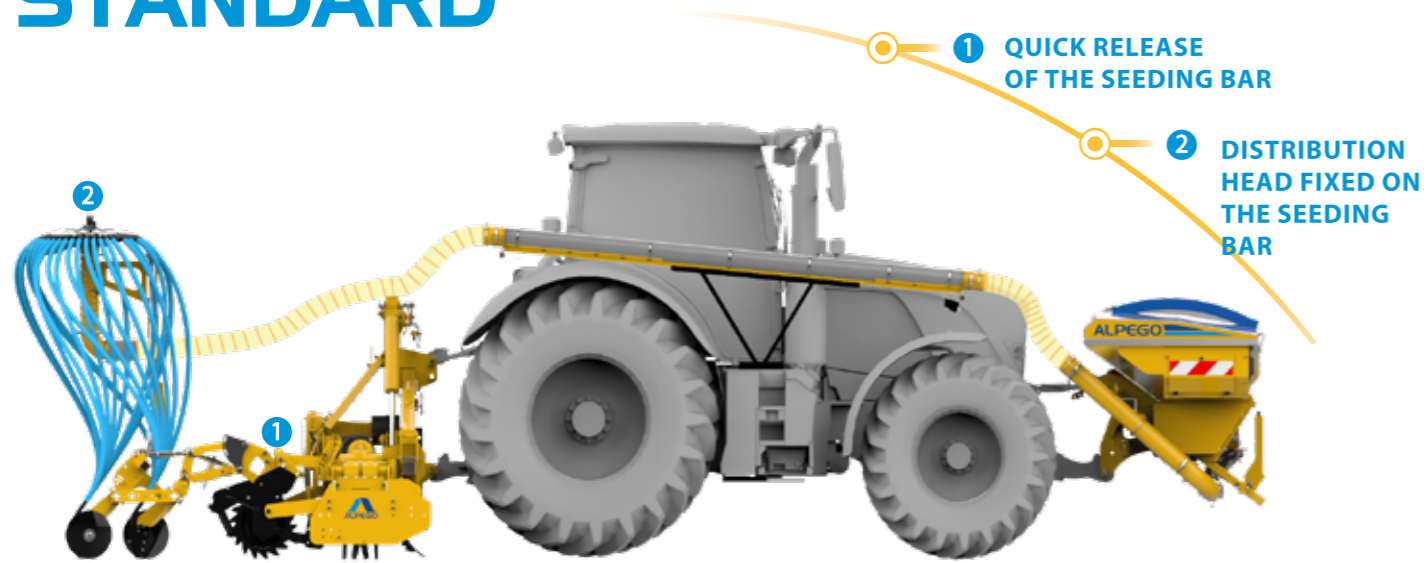
Solution for fertilization in combination with various machines (single seeders, sachers, cultivators ...)

In the standard configuration, the power harrow and the seeding bar close at 2,5m width for road transport.



Centralized distribution head

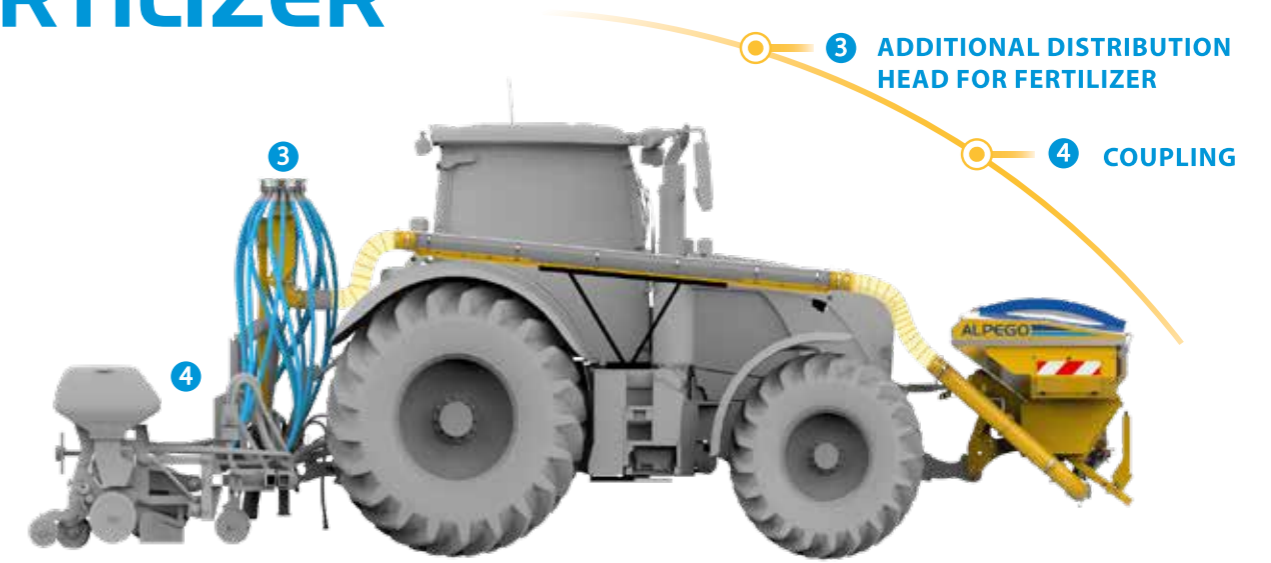
STANDARD



The standard configuration includes the front hopper, the relative seeding bars and the **centralized distribution head, fixed on the bar**, and equipped with the Tramline system for managing the tractor passes.

	3m	3,5m	4m	4,5m	5m	6m	7m	8m
Rigid Power harrow RM	■	■	■					
Rigid Power harrow RK	■	■	■					
Rigid Power harrow RMAX	■	■	■					
Foldable Power harrow DP			■		■	■		
Foldable Power harrow DKTOP			■	■	■	■		
Foldable Power harrow DMAX				■	■	■		
Disc harrow Maratona MG	■	■	■					

FERTILIZER



The fertilizer configuration, with a dedicated distribution head, provides the front hopper in combination with various machines: weeders, precision seed-drills, cultivators, rollers, etc ...



Quick release system of the seeding bar from the power harrow.



The intervention of the coulters on the ground is minimal to avoid loss of moisture from the soil, mix wet and dry soil near the seed or reduce water conductivity from the lowest layers to the surface.



Mattia Trevini
Doctor Agronomist



15"



1

QUICK RELEASE OF THE SEEDING BAR

The seeding bar can be removed quickly and safely in just 15 minutes thanks to the quick-release parallelogram system on the roller. The folding versions are equipped with parking feet as standard.

2

DISTRIBUTION HEAD FIXED ON THE SEEDING BAR

Centralised distribution head fixed on the seeding bar (fixed and folding versions) to speed up safe coupling and uncoupling operations.

3

ADDITIONAL DISTRIBUTION HEAD FOR FERTILIZER

A dedicated distribution head with a reduced number of outlets is available for the distribution of fertilizer combined with different types of equipment.

4

COUPLING

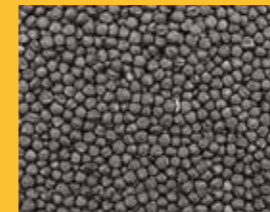
The hopper can be combined with various types of machines for fertilizing or seeding.

The large capacity multifunctional front hopper Fertidrill ASmaX is completely made of stainless steel and can be used with both seeds and fertilizer.



IT CAN BE USED FOR:

RAPESEED



BARLEY



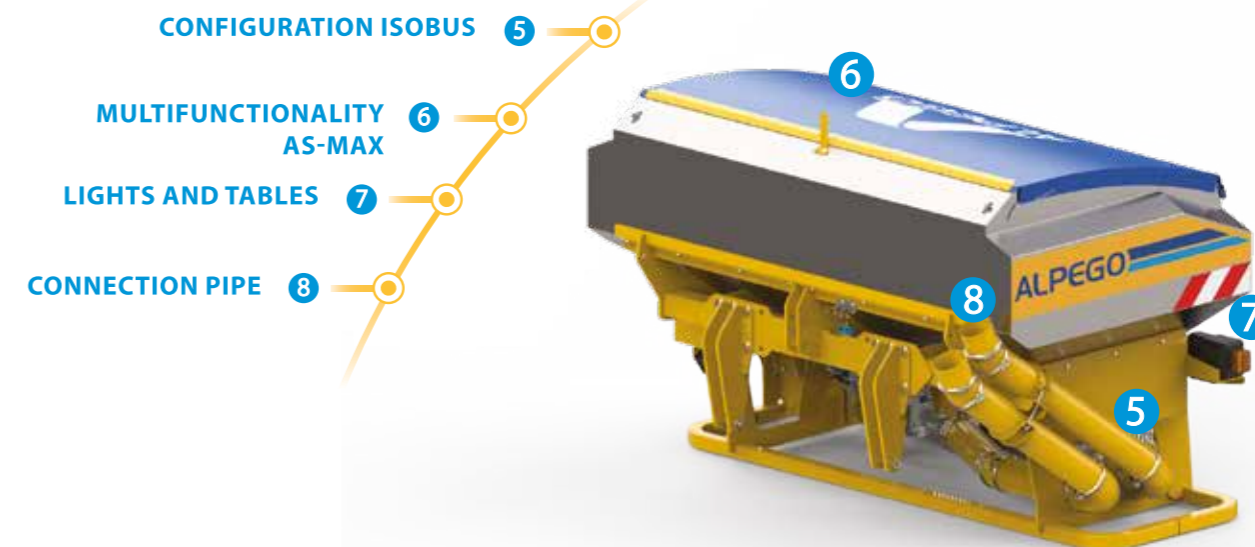
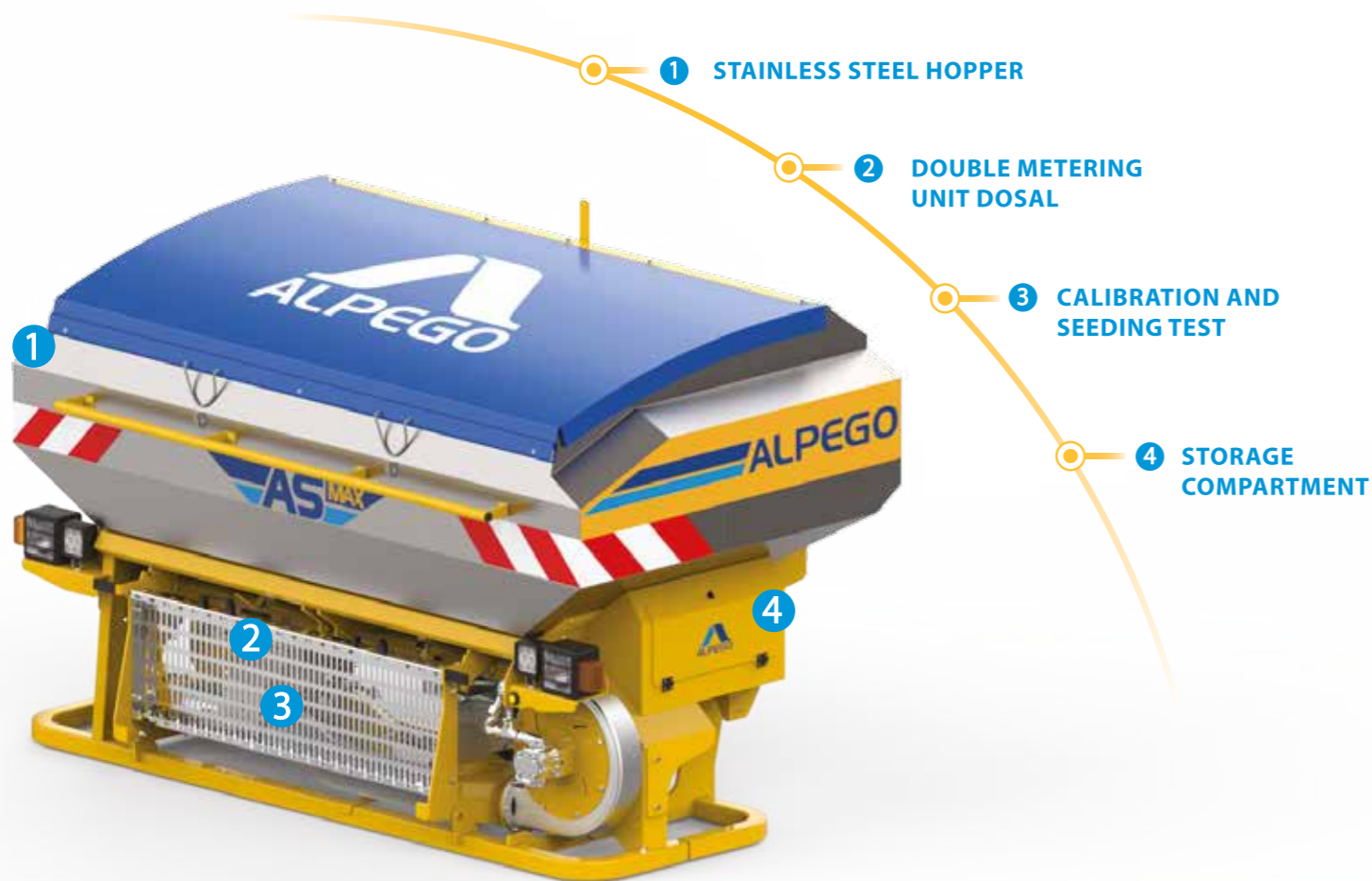
WHEAT



FERTILIZER



FERTILIZER AND SEED



	ASmaX-400	ASmaX-450	ASmaX-500	ASmaX-600	ASmaX-700	ASmaX-800
Working width (cm)	400	450	500	600	700	800
Transport width (cm)	250	250	250	250	250	250
Number of seeding rows (nr°)	32	36	40	48	54	62
Row spacing (cm)	12.5	12.5	12.5	12.5/15 (Nr*40)	12.5	12.5
Hopper capacity without extension (lt)	2300	2300	2300	2300	2300	2300
Weight of the machine combined with the power harrow DKTOP	4440	4620	4900	5450	-	-
Weight of the machine combined with the power harrow DmaX	-	4770	5390	5870	6700	7290



1 STAINLESS STEEL HOPPER
Large capacity hopper (2300l). Totally in stainless steel.



2 DOUBLE METERING UNIT DOSAL
The metering units, entirely made of stainless steel, are very robust and reliable. They offer unparalleled performance and are designed to dose small seeds or fertilizers.



3 CALIBRATION AND SEEDING TEST
Easy access to the seeding system. The seeding test is easy thanks to the easy-to-reach position of the calibration button.



4 STORAGE COMPARTMENT
Convenient storage compartment with door, essential for holding the weighing kit and necessary tools.



5 CONFIGURATION ISOBUS
Thanks to the innovative ISOBUS (ISO11783) technology integrated in the front hopper, you have the possibility to control all its functions directly from the tractor screen.



6 MULTIFUNCTIONALITY AS-MAX
It can be used for the simultaneous distribution of seed and fertilizer or for sowing up to a width of 8m or for the distribution of fertilizer in combination with different types of equipment.



7 LIGHTS AND TABLES
LED front lights (low beam/high beam), LED working lights and reflective front and side tables.



8 CONNECTION PIPE
Front/rear connection kit including tubing, cable extensions and adjustable bracket.



Configuration

Excellent versatility for any application

To make the hopper increasingly suitable for the needs of farmers who are always looking for the best from their machines, Alpego has designed the hopper AS-Pro that can be used in three different settings.

STANDARD:

Alpego solution for combined sowing up to 8m

BITUBE:

Alpego solution for simultaneous seeding and fertilization up to 6m

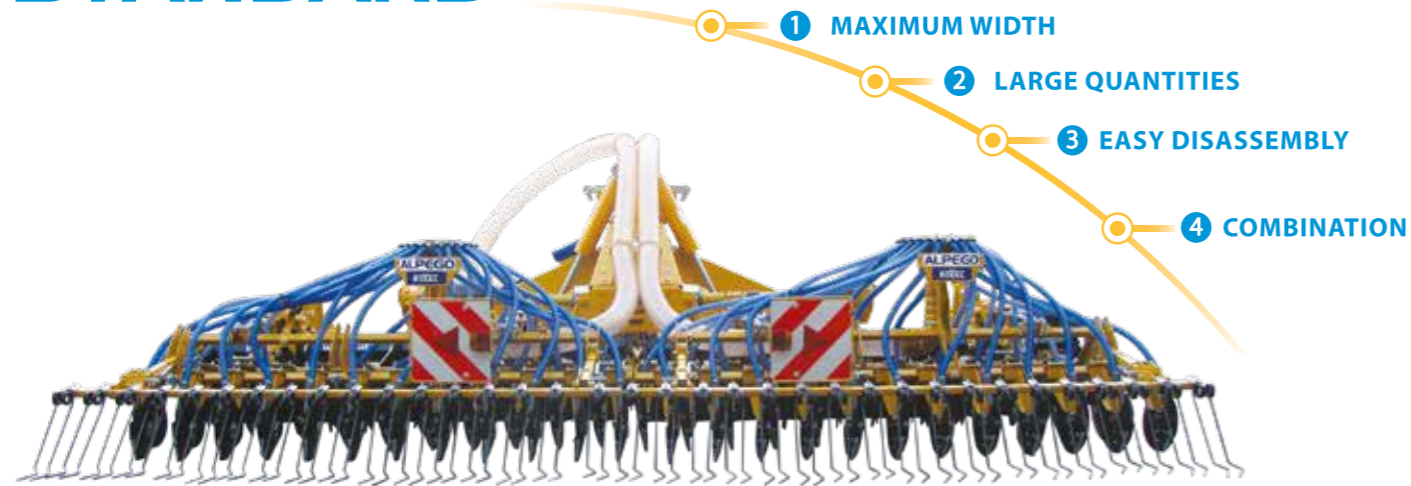
FERTILIZER:

solution for fertilization in combination with various machines (precision seed-drills, weeders, cultivators)

In the standard and Bitube configuration, the power harrow and the seeding bar close at 2.5m in width for road transport.



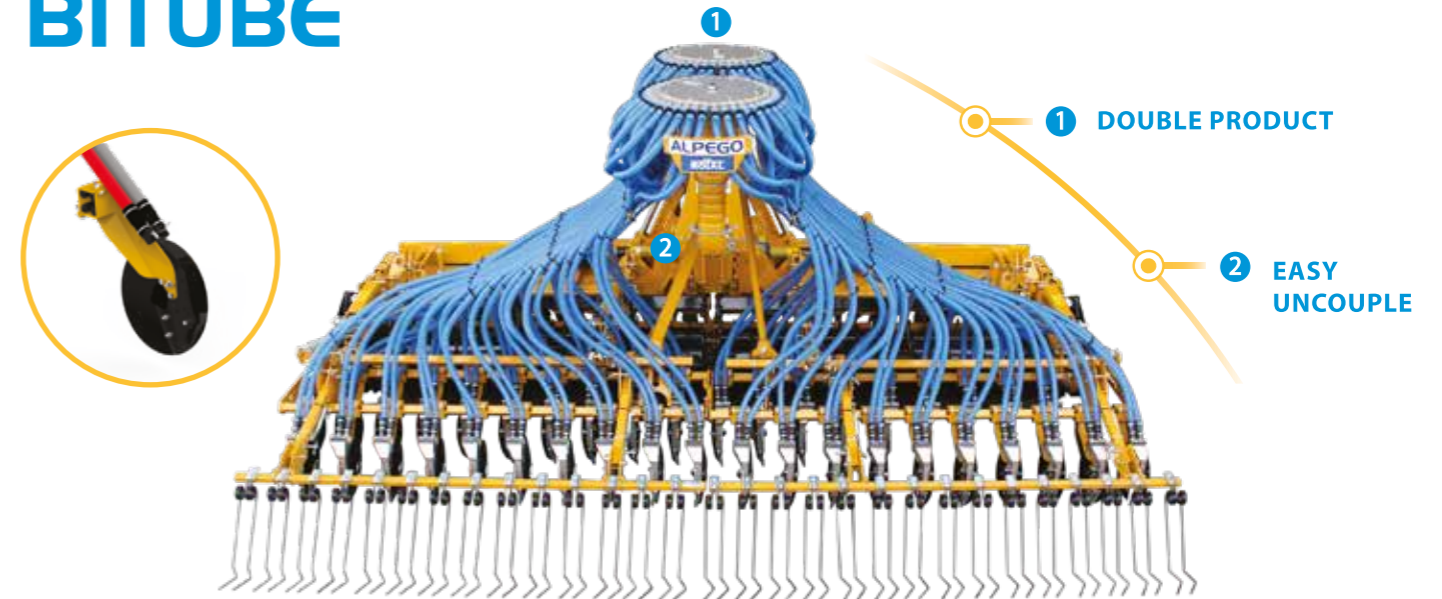
STANDARD



The standard configuration consists of: front hopper, the relative seeding bars and the centralized distribution head fixed on the seeding bars (with the possibility of mounting the Tramline system on the distribution head for managing the tractor passes).

		4m	4,5m	5m	6m	7m	8m
Foldable Power harrows DKTOP		■	■	■	■		
Foldable Power harrows DMAX			■	■	■	■	■

BITUBE



The standard configuration consists of: front hopper, the relative seeding bars and the double centralized distribution head fixed on the seeding bars (with the possibility of mounting the Tramline system on the distribution head for managing the tractor passes).

		4m	4,5m	5m	6m	7m	8m
Foldable Power harrows DKTOP		■	■	■	■		
Foldable Power harrows DMAX			■	■	■		

1

MAXIMUM WIDTH

The seeding combination can reach 8m working width, making the Alpego solution unique on the market thanks to the high power available.

2

LARGE QUANTITIES

Studied, designed and built to maximize seeding and fertilization, both thanks to the very large working width and the technologies available.

3

EASY DISASSEMBLY

Dismantling is facilitated by the integration of the distribution system with the seeding bar. Furthermore, all hydraulic and electrical outlets can be disconnected through the use of quick couplings.

4

COMBINATION

The front hopper can be combined with folding power harrows, from a width of 4 to 8m.

1

DOUBLE PRODUCT

Through the two centralized distribution heads with independent joints, the seeds and fertilizer are simultaneously deposited in the ground making this configuration indispensable for those looking for maximum yield from a single machine.

2









EASY UNCOUPLE

The dismantling of the seeding bars is quick and safe thanks to the union of the two distribution heads with the bars in a single body and the presence of quick couplings for all the hydraulic and electrical outlets.

Which implement for which seed-drill?

Just choose according to your needs

The combined machines ALPEGO offer cutting-edge solutions thanks to many years of experience in tillage and sowing. They have been designed for difficult working conditions and they guarantee maximum reliability and versatility.

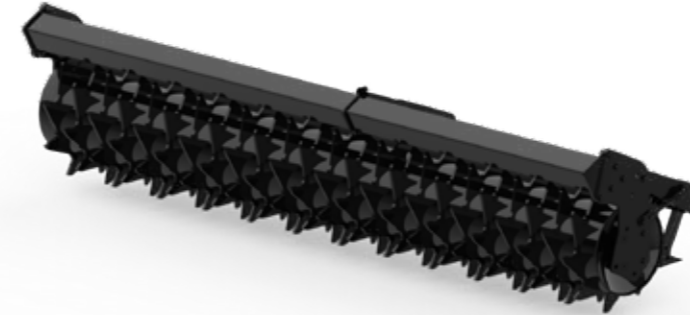
		JET-M	JET-X	AS-Pro	ASmaX
BF		Thanks to its 4 rotors per meter, as all Alpego power harrows, and its reduced weight combined with the Alpego know-how, BF is the ideal combination implement for soil preparation for compact tractors.	* only for FAST version		
RM		Equipped with rollers of large diameters and equipped with Twin Force technology with conical bearings, RM is the ideal combination implement for those looking for performance combined with a low weight.			
RK		Thanks to the Twin Force mechanics and the structural frame, RK is designed to support high capacity seed-drills. It guarantees great speed for advancement and performance.			
RmaX		High-range power harrow, designed for the most difficult conditions. This machine is suitable for high power and is equipped with the Twin Force series Max.			
DP		Solid design and synonymous of reliability, DP fascinates with the quality of the workmanship. An excellent compromise between weight and performance, it is an excellent choice when acquiring a combination of folding sowing.			
DKTOP		Bestseller in the Alpego power harrows range, DKTOP benefits from the Twin Force technology that combines reliability, robustness and performance. Equipped with high performance gearboxes, it constitutes the perfect balance between weight and performance.			
DmaX		The flagship model DmaX is a technological concentrate of our know-how. Designed for very powerful tractors, it is the reference point for foldable power harrows.			
MG		Equipped with 2 rows of discs with fishbone configuration for a uniform preparation, it allows to work in the presence of crop residues. Thanks to the energy saving and the absence of maintenance (bearings lubricated for life), MG disc cultivators allow to optimize costs.			

The choice of the roller

For a perfect compaction of the soil

The rear roller performs the function of recompacting the seed bed after tillage.

Alpego offers a wide range of rollers, for an optimal processing result.



PACKER ROLLER

The Packer roller is the versatile roller for excellence. It offers a distribution of weights on the entire surface. With a diameter of 480, 520 or 570 mm, there is a limited risk of jamming even when the soil is sticky or in the presence of crop residues. The centrally adjustable and accessible scrapers guarantee perfect cleaning. The packer roller can work both alone and combined, its versatility allows it to work on light, clayey, silty, dry and tenacious soils.



TRAPEZE ROLLER

The notched cast-iron roller ridges are spaced 12.5 cm or 15 cm depending on row spacing. With its diameter of 505 mm it combines a perfect rotation and a pressing of the seeding line. Designed for the combination can also work alone. It adapts perfectly to all types of dry or wet soil even in the presence of stones or crop residues.



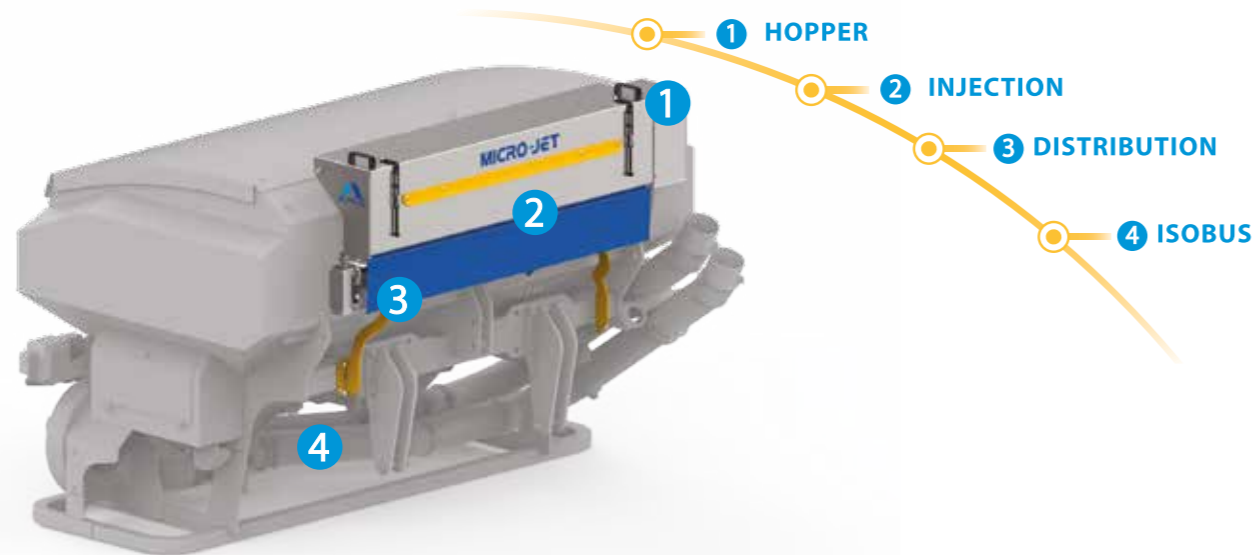
OTICO ROLLER

This roller is rubber-coated with the ridges spaced 12.5 cm. The roller is intended for light, moist or clay soils, and it compacts the furrow in which the seed will be laid. The rubber-covered surface does not allow the soil to stick, especially in the presence of very tacky and sticky soils, however it is not advisable to use in presence of stones.

MICRO-JET

Microgranulator for granular products or small seeds with a capacity of 120 litres, forced product injection directly into the metering unit and fully electric distribution with ISOBUS control.

Additional microgranulator



MICRO-JET AS^{PRO}



2 PRODUCTS DISTRIBUTED

MICRO-JET AS^{MAX}



3 PRODUCTS DISTRIBUTED*
*in bitube configuration

1 HOPPER
Stainless steel hopper with a volume of 120 litres designed for mounting on Alpego multi-purpose hoppers (ISOBUS versions only). Cannot be supplied individually, separated from the seed drill.

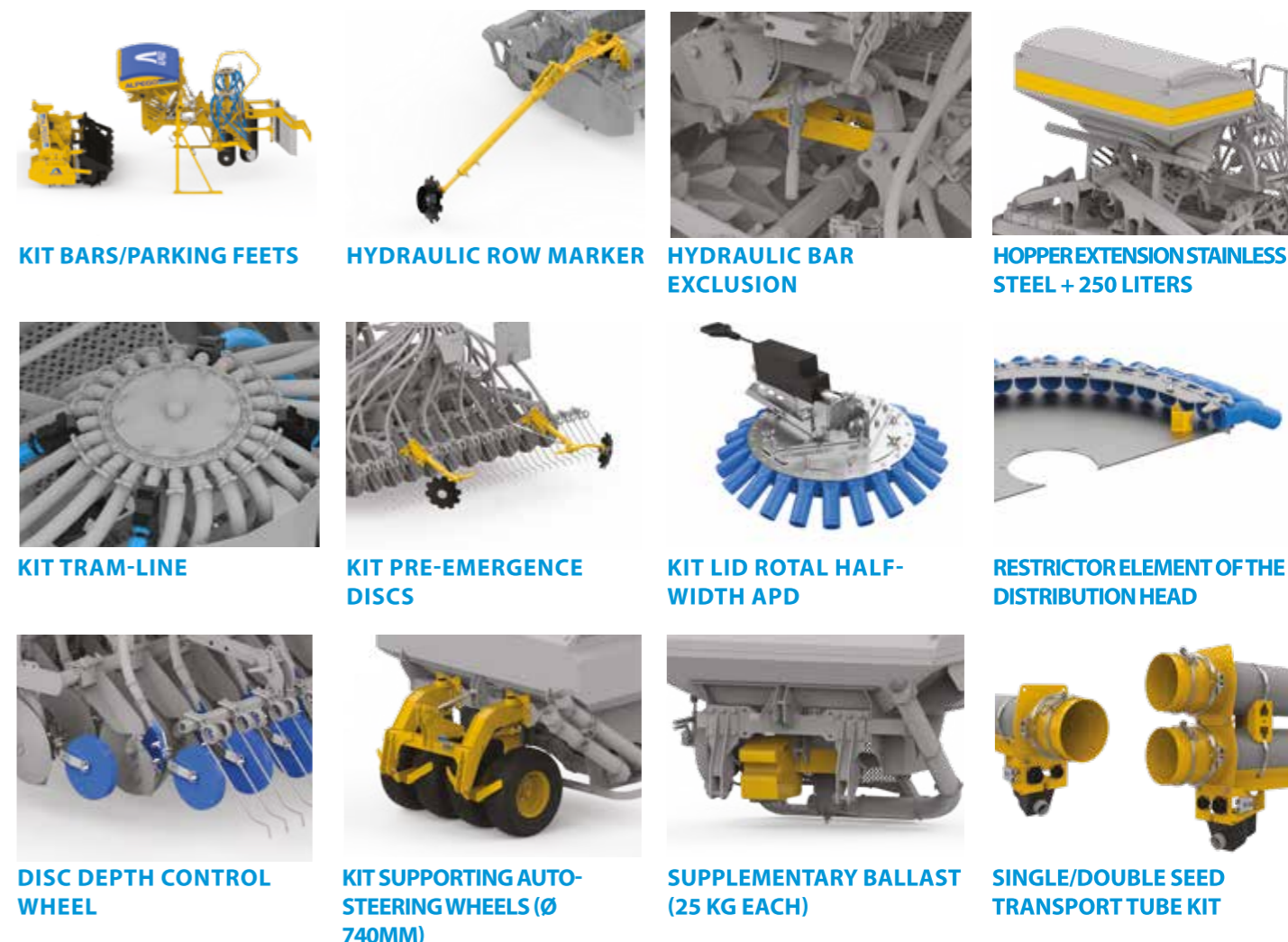
2 INJECTION
Forced injection of the product with a blowing system directly into the DOSAL metering unit(s), to be distributed together with the main product(s).

3 DISTRIBUTION
Fully electronic product distribution with 12VDC gear motor (ratios to be chosen for different volumes).

4 ISOBUS
Using the machine with the ISOBUS Universal Terminal main monitor. Exploitation of all tasks such as: VRT, TC-GEO, TC-SC and 1/2 machine and tramline.

Which accessory for which seeder?

For perfect sowing of the soil



Options	JET-M	JET-X	ASPro	ASmaX
Hopper parking stands kit / Rubber bar parking feet				
Kit pre-emergence discs				
Hydraulic bar exclusion				
Hopper extension stainless steel + 250 liters	-			-
Kit Tram-Line				
Kit pre-emergence discs				
Kit lid rotal half-width APD	-			
Restrictor element of the distribution head				
Disc depth control wheel				
Kit supporting auto-steering wheels (ø 740mm)	-	-		
Supplementary ballast (25 kg each)	-	-		
Single/double seed transport tube kit (in addition – not standard)	-	-		
Microjet	-	-		

Option Standard - Not available

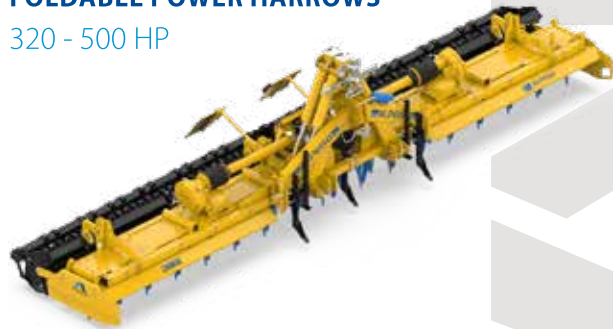
RIGID POWER HARROWS

40 - 320 HP



FOLDABLE POWER HARROWS

320 - 500 HP



SUBSOILERS

50 - 500 HP



ROTARY CULTIVATORS AND STONE BURIERS

50 - 500 HP



SEED-DRILLS

75 - 320 HP



FRONT HOPPERS

90 - 500 HP



CULTIVATORS

110 - 270 HP



MULCHERS

40 - 160 HP

