

ANRIN

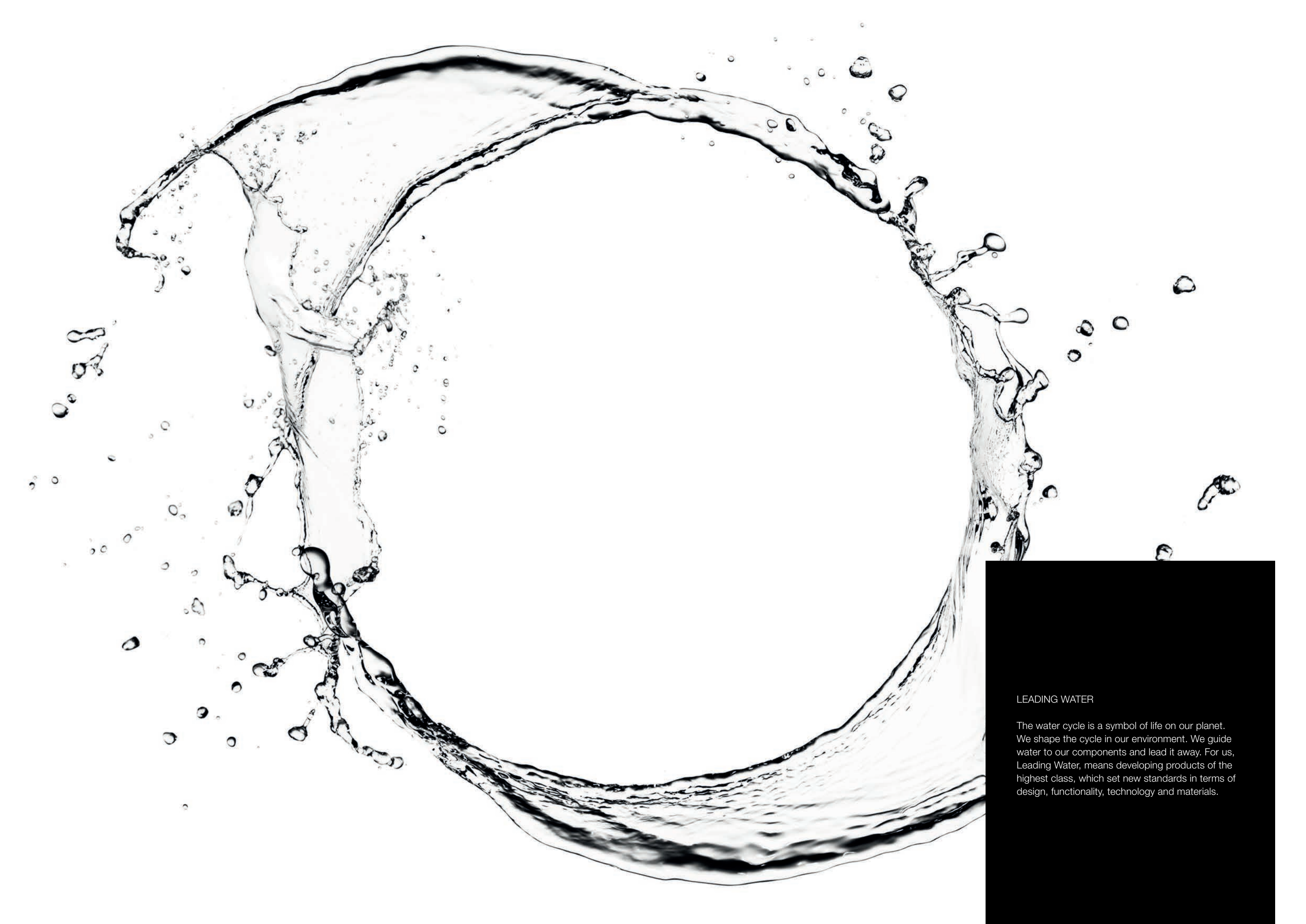
LEADING WATER



functional
aesthetics



LEADING WATER	04
OUR BRAND DNA	06
DESIGN	08
PERFORMANCE	12
QUALITY	16
FACTS AND FIGURES	20
DESIGN RANGE	22
ANRIN IN EUROPE	24
ONE TRIBE	26
OVAL GRIP DESIGN	28
LIVING WITH THE RAIN	30



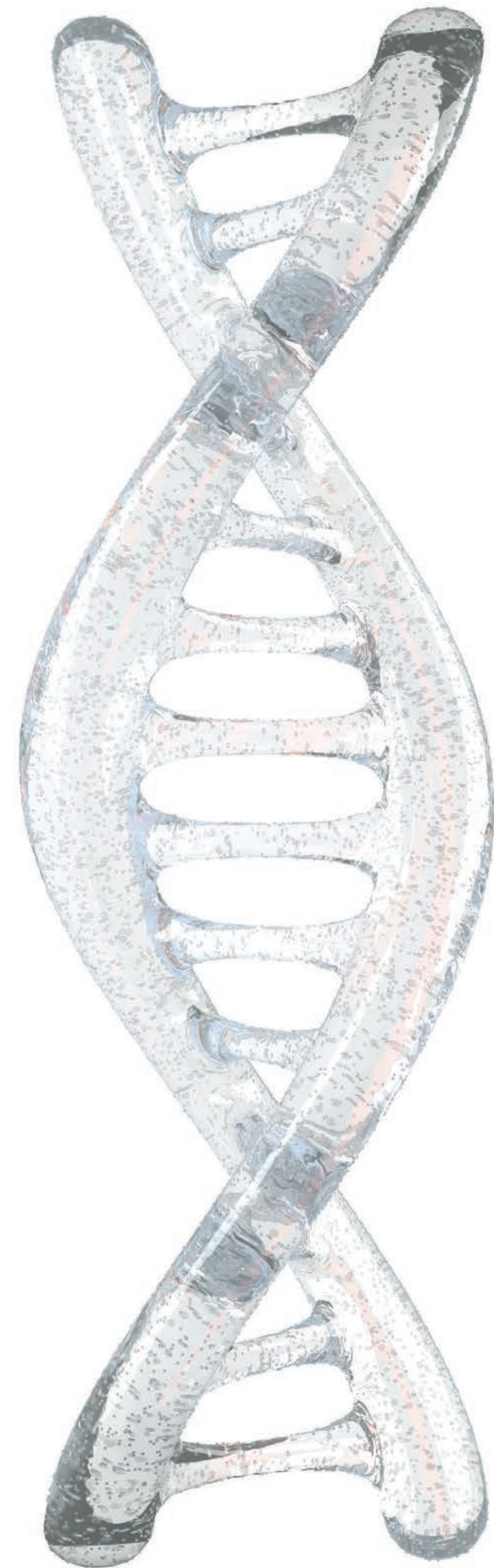
LEADING WATER

The water cycle is a symbol of life on our planet. We shape the cycle in our environment. We guide water to our components and lead it away. For us, Leading Water, means developing products of the highest class, which set new standards in terms of design, functionality, technology and materials.

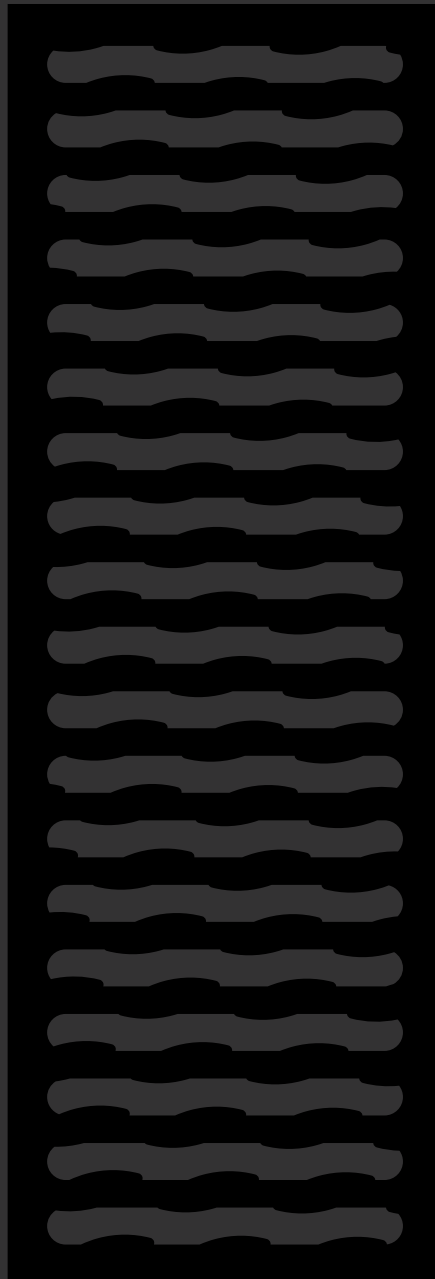
OUR BRAND DNA

Water is part of our brand's DNA

Water is unique and fascinating. Water is the source of all life. Water is part of our brand's DNA.



DESIGN



In touch visuals

For us, design means more than just defining the appearance of a product. Materials, haptics and durability are essential factors that characterise ANRIN products along with their appearance. We are a design-oriented company. Our surface structures can be found all over Europe.

A man in a teal shirt and dark trousers walks from left to right, holding a transparent umbrella. He is carrying a black folder or bag under his arm. The background is a modern building with a facade of vertical, illuminated slats that create a rhythmic pattern of light and shadow. The ground is wet and reflective, mirroring the building's lights and the man's figure. The overall mood is urban and contemporary.

We are a
part of all the
cityscapes
across
Europe.
Design is in
the detail.



PERFORMANCE

We shape water

We deliver the highest level of performance and quality. Made in Germany. The ability to innovate and maintain constant quality control is part of day-to-day business. The simple assembly, low transport weight, and ongoing development of materials ensure constant further development of our products. Our products are subject to high technical requirements. Ever new, creative, and patented channel and grate systems testify to this.

The design determines the choice of suitable channel – we ensure that it works. We deliver the right technology for every requirement. Our products are guaranteed to cope with high loads and enormous quantities of water.



QUALITY

In our element.
We offer the highest quality.

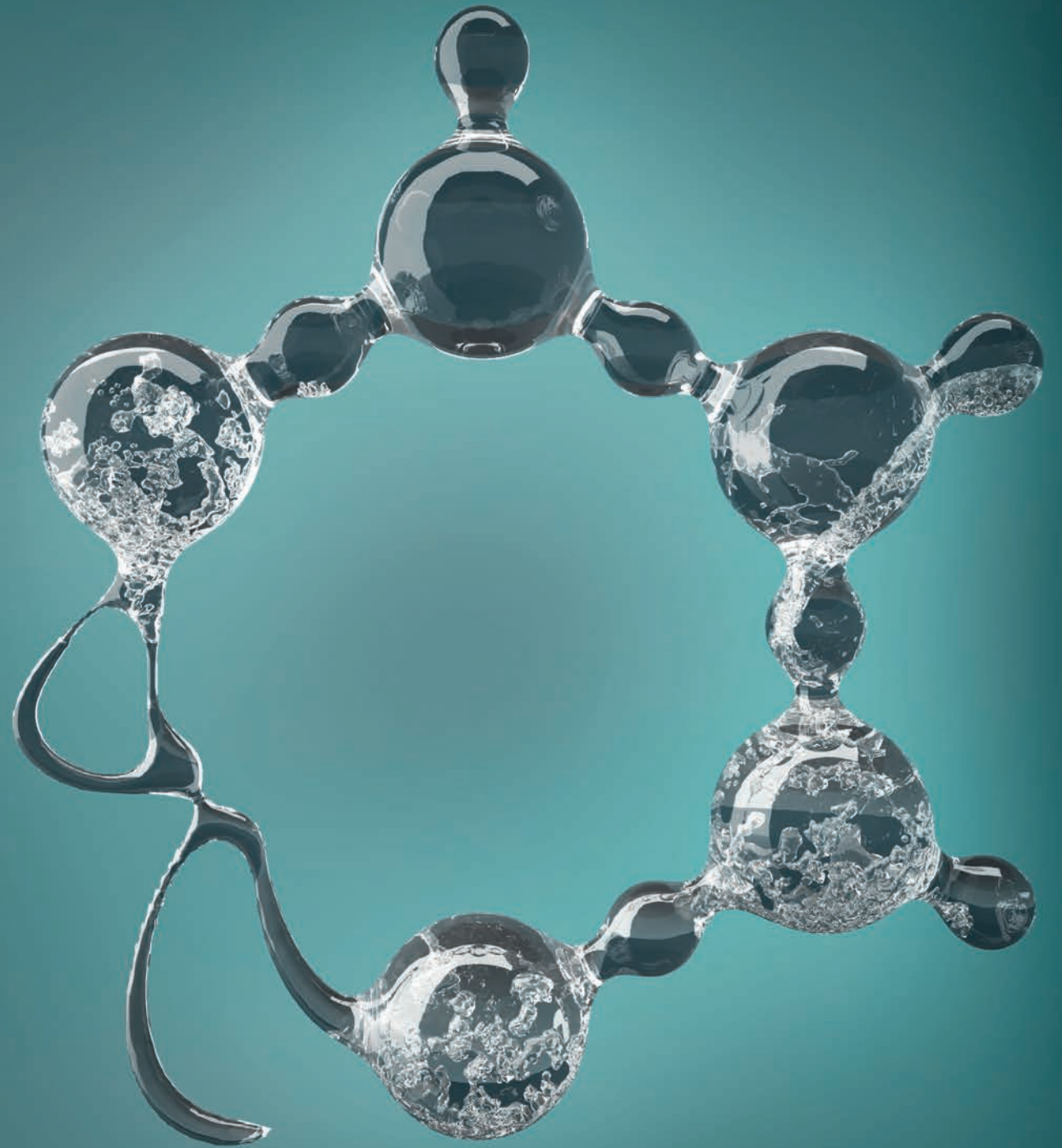
The basis – Polymer concrete


Consisting of naturally occurring quartz and resin, the material has particularly advantageous structural and ecological characteristics.

In comparison with conventional cement-bound materials, polymer concrete enables the creation of unit weights that are easy to handle. This saves time and money when processing components on site.

The high quality of the individual components and the closed material matrix make the ANRIN polymer concrete liquid-tight and highly corrosion-resistant to a large number of other substances. This allows areas to be constructed the drain off rainwater in a targeted manner, and reliably protect the groundwater from ecological contamination.

Our drainage systems (KE & SF) have been tested and certified in accordance with DIN EN 1433 and KIWA BRL 5211.





Understanding water is an elementary challenge. Only by understanding our products down to the last detail and influencing the chemistry of things can we fulfil the high demands placed upon us. We deliver „Made in Germany“ quality: resistant to many aggressive chemicals, suitable for drinking water, frost-resistant, de-icing salt resistant, recyclable and highly resilient.

FACTS AND FIGURES

Millions of metres of laid channel and DIN EN ISO 9001 certification vouch for our high quality. We place special emphasis on technical and application-related advice.

Thanks to our outstanding distribution performance, we can deliver to any construction site in Germany within a maximum of 48 hours, as well as to many other countries around the world within a few days.

At our central production and logistics facility in Anröchte, North Rhine-Westphalia, we have been developing and producing pioneering polymer concrete drainage channels and cover gratings since 1972, for all kinds of physical and design requirements in modern line drainage.



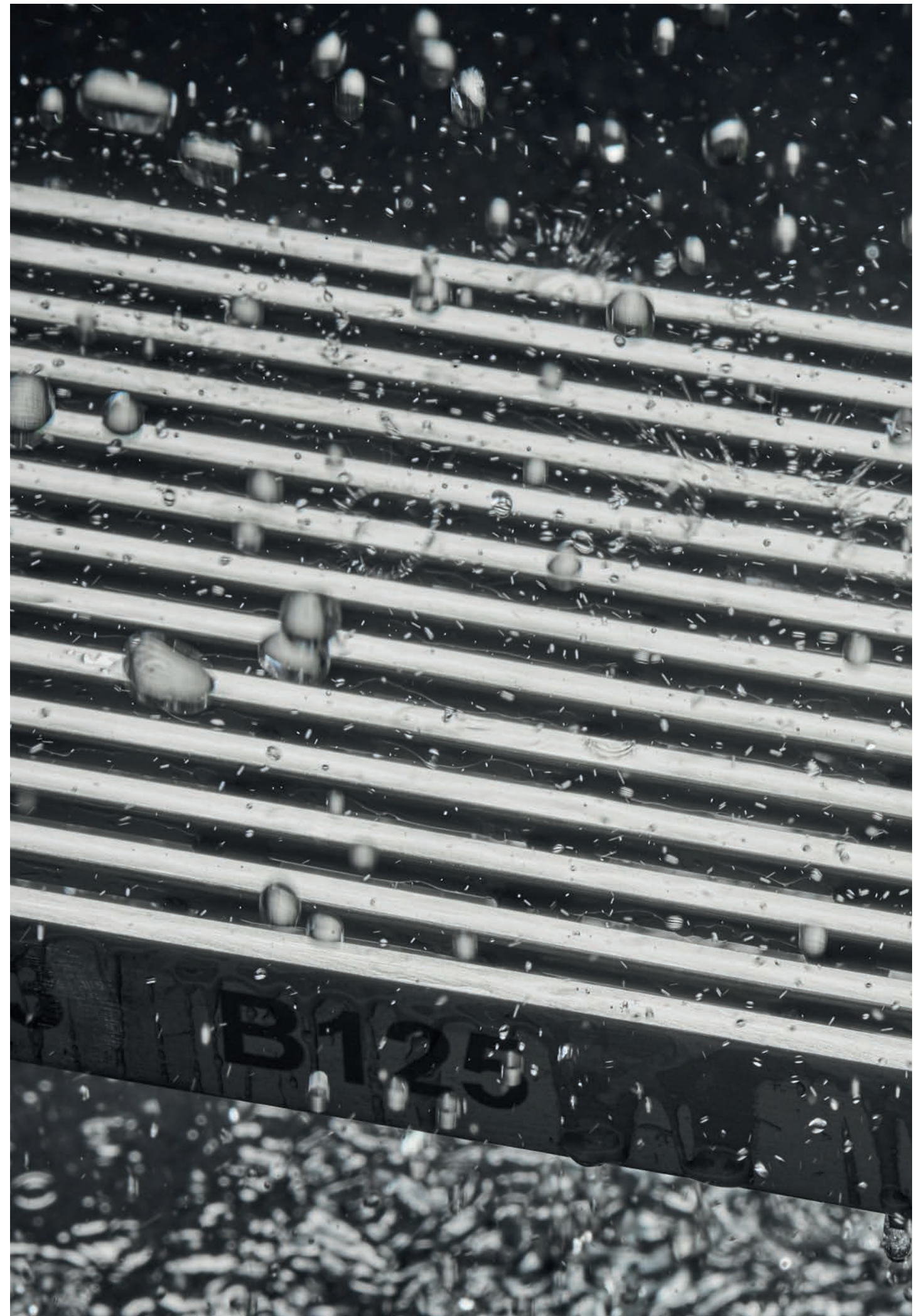
DESIGN RANGE

Oval Grip Design
HEEL GUARD
SW 10

Web grating
Slotted grating
Meshed grating
Perforated grating
Slotted profile grating

Slot attachment

Design grating CELTIC
Design grating LEAF
Design grating MASSIV 32

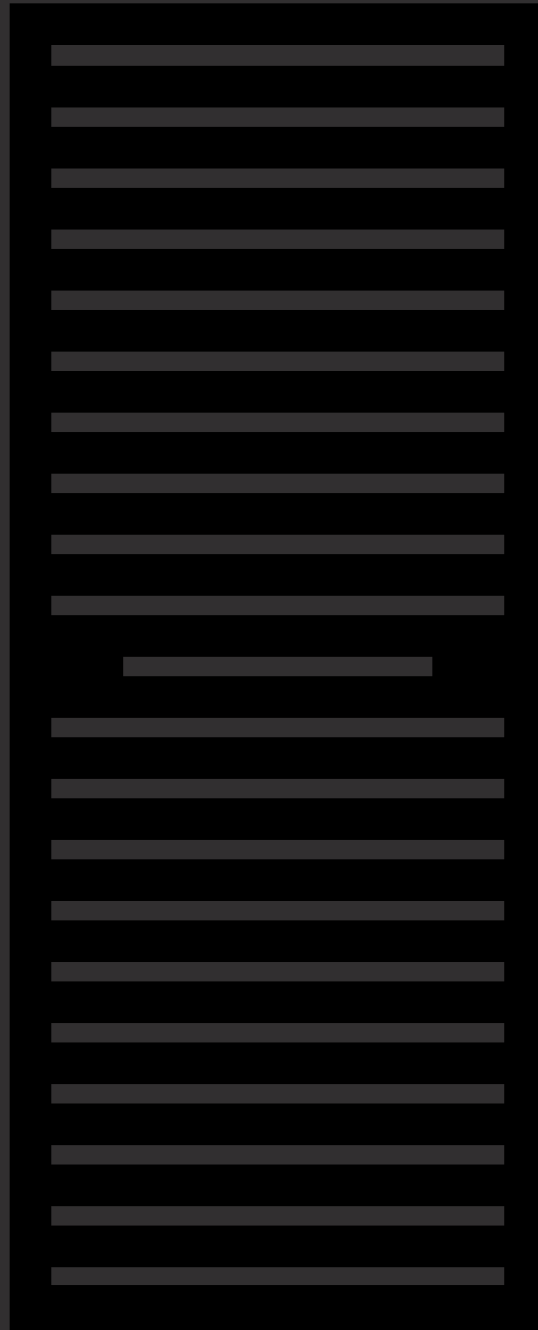


ANRIN in
Europe –
seamless
sales network
with strong
partners
near you.



● ANRIN in Germany | Austria | Belgium | Bulgaria | Czechia | Denmark | Finland | France | Greece | Iceland
Italy | Luxembourg | Netherlands | Norway | Poland | Portugal | Sweden | Switzerland | ANRIN International

ONE TRIBE



We are a community. We are united by the high quality and design of our products and the trust others place in us, the ANRIN brand.

ANRIN
LEADING



OVAL GRIP
DESIGN –
an ongoing
pattern



living
in rain



beauty of
the moment



in a different
light



aesthetic is
in the detail



in our element



enjoy
the rain



functional
aesthetics



ANRIN GmbH
Siemensstr. 1
59609 Anröchte
Germany

+49 (0) 29 47.97 81-0
www.anrin.com
info@anrin.com