

Quick Ship

Modular
Carpet Tile

2021

Carpets Inter®

Update Nov 14, 2020



**We will
RECYCLE OVER
1,000,000,000
discarded
PLASTIC BOTTLES
by 2025**

**SUSTAINABILITY
CAMPAIGN 2020**



To date EcoSoft® has recycled over 746 million PET bottles from polluting our planet... Be a part of this mission!

At Carpets Inter, we make high-quality modular carpet products to enhance people's lives. This commitment goes beyond providing a product that is safe, comfortable, and well designed. It extends to fostering humane, safe, and ethical workplace conditions in every facet of our multinational business, while promoting those same values – and a greater commitment to social awareness – wherever our brand is present. We base this promise on the underlying principle that the truest value of a company should be judged not only by its product or its profit, but ultimately, by its social benefit to people.



Quick Ship

This Quick Ship modular Carpet Tile program provides an instant flooring solution to enhance any interior environment with a quiet and functional aesthetic. The enclosed textural colors form part of our full collection portfolio and are immediately available from stock and ready to ship within three working days from order confirmation.

Please refer to individual 'Quick Ship' sample folders for full specification and installation configuration.

Please contact your local CI representative for Stock inventory or further information.

Nylon Quick Ship

Available with EcoSquare[®] backing unless otherwise stated.

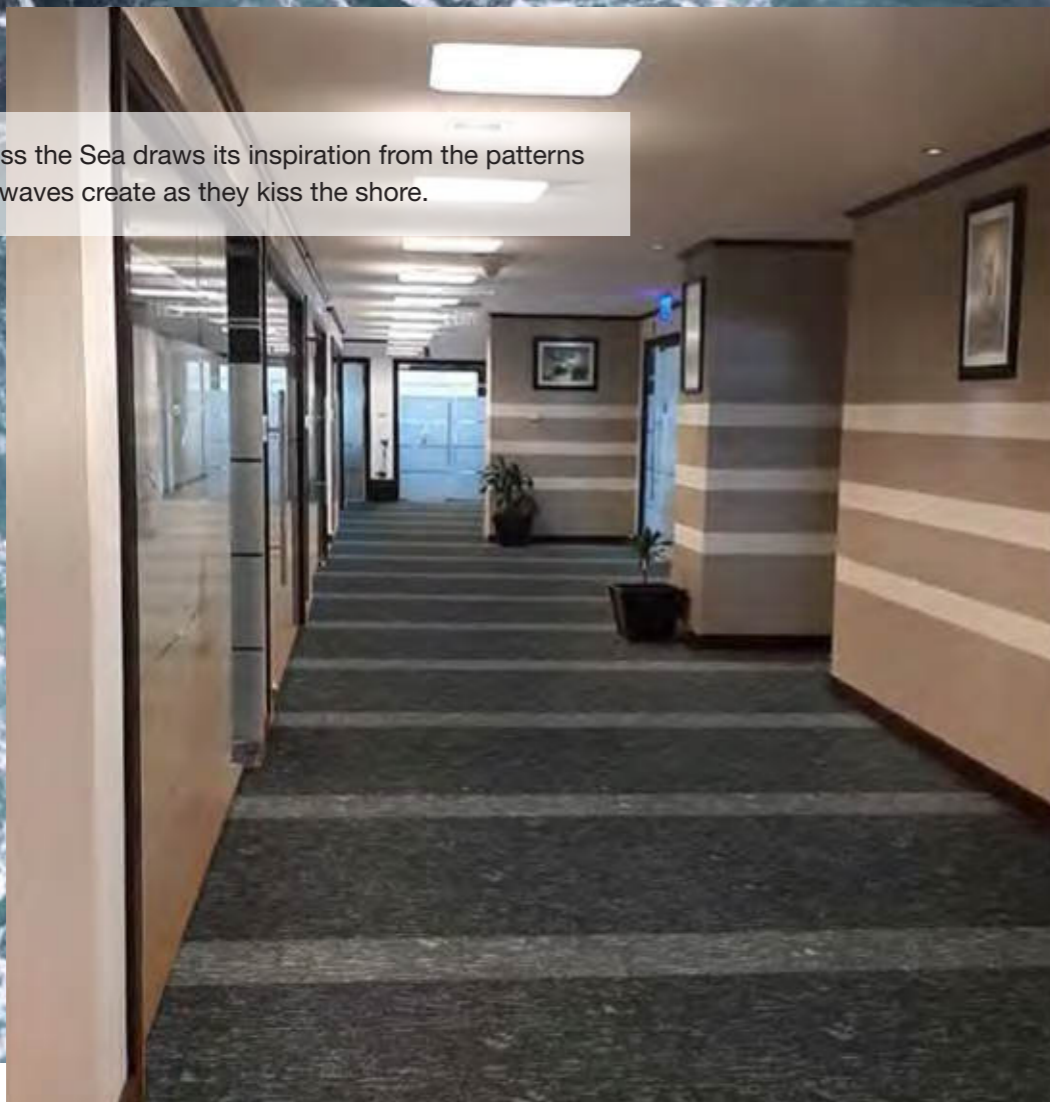
Blackout
NV01

Rain
NV 05

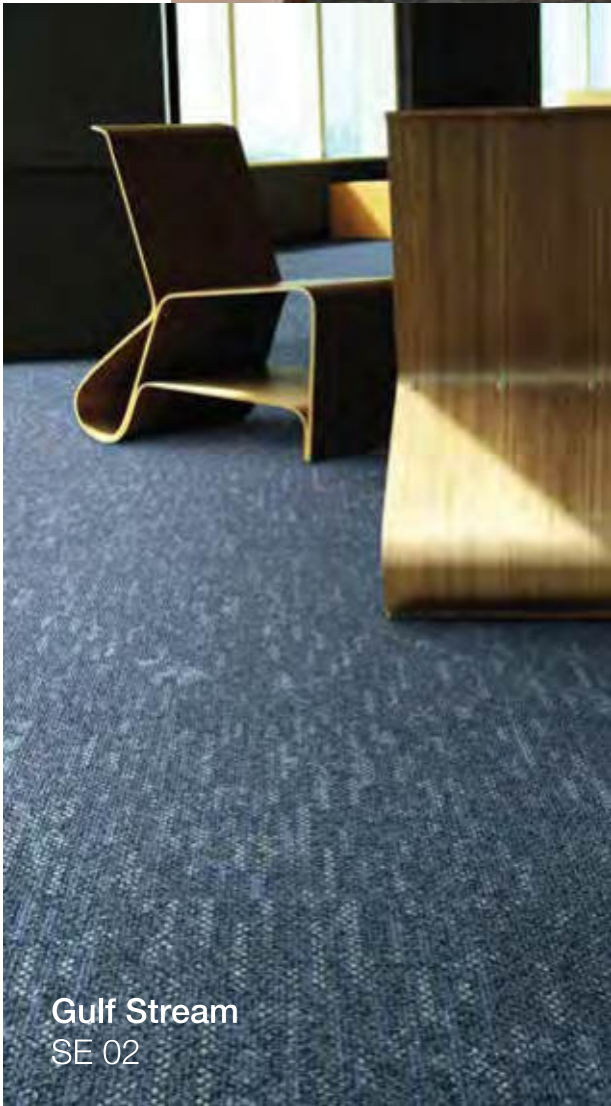
Vapour
NV 08

Carpets Inter[®]

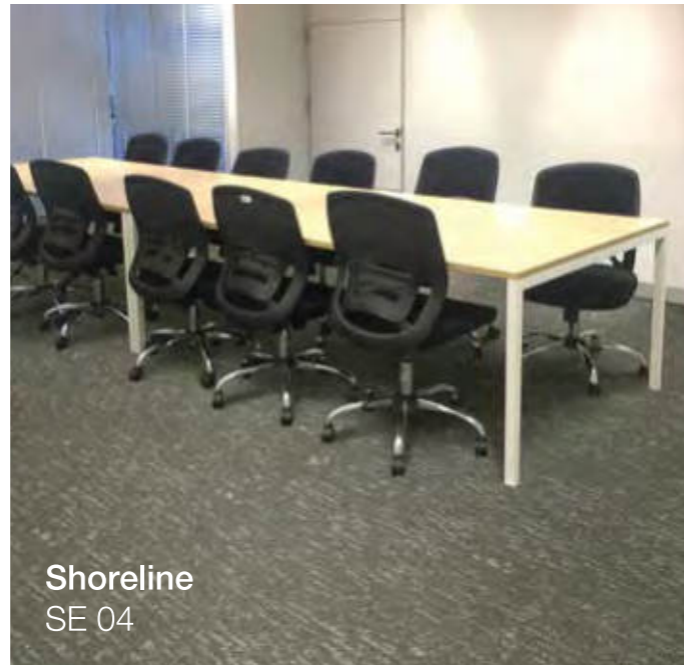
Across the Sea draws its inspiration from the patterns that waves create as they kiss the shore.



Black Pearl
SE 06



Ice Floe
SE 01
Grey Seal
SE 05



Shoreline
SE 04

Across the Sea

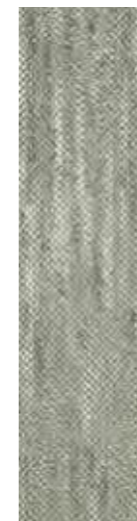
Breaking Waves



Ice Floe
SE 01



Gulf Stream
SE 02



Shoreline
SE 04



Grey Seal
SE 05



Black Pearl
SE 06

WAVES

BREAKING

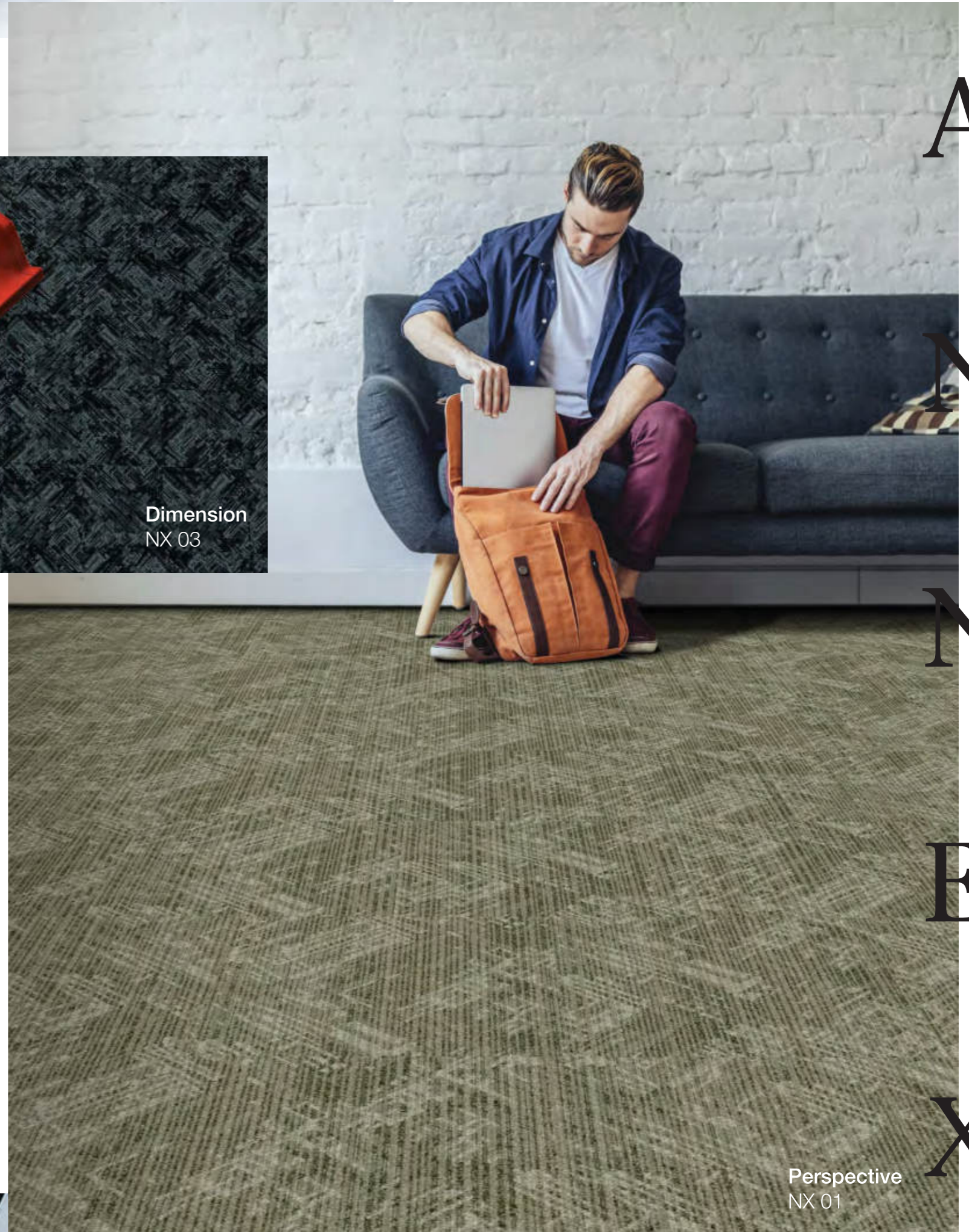
Annex

"Inspired by the interconnecting structures that make up the awe inspiring skyline of any modern city, Annex captures the reflectivity of the architectural forms and the cities bright lights which radiate across the urban landscape..."

With the soft interaction of tonal color and contrast of bright highlights, Annex invokes a very natural feeling within any interior space."



Dimension
NX 03



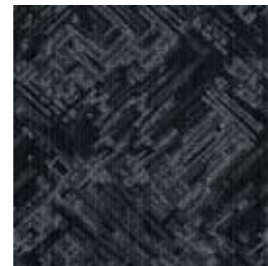
Perspective
NX 01



Perspective
NX 01



Elevation
NX 02



Dimension
NX 03



Facade
NX 04



Aspect
NX 05



Reflection
NX 06

A

N

N

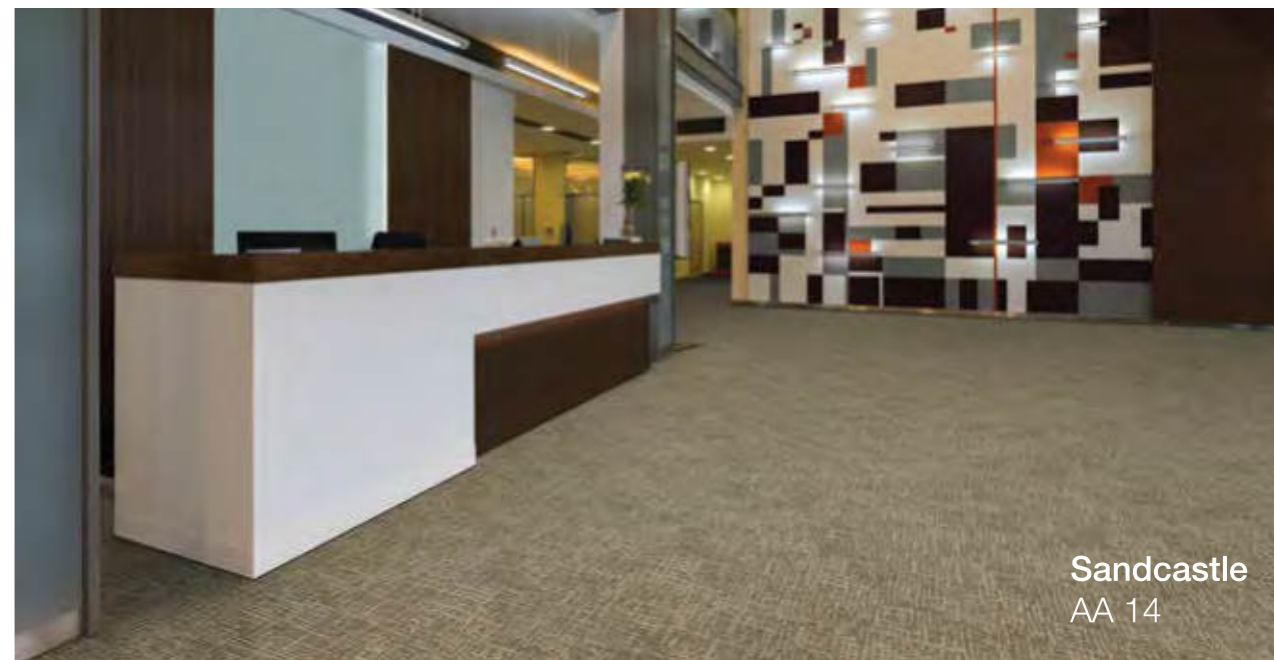
E

X

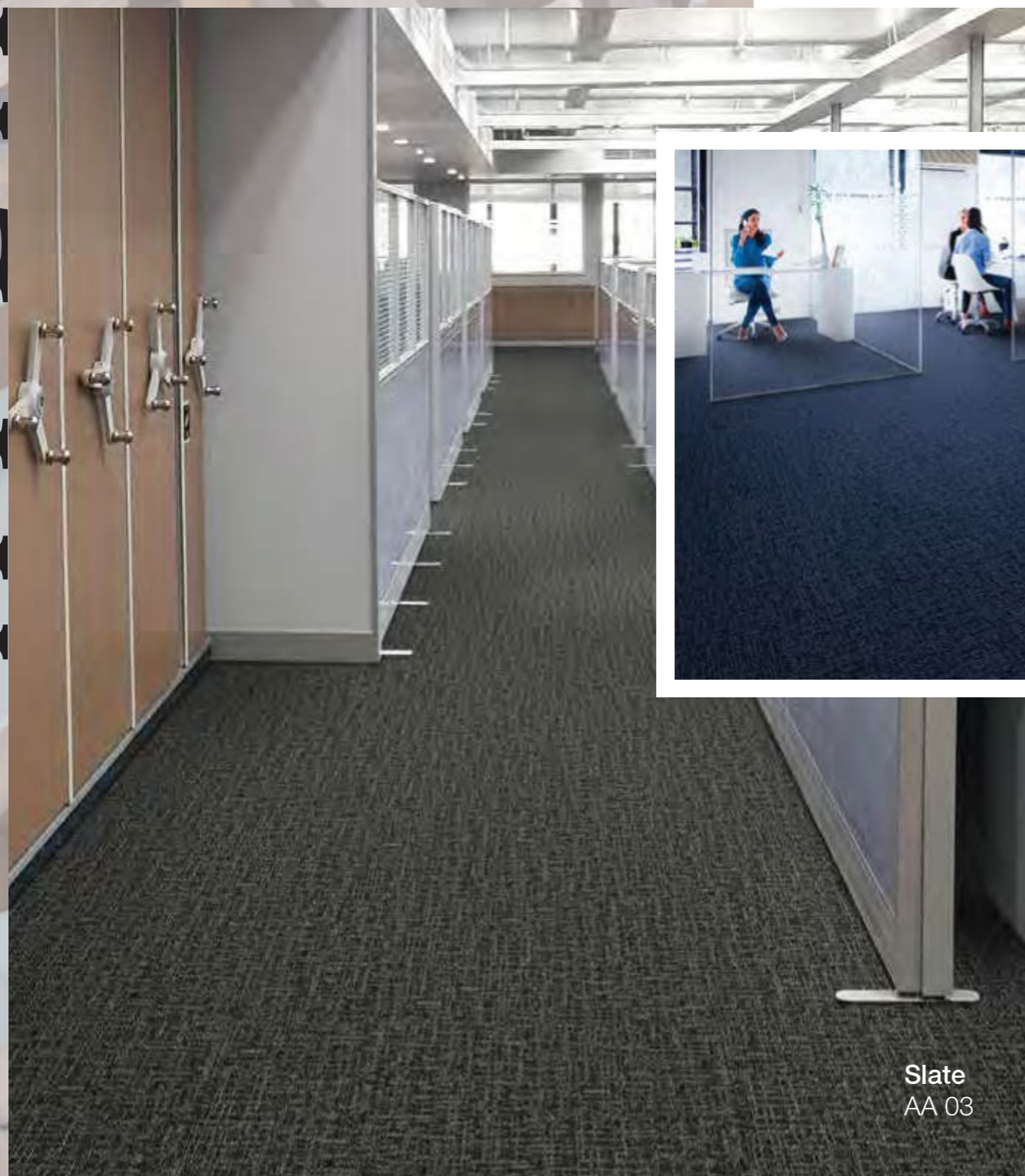
APEX II



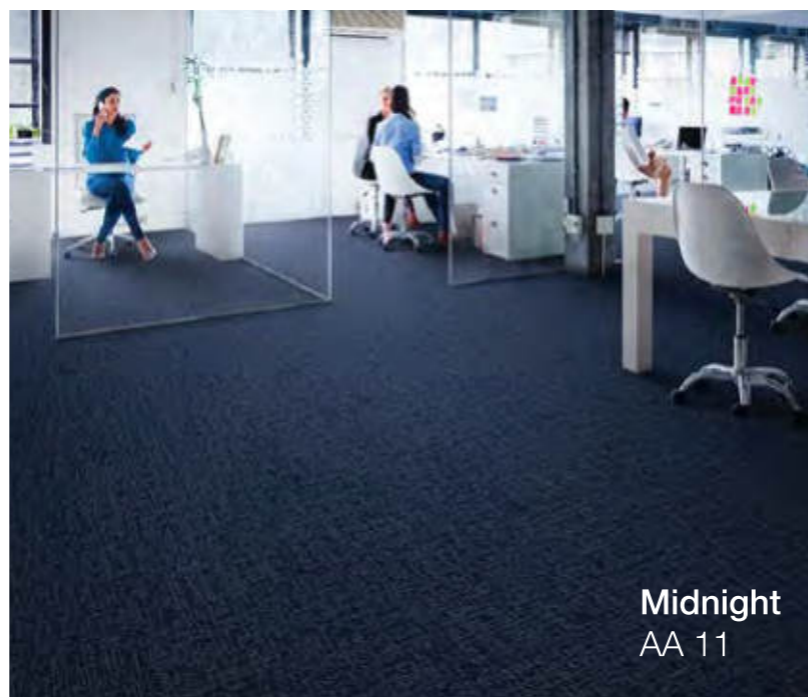
Soapstone
AA 02



Sandcastle
AA 14



Slate
AA 03



Midnight
AA 11

Apex II

In the best interior architecture all the elements cohere into a beautiful and functional space. The understated textural pattern of Apex II is created to precisely complement and enhance an interior environment with a quiet and functional aesthetic.



Soapstone
AA 02



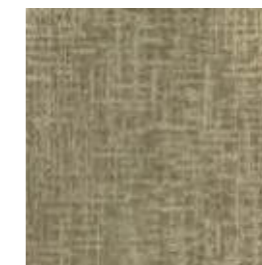
Slate
AA 03



Raven
AA 05



Midnight
AA 11



Sandcastle
AA 14



Dusk
AA 15

BENEATH THE SURFACE



Batur
SF 07

Vesuvius
SF 09

Lantoto
FL 11

Beneath the Surface

The collection provides a dynamic sense of flow and movement in very natural colour tones with the occasional emergence of hot lava, gem like formations within the cracks or the rebirth of nature as grass and moss begins to grow on the devastated landscape.



Merapi
SF 01

Kedu
FL 22



Merapi
SF01



Krakatoa
SF02



Kilauea
SF03



Krakatoa
SF 02

Pampas
FL20



Erebus
SF 05

Sapo
FL 10

Lantoto
FL 11

Kanto
FL 21



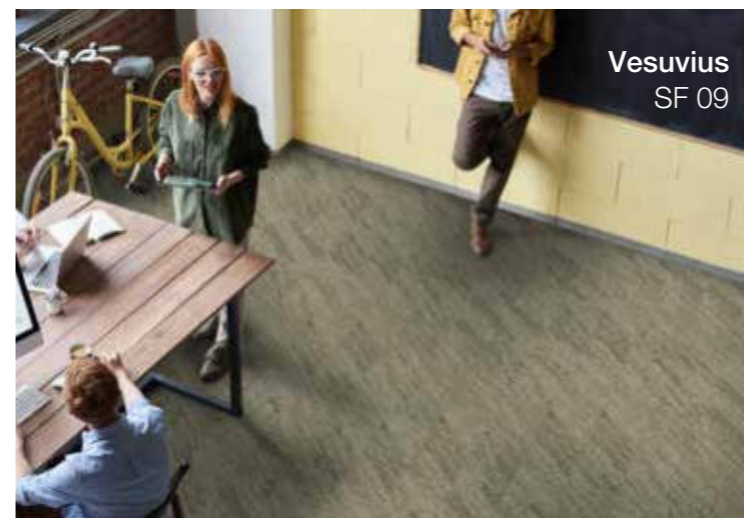
Obsidian
SF04



Erebus
SF05



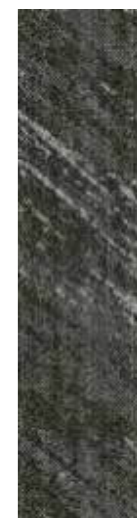
Basalt
SF06



Vesuvius
SF 09



Batur
SF07



Fuji
SF08



Vesuvius
SF09

Available from first quarter, 2021

B

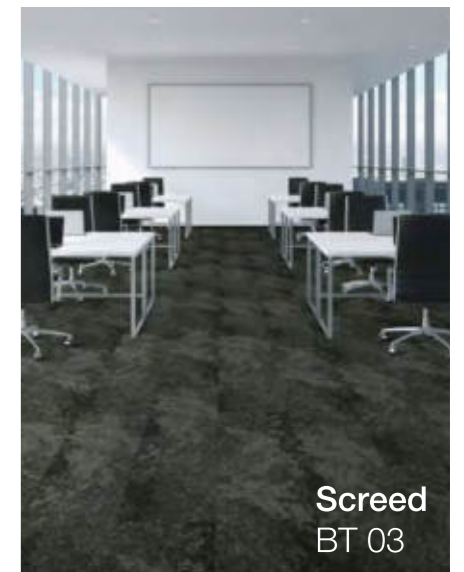
E



Mortar
BT 05

Beton

Béton is inspired by the natural organic surface of freshly laid concrete. With a subtle interaction of color tone, the collection provides an undulating texture for an aesthetically neutral backdrop to compliment with any interior.



Screed
BT 03



Pozzolana
BT 01



Strata
BT 02



Screed
BT 03



Portland
BT 04



Mortar
BT 05



Clay
BT 06

T

O

N

COLOR SYMPHONY



Color Symphony

Color Symphony brings you the option to compose the perfect mood for your interior space. Combining these accent colors with any of our design collections will give a palette of choice to compliment your interior and give it that personal touch to make it extraordinary.



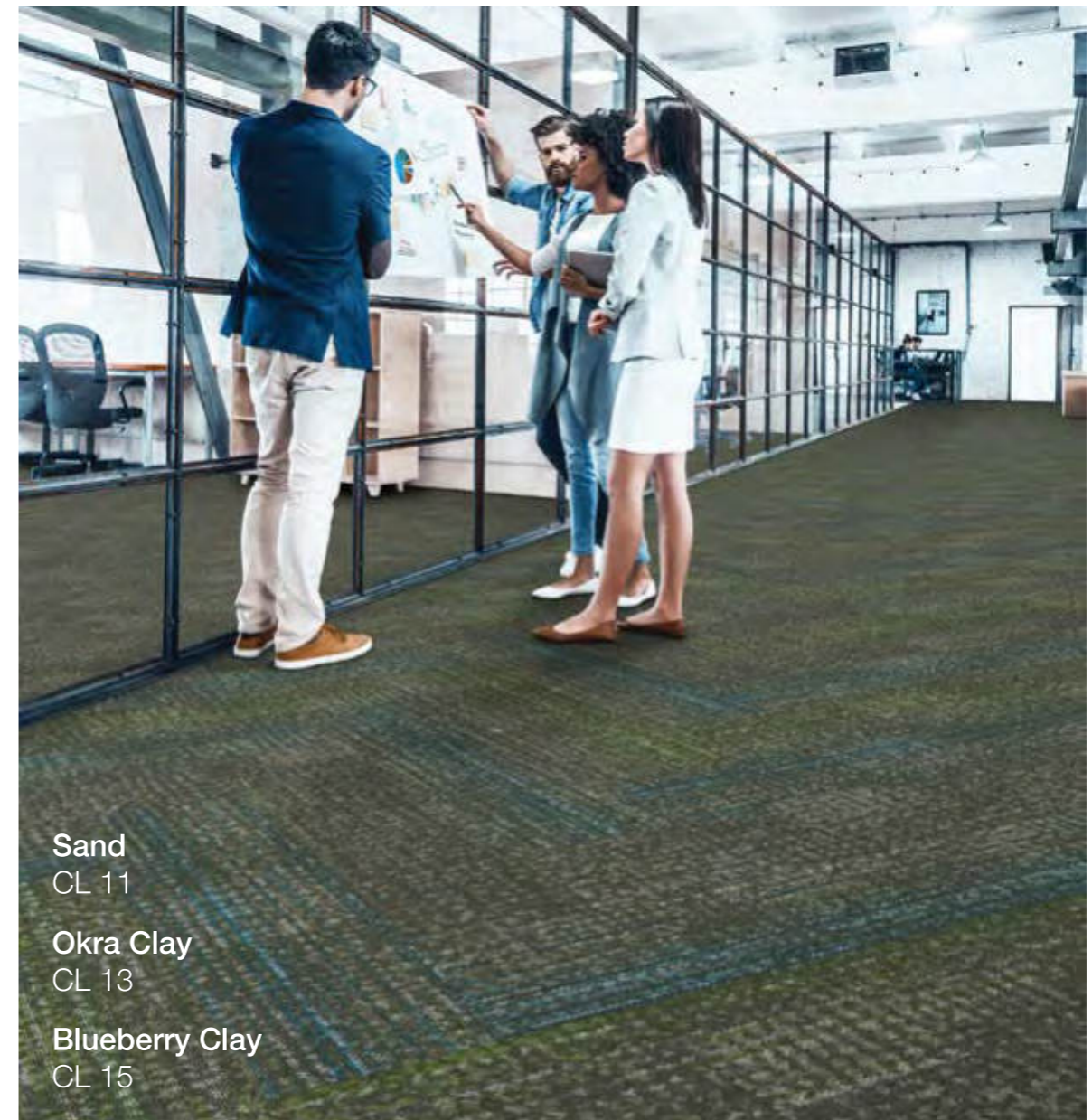
Pitch SM 01	Echo SM 02	Octave SM 03	Adagio SM 04
Treble SM 05	Major SM 06	Volume SM 07	Intermezzo SM 08
Key SM 09	Solo SM 10	Etude SM 11	Sonata SM 12
Sharp SM 13	Opera SM 14	Bar SM 15	

Visibility of Carpet Tile Seams in Solid or Near-Solid Tiles. Please refer Installation Method & Disclaimer.



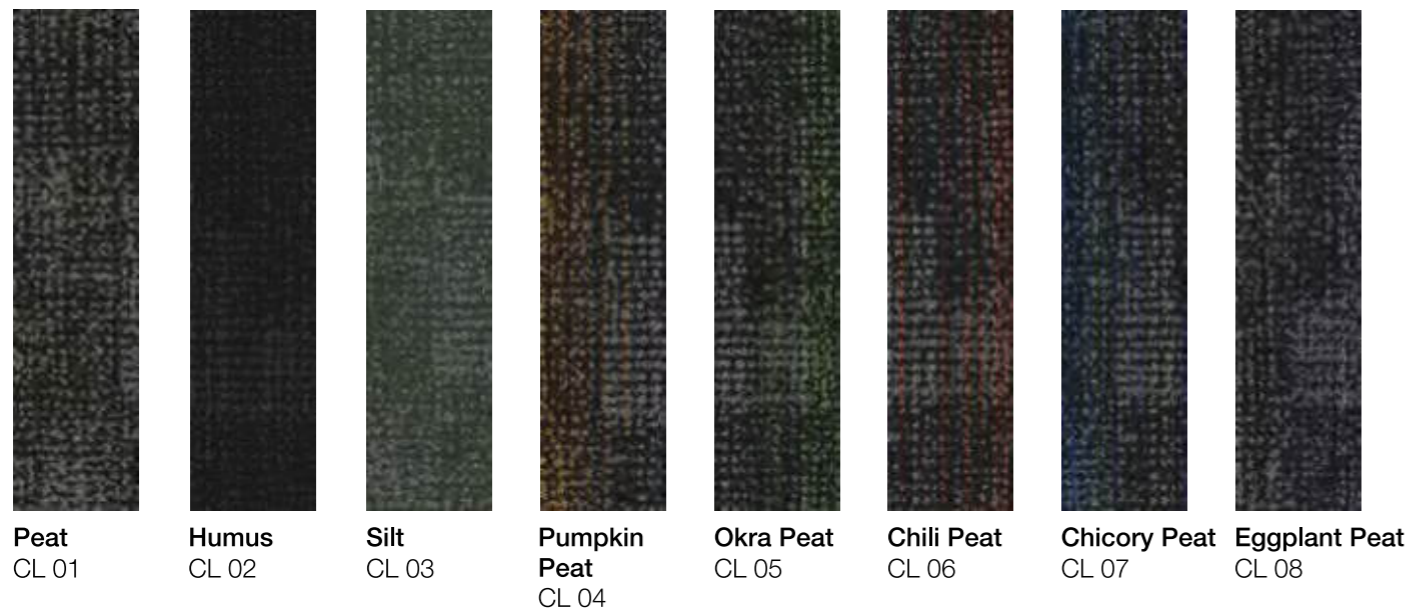
Croplands

A collection based on the foundation of earth tones, accented with the vibrancy of color to which nature effortlessly paints the landscape as crops come to life. Croplands allow modules to work independently or in harmony with each other to any interior space.

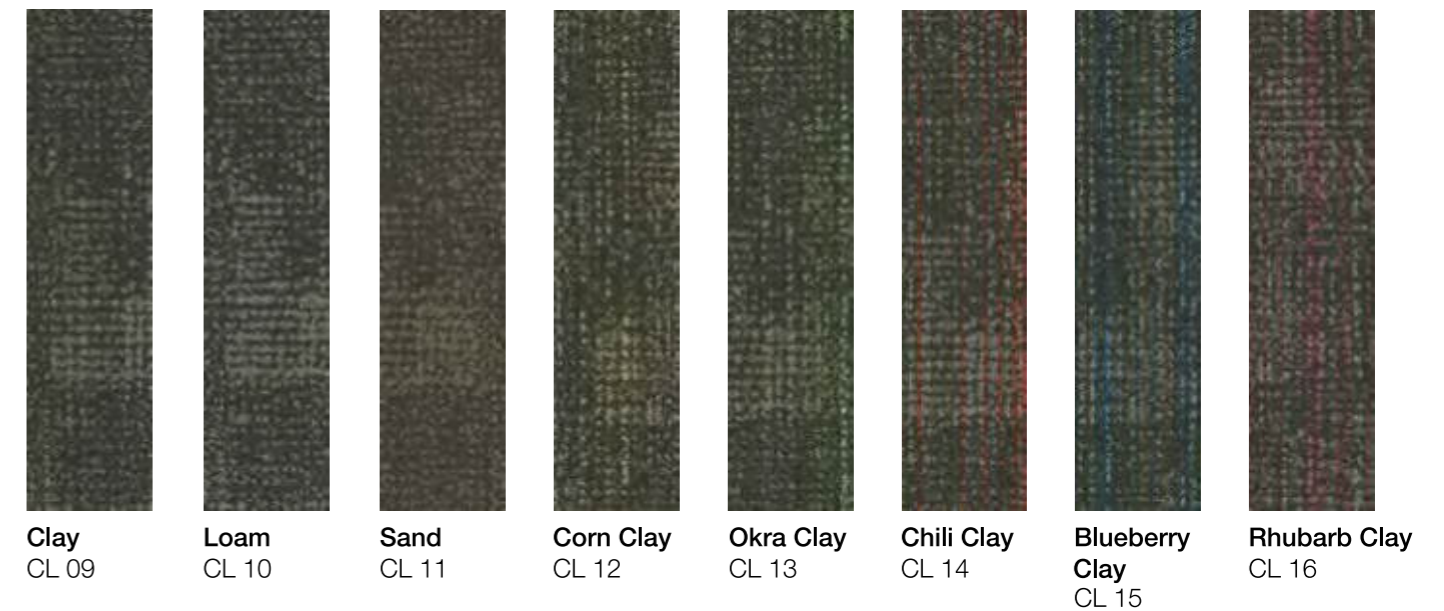


C
R
O
P
L
A
N
D
S

Roots



Organic



Flatlands

Named after the vast plains that cover much of the Earth, Flatlands monotone texture is ideal for creating an overall appearance on the floor. Flatlands provides a high performing 'fit for purpose' backdrop to functional spaces and can be used independently or as a matching coordinate with our textured patterns.



Harrat
FL 23



Akanda
FL 06



Omo
FL 04



Ruma
FL 09



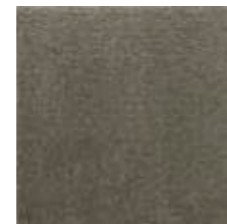
Arusha
FL 03



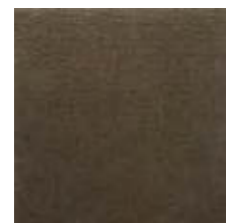
Gola
FL 01



Banco
FL 14



Taza
FL 08



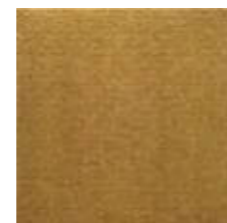
Campo
FL 07



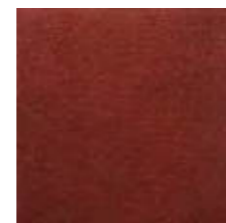
Karoo
FL 18



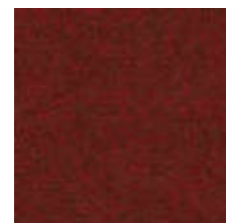
Mana
FL 17



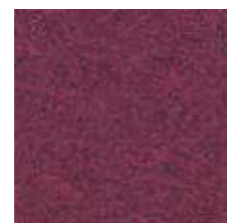
Lantoto
FL 11



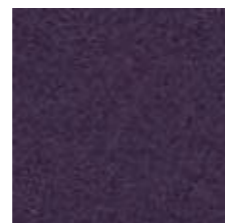
Fogo
FL 12



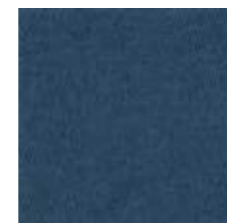
Kedu
FL 22



Kanto
FL 21



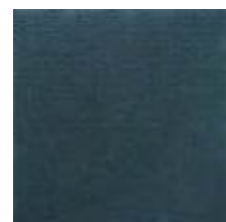
Caroni
FL 19



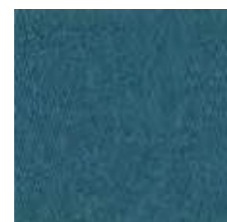
Matobo
FL 15



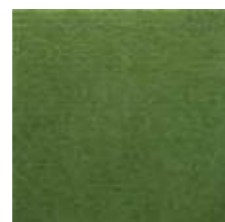
Pampas
FL 20



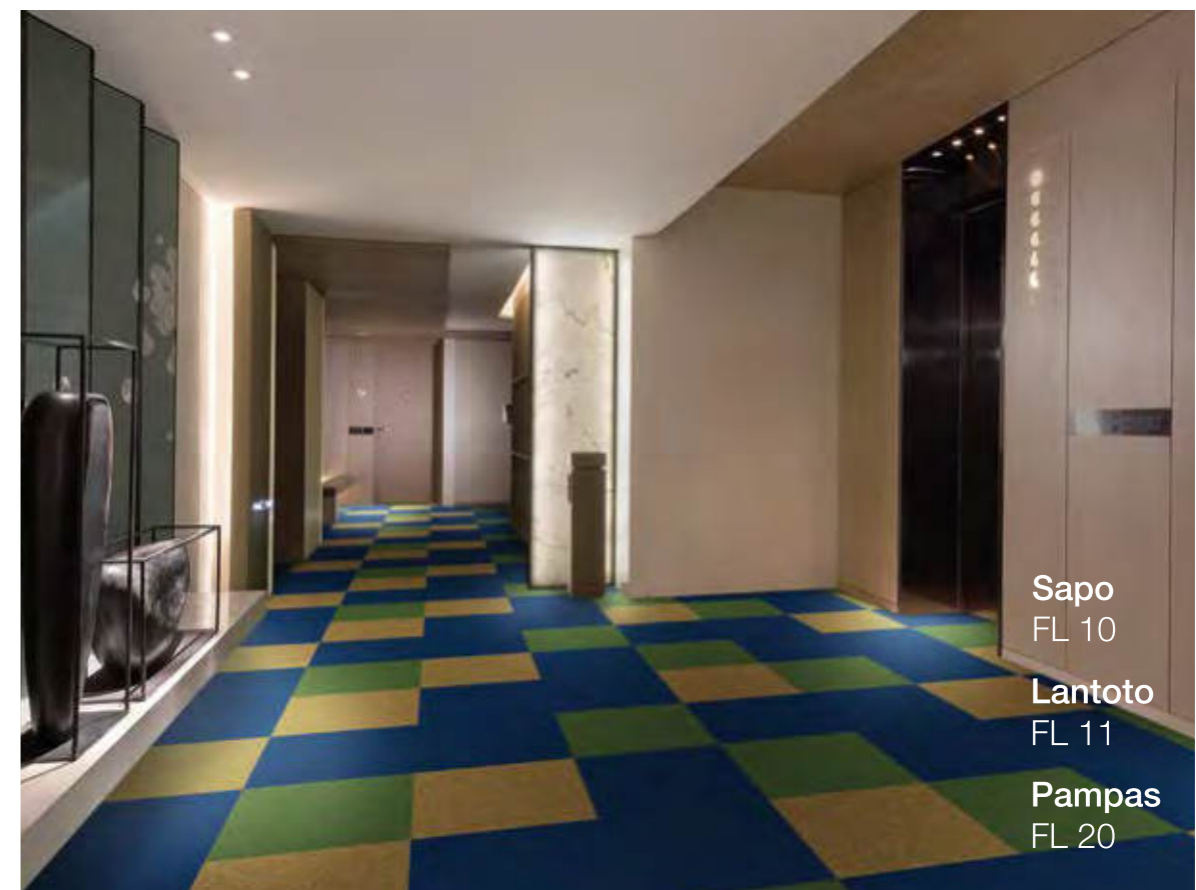
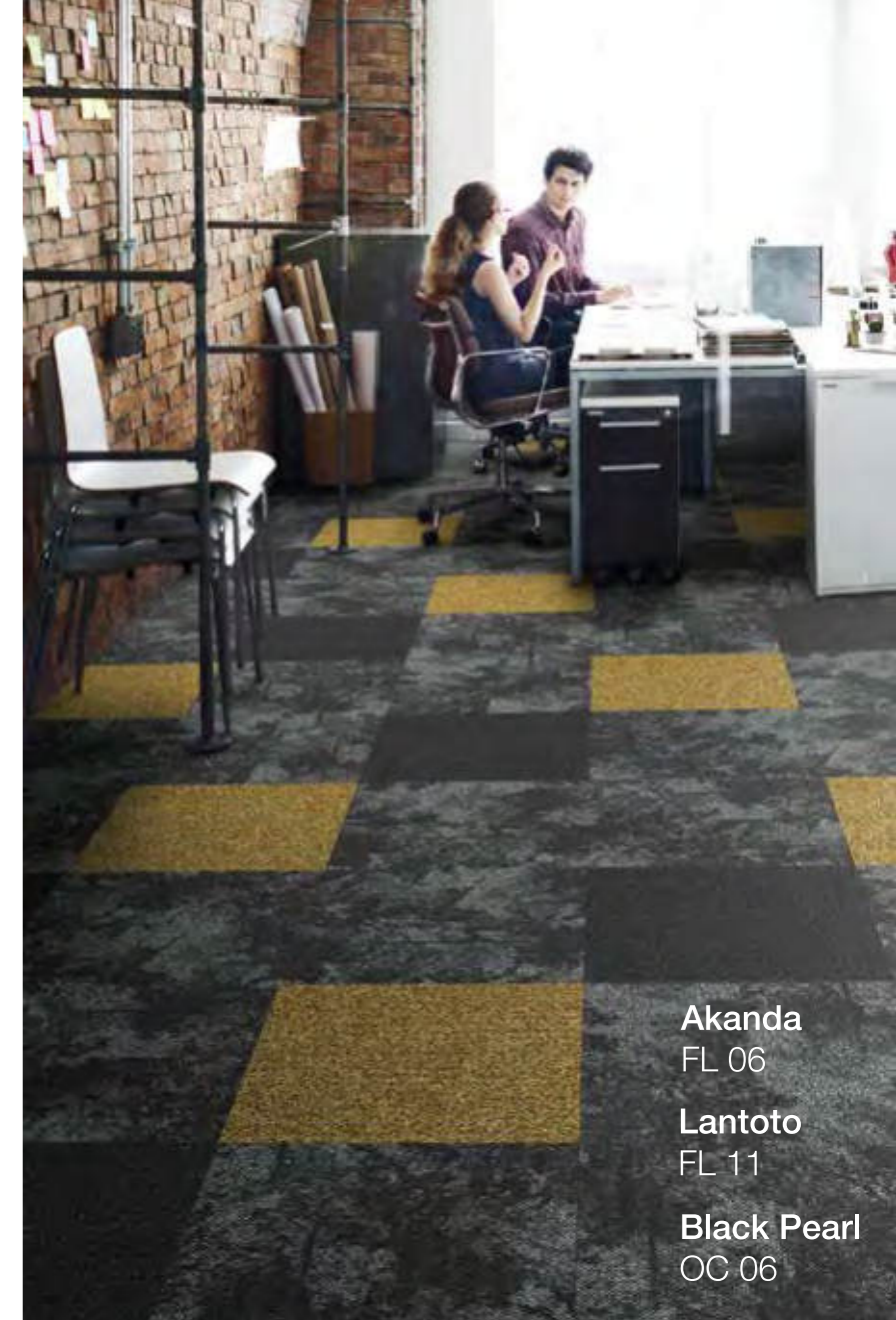
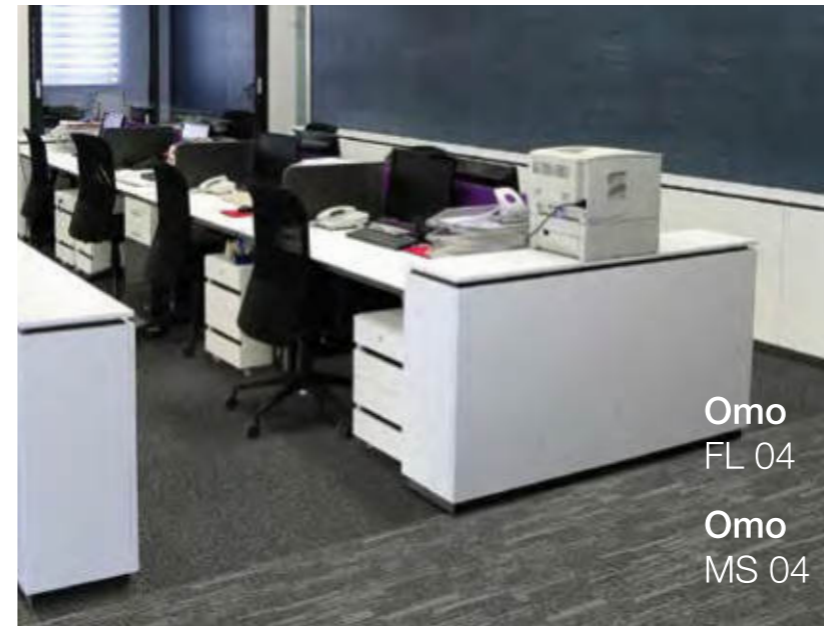
Mucusso
FL 02



Katavi
FL 16



Sapo
FL 10

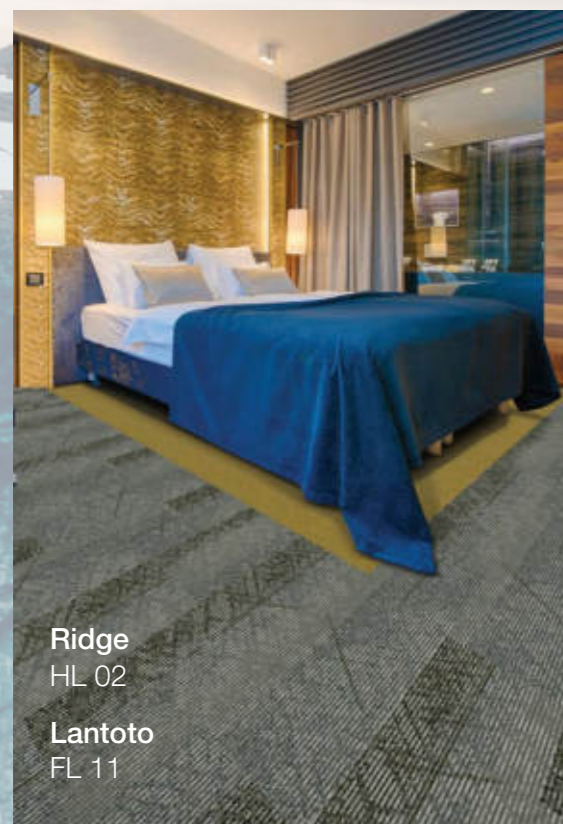


FLATLANDS

Visibility of Carpet Tile Seams in Solid or Near-Solid Tiles. Please refer Installation Method & Disclaimer.

PEAKS

Headlands is a modular carpet tile collection designed to invigorate the simple elegance of Flatlands to produce a beautiful partnership which invites a sense of play and endless possibilities.



Ridge
HL 02

Lantoto
FL 11

Rocky
HL 01



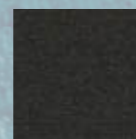
Ridge
HL 02



Outcrop
HL 03



Peninsula
HL 04



Akanda
FL 06

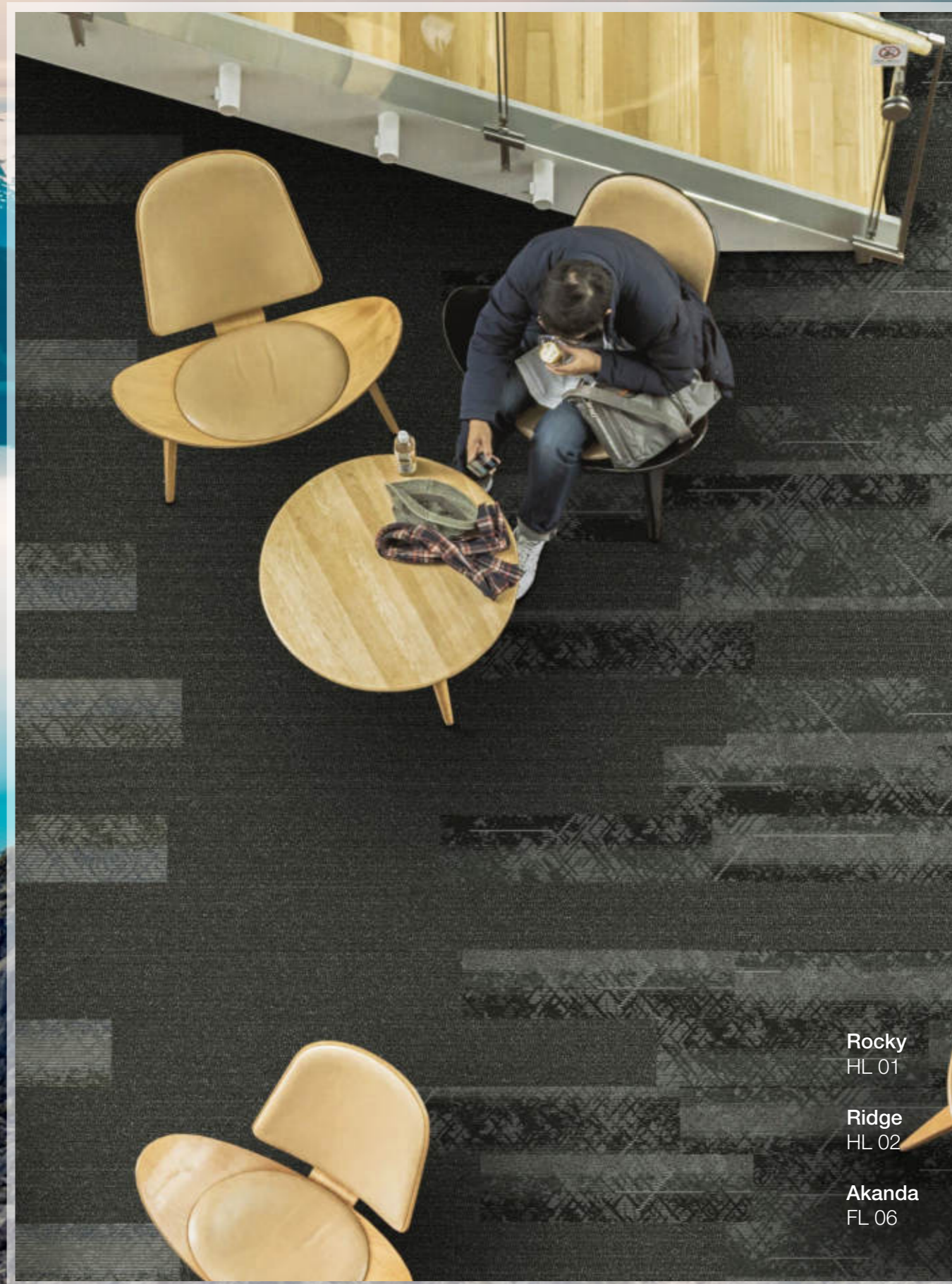


Banco
FL 14



Caroni
FL 19

Where colors combine as peaks
melt into skyline



Rocky
HL 01

Ridge
HL 02

Akanda
FL 06



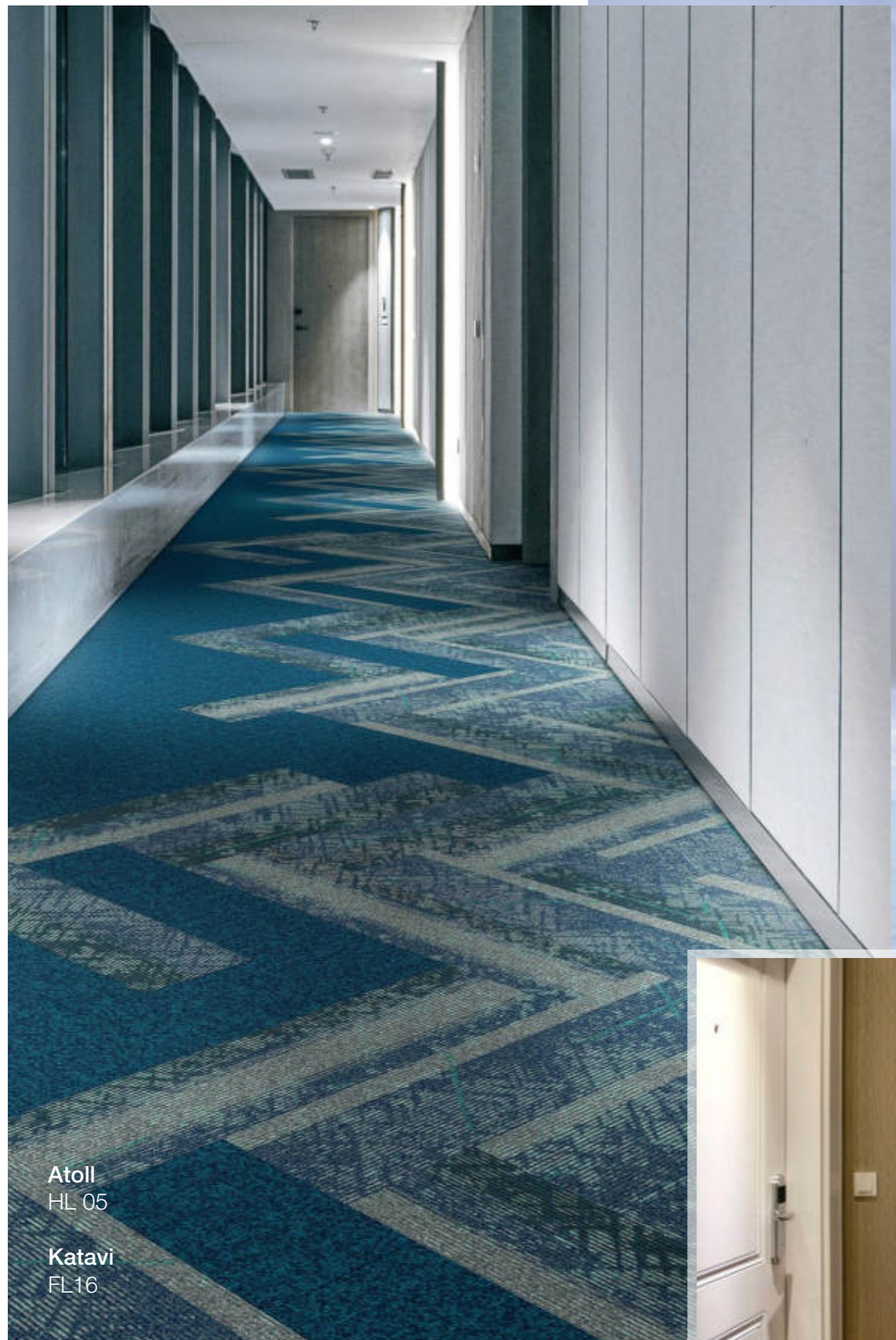
Outcrop
HL 03

Peninsula
HL 04

Banco
FL 14

Caroni
FL 19

HEADLANDS



Atoll
HL 05

Katavi
FL16

Rocky shorelines
reflect colors of lands
fusion with water

EDGE

Headlands is a modular carpet tile collection designed to invigorate the simple elegance of Flatlands to produce a beautiful partnership which invites a sense of play and endless possibilities.



Gulf
HL 07

Gola
FL 01

Atoll
HL05



Fjord
HL06



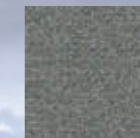
Gulf
HL07



Cove
HL08



Matobo
FL15



Gola
FL01



Katavi
FL16



Cove
HL 08

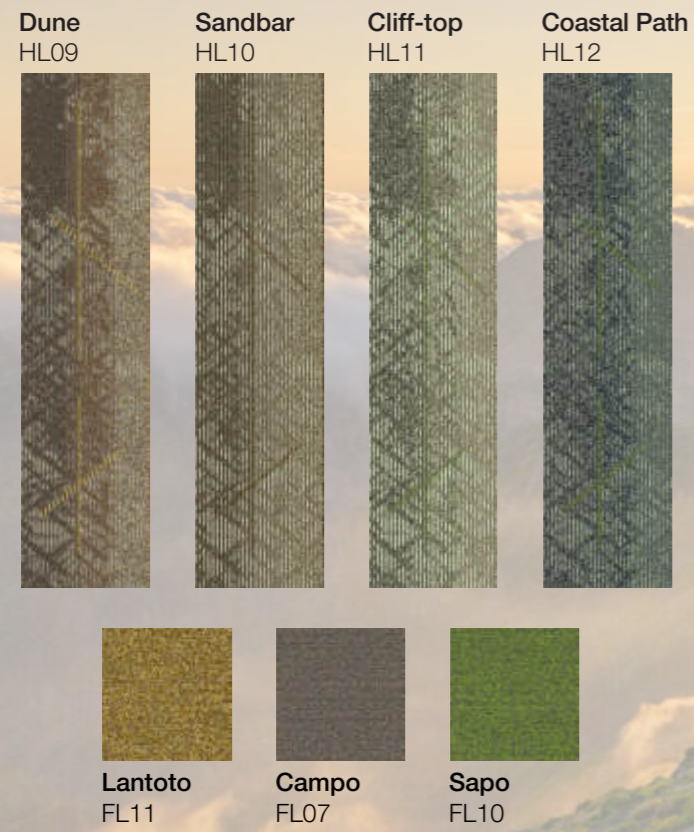
Fjord
HL 06

Matobo
FL15

Katavi
FL16

PATHWAYS

Headlands is a modular carpet tile collection designed to invigorate the simple elegance of Flatlands to produce a beautiful partnership which invites a sense of play and endless possibilities.



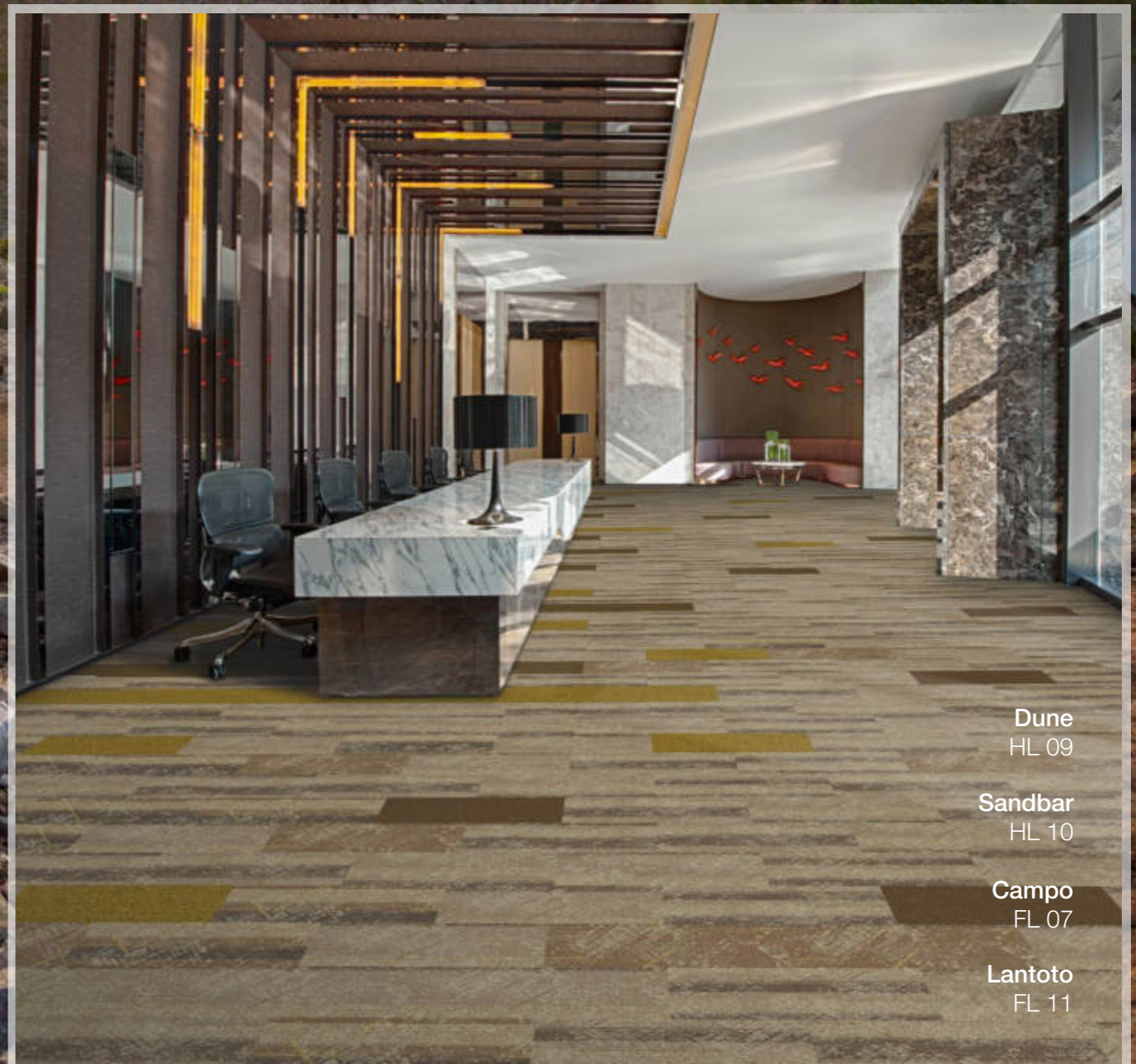
A spectrum of color viewed along coastal pathways



Coastal Path
HL 12
Sapo
FL10



Rocky
HL 01
Cliff-top
HL 11
Omo
FL 04
Ruma
FL 09



Dune
HL 09
Sandbar
HL 10
Campo
FL 07
Lantoto
FL 11

M

E

S

A

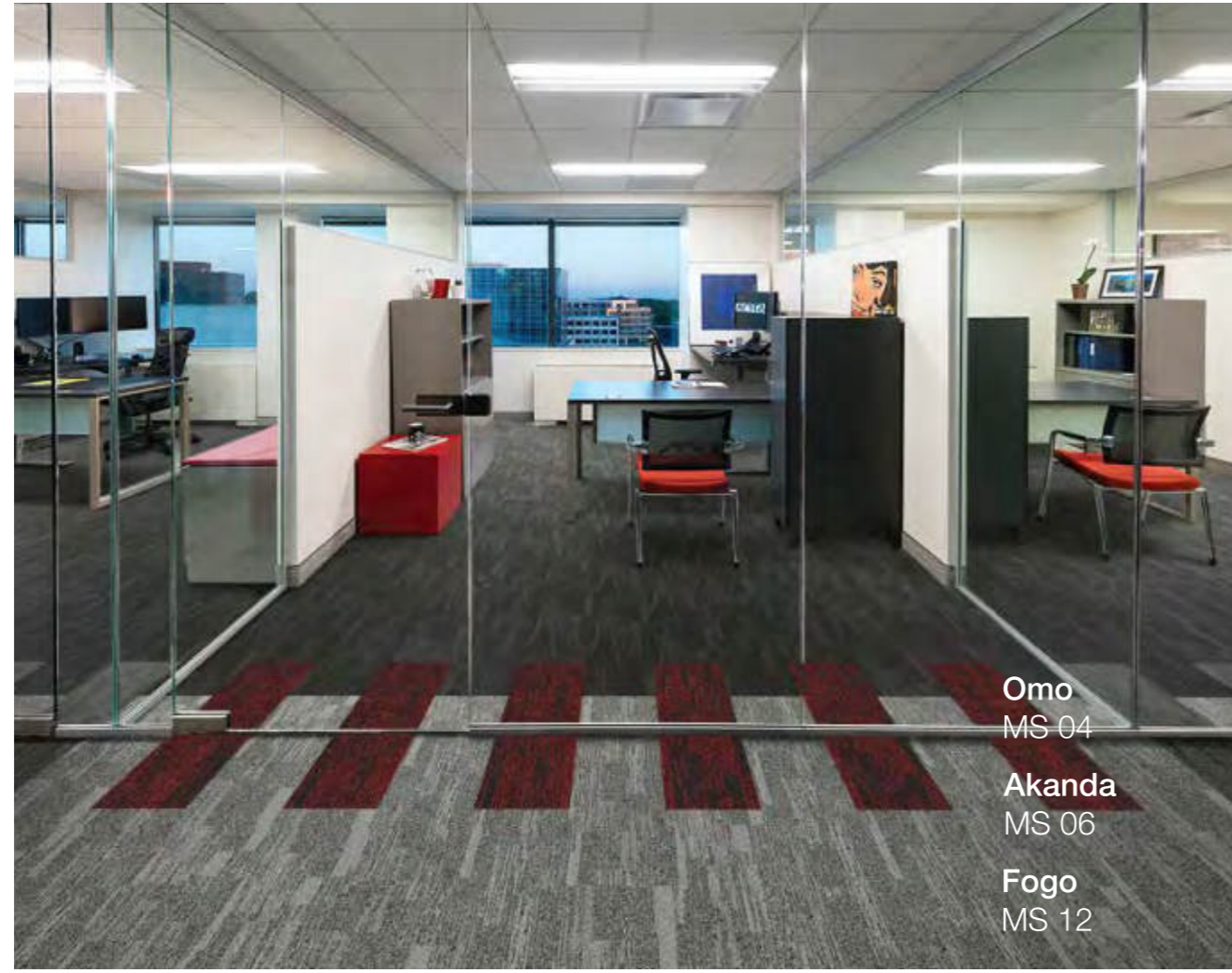


Mesa

Breaking Ground

Mesa, inspired by sedimentary rock strata, is an organic texture suitable for most commercial interiors. Mesa can be used independently or as coordinates with Flatlands to landscape any floor.

- Gola MS 01
- Omo MS 04
- Lona MS 05
- Campo MS 07
- Taza MS 08



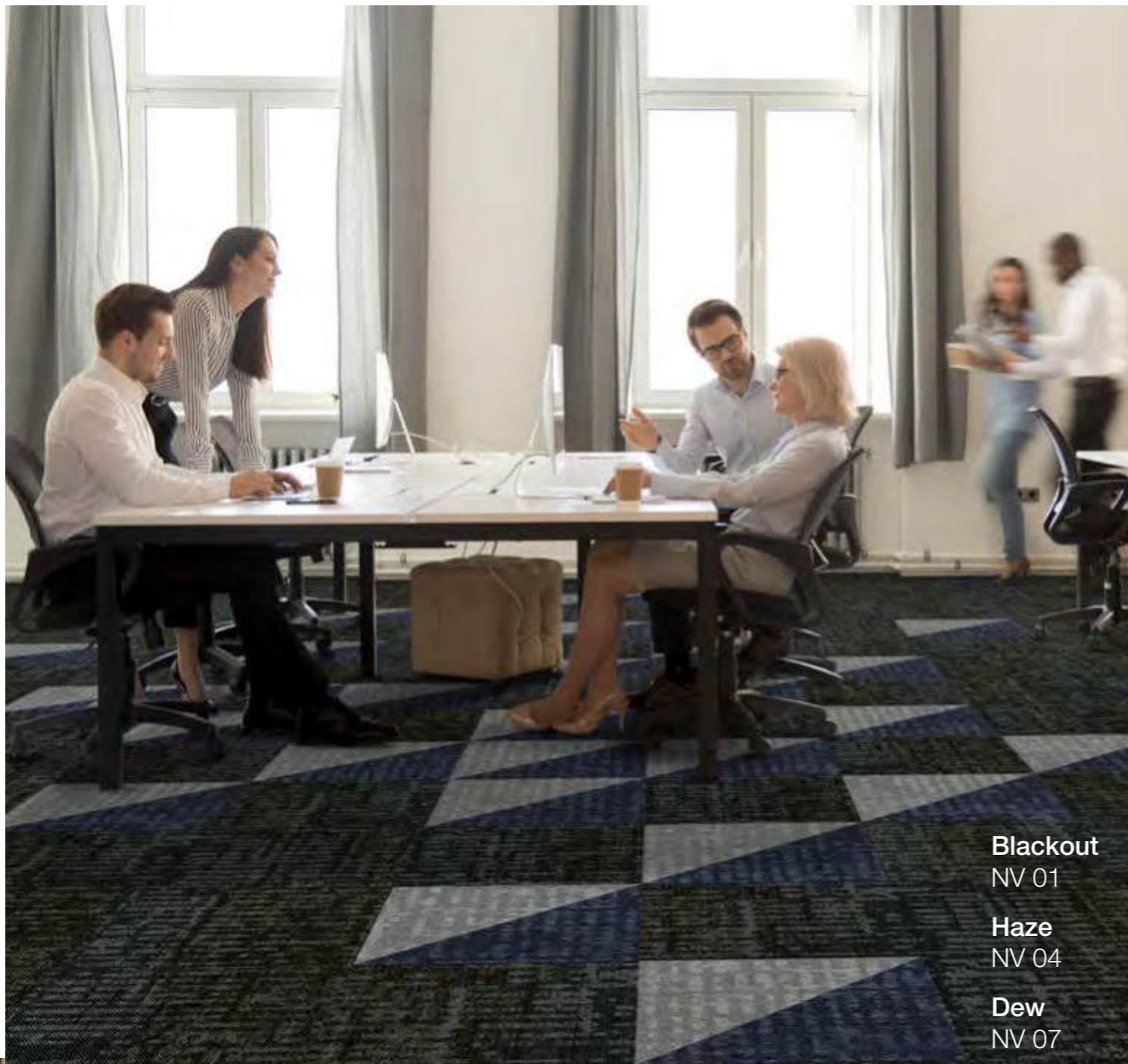
- Omo MS 04
- Akanda MS 06
- Fogo MS 12

* The plank tile size 25x100 cm. is made to order. For further information CI sales representative will be pleased to provide.





Rain
NV 05
Sapo
FL 10
Lantoto
FL 11



Blackout
NV 01
Haze
NV 04
Dew
NV 07

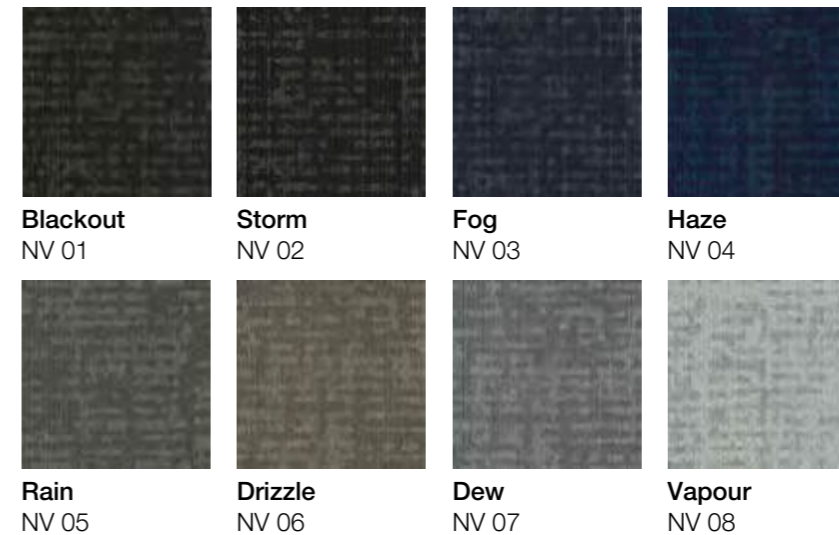


Haze
NV 04
Vapour
NV 08

Névoa

Névoa evokes a feeling of quiet contemplation, the calm and tranquility brought into contrast when the mist clears. A sense of optimism where clarity begins to come back into view and the freshness as your vision starts to sharpen its focus.

This collection gives a neutral backdrop of calm serenity to any interior with a subtle tonal pattern gradually revealing itself.

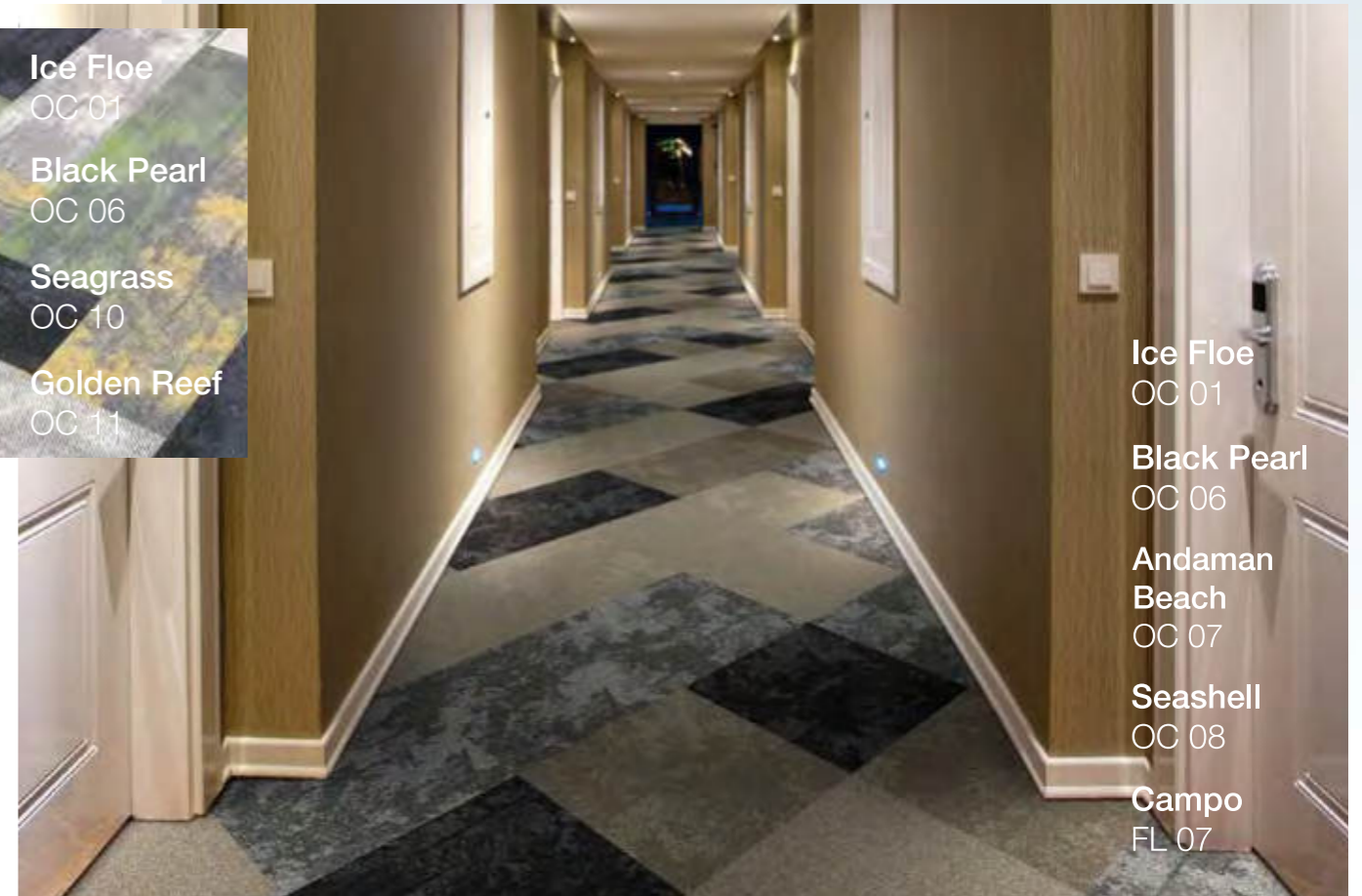
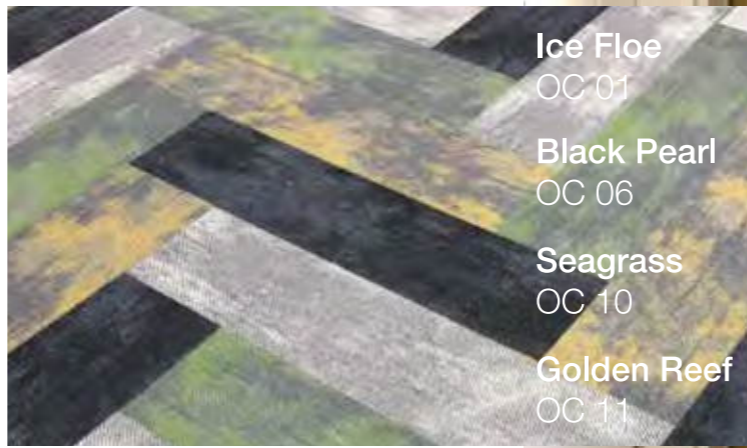
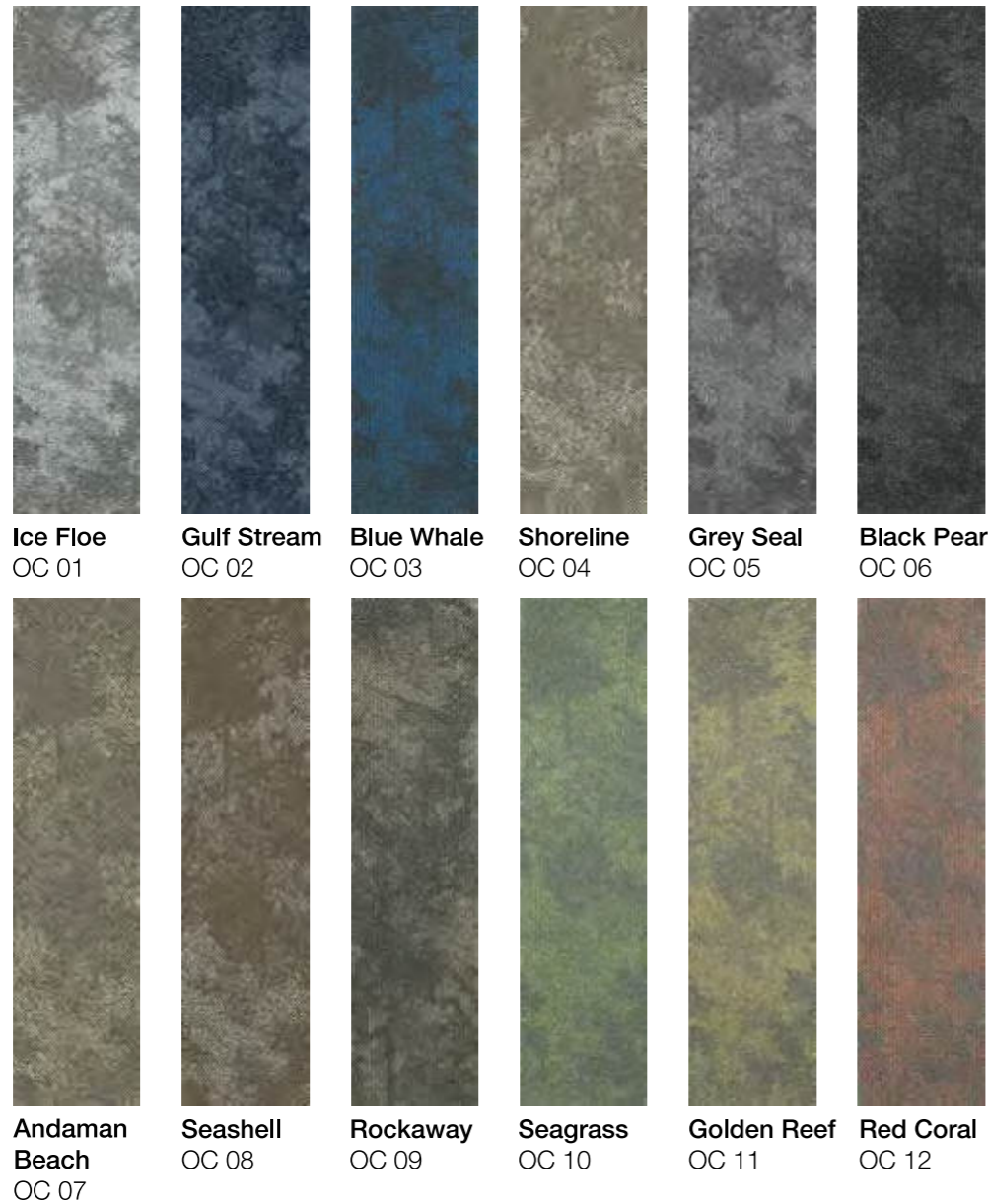


Available from third quarter, 2020

Over The Ocean

Breaking Waves

Over the Ocean was inspired by the movement of currents and reflected light on the surface of the water as seen from the air.



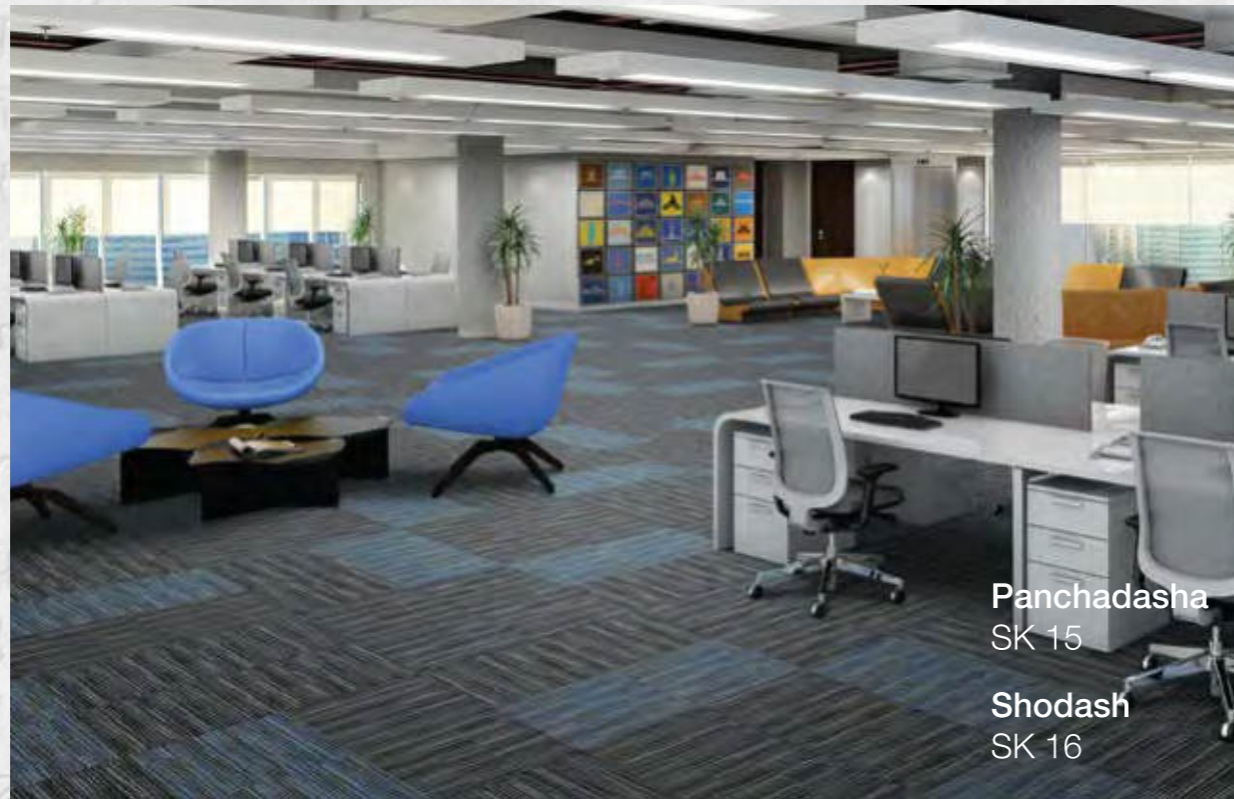
This installation featuring Over the Ocean marries the organic pattern with the geometry of the planks in multiple colors to create a dynamic graphic floor suitable for large open areas.



SANSKRIT PLUS II



Chaturdasha
SK 14



Panchadasha
SK 15
Shodash
SK 16

Sanskrit Plus II

Sanskrit is a classical language that has a prominent place in India's rich cultural narrative including religious, literary, scientific and technical works. Sanskrit Plus II features classic styling, superior performance, and great value which makes it an ideal choice for a wide range of interior applications. .



Ashta
SK 08



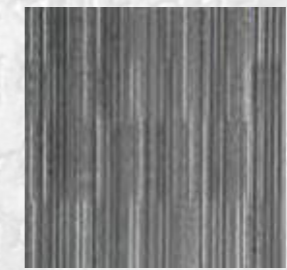
Dasa
SK 10



Chaturdasha
SK 14

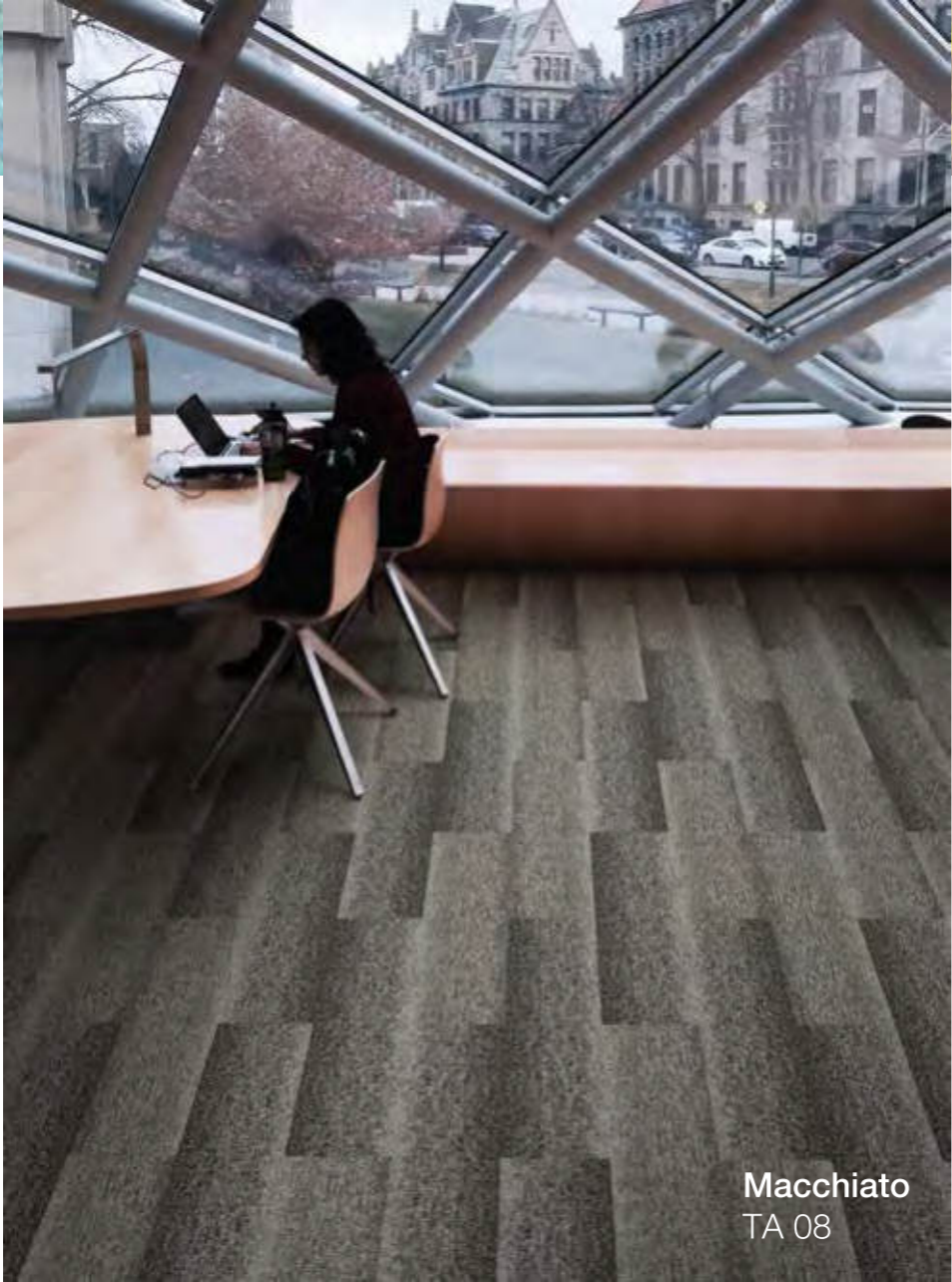


Panchadasha
SK 15



Shodash
SK 16

TAVOLA



Tavola

"As children we explore our world through play and when we play with pencils and crayons we begin to discover line and color and how they interact so we can draw images and pictures. And before we create coherent images we start with scribbling random lines on any surface available."

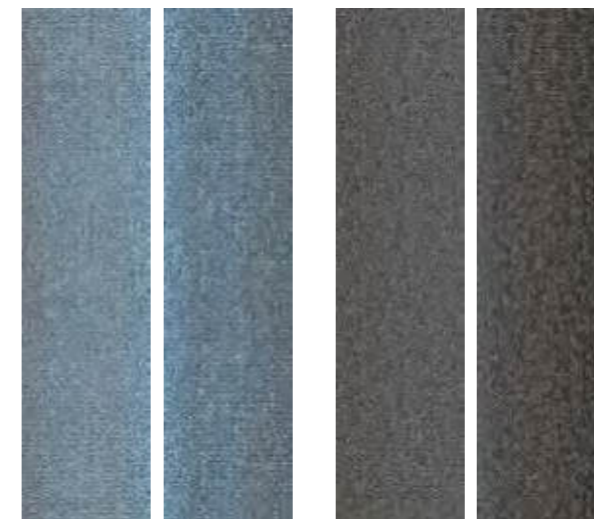
"Tavola was inspired by the memory of scribbling on paper and seeing the paper create an unexpected pattern. Tavola is the embodiment of this early memory."



Blu
TA 05

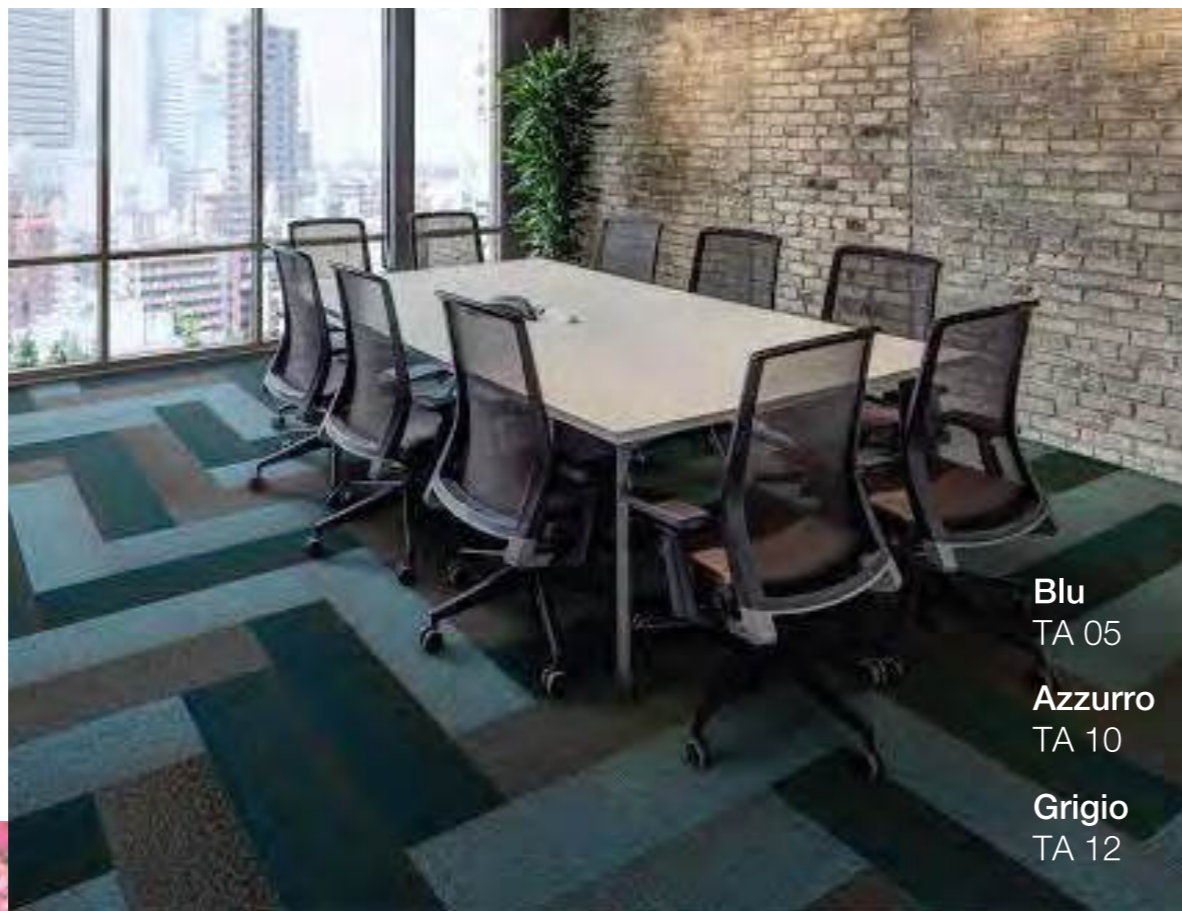
Nero
TA 06

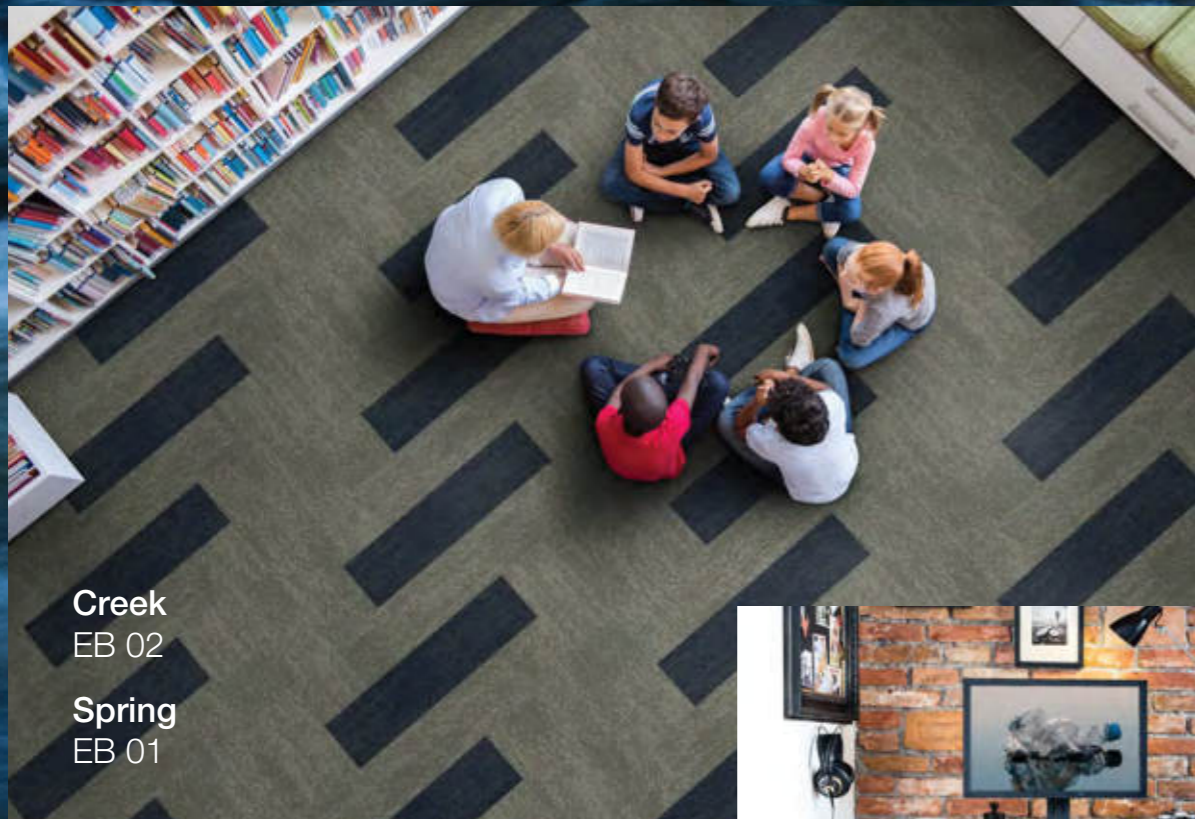
Macchiato
TA 08



Azzurro
TA 10

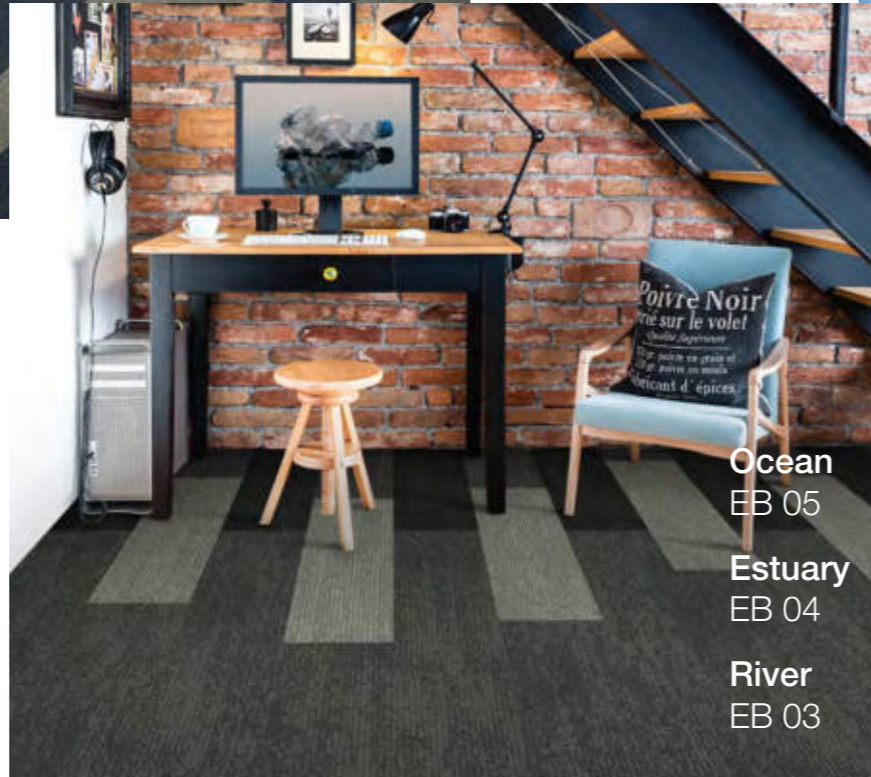
Grigio
TA 12





Creek
EB 02

Spring
EB 01



Ocean
EB 05

Estuary
EB 04

River
EB 03

Ebb

Upstream Collection

Upstream has been engineered to highlight how for more than a decade, Carpets Inter has diverted plastic waste from becoming part of this essential movement of water around our planet.



Spring
EB 01



Creek
EB 02



River
EB 03



Estuary
EB 04



Ocean
EB 05

EcoSoft®

Environmentally Friendly Cushion Backing
Recycled and Recyclable Materials



Spring
EB 01

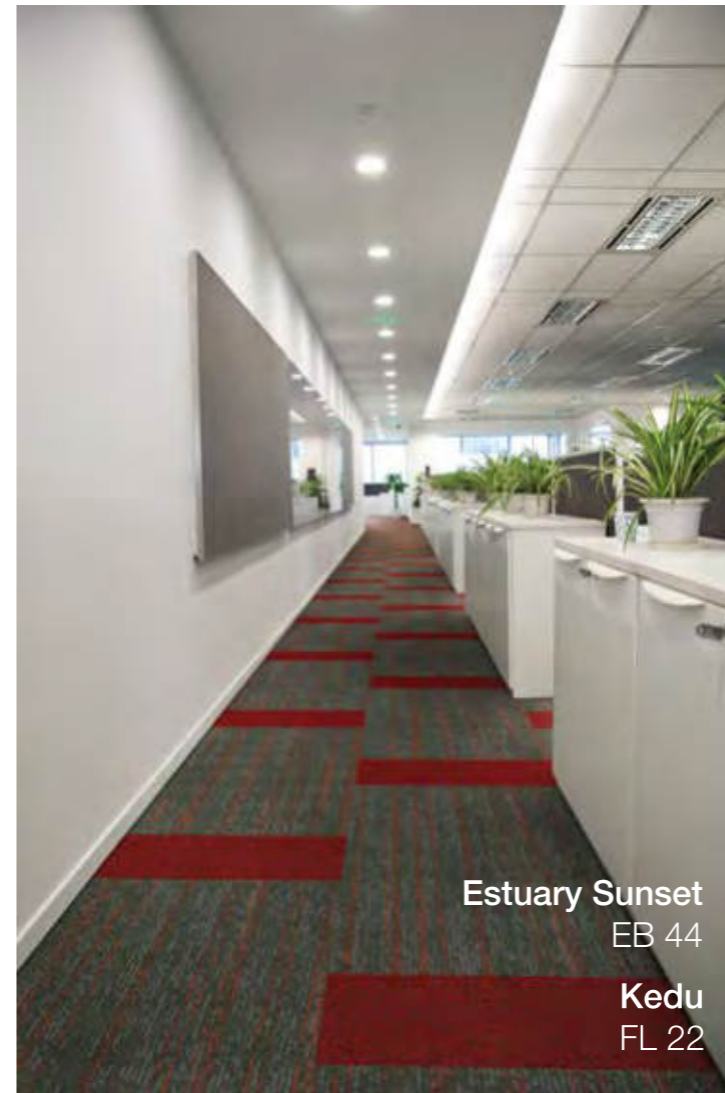
River
EB 03

River Sunset
EB 34

River Sand
EB 33

River Emerald
EB 32

River Azure
EB 31



Estuary Sunset
EB 44
Kedu
FL 22



Ebb-Wash

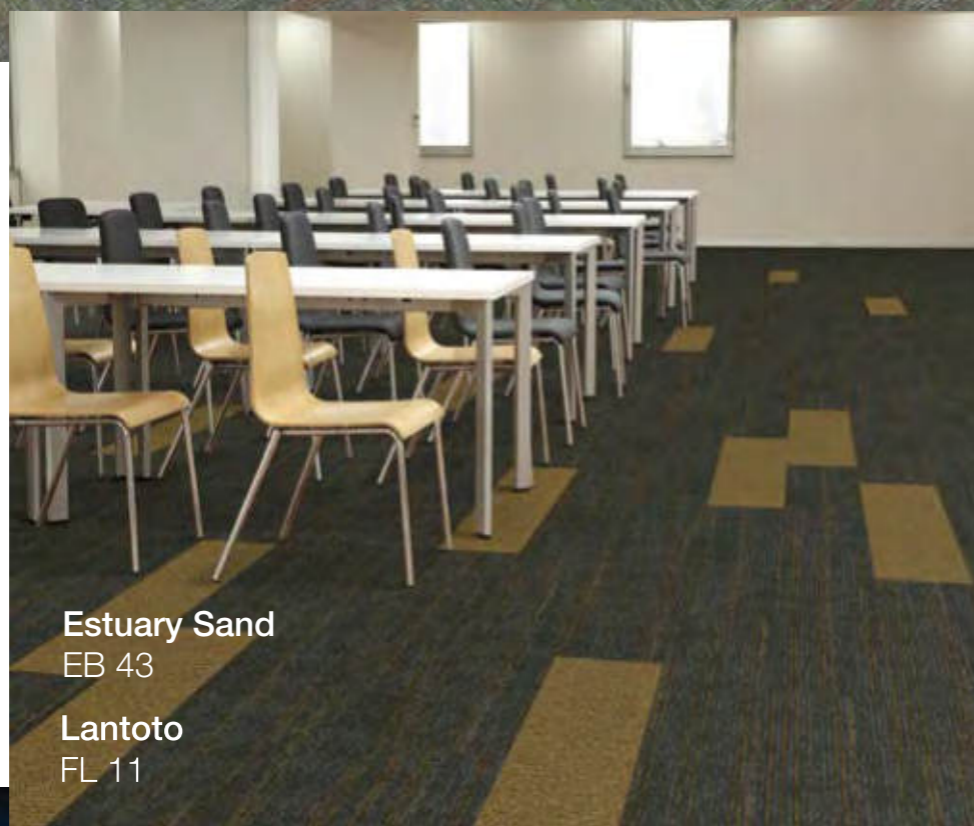
Upstream Collection

EBB-Wash adds a splash of Color to the Upstream Collection and is created to highlight how Carpets Inter is succeeding in preventing plastic waste from polluting our oceans and rejuvenating the natural habitats of our marine life

EBB-Wash is a dynamic organic pattern that will accentuate any interior floor space.

EcoSoft®

Environmentally Friendly Cushion Backing
Recycled and Recyclable Materials



Estuary Sand
EB 43

Lantoto
FL 11



River Azure
EB 31



River Emerald
EB 32



River Sand
EB 33



River Sunset
EB 34



Estuary Azure
EB 41



Estuary Emerald
EB 42



Estuary Sand
EB 43



Estuary Sunset
EB 44



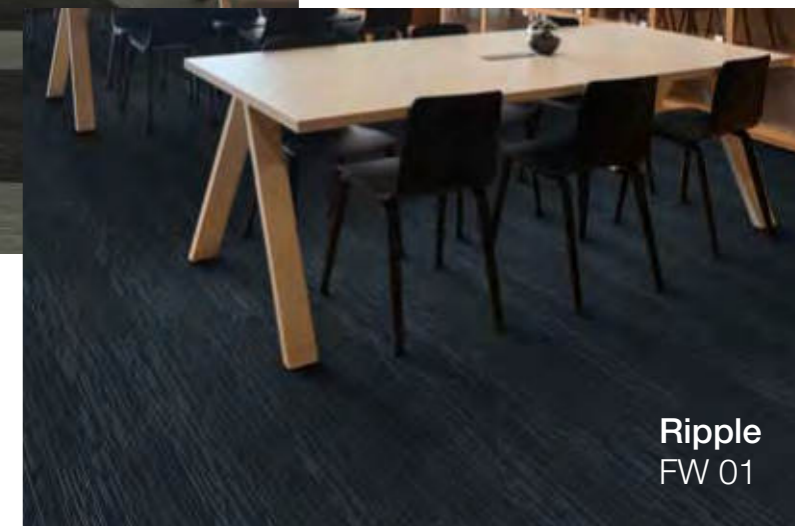
Tide
FW 04

Drift
FW 05



Backwash
FW 02

Drift
FW 05



Ripple
FW 01

Flow

Upstream Collection

Using sustainable 'fit for purpose' products into locations has a positive impact on our environment and the wellbeing of our planet.

EcoSoft®

Environmentally Friendly Cushion Backing
Recycled and Recyclable Materials



Ripple
FW 01

Backwash
FW 02

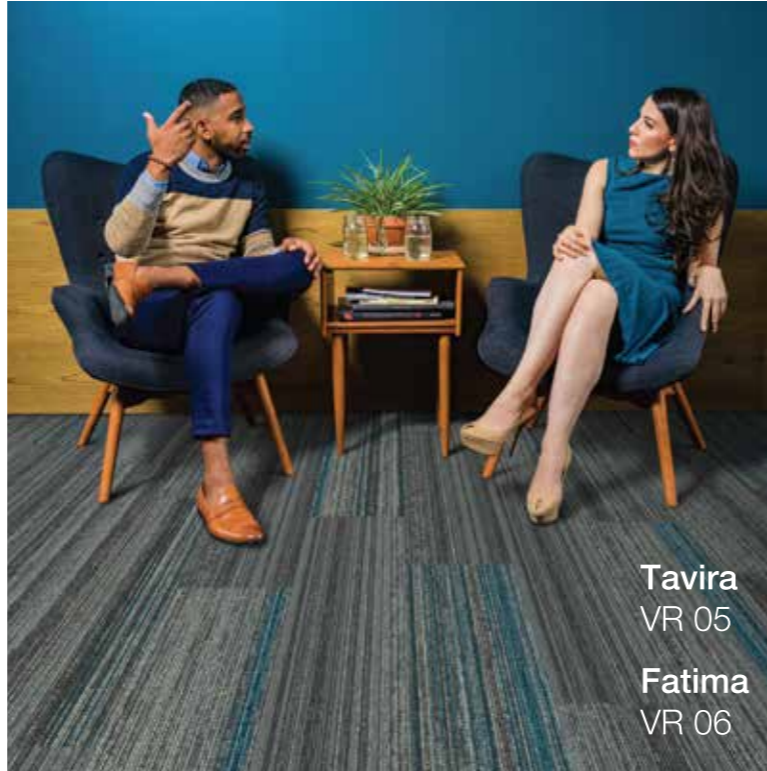
Walk
FW 03

Tide
FW 04

Drift
FW 05



VILA RICA



Tavira
VR 05
Fatima
VR 06



Lagos
VR 03

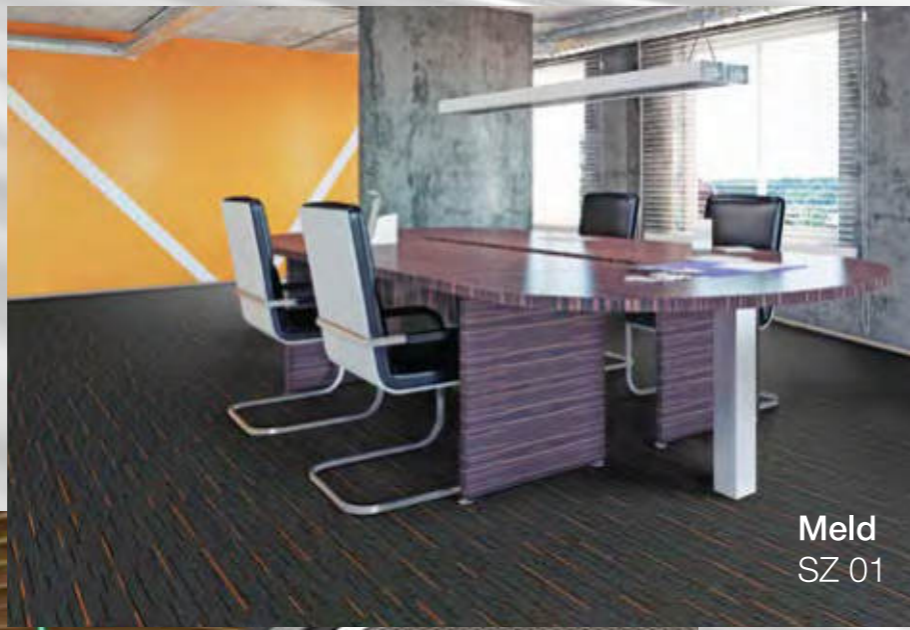


Alvao
VR 09

Vila Rica

Vila Rica is inspired by the vernacular architecture of historic Portugal, specifically from the vilas or small towns. The exteriors of the typical buildings combine mostly neutral walls enlivened with accent colors. The design uses variegated neutrals interspersed with accents of color in an organic linear pattern to create a simple texture that renders a quiet sophisticated look on the floor. The colors are designed to be used in combination or individually to create inspired floors and complement inspiring interiors.





Meld
SZ 01



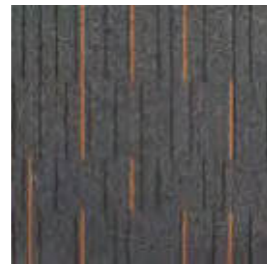
Mixture
SZ 04

Treble
SM 05

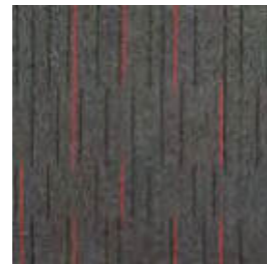
Key
SM 09

Zipline II

Graphic and architectural with bright highlights that accentuate the linear structure of the design, Zipline II is a compelling statement when used alone or together with a 'Color Symphony' as an accent color



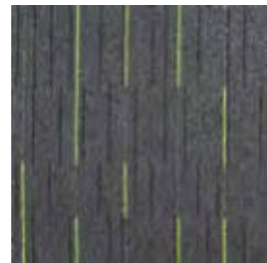
Meld
SZ 01



Fusion
SZ 02



Blend
SZ 03



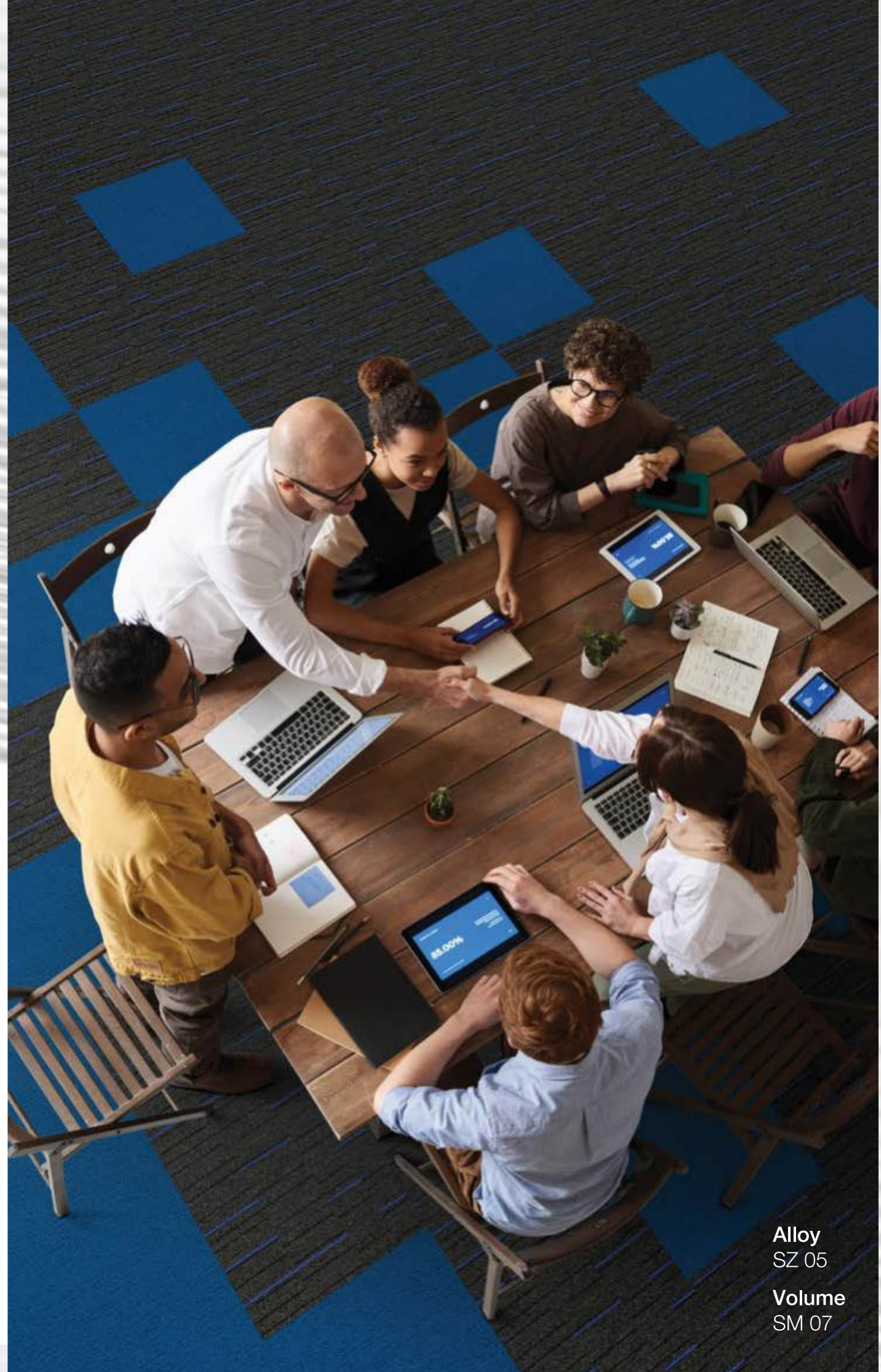
Mixture
SZ 04



Alloy
SZ 05



Compound
SZ 06



Alloy
SZ 05

Volume
SM 07

ZIPLINE II

Polypropylene Quick Ship

Available with EcoSquare® backing



Artline III

A line is simply a mark or stroke that is longer than it is broad; but, combine a multitude of these strokes together and they have the power to communicate an amount of information and emotion.

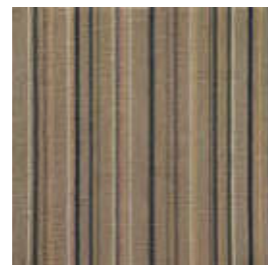
Through various mediums, the artist is manipulating the line in order to express the senses. Hatch marks and brush strokes become a means of translation between a colorful imagination and a work of art.



ARTLINE III



Silverpoint
AR 14



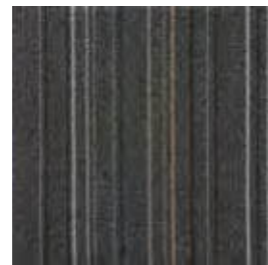
Beige Chalk
AR 15



Canvas Brush
AR 16



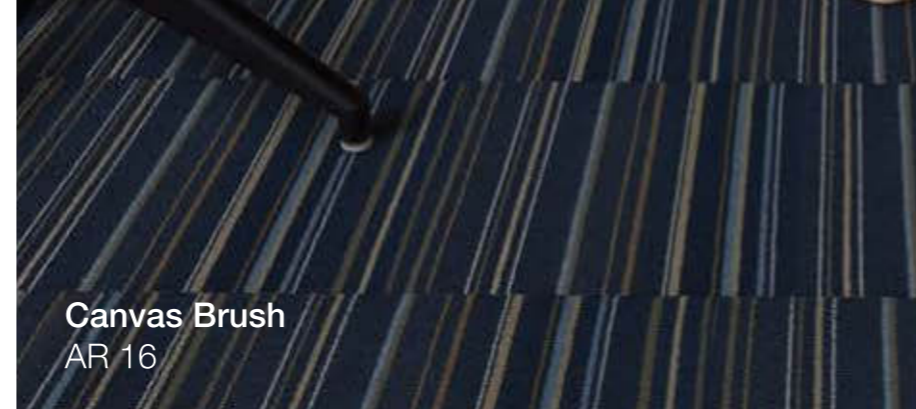
Ink Pen
AR 17



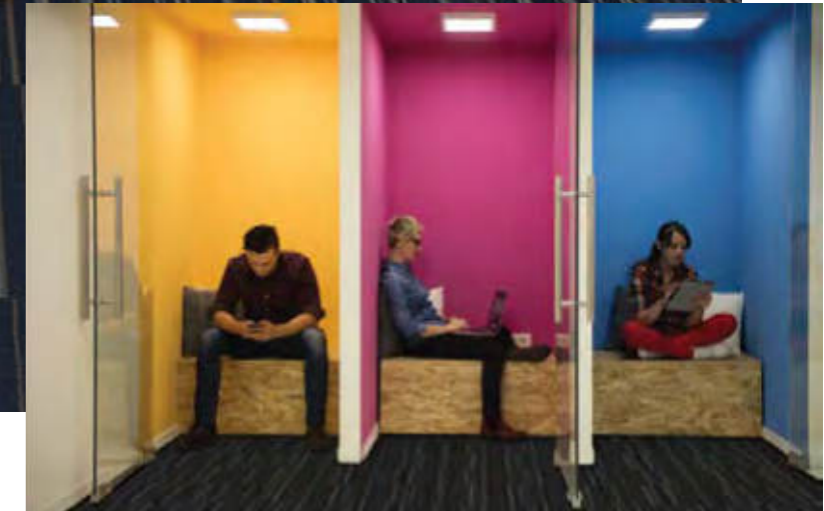
Graphite
AR 18



Blackboard
AR 19



Canvas Brush
AR 16



Graphite
AR 18

Hydra

Hydra is a moon of the planet Pluto, at the outer edges of our solar system. Hydra design is a panorama of texture and color inspired by the reflected light of Hydra's Moon.



Nimbus
HY 01



Blue Moon
HY 02



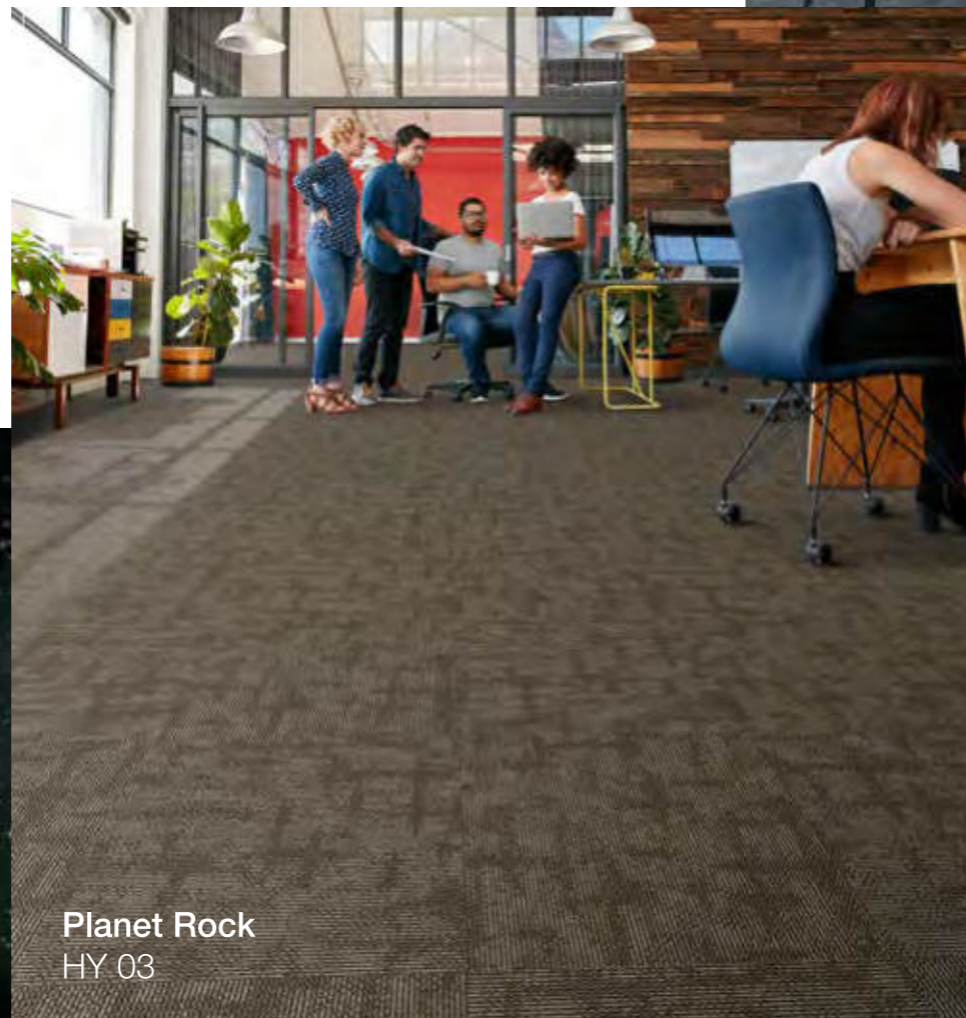
Planet Rock
HY 03



Red Star
HY 04



Blue Moon
HY 02



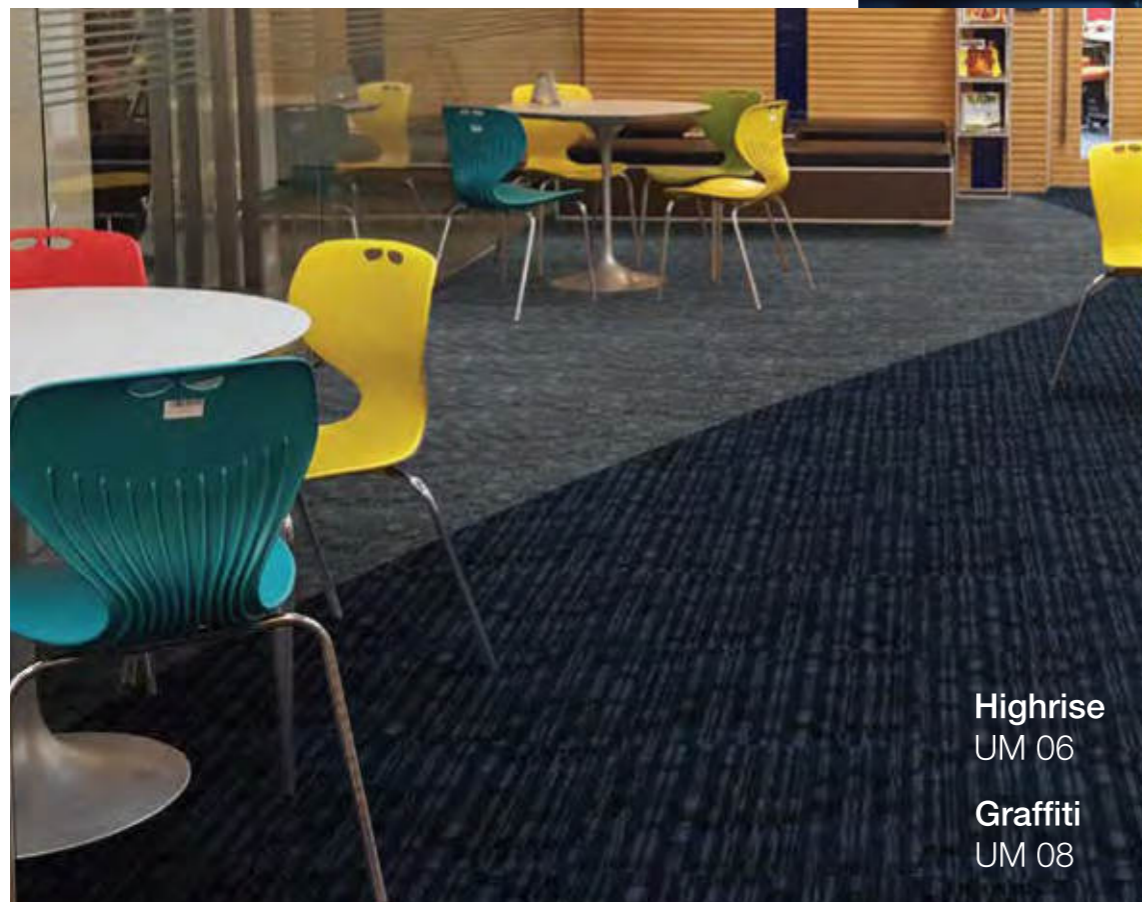
Planet Rock
HY 03



MEZZANINE



Condo
UM 07



Highrise
UM 06

Graffiti
UM 08



Mezzanine

The urban environment is as impetuous as it is sure. It motivates daily enterprise and amplifies a vibrant, social life. It's not defined by one or two particular components, but is rather a synthesis of improbable elements functioning in unison to create a truly inspired setting.

The individual components that modestly create this unique atmosphere are the inspiration for Mezzanine.



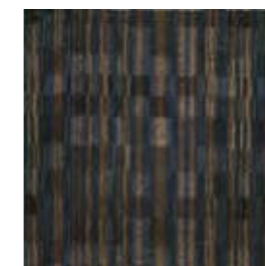
Crosswalk
UM 02



Taxicab
UM 04



Highrise
UM 06



Condo
UM 07



Graffiti
UM 08



Condo
PH 01

Rooftop
PH 02

Top Floor
PH 06

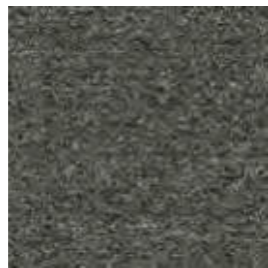
Co-Op
PH 09

Penthouse Plus II

The mix & match of Penthouse Plus II enables designers to achieve random and evolving patterns.



Condo
PH 01



Rooftop
PH 02



Top Floor
PH 06



Loft
PH 07



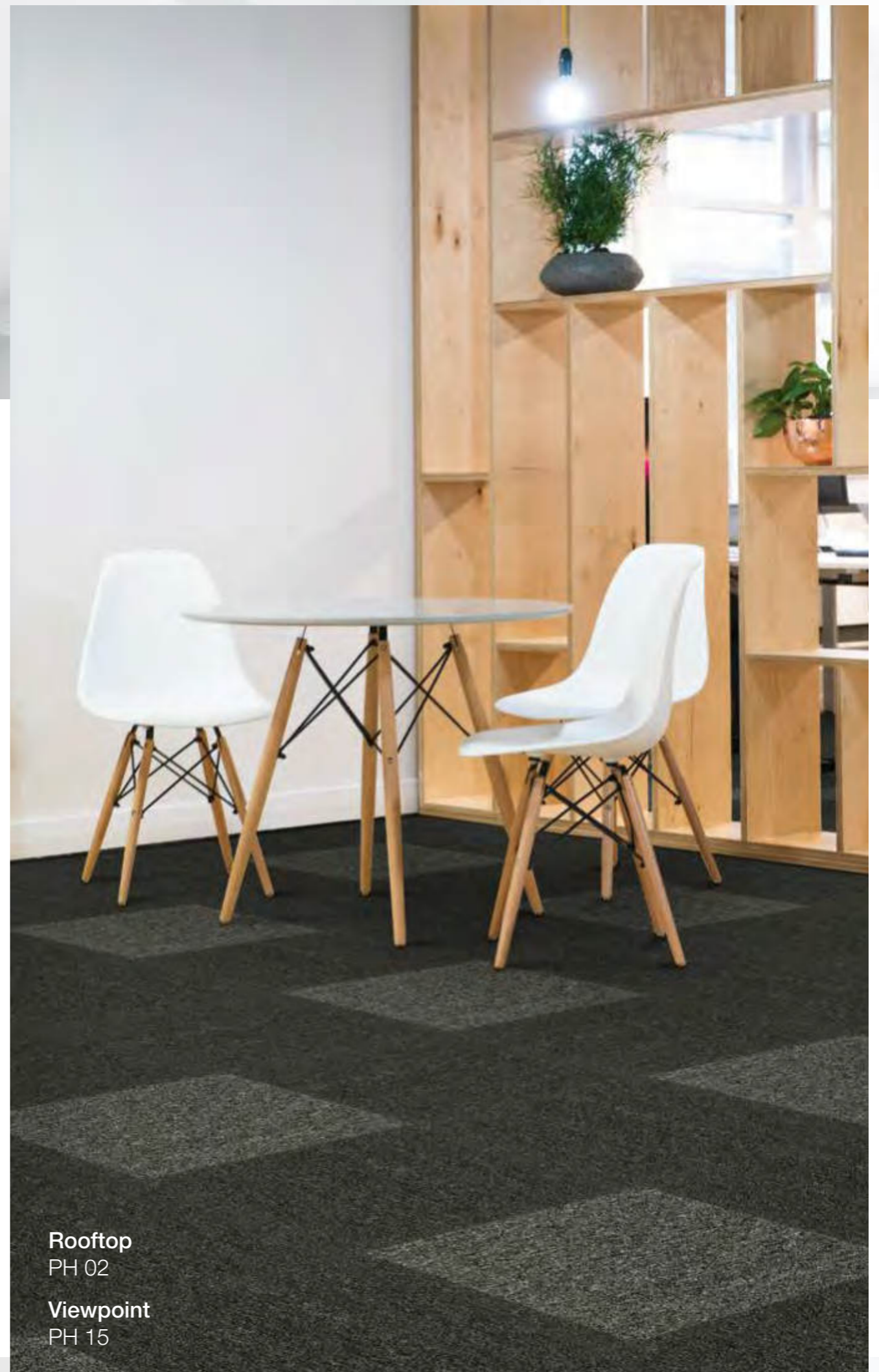
Co-Op
PH 09



Duplex
PH 14



Viewpoint
PH 15



Rooftop
PH 02

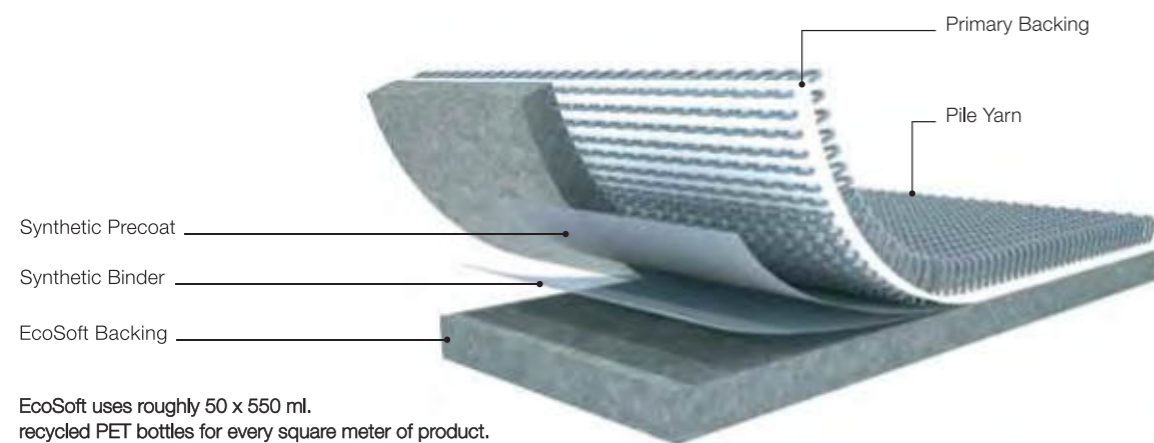
Viewpoint
PH 15

We will RECYCLE OVER 1,000,000,000 discarded PLASTIC BOTTLES by 2025

EcoSoft®

Sustainable Performance and Value

EcoSoft® is made from 80% post-consumer material reengineered from millions of discarded drinking water bottles, plus 5 to 10% post-industrial recycled PET. This environmentally friendly backing not only meets all the stringent performance criteria required for modular carpet, but consistently outperforms conventional PVC and bitumen hard back, as well as urethane cushion back in terms of durability, underfoot comfort, acoustical propensity and indoor air quality.



EcoSoft uses roughly 50 x 550 ml. recycled PET bottles for every square meter of product.

EcoSoft® Outstanding Features

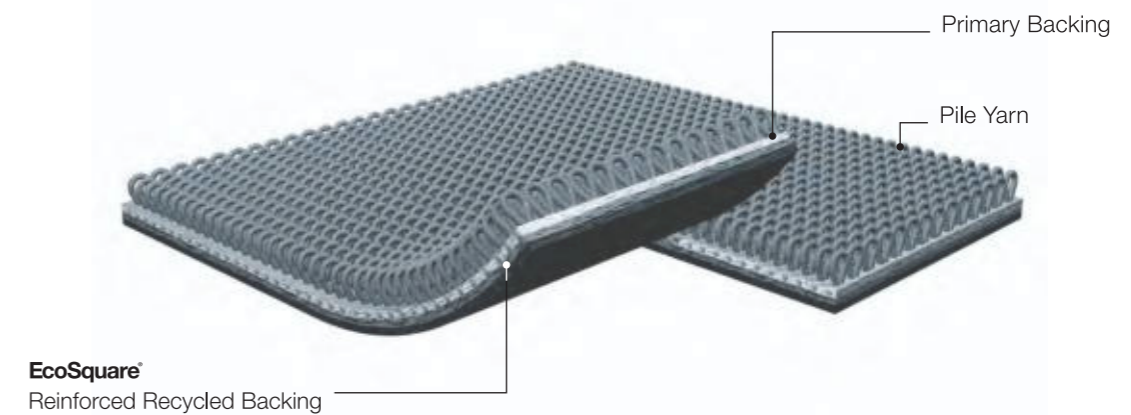
- > 85% recycled content backing
- > 100% recyclable
- > No PVC, Bitumen or Fiberglass content
- > Suitable for installation onto wet slab up to 99% RH
- > Superior Acoustical Propensity - outperforms hardback by 150% to 175% per Green Star IEQ10 internal noise level requirements
- > Excellent Dimensional Stability BS EN 986 less than 0.15%
- > Cushioning reduces wear and tear, fiber crush and user fatigue
- > EcoSoft® backed modular carpet product contributes up to 6 LEED points

In view of the superior properties outlined above, modular carpet with EcoSoft® backing is the ideal choice for Education facilities.

EcoSquare®

Sustainable Performance and Value

EcoSquare® is another step in Carpet Inter's ongoing Sustainability and Reclamation program, repurposing waste material into a recycled high performance modular carpet backing.

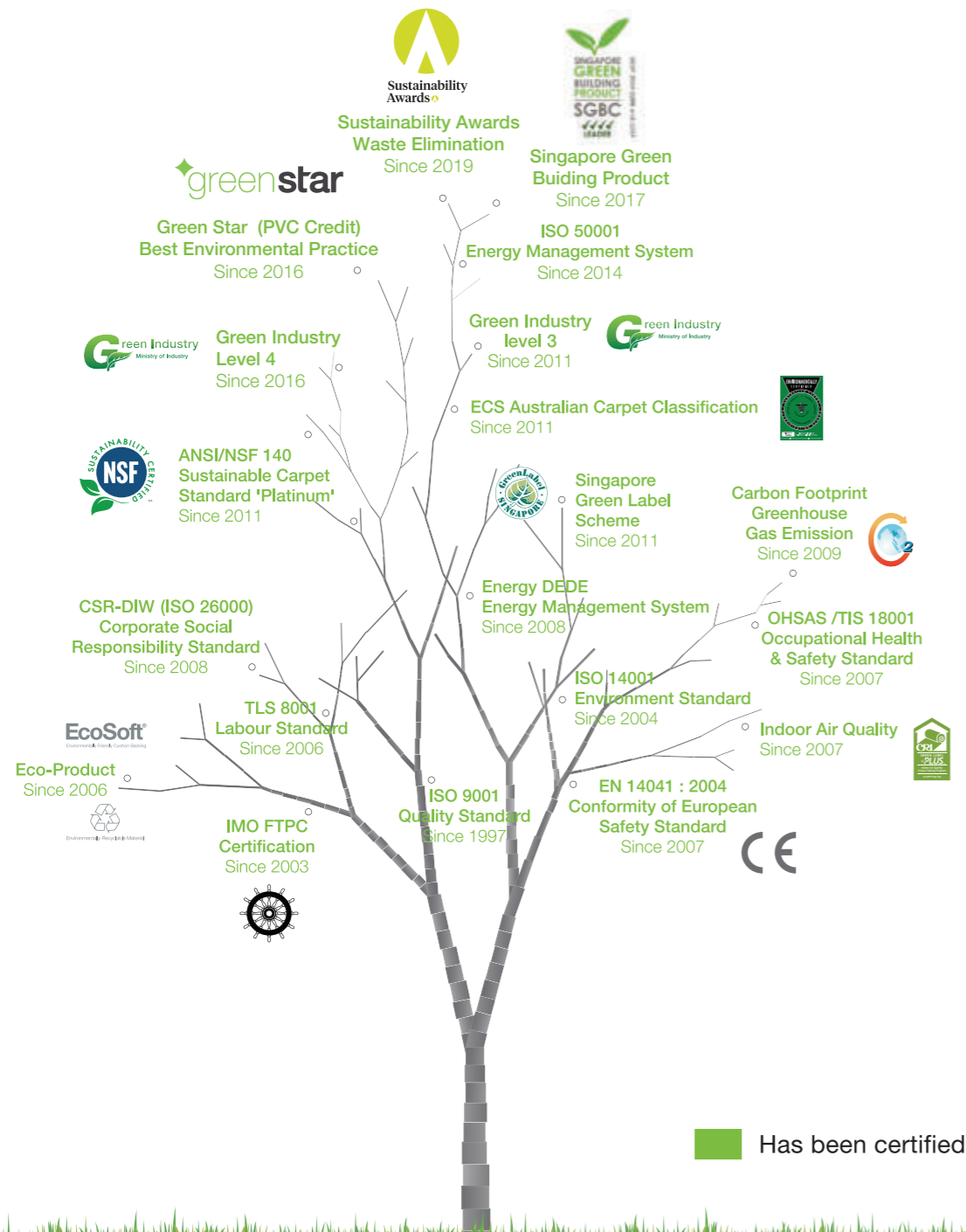


EcoSquare® Outstanding Features

- > 63.5% recycled content backing
- > 100% recyclable
- > Meets Greenstar best practice guidelines
- > Free of toxic plasticisers and stabilisers
- > Excellent Dimensional Stability BS EN 986 less than 0.15%
- > EcoSquare® backed modular carpet product contributes up to 5 LEED points

In view of the superior properties outlined above, modular carpet with EcoSquare® backing is the ideal choice for Education facilities.

Committed to the continuous growth of social responsibility and environmental practices.



Certification & Compliance

At Carpets Inter we understand the importance of making environmentally responsible decisions that are sensitive to our local and global communities.



Singapore Green Building Product

The Singapore Green Building Council forges public-private partnerships to foster innovative industry solutions across the entire building and construction value chain. Through its green building product and green building services labelling programmes, SGBC sets high standards for green building solutions both locally and regionally to help build more sustainable cities for better living.



Green Label Plus

Green Label Plus (GLP) is the flooring carpet standard for indoor air quality. It is an independent testing program that identifies carpet with very low emissions of VOCs (13 chemicals).

The certified product can deliver the point associated with IEQ credit 4.3 of LEED and IE 2.3 of TREES-NC (Thailand's Rating of Energy and Environmental Sustainability for New Construction and Major Renovation).



Green Industry

This guideline manual for entrepreneurs' green industry development is a part of green industry accreditation activity. It is a sample of guidelines for entrepreneurs who commit to environmentally-friendly business operations for sustainable development aimed at continuous improvement and social and environmental environment, both inside and outside the organization throughout the supply chain.



NSF 140

The first ANSI approved, multi-attribute sustainable carpet assessment standard which identifies that the certified carpets have reduced environment impact according to the award requirement.

This standard is the most comprehensive and rigorous benchmark in the U.S. flooring industry.

NSF 140 was designed to establish a system with varying levels of certification to define sustainable carpet. The sustainable carpet standard NSF 140 is recognised within the LEED scheme, the US equivalent to Green Star.



Carbon Footprint

Carbon Footprint of Products (CFP) takes into account the quantity of GHG emissions from each production unit throughout the whole life cycle (cradle-to-grave) of a product. Carbon footprint thus calculates the carbon dioxide equivalent (CO₂e) of the GHG emissions releasing from the raw material acquisition, manufacture, use, waste management and final disposal including related transports in all stages.

However, carbon footprint value only considers the product's environmental impacts in term of climate change, but excludes other environmental impact categories, such as biodiversity, acidification and eutrophication.



Environmental Certification Scheme (ECS)

The Code of Practice is an important element of the environmental certification of carpets registered with the Australian Carpet Classification Scheme (ACCS). This Code provides a guide to good environment management in all aspects of carpet manufacturing, and the subsequent carpet life cycle performance. The provisions of the Code include Raw Materials, Manufacturing, Environmental Risk Management, Land and Ground Water Management, and Records and Reporting.



Singapore Green Labelling Scheme

The Singapore Green Labelling Scheme (SGLS) was launched in May 1992 to endorse consumer products and services that have less undesirable effects on our environment. This is administered by the Singapore Environment Council.

The SGLS is applicable to most products except food, drinks and pharmaceuticals. Green Label products include items produced locally or internationally that have been evaluated through stringent standards.



Sustainability Awards

With Australia being a global leader in sustainable and environmental practices, Carpets Inter's EcoSoft® recently entered and beat over 35 entrants to WIN 1st prize in the 'Waste Elimination' category, an award voted by leading Australian architects and environmentalists.

The award recognizes Carpet Inter's continued efforts to provide Australia's leading Architects and Interior Design practices with fit for purpose sustainable product solutions, suitable for WELL Buildings in many appealing styles.



CE Mark

The CE Mark shows to the consumer that the product complies with the Construction Product Directive (CPD) and fulfills the essential requirements, which are closely linked to safety issues related to the product and its use. Two of the essential requirements are mandatory.

- Slip Resistance
- Reaction to Fire

The advantages of CE Marking are that with a CE Marking on your product you have unrestricted trade within the European Economic Area because there are no more different national trade barriers for products.



www.carpetsinter.com, info@carpetsinter.com © Carpets Inter 2020

Headquarters

2054 New Petchburi Road
Bangkapi, Huaykwang, Bangkok 10310 Thailand
Tel +66 (0) 2314-5402, Fax +66 (0) 2318-3537

Showrooms

1/19 Moo 1, Manidol, Pandad,
Muang, Chiangmai 50000 Thailand
Tel +66 (053) 274-584-5
Fax +66 (053) 274-587

31/19 Rajyindee Road,
Hadyai, Songkla 90110 Thailand
Tel 074-209790-1
Fax 074-209792