

PRO DUCT PORT FOLIO 2020

Nylon & Polypropylene

At Carpets Inter, we create modular carpet that does more than just make the world more beautiful; it makes it more livable. We do this with products that meet stringent indoor air-quality needs, are safe to manufacture and utilize and incorporate recycled materials wherever feasible including our unique EcoSoft® backing fabricated from millions of recycled plastic bottles. Our commitment to ecological sustainability extends beyond our product. We practice it in everything we do - from manufacturing facilities that maintain the highest environmental standards, to reducing our carbon footprint in every facet of our global business.



Modular Carpet Collection Portfolio

At Carpets Inter, we aim higher. We work to be a better company. This endeavor has its foundation in the manufacturing of modular carpet products that are well designed, durable, and comfortable underfoot; and is sustained through shared values of environmental responsibility, social accountability, and economic fairness that make a positive impact wherever our products are sold or used throughout the world. We are, above all, a multinational company with a multicultural commitment to good global citizenship.

We understand that you won't have the need to use all of exciting modular carpet collections, but aim to provide an impeccable sense of style in a preferred specification.

The portfolio provides styles that are available from stock in our EcoSquare Backing (☻), product specification and a recommended installation layout.

For product coordination, 2D 'Mix and Match' virtual simulation, full specification data, installation and cleaning and maintenance guidelines you may access our informative website (www.carpetsinter.com). Should you need further inspiration, data or physical samples, your exclusive Carpets Inter distributor or CI sales representative will be pleased to provide accordingly.



Mix, Match and Create

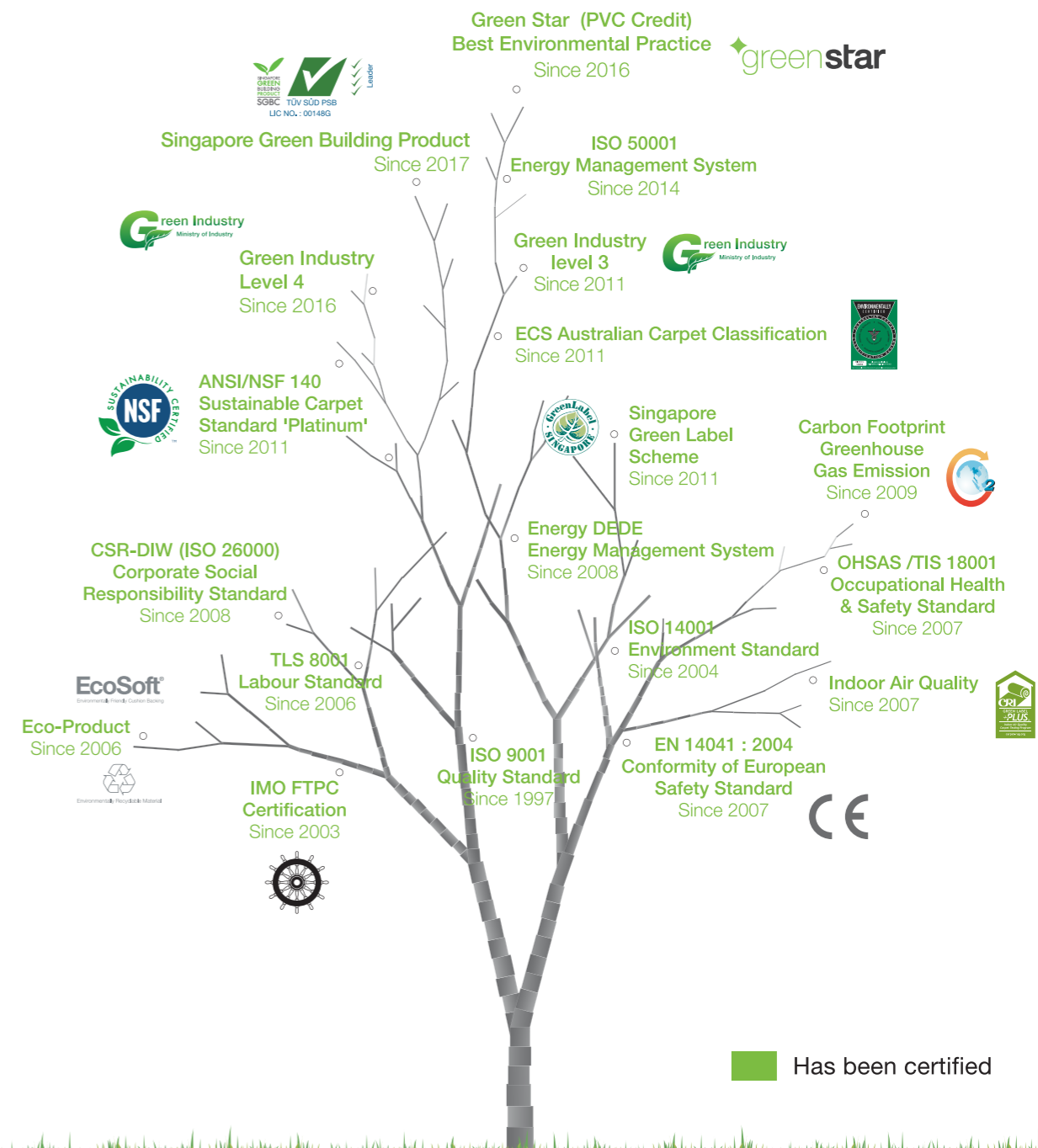


EcoSoft® Tile Installation



EcoSquare® Tile Installation

Committed to the continuous growth of social responsibility and environmental practices.



Certification & Compliance

At Carpets Inter we understand the importance of making environmentally responsible decisions that are sensitive to our local and global communities.



Green Label Plus

Green Label Plus (GLP) is the flooring carpet standard for indoor air quality. It is an independent testing program that identifies carpet with very low emissions of VOCs (13 chemicals).

The certified product can deliver the point associated with IEQ credit 4.3 of LEED and IE 2.3 of TREES-NC (Thailand's Rating of Energy and Environmental Sustainability for New Construction and Major Renovation).



NSF 140

The first ANSI approved, multi-attribute sustainable carpet assessment standard which identifies that the certified carpets have reduced environment impact according to the award requirement.

This standard is the most comprehensive and rigorous benchmark in the U.S. flooring industry.

NSF 140 was designed to establish a system with varying levels of certification to define sustainable carpet. The sustainable carpet standard NSF 140 is recognised within the LEED scheme, the US equivalent to Green Star.



Environmental Certification Scheme (ECS)

The Code of Practice is an important element of the environmental certification of carpets registered with the Australian Carpet Classification Scheme (ACCS). This Code provides a guide to good environment management in all aspects of carpet manufacturing, and the subsequent carpet life cycle performance. The provisions of the Code include Raw Materials, Manufacturing, Environmental Risk Management, Land and Ground Water Management, and Records and Reporting.



Sustainability Awards

With Australia being a global leader in sustainable and environmental practices, Carpets Inter's EcoSoft® recently entered and beat over 35 entrants to WIN 1st prize in the 'Waste Elimination' category, an award voted by leading Australian architects and environmentalists.

The award recognizes Carpet Inter's continued efforts to provide Australia's leading Architects and Interior Design practices with fit for purpose sustainable product solutions, suitable for WELL Buildings in many appealing styles.



Singapore Green Building Product

The Singapore Green Building Council forges public-private partnerships to foster innovative industry solutions across the entire building and construction value chain. Through its green building product and green building services labelling programmes, SGBC sets high standards for green building solutions both locally and regionally to help build more sustainable cities for better living.



Green Industry

This guideline manual for entrepreneurs' green industry development is a part of green industry accreditation activity. It is a sample of guidelines for entrepreneurs who commit to environmentally-friendly business operations for sustainable development aimed at continuous improvement and social and environmental environment, both inside and outside the organization throughout the supply chain.



Carbon Footprint

Carbon Footprint of Products (CFP) takes into account the quantity of GHG emissions from each production unit throughout the whole life cycle (cradle-to-grave) of a product. Carbon footprint thus calculates the carbon dioxide equivalent (CO₂eq) of the GHG emissions releasing from the raw material acquisition, manufacture, use, waste management and final disposal including related transports in all stages.

However, carbon footprint value only considers the product's environmental impacts in term of climate change, but excludes other environmental impact categories, such as biodiversity, acidification and eutrophication.



Singapore Green Labelling Scheme

The Singapore Green Labelling Scheme (SGLS) was launched in May 1992 to endorse consumer products and services that have less undesirable effects on our environment. This is administered by the Singapore Environment Council.

The SGLS is applicable to most products except food, drinks and pharmaceuticals. Green Label products include items produced locally or internationally that have been evaluated through stringent standards.



CE Mark

The CE Mark shows to the consumer that the product complies with the Construction Product Directive (CPD) and fulfils the essential requirements, which are closely linked to safety issues related to the product and its use. Two of the essential requirements are mandatory.

1. Slip Resistance
2. Reaction to Fire

The advantages of CE Marking are that with a CE Marking on your product you have unrestricted trade within the European Economic Area because there are no more different national trade barriers for products.

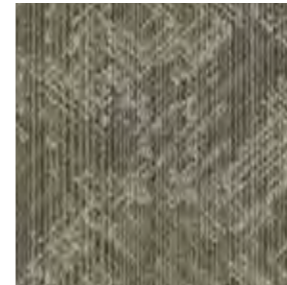



Pattern Portfolio

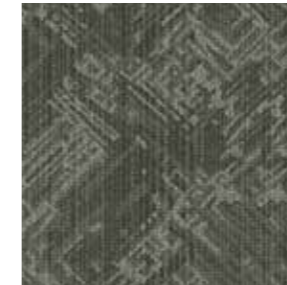




Annex  Stock Keeping Unit




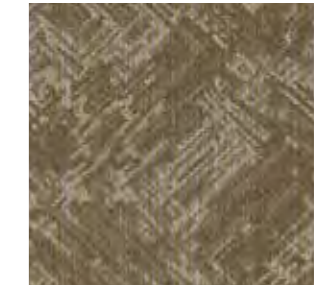
Caption 
NX 01



Bookmark 
NX 02



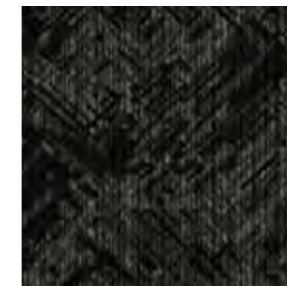
Subscript 
NX 03




Index 
NX 04



Title 
NX 05



Footnote 
NX 06

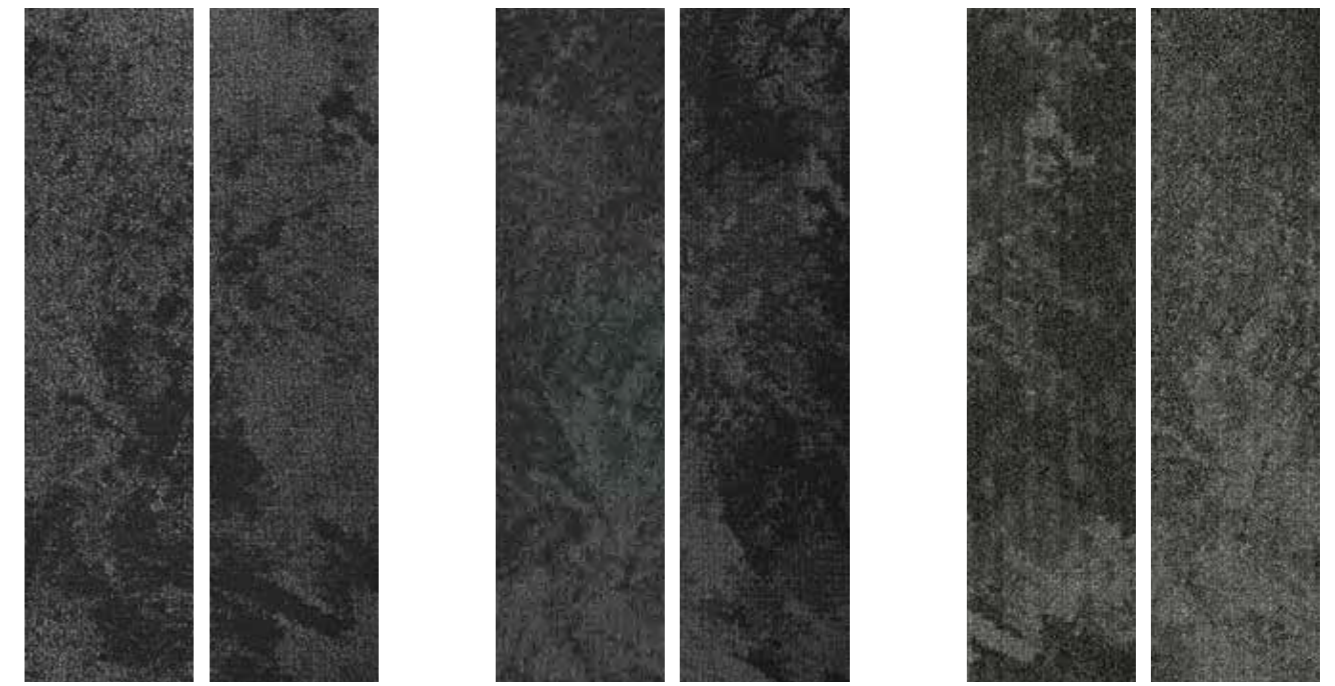
CARPET TILE SPECIFICATIONS


CONSTRUCTION	Multi Level Texture Tufted	BACKING STRUCTURE	EcoSquare ® Reinforced Recycled Backing
PILE FIBER	100% Solution Dyed Nylon	PILE TREATMENT	Stain and Soil Protection
TUFTING GAUGE	1/12 inch	TILE SIZE	50 x 50 cm.
PILE HEIGHT	3.0 - 5.5 mm.	BACKING OPTIONS AND SIZE	Contact your sales representative for information
TOTAL CARPET WEIGHT	4,115 gm/sq.m. for EcoSquare ®		

Specifications are subject to normal manufacturing tolerances, and subject to change without prior notice.
As in all quality carpets, colors are subject to dye lot variations.




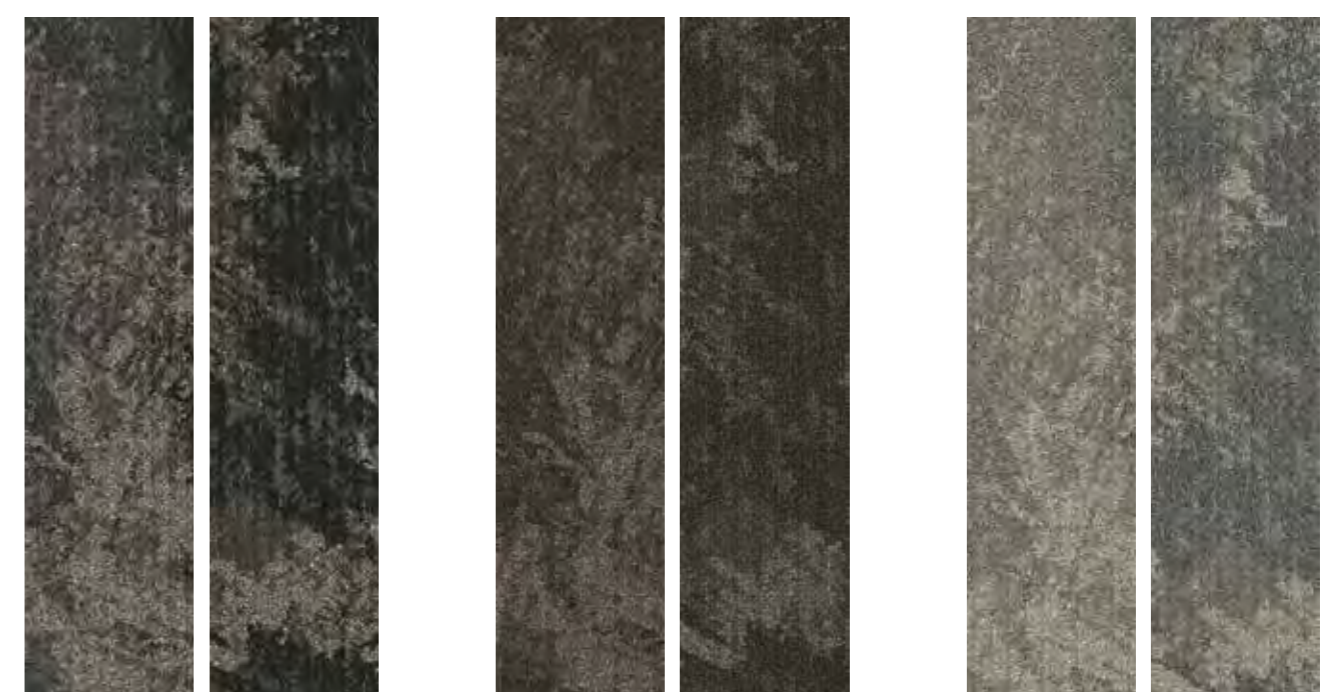
Beton  Stock Keeping Unit




Pozzolana  BT 01

Strata  BT 02

Screed  BT 03



Portland  BT 04

Mortar  BT 05

Clay  BT 06

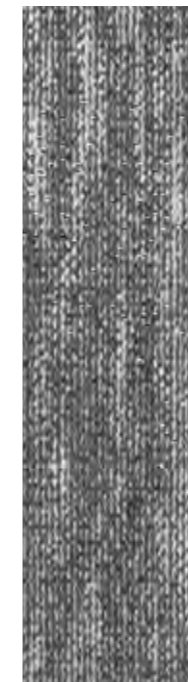
CARPET TILE SPECIFICATIONS

CONSTRUCTION	Multi Level Texture Tufted
PILE FIBER	100% Solution Dyed Nylon
TUFTING GAUGE	1/12 inch
PILE HEIGHT	3.0 - 5.5 mm.
TOTAL CARPET WEIGHT	2,996 gm/sq.m. for EcoSoft 4,111 gm/sq.m. for EcoSquare

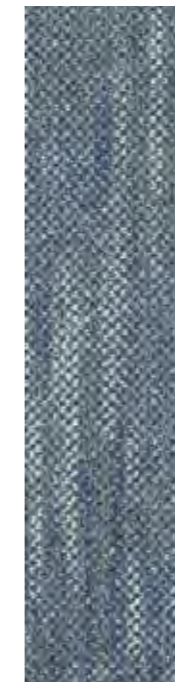
BACKING STRUCTURE	EcoSoft , Recycled Cushion Backing EcoSquare , Reinforced Recycled Backing
PILE TREATMENT	Stain and Soil Protection
TILE SIZE	25 x 100 cm.
BACKING OPTIONS AND SIZE	Contact your sales representative for information

Specifications are subject to normal manufacturing tolerances, and subject to change without prior notice.
As in all quality carpets, colors are subject to dye lot variations.

Breaking Waves - Across the Sea



Ice Floe
SE 01



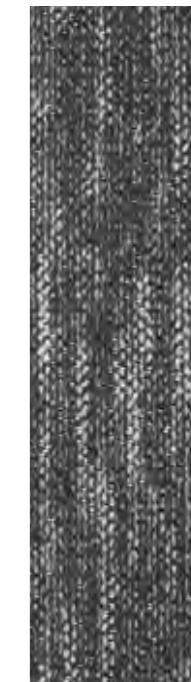
Gulf Stream
SE 02



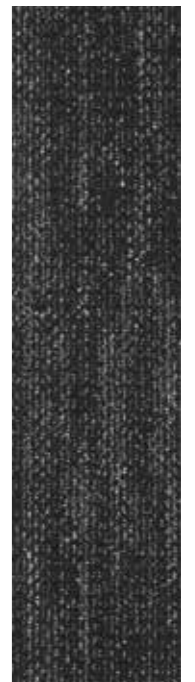
Blue Whale
SE 03



Shoreline
SE 04



Grey Seal
SE 05



Black Pearl
SE 06



Andaman
Beach
SE 07



Seashell
SE 08



Rockaway
SE 09



Seagrass
SE 10



Golden
Reef
SE 11



Red Coral
SE 12

CARPET TILE SPECIFICATIONS

CONSTRUCTION	Multi Level Texture Tufted
PILE FIBER	100% Solution Dyed Nylon
TUFTING GAUGE	1/12 inch
PILE HEIGHT	3.0 - 5.5 mm., 3.0 - 5.0 mm.
TOTAL CARPET WEIGHT	2,895 gm/sq.m. for EcoSoft 4,010 gm/sq.m. for EcoSquare

BACKING STRUCTURE	EcoSoft ®, Recycled Cushion Backing
PILE TREATMENT	EcoSquare ®, Reinforced Recycled Backing
TILE SIZE	50 x 50 cm., 25 x 100 cm.
BACKING OPTIONS AND SIZE	Contact your sales representative for information

Specifications are subject to normal manufacturing tolerances, and subject to change without prior notice.
As in all quality carpets, colors are subject to dye lot variations.



Breaking Waves - Over the Ocean



Ice Floe
OC 01



Gulf Stream
OC 02



Blue Whale
OC 03



Shoreline
OC 04



Grey Seal
OC 05



Black Pearl
OC 06



Andaman
Beach
OC 07



Seashell
OC 08



Rockaway
OC 09



Seagrass
OC 10



Golden
Reef
OC 11



Red Coral
OC 12

CARPET TILE SPECIFICATIONS

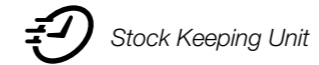
CONSTRUCTION	Multi Level Texture Tufted
PILE FIBER	100% Solution Dyed Nylon
TUFTING GAUGE	1/12 inch
PILE HEIGHT	3.0 - 5.5 mm., 3.0 - 5.0 mm.
TOTAL CARPET WEIGHT	2,895 gm/sq.m. for EcoSoft 4,010 gm/sq.m. for EcoSquare

BACKING STRUCTURE	EcoSoft , Recycled Cushion Backing EcoSquare , Reinforced Recycled Backing
PILE TREATMENT	Stain and Soil Protection
TILE SIZE	50 x 50 cm., 25 x 100 cm.
BACKING OPTIONS AND SIZE	Contact your sales representative for information

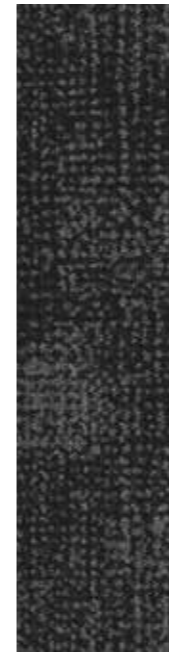
Specifications are subject to normal manufacturing tolerances, and subject to change without prior notice.
As in all quality carpets, colors are subject to dye lot variations.



Croplands - Roots



Base



Peat
CL 01



Humus
CL 02



Silt
CL 03

Accent



Pumpkin
Peat
CL 04



Okra
Peat
CL 05



Chili
Peat
CL 06



Chicory
Peat
CL 07



Eggplant
Peat
CL 08

CARPET TILE SPECIFICATIONS

CONSTRUCTION	Multi Level Texture Tufted	BACKING STRUCTURE	EcoSoft®, Recycled Cushion Backing
PILE FIBER	100% Solution Dyed Nylon	PILE TREATMENT	EcoSquare®, Reinforced Recycled Backing
TUFTING GAUGE	1/12 inch	TILE SIZE	25 x 100 cm.
PILE HEIGHT	3.0 - 5.5 mm.	BACKING OPTIONS AND SIZE	Contact your sales representative for information
TOTAL CARPET WEIGHT	2,895 gm/sq.m. for EcoSoft® 4,010 gm/sq.m. for EcoSquare®		

Specifications are subject to normal manufacturing tolerances, and subject to change without prior notice.
As in all quality carpets, colors are subject to dye lot variations.



Croplands - Organic



Base



Clay
CL 09



Loam
CL 10



Sand
CL 11

Accent



Corn
Clay
CL 12



Okra
Clay
CL 13



Chili
Clay
CL 14



Blueberry
Clay
CL 15



Rhubarb
Clay
CL 16

CARPET TILE SPECIFICATIONS

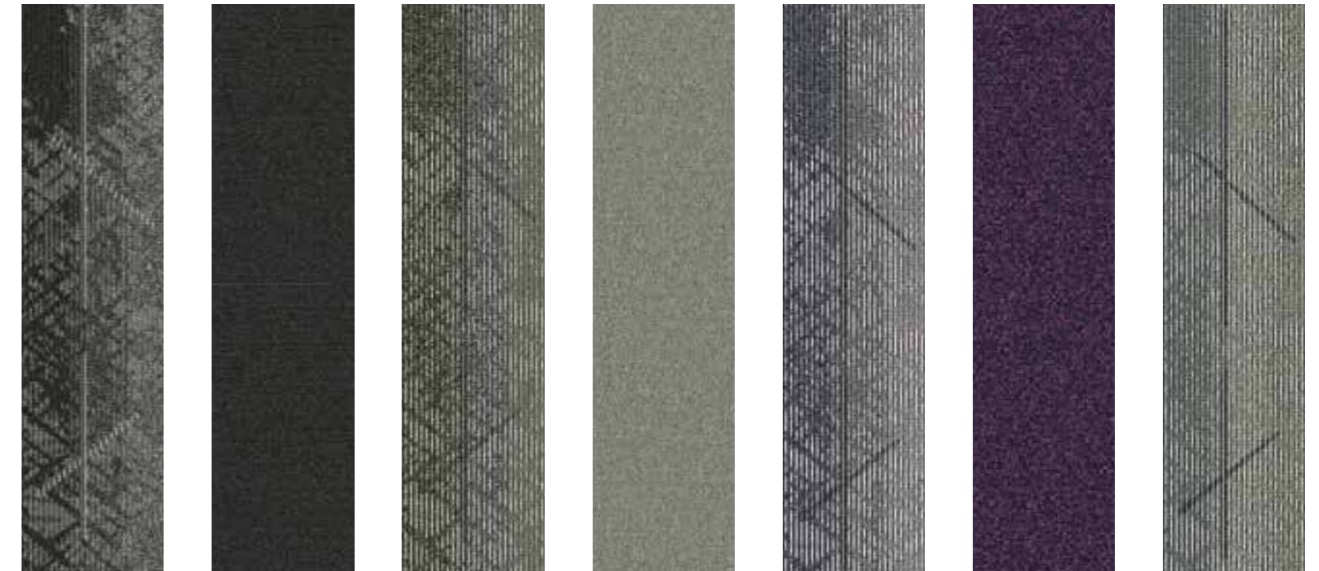
CONSTRUCTION	Multi Level Texture Tufted
PILE FIBER	100% Solution Dyed Nylon
TUFTING GAUGE	1/12 inch
PILE HEIGHT	3.0 - 5.5 mm.
TOTAL CARPET WEIGHT	2,895 gm/sq.m. for EcoSoft 4,010 gm/sq.m. for EcoSquare

BACKING STRUCTURE	EcoSoft ®, Recycled Cushion Backing
PILE TREATMENT	EcoSquare ®, Reinforced Recycled Backing
TILE SIZE	Stain and Soil Protection 25 x 100 cm.
BACKING OPTIONS AND SIZE	Contact your sales representative for information

Specifications are subject to normal manufacturing tolerances, and subject to change without prior notice. As in all quality carpets, colors are subject to dye lot variations.



Headlands - Peaks



Rocky
HL 01

Akanda
FL 06

Ridge
HL 02

Banco
FL 14

Outcrop
HL 03

Caroni
FL 19

Peninsula
HL 04

Headlands - Peaks
Rocky HL 01

Flatlands
Akanda FL 06

CARPET TILE SPECIFICATIONS

CONSTRUCTION	Multi Level Texture Tufted	BACKING STRUCTURE	EcoSoft , Recycled Cushion Backing
PILE FIBER	100% Solution Dyed Nylon	PILE TREATMENT	EcoSquare , Reinforced Recycled Backing
TUFTING GAUGE	1/12 inch	TILE SIZE	25 x 100 cm.
PILE HEIGHT	3.0 - 5.5 mm.	BACKING OPTIONS AND SIZE	Contact your sales representative for information
TOTAL CARPET WEIGHT	2,962 gm/sq.m. for EcoSoft 4,077 gm/sq.m. for EcoSquare		

Specifications are subject to normal manufacturing tolerances, and subject to change without prior notice.
As in all quality carpets, colors are subject to dye lot variations.



Headlands - Edge
Atoll HL 05

Flatlands
Katavi FL16

Headlands - Edge



Atoll
HL 05

Matobo
FL 15

Fjord
HL 06

Gola
FL 01

Gulf
HL 07

Katavi
FL 16

Cove
HL 08

CARPET TILE SPECIFICATIONS

CONSTRUCTION	Multi Level Texture Tufted
PILE FIBER	100% Solution Dyed Nylon
TUFTING GAUGE	1/12 inch
PILE HEIGHT	3.0 - 5.5 mm.
TOTAL CARPET WEIGHT	2,962 gm/sq.m. for EcoSoft 4,077 gm/sq.m. for EcoSquare

BACKING STRUCTURE	EcoSoft , Recycled Cushion Backing EcoSquare , Reinforced Recycled Backing
PILE TREATMENT	Stain and Soil Protection
TILE SIZE	25 x 100 cm.
BACKING OPTIONS AND SIZE	Contact your sales representative for information

Specifications are subject to normal manufacturing tolerances, and subject to change without prior notice.
As in all quality carpets, colors are subject to dye lot variations.



Headlands - Pathways



Dune
HL 09

Lantoto
FL 11

Sandbar
HL 10

Campo
FL 07

Cliff-top
HL 11

Sapo
FL 10

Coastal Path
HL 12

Headlands - Pathways
Coastal Path HL 12

Flatlands
Sapo FL10

CARPET TILE SPECIFICATIONS

CONSTRUCTION	Multi Level Texture Tufted
PILE FIBER	100% Solution Dyed Nylon
TUFTING GAUGE	1/12 inch
PILE HEIGHT	3.0 - 5.5 mm.
TOTAL CARPET WEIGHT	2,962 gm/sq.m. for EcoSoft 4,077 gm/sq.m. for EcoSquare

BACKING STRUCTURE	EcoSoft , Recycled Cushion Backing EcoSquare , Reinforced Recycled Backing
PILE TREATMENT	Stain and Soil Protection
TILE SIZE	25 x 100 cm.
BACKING OPTIONS AND SIZE	Contact your sales representative for information

Specifications are subject to normal manufacturing tolerances, and subject to change without prior notice.
As in all quality carpets, colors are subject to dye lot variations.




Textural Portfolio





Apex II  Stock Keeping Unit



Soapstone
AA 02 




Slate
AA 03 



Graphite
AA 04



Raven
AA 05 



Espresso
AA 07



Leather
AA 08




Lava
AA 10



Midnight
AA 11 



Sandcastle
AA 14 



Dusk
AA 15 

CARPET TILE SPECIFICATIONS

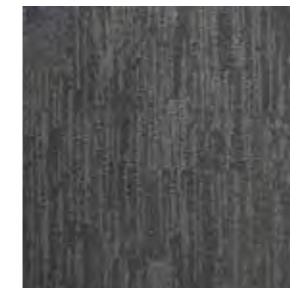
CONSTRUCTION	Multi Level Texture Tufted
PILE FIBER	100% Solution Dyed Nylon
TUFTING GAUGE	1/12 inch
PILE HEIGHT	2.5 - 5.5 mm.
TOTAL CARPET WEIGHT	3,064 gm/sq.m. for EcoSoft 4,179 gm/sq.m. for EcoSquare


BACKING STRUCTURE	EcoSoft , Recycled Cushion Backing EcoSquare , Reinforced Recycled Backing
PILE TREATMENT	Stain and Soil Protection
TILE SIZE	50 x 50 cm.
BACKING OPTIONS AND SIZE	Contact your sales representative for information

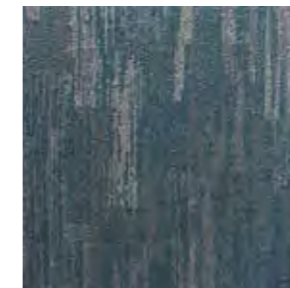
Specifications are subject to normal manufacturing tolerances, and subject to change without prior notice.
As in all quality carpets, colors are subject to dye lot variations.

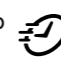


Breaking Ground – Mesa  Stock Keeping Unit




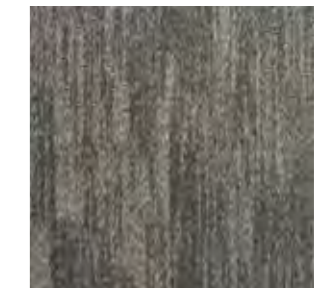
Gola
MS 01 




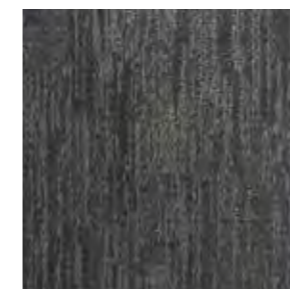
Mucusso
MS 02 




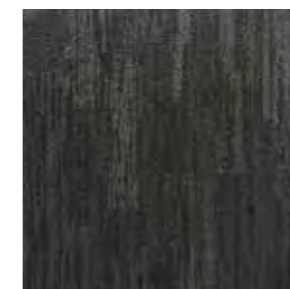
Arusha
MS 03 




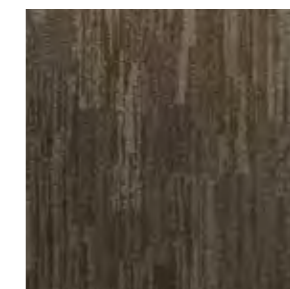
Omo
MS 04 




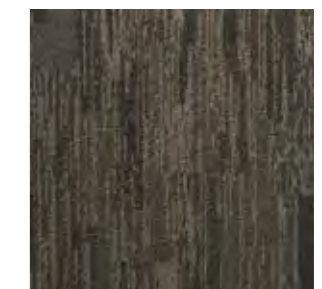
Lona
MS 05 




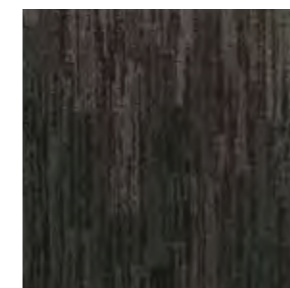
Akanda
MS 06 




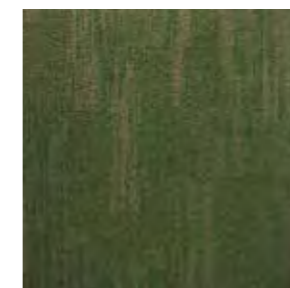
Campo
MS 07 




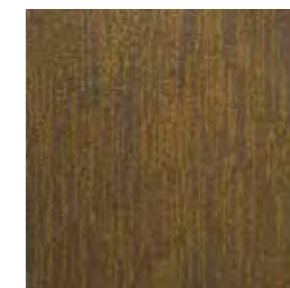
Taza
MS 08 



Ruma
MS 09 




Sapo
MS 10 



Lantoto
MS 11 



Fogo
MS 12 

Breaking Ground – Mesa

Omo MS 04
Akanda MS 06
Fogo MS 12

CARPET TILE SPECIFICATIONS

CONSTRUCTION	Multi Level Texture Tufted	BACKING STRUCTURE	EcoSoft ®, Recycled Cushion Backing
PILE FIBER	100% Solution Dyed Nylon	PILE TREATMENT	EcoSquare ®, Reinforced Recycled Backing
TUFTING GAUGE	1/12 inch	STAIN AND SOIL PROTECTION	Stain and Soil Protection
PILE HEIGHT	2.5 - 5.0 mm.	TILE SIZE	50 x 50 cm., 25 x 100 cm.
TOTAL CARPET WEIGHT	2,895 gm/sq.m. for EcoSoft 4,010 gm/sq.m. for EcoSquare	BACKING OPTIONS AND SIZE	Contact your sales representative for information

Specifications are subject to normal manufacturing tolerances, and subject to change without prior notice.
As in all quality carpets, colors are subject to dye lot variations.




Nevoa
Blackout NV 01
Rain NV 05
Vapour NV 08


Nevoa  Stock Keeping Unit

* Available from May 1st 2020




Blackout
NV 01 




Storm
NV 02 




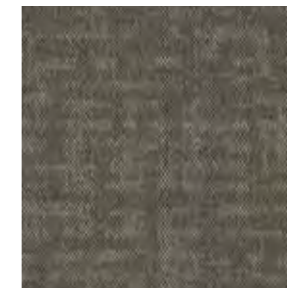
Fog
NV 03 




Haze
NV 04 

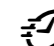


Rain
NV 05 



Drizzle
NV 06 



Dew
NV 07 



Vapour
NV 08 

CARPET TILE SPECIFICATIONS

CONSTRUCTION	Multi Level Texture Tufted
PILE FIBER	100% Solution Dyed Nylon
TUFTING GAUGE	1/12 inch
PILE HEIGHT	3.0 - 5.5 mm.
TOTAL CARPET WEIGHT	2,962 gm/sq.m. for EcoSoft 4,077 gm/sq.m. for EcoSquare

BACKING STRUCTURE	 EcoSoft , Recycled Cushion Backing  EcoSquare , Reinforced Recycled Backing
PILE TREATMENT	Stain and Soil Protection
TILE SIZE	50 x 50 cm.
BACKING OPTIONS AND SIZE	Contact your sales representative for information

Specifications are subject to normal manufacturing tolerances, and subject to change without prior notice.
As in all quality carpets, colors are subject to dye lot variations.



Tavola
Verdone TA 04
Macchiato TA 08

credit: Belmadar Office

Tavola  Stock Keeping Unit



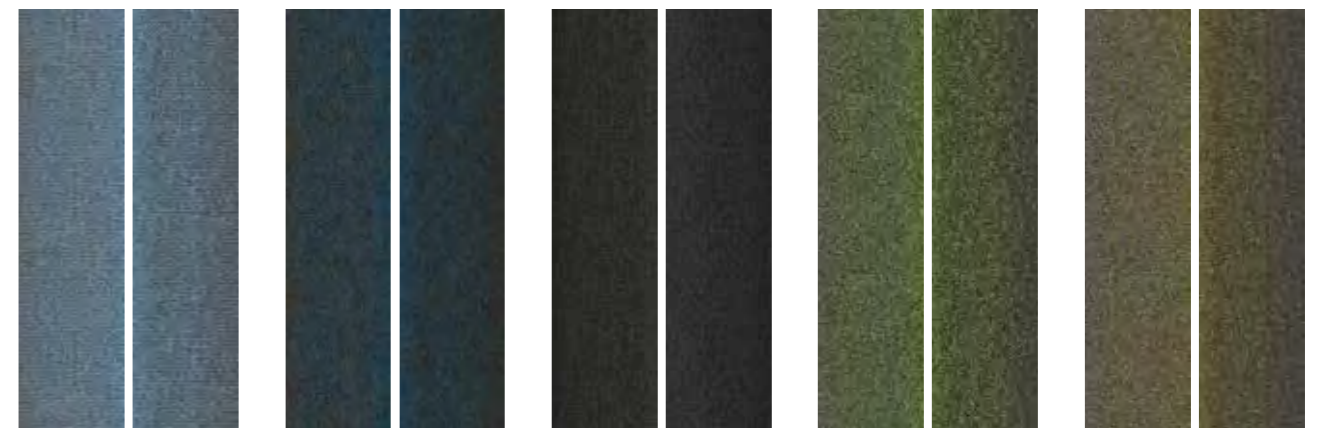
Nebbia
TA 11

Bruma
TA 07


Macchiato 
TA 08


Carbone
TA 09

Grigio 
TA 12



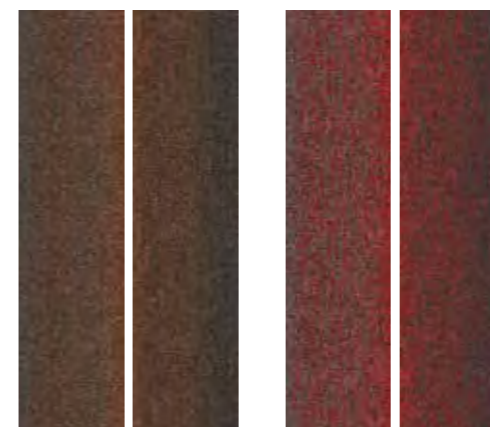
Azzurro 
TA 10

Blu 
TA 05

Nero 
TA 06

Verdone
TA 04

Dorato
TA 01



Arancio
TA 02

Rosso
TA 03

CARPET TILE SPECIFICATIONS

CONSTRUCTION	Multi Level Texture Tufted
PILE FIBER	100% Solution Dyed Nylon
TUFTING GAUGE	1/12 inch
PILE HEIGHT	3.0 - 5.0 mm.
TOTAL CARPET WEIGHT	3,064 gm/sq.m. for EcoSoft 4,179 gm/sq.m. for EcoSquare

BACKING STRUCTURE	EcoSoft , Recycled Cushion Backing EcoSquare , Reinforced Recycled Backing
PILE TREATMENT	Stain and Soil Protection
TILE SIZE	50 x 50 cm., 25 x 100 cm.
BACKING OPTIONS AND SIZE	Contact your sales representative for information


Specifications are subject to normal manufacturing tolerances, and subject to change without prior notice.
As in all quality carpets, colors are subject to dye lot variations.

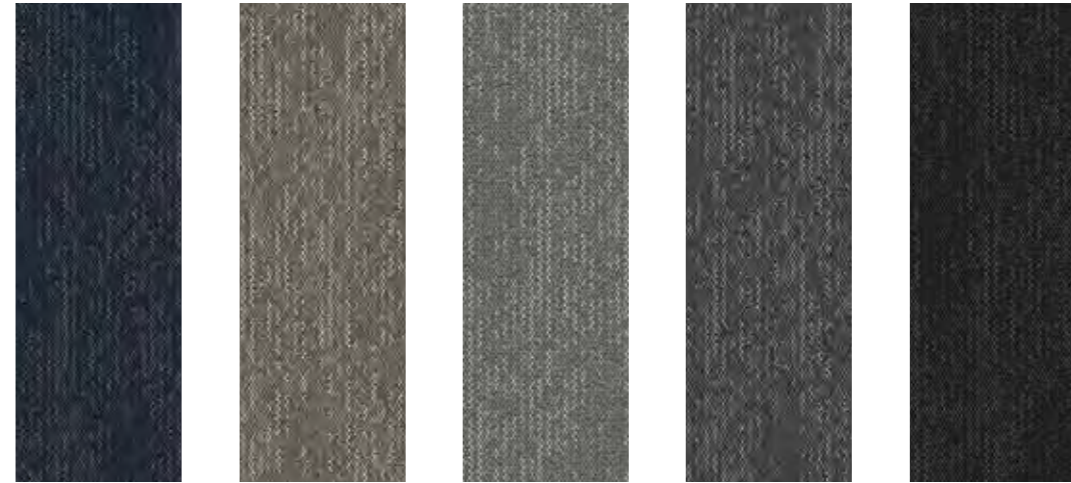


Upstream - Ebb
Spring EB 01
River EB 03

Modular Carpet
Collection Portfolio 2020


Carpets Inter®

Upstream - Ebb  Stock Keeping Unit



Spring EB 01  Creek EB 02  River EB 03  Estuary EB 04  Ocean EB 05 

CARPET TILE SPECIFICATIONS

CONSTRUCTION	Multi Level Texture Tufted	BACKING STRUCTURE	 EcoSoft®, Recycled Cushion Backing
PILE FIBER	100% Solution Dyed Nylon	PILE TREATMENT	Stain and Soil Protection
TUFTING GAUGE	1/12 inch	TILE SIZE	25 x 100 cm.
PILE HEIGHT	3.0 - 5.0 mm.	BACKING OPTIONS AND SIZE	Contact your sales representative for information
TOTAL CARPET WEIGHT	2,820 gm/sq.m. for EcoSoft		


Specifications are subject to normal manufacturing tolerances, and subject to change without prior notice. As in all quality carpets, colors are subject to dye lot variations.




Upstream - Flow
Tide FW 04
Drift FW 05

Upstream - Flow  Stock Keeping Unit



Ripple FW 01  Backwash FW 02  Wake FW 03  Tide FW 04  Drift FW 05 

CARPET TILE SPECIFICATIONS

CONSTRUCTION	Multi Level Texture Tufted	BACKING STRUCTURE	 EcoSoft®, Recycled Cushion Backing
PILE FIBER	100% Solution Dyed Nylon	PILE TREATMENT	Stain and Soil Protection
TUFTING GAUGE	1/12 inch	TILE SIZE	25 x 100 cm.
PILE HEIGHT	3.0 - 5.0 mm.	BACKING OPTIONS AND SIZE	Contact your sales representative for information
TOTAL CARPET WEIGHT	2,793 gm/sq.m. for EcoSoft		

Specifications are subject to normal manufacturing tolerances, and subject to change without prior notice. As in all quality carpets, colors are subject to dye lot variations.



EBB - River Wash



River
EB 03



River
Azure
EB 31



River
Emerald
EB 32



River
Sand
EB 33



River
Sunset
EB 34

- EBB - River Wash**
- River Azure EB 31
 - River Emerald EB 32
 - River Sand EB 33
 - River Sunset EB 34

CARPET TILE SPECIFICATIONS

CONSTRUCTION	Multi Level Texture Tufted
PILE FIBER	100% Solution Dyed Nylon
TUFTING GAUGE	1/12 inch
PILE HEIGHT	3.0 - 5.0 mm.
TOTAL CARPET WEIGHT	2,820 gm/sq.m. for EcoSoft

BACKING STRUCTURE	EcoSoft ®, Recycled Cushion Backing
PILE TREATMENT	Stain and Soil Protection
TILE SIZE	25 x 100 cm.
BACKING OPTIONS AND SIZE	Contact your sales representative for information

Specifications are subject to normal manufacturing tolerances, and subject to change without prior notice. As in all quality carpets, colors are subject to dye lot variations.



EBB - Estuary Wash



Estuary
EB 04



Estuary
Azure
EB 41



Estuary
Emerald
EB 42



Estuary
Sand
EB 43



Estuary
Sunset
EB 44

EBB - Estuary Wash
Estuary Emerald EB 42

Flatlands
Sapo FL 10

CARPET TILE SPECIFICATIONS

CONSTRUCTION	Multi Level Texture Tufted
PILE FIBER	100% Solution Dyed Nylon
TUFTING GAUGE	1/12 inch
PILE HEIGHT	3.0 - 5.0 mm.
TOTAL CARPET WEIGHT	2,820 gm/sq.m. for EcoSoft

BACKING STRUCTURE	EcoSoft ®, Recycled Cushion Backing
PILE TREATMENT	Stain and Soil Protection
TILE SIZE	25 x 100 cm.
BACKING OPTIONS AND SIZE	Contact your sales representative for information


Specifications are subject to normal manufacturing tolerances, and subject to change without prior notice.
As in all quality carpets, colors are subject to dye lot variations.

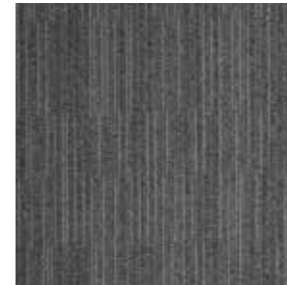
An aerial, high-angle photograph of a modern transit station. The image shows multiple levels of walkways and escalators. The walkways are bordered by metal railings and have a perforated metal mesh floor. The escalators are also visible, with their metal frames and steps. The overall design is clean and functional, with a focus on efficient use of space. The lighting is bright, highlighting the architectural details.


Linear Portfolio





Sanskrit Plus II  Stock Keeping Unit




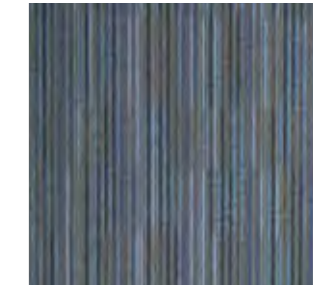
Ashta
SK 08 




Dasa
SK 10 




Chaturdasha
SK 14 



Panchadasha
SK 15 



Shodash
SK 16 

Sanskrit Plus II
Ashta SK 08
Shodash SK 16

CARPET TILE SPECIFICATIONS

CONSTRUCTION	Multi Level Texture Tufted	BACKING STRUCTURE	EcoSoft , Recycled Cushion Backing
PILE FIBER	100% Solution Dyed Nylon	PILE TREATMENT	EcoSquare , Reinforced Recycled Backing
TUFTING GAUGE	1/12 inch	TILE SIZE	50 x 50 cm.
PILE HEIGHT	4.0 mm.	BACKING OPTIONS AND SIZE	Contact your sales representative for information
TOTAL CARPET WEIGHT	2,962 gm/sq.m. for EcoSoft 4,077 gm/sq.m. for EcoSquare		

Specifications are subject to normal manufacturing tolerances, and subject to change without prior notice.
As in all quality carpets, colors are subject to dye lot variations.



Vila Rica
Tavira VR 05
Fatima VR 06

Vila Rica  Stock Keeping Unit



CARPET TILE SPECIFICATIONS

CONSTRUCTION	Multi Level Texture Tufted	BACKING STRUCTURE	EcoSoft , Recycled Cushion Backing
PILE FIBER	100% Solution Dyed Nylon	PILE TREATMENT	EcoSquare , Reinforced Recycled Backing
TUFTING GAUGE	1/12 inch	TILE SIZE	25 x 100 cm.
PILE HEIGHT	3.0 - 5.5 mm.	BACKING OPTIONS AND SIZE	Contact your sales representative for information
TOTAL CARPET WEIGHT	3,000 gm/sq.m. for EcoSoft 4,115 gm/sq.m. for EcoSquare		


Specifications are subject to normal manufacturing tolerances, and subject to change without prior notice.
As in all quality carpets, colors are subject to dye lot variations.

Zipline  Stock Keeping Unit




Meld
SZ 01 

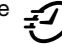


Fusion
SZ 02 



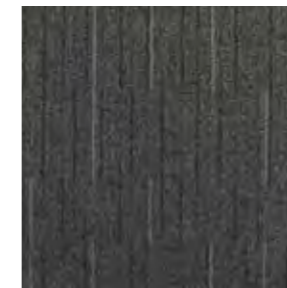
Blend
SZ 03 




Mixture
SZ 04 



Alloy
SZ 05 



Compound
SZ 06 



CARPET TILE SPECIFICATIONS

CONSTRUCTION	Multi Level Texture Tufted
PILE FIBER	100% Solution Dyed Nylon
TUFTING GAUGE	1/12 inch
PILE HEIGHT	3.0 - 5.0 mm.
TOTAL CARPET WEIGHT	2,974 gm/sq.m. for EcoSoft 3,989 gm/sq.m. for EcoSquare

BACKING STRUCTURE	EcoSoft , Recycled Cushion Backing EcoSquare , Reinforced Recycled Backing
PILE TREATMENT	Stain and Soil Protection
TILE SIZE	50 x 50 cm.
BACKING OPTIONS AND SIZE	Contact your sales representative for information

Specifications are subject to normal manufacturing tolerances, and subject to change without prior notice.
As in all quality carpets, colors are subject to dye lot variations.



Monotone Portfolio





Color Symphony
Opera SM 14

credit: Merit Interiors

Color Symphony



Pitch SM 01	Echo SM 02	Octave SM 03	Adagio SM 04
Treble SM 05	Major SM 06	Volume SM 07	Intermezzo SM 08
Key SM 09	Solo SM 10	Etude SM 11	Sonata SM 12
Sharp SM 13	Opera SM 14	Bar SM 15	

CARPET TILE SPECIFICATIONS

CONSTRUCTION	Multi Level Texture Tufted	BACKING STRUCTURE	EcoSoft®, Recycled Cushion Backing
PILE FIBER	100% Solution Dyed Nylon	PILE TREATMENT	EcoSquare®, Reinforced Recycled Backing
TUFTING GAUGE	1/12 inch	TILE SIZE	50 x 50 cm.
PILE HEIGHT	3.0 - 5.0 mm.	BACKING OPTIONS AND SIZE	Contact your sales representative for information
TOTAL CARPET WEIGHT	3,064 gm/sq.m. for EcoSoft® 4,179 gm/sq.m. for EcoSquare®		


Specifications are subject to normal manufacturing tolerances, and subject to change without prior notice. As in all quality carpets, colors are subject to dye lot variations.

Visibility of Carpet Tile Seams in Solid or Near-Solid Tiles. Please refer Installation Method & Disclaimer at the back of the brochure.



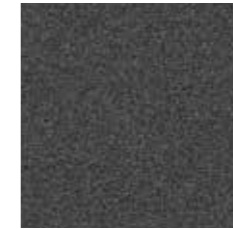
Flatlands  Stock Keeping Unit




Harrat
FL 23 




Akanda
FL 06 



Omo
FL 04 



Ruma
FL 09 




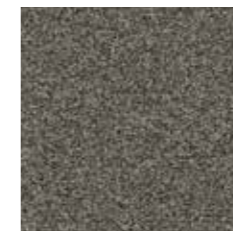
Arusha
FL 03 



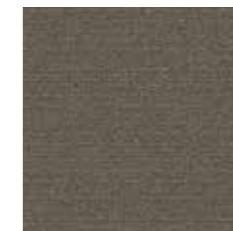
Gola
FL 01 

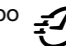


Banco
FL 14 



Taza
FL 08 




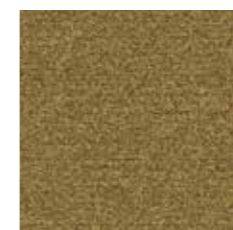
Campo
FL 07 



Karoo
FL 18 




Mana
FL 17 




Lantoto
FL 11 



Fogo
FL 12 



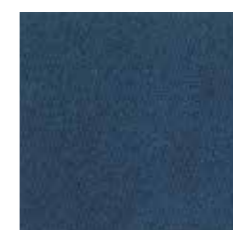
Kedu
FL 22 




Kantavi
FL 21 

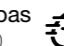


Caroni
FL 19 

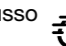


Matobo
FL 15 



Pampas
FL 20 



Mucusso
FL 02 



Katavi
FL 16 



Sapo
FL 10 

CARPET TILE SPECIFICATIONS

CONSTRUCTION	Multi Level Texture Tufted	BACKING STRUCTURE	EcoSoft ®, Recycled Cushion Backing
PILE FIBER	100% Solution Dyed Nylon	PILE TREATMENT	EcoSquare ®, Reinforced Recycled Backing
TUFTING GAUGE	1/10 inch	TILE SIZE	50 x 50 cm., 25 x 100 cm.
PILE HEIGHT	3.0 - 4.0 mm.	BACKING OPTIONS AND SIZE	Contact your sales representative for information
TOTAL CARPET WEIGHT	2,880 gm/sq.m. for EcoSoft 3,995 gm/sq.m. for EcoSquare		

Specifications are subject to normal manufacturing tolerances, and subject to change without prior notice.
As in all quality carpets, colors are subject to dye lot variations.

Visibility of Carpet Tile Seams in Solid or Near-Solid Tiles. Please refer Installation Method & Disclaimer at the back of the brochure.


Polypropylene Portfolio





Artline III  Stock Keeping Unit




Silverpoint
AR 14 




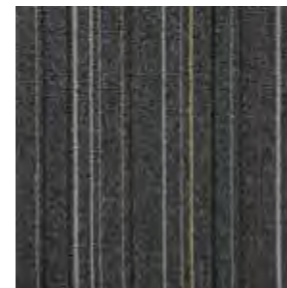
Beige Chalk
AR 15 



Canvas Brush
AR 16 



Ink Pen
AR 17 



Graphite
AR 18 



Blackboard
AR 19 

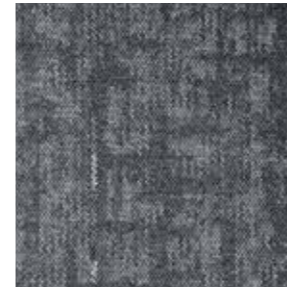
CARPET TILE SPECIFICATIONS


CONSTRUCTION	Texture Tufted Loop Pile
PILE FIBER	100% Solution Dyed Polypropylene
TUFTING GAUGE	1/10 inch
PILE HEIGHT	4.0 mm.
TOTAL CARPET WEIGHT	3,930 gm/sq.m. for EcoSquare

BACKING STRUCTURE	EcoSquare Reinforced Recycled Backing
TILE SIZE	50 x 50 cm.
BACKING OPTIONS AND SIZE	Contact your sales representative for information




Hydra  Stock Keeping Unit

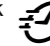


Nimbus
HY 01 




Blue Moon
HY 02 



Planet Rock
HY 03 



Red Star
HY 04 

CARPET TILE SPECIFICATIONS

CONSTRUCTION	Tufted Multi-Level Loop
PILE FIBER	100% Solution Dyed Polypropylene
TUFTING GAUGE	1/12 inch
PILE HEIGHT	3.5 - 5.0 mm.
TOTAL CARPET WEIGHT	4,145 gm/sq.m. for EcoSquare

BACKING STRUCTURE	EcoSquare ® Reinforced Recycled Backing
TILE SIZE	50 x 50 cm.
BACKING OPTIONS AND SIZE	Contact your sales representative for information

Specifications are subject to normal manufacturing tolerances, and subject to change without prior notice.
As in all quality carpets, colors are subject to dye lot variations.




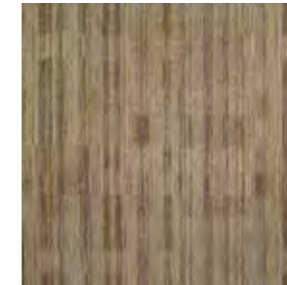
Mezzanine
Highrise UM 06


Penthouse Plus II
Rooftop PH 02
Top Floor PH 06

Mezzanine  *Stock Keeping Unit*



Crosswalk 
UM 02




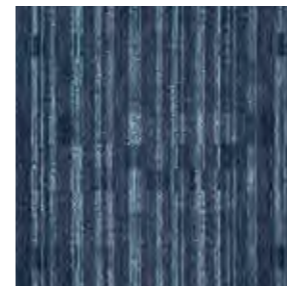
Taxicab 
UM 04




Highrise 
UM 06



Condo 
UM 07



Graffiti 
UM 08

CARPET TILE SPECIFICATIONS


CONSTRUCTION	Tufted Multi-Level Loop	BACKING STRUCTURE	EcoSquare ® Reinforced Recycled Backing
PILE FIBER	100% Solution Dyed Polypropylene	TILE SIZE	50 x 50 cm.
TUFTING GAUGE	1/10 inch	BACKING OPTIONS AND SIZE	Contact your sales representative for information
PILE HEIGHT	3.0 - 5.0 mm.		
TOTAL CARPET WEIGHT	4,179 gm/sq.m. for EcoSquare ®		

Specifications are subject to normal manufacturing tolerances, and subject to change without prior notice.
As in all quality carpets, colors are subject to dye lot variations.

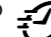


Penthouse Plus II  Stock Keeping Unit

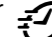


Condo
PH 01 



Rooftop
PH 02 




Top Floor
PH 06 




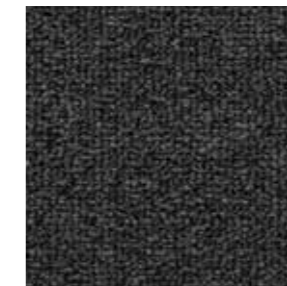
Loft
PH 07 

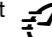


Co-Op
PH 09 



Duplex
PH 14 



Viewpoint
PH 15 

Penthouse Plus II
Condo PH 01
Rooftop PH 02
Top Floor PH 06
Co-Op PH 09

CARPET TILE SPECIFICATIONS

CONSTRUCTION	Tufted Level Loop Pile
PILE FIBER	100% Solution Dyed Polypropylene
TUFTING GAUGE	1/10 inch
PILE HEIGHT	4.0 mm. (+/- 0.5 mm.)
TOTAL CARPET WEIGHT	3,930 gm/sq.m. for EcoSquare

BACKING STRUCTURE	EcoSquare ® Reinforced Recycled Backing
TILE SIZE	50 x 50 cm.
BACKING OPTIONS AND SIZE	Contact your sales representative for information

Specifications are subject to normal manufacturing tolerances, and subject to change without prior notice. As in all quality carpets, colors are subject to dye lot variations.

Turn your vision into reality by using our unique 2D On-line 'Mix & Match' Simulator.

At Carpets Inter we make it easy to design your custom modular floor. For this purpose we are pleased to provide you with our easy to use 2D On-line 'Mix & Match' Simulator.

The 2D On-line Simulator app contains all current modular tile collections and enables easy selection of styles and configurations to be placed into any of eight optional spaces.

You can visually experience our comprehensive carpet tile catalogue. Automatically updated by our inhouse design team, this app ensures that you are up-to-date on our latest offerings. Create your own floor design with Mix and Match concept. Download the screen shot to include in your presentation to your Client. Provide us with your project CAD floor plan for a 2D Pattern Flood-in.

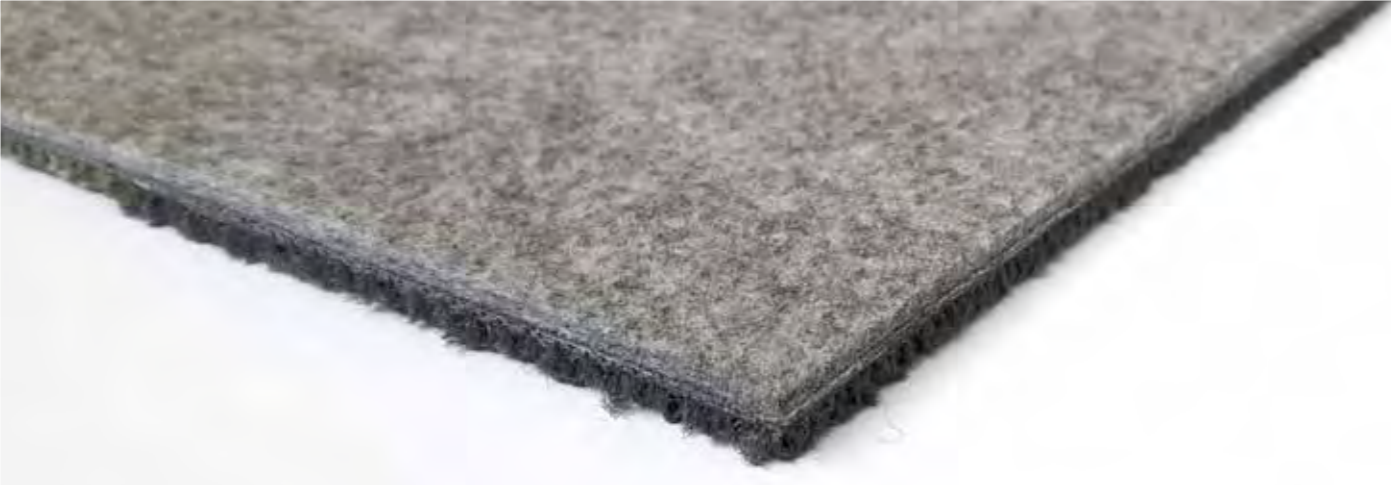


In addition to the above we have also developed another app which is more comprehensive and advanced tool called 3D Virtual Simulator. The simulator also allows custom tile shapes and dimensions for unique configurations. Once the style and configuration is determined, you may view it installed and take a virtual walk through the selected space to visually experience your creation from all angles and ensure perfect coordination. The app is available for download in our website (www.carpetsinter.com). Should you need further information or just "inspiration", your Carpets Inter representative will be pleased to show you our full range of products and services.

High Performance Backing

Carpets Inter provide two unique modular carpet backing options in EcoSoft (felt back) and EcoSquare (resilient back). Unless stated all stock keeping unit (SKU) is available in EcoSquare back. For alternative backing choice, please consult your local Carpet International distributor or CI sales representative.

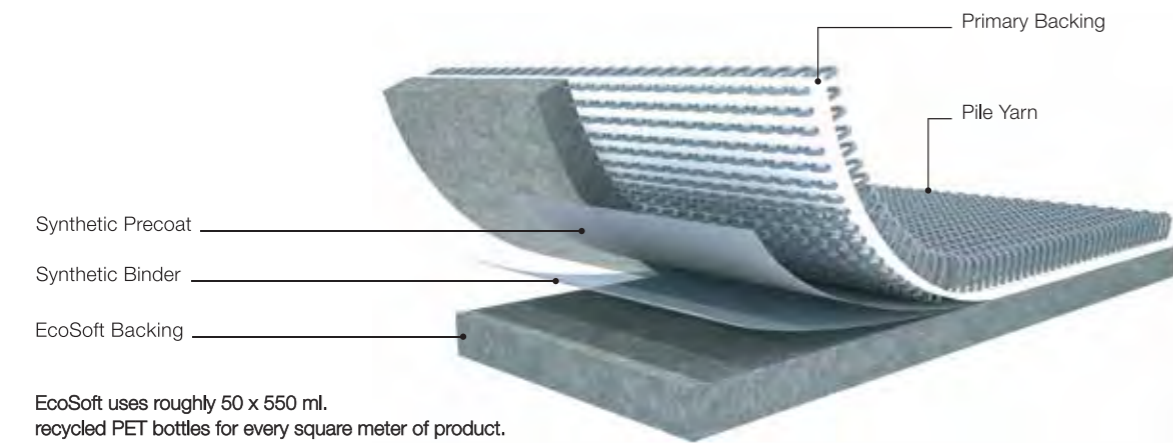




EcoSoft®

Sustainable Performance and Value

EcoSoft® is made from 80% post-consumer material reengineered from millions of discarded drinking water bottles, plus 5 to 10% post-industrial recycled PET. This environmentally friendly backing not only meets all the stringent performance criteria required for modular carpet, but consistently outperforms conventional PVC and bitumen hard back, as well as urethane cushion back in terms of durability, underfoot comfort, acoustical propensity and indoor air quality.

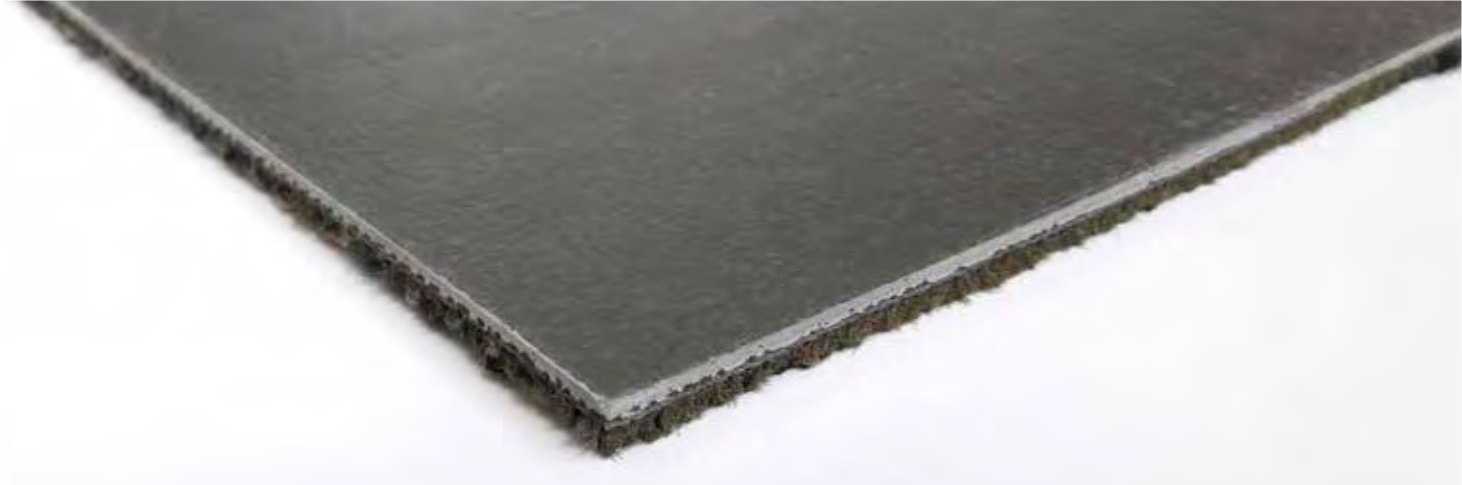


EcoSoft uses roughly 50 x 550 ml. recycled PET bottles for every square meter of product.

EcoSoft® Outstanding Features

- > 85% recycled content backing
- > 100% recyclable
- > No PVC, Bitumen or Fiberglass content
- > Suitable for installation onto wet slab up to 99% RH
- > Superior Acoustical Propensity - outperforms hardback by 150% to 175% per Green Star IEQ10 internal noise level requirements
- > Excellent Dimensional Stability BS EN 986 less than 0.15%
- > Cushioning reduces wear and tear, fiber crush and user fatigue
- > EcoSoft® backed modular carpet product contributes up to 6 LEED points

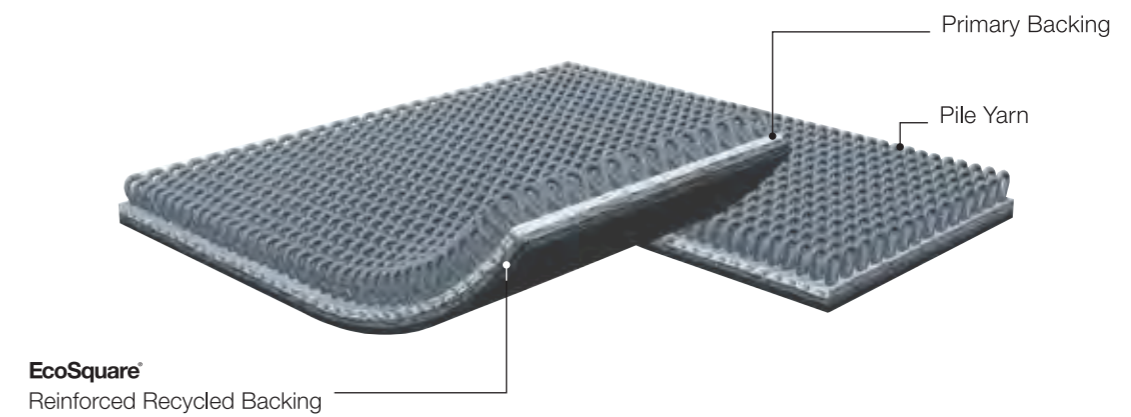
In view of the superior properties outlined above, modular carpet with EcoSoft® backing is the ideal choice for Education facilities.



EcoSquare®

Sustainable Performance and Value

EcoSquare® is another step in Carpet Inter's ongoing Sustainability and Reclamation program, repurposing waste material into a recycled high performance modular carpet backing.



EcoSquare® Outstanding Features

- > 63.5% recycled content backing
- > 100% recyclable
- > Meets Greenstar best practice guidelines
- > Free of toxic plasticisers and stabilisers
- > Excellent Dimensional Stability BS EN 986 less than 0.15%
- > EcoSquare® backed modular carpet product contributes up to 5 LEED points

In view of the superior properties outlined above, modular carpet with EcoSquare® backing is the ideal choice for Education facilities.



**We will
RECYCLE OVER
1,000,000,000
discarded
PLASTIC BOTTLES
by 2025**

**SUSTAINABILITY
CAMPAIGN 2020**

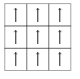
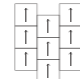
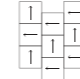
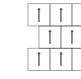
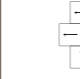


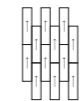
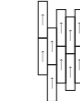
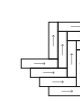



To date EcoSoft® has recycled over 746 million PET bottles from polluting our planet... Be a part of this mission!

At Carpets Inter, we make high-quality modular carpet products to enhance people's lives. This commitment goes beyond providing a product that is safe, comfortable, and well designed. It extends to fostering humane, safe, and ethical workplace conditions in every facet of our multinational business, while promoting those same values – and a greater commitment to social awareness – wherever our brand is present. We base this promise on the underlying principle that the truest value of a company should be judged not only by its product or its profit, but ultimately, by its social benefit to people.

Installation Summary



		STANDARD SQUARE SIZE INSTALLATION METHOD							STANDARD PLANK SIZE INSTALLATION METHOD			
		 Monolithic	 Vertical Brick	 Vertical Stair Step	 Horizontal Brick	 Horizontal Stair Step	 Checkerboard	 Random	 Vertical Brick	 Random Vertical Brick	 Herringbone	 Double Herringbone
Pattern	Annex			●		●	●	●				
	Beton								●	●		
	Breaking Waves - Across the Sea						●		●	●	●	
	Breaking Waves - Over the Ocean				●		●		●	●	●	●
	Croplands - Roots			●	●	●	●		●	●		
	Croplands - Organic			●	●	●	●		●	●		
	Headlands - Peaks								●	●		
	Headlands - Edge								●	●		
	Headlands - Pathways								●	●		
	Hydra	●	●		●		●					
Textural	Apex II	●	●		●		●					
	Breaking Ground - Mesa				●		●		●	●		
	Nevoa	●	●		●		●					
	Tavola								●	●	●	
	Upstream - Ebb & Flow								●	●		
	EBB - River Wash								●	●		
	EBB - Estuary Wash								●	●		
	Mezzanine			●		●	●					
Linear	Sanskrit Plus II			●	●	●	●					
	Vila Rica								●	●		
	Zipline	●	●	●	●	●	●					
	Artline III			●	●	●	●					
Monotone	Color Symphony						●					
	Flatlands						●					
	Penthouse Plus II	●	●	●	●	●	●					

Visibility of Carpet Tile Seams in Solid or Near-Solid Color Tiles - Disclaimer It is expected that the seams of solid and near-solid carpet tiles will be visible. This is not considered or accepted as a product defect because it is due to the inherent characteristic of a distinct object (the tile in this case) in a solid color. It is what you see in any flooring material that is modular such as wood planks and ceramic tiles. For Solid or Near-Solid color tiles, we recommend a quarter-turn installation for square tiles and a herringbone installation for plank tiles. These installed configurations create a subtle texture on the floor by utilizing the visibility of the seams. If you prefer a carpet tile that masks most seams, select a product that has a multicolor pattern or texture that can minimize the visibility of tile seams in most applications. Please consult with your Carpets Inter rep for further guidance.

Carpets Inter®

Headquarters

2054 New Petchburi Road
Bangkapi, Huaykwang, Bangkok 10310 Thailand
Tel +66 (0) 2314-5402, Fax +66 (0) 2318-3537
www.carpetsinter.com, info@carpetsinter.com
© Carpets Inter 2020

