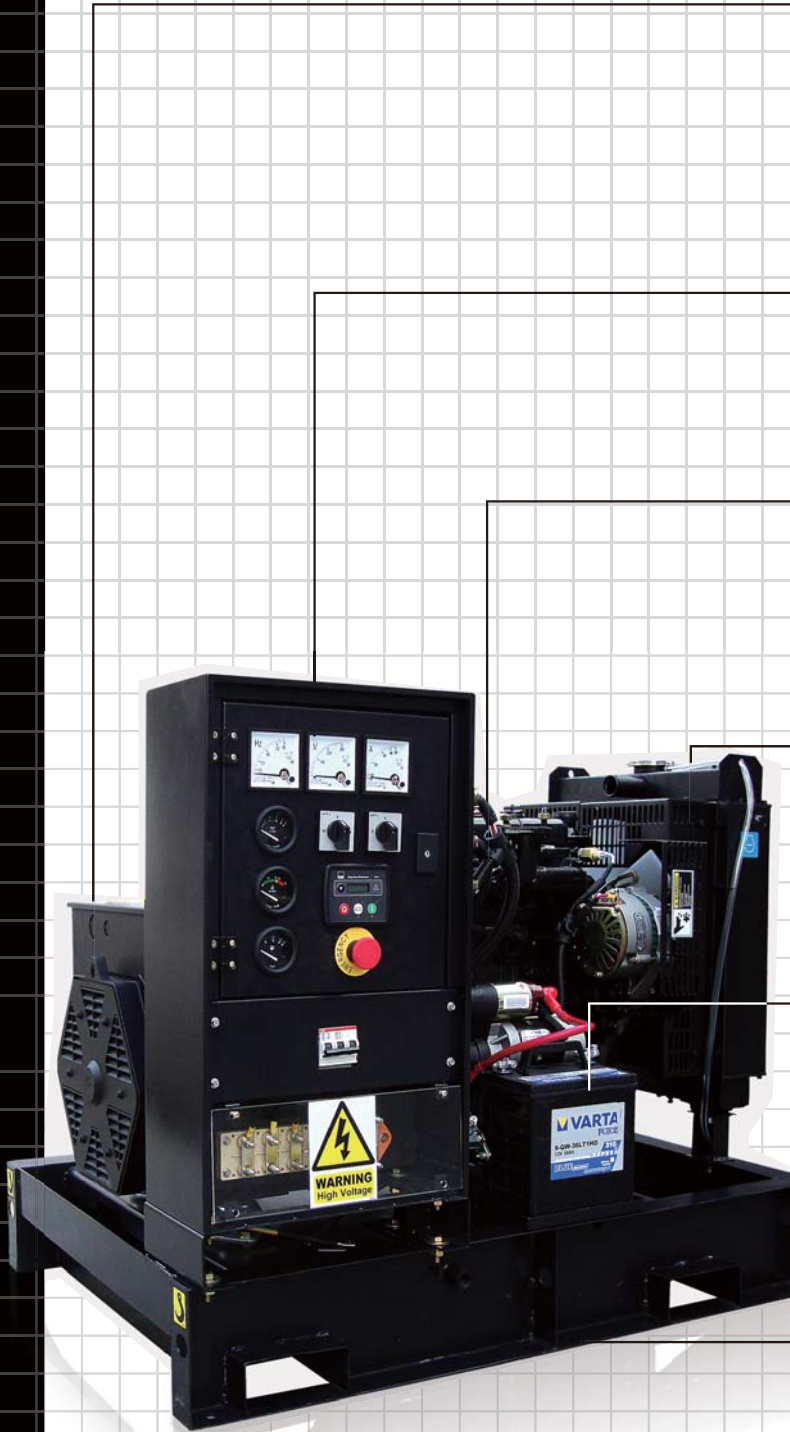


iTC Power
empower your business

Power Generator
50Hz 8-145kVA





OPEN FRAME GENERATOR CONFIGURATOR

ALTERNATOR

ITC Power alternator as standard provides 2 years warranty
Stamford or LEROY SOMER alternator as options

CONTROL BOX

Control panel & AC power output (10-265kVA)

DIESEL ENGINE

3 cylinders engine (10-15kVA)
4 cylinders engine (16-95kVA)
6 cylinders engine (109-170kVA)

RADIATOR

40°C radiator as standard
50°C radiator as optional to High temperature weather area

BATTERY

High-powered battery release high current for easy starting.
Low temperature battery as optional when environment temperature lower than 0

BASE FRAME

Forklift holes designed for easy moving

BOTTOM TANK

Ensures over 8 hours engine running

SOUNDPROOF & RAINPROOF CANOPY



3 CYLINDERS

3 Phase@10-14 kVA

1 Phase@8.8-11 kVA



4 CYLINDERS

3 Phase@16-90 kVA

1 Phase@12-35.2 kVA



6 CYLINDERS

3 Phase@99-145 kVA

ITC Power

SOUNDPROOF CANOPY GENERATOR

ITC Power Diesel Generator Series

Specification Datas

Generator Model		50Hz 3Phase				Engine Type	Alternator Type
Open Frame	Soundproof Canopy	Prime Power		Standby Power			
		KW	KVA	KW	KVA		
DG11KE	DG11KSE	8	10	9	11	D380	164B
DG14KE	DG14KSE	10	13	11	14	D390	164C
DG16KE	DG16KSE	12	15	13	17	D485	164D
DG22KE	DG22KSE	16	20	18	22	D490	184E
DG28KE	DG28KSE	20	25	22	28	D4102	184F
DG34KE	DG34KSE	25	31	28	34	D4102	184G
DG45KE	DG45KSE	32	40	35	44	D4105	184J
DG65KE*	DG65KSE*	48	60	53	66	D4D85Z-D20	224E
DG75KE*	DG75KSE*	53	66	58	72	D4D90Z-D20	224F
DG90KE*	DG90KSE*	66	82	72	90	D4M3L-D	224G
DG110KE*	DG110KSE*	79	99	87	109	D6B135Z-D20	274C
DG125KE*	DG125KSE*	90	112	99	125	D6B155L-D21	274D
DG145KE*	DG145KSE*	106	132	116	145	D6B180L-D20	274E

Generator Model		50Hz 1Phase				Engine Type	Alternator Type
Open Frame	Soundproof Canopy	Prime Power		Standby Power			
		KW	KVA	KW	KVA		
DG9KEm	DG9KSEm	8	8	8.8	8.8	D380	164B
DG11KEm	DG11KSEm	10	10	11	11	D390	164C
DG13KEm	DG13KSEm	12	12	13	13	D485	164D
DG18KEm	DG18KSEm	16	16	18	18	D490	184E
DG22KEm	DG22KSEm	20	20	22	22	D4102	184F
DG28KEm	DG28KSEm	25	25	28	28	D4102	184H
DG35KEm	DG35KSEm	32	32	35	35	D4105	224D

Note

1. Prime Power :

Continuous running at variable load for unlimited periods with 10% overload available for 1 hour in any 12 hours period. In accordance with ISO8528, ISO 3046, BS 5514.
Contact us for the other running periods. Power ratings based on a 40°C (104 °F) ambient temperature reference.

2. Standby Power :

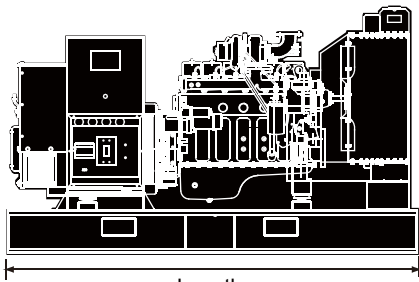
Continuous running at variable load for an emergency. No overload is permitted on these ratings. In accordance with ISO 3046, BS 5514.

DG ITC Power Diesel generator
KE Open frame and Bottom tank
KSE Soundproof canopy and Bottom tank
m Single phase
* Electrical Governor Engine

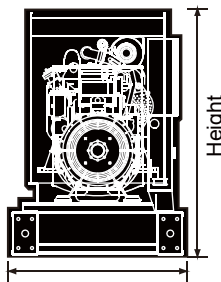
3. Generator sets when running in special voltage, the real power will change. The detail generator sets technical datasheets you should connect to our company.

DIMENSIONS & WEIGHTS

OPEN FRAME



Length

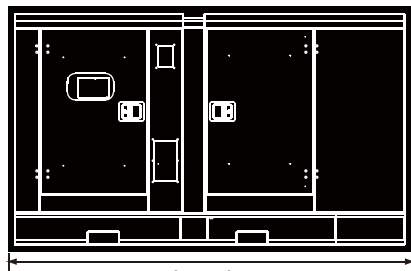


Width

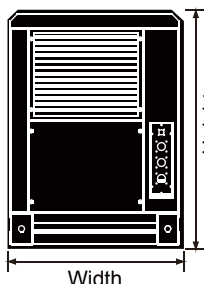
Height

Generator Model	Net Weight (Kg)	Dimension (mm)			Sound Level (Lwa)		Fuel Tank Capacity (L)
		Length	Width	Height	@1m	@7m	
DG11KE / 9KEm	365	1150	780	910	90	80	42
DG14KE / 11KEm	480	1510	900	980	92	82	46
DG16KE / 13KEm	490	1510	900	980	92	82	77.5
DG22KE / 18KEm	505	1510	900	980	92	82	77.5
DG28KE / 22KEm	650	1810	950	1020	92	82	93
DG34KE / 28KEm	690	1810	950	1020	92	82	93
DG45KE / 35KEm	770	1810	950	1020	94	84	93
DG65KE	950	1955	950	1360	94	84	180
DG75KE	995	1955	950	1365	98	88	180
DG90KE	1100	2395	1000	1410	98	88	245
DG110KE	1160	2395	1000	1410	98	88	245
DG125KE	1220	2395	1000	1410	98	88	245
DG145KE	1280	2395	1000	1410	98	88	245

SOUNDPROOF CANOPY



Length



Width

Height

Generator Model	Net Weight (Kg)	Dimension (mm)			Sound Level (Lwa)		Fuel Tank Capacity (L)
		Length	Width	Height	@1m	@7m	
DG11KSE / 9KSEm	480	1500	760	1090	68	62	42
DG14KSE / 11KSEm	655	1630	760	1115	69	64	46
DG16KSE / 12KSEm	760	1900	900	1120	70	65	77.5
DG22KSE / 18KSEm	786	1900	900	1120	70	65	77.5
DG28KSE / 22KSEm	870	2200	950	1250	72	66	93
DG34KSE / 28KSEm	1000	2200	950	1250	72	66	93
DG45KSE / 35KSEm	1045	2200	950	1320	72	66	93
DG65KSE	1160	2500	950	1520	73	68	180
DG75KSE	1200	2500	950	1520	73	68	180
DG90KSE	1460	3200	1000	1700	75	70	245
DG110KSE	1520	3200	1000	1700	75	70	245
DG125KSE	1580	3200	1050	1760	75	70	245
DG145KSE	1640	3200	1050	1760	75	70	245

Note

1. Fuel Tank :

Our company supply base frame with standard fuel tank ,this fuel tank capacity is use for generator running 8 hours on 100% load .

2. Sound level :

The generator running on 75% load ,and sound test accord to ISO8528-10 :1998 standard .

DIESEL ENGINE SPECIFICATION

iTcPower

iTcPower Diesel Engine

50Hz, 1500rpm, Prime Power 11~140KW



Specification Datas

Engine Model	Prime Power (kW)	Standby Power (kW)	Aspiration and Cooling	Displacement (L)	Cylinders	Bore x Stroke (mm)	Compression Ratio	Governor	Oil Cap.(L)	SAE Port	Coolant Cap. (L)	Fuel Consumption (L/100% Load)	Start System Voltage (V)	Battery Capacity (Ah)	Standard Cooling System
D880	11	12	Natural	1.4	3L	80x90	18:1	Mechanical	3.5	5/7.5	5.8	3.5	DC12V	60	40°C Radiator
D890	14	16	Natural	1.8	3L	90x95	18:1	Mechanical	3.5	5/7.5	5.8	4.5	DC12V	55	40°C Radiator
D485	17	19	Natural	2.2	4L	85x95	17.5:1	Mechanical	6	4/7.5	6	5	DC12V	55	40°C Radiator
D490	21	23	Natural	2.5	4L	90x100	17.5:1	Mechanical	6	4/7.5	10	6.4	DC12V	55	40°C Radiator
D4102	32	36	Natural	3.8	4L	102x105	17.5:1	Mechanical	7.5	3/10	10	9.0	DC12V	55	40°C Radiator
D4105	38	42	Natural	4.1	4L	105x105	17.5:1	Mechanical	9	3/11.5	10	11	DC12V	55	40°C Radiator
D4D85Z-D20	55	61	Turbocharging	4.2	4L	108X115	17.5:1	Electrical	11	3/11.5	12	16	DC24V	55x2	40°C Radiator
D4D90Z-D20	60	66	Turbocharging	4.2	4L	108X115	17.5:1	Electrical	11	3/11.5	12	18	DC24V	55x2	40°C Radiator
D4M3L-D	70	77	Turbocharging&IC	4.8	4L	85x100	17:1	Electrical	14	3/11.5	17.82	21.2	DC24V	55x2	40°C Radiator
D6B135Z-D20	90	99	Turbocharging&IC	6.87	6L	108X125	17.5:1	Electrical	20	2/11.5	24	24	DC24V	55x2	40°C Radiator
D6B155L-D21	103	113	Turbocharging&IC	6.87	6L	108X125	17.5:1	Electrical	24	2/11.5	24	28	DC24V	55x2	40°C Radiator
D6B180L-D20	120	132	Turbocharging&IC	6.87	6L	108X125	17.5:1	Electrical	24	2/11.5	24	28	DC24V	55x2	40°C Radiator

Specifications are subject to continuous product development

ALTERNATOR SPECIFICATION

*ITC*Power



*ITC*Power BRUSHLESS ALTERNATOR

50Hz,3-phase,1500rpm, Prime Power 11~125 KVA

Specification Datas

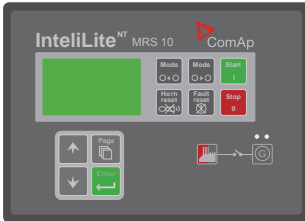
Model	3 Phase,1500 rpm, 50HZ			Single Phase,1500 rpm, 50HZ			AVR Type	Model	Bearing	Insulation System	Exciter System	Protection
	Voltage(V)	Prime Power (kVA)	Power Factor	Model	Voltage(V)	Prime Power (kVA)						
164B	230V/400V	11	0.8	164B	230V	7.4	1	SX440	Brushless	Class H	Self Excited	IP23
164C	230V/400V	14	0.8	164C	230V	9	1	SX460	Brushless	Class H	Self Excited	IP23
164D	230V/400V	16	0.8	164D	230V	10.8	1	SX460	Brushless	Class H	Self Excited	IP23
184E	230V/400V	23	0.8	184E	230V	15	1	SX460	Brushless	Class H	Self Excited	IP23
184F	230V/400V	28	0.8	184F	230V	18.5	1	SX460	Brushless	Class H	Self Excited	IP23
184G	230V/400V	31	0.8	-	-	-	-	SX460	Brushless	Class H	Self Excited	IP23
-	-	-	-	184H	230V	25	1	SX460	Brushless	Class H	Self Excited	IP23
184J	230V/400V	43	0.8	-	-	-	-	SX460	Brushless	Class H	Self Excited	IP23
-	-	-	-	224D	230V	35	1	SX460	Brushless	Class H	Self Excited	IP23
224F	230V/400V	60	0.8	-	-	-	-	SX460	Brushless	Class H	Self Excited	IP23
274C	230V/400V	100	0.8	-	-	-	-	SX460	Brushless	Class H	Self Excited	IP23
274D	230V/400V	125	0.8	-	-	-	-	SX460	Brushless	Class H	Self Excited	IP23
274E	230V/400V	140	0.8	-	-	-	-	SX460	Brushless	Class H	Self Excited	IP23

Specifications are subject to continuous product development



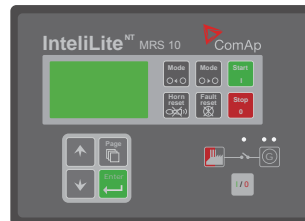
MRS 10 / MRS 16 Controller

MRS 10



MANUAL AND REMOTE START CONTROLLER

- ▷ 3 configurable analog inputs
- ▷ magnetic pickup input
- ▷ D+ preexcitation terminal
- ▷ 6 binary inputs
- ▷ 6 binary outputs



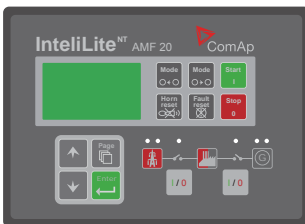
MRS 16

MANUAL AND REMOTE START CONTROLLER WITH SUPPORT FOR EFI ENGINES

- ▷ 3 configurable analog inputs
- ▷ magnetic pickup input
- ▷ D+ preexcitation terminal
- ▷ 6 binary inputs
- ▷ 6 binary outputs
- ▷ GCB control
- ▷ CAN with J1939 support
- ▷ extension modules capability
- ▷ event and performance log

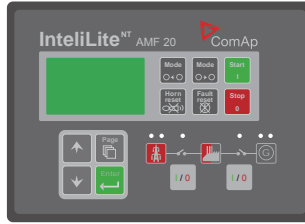
AMF 20 / AMF 25 Controller

AMF 20



AUTOMATIC MAINS FAILURE START CONTROLLER

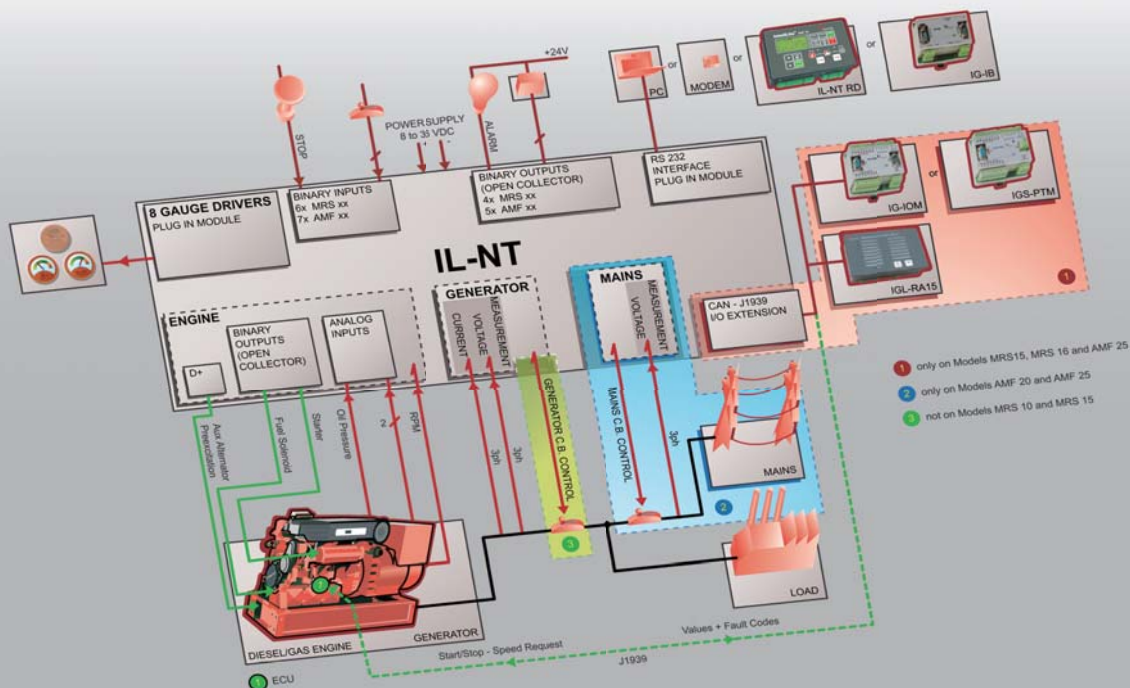
- ▷ 3 configurable analog inputs
- ▷ magnetic pickup input
- ▷ D+ preexcitation terminal
- ▷ 7 binary inputs
- ▷ 7 binary outputs
- ▷ GCB and MCB control



AMF 25

AUTOMATIC MAINS FAILURE START CONTROLLER WITH SUPPORT FOR EFI ENGINE

- ▷ 3 configurable analog inputs
- ▷ magnetic pickup input
- ▷ D+ preexcitation terminal
- ▷ 7 binary inputs
- ▷ 7 binary outputs
- ▷ GCB and MCB control
- ▷ CAN with J1939 support
- ▷ extension modules capability
- ▷ event and performance log



DSE3110 Controller



FEATURES

- Back-lit LCD display
- Remote start input
- Electronic engine enabled
- Magnetic pick-up
- Full engine monitoring and protection
- PC programmable
- Protected Solid State Outputs (PSS)
- 6 Digital Inputs
- 4 Outputs (4 configurable on Canbus version, 2 configurable on Magnetic Pick-up version)

BENEFITS

- ◆ Hours counter provides accurate information for monitoring maintenance and warranty periods
- ◆ Multiple engine parameters are monitored simultaneously
- ◆ Suitable for engine only applications
- ◆ Module can be configured to suit individual applications
- ◆ IP65/NEMA 12 rating offers advanced resistance to water ingress (optional gasket required)
- ◆ No need for additional metering equipment
- ◆ Wide range of engines can be specified
- ◆ Uses the DSE Configuration Suite PC Software for simplified programming

DSE7310 / 7320 Controller



The DSE7310 is an Automatic Start ControlModule and the DSE7320 is an AutoMains (Utility) Failure ControlModule. Both modules have been designed to start and stop diesel and gas generating sets that include electronic and non-electronic engines.

The DSE7320 includes the additional capability of being able to monitor a mains (utility) supply.

Both modules include USB, RS232 and RS485 ports as well as dedicated DSENet®

terminals for expansion device connectivity.

The modules are simple to operate and feature a newly designed menu layout for improved clarity. Enhanced features include a real time clock for enhanced event and performance monitoring, ethernet communications for low cost monitoring, mutual standby to reduce engine wear and tear, trend analysis to assist in the detection of patterns in engine status and preventative maintenance designed to detect if engine parts have developed fault conditions so they can be replaced before a major problem occurs.

CONTROL PANEL



OPERATION AREA

Conteol panel model standard:
Controller MRS10
Conteol panel model options:
Controller MRS16
Controller AMF20
Controller AMF25
Controller DSE7320



OPERATION AREA

Conteol panel model options:
P-3110 / Controller DSE3110
Voltage, Current, Frequency meters
Voltage, ampere switches
Battery charger,
water temperature, fuel level meters



BREAKER

Standard: MCB (0-125A), MCCB (125-1000A)
Options: MCB+RCD, MCCB+RCD



BREAKER

Standard: MCB (0-125A), MCCB (125-1000A)
Options: MCB+RCD, MCCB+RCD



POWER OUTPUT AREA

Terminals U.V.W.N.PE



POWER OUTPUT AREA

Terminals U.V.W.N.PE

	MODEL	MRS10	MRS16	AMF20	AMF25	DSE3110	DSE7320
Measurements ▼	Generator Current	●	●	●	●	●	●
	Generator Frequency	●	●	●	●	●	●
	Phase to Phase Voltage	●	●	●	●	●	●
	Phase to Neutral Voltage	●	●	●	●	○	●
	Generator KVAR	●	●	●	●	×	●
	Generator KW	●	●	●	●	×	●
	Generator KVA	●	●	●	●	×	●
	Generator Output KWh	×	●	×	●	×	×
	Power factor	●	●	●	●	×	●
	Mains Phase to Phase Volts	×	×	●	●	×	●
	Mains Phase to Neutral Volts	×	×	●	●	×	●
	Mains Frequency	×	×	●	●	×	●
	Controls ▼	Power Switch on	×	○	×	○	×
Fuelsolenoid valve control		●	●	●	●	●	●
Remote Start control		○	○	○	○	○	○
Oil Preheating		○	○	○	○	○	○
Water preheating		○	○	○	○	○	○
Engine Figure ▼	Oil pressure	●	●	●	●	●	●
	Coolant temperature	●	●	●	●	●	●
	Battery voltage	●	●	●	●	●	●
	Engine rotating speed	●	●	●	●	●	●
	Engine hours run	●	●	●	●	●	●
Monitor Function ▼	Under / Over Mains Volts	×	×	●	●	×	●
	Under / Over Mains Frequency	×	×	●	●	×	●
	External Remote control start output (load / un-load)	×	×	○	○	×	○
	Configurable relay outputs	●	●	●	●	●	●
	AMF function	×	×	●	●	×	●
	Display LCD brightness adjusting	●	●	●	●	●	●
	PIN password	●	●	●	●	●	●
	RS232/485 Interface	○	○	○	○	×	○
	Faults report	×	●	×	●	×	×
	Including user adjustable language	○	○	○	○	○	○
Multi-language function	●	●	●	●	●	●	
Warning/Shutdown ▼	Alternator Under / Over Volts	●	●	●	●	●	●
	Alternator Under / Over Frequency	●	●	●	●	●	●
	Under / Over Speed	●	●	●	●	●	●
	Low Oil Pressure	●	●	●	●	●	●
	High Engine Temp	●	●	●	●	●	●
	High/Low Battery Volts	●	●	●	●	●	●
	Over current	●	●	●	●	×	●
	Electrical Trip	○	○	○	○	○	○
	Reverse Power Electrical Trip	○	○	○	○	×	○
	Phase Sequence Electrical Trip	○	○	○	○	×	○
	Earth Fault Shutdown	○	○	○	○	○	○
	Adjustable start period/times	●	●	●	●	●	●
	Period maintenance alarm	○	○	○	○	×	○

● Standard ○ Optional × Impossible

Engine ▼

Alternator ▼

Open frame / Canopy ▼

Control system ▼

GENERATOR MODEL	DG 11KE 11KSE	DG 14KE 14KSE	DG 16KE 16KSE	DG 22KE 22KSE	DG 28KE 28KSE	DG 34KE 34KSE	DG 45KE 45KSE	DG 65KE 65KSE	DG 75KE 75KSE	DG 90KE 90KSE	DG 110KE 110KSE	DG 125KE 125KSE	DG 145KE 145KSE
	DG 9KEm 9KSEm	DG 11KEm 11KSEm	DG 13KEm 13KSEm	DG 18KEm 18KSEm	DG 22KEm 22KSEm	DG 28KEm 28KSEm	DG 35KEm 35KSEm	-	-	-	-	-	-
Water-cooled diesel engine	●	●	●	●	●	●	●	●	●	●	●	●	●
Entirionment 40°C radiator	●	●	●	●	●	●	●	●	●	●	●	●	●
Entirionment 50°C radiator	○	○	○	○	○	○	○	○	○	○	○	○	○
Industrial type muffler	●	●	●	●	●	●	●	●	●	●	●	●	●
Residential type muffler	○	○	○	○	○	○	○	○	○	○	○	○	○
Oil drain pump	○	○	○	○	○	○	○	○	○	○	○	○	○
Battery and cables	●	●	●	●	●	●	●	●	●	●	●	●	●
Water pre-heater	○	○	○	○	○	○	○	○	○	○	○	○	○
Oil pre-heater	○	○	○	○	○	○	○	○	○	○	○	○	○
Coolant attached	○	○	○	○	○	○	○	○	○	○	○	○	○
Oil attached	○	○	○	○	○	○	○	○	○	○	○	○	○
IP23 protection level	●	●	●	●	●	●	●	●	●	●	●	●	●
PMG excited	○	○	○	○	○	○	○	○	○	○	○	○	○
Anti-condensation heater	○	○	○	○	○	○	○	○	○	○	○	○	○
Winding temperature measurement	○	○	○	○	○	○	○	○	○	○	○	○	○
AVR (AS440)	●	●	●	●	●	●	●	●	●	●	●	●	●
Outer fuel filling (canopy)	○	○	○	○	○	○	○	○	○	○	○	○	○
Oil filling cap with key	○	○	○	○	○	○	○	○	○	○	○	○	○
Outer water filling (canopy)	●	●	●	●	●	●	●	●	●	●	●	●	●
Fork lift hole	●	●	●	●	●	●	●	●	●	●	●	●	●
lifing hole (canopy)	○	○	○	○	○	○	○	○	○	○	○	○	○
Base frame fuel tank (8 hours)	●	●	●	●	●	●	●	●	●	●	●	●	●
Base frame without fuel tank	○	○	○	○	○	○	○	○	○	○	○	○	○
Fuel filling tube to external fuel tank	○	○	○	○	○	○	○	○	○	○	○	○	○
Fuel drain hole	●	●	●	●	●	●	●	●	●	●	●	●	●
Emergency stop button	●	●	●	●	●	●	●	●	●	●	●	●	●
Lockable door with keys	●	●	●	●	●	●	●	●	●	●	●	●	●
Silence foam (canopy)	●	●	●	●	●	●	●	●	●	●	●	●	●
U.V.W.N. PE power output pins	●	●	●	●	●	●	●	●	●	●	●	●	●
3 unit of single phase socks	●	●	●	●	●	●	●	●	●	●	●	●	●
3 Pins connect port (remote start)	●	●	●	●	●	●	●	●	●	●	●	●	●
5 Pins connect port (remote start, battery charger fixed)	○	○	○	○	○	○	○	○	○	○	○	○	○
10 Pins connect port (with AMF Module)	○	○	○	○	○	○	○	○	○	○	○	○	○
Automatic fuel filling device	○	○	○	○	○	○	○	○	○	○	○	○	○
Battery switch	○	○	○	○	○	○	○	○	○	○	○	○	○
Fuel level sensor	○	○	○	○	○	○	○	○	○	○	○	○	○
Galvanised sheet	○	○	○	○	○	○	○	○	○	○	○	○	○
P-72 Control panel	○	○	○	○	○	○	○	○	○	○	○	○	○
P-3110 Control panel	○	○	○	○	○	○	○	○	○	○	○	○	○
P-10 Control panel	○	○	○	○	○	○	○	○	○	○	○	○	○
P-16 Control panel (faults report)	○	○	○	○	○	○	○	○	○	○	○	○	○
P-20 Control panel (AMF)	○	○	○	○	○	○	○	○	○	○	○	○	○
P-25 Control panel (AMF, faults report)	○	○	○	○	○	○	○	○	○	○	○	○	○
Emergency stop button	○	○	○	○	○	○	○	○	○	○	○	○	○
Battery charger fixed	○	○	○	○	○	○	○	○	○	○	○	○	○
Power output with MCB (0~125A)	●	●	●	●	●	●	●	●	●	×	×	×	×
Power output with MCCB (0~1000A)	×	×	×	×	×	×	×	×	×	●	●	●	●
Power output with MCB+RCD	○	○	○	○	○	○	○	○	○	×	×	×	×
Power output with MCCB+RCD	×	×	×	×	×	×	×	×	×	○	○	○	○
Protective cover for rotating parts	●	●	●	●	●	●	●	●	●	●	●	●	●
Over current protection	●	●	●	●	●	●	●	●	●	●	●	●	●
Grounding protection	○	○	○	○	○	○	○	○	○	○	○	○	○

● Standard ○ Optional × Impossible

ATS system

Specification Datas

ATS Model	Rate Current	4P ATS Switch Model	Control Module	ATS Box	Dimension (mm)	Weight (kg)
ATS1-40A	40A	V61WES4F40A	D220	ATS1	400×260×570	17.5
ATS1-63A	63A	V61WES4F63A	D220	ATS1	400×260×570	17.5
ATS1-100A	100A	V61WES4F100A	D220	ATS1	400×260×570	17.5
ATS1-125A	125A	V62WE4F125A	D220	ATS1	400×260×570	20
ATS1-160A	160A	V62WE4F160A	D220	ATS1	400×260×570	20
ATS1-200A	200A	V62WE4F200A	D220	ATS1	400×260×570	20
ATS2-250A	250A	V64WE4F250A	D220	ATS2	600×355×1100	46
ATS2-320A	320A	V64WE4F320A	D220	ATS2	600×355×1100	46
ATS2-400A	400A	V64WE4F400A	D220	ATS2	600×355×1100	46
ATS3-630A	630A	V66WN4F630A	D220	ATS3	800×500×1500	140
ATS3-800A	800A	V610WN4F800A	D220	ATS3	800×500×1500	198
ATS3-1000A	1000A	V610WN4F1000A	D220	ATS3	800×500×1500	198
ATS4-1250A	1250A	V616WN4F1250A	D220	ATS4	800×600×1500	198
ATS4-1600A	1600A	V616WN4F1600A	D220	ATS4	800×600×1500	198
ATS5-2000A	2000A	V620WN4B2000A	D220	ATS5	1000×720×2200	350
ATS5-2500A	2500A	V630WN4B2500A	D220	ATS5	1000×720×2200	380
ATS5-3150A	3150A	V630WN4B3150A	D220	ATS5	1000×720×2200	380
ATS6-4000A	4000A	V640WN4B4000A	D220	ATS6	TBD	490



ATS control module

Automatic Transfer Switch Control Module. The module features 8-Bit microprocessor control. The module is used to monitor two 3-phase AC supply. Once I# AC supply failure is detected (under voltage, over voltage, miss phase), The module Automatically transfer the switch to II# AC supply, and control generator to start.



ATS switcher 40-4000A

Single coil & double shafts driver

Two switch positions 40-200A, Three switch positions 250-4000A.

50,000 electric switch times, 250,000 mechanical switch times.

Used for resistance load 40-200A, inductance load 250-4000A.

ATS box



Air filter



Fuel filter



Oil filter & Turbo oil filter



Specification Datas

Model		Engine Model	Air filter		Fuel filter		Oil filter		Turbo oil filter	
3 Phase	1 Phase		Filter Model	Qty	Filter Model	Qty	Filter Model	Qty	Filter Model	Qty
DG11E/KSE	DG9KEm/KSEm	D380	K1317	1	C0506D	1	JX0810	1	/	/
DG14KE/KSE	DG11KEm/KSEm	D390	K1317	1	OX0708	1	JX0810	1	/	/
DG16KE/KSE	DG13KEm/KSEm	D485	K1317	1	OX0708	1	JX0810D1	1	/	/
DG22KE/KSE	DG18KEm/KSEm	D490	K1317	1	OX0708	1	JX0810D1	1	/	/
DG28KE/KSE	DG22KEm/KSEm	D4102	K1317	1	OX0708	1	JX0814-T	1	/	/
DG34KE/KSE	DG28KEm/KSEm	D4102	K1317	1	OX0708	1	JX0814-T	1	/	/
DG45KE/KSE	DG35KEm/KSEm	D4105	K1522	1	OX0710	1	JX0814-G	1	/	/
DG65KE/KSE	/	D4D85Z-D2	D7300-1109101	1	630-1105010	2	150-1012240	1	/	/
DG75KE/KSE	/	D4D90Z-D20	D7300-1109101	1	644-1105010	2	150-1012240	1	ZJX0708	1
DG90KE/KSE	/	D4M3L-D	KW2036B141	1	CX0708S	1	6RZG65	1	/	/
DG110KE/KSE	/	D6B135Z-D20	B9600-1109101	1	231-1105020	1	640-1012240	1	/	/
DG125KE/KSE	/	D6B155L-D21	B9600-1109101	1	231-1105010	1	640-1012210A	1	/	/
DG145KE/KSE	/	D6B180L-D20	B9600-1109101	1	231-1105020	1	640-1012240	1	/	/

Specifications are subject to continuous product development

Changzhou ITC Power Equipment Manufacturing Co.,Ltd.
No.7 Rongsheng Road,Cuibei, Henglin Town
Changzhou City,Jiangsu Province
P.R.China
Telephone: +86 519 85099001
Facsimile:+86 519 85099002
Email:info@itc-power.com.cn
WEBSITE:www.itc-power.com.cn

Kat Power International, S.L.
Avda. Alguema, 6C
17771 Sta. Llogaia Alguema
SPAIN
Telephone :+34 972 538521
Facsimile : +34 972 980537
Email:info@itcpower.com
WEBSITE:www.itcpower.com

YOUR LOCAL DISTRIBUTOR

