



clamp[®]

▶ A TRIDON COMPANY

Product Overview





CN

↔ 9mm
ø 12-200mm
DIN3017-1
W1, W2, W4, W5



CNS

↔ 12mm
ø 12-200mm
DIN3017-1
W1, W2, W4, W5



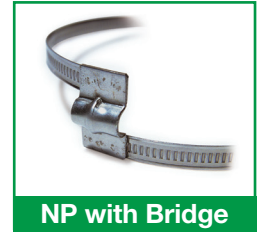
NP

↔ 9mm
ø 12-200mm
DIN3017-1
W2, W3, W4, W5



NP

↔ 12mm
ø 12-200mm
DIN3017-1
W2, W3, W4, W5



NP with Bridge

Left or Right Hand
Multiple Bridges Available
on Request.



Micro Gear

↔ 8mm
ø 16-89mm
SAE (Perforated Band)
300SS

Other Materials Available.



Hy-Gear

↔ 12mm - 1/2"
ø 12-178mm
SAE (Perforated Band)
300SS

Other Materials Available.



Hy-Gear

↔ 14mm - 9/16"
ø 20-222mm
SAE (Perforated Band)
300SS

Lined Versions Available.



Power Gear

↔ 16mm - 5/8"
ø 25-232mm
SAE (Perforated Band)
300SS



Power Gear - Lined

↔ 16mm - 5/8"
ø 25-232mm
SAE (Perforated Band)
300SS



T-Bolt

↔ 19mm - 3/4"
ø 41-211mm
with Bridge
300SS



T-Bolt - Spring Loaded

↔ 19mm - 3/4"
ø 57-141mm
with Bridge
300SS
Carbon steel bolt



TPC

↔ 16, 20, 25, 30mm
ø 23-252mm
DIN3017-3
W2, W4, W5



TPC-S

↔ 24mm
ø 122-252mm
M8/M10 Bolt & Barrel
W4, W5



TPCN

↔ 22-24mm
ø 36-252mm
M8/M10 Bolt & Barrel
W2



Bi-Blok

↔ 30mm
ø 74-500mm
2x M10 Bolt & Barrel
W1



V Clamp

Made to Order



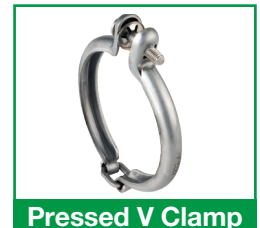
Quick Connect V Clamp

Made to Order



Univee Clamps

Made to Order



Pressed V Clamp

Made to Order



VN

↔ 9mm
ø 27-750mm
DIN3017-1
W2, W4



VNS

↔ 12mm
ø 44-750mm
DIN3017-1
W1, W2



Surelock

↔ 14mm
ø 13-565mm
SAE (Perforated Band)
304SS, 316SS



Snap Lock

↔ 14mm
ø 13-540mm
SAE (Perforated Band)
201SS, 410SS



MAR Exhaust Clamp

M8, M10
ø 35-125mm
U-Bolt type
Steel, Zinc Plated



Smart Seal

↔ 12mm - 1/2"
ø 28-125mm
with liner
300SS 410SS screw



Wave Seal

↔ 14mm - 9/16"
ø 26-173mm
with liner
300SS 410SS screw



NP - SA

↔ 9mm
ø 16-140mm
Spring assist
W3, W4



NP - SA

↔ 12mm
ø 16-140mm
Spring assist
W3, W4



Flex Gear LD

↔ 14mm - 9/16"
ø 13-89mm
Perforated band
300SS, 410SS
or carbon screw



Flex Gear HD

↔ 16mm - 5/8"
ø 25-232mm
Perforated Band
300SS, 410SS
or Carbon Screw



Ear Clip - Single

↔ 6-7.5mm Band
ø 7-18mm
W1, W4



Ear Clip - Double

↔ 6-10mm Band
ø 5-40mm
W1, W4



Ear Clip - Lined

↔ 6-7.5mm Band
ø 7.5-19.3mm
W1, W4



CAW - Ear Clip

↔ 5-7mm Band
ø 7-18, 5mm
W4

Other Sizes on Request.



DCL

↔ 8mm
ø 8-25.5mm
Colour Coded
W4

Other Sizes on Request.



Ear Clamp Tool



Pneumatic Tool

for Ear Clamps



BIFM

0.8-3.5mm wire
ø 5-61mm
Spring Wire
W1



CTS

↔ 7,8mm
ø 5.9-21.3mm
Spring Steel
W1



BIFV

↔ 1.5-3mm Wire
ø 9-175mm
W1



BEN

↔ 9mm
ø 7-25mm
W1



Heavy Bolt Clamp

↔ 25-30mm
ø 37-120mm
W1



Ezyclick

ø 9-46mm
Colour: Black
PA6.6



Herbie

ø 5.6-169mm
Colour: Black
PA6.6



Fast Clamp Kit

↔ 9mm
3m Band & 8 Housings
W2-W4



Fast Clamp Kit

↔ 14 mm
3m band & 8 Housings
Blister or Cassette
W2-W4



Fast Clamp Band

↔ 9mm
W2-W4



Fast Clamp Housing

↔ 9mm
W2-W4



Fast Clamp Band/Housing

↔ 14mm
W2-W4



Banding

↔ 6, 10, 12, 16, 19mm
L= 30m
201SS, 304SS, 316SS



Heavy Duty Banding

↔ 19, 25, 32mm
L=30m
201SS, 304SS, 316SS



Buckle

↔ 6, 10, 12, 16, 19mm
W4, W5
304SS, 316SS



Heavy Duty Buckle

↔ 19, 25, 32mm
W4, W5
304SS, 316SS



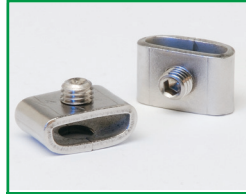
Wing Seal

↔ 12, 16, 19mm
W4, W5
304SS, 316SS



Crimp Seal

↔ 12, 19mm
W4
304SS



Screwbinder Buckle

↔ 12, 19mm
201SS



J Clamp

↔ 10, 12, 16, 19mm
ø 12-200mm
201SS



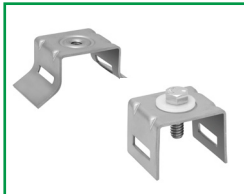
Pow'r Tight Clamp

↔ 19mm
ø 12-200mm
201SS



Free End Clamp

↔ 6.5mm
L=250-1250mm
Supplied Straight
W4



Sign Holder

M8 Straight or Flared
W4



Electrical Tool Set



Electrical Tool Set

Bench Mount Kit



Electrical Tool Set

Band & Buckle



Battery & Charger



Band & Buckle Attachment

for Electrical Tool Set



J-Hose Clamp Attachment

for Electrical Tool Set



Spin Tight Tool

up to 3/4" Band



Spin Tight Tool

for 3/4"-1 1/4" Band



J Clamp Adaptor



Clamp Center

on Request.



Assortment Box

on Request.



Contractor Packs

on Request.



Poly Bags
2, 5, 10 Pieces

on Request.



Blister Packs

on Request.



TPK DIN3016

↔ 12, 15, 20, 25mm
ø 5-200mm
EPDM Liner
W1, W3, W4, W5



Nylon Tie

↔ 2.2-12.5mm
L=75-1000mm
Black or White
PA6.6



NYL5401

↔ up to 4.8mm



NYL5405

↔ 3.5-12.5mm



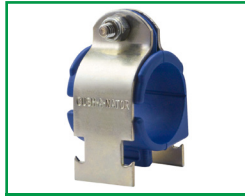
Cinturing Nylon Tie

↔ 9mm
L=200-760mm
Black
PA6.6



Cush-a-Clamp

Insulated Strut Clamp
ø 6-160mm
-45-135°C
Zinc Plated or SS304



Cush-a-Nator

Insulated Strut Clamp
ø 6-160mm
-45-135°C
Zinc Plated or SS304



Cush-a-Nator HT

High Temperature
ø 6-160mm
-53-170°C
Zinc Plated or SS304



STANDARD

EXTREME TEMP

Alpha

Insulated U-Bolt
ø 21-324mm
Standard & High Temp.
Zinc Plated or SS304



Omega

Insulated Strap Clamp
6-168mm
Standard & High Temp.
Zinc Plated or SS304



**Klo-Shure
Clamps 8 Series**

ø 6mm-DN100
For Use with Elastomeric
Foam Insulation



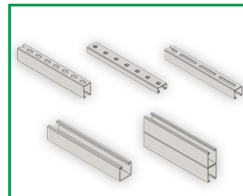
**Klo-Shure
Clamps 8 Series**

ø 6mm-DN50
For Use with Elastomeric
Foam Insulation



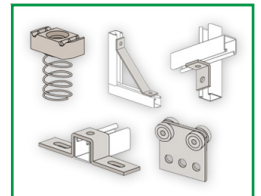
**Bronco
Saddle Support**

ø 50-220mm External
For Use with Elastomeric
Foam Insulation



Strut Channel

on Request.



Strut Fittings

on Request.



**DIN3015
Beta Standard**

ø 6-102mm
PP, PA, SA & Aluminium
W1, W4, W5



**DIN3015
Beta Twin**

ø 6-42mm
W1, W4, W5



**DIN3015
Beta Heavy**

ø 6-450mm
W1, W4, W5



**DIN3015
Beta Smooth**

ø 6-102mm
W1, W4, W5



**DIN3015
Beta Smooth Twin**

ø 6-42mm
W1, W4, W5



Cush-a-Bloc

267x127x106mm
LxWxH



**Cush-a-Bloc
& Strut**

41x21mm Strut



**Cush-a-Bloc
Bridge**

2 Blocks with
Strut on Request



**Cush-a-Bloc
Mini**

168x127x102mm
LxWxH



**Cush-a-Bloc
Mini & Strut**

41x21mm Strut

Product Details and Ordering Information:

Material		DIN	AISI	BS
W1	Steel, Zinc Plated			
W2	Band & Housing	1.4016	430	430 S 17
	Screw	Steel, Zinc Plated		
W3		1.4016	430	430 S 17
W4		1.4301	304	305 S 15
W5		1.4401	316	316 S 31

Explanation of Symbols

↔	Strap Width / Suitable For
∅	Clamping Range / Diameter
L	Length



clamp[®]
A TRIDON COMPANY



Products displayed in this flyer are RoHS compliant.
For detailed information please contact us.

Clamp s.r.l.

Via dell'Artigianato1

200070 Cerro al Lambro (Milano) Italy

T: +39 02 9803211 F: +39 02 980321399

www.clamp.it

