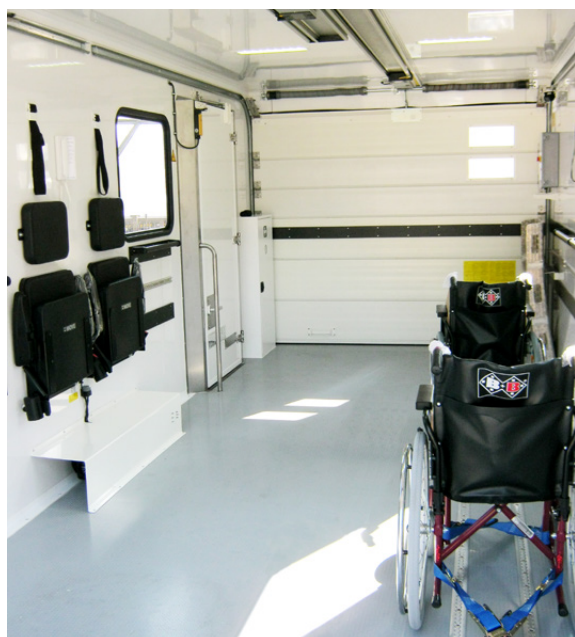


X-PRM M HALF SIZE

MERCEDES-BENZ ATEGO 1016



Pictures might be different to the original.

X-PRM M HALF SIZE

MERCEDES-BENZ ATEGO 1016

TECHNICAL DETAILS

TRUCK TYPE	Mercedes Atego 1016, Euro 6 Diesel engine, 160 HP, Powershift 3 automatic
DIMENSIONS OVER ALL	L = 8,600 mm, W = 2,550 mm, H = 3,700 mm*
DIMENSIONS BODY	L = 6,200 mm, W = 2,550 mm, H = 2,300 mm*
GVW	10,500 kg*
PAYLOAD	up to 1,000 - 1,500 kg*
WHEELBASE	4,220 mm
SILL HEIGHT MIN.	approx. 1,300 mm*
SILL HEIGHT MAX.	approx. 5,900 mm*
LOADING HEIGHT REAR	approx. 1,300 mm*
WIND STABILITY	max. 52 knots
OPERATING TEMPERATURE	-30 °C to +60 °C

* Data and illustration may change according to chassis and additional equipment

FEATURES

- ACCORDING TO LATEST EUROPEAN NORM EN 12312-2:2014
- INCL. 2 WHEELCHAIRS
- SAFETY BELT AND LASHING STRAPS FOR WHEELCHAIRS
- CUPBOARD (FIRST AID KIT AND FOLDABLE STRETCHER)
- OPERATION PANELS IN THE DRIVER'S CAB AND IN THE BODY
- HEAVY DUTY BACK EYE SYSTEM (REAR CAMERA)
- INTERCOM SYSTEM IN DRIVER'S CAB AND IN THE BODY
- TAIL GATE (1,000 kg) WITH FOLDABLE SIDE GUARDS
- LED BEACON LIGHT ON TOP OF THE VAN BODY

SAFETY FEATURES

- ✓ All necessary functions are provided for a safe and comfortable transportation of persons with restricted mobility
- ✓ Driving lock in case the stabilisers are completely out and hand-brake will be released
- ✓ Lifting of body up to ramp height is also possible without stabilisers
- ✓ Lifting of body over ramp height only when side door is closed and stabilisers are extended
- ✓ Side door is locked when body is in lifted position
- ✓ Signal when van body is lowering
- ✓ Retracting stabilisers is only possible when body is lowered

AVAILABLE ON SHORT NOTICE!



Your contact person

CHRISTOPH PORTELE

phone: +49 7804 49-514

mobile: +49 160 94939235

stockvehicles.gse@doll.eu

www.doll.eu