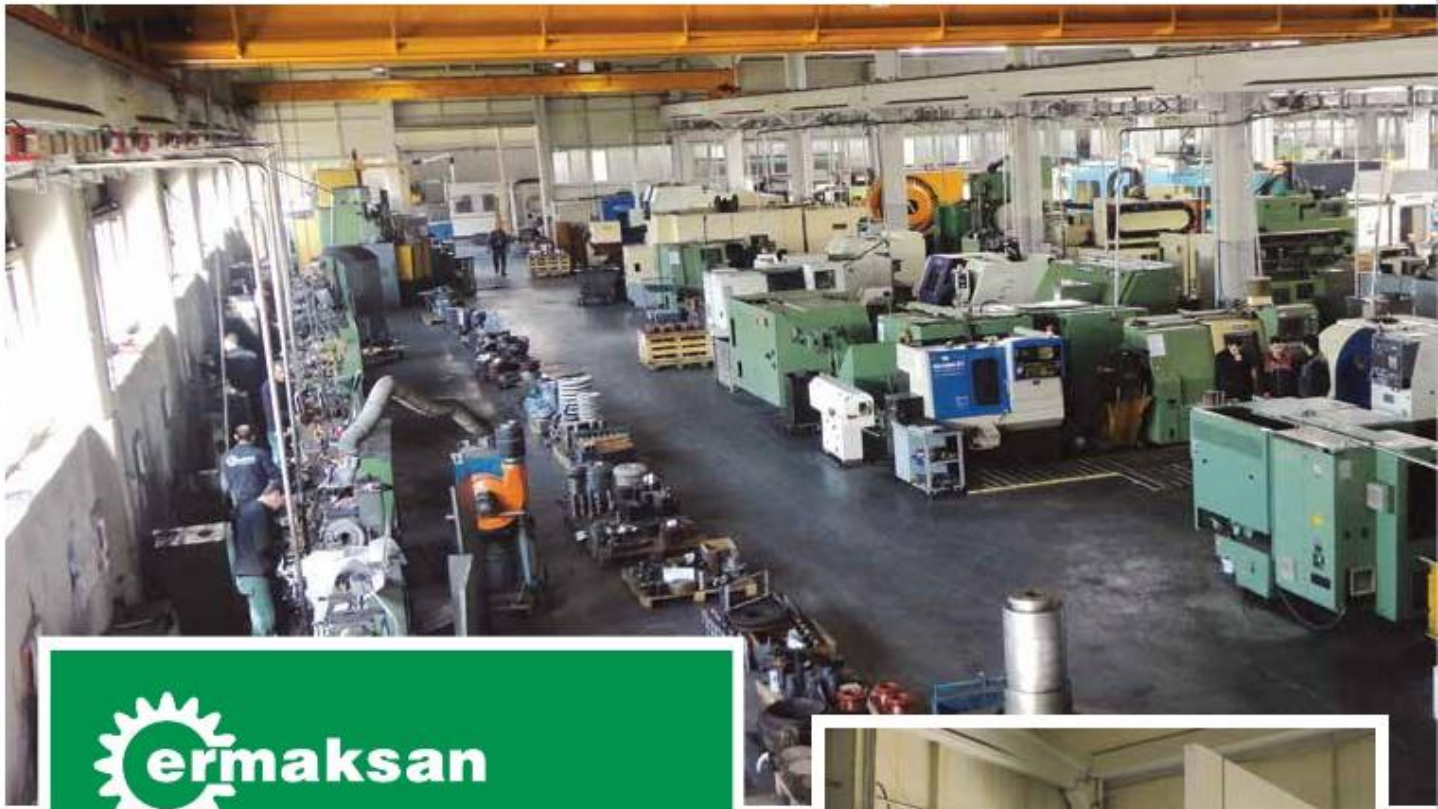


REDUCER – HYDRAULIC COUPLING AND GEAR



www.ermaksandisli.com.tr

ABOUT US



Has been producing hydraulic couplings, axles, hoops, brakes and spare parts for construction equipment with various power and sizes as well as flat, endless, helix, conical, bevelled and chain wheels since 1975 to present. It manufactures wind turbine reducer, hydraulic power plant, turbine and mil, planet reducers, concrete plant reducers, pear reducers, mil-connected reducers, one-way lock, geared coupling, elastic coupling and every kind of reducers depending on customer demand.

It provides services to wide range of customers in the country or abroad with its machinery of 230 machine in its indoor area of 8500 m² and 130 qualified employees. Customer satisfaction is a subject on which we show sensitivity in the direction of principles of quality production and delivery in time.

Some of our machinery consist of

*Universal Lathes
Vertical Lathes
CNC Lathes
CNC Vertical Lathes
CNC Vertical and Horizontal Processing
Hobbing
CNC Hobbing Fellow
Maag and Conical Gear Benches
Final Drive and Lapping Benches
Buffing Benches
Gear Profile Grinding Benches
CNC Gear Profile Grinding Benches
Module Gear Grinding Benches
Screw – Hole – Surface – Cylinder Grinding Benches
CNC Cylinder Grinding
Chamfering – Erosion – Broach Borwek
...and other benches used in production.*



CNC Gear Grinding Machine up to 2500 mm diameter and 35 modules





1200 mm CNC Gear Profile Grinding / CNC Profile Measurement and Interior Gear Profile Grinding



Analysis and design with SMT masta

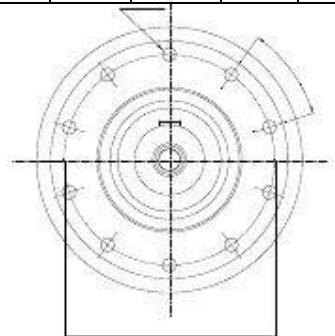
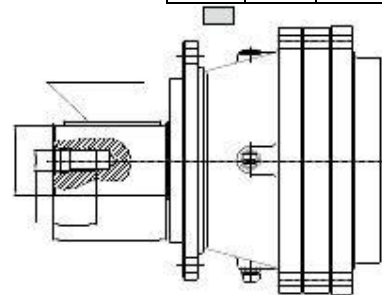
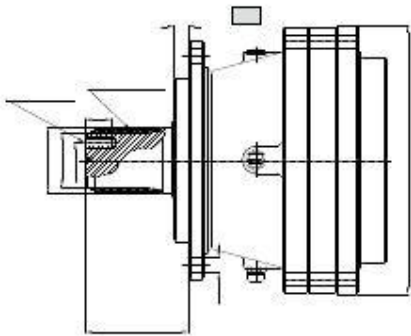
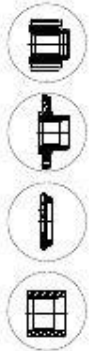
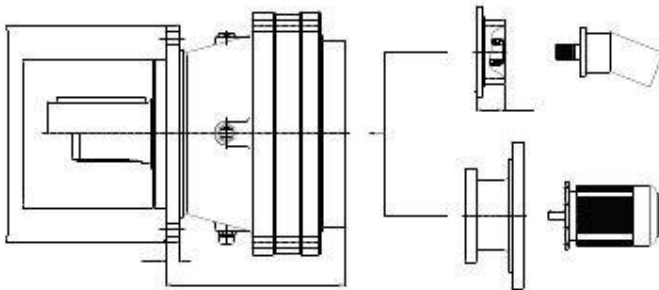
There are devices of

- 2 CNC CMM,
- KLINGELBERG CNC Gear Profile Measurement Machine,
- Material Analysis Device,
- Ultrasonic and Magnetic Material Control

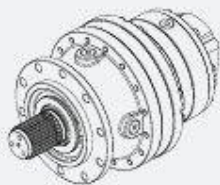
In quality control laboratories of our firm having TSE and TÜV CERT.



Level	A (mm)
EMS 301	233
EMS 302	244
EMS 303	293.5

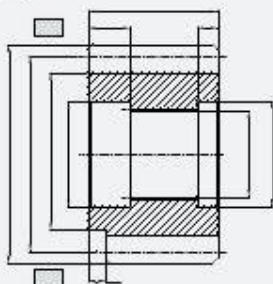


Model	i	T ₂ (Nm)					T _{2max} (Nm)	P _t (kW)
		n ₂ x h						
		10.000	20.000	50.000	100.000	n ₂ max (min ⁻¹)		
EMS 301	3.77	3980	3520	3000	2650	2800	7040	20
	4.12	3600	3190	2710	24CC	2800	6330	20
	5.16	3010	2660	2260	2000	2800	5320	20
	6.00	2520	2230	1900	1E8C	2800	4460	20
	7.25	1950	1730	1470	13CC	2300	3460	20
EMS 302	13.4	3980	3520	3000	2650	2300	7040	12
	16.1	3930	3520	3000	2650	2300	7040	12
	23.3	3010	2660	2260	2000	2300	5320	12
	23.1	3600	3190	2710	2400	2300	6330	12
	28.9	3010	2660	2260	2000	2300	5320	12
	34.E	3010	2660	2260	2000	2300	5320	12
	40.5	2520	2230	19CC	163C	2300	4460	12
	48.9	1950	1730	1470	13C0	2300	3460	12
	62.8	1950	1730	1470	1300	2300	3460	12
	52.1	3600	3190	2710	2400	2300	6380	8
EMS 303	57.5	3930	3520	3000	2650	2300	7040	8
	628	3600	3190	2710	2400	2E00	6380	8
	752	3930	3520	3000	2650	2B00	7040	8
	821	3600	3190	2710	2400	2B00	6380	8
	90.6	39E0	3520	3000	2650	2B00	7040	8
	98.6	3600	3190	2710	2400	2B00	6380	3
	113.3	3600	3190	2710	2400	2B00	6380	3
	129.3	3600	3190	2710	2400	2B00	6380	3
	149.4	3010	2660	2260	2000	2B00	5320	3
	1559	3600	3190	2710	2400	2B00	6380	3
	162.0	3010	2660	2260	2000	2B00	5320	3
	173.5	2520	2230	1900	1680	2B00	4460	3
	195.2	3010	2660	2260	2000	2800	5320	3
	235.4	3010	2660	2260	2000	2800	5320	3
	2733	2520	2230	1900	1680	2800	4460	3
	3022	3010	2660	2260	2000	2800	5320	3
	330.3	1950	1730	1470	1300	2800	3460	3
	424.1	1950	1730	1470	1300	2800	3460	B

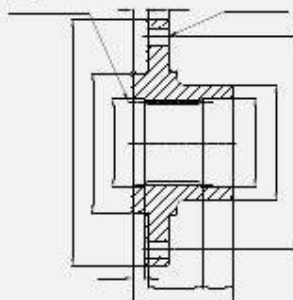


	nm	z	x	dd	do	da	H	A	B
PA	8	13	0	83	104	120	63	0	8.5
PA	8	11	0.85	748	83	110.8	63	0	8.5
PA	8	12	0.1	83	96	1128	63	0	3
PB	10	14	0.24	117.4	140	162.4	116	13	9.5
PA	8	15	0	100	120	136	63	0	8.5
PA	6	14	0.6	726	84	99.6	95	0	23
PA	10	11	121	97.1	110	142.1	90	0	8

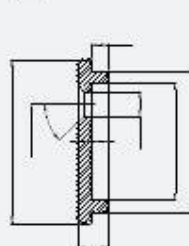
□ P Pinion



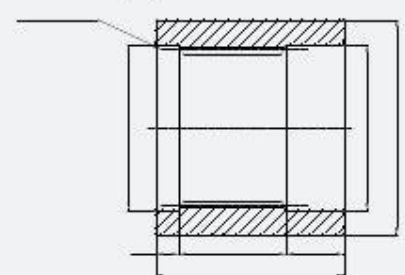
□ F Flange



□ SP Fixing Washer



□ FK Cutter Coupling

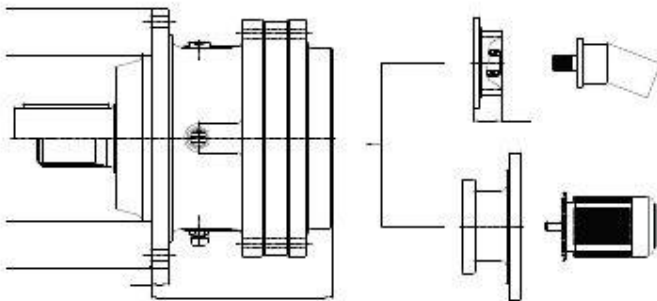


PLANET REDUCERS EMS-500

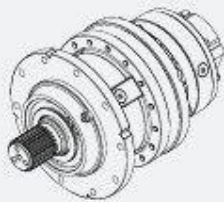
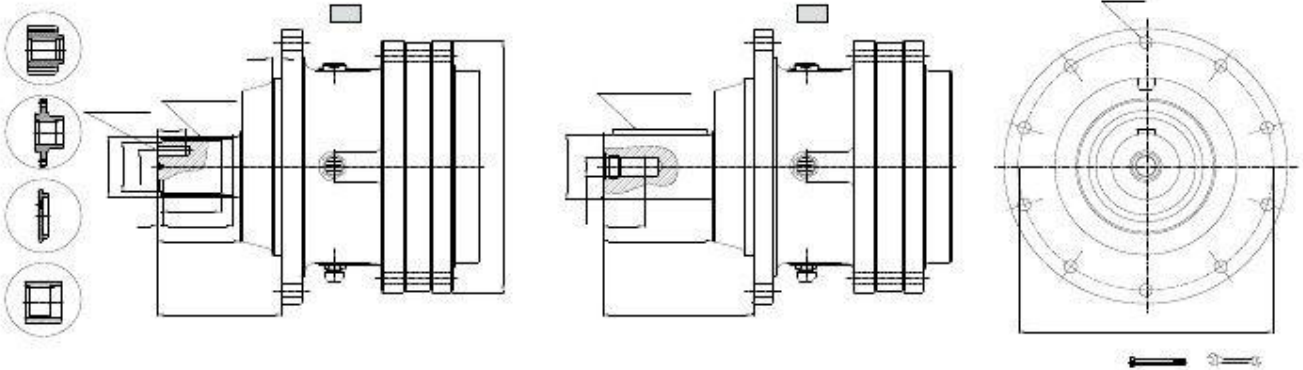


Level	A (mm)
EMS 501	239.5
EMS 502	250.5
EMS 503	311.5

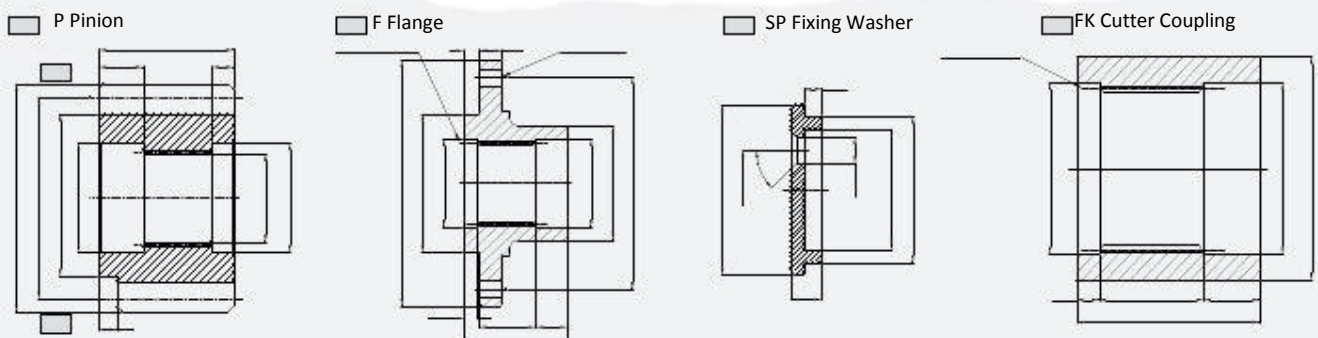
Model	i	T ₂ (Nm)					T ₂ max (Nm)	P _i (kW)
		n ₂ x h						
		10.000	20.000	50.000	100.000	n ₁ max (min ⁻¹)		
EMS 501	3.77	5770	5110	4350	3850	2800	10220	20
	4.12	5260	4660	3970	3510	2800	9320	20
	5.16	4300	3810	3240	2870	2800	7620	20
	6.00	3770	3340	2840	2520	2800	6680	20
	7.25	2950	2610	2220	1970	2800	5220	20
EMS 502	13.4	5770	5110	4350	3850	2800	10220	15
	16.1	5770	5110	4350	3850	2800	10220	15
	23.3	4300	3810	3240	2870	2800	7620	15
	23.1	5260	4660	3970	3510	2800	9320	15
	28.9	4300	3810	3240	2870	2800	7620	15
	34.E	4300	3810	3240	2870	2800	7620	15
	40.5	3770	3340	2840	2520	2800	6630	15
	48.9	2950	2610	2220	1970	2800	5220	15
	52.1	5770	4660	3970	3510	2800	9320	10
	57.5	5260	5110	4350	3950	2800	10220	10
EMS 503	62.8	5770	4660	3970	3510	2800	9320	10
	75.2	5260	5110	4350	3350	2800	10220	10
	82.1	5770	4660	3970	3510	2800	9320	10
	90.6	5260	5110	4350	3650	2800	10220	10
	98.6	5260	4660	3970	3510	2800	9320	10
	119.3	5260	4660	3970	3510	2800	9320	10
	129.3	4300	4660	3970	3510	2800	9320	10
	149.4	5260	3810	3240	2870	2800	7620	10
	155.9	4300	4660	3970	3510	2800	9320	10
	162.0	3770	3810	3240	2870	2800	7620	10
	173.5	4300	3340	2840	2520	2800	6680	10
	195.2	4300	3810	3240	2870	2800	7620	10
	235.4	3770	3810	3240	2870	2800	7620	10
	273.3	4300	3340	2840	2520	2800	6680	10
	302.2	5770	3810	3240	2870	2800	7620	10
	330.3	2950	2610	2220	1970	2800	5220	10



Production of motor connection flange is performed per request



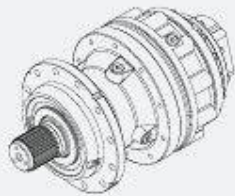
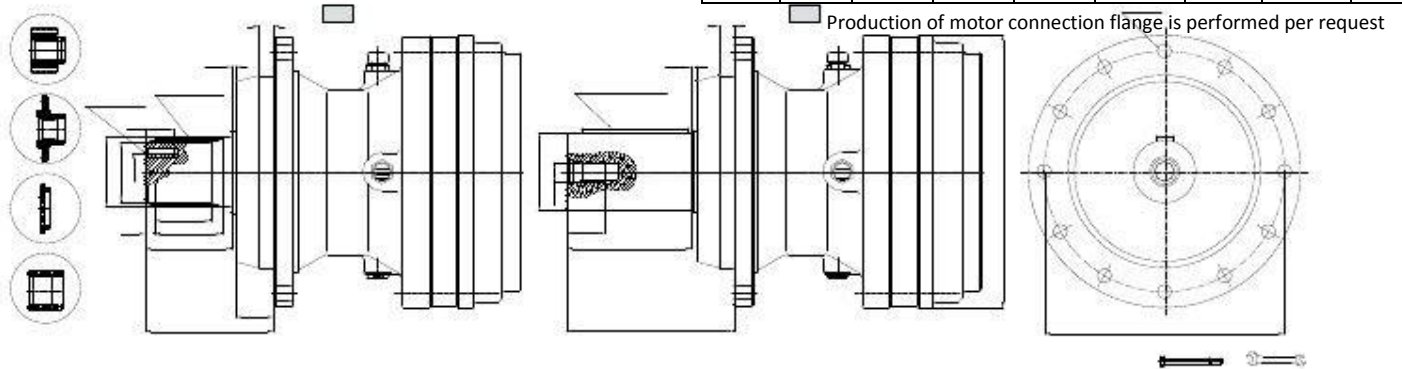
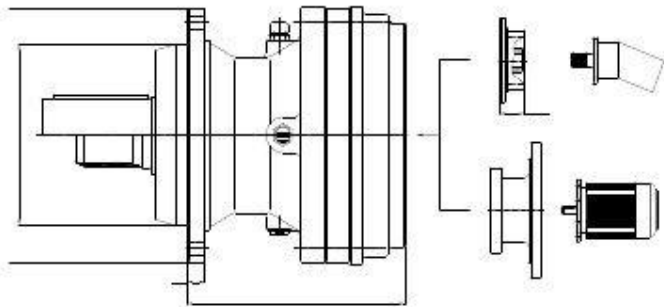
	nm	z	x	dd	do	da	H	A	B	C
PA	8	13	0	88	104	120	68	0	8.5	22.5
PA	8	11	0.85	74.8	88	110.8	68	0	8.5	22.5
PA	8	12	0.1	88	96	1128	68	0	3	21
PB	10	14	0.24	117.4	140	162.4	116	13	9.5	22.5
PA	8	15	0	100	120	136	68	0	8.5	22.5
PA	6	14	0.6	72.6	84	99.6	95	0	23	21
PA	10	11	121	97.1	110	142.1	90	0	8	22.5



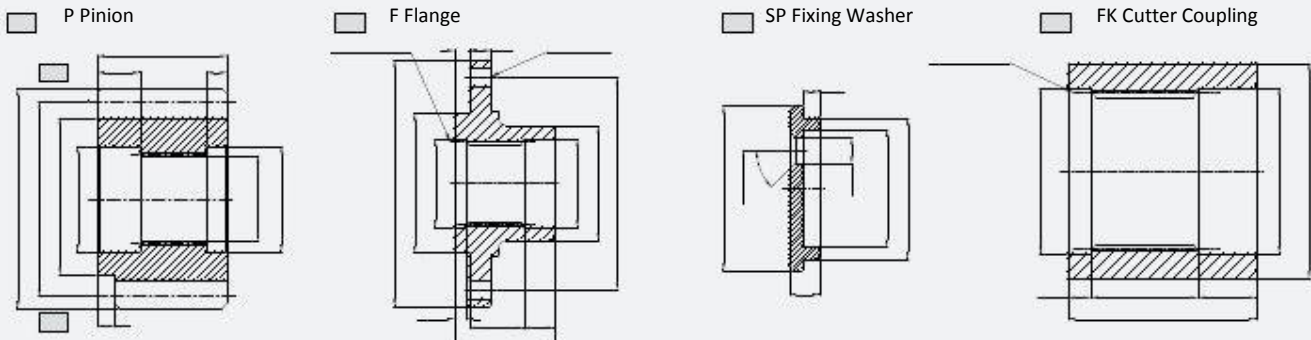


Level	A (mm)
EMS 701	257
EMS 702	317
EMS 703	375

Model	i	T ₂ (Nm)					T _{2max} (Nm)	P _i (kW)
		n ₂ x h						
		10.000	20.000	50.000	100.000	n ₁ max (min ⁻¹)		
EMS 701	3.66	7930	7020	5970	5290	2800	14040	30
	4.42	7240	6410	5450	4930	2800	12820	30
	5.00	6360	5630	4790	4240	2800	11260	30
	5.80	5380	4760	4050	3590	2800	9520	30
	7.00	4350	3850	3280	2900	2800	7700	30
EMS 702	13.8	7930	7020	5970	5290	2800	14020	23
	18.2	7240	6410	5450	4830	2800	12320	23
	20.6	6360	5630	4790	4240	2800	11260	23
	22.8	7240	6410	5450	4830	2800	12320	23
	26.5	7240	6410	5450	4830	2800	12320	23
	30.0	6360	5630	4790	4240	2800	11260	23
	36.2	6360	5630	4790	4240	2800	11260	23
	42.0	5380	4760	4050	3590	2800	9520	23
	50.7	4350	3850	3280	2900	2800	7700	23
	EMS 703	53.7	7930	7020	5970	5290	2800	14040
64.8		7930	7020	5970	5290	2800	14040	14
71.6		7240	6410	5450	4830	2800	12820	14
78.2		7240	6410	5450	4830	2800	12820	14
88.3		6360	5630	4790	4240	2800	11260	14
93.6		7140	6410	5450	4830	2800	12820	14
102.1		7930	7020	5970	5290	2800	14040	14
112.9		7240	6410	5450	4830	2800	12820	14
127.8		7930	7020	5970	5290	2800	14040	14
139.2		6360	5630	4790	4240	2800	11260	14
148.7		7240	6410	5450	4830	2800	12820	14
155.3		6360	5630	4790	4240	2800	11260	14
174.3		6360	5630	4790	4240	2800	11260	14
194.8		5380	4760	4050	3590	2800	9520	14
216.7		7240	6410	5450	4330	2800	12820	14
244.6		6340	5630	4790	4240	2800	11260	14
283.8		5380	4760	4050	3590	2800	9520	14
342.5	4350	3850	3280	2900	2800	7700	14	



	nm	z	x	dd	do	da	H	A	B	C
PA	10	11	1.21	72.9	110	142.1	90	0	10	31
PB	10	11	1.21	72.9	110	142.1	90	9	23.5	31
PA	10	12	0	95	120	140	90	0	10	31
PB	10	13	0	95	120	155	90	0	10	30



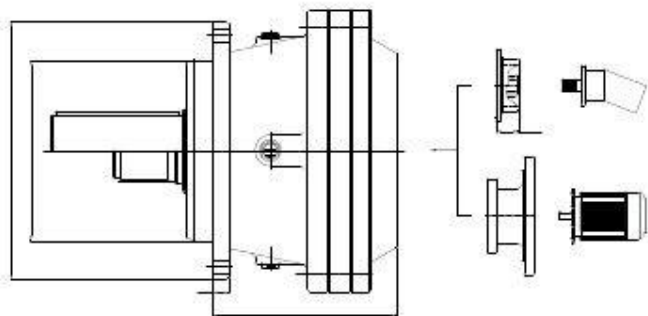
PLANET REDUCERS

EMS-1000

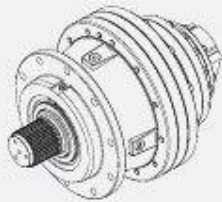
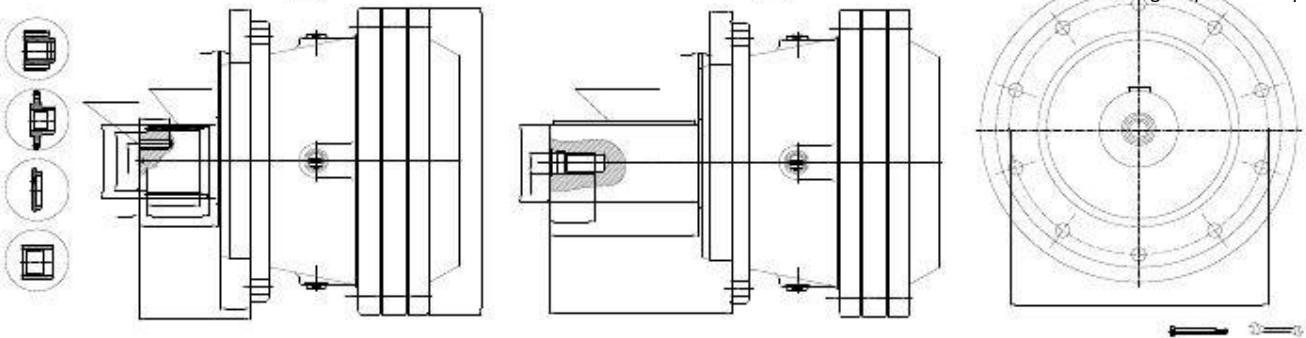


Level	A (mm)
EMS 1001	237.5
EMS 1002	309.5
EMS 1003	

Model	i	T ₂ (Nm)					T ₂ max (Nm)	P _i (kW)
		n ₂ x h						
		10.000	20.000	50.000	100.000	n ₁ max (min ⁻¹)		
EMS 1001	3.55	13800	12210	10390	9200	2000	24420	40
	4.28	11860	10500	8940	7910	2000	21000	40
	5.60	9220	8160	6940	6150	2000	16320	40
	6.75	7040	6230	5300	4690	2000	12450	40
	8.66	4980	4410	3750	3320	2000	8820	40
EMS 1002	13.4	13800	12210	10390	9200	2800	24420	23
	16.1	11860	10500	8940	7910	2800	21000	23
	18.3	13800	12210	10390	9200	2800	24420	23
	22.1	11860	10500	8940	7910	2800	21000	23
	25.7	11360	10500	8940	7910	2800	21000	23
	28.9	9220	8160	6940	6150	2800	16320	23
	33.6	9220	8160	6940	6150	2800	16320	23
	40.5	7040	6230	5300	4690	2800	12460	23
	48.9	7040	6230	5300	4690	2800	12460	23
	EMS 1003	57.5	13800	12210	10390	9200	2800	24420
62.8		13800	12210	10390	9200	2800	24420	15
75.2		13800	12210	10390	9200	2800	24420	15
82.1		13800	12210	10390	9200	2800	24420	15
94.8		11860	10500	8940	7910	2800	21000	15
109.2		11860	10500	8940	7910	2800	21000	15
118.4		9220	8160	6940	6150	2800	16320	15
123.9		11860	10500	8940	7910	2800	21000	15
129.3		9220	8160	6940	6150	2800	16320	15
143.9		11860	10500	8940	7910	2800	21000	15
155.9		9220	8160	6940	6150	2800	16320	15
173.5		11860	10500	8940	7910	2800	21000	15
188.1		9220	8160	6940	6150	2800	16320	15
195.2		9220	8160	6940	6150	2800	16320	15
209.7		7040	6230	5300	4690	2800	12460	15
226.8	9220	8160	6940	6150	2800	16320	15	
235.4	7040	6230	5300	4690	2800	12460	15	
274.0	9220	8160	6940	6150	2800	16320	15	

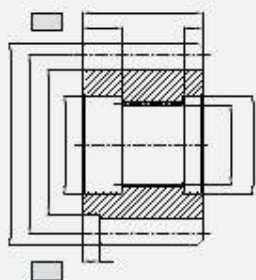


Production of motor connection flange is performed per request

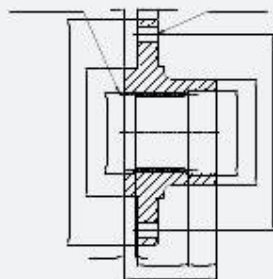


	nm	z	x	dd	do	da	H	A	B	C
PA	10	12	0	95	120	140	90	0	10	31
PA	10	14	0	95	140	160	90	0	10	31
PB	12	14	2.5	135.5	168	194.5	90	25	25	31

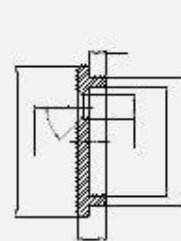
□ P Pinion



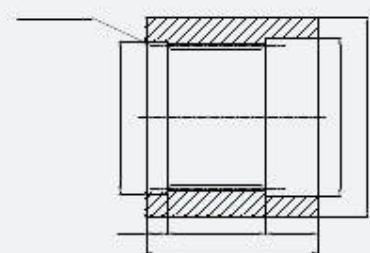
□ F Flange



□ SP Fixing Washer

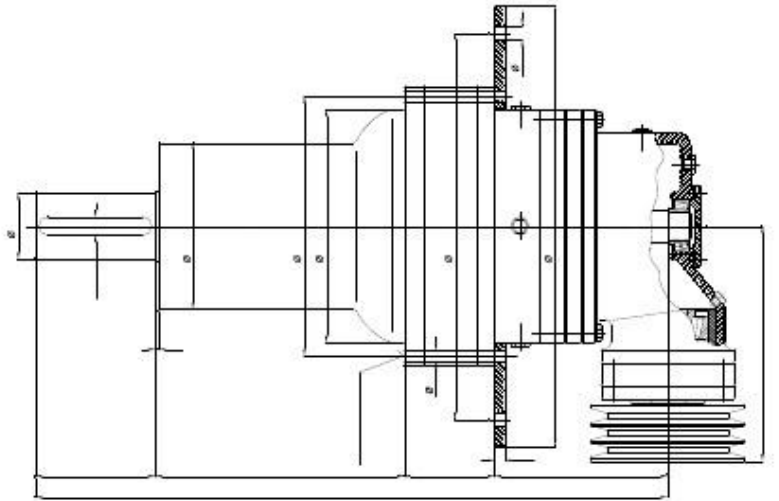


□ FK Cutter Coupling





37 kW 1/63
Concrete Plant Reducer



22 kW 1/63
Concrete Plant Reducer



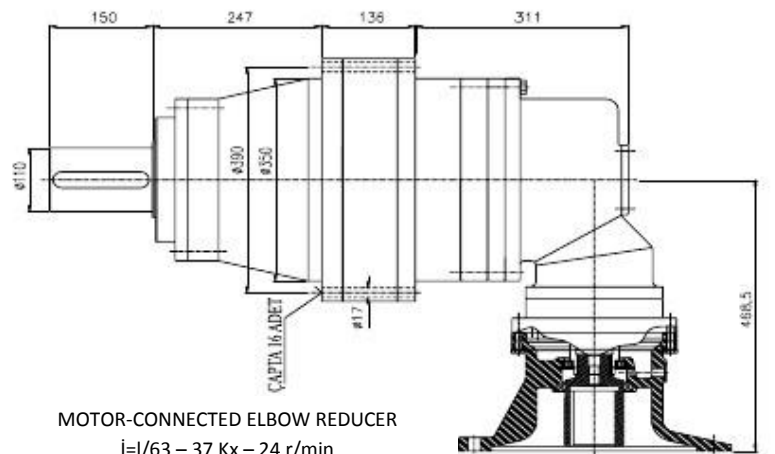
37 kW
Concrete Plant Reducer



75 kW
Concrete Plant Reducer

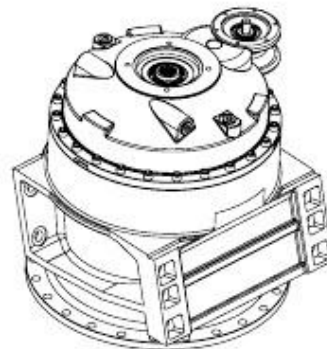
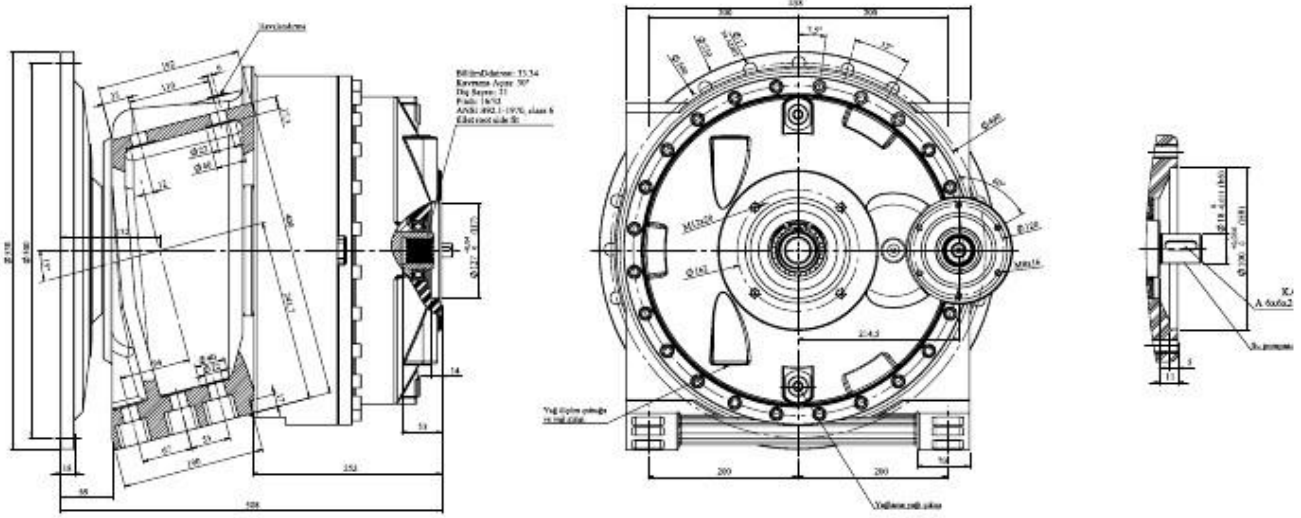


22 kW 1/63
Concrete Plant Reducer



MOTOR-CONNECTED ELBOW REDUCER
i=1/63 - 37 Kx - 24 r/min

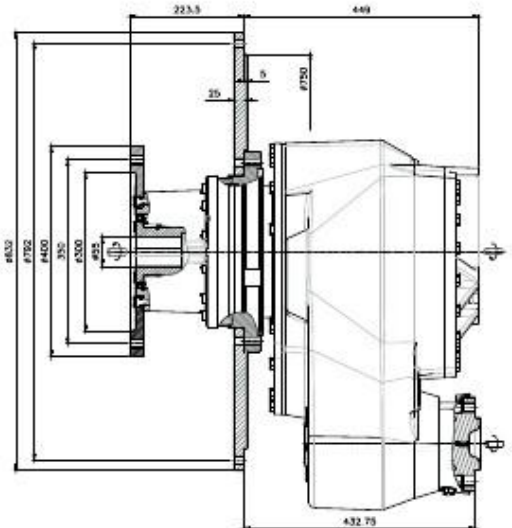
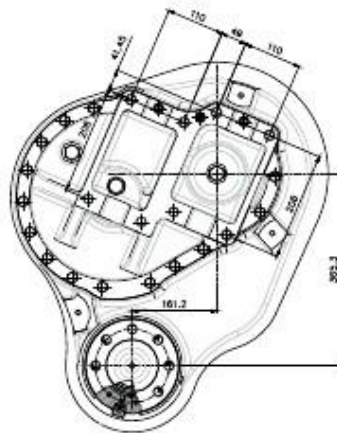
TRANSMIXER REDUCERS



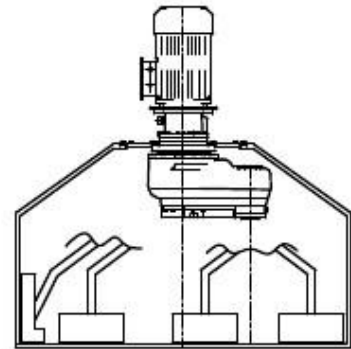
Product Name	Output Rate	Mixer Capacity	Maximum Input	Maximum
			Rotation to	Output Torque
	i	M ³	Reducer	Nm
TMR1	101,96	6-8	2500	60000
TMR2	103,33	8-10	2500	60000



0,5 m³ Octopus Type Mixer Reducer



1 m³ Octopus Type Mixer Reducer

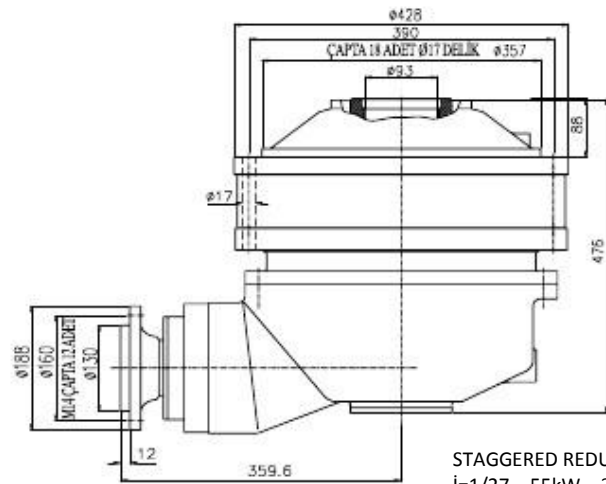


1,5 m³ Octopus Type Mixer Reducer

	EMS-30	EMS-45	EMS-75
KW and Input rotation	30 kW 1500 r/m	45 kW 1500 r/m	75 kW (2*37 kW) 1500 r/m
Dry loading capacity	500 l	1,500 l	2,250 l
Compressed concrete capacity	300 l	1,000 l	1,500 l
Body output rotation	14 r/m	14,3 r/m	15 r/m
Arm output rotation	40 r/m	46,7 r/m	30 r/m
Body continuous torque	4250 Nm	9000 Nm	
Body maximum torque	6250 Nm	12990 Nm	
Oil	40 l	70 l	
Weight	520 kg	850 kg	



1 m³ Twin Shaft Reducer



STAGGERED REDUCER
i=1/27 – 55kW – 3m³



2 m³ – 3 m³ Twin Shaft Reducer



4 m³ Twin Shaft Reducer

Product Name	Output Rate	Mixer Capacity	Electric motor power	Weight
	l	M ³	kw	kg
TWINSHAFT1	1/23,5	0,5-1	18,5-22	130
TWINSHAFT2	1/27	2	30-37	250
TWINSHAFT3	1/27	3	55	250
TWINSHAFT4	1/27	4-4,5	75	340



Twin Shaft Geared Coupling



Twin Shaft Interconnection Shaft



Twin Shaft Hoop



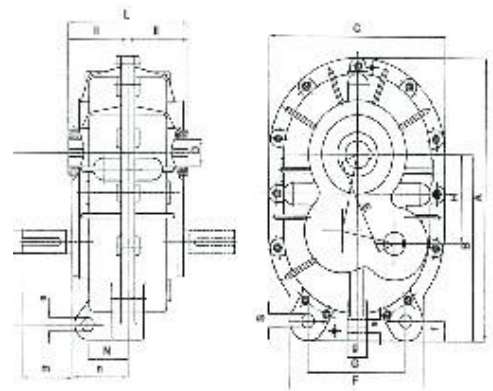
Conveyor band driving application



Model	ROTATION NUMBER		EMS 202	EMS 240	EMS 252	EMS 282	EMS 300	EMS 320	TYPE
	Input r/m	Output r/m	24	40	46	60	70	80	
			160	320	360	520	640	780	
									Thermic Power kW
									T Kp.m
6,3:1	1500	238	24	48	54	76	96	120	
	1000	159	16	32	36	50	64	80	
	750	119	12	24	27	38	48	60	
8:1	1500	188	22	42	48	66	86	108	
	1000	125	15	28	32	44	55	72	
	750	94	11	21	24	33	43	54	
10:1	1500	150	20	38	42	53	76	96	
	1000	100	13	25	28	33	50	64	
	750	75	10	19	21	29	38	48	
12:1	1500	125	13	34	36	52	68	86	
	1000	83	12	23	24	35	45	55	
	750	63	9	17	18	26	34	43	
14:1	1500	107	16	30	32	46	60	76	
	1000	71	11	20	21	30	40	50	
	750	54	8	15	16	23	30	38	
16:1	1500	94	14	26	29	41	52	68	
	1000	63	9	17	19	23	35	45	
	750	47	7	13	14	20	26	34	
18:1	1500	83	12	23	26	36	46	60	
	1000	56	8	15	17	24	30	40	
	750	42	6	11	13	13	23	30	
20:1	1500	75	10	20	23	32	41	52	
	1000	50	7	13	15	21	28	35	
	750	38	5	10	11	16	20	26	
24:1	1500	63	9	18	20	23	36	46	
	1000	42	6	12	13	19	24	30	
	750	31	4	9	10	14	18	23	
28:1	1500	54	8	16	18	25	32	40	
	1000	35	5	11	12	17	21	27	
	750	27	4	8	9	12	16	20	

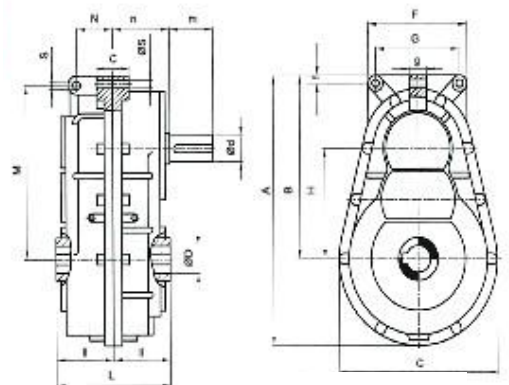
T: Output moment

Thermic Power is for reducers running in indoor environment and on which no cooling is made



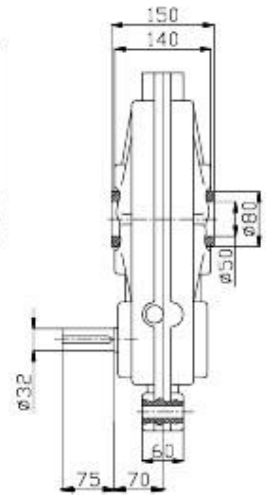
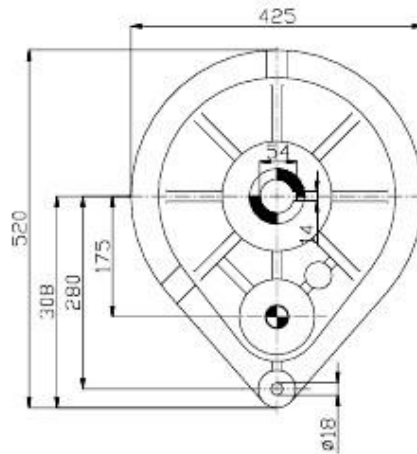
TYPE	Measurements mm																
	A	B	C	D	d	E	F	G	g	H	L	ll	M	m	N	n	S
390	243	290	50	32	133	153	110	48	120	180	90	225	80	60	90	18	31,5
434	280	308	50	38	146	230	123	25	134	200	100	260	80	60	75	18	50
445	280	325	55	42	170	166	123	48	155	204	102	265	80	70	97	18	72,5
497	325	344	55	42	178	230	180	33	160	240	120	300	80	70	85	22	102,5
578	350	395	55	48	200	300	220	44	181	270	135	350	100	90	90	20	125,5
578	380	395	55	48	200	300	220	44	181	270	135	350	100	90	125	28	145
	In-line																
410	290	240	45	28	180	155	125	30	180	190	95	275	80	50	100	15	
465	330	270	50	35	200	170	130	30	205	200	100	310	80	55	105	20	
500	350	285	55	35	225	180	140	30	220	220	110	330	90	55	110	20	
580	395	340	60	42	250	240	180	40	250	240	120	380	80	70	130	24	
640	435	350	70	45	280	220	170	35	280	260	130	410	125	70	135	20	
685	486,5	396	75	55	300	274	205	45	300	280	140	458	100	90	149	25	166,5
718	507	402	80	55	320	390	206	40	320	300	150	470	100	103	155	28	210

D measures may vary according to request of the customer



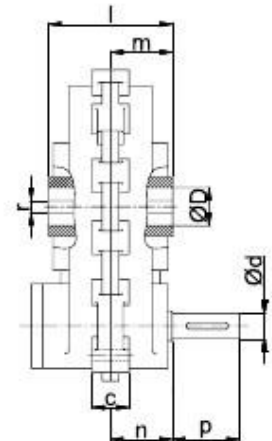
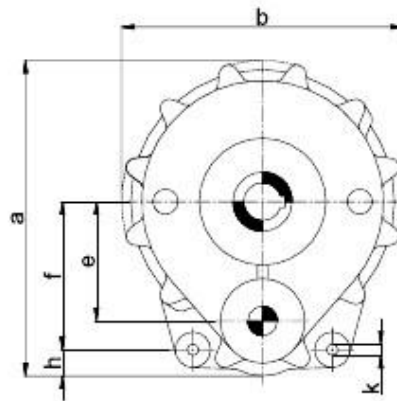
For EMS 300-320

PEAR TYPE SHAFT CONNECTED REDUCERS



i	ROTATION NUMBER		TYPE	EMS-A		WEIGHT
	Input r/m	Output r/m		T Nm	100	
1:6,4	1500	240		16	31,5	
	1000	160		11		
	750	120		8		

i: Rotation rate
T: Output Rate



i	ROTATION NUMBER		TYPE	EMS-A15		EMS-A20	
	Input r/m	Output r/m		T nM	450	800	kg
1:7,3	1500	205		9,7	21,5		
	1000	137		6,5	14,3		
	750	103		4,8	10,8		

i: Rotation rate
T: Output Rate

TYPE	Measurements mm																
	i	a	b	c	d	D	e	f	g	h	k	l	m	n	p	r	
EMS-A15	1:7,3	363	334	40	25	35	141	168	165	30	13,5	100	47	53	40	10	
EMS-A20	1:7,3	373	334	44	30	45	141	175	165	31	13,5	147	68	73	80	14	

SPIRAL REDUCERS



TYPE	Power Unit	Pole Number	Spiral Length	Rotation rate	Rotational speed	Capacity	Weight
	kW					t/h	kg
H1	5-7,5	4	8-10	1/5	300	25 t/h	45
	5-7,5	4	6-8	1/5	300	45 t/h	45
H2	11	4	9-12	1/7	300	85 t/h	60
	15	4	6-10	1/7	222		70
	18.5	4	11-12	1/7	222		70





CONICAL GEAR
Up to \varnothing 900 mm 20 Modules



FLAT GEAR
Up to \varnothing 3000 mm 30 Modules



CIRCLE GEAR
Up to \varnothing 1500 mm 30 Modules



HERRINGBONE GEAR
Up to \varnothing 3000 mm 30 Modules



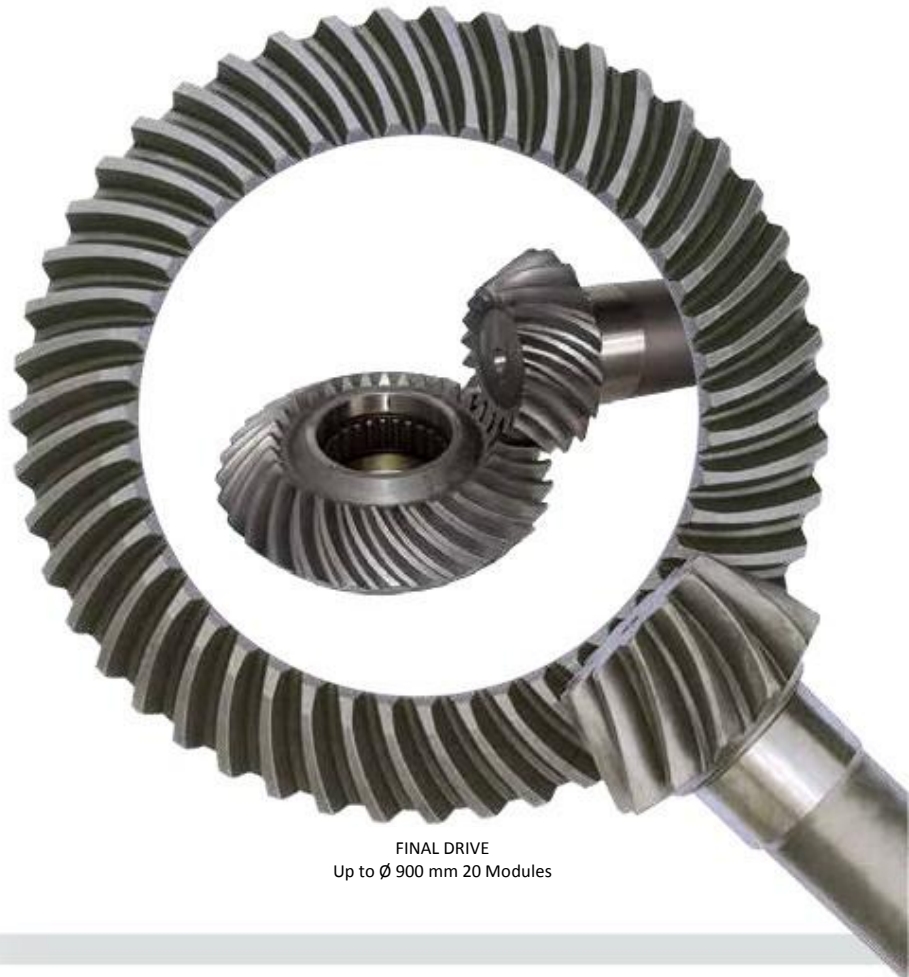
CHAIN GEAR
Up to \varnothing 3000 mm 30 Modules



HELICAL GEAR
Up to \varnothing 3000 mm 30 Modules

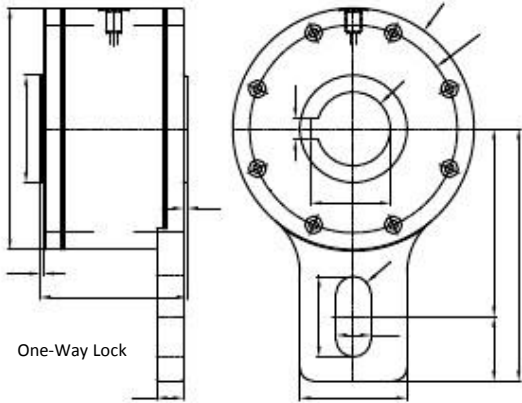


ENDLESS GEAR and WHEEL
Up to \varnothing 1500 mm 20 Modules



FINAL DRIVE
Up to \varnothing 900 mm 20 Modules

COUPLING AND BRAKE TYPES



One-Way Lock

TYPE	Measurements mm														
	a	b	c	d	D	e	f	g	h	k	l	m	n	p	r
EGK 160 - Å50	20	3	110	80	53,8	155	50	14	13	60	26	80	48	140	188
EGK 160 - Å55	20	3	110	80	59,3	155	55	16	13	60	26	80	48	140	188
EGK 180 - Å55	18,5	4,5	121	95	59,3	165	55	16	13	60	26	72	48	140	188
EGK 180 - Å60	25	2,5	125	90	64,4	165	60	18	13	60	26	90	50	150	200
EGK 180 - Å65	25	2,5	125	90	69,9	165	65	20	13	60	26	90	50	150	200
EGK 200 - Å65	25	2,5	125	100	69,4	180	65	18	13	65	26	100	55	160	215
EGK 200 - Å70	25	2,5	125	100	74,9	180	70	20	13	65	26	100	55	160	215
EGK 200 - Å75	25	2,5	125	100	79,9	180	75	20	13	65	26	100	55	160	215
EGK 240 - Å75	30	4	150	120	79,9	180	75	20	13	60	26	120	60	180	240
EGK 240 - Å80	30	4	150	120	85,4	210	80	22	13	60	26	120	60	180	240
EGK 240 - Å85	30	4	150	120	90,4	210	85	22	13	60	26	120	60	180	240
EGK 240 - Å90	30	4	150	120	95,4	210	90	25	13	60	26	120	60	180	240
EGK 240 - Å95	30	5	180	140	100,4	240	95	25	16	72	32	120	70	210	280
EGK 300 - Å100	30	5	180	140	106,4	240	100	28	16	72	32	120	70	210	280
EGK 300 - Å110	30	5	180	140	116,4	240	110	28	16	72	32	120	70	210	280
EGK 360 - Å115	40	5	200	170	122,4	300	115	32	22,5	110	45	180	100	300	400

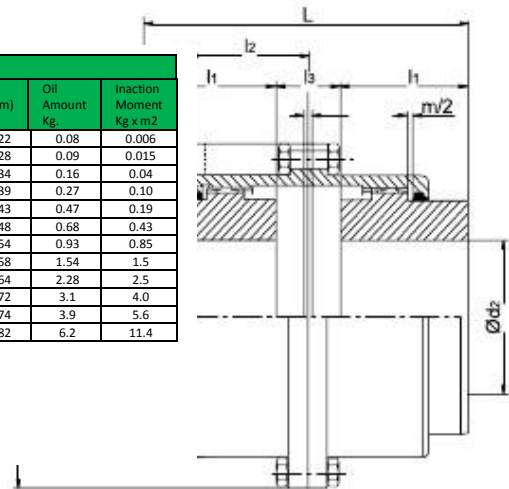


One-Way Lock

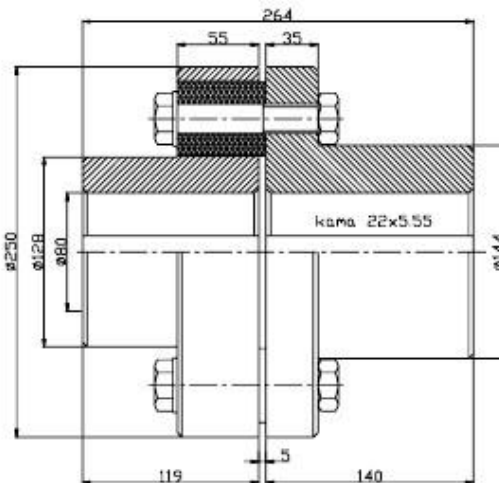


Geared Coupling

TYPE	Nom. Mom. Knm	Max. Mom. Knm	Speed r/d	Measurements mm													
				d1/d2 min. (mm)	d1/d2 max. (mm)	D1 (mm)	D2 (mm)	D3 (mm)	L (mm)	L1 (mm)	L2 (mm)	L3 (mm)	M (mm)	Z (mm)	Oil Amount Kg	Inaction Moment Kg x m2	
E 0 A	1.8	4.3	6000	12	52	69	82.5	111	93	43	39	7	3	22	0.08	0.006	
E 1 A	2.7	6.6	4600	18	62	85	104.5	142	113	50	45.5	13	3	28	0.09	0.015	
E 2 A	5.5	13.3	4100	28	78	107	130.5	163	149	62	59	25	3	34	0.16	0.04	
E 3 A	8.7	20.9	4000	40	98	133	158.5	200	171	76	68.5	19	5	39	0.27	0.10	
E 4 A	14	33	3900	50	112	152	183.5	225	223	90	82.5	43	5	43	0.47	0.19	
E 5 A	22	54	3700	60	132	178	211.5	265	258	105	93	48	6	48	0.68	0.43	
E 6 A	34	83	3200	70	156	209	245.5	300	298	120	106	58	6	54	0.93	0.85	
E 7 A	44	105	2900	85	174	234	275	330	336	135	118	66	3	58	1.54	1.5	
E 8 A	69	167	2500	95	190	254	307	370	392	150	133	92	8	64	2.28	2.5	
E 9 A	33	201	2300	110	210	279	335	406	448	175	154	98	8	72	3.1	4.0	
E 10 A	152	365	2100	120	233	305	367	439	488	190	166	108	8	74	3.9	5.6	
E 11 A	203	488	1300	130	280	355	423	505	574	220	193	134	10	82	6.2	11.4	

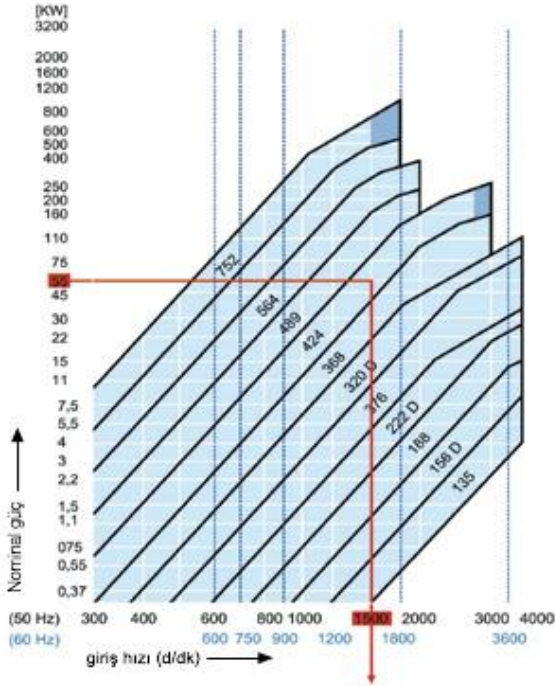


Geared Coupling



Elastic Coupling





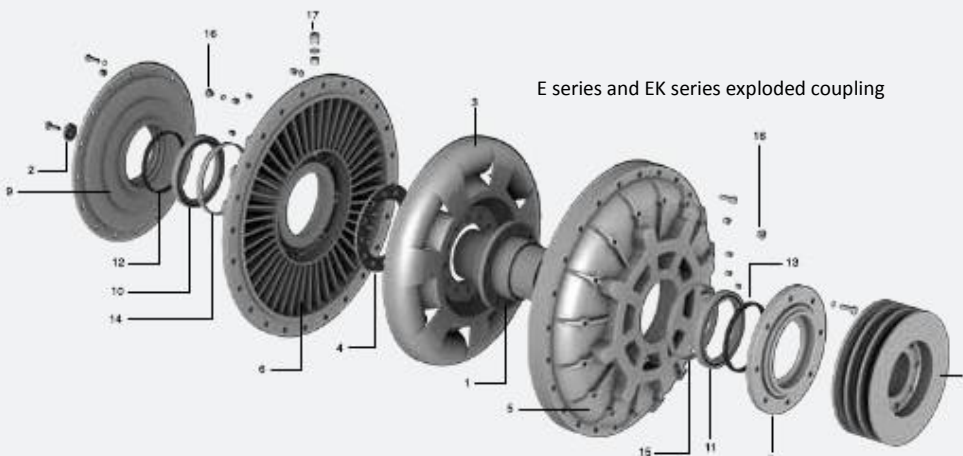
COUPLING SELECTION

Coupling selection is made according to rotation number and input power of the motor. Coupling that is suitable according to input power and rotation number required is chosen from the table.

Use of table: We find rotation number of our motor from the horizontal axis and draw a horizontal line. We find input power from the line axis that is vertical and we draw a horizontal line towards right. Coupling number written on the shaded area in which there is intersection gives us the size of the coupling



Example: Say that input rotation of our motor is 1500 rpm and input power is 55 kW, first we find 1500 in the horizontal axis. We draw a vertical line from that point. Then, we find 55 kW from the vertical axis. We draw a horizontal line towards right from there. Since this intersection point is the area in which 424 type coupling is shaded, we choose 424 type coupling.



E series and EK series exploded coupling

EX connection type

EV connection type

WEARABLE PARTS			MAIN PARTS OF COUPLING				
Poz. no	Description	E	EK	Poz. no	Description	E	EK
10	Bearing	X	X	1	Coupling hub	X	X
11	Bearing	X	X	2	Motor stabilizer	X	
12	Mat	X	X	3	Mid-styrofoam	X	X
13	Mat	X	X	4	Compression clamp	X	X
14	Bearing plate	X	X	5	Rear cover	X	X
15	Bearing plate	X	X	6	Front cover	X	X
16	Safety plug	X	X	7	Mat cover	X	X
17	Oil plug	X	X	8	Hoop		X
				9	Bearing cover	X	X

HYDRAULIC COUPLING



AREA OF USE

Material Grinding Systems: Band conveyor, bridge, cranes, port loading systems
Mining: chain and armoured face conveyor, gallery laying machines, elevator with bucket, crusher, pump, fan and bulk systems

Mining Processing Machines: Crusher, mills, moulding and screening machines, calibrator, air separator elevator

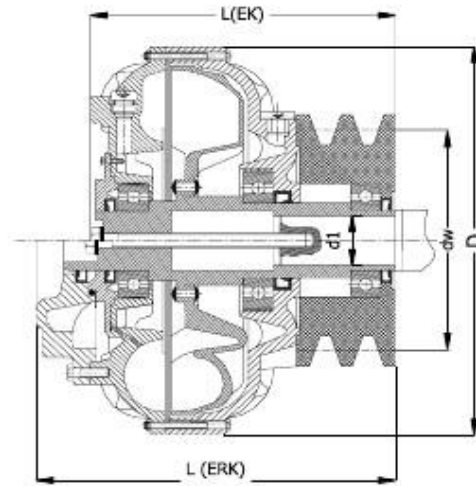
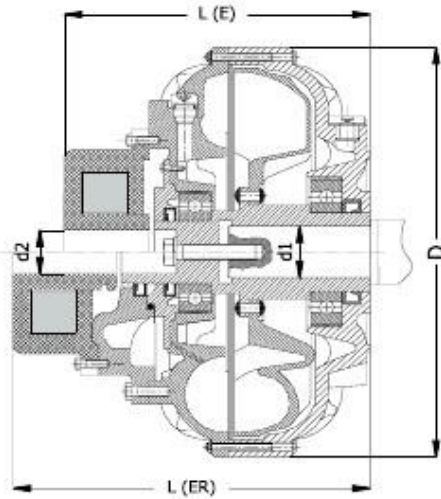
Chemical Industry: Centrifugal pumps, fan, blower, mixer, compressor, separator, pump

Machinery Industry: Textile machines, wiring machines, extruder kit bench, pumping, fan, crane, balance machines

Transfer Vehicles: Tractor, piler, car

Iron-Steel Industry: Conveyor, mixer, rolling

Shipping: Propeller systems

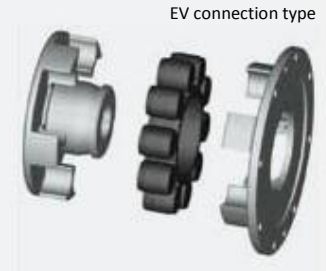
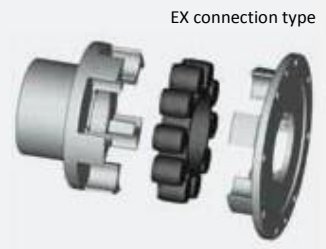
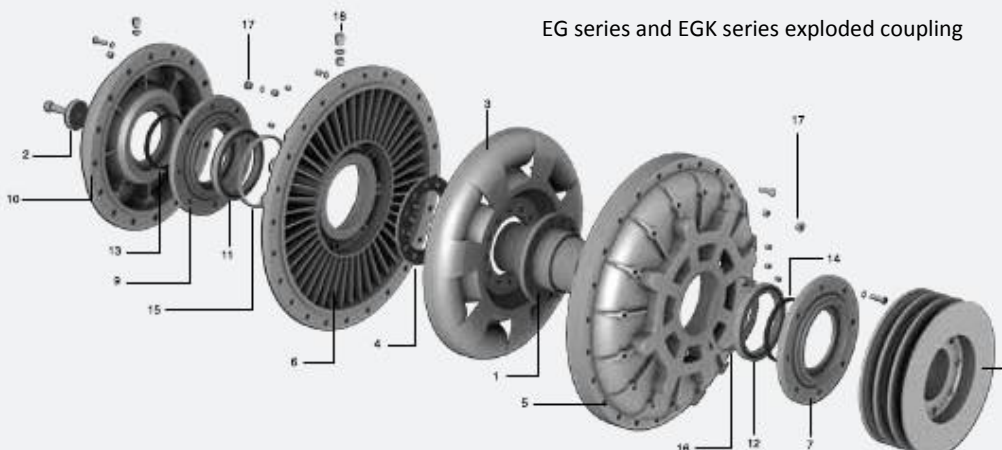


TYPE	COUPLING CODE	D	d1	D2	L (E)	Weight (kg)	L (ER)	Weight (kg)
E	188	240	28	28	270	6,0	-	-
E	222	282	23	42	141	11,5	-	-
E/ER	276	332	33	42	198	18,5	240	20
E/ER	320	330	33	55	188	22,5	234	24
E/ER	368	430	55	65	290	42	360	45
E/ER	424	480	60	80	330	66	400	68
E/ER	489	555	75	90	330	92	480	95
E/ER	564	660	80	100	410	136	450	140
E/ER	652	740	125	125	489	215	536	225
E/ER	752	842	140	135	530	310	605	320

TYPE	COUPLING CODE	D	d1	Dw Min.	L(EK)	Weight (kg)	L(ERK)	Weight (kg)
EK	188	240	28	28	270	6,0	-	-
EK	222	282	23	42	141	11,5	-	-
E/ERK	276	332	33	42	198	18,5	215	20
E/ERK	320	330	33	55	188	22,5	230	22
E/ERK	368	430	55	65	290	42	265	45
E/ERK	424	480	60	80	330	66	345	68
E/ERK	489	555	75	90	330	92	400	95
E/ERK	564	660	80	100	410	136	460	140
E/ERK	652	740	125	125	489	215	530	225
E/ERK	752	842	140	135	530	310	610	320

D2 can be changed according to customer desire, d1 can be changed according to motor mile.

Coupling size can be changed according hoop channel number and belt type.



WEARABLE PARTS				MAIN PARTS OF COUPLING			
Poz. no	Description	E	EK	Poz. no	Description	E	EK
11	Bearing	X	X	1	Coupling hub	X	X
12	Bearing	X	X	2	Motor stabilizer	X	X
13	Mat	X	X	3	Mid-styrofoam	X	X
14	Mat	X	X	4	Compression clamp	X	X
15	Bearing plate	X	X	5	Rear cover	X	X
16	Bearing plate	X	X	6	Front cover	X	X
17	Safety plug	X	X	7	Mat cover	X	X
18	Oil plug	X	X	8	Hoop	X	X
				9	Bearing cover		X



402 1/28
ELBOW CRAZY DANCE REDUCER



1/1.55 37 Kw
KAMIKAZE REDUCER



802 1/15
ELBOW CRAZY DANCE REDUCER



YACHT TRANSMISSION BOX
BEVELOID GEARS



202 1/24
ELBOW TUNNEL MOULD REDUCER



TOWER ROTATION REDUCER
ER528 i:1/102 TORQUE NM 4500 POWER 0,47 KW



302 1/31
ELBOW TUNNEL MOULD REDUCER

Our firm makes production of Storm Howitzer Final Drive as the subcontractor of MKE. It has undertaken design and production for Otokar Tank Prototype final drive and it continues design and production service for various gear boxes for Altay tank. It provides services to TAI as gear and transmission organs (ANKA and Drone Helicopter)





ERMAKSAN MAKİNE DIŐLI YEDEK PARÇA SAN. VE TİC. LTD. ŐTİ
ASO 1. Organize Sanayi Bölgesi Özbekistan Caddesi No:6 – 8 Sincan/Ankara
Tel: +90312 267 1777 Fax: +90312 264 0336 info@ermaksandisli.com.tr
www.ermaksandisli.com.tr