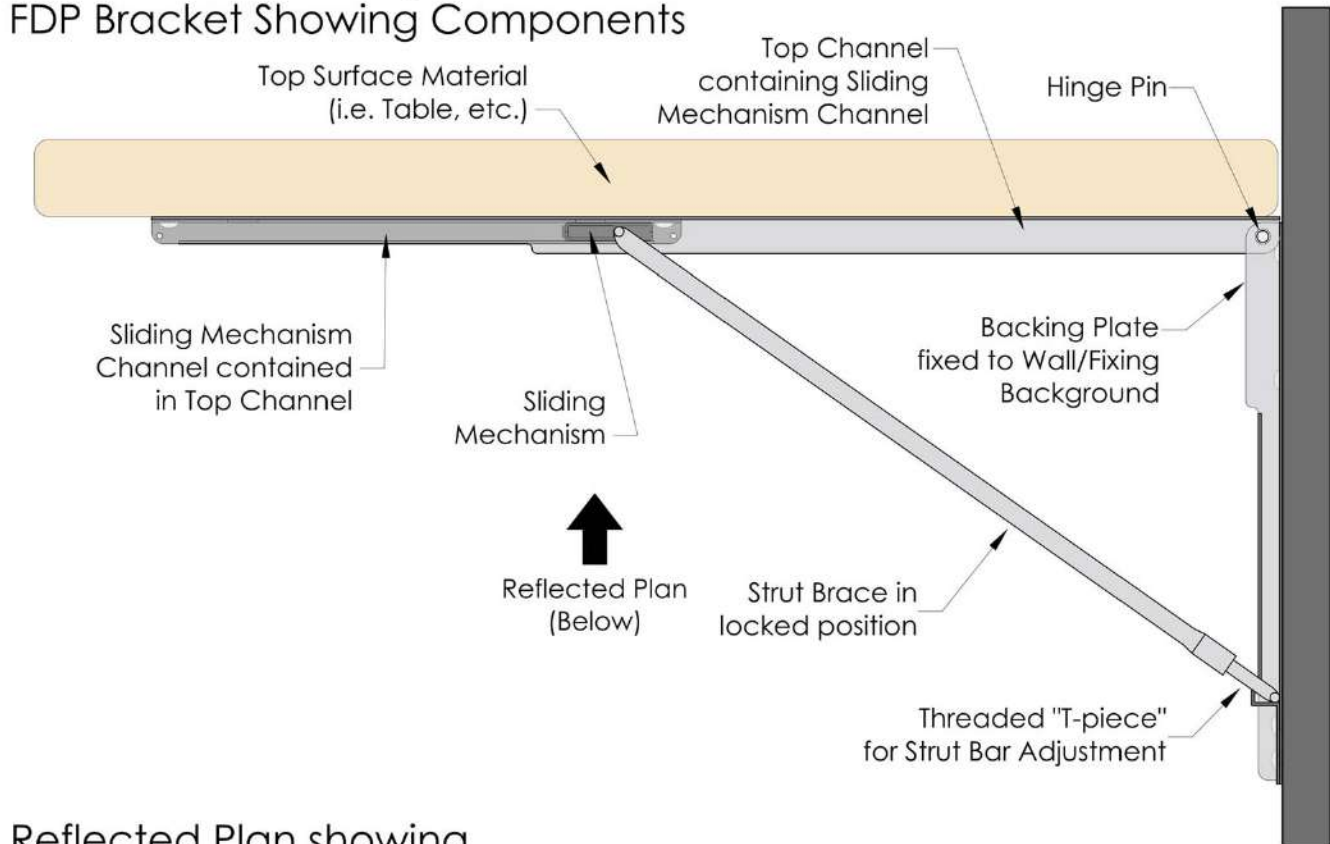




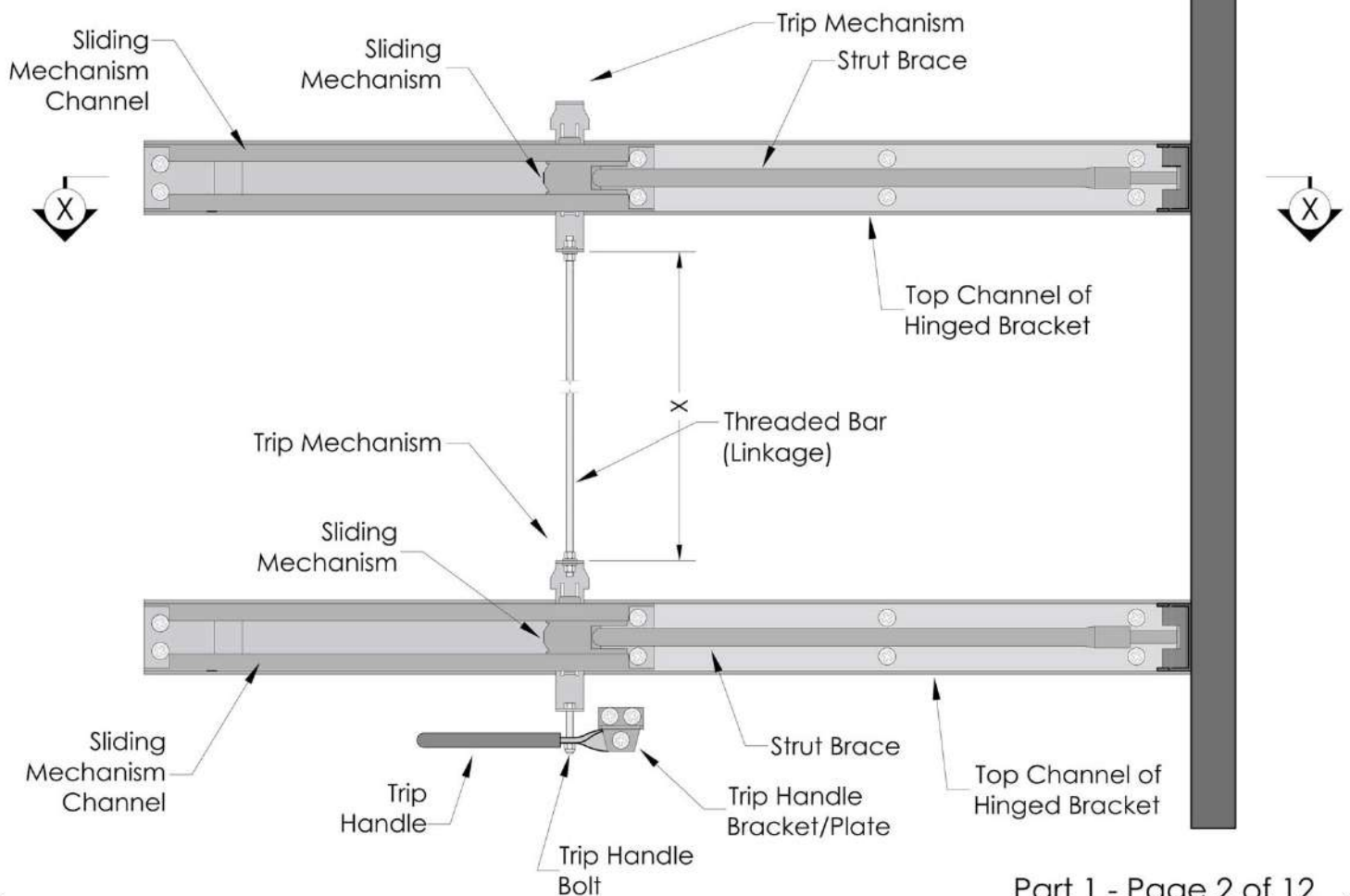
Eureka MFG Wall Mounted
Folding Brackets
Instructions PART 1

Installing the Trip Mechanism

Section X-X Through Standard FDP Bracket Showing Components



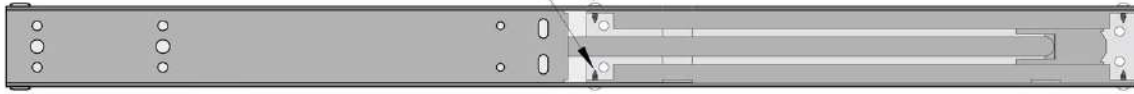
Reflected Plan showing Components in Linked Brackets



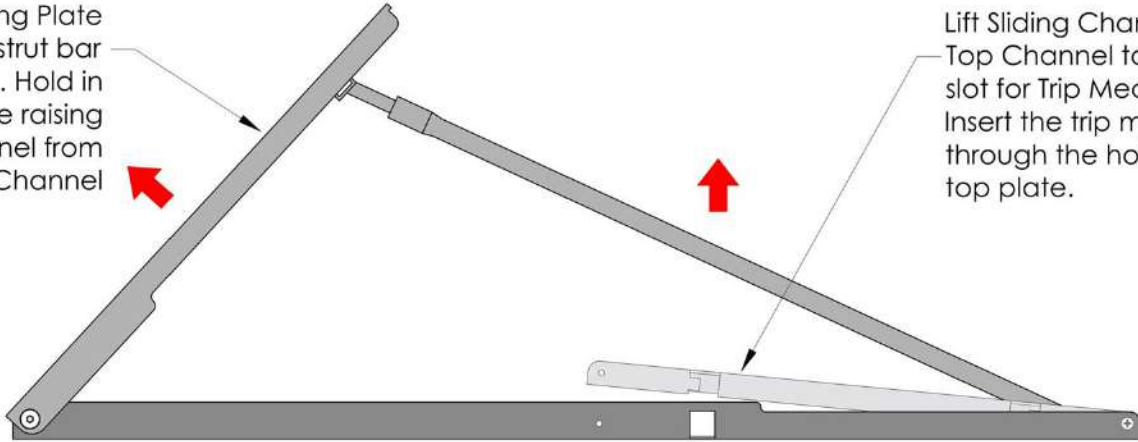
Step 1 Lift the sliding channel up from the top channel & insert the trip mechanism



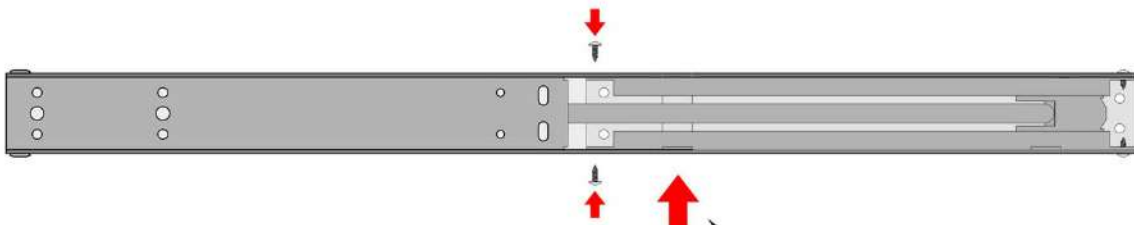
Remove screws with a "Phillips" screw-driver and keep in a safe place for re-use



Raise Backing Plate and allow strut bar to rise also. Hold in position while raising sliding channel from Top Channel



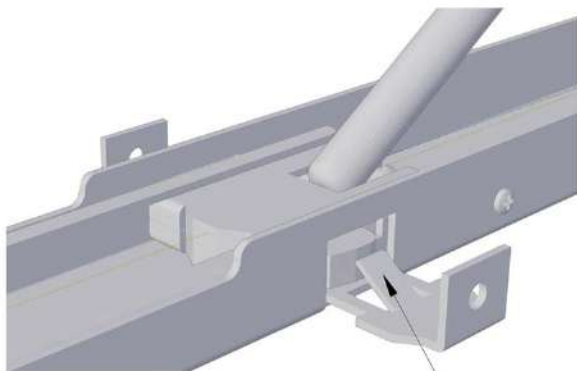
Lift Sliding Channel from Top Channel to expose slot for Trip Mechanism. Insert the trip mechanism through the holes in the top plate.



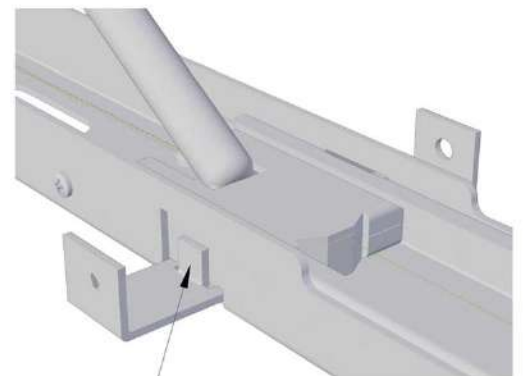
Trip Mechanism - Needs to be installed in channel before the remainder of the installation can be undertaken. Once the trip mechanism has been installed return the sliding channel to the top plate and re-install the side screws.



The Trip Mechanism will be under the sliding channel with the angular upstand on the side where the stopper pops out of the top plate



The angular upstand on the side where the stopper pops out of the top plate



The vertical upstand will be located outside of the sliding channel



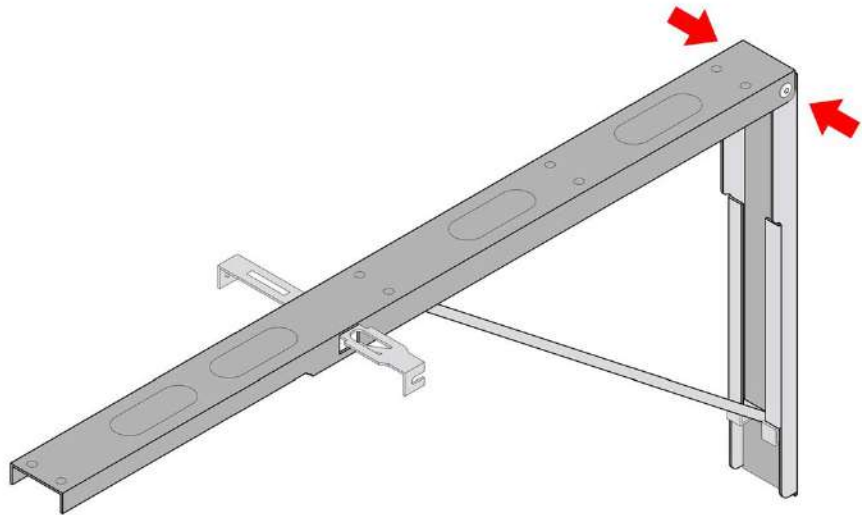
Eureka MFG Wall Mounted
Folding Brackets
Instructions PART 2

Bracket Installation Procedure

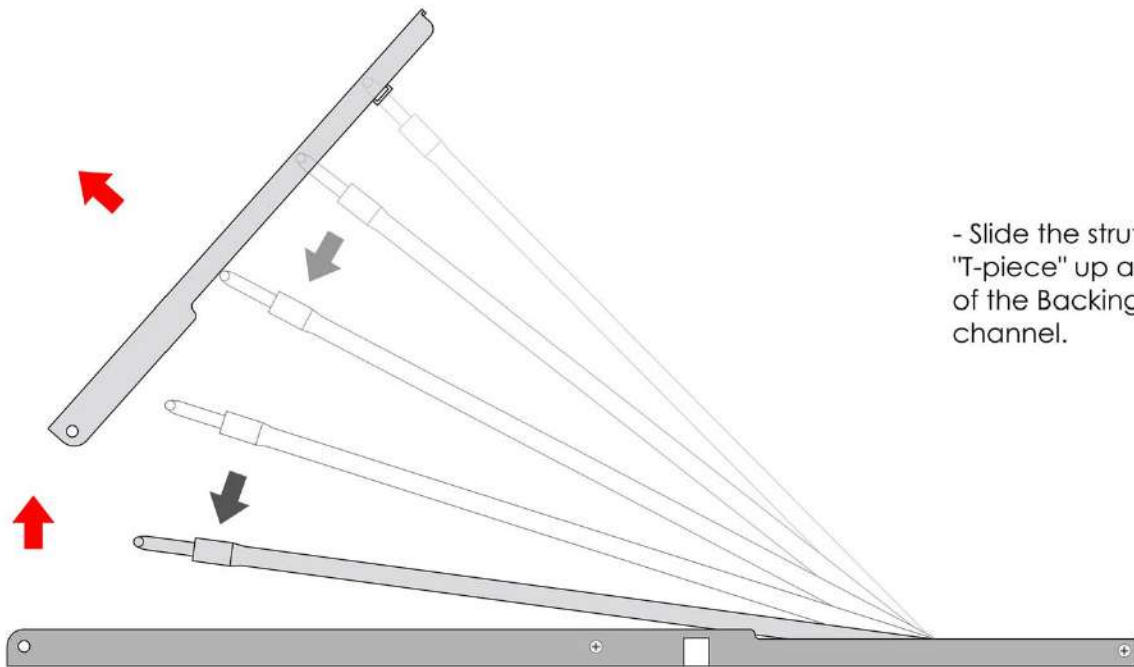
Fixing of the Brackets to the Wall or
Fixing Background including fixing the
Table Top between the Pair of
Brackets

Step 2

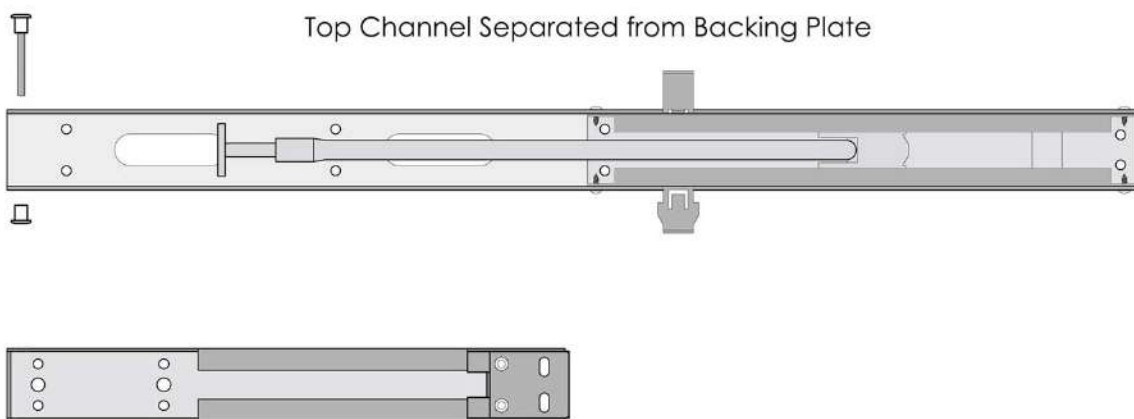
Separate the backing plate from the top channel



- Un-screw the Hinge Pins with 2 Allen Keys. Keep the Hinge Pin in a safe place for re-installation later.



- Slide the strut bar "T-piece" up and out of the Backing Plate channel.

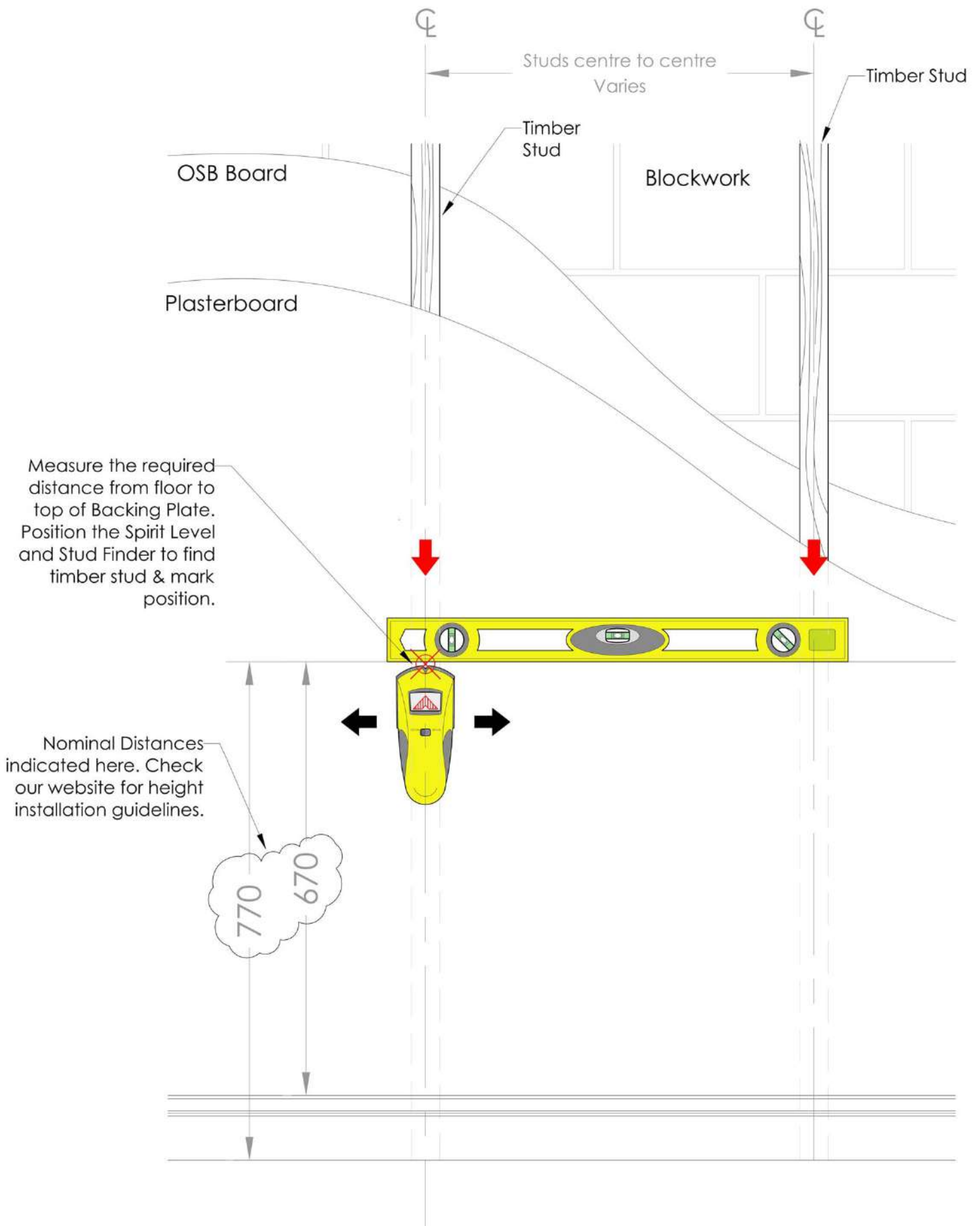


Top Channel Separated from Backing Plate

Backing Plate

Step 3 Find Studs (For timber frame) or mark fixing locations on fixing background

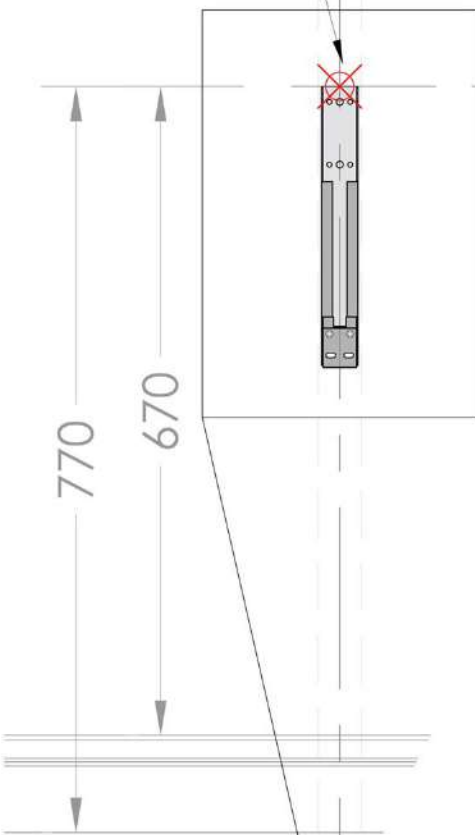
****IMPORTANT NOTE****: The Backing plates and top channels must be level and Paralell to function at optimum levels and to ensure the tripping mechansim operates in tandum.



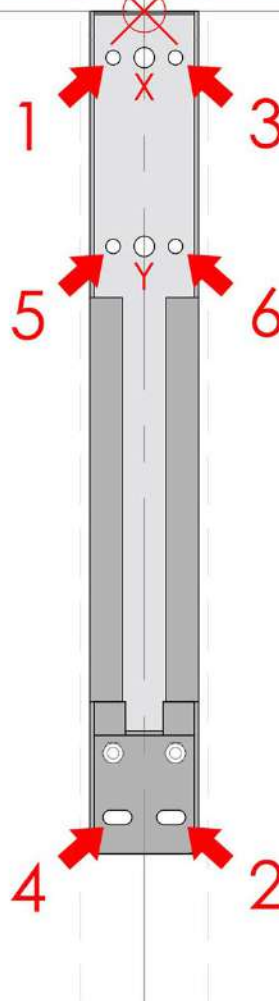
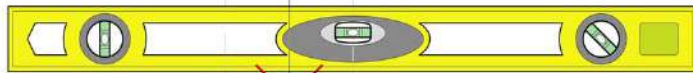
Step 4 Line up Backing Plate on Fixing background and pre-drill holes

Position first backing plate up to marked position & hold in place.

Studs centre to centre
Varies



Step 4 Pre-Drilling holes, Levelling Backing Plate and Install Screws



FOR TIMBER FRAME:

- Pre-drill hole & install fixing screw at location 1.
- Re-check level in horizontal and vertical planes.
- Pre-drill hole & install screw at location 2. The slot will allow for minor adjustment to plumb if required.
- Re-check levels again, then proceed to pre-drill and install screws to locations 3, 4, 5 & 6.

FOR MASONRY WALLS:

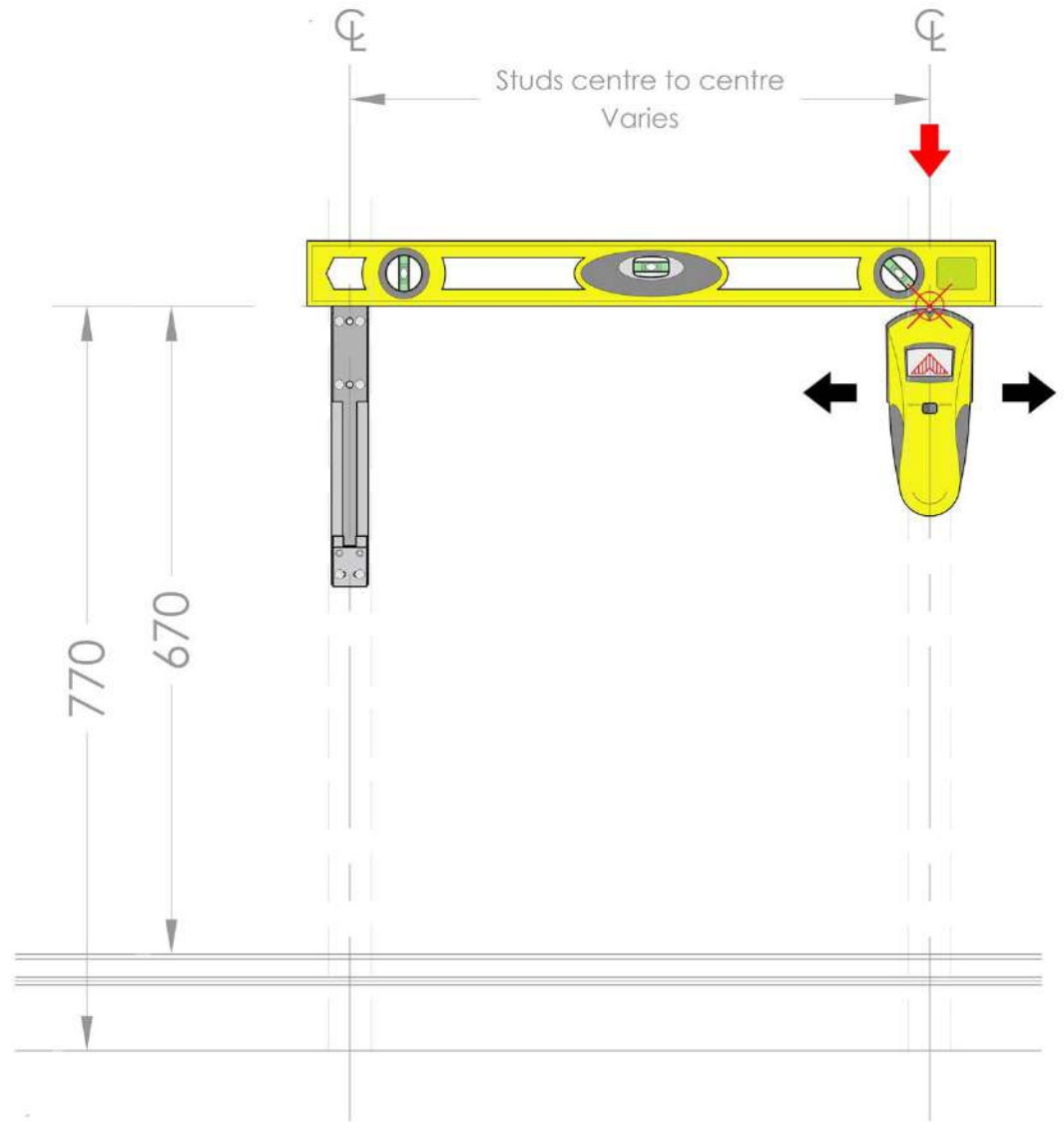
- Mark and pre-drill the centre holes X and Y with 6mm (1/8") drill bit.
- Install Masonry Screw with 3mm washer supplied into Hole X.
- Plumb Bracket again and mark holes at 2 & 4. Pre-drill hole 2, install plug and 50mm screw.
- Check Plumb again and proceed to install Masonry screw and washer at Y and 50mm screw and plug to location 4.
- Ensure level is maintained vertically and horizontally throughout the installation.

Important Note:

- Always check for the presence of buried services in receiving walls
- The backing plate pair must be level, plumb and parallel to function perfectly. The receiving wall or fixing surface must be reasonably level or flat prior to installing the brackets.

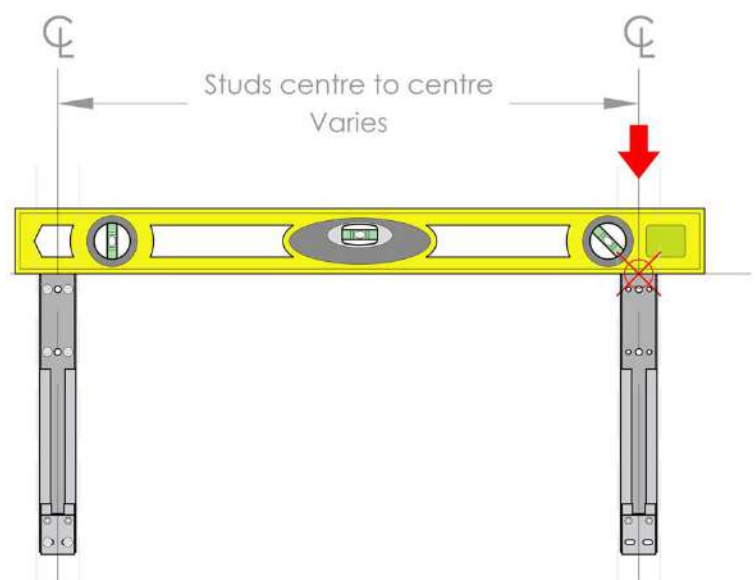
Step 5 Line up 2nd Backing Plate on Fixing background and mark location

- Use spirit level and stud finder to find next stud. Carefully mark position for second Backing Plate.



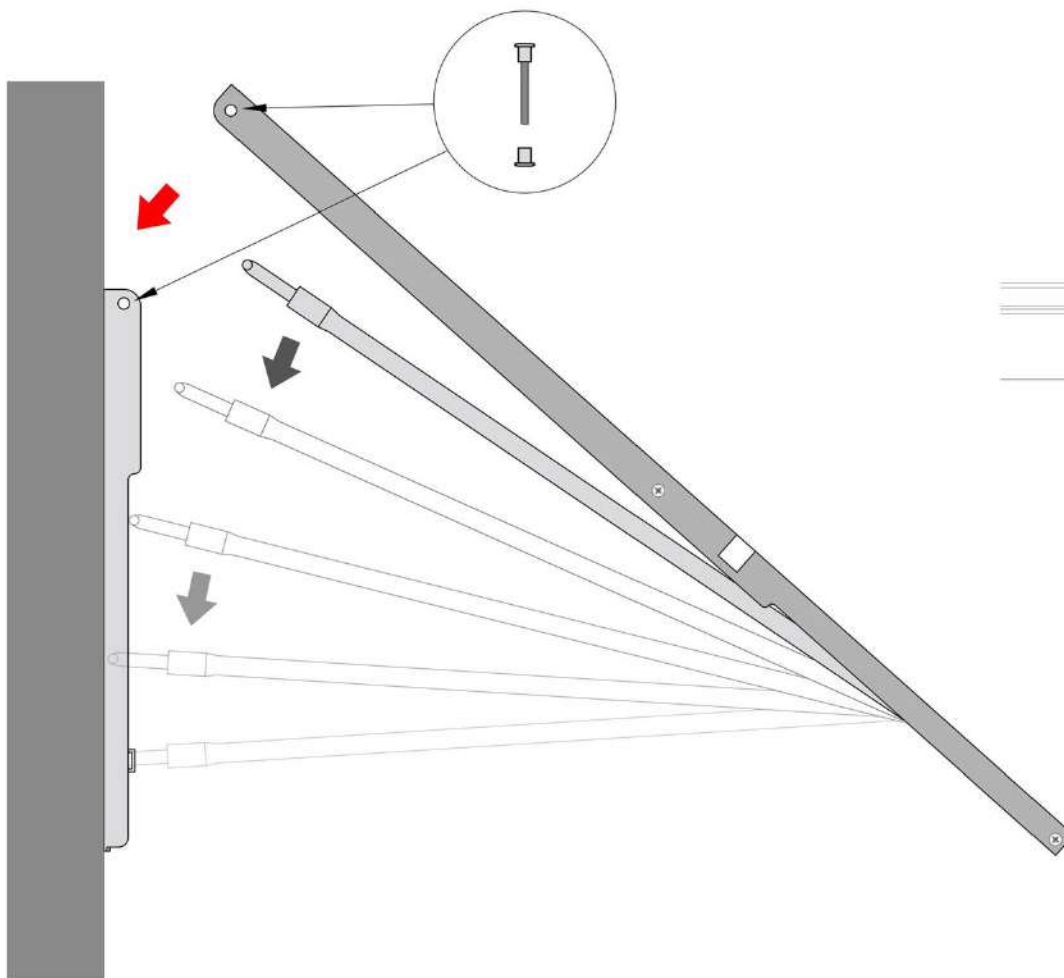
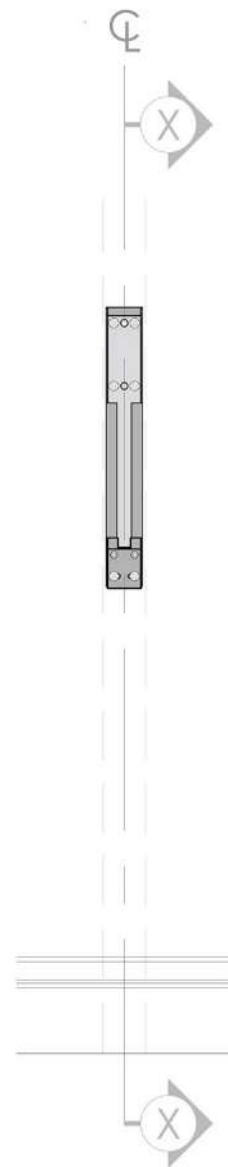
Step 6 Position 2nd Backing Plate, levelling across the 1st Plate, Pre-drill holes and install screws in 2nd Backing Plate

- Position second Backing Plate on marked stud and use spirit level to level across the top of both Backing Plates.
- Mark holes and repeat STEP 4 for the second Backing Plate.



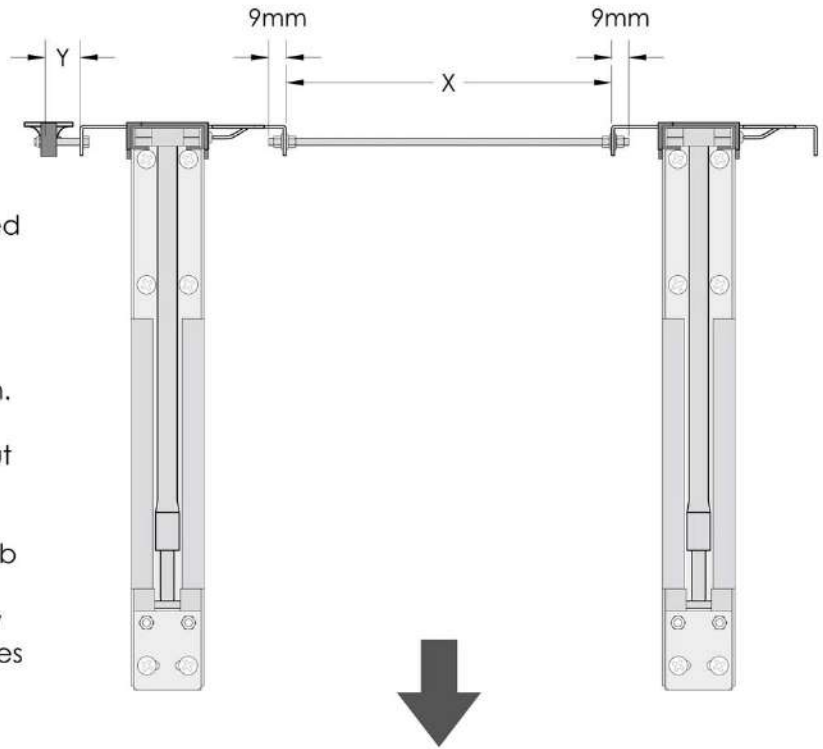
Step 7 Re-install Top Channels onto the wall Backing Plates

- Re-introduce the Top Channels to the Backing Plates. Slide the strut bar as necessary within the sliding channel to insert the "T-piece" into the Backing Plate channel.
- Line up the Hinge Pin holes in the Backing Plate & the Top Channel and insert the hinge pin. Proceed to tighten using Allen Keys. ****DO NOT OVER-TIGHTEN**** Tighten the hinge pin only until it "bites" against the channel.
- Apply Grease to the Sliding Channel within the path of the sliding mechanism and within the lower internal section of the Backing Plate channel. Wipe off excess grease.
- Fully open both brackets to ensure installation is correct. Repeat opening and closing to spread the grease.



Section X-X (Side View) Through Backing Plate fixed to wall and re-introduction of Top Channel

Step 8 Preparing and installing the Threaded Bar Linkage & Trip Handle Bolt



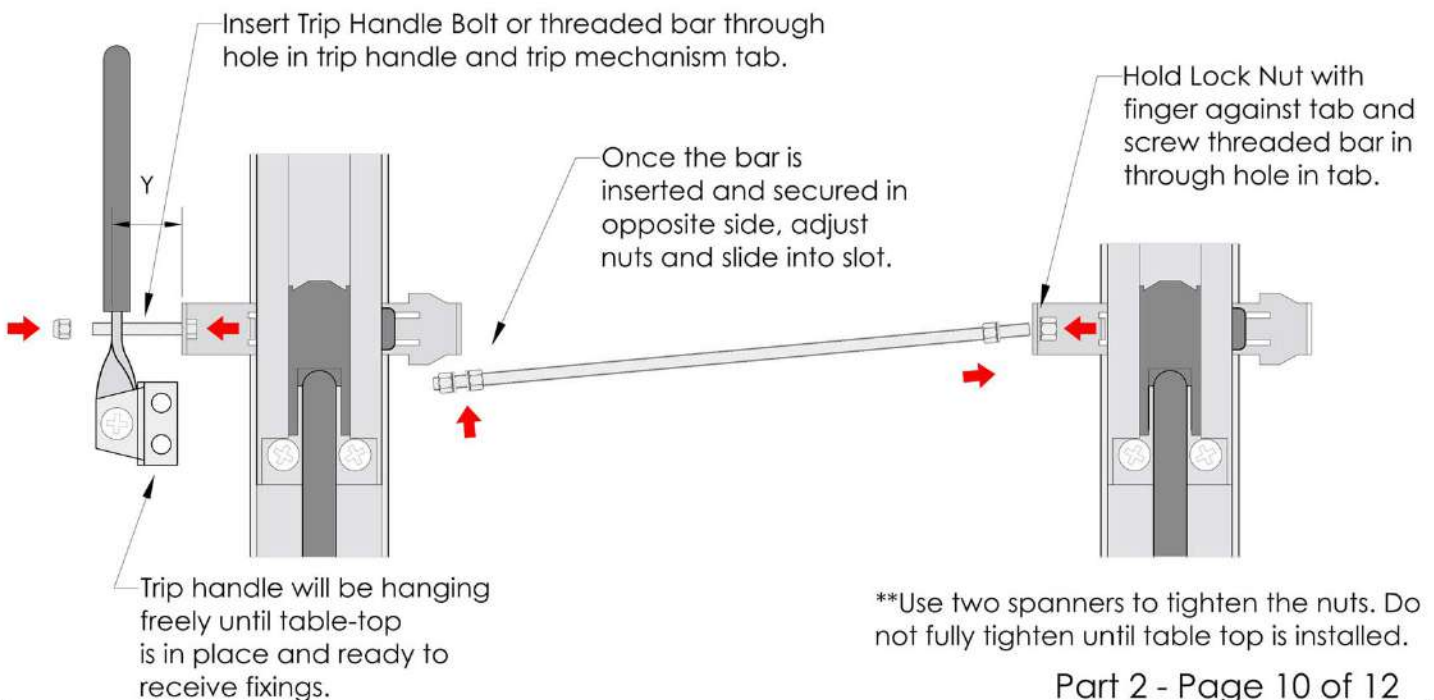
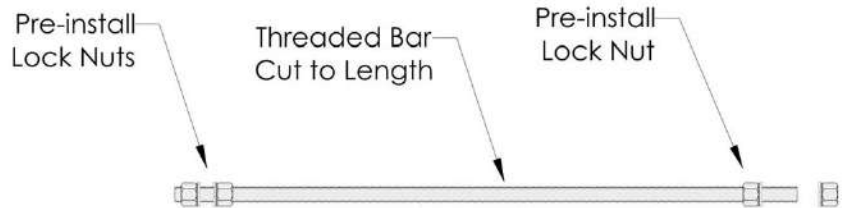
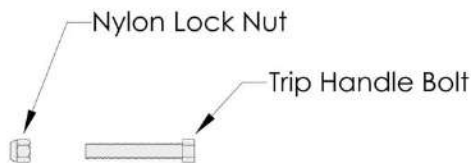
- Check that the Brackets are parallel and level before measuring the threaded bar length.

- Measure the distance "X" between the Trip Mechanism tabs. Add c. 18mm (9+9mm) for overall threaded bar length.

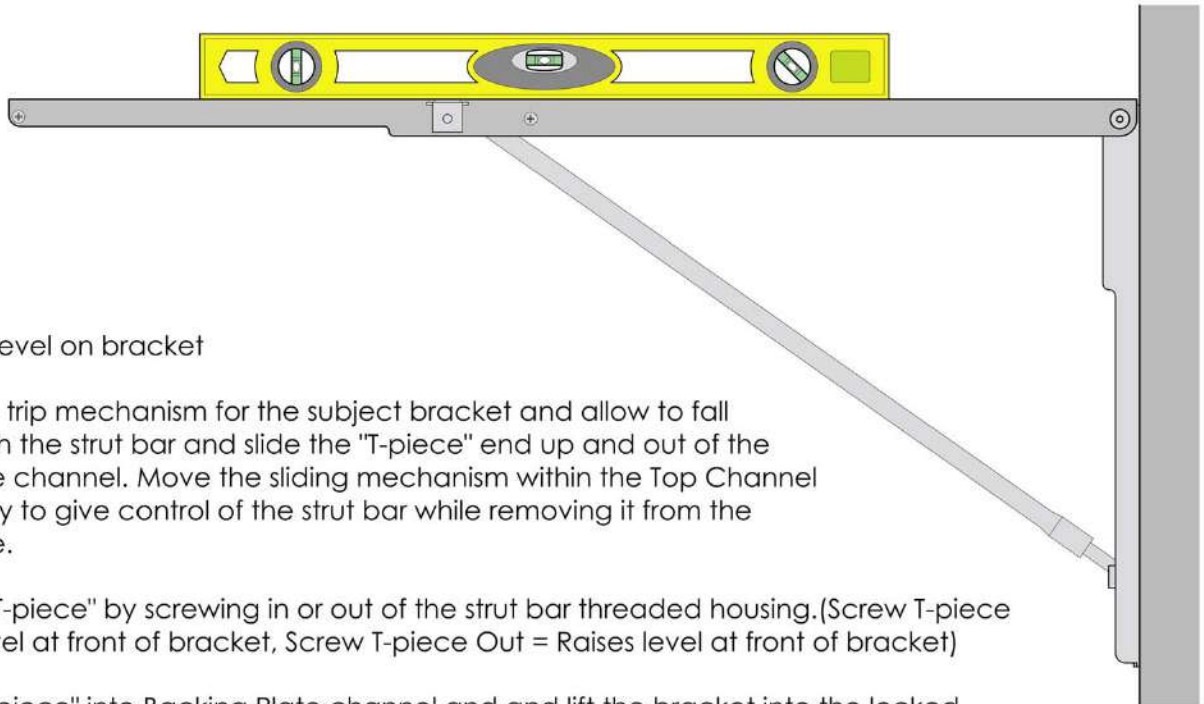
- Use Trip Handle bolt and Nylon Lock nut at trip handle side, OR,

Measure the required distance from tab to trip handle "Y" and add 18mm (9+9mm). Cut threaded bar and screw on Nylon Lock Nut to one side (Replaces Trip handle Bolt).

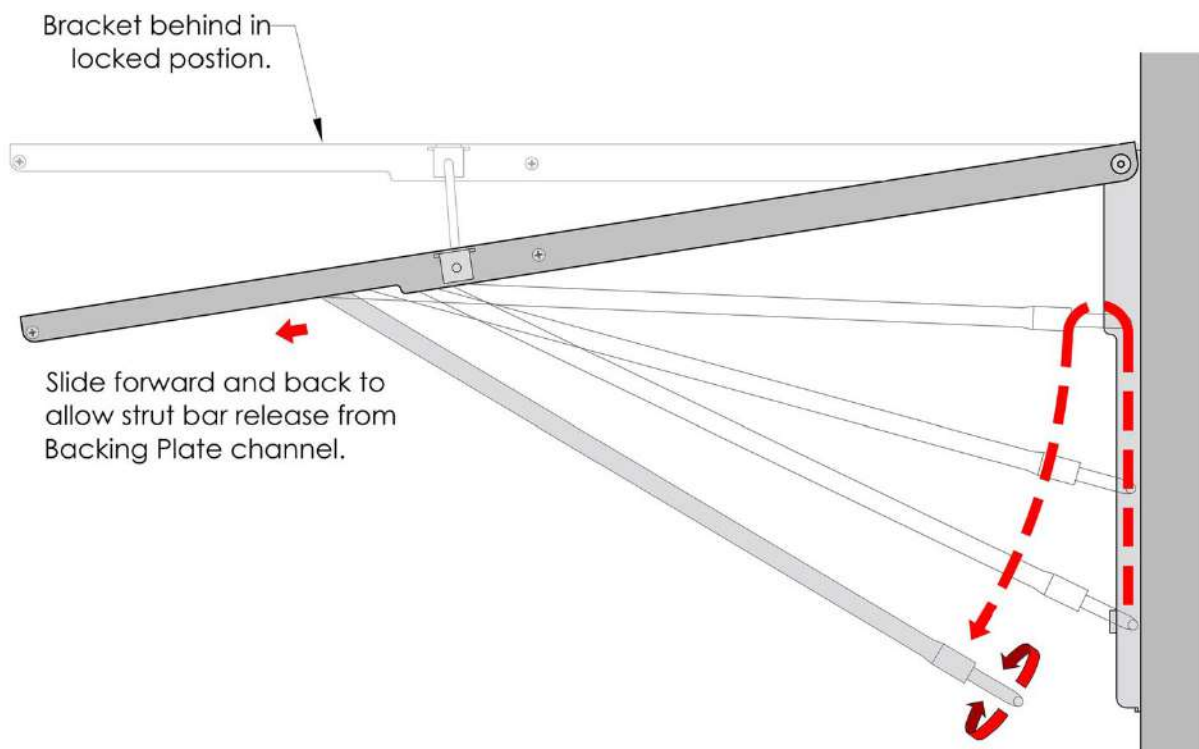
Threaded Bar with Nylon Lock Nuts if required to extend length from tab to trip handle.



Step 9 Levelling the Brackets and adjusting the Threaded "T-piece" in the strut bar

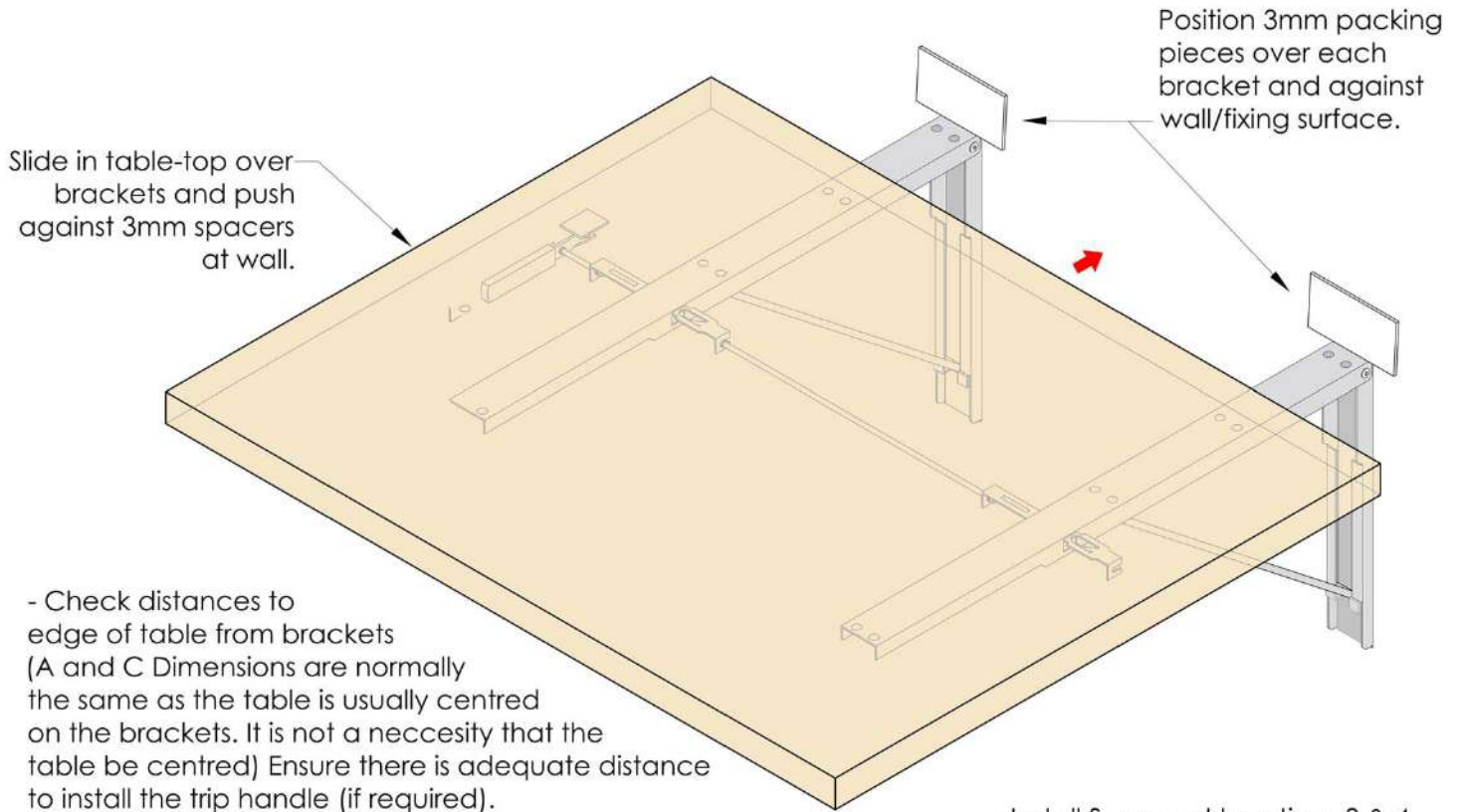


- Place spirit level on bracket
- Release the trip mechanism for the subject bracket and allow to fall slightly. Catch the strut bar and slide the "T-piece" end up and out of the Backing Plate channel. Move the sliding mechanism within the Top Channel as necessary to give control of the strut bar while removing it from the Backing Plate.
- Adjust the "T-piece" by screwing in or out of the strut bar threaded housing. (Screw T-piece in = Drops level at front of bracket, Screw T-piece Out = Raises level at front of bracket)
- Re-install "T-piece" into Backing Plate channel and lift the bracket into the locked position. Re-check level.
- Repeat steps as necessary until bracket is fully level.
- Repeat process for second bracket.



Step 10

Installing a table top on the brackets using 3mm spacers at the wall joint

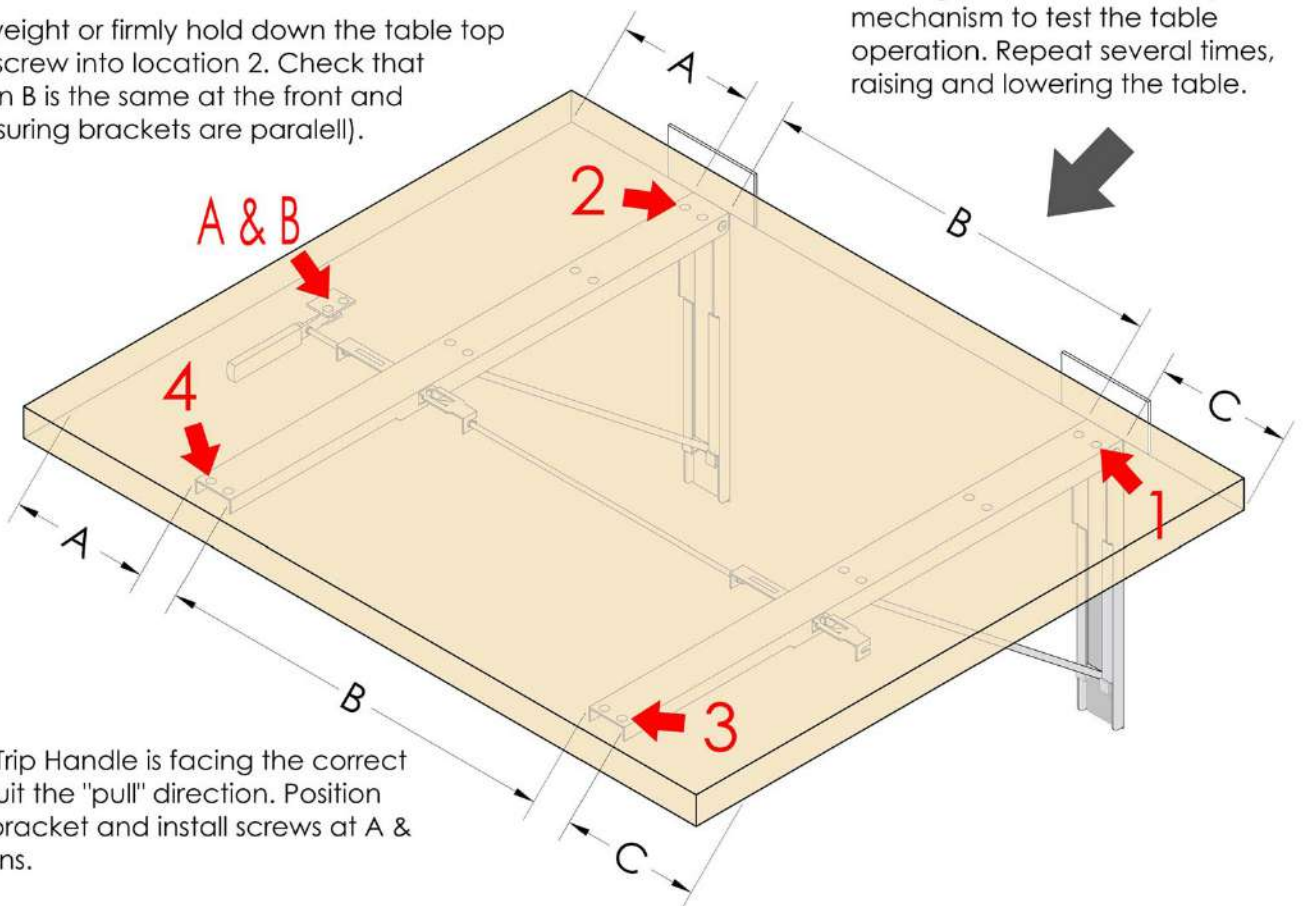


- Apply weight or firmly hold down the table top to install screw into location 1. Re-check square and ensure 3mm spacers are in place.

- Apply weight or firmly hold down the table top to install screw into location 2. Check that Dimension B is the same at the front and back (Ensuring brackets are parallel).

- Install Screws at locations 3 & 4.

- Tighten the nuts on the threaded linkage bar with spanners. Do not over-tighten. Release the trip mechanism to test the table operation. Repeat several times, raising and lowering the table.



- Ensure Trip Handle is facing the correct way to suit the "pull" direction. Position Handle bracket and install screws at A & B locations.

- Test Table Function repeatedly and apply grease to channels as necessary (Sliding Mechanism channel and lightly in Backing Plate Channel).