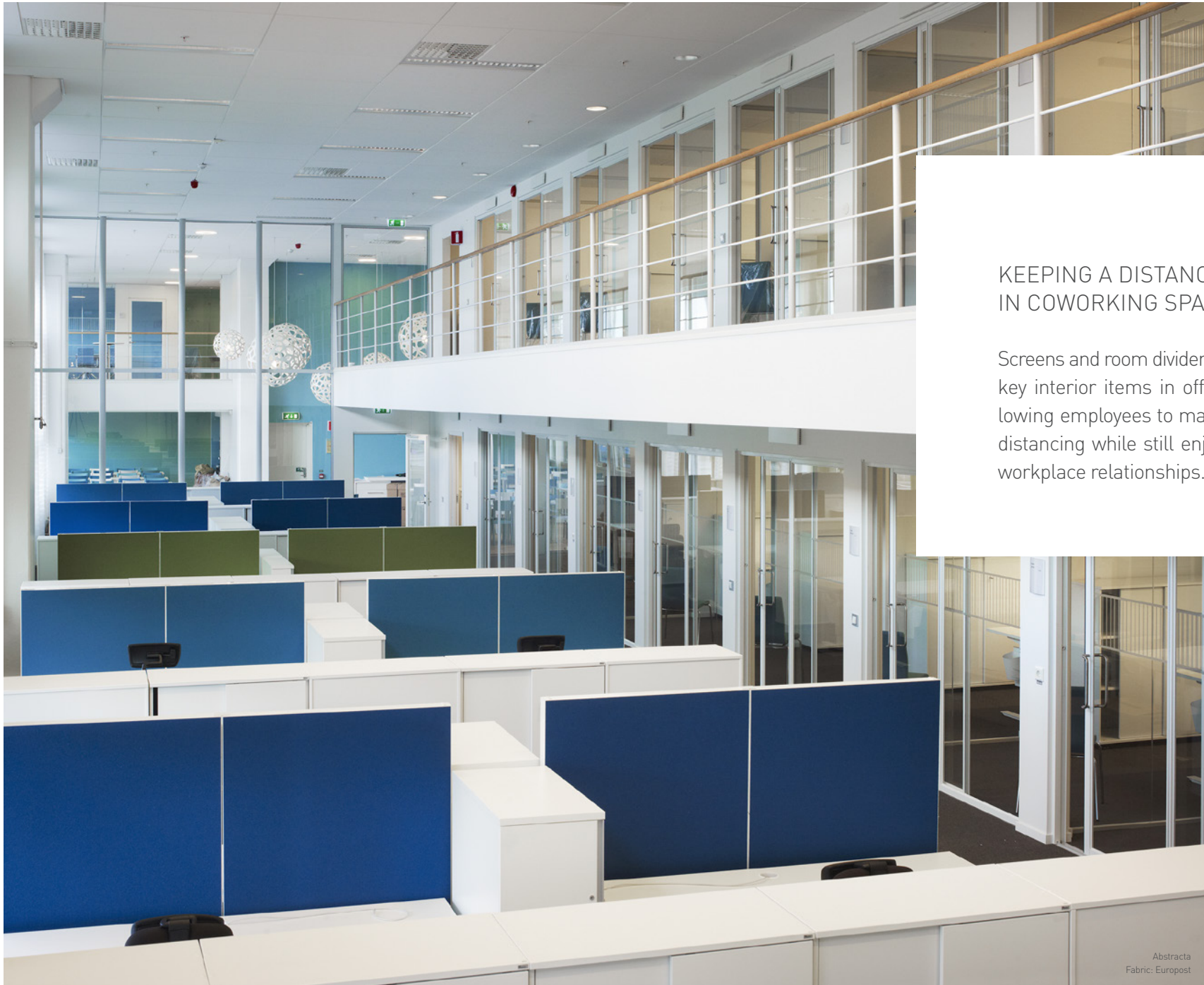


FABRICS FOR ROOM DIVIDERS & SCREENS

Gabriel®



KEEPING A DISTANCE IN COWORKING SPACES

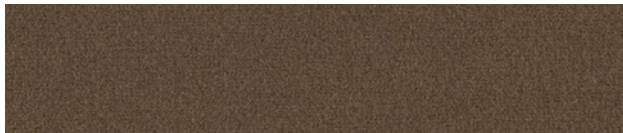
Screens and room dividers have become key interior items in office spaces allowing employees to maintain physical distancing while still enjoying valuable workplace relationships.

FABRICS FOR ROOM DIVIDERS

Create quiet, private spaces in office environments with floor-standing room dividers and Gabriel fabrics. Discreet and pleasing to the eye, Gabriel fabrics create tranquil visual experiences and enhance the feel of peace and quietude.



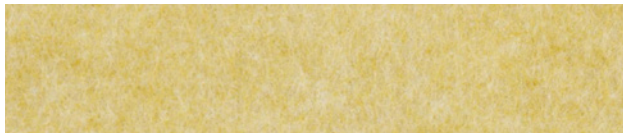
Soul Melange 68137



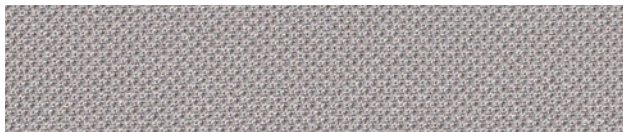
Thrill 61214



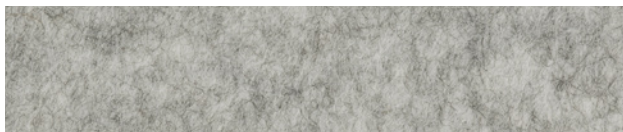
Step Melange 62057



Hush 62068



Atlantic 60141



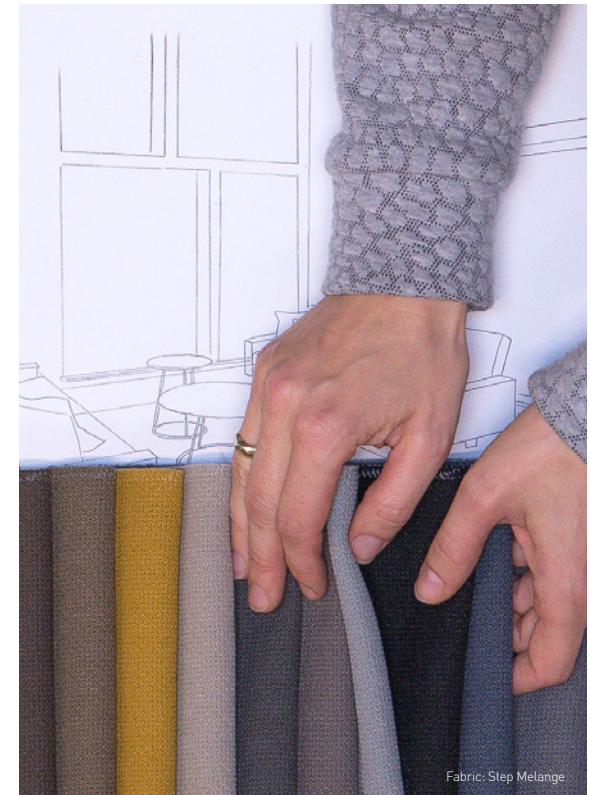
Soul Melange 21201



Actiu // photographer Ángel Segura
Fabric: Step Melange



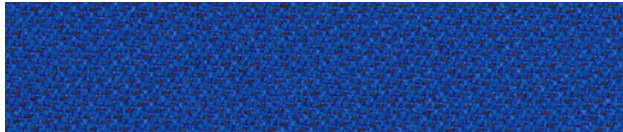
Gabriel
Fabric: Hush Stripe 25 / Embossing



Fabric: Step Melange

FABRICS FOR TABLE SCREENS

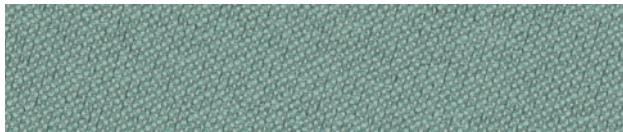
Table screens offer personal zones in public spaces and create privacy, room for concentration and a comfortable social distance. Combine table screens with beautiful Gabriel fabrics to maintain a visually attractive office environment.



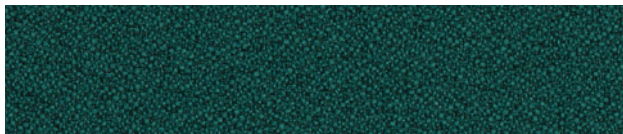
Tonal 66181



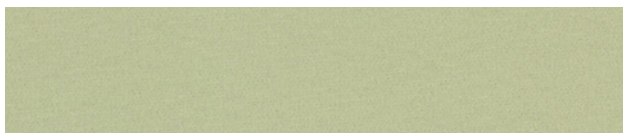
Soul 66103



Just 67086



Mica 2496-67017



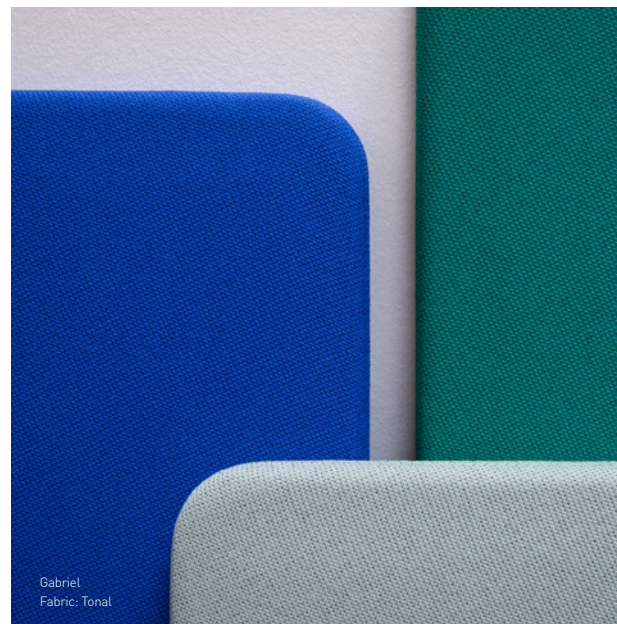
Thrill 68155



Hush 66170



Abstracta
Fabric: Event Screen



Gabriel
Fabric: Tonal



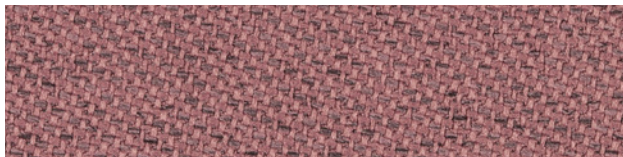
J&decor
Fabric: Twist

FABRICS FOR ACOUSTIC SOLUTIONS

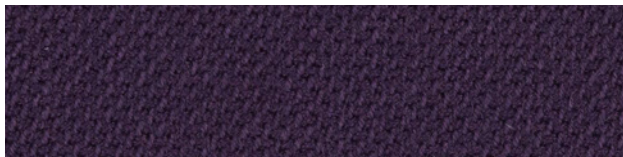
Gabriel acoustic solutions combine an exclusive aesthetic with acoustic performance to reduce noise levels and create comfortable work environments where people and productivity thrive.



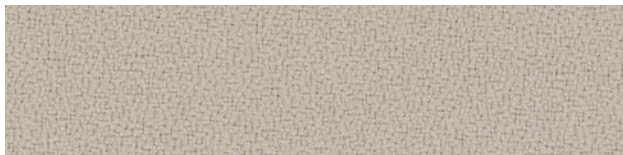
Fame 64169



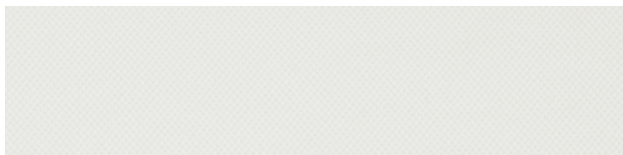
Chili 65111



Select 65077



Event Screen 61008



Atlantic 60061



Gabriel
Fabric: Event Screen & Mica



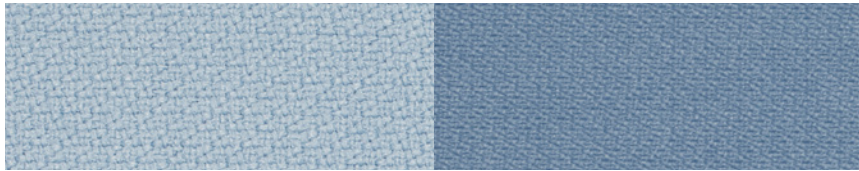
Lintex
Fabric: Thrill



SCREEN FABRICS

FAMILIES

Combinable fabrics



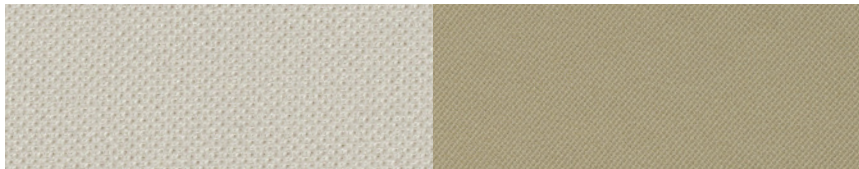
STEP // Available in 57 colours.

TWIST // Available in 18 colours.



STEP MELANGE // Available in 54 colours.

TWIST MELANGE // Available in 17 colours.

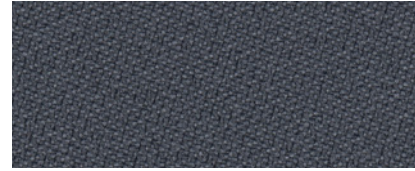


ATLANTIC // Available in 42 colours.

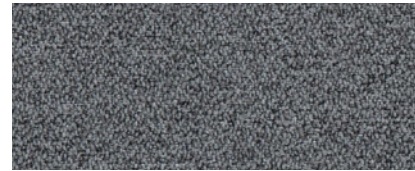
ATLANTIC SCREEN // Available in 22 colours.

CROSS FUNCTIONAL

Fabrics suitable for screens & seating



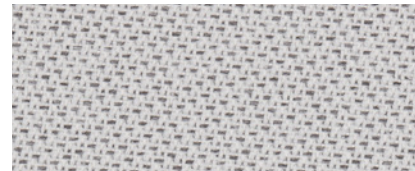
JUST // Available in 29 colours.



MICA // Available in 50 colours.



EVENT SCREEN // Available in 26 colours.



TONAL // Available in 30 colours.

SOFT EXPRESSIONS

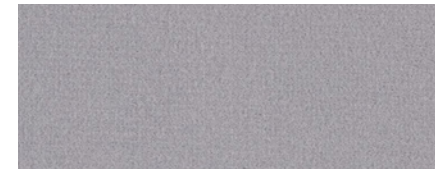
Soft fabrics



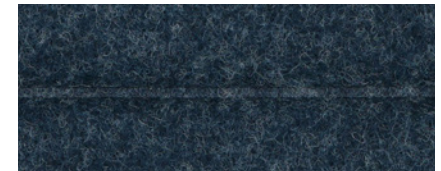
SOUL // Available in 37 colours.



SOUL MELANGE // Available in 37 colours.



THRILL // Available in 15 colours.



HUSH EMBOSSED // Available in 11 colours.

CLEANING AND PROTECTION AGAINST VIRUS AND BACTERIA

Sanitisers and disinfectants

While Gabriel recommends that national requirements for disinfection procedures are followed at all times, our fabrics can be treated with the following sanitisers and disinfectants:

WOOL

Ethanol

Gabriel wool-based fabrics will resist the use of ethanol in accordance with authority guidelines. Sanitising or disinfecting wool fabrics with ethanol will, however, remove the lanolin and may cause colour changes and reduce the lifetime of the fabric. Consequently, this method should only be applied if there are no other alternatives.

Quarantining furniture until there is no contamination risk is often a better alternative than using chemicals.



POLYESTER

Washing

Gabriel polyester fabrics are washable at high temperatures. Please refer to product specifications for further information on our [website](#).

Ethanol

Gabriel polyester fabrics will resist the use of ethanol in all concentrations for disinfection or sanitising.

Bleach

Gabriel polyester fabrics are resistant to bleach cleaning in a 10:1 dilution, based on 10 parts of water and one part bleach (5.25-6.25% sodium hypochlorite) or for products with 1000 ppm chlorine.

As bleach is a bleaching agent it may cause colour changes over time. How the bleach affects the colour depends on the fabric colour, frequency of disinfection, concentration of bleach solution and the final rinsing with clean water.

As bleach is an aggressive chemical, it may also have an adverse effect on the foam, glue or other upholstery materials.

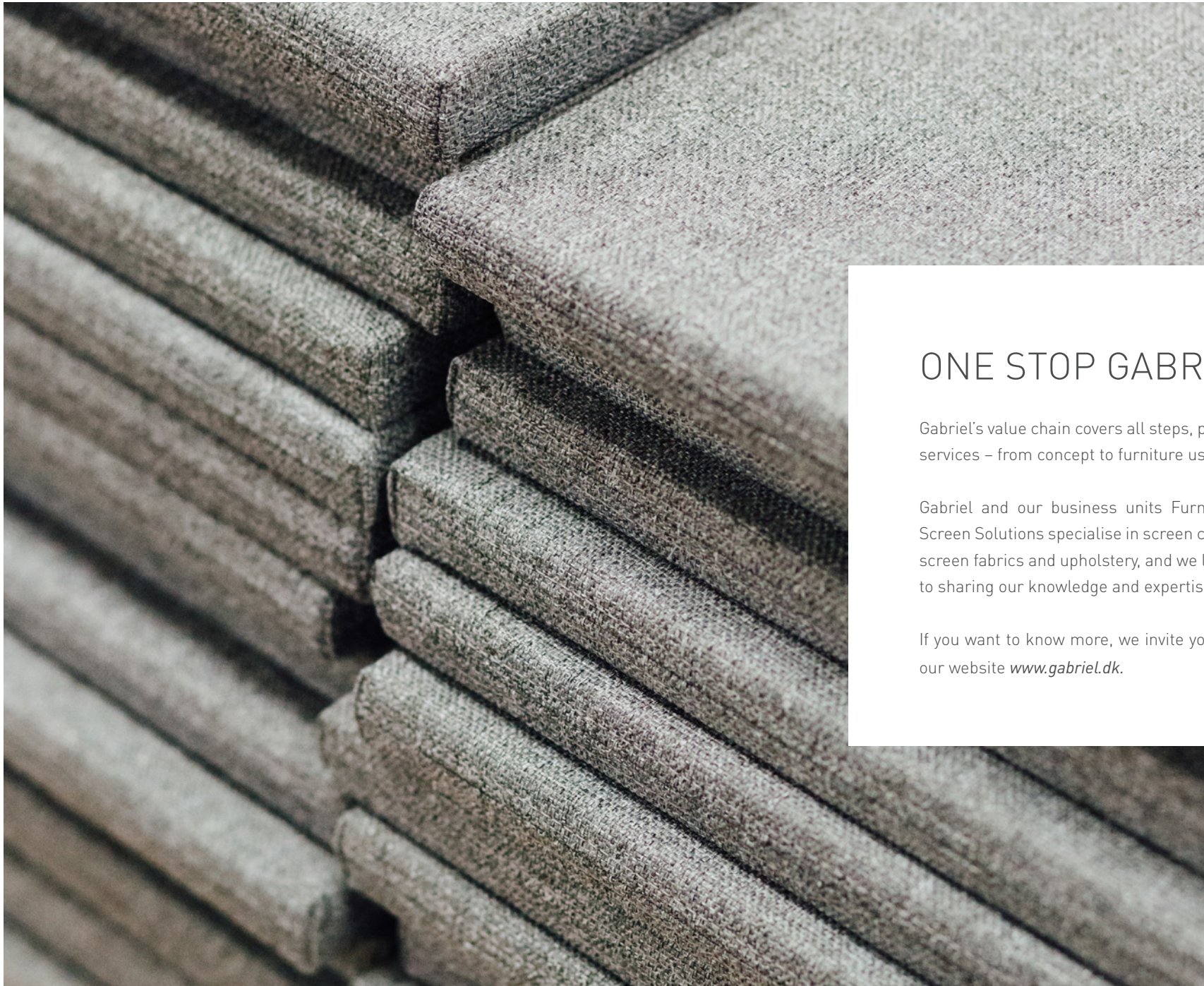
Quarantining the furniture until there is no contamination risk is often a better alternative than using chemicals.

Please note

Always rinse fabrics thoroughly with clean water after the use of disinfectants in order to remove any chemical residues remaining in the fabric after the recommended dwell time.

There are several other types of disinfectants and products on the market than the ones mentioned above. To ensure that the product will not cause adverse changes to the fabric, we recommend testing before general use.

Chemical disinfectants and sanitisers should in general only be used when absolutely necessary. To protect the environment, avoid using chemicals in higher concentrations than recommended for the specific purpose. For safety reasons and to protect your fabrics and furniture, always follow authority recommendations and the guidelines defined by the supplier of the disinfection chemical.



ONE STOP GABRIEL

Gabriel's value chain covers all steps, products and services – from concept to furniture user.

Gabriel and our business units FurnMaster and Screen Solutions specialise in screen construction, screen fabrics and upholstery, and we look forward to sharing our knowledge and expertise with you.

If you want to know more, we invite you to explore our website www.gabriel.dk.

**QUALITY.
SINCE
1851**

