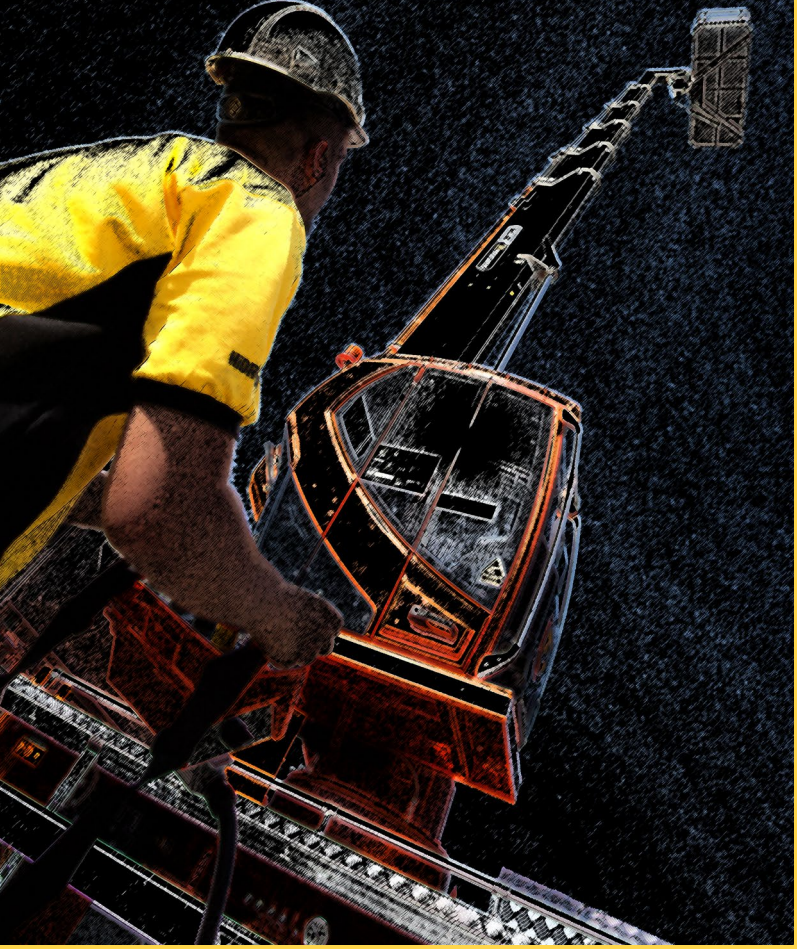


**TELESKOPIK
PLATFORMLAR**
TELESCOPIC PLATFORMS



HİDROKON

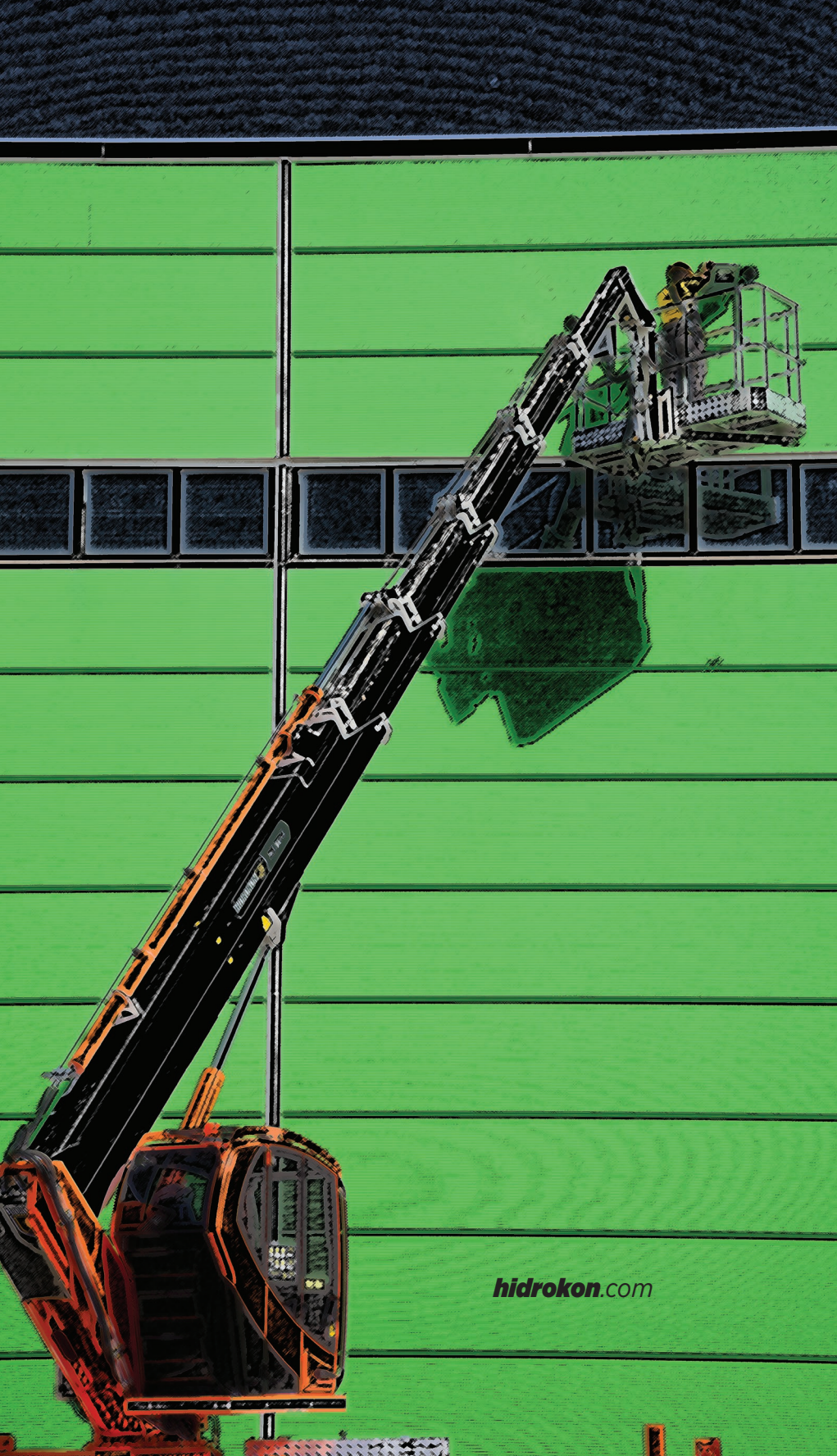


Türkiye'nin
Vinç Markası

Türkiye'nin
Vinç Markası

sizin için
üretiyoruz
we produce for you





hidrokon.com

HK 28 TP5

TELESKOPIK PLATFORMLAR
TELESCOPIC PLATFORMS



HK 28 TP5

Teknik Özellikler

TEMELE ÖZELLİKLER	
MAKSİMUM ÇALIŞMA YÜKSEKLİĞİ	28 MT
MAKSİMUM PLATFORM YÜKSEKLİĞİ	26 MT
MAKSİMUM YATAY UZANIM	14 MT
SEPET ÖZELLİKLERİ	
SEPET ÖLÇÜLERİ	850X1100X1400
MAKSİMUM YÜK	200 KG
SEPET DÖNÜŞ	± 65 °
SEPETTE MOTOR START-STOP	STANDART
220 V ELEKTRİK PRİZİ	STANDART
SEPETTE AŞIRI YÜK KONTROLÜ	—
AYDINLATMA LAMBASI	STANDART
BOM GRUBU	
UZATMA BOM SAYISI	5
EKLEM BOM UZATMA SAYISI	—
ANABOM AÇISI	85 °
EKLEM BOM AÇISI	—
FLY BOM AÇISI	—
BOM UZUNLUK VE AÇI KONTROLÜ	—
ÜST GRUP ELEKTRONİK ÇALIŞMA KONTROL SİSTEMİ	—
BOM İÇERİSİNDE KABLO VE HORTUM TAŞIMA SİSTEMİ	STANDART
DÖNÜŞ SİSTEMİ	
DÖNÜŞ AÇISI	± 235 °
KULE DÖNÜŞ KONTROLÜ	—
AYNA GENİŞLİĞİNDEN ÇIKMADAN DÖNME	STANDART
DENGE AYAKLARI	
ÖNDE VE ARKADA 2 UZATMALI AYAKLAR	—
AYAK UZATMA UZUNLUK KONTROLÜ	—
AYAK BASMA KONTROLÜ	STANDART
MAKSİMUM EĞİM AÇISI	3 °
MAKİNA DENGE KONTROLÜ	—
BOM İÇERİSİNDE KABLO VE HORTUM TAŞIMA SİSTEMİ	STANDART
TAŞIYICI ARAÇ	
ARACIN YÜKLÜ AĞIRLIĞI	8.5 T**
SEYİR HALİNDEKİ UZUNLUK	8120 MM **
SEYİR HALİNDEKİ YÜKSEKLİK	3145 MM **
SEYİR HALİNDEKİ GENİŞLİK	2260 MM **
RAMPA UZAKLAŞMA AÇISI	9 °**
HİDROLİK VE ELEKTRONİK SİSTEM	
KABİN	STANDART
TAM ORANSAL HİDROLİK KUMANDA	STANDART
ACİL DURUM EL POMPAŞI	STANDART
HAREKET BAŞLANGIÇ VE BİTİŞLERİNDE RAMPALAMA	STANDART
GEOMETRİK KONTROL SİSTEMİ	—
KABİN İÇİNDE GRAFİK EKREN	—
KABİN İÇİNDE MOTOR START-STOP	STANDART
JOYSTICK KUMANDA (KABLOLU)	STANDART
SEPETTE GRAFİK EKREN	—
OPSİYONEL ÖZELLİKLER	
WEBOSTA	OPSİYONEL
KABİN KALDIRMA	OPSİYONEL
ÇİFT AÇILIR SEPET	—
ALÜMİNYUM KAPAKLI KAŞA	—
SEPET ELEKTRİK İZOLASYONU	OPSİYONEL
HABERLEŞME	OPSİYONEL
RÜZGAR SENSÖRÜ	OPSİYONEL
PLASTİK PABUÇ TAKOZU	OPSİYONEL

**ARAÇ TİPİNE BAĞLI DEĞİŞKENLİK GÖSTERİR.

HK 28 TP5

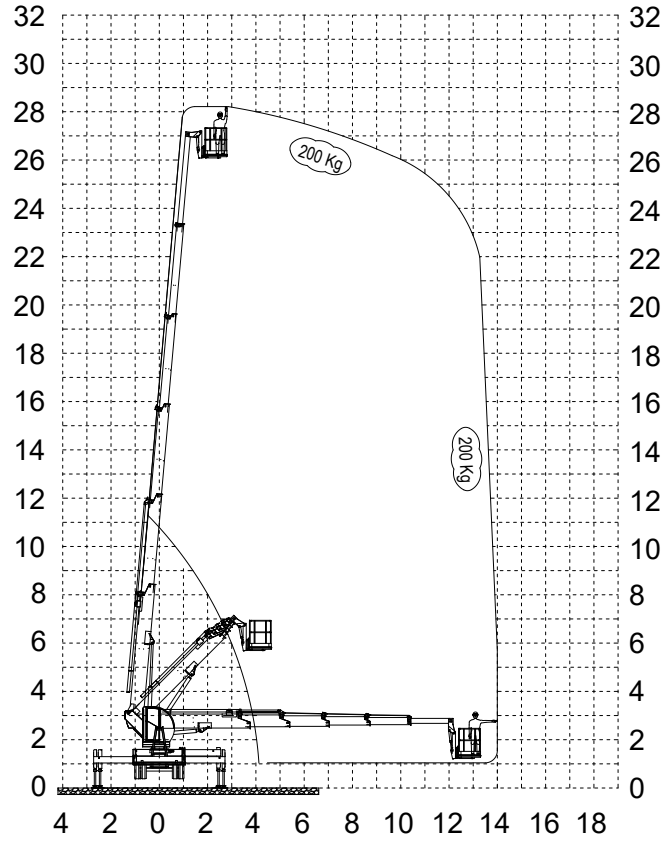
Technical Specifications

SPECIFICATIONS OF BASIC MODEL	
MAXIMUM WORKING HEIGHT	28 MT
MAXIMUM BASKET FLOOR HEIGHT	26 MT
MAXIMUM HORIZONTAL OUTREACH	14 MT
WORKMAN BASKET	
BASKET DIMENSIONS	850X1100X1400
MAXIMUM PERMISSIBLE LOAD	200 KG
SLEWING RANGE OF BASKET	± 65 °
ENGINE START/STOP IN THE BASKET	STANDART
220 V AC OUTLET	STANDART
OVERLOAD CONTROL ON BASKET	—
LIGHTENING	STANDART
BOOM GROUP	
NUMBER OF BOOM EXTENTION	5
UPPER BOOM OF EXTENTION	—
MAINBOOM ANGLE	85 °
UPPER BOOM ANGLE	—
FLY BOOM ANGLE	—
LENGHT AND ANGLE CONTROL OF BOOM	—
GEOMETRIC LIMIT CONTROL	—
CABLE AND HOSE CARRYING SYSTEM INSIDE OFF BOOM	STANDART
SLEWING GROUP	
SLEWING RANGE	± 235 °
SLEWING ANGLE CONTROL	—
SLEWING WITHIN MIRROR WIDTH	STANDART
OUTTRIGGERS	
TWO OUTTRIGGERS ON EACH SIDE	—
OUTRIGGER EXTENTION CONTROL	—
VERTICAL JACKING CONTROL	STANDART
MAXIMUM PERMISSIBLE INCLINATION	3 °
AUTOMATIC BALANCE LEVELLING CONTROL SYSTEM	—
CABLE AND HOSE CARRYING SYSTEM INSIDE OFF BOOM	STANDART
CARRIER VEHICLE	
TOTAL WEIGHT WITH PLATFORM	8.5 T**
LENGHT IN TRANSPORTATION	8120 MM **
HEIGHT IN TRANSPORTATION	3145 MM **
WIDTH IN TRANSPORTATION	2260 MM **
ANGLE OF SLOPE	9 °**
HYDRAULIC AND ELECTRICAL SYSTEM	
CABIN ON TURNTABLE	STANDART
FULLY PROPORTIONAL HYDRUALIC DISTRUBUTOR	STANDART
EMERGENCY HAND PUMP	STANDART
RAMPING ON MOVEMENT START AND STOP	STANDART
GEOMETRIC CONTROL SYSTEM	—
GRAPHIC DISPLAY ON CABIN	—
ENGINE START/STOP IN CABIN	STANDART
JOYSTICK CONTROL (WITH CABLE)	STANDART
GRAPHIC DISPLAY IN THE BASKET	—
OPTIONAL SPECIFICATIONS	
CAB HEATING	OPTIONAL
CAB LIFTING	OPTIONAL
TWO SECTION EXTENDABLE BASKET	—
BODY BY ALUMINIUM COVER	—
ISOLATED BASKET	OPTIONAL
COMMUNICATION DEVICE	OPTIONAL
WIND SENSOR	OPTIONAL
STABILIZER PADS	OPTIONAL

**TRUCK SHOWS DUE TO TYPE OF INSTABILITY.

HK 28 TP5

Çalışma Diyagramları
Working Diagrams

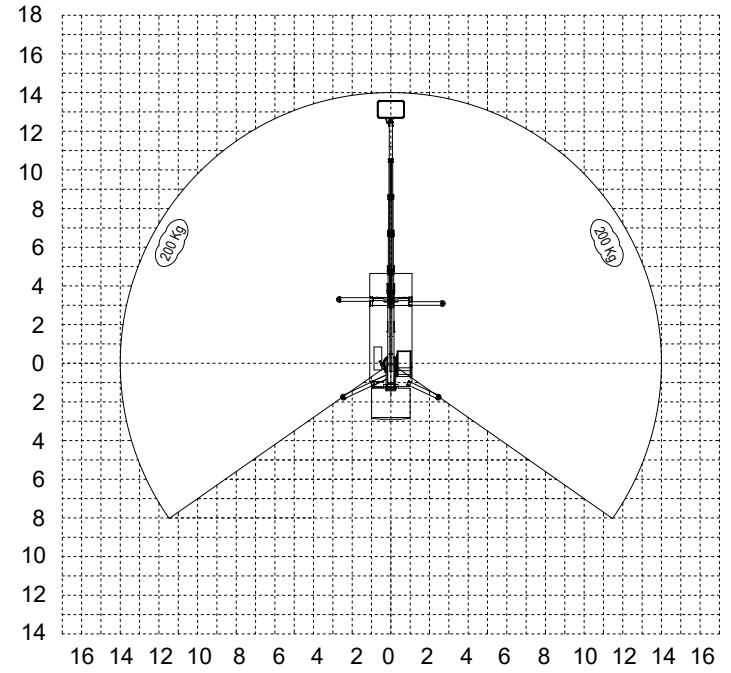


*UZANMA MESAFELERİNDE SEHİM DİKKATE ALINMAMIŞTIR.
*BOOM DEFLECTIONS ARE NOT CALCULATED.

Haber vermeksizin değiştirilebilir.
Subject to change without prior notice

HK 28 TP5

Çalışma Diyagramları
Working Diagrams



*UZANMA MESAFELERİNDE SEHİM DİKKATE ALINMAMIŞTIR.
*BOOM DEFLECTIONS ARE NOT CALCULATED.

Haber vermeksizin değiştirilebilir.
Subject to change without prior notice

Türkiye'nin
Vinç Markası

çözüm
ortağınız
your solution partner



hidrokon.com

HK 30 TP5

TELESKOPIK PLATFORMLAR
TELESCOPIC PLATFORMS



HK 30 TP5

Teknik Özellikler

TEMEL ÖZELLİKLER	
MAKSİMUM ÇALIŞMA YÜKSEKLİĞİ	30 MT
MAKSİMUM PLATFORM YÜKSEKLİĞİ	28 MT
MAKSİMUM YATAY UZANIM	15 MT
SEPET ÖZELLİKLERİ	
SEPET ÖLÇÜLERİ	850X1100X1400
MAKSİMUM YÜK	250 KG
SEPET DÖNÜŞ	± 65 °
SEPETTE MOTOR START-STOP	STANDART
220 V ELEKTRİK PRİZİ	STANDART
SEPETTE AŞIRI YÜK KONTROLÜ	—
AYDINLATMA LAMBASI	STANDART
BOM GRUBU	
UZATMA BOM SAYISI	5
EKLEM BOM UZATMA SAYISI	—
ANABOM AÇISI	85 °
EKLEM BOM AÇISI	—
FLY BOM AÇISI	—
BOM UZUNLUK VE AÇI KONTROLÜ	—
ÜST GRUP ELEKTRONİK ÇALIŞMA KONTROL SİSTEMİ	—
BOM İÇERİSİNDE KABLO VE HORTUM TAŞIMA SİSTEMİ	STANDART
DÖNÜŞ SİSTEMİ	
DÖNÜŞ AÇISI	± 235 °
KULE DÖNÜŞ KONTROLÜ	—
AYNA GENİŞLİĞİNDEN ÇIKMADAN DÖNME	STANDART
DENGE AYAKLARI	
ÖNDE VE ARKADA 2 UZATMALI AYAKLAR	—
AYAK UZATMA UZUNLUK KONTROLÜ	—
AYAK BASMA KONTROLÜ	STANDART
MAKSİMUM EĞİM AÇISI	3 °
MAKİNA DENGE KONTROLÜ	—
BOM İÇERİSİNDE KABLO VE HORTUM TAŞIMA SİSTEMİ	STANDART
TAŞIYICI ARAÇ	
ARACIN YÜKLÜ AĞIRLIĞI	10 T**
SEYİR HALİNDEKİ UZUNLUK	8450 MM **
SEYİR HALİNDEKİ YÜKSEKLİK	3145 MM **
SEYİR HALİNDEKİ GENİŞLİK	2260 MM **
RAMPA UZAKLAŞMA AÇISI	9 °**
HİDROLİK VE ELEKTRONİK SİSTEM	
KABİN	STANDART
TAM ORANSAL HİDROLİK KUMANDA	STANDART
ACİL DURUM EL POMPAŞI	STANDART
HAREKET BAŞLANGIÇ VE BİTİŞLERİNDE RAMPALAMA	STANDART
GEOMETRİK KONTROL SİSTEMİ	—
KABİN İÇİNDE GRAFİK EKLAN	—
KABİN İÇİNDE MOTOR START-STOP	STANDART
JOYSTICK KUMANDA (KABLOLU)	STANDART
SEPETTE GRAFİK EKLAN	—
OPSİYONEL ÖZELLİKLER	
WEBOSTA	OPSİYONEL
KABİN KALDIRMA	OPSİYONEL
ÇİFT AÇILIR SEPET	—
ALÜMİNYUM KAPAKLI KAŞA	—
SEPET ELEKTRİK İZOLASYONU	OPSİYONEL
HABERLEŞME	OPSİYONEL
RÜZGAR SENSÖRÜ	OPSİYONEL
PLASTİK PABUÇ TAKOZU	OPSİYONEL

**ARAÇ TİPİNE BAĞLI DEĞİŞKENLİK GÖSTERİR.

HK 30 TP5

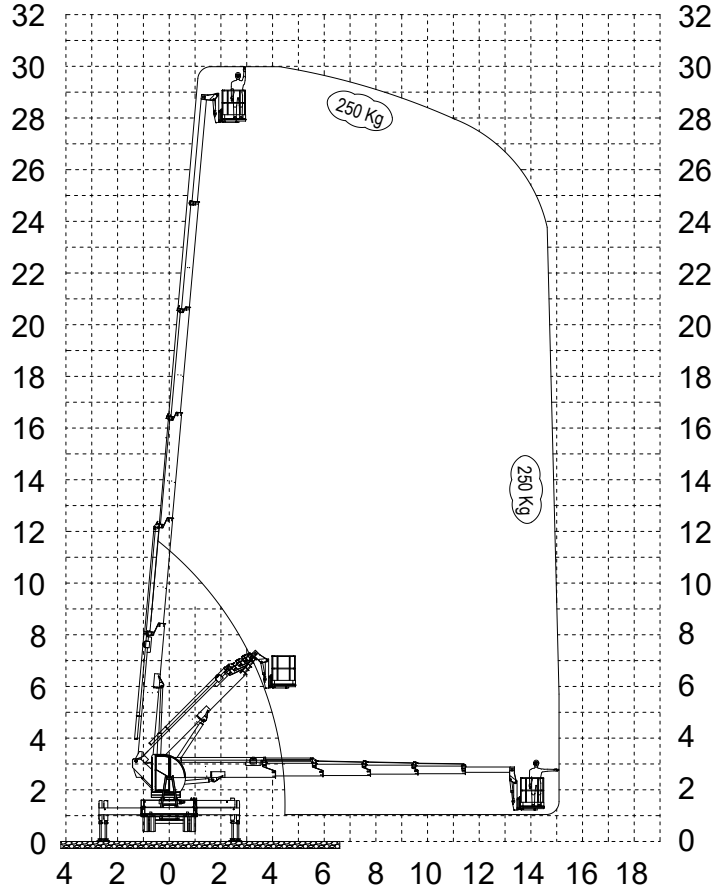
Technical Specifications

SPECIFICATIONS OF BASIC MODEL	
MAXIMUM WORKING HEIGHT	30 MT
MAXIMUM BASKET FLOOR HEIGHT	28 MT
MAXIMUM HORIZONTAL OUTREACH	15 MT
WORKMAN BASKET	
BASKET DIMENSIONS	850X1100X1400
MAXIMUM PERMISSIBLE LOAD	250 KG
SLEWING RANGE OF BASKET	± 65 °
ENGINE START/STOP IN THE BASKET	STANDART
220 V AC OUTLET	STANDART
OVERLOAD CONTROL ON BASKET	—
LIGHTENING	STANDART
BOOM GROUP	
NUMBER OF BOOM EXTENTION	5
UPPER BOOM OF EXTENTION	—
MAINBOOM ANGLE	85 °
UPPER BOOM ANGLE	—
FLY BOOM ANGLE	—
LENGHT AND ANGLE CONTROL OF BOOM	—
GEOMETRIC LIMIT CONTROL	—
CABLE AND HOSE CARRYING SYSTEM INSIDE OFF BOOM	STANDART
SLEWING GROUP	
SLEWING RANGE	± 235 °
SLEWING ANGLE CONTROL	—
SLEWING WITHIN MIRROR WIDTH	STANDART
OUTTRIGGERS	
TWO OUTTRIGGERS ON EACH SIDE	—
OUTRIGGER EXTENTION CONTROL	—
VERTICAL JACKING CONTROL	STANDART
MAXIMUM PERMISSIBLE INCLINATION	3 °
AUTOMATIC BALANCE LEVELLING CONTROL SYSTEM	—
CABLE AND HOSE CARRYING SYSTEM INSIDE OFF BOOM	STANDART
CARRIER VEHICLE	
TOTAL WEIGHT WITH PLATFORM	10 T**
LENGHT IN TRANSPORTATION	8450 MM **
HEIGHT IN TRANSPORTATION	3145 MM **
WIDTH IN TRANSPORTATION	2260 MM **
ANGLE OF SLOPE	9 °**
HYDRAULIC AND ELECTRICAL SYSTEM	
CABIN ON TURNTABLE	STANDART
FULLY PROPORTIONAL HYDRAULIC DISTRUBUTOR	STANDART
EMERGENCY HAND PUMP	STANDART
RAMPING ON MOVEMENT START AND STOP	STANDART
GEOMETRIC CONTROL SYSTEM	—
GRAPHIC DISPLAY ON CABIN	—
ENGINE START/STOP IN CABIN	STANDART
JOYSTICK CONTROL (WITH CABLE)	STANDART
GRAPHIC DISPLAY IN THE BASKET	—
OPTIONAL SPECIFICATIONS	
CAB HEATING	OPTIONAL
CAB LIFTING	OPTIONAL
TWO SECTION EXTENDABLE BASKET	—
BODY BY ALUMINIUM COVER	—
ISOLATED BASKET	OPTIONAL
COMMUNICATION DEVICE	OPTIONAL
WIND SENSOR	OPTIONAL
STABILIZER PADS	OPTIONAL

**TRUCK SHOWS DUE TO TYPE OF INSTABILITY.

HK 30 TP5

Çalışma Diyagramları
Working Diagrams

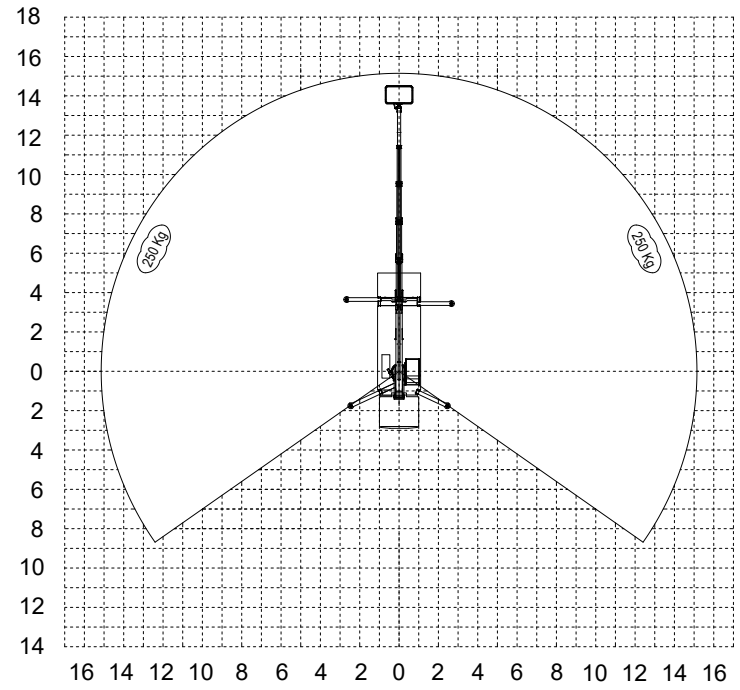


*UZANMA MESAFELERİNDE SEHİM DİKKATE ALINMAMIŞTIR.
*BOOM DEFLECTIONS ARE NOT CALCULATED.

Haber vermeksizin değiştirilebilir.
Subject to change without prior notice

HK 30 TP5

Çalışma Diyagramları
Working Diagrams



*UZANMA MESAFELERİNDE SEHİM DİKKATE ALINMAMIŞTIR.
*BOOM DEFLECTIONS ARE NOT CALCULATED.

Haber vermeksizin değiştirilebilir.
Subject to change without prior notice

Türkiye'nin
Vinç Markası

birlikte
büyüyoruz
we are growing together



hidrokon.com

HK 33 TPF

TELESKOPIK PLATFORMLAR
TELESCOPIC PLATFORMS



HK 33 TPF

Teknik Özellikler

TEMELE ÖZELLİKLER	
MAKSİMUM ÇALIŞMA YÜKSEKLİĞİ	33 MT
MAKSİMUM PLATFORM YÜKSEKLİĞİ	31 MT
MAKSİMUM YATAY UZANIM	24,5 MT
SEPET ÖZELLİKLERİ	
SEPET ÖLÇÜLERİ	850X1100X2000
MAKSİMUM YÜK	250 KG
SEPET DÖNÜŞ	± 90 °
SEPETTE MOTOR START-STOP	STANDART
220 V ELEKTRİK PRİZİ	STANDART
SEPETTE AŞIRI YÜK KONTROLÜ	STANDART
AYDINLATMA LAMBASI	STANDART
BOM GRUBU	
UZATMA BOM SAYISI	5
EKLEM BOM UZATMA SAYISI	—
ANABOM AÇISI	85 °
EKLEM BOM AÇISI	—
FLY BOM AÇISI	90 °
BOM UZUNLUK VE AÇI KONTROLÜ	STANDART
ÜST GRUP ELEKTRONİK ÇALIŞMA KONTROL SİSTEMİ	STANDART
BOM İÇERİSİNDE KABLO VE HORTUM TAŞIMA SİSTEMİ	STANDART
DÖNÜŞ SİSTEMİ	
DÖNÜŞ AÇISI	± 270 °
KULE DÖNÜŞ KONTROLÜ	STANDART
AYNA GENİŞLİĞİNDEN ÇIKMADAN DÖNME	STANDART
DENGE AYAKLARI	
ÖNDE VE ARKADA 2 UZATMALI AYAKLAR	STANDART
AYAK UZATMA UZUNLUK KONTROLÜ	STANDART
AYAK BASMA KONTROLÜ	STANDART
MAKSİMUM EĞİM AÇISI	3 °
MAKİNA DENGE KONTROLÜ	STANDART
BOM İÇERİSİNDE KABLO VE HORTUM TAŞIMA SİSTEMİ	STANDART
TAŞIYICI ARAÇ	
ARACIN YÜKLÜ AĞIRLIĞI	15 T**
SEYİR HALİNDEKİ UZUNLUK	9810 MM **
SEYİR HALİNDEKİ YÜKSEKLİK	3650 MM **
SEYİR HALİNDEKİ GENİŞLİK	2500 MM **
RAMPA UZAKLAŞMA AÇISI	7 °**
HİDROLİK VE ELEKTRONİK SİSTEM	
KABİN	STANDART
TAM ORANSAL HİDROLİK KUMANDA	STANDART
ACİL DURUM EL POMPAŞI	STANDART
HAREKET BAŞLANGIÇ VE BİTİŞLERİNDE RAMPALAMA	STANDART
GEOMETRİK KONTROL SİSTEMİ	STANDART
KABİN İÇİNDE GRAFİK EKREN	STANDART
KABİN İÇİNDE MOTOR START-STOP	STANDART
JOYSTICK KUMANDA (KABLOLU)	STANDART
SEPETTE GRAFİK EKREN	—
OPSİYONEL ÖZELLİKLER	
WEBOSTA	OPSİYONEL
KABİN KALDIRMA	OPSİYONEL
ÇİFT AÇILIR SEPET	OPSİYONEL
ALÜMİNYUM KAPAKLI KAŞA	OPSİYONEL
SEPET ELEKTRİK İZOLASYONU	OPSİYONEL
HABERLEŞME	OPSİYONEL
RÜZGAR SENSÖRÜ	OPSİYONEL
PLASTİK PABUÇ TAKOZU	OPSİYONEL

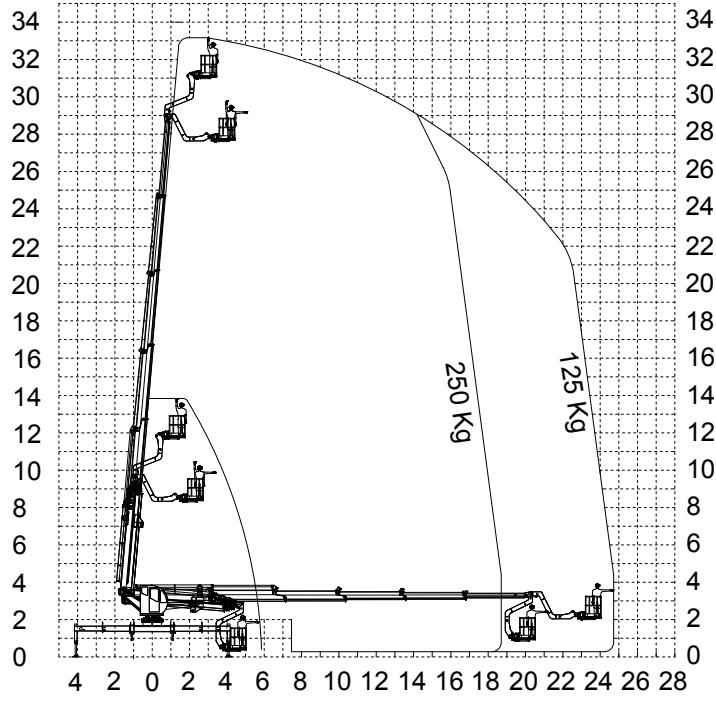
*AÇILIR SEPET (AÇILDIKTAN SONRAKİ ÖLÇÜ)
**ARAÇ TİPİNE BAĞLI DEĞİŞKENLİK GÖSTERİR.

HK 33 TPF

Technical Specifications

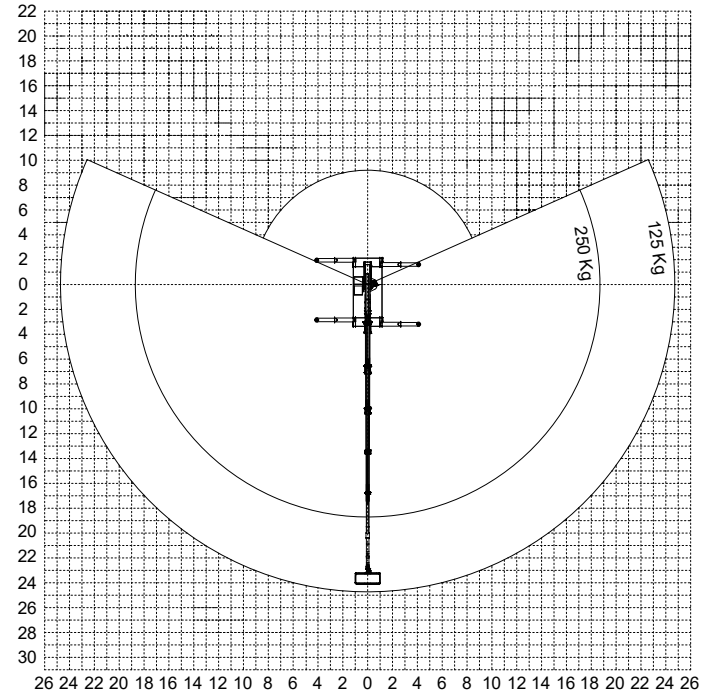
SPECIFICATIONS OF BASIC MODEL	
MAXIMUM WORKING HEIGHT	33 MT
MAXIMUM BASKET FLOOR HEIGHT	31 MT
MAXIMUM HORIZONTAL OUTREACH	24,5 MT
WORKMAN BASKET	
BASKET DIMENSIONS	850X1100X2000
MAXIMUM PERMISSIBLE LOAD	250 KG
SLEWING RANGE OF BASKET	± 90 °
ENGINE START/STOP IN THE BASKET	STANDART
220 V AC OUTLET	STANDART
OVERLOAD CONTROL ON BASKET	STANDART
LIGHTENING	STANDART
BOOM GROUP	
NUMBER OF BOOM EXTENTION	5
UPPER BOOM OF EXTENTION	—
MAINBOOM ANGLE	85 °
UPPER BOOM ANGLE	—
FLY BOOM ANGLE	90 °
LENGHT AND ANGLE CONTROL OF BOOM	STANDART
GEOMETRIC LIMIT CONTROL	STANDART
CABLE AND HOSE CARRYING SYSTEM INSIDE OFF BOOM	STANDART
SLEWING GROUP	
SLEWING RANGE	± 270 °
SLEWING ANGLE CONTROL	STANDART
SLEWING WITHIN MIRROR WIDTH	STANDART
OUTTRIGGERS	
TWO OUTTRIGGERS ON EACH SIDE	STANDART
OUTRIGGER EXTENTION CONTROL	STANDART
VERTICAL JACKING CONTROL	STANDART
MAXIMUM PERMISSIBLE INCLINATION	3 °
AUTOMATIC BALANCE LEVELLING CONTROL SYSTEM	STANDART
CABLE AND HOSE CARRYING SYSTEM INSIDE OFF BOOM	STANDART
CARRIER VEHICLE	
TOTAL WEIGHT WITH PLATFORM	15 T**
LENGHT IN TRANSPORTATION	9810 MM **
HEIGHT IN TRANSPORTATION	3650 MM **
WIDTH IN TRANSPORTATION	2500 MM **
ANGLE OF SLOPE	7 °**
HYDRAULIC AND ELECTRICAL SYSTEM	
CABIN ON TURNTABLE	STANDART
FULLY PROPORTIONAL HYDRAULIC DISTRUBUTOR	STANDART
EMERGENCY HAND PUMP	STANDART
RAMPING ON MOVEMENT START AND STOP	STANDART
GEOMETRIC CONTROL SYSTEM	STANDART
GRAPHIC DISPLAY ON CABIN	STANDART
ENGINE START/STOP IN CABIN	STANDART
JOYSTICK CONTROL (WITH CABLE)	STANDART
GRAPHIC DISPLAY IN THE BASKET	—
OPTIONAL SPECIFICATIONS	
CAB HEATING	OPTIONAL
CAB LIFTING	OPTIONAL
TWO SECTION EXTENDABLE BASKET	OPTIONAL
BODY BY ALUMINIUM COVER	OPTIONAL
ISOLATED BASKET	OPTIONAL
COMMUNICATION DEVICE	OPTIONAL
WIND SENSOR	OPTIONAL
STABILIZER PADS	OPTIONAL

*COMBO BASKET (OPENET AFTER SIZES)
**TRUCK SHOWS DUE TO TYPE OF INSTABILITY.



*UZANMA MESAFELERİNDE SEHİM DİKKATE ALINMAMIŞTIR.
*BOOM DEFLECTIONS ARE NOT CALCULATED.

Haber vermeksizin değiştirilebilir.
Subject to change without prior notice



*UZANMA MESAFELERİNDE SEHİM DİKKATE ALINMAMIŞTIR.
*BOOM DEFLECTIONS ARE NOT CALCULATED.

Haber vermeksizin değiştirilebilir.
Subject to change without prior notice

Türkiye'nin
Vinç Markası

kazanca
ortak olun
be a partner to the gain



hidrokon.com

HK 36 TPF

TELESKOPIK PLATFORMLAR
TELESCOPIC PLATFORMS

HK 36 TPF



HK 36 TPF

Teknik Özellikler

TEMELE ÖZELLİKLER	
MAKSİMUM ÇALIŞMA YÜKSEKLİĞİ	36 MT
MAKSİMUM PLATFORM YÜKSEKLİĞİ	34 MT
MAKSİMUM YATAY UZANIM	25.5 MT
SEPET ÖZELLİKLERİ	
SEPET ÖLÇÜLERİ	850X1100X2000
MAKSİMUM YÜK	300 KG
SEPET DÖNÜŞ	± 90 °
SEPETTE MOTOR START-STOP	STANDART
220 V ELEKTRİK PRİZİ	STANDART
SEPETTE AŞIRI YÜK KONTROLÜ	STANDART
AYDINLATMA LAMBASI	STANDART
BOM GRUBU	
UZATMA BOM SAYISI	5
EKLEM BOM UZATMA SAYISI	—
ANABOM AÇISI	85 °
EKLEM BOM AÇISI	—
FLY BOM AÇISI	90 °
BOM UZUNLUK VE AÇI KONTROLÜ	STANDART
ÜST GRUP ELEKTRONİK ÇALIŞMA KONTROL SİSTEMİ	STANDART
BOM İÇERİSİNDE KABLO VE HORTUM TAŞIMA SİSTEMİ	STANDART
DÖNÜŞ SİSTEMİ	
DÖNÜŞ AÇISI	± 270 °
KULE DÖNÜŞ KONTROLÜ	STANDART
AYNA GENİŞLİĞİNDEN ÇIKMADAN DÖNME	STANDART
DENGE AYAKLARI	
ÖNDE VE ARKADA 2 UZATMALI AYAKLAR	STANDART
AYAK UZATMA UZUNLUK KONTROLÜ	STANDART
AYAK BASMA KONTROLÜ	STANDART
MAKSİMUM EĞİM AÇISI	3 °
MAKİNA DENGE KONTROLÜ	STANDART
BOM İÇERİSİNDE KABLO VE HORTUM TAŞIMA SİSTEMİ	STANDART
TAŞIYICI ARAÇ	
ARACIN YÜKLÜ AĞIRLIĞI	15 T**
SEYİR HALİNDEKİ UZUNLUK	9950 MM **
SEYİR HALİNDEKİ YÜKSEKLİK	3700 MM **
SEYİR HALİNDEKİ GENİŞLİK	2510 MM **
RAMPA UZAKLAŞMA AÇISI	7 °**
HİDROLİK VE ELEKTRONİK SİSTEM	
KABİN	STANDART
TAM ORANSAL HİDROLİK KUMANDA	STANDART
ACİL DURUM EL POMPAŞI	STANDART
HAREKET BAŞLANGIÇ VE BİTİŞLERİNDE RAMPALAMA	STANDART
GEOMETRİK KONTROL SİSTEMİ	STANDART
KABİN İÇİNDE GRAFİK EKREN	STANDART
KABİN İÇİNDE MOTOR START-STOP	STANDART
JOYSTICK KUMANDA (KABLOLU)	STANDART
SEPETTE GRAFİK EKREN	—
OPSİYONEL ÖZELLİKLER	
WEBOSTA	OPSİYONEL
KABİN KALDIRMA	OPSİYONEL
ÇİFT AÇILIR SEPET	OPSİYONEL
ALÜMİNYUM KAPAKLI KAŞA	OPSİYONEL
SEPET ELEKTRİK İZOLASYONU	OPSİYONEL
HABERLEŞME	OPSİYONEL
RÜZGAR SENSÖRÜ	OPSİYONEL
PLASTİK PABUÇ TAKOZU	OPSİYONEL

*AÇILIR SEPET (AÇILDIKTAN SONRAKİ ÖLÇÜ)
**ARAÇ TİPİNE BAĞLI DEĞİŞKENLİK GÖSTERİR.

HK 36 TPF

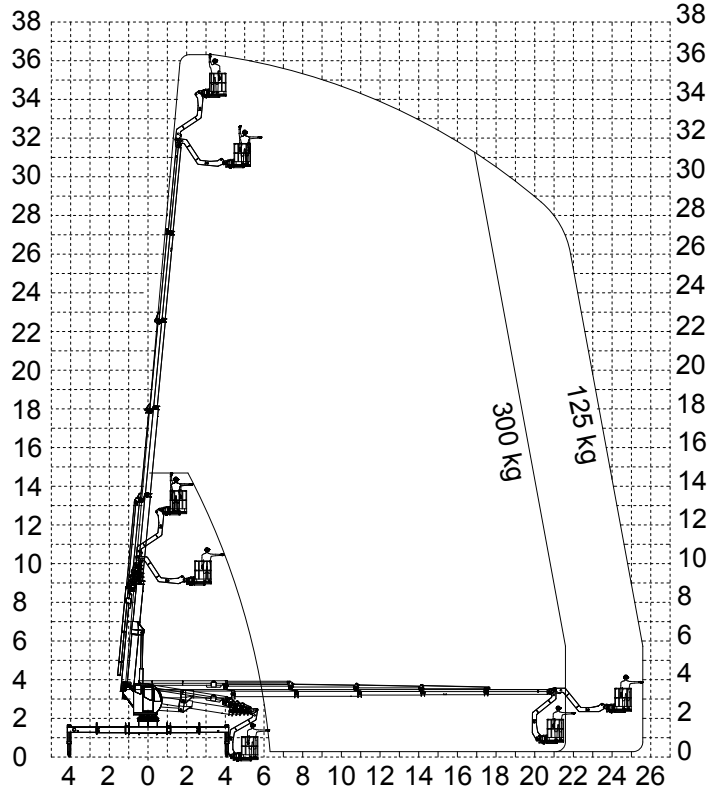
Technical Specifications

SPECIFICATIONS OF BASIC MODEL	
MAXIMUM WORKING HEIGHT	36 MT
MAXIMUM BASKET FLOOR HEIGHT	34 MT
MAXIMUM HORIZONTAL OUTREACH	25.5 MT
WORKMAN BASKET	
BASKET DIMENSIONS	850X1100X2000
MAXIMUM PERMISSIBLE LOAD	300 KG
SLEWING RANGE OF BASKET	± 90 °
ENGINE START/STOP IN THE BASKET	STANDART
220 V AC OUTLET	STANDART
OVERLOAD CONTROL ON BASKET	STANDART
LIGHTENING	STANDART
BOOM GROUP	
NUMBER OF BOOM EXTENTION	5
UPPER BOOM OF EXTENTION	—
MAINBOOM ANGLE	85 °
UPPER BOOM ANGLE	—
FLY BOOM ANGLE	90 °
LENGHT AND ANGLE CONTROL OF BOOM	STANDART
GEOMETRIC LIMIT CONTROL	STANDART
CABLE AND HOSE CARRYING SYSTEM INSIDE OFF BOOM	STANDART
SLEWING GROUP	
SLEWING RANGE	± 270 °
SLEWING ANGLE CONTROL	STANDART
SLEWING WITHIN MIRROR WIDTH	STANDART
OUTTRIGGERS	
TWO OUTTRIGGERS ON EACH SIDE	STANDART
OUTRIGGER EXTENTION CONTROL	STANDART
VERTICAL JACKING CONTROL	STANDART
MAXIMUM PERMISSIBLE INCLINATION	3 °
AUTOMATIC BALANCE LEVELLING CONTROL SYSTEM	STANDART
CABLE AND HOSE CARRYING SYSTEM INSIDE OFF BOOM	STANDART
CARRIER VEHICLE	
TOTAL WEIGHT WITH PLATFORM	15 T**
LENGHT IN TRANSPORTATION	9950 MM **
HEIGHT IN TRANSPORTATION	3700 MM **
WIDTH IN TRANSPORTATION	2510 MM **
ANGLE OF SLOPE	7 °**
HYDRAULIC AND ELECTRICAL SYSTEM	
CABIN ON TURNTABLE	STANDART
FULLY PROPORTIONAL HYDRAULIC DISTRUBUTOR	STANDART
EMERGENCY HAND PUMP	STANDART
RAMPING ON MOVEMENT START AND STOP	STANDART
GEOMETRIC CONTROL SYSTEM	STANDART
GRAPHIC DISPLAY ON CABIN	STANDART
ENGINE START/STOP IN CABIN	STANDART
JOYSTICK CONTROL (WITH CABLE)	STANDART
GRAPHIC DISPLAY IN THE BASKET	—
OPTIONAL SPECIFICATIONS	
CAB HEATING	OPTIONAL
CAB LIFTING	OPTIONAL
TWO SECTION EXTENDABLE BASKET	OPTIONAL
BODY BY ALUMINIUM COVER	OPTIONAL
ISOLATED BASKET	OPTIONAL
COMMUNICATION DEVICE	OPTIONAL
WIND SENSOR	OPTIONAL
STABILIZER PADS	OPTIONAL

*COMBO BASKET (OPENET AFTER SIZES)
**TRUCK SHOWS DUE TO TYPE OF INSTABILITY.

HK 36 TPF

Çalışma Diyagramları
Working Diagrams

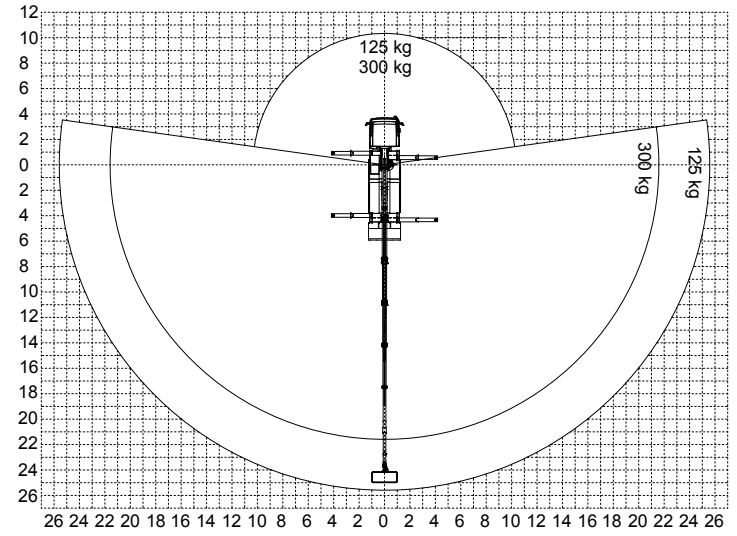


*UZANMA MESAFELERİNDE SEHİM DİKKATE ALINMAMIŞTIR.
*BOOM DEFLECTIONS ARE NOT CALCULATED.

Haber vermeksizin değiştirilebilir.
Subject to change without prior notice

HK 36 TPF

Çalışma Diyagramları
Working Diagrams



*UZANMA MESAFELERİNDE SEHİM DİKKATE ALINMAMIŞTIR.
*BOOM DEFLECTIONS ARE NOT CALCULATED.

Haber vermeksizin değiştirilebilir.
Subject to change without prior notice

Türkiye'nin
Vinç Markası

kârlılığınızı
yükseltiyoruz
we are raising your profitability



hidrokon.com

HK 42 TPF

TELESKOPIK PLATFORMLAR
TELESCOPIC PLATFORMS



HK 42 TPF

Teknik Özellikler

TEMELE ÖZELLİKLER	
MAKSİMUM ÇALIŞMA YÜKSEKLİĞİ	42 MT
MAKSİMUM PLATFORM YÜKSEKLİĞİ	40 MT
MAKSİMUM YATAY UZANIM	28,5 MT
SEPET ÖZELLİKLERİ	
SEPET ÖLÇÜLERİ	850X1100X2200
MAKSİMUM YÜK	500 KG
SEPET DÖNÜŞ	± 90 °
SEPETTE MOTOR START-STOP	STANDART
220 V ELEKTRİK PRİZİ	STANDART
SEPETTE AŞIRI YÜK KONTROLÜ	STANDART
AYDINLATMA LAMBASI	STANDART
BOM GRUBU	
UZATMA BOM SAYISI	5
EKLEM BOM UZATMA SAYISI	—
ANABOM AÇISI	85 °
EKLEM BOM AÇISI	—
FLY BOM AÇISI	110 °
BOM UZUNLUK VE AÇI KONTROLÜ	STANDART
ÜST GRUP ELEKTRONİK ÇALIŞMA KONTROL SİSTEMİ	STANDART
BOM İÇERİSİNDE KABLO VE HORTUM TAŞIMA SİSTEMİ	STANDART
DÖNÜŞ SİSTEMİ	
DÖNÜŞ AÇISI	± 270 °
KULE DÖNÜŞ KONTROLÜ	STANDART
AYNA GENİŞLİĞİNDEN ÇIKMADAN DÖNME	STANDART
DENGE AYAKLARI	
ÖNDE VE ARKADA 2 UZATMALI AYAKLAR	STANDART
AYAK UZATMA UZUNLUK KONTROLÜ	STANDART
AYAK BASMA KONTROLÜ	STANDART
MAKSİMUM EĞİM AÇISI	3 °
MAKİNA DENGE KONTROLÜ	STANDART
BOM İÇERİSİNDE KABLO VE HORTUM TAŞIMA SİSTEMİ	STANDART
TAŞIYICI ARAÇ	
ARACIN YÜKLÜ AĞIRLIĞI	25 T**
SEYİR HALİNDEKİ UZUNLUK	11490 MM **
SEYİR HALİNDEKİ YÜKSEKLİK	3800 MM **
SEYİR HALİNDEKİ GENİŞLİK	2520 MM **
RAMPA UZAKLAŞMA AÇISI	7 °**
HİDROLİK VE ELEKTRONİK SİSTEM	
KABİN	STANDART
TAM ORANSAL HİDROLİK KUMANDA	STANDART
ACİL DURUM EL POMPAŞI	STANDART
HAREKET BAŞLANGIÇ VE BİTİŞLERİNDE RAMPALAMA	STANDART
GEOMETRİK KONTROL SİSTEMİ	STANDART
KABİN İÇİNDE GRAFİK EKREN	STANDART
KABİN İÇİNDE MOTOR START-STOP	STANDART
JOYSTICK KUMANDA (KABLOLU)	STANDART
SEPETTE GRAFİK EKREN	—
OPSİYONEL ÖZELLİKLER	
WEBOSTA	OPSİYONEL
KABİN KALDIRMA	OPSİYONEL
ÇİFT AÇILIR SEPET	OPSİYONEL
ALÜMİNYUM KAPAKLI KASA	OPSİYONEL
SEPET ELEKTRİK İZOLASYONU	OPSİYONEL
HABERLEŞME	STANDART
RÜZGAR SENSÖRÜ	STANDART
PLASTİK PABUÇ TAKOZU	STANDART

*AÇILIR SEPET (AÇILDIKTAN SONRAKİ ÖLÇÜ)
**ARAÇ TİPİNE BAĞLI DEĞİŞKENLİK GÖSTERİR.

HK 42 TPF

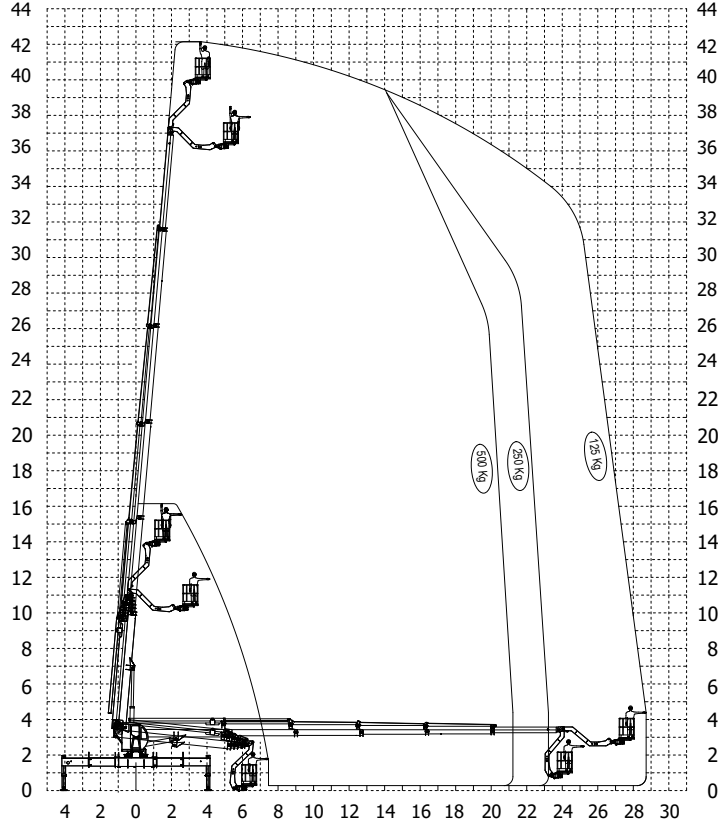
Technical Specifications

SPECIFICATIONS OF BASIC MODEL	
MAXIMUM WORKING HEIGHT	42 MT
MAXIMUM BASKET FLOOR HEIGHT	40 MT
MAXIMUM HORIZONTAL OUTREACH	28,5 MT
WORKMAN BASKET	
BASKET DIMENSIONS	850X1100X2200
MAXIMUM PERMISSIBLE LOAD	500 KG
SLEWING RANGE OF BASKET	± 90 °
ENGINE START/STOP IN THE BASKET	STANDART
220 V AC OUTLET	STANDART
OVERLOAD CONTROL ON BASKET	STANDART
LIGHTENING	STANDART
BOOM GROUP	
NUMBER OF BOOM EXTENTION	5
UPPER BOOM OF EXTENTION	—
MAINBOOM ANGLE	85 °
UPPER BOOM ANGLE	—
FLY BOOM ANGLE	110 °
LENGHT AND ANGLE CONTROL OF BOOM	STANDART
GEOMETRIC LIMIT CONTROL	STANDART
CABLE AND HOSE CARRYING SYSTEM INSIDE OFF BOOM	STANDART
SLEWING GROUP	
SLEWING RANGE	± 270 °
SLEWING ANGLE CONTROL	STANDART
SLEWING WITHIN MIRROR WIDTH	STANDART
OUTTRIGGERS	
TWO OUTTRIGGERS ON EACH SIDE	STANDART
OUTRIGGER EXTENTION CONTROL	STANDART
VERTICAL JACKING CONTROL	STANDART
MAXIMUM PERMISSIBLE INCLINATION	3 °
AUTOMATIC BALANCE LEVELLING CONTROL SYSTEM	STANDART
CABLE AND HOSE CARRYING SYSTEM INSIDE OFF BOOM	STANDART
CARRIER VEHICLE	
TOTAL WEIGHT WITH PLATFORM	25 T**
LENGHT IN TRANSPORTATION	11490 MM **
HEIGHT IN TRANSPORTATION	3800 MM **
WIDTH IN TRANSPORTATION	2520 MM **
ANGLE OF SLOPE	7 °**
HYDRAULIC AND ELECTRICAL SYSTEM	
CABIN ON TURNTABLE	STANDART
FULLY PROPORTIONAL HYDRAULIC DISTRUBUTOR	STANDART
EMERGENCY HAND PUMP	STANDART
RAMPING ON MOVEMENT START AND STOP	STANDART
GEOMETRIC CONTROL SYSTEM	STANDART
GRAPHIC DISPLAY ON CABIN	STANDART
ENGINE START/STOP IN CABIN	STANDART
JOYSTICK CONTROL (WITH CABLE)	STANDART
GRAPHIC DISPLAY IN THE BASKET	—
OPTIONAL SPECIFICATIONS	
CAB HEATING	OPTIONAL
CAB LIFTING	OPTIONAL
TWO SECTION EXTENDABLE BASKET	OPTIONAL
BODY BY ALUMINIUM COVER	OPTIONAL
ISOLATED BASKET	OPTIONAL
COMMUNICATION DEVICE	STANDART
WIND SENSOR	STANDART
STABILIZER PADS	STANDART

*COMBO BASKET (OPENET AFTER SIZES)
**TRUCK SHOWS DUE TO TYPE OF INSTABILITY.

HK 42 TPF

Çalışma Diyagramları
Working Diagrams

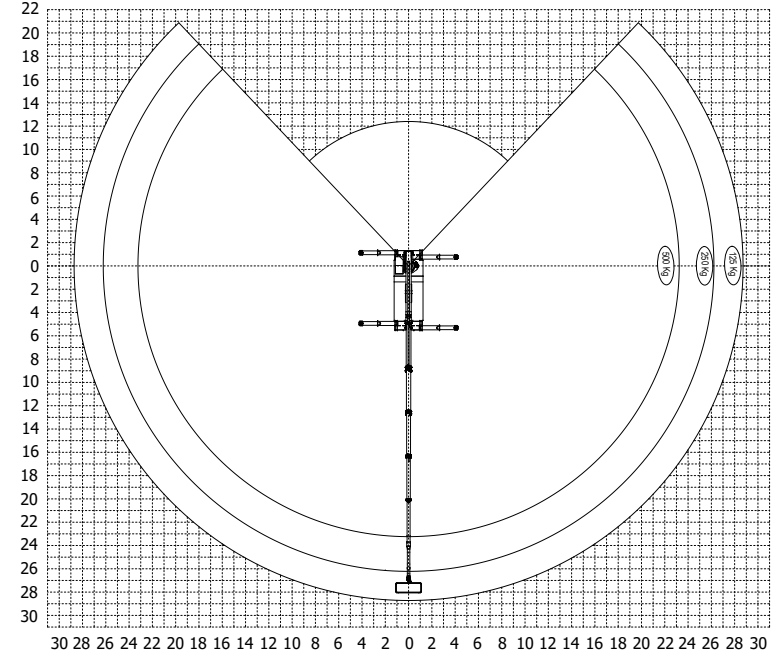


*UZANMA MESAFELERİNDE SEHİM DİKKATE ALINMAMIŞTIR.
*BOOM DEFLECTIONS ARE NOT CALCULATED.

Haber vermeksizin değiştirilebilir.
Subject to change without prior notice

HK 42 TPF

Çalışma Diyagramları
Working Diagrams



*UZANMA MESAFELERİNDE SEHİM DİKKATE ALINMAMIŞTIR.
*BOOM DEFLECTIONS ARE NOT CALCULATED.

Haber vermeksizin değiştirilebilir.
Subject to change without prior notice

Türkiye'nin
Vinç Markası

teknolojiyi dünyaya
ihraç ediyoruz
we export technology to the world



hidrokon.com

HK 45 TPK

TELESKOPIK PLATFORMLAR
TELESCOPIC PLATFORMS



HK 45 TPK

Teknik Özellikler

TEMELE ÖZELLİKLER	
MAKSİMUM ÇALIŞMA YÜKSEKLİĞİ	45 MT
MAKSİMUM PLATFORM YÜKSEKLİĞİ	43 MT
MAKSİMUM YATAY UZANIM	24 MT
SEPET ÖZELLİKLERİ	
SEPET ÖLÇÜLERİ	1020X1100X3600*
MAKSİMUM YÜK	500 KG
SEPET DÖNÜŞ	± 90 °
SEPETTE MOTOR START-STOP	STANDART
220 V ELEKTRİK PRİZİ	STANDART
SEPETTE AŞIRI YÜK KONTROLÜ	STANDART
AYDINLATMA LAMBASI	STANDART
BOM GRUBU	
UZATMA BOM SAYISI	3
EKLEM BOM UZATMA SAYISI	1
ANABOM AÇISI	85 °
EKLEM BOM AÇISI	180 °
FLY BOM AÇISI	90 °
BOM UZUNLUK VE AÇI KONTROLÜ	STANDART
ÜST GRUP ELEKTRONİK ÇALIŞMA KONTROL SİSTEMİ	STANDART
BOM İÇERİSİNDE KABLO VE HORTUM TAŞIMA SİSTEMİ	STANDART
DÖNÜŞ SİSTEMİ	
DÖNÜŞ AÇISI	± 270 °
KULE DÖNÜŞ KONTROLÜ	STANDART
AYNA GENİŞLİĞİNDE ÇIKMADAN DÖNME	STANDART
DENGE AYAKLARI	
ÖNDE VE ARKADA 2 UZATMALI AYAKLAR	STANDART
AYAK UZATMA UZUNLUK KONTROLÜ	STANDART
AYAK BASMA KONTROLÜ	STANDART
MAKSİMUM EĞİM AÇISI	3 °
MAKİNA DENGE KONTROLÜ	STANDART
BOM İÇERİSİNDE KABLO VE HORTUM TAŞIMA SİSTEMİ	STANDART
TAŞIYICI ARAÇ	
ARACIN YÜKLÜ AĞIRLIĞI	25 T**
SEYİR HALİNDEKİ UZUNLUK	9510 MM **
SEYİR HALİNDEKİ YÜKSEKLİK	3995 MM **
SEYİR HALİNDEKİ GENİŞLİK	2550 MM **
RAMPA UZAKLAŞMA AÇISI	12 ° **
HİDROLİK VE ELEKTRONİK SİSTEM	
KABİN	STANDART
TAM ORANSAL HİDROLİK KUMANDA	STANDART
ACİL DURUM EL POMPAŞI	STANDART
HAREKET BAŞLANGIÇ VE BİTİŞLERİNDE RAMPALAMA	STANDART
GEOMETRİK KONTROL SİSTEMİ	STANDART
KABİN İÇİNDE GRAFİK EKРАН	STANDART
KABİN İÇİNDE MOTOR START-STOP	STANDART
JOYSTICK KUMANDA (SABİT)	STANDART
SEPETTE GRAFİK EKРАН	STANDART
OPSİYONEL ÖZELLİKLER	
WEBOSTA	OPSİYONEL
KABİN KALDIRMA	STANDART
ÇİFT AÇILIR SEPET	-
ALÜMİNYUM KAPAKLI KASA	-
SEPET ELEKTRİK İZOLASYONU	-
HABERLEŞME	STANDART
RÜZGAR SENSÖRÜ	STANDART
PLASTİK PABUÇ TAKOZU	STANDART

*AÇILIR SEPET (AÇILDIKTAN SONRAKİ ÖLÇÜ)
**ARAÇ TİPİNE BAĞLI DEĞİŞKENLİK GÖSTERİR.

HK 45 TPK

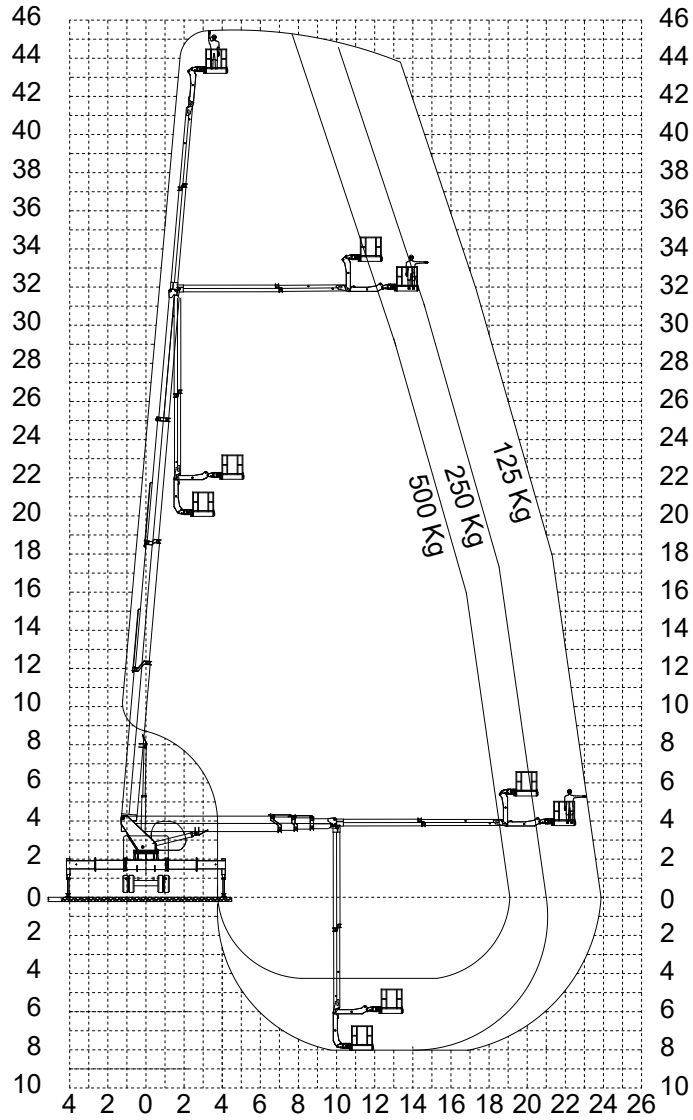
Technical Specifications

SPECIFICATIONS OF BASIC MODEL	
MAXIMUM WORKING HEIGHT	45 MT
MAXIMUM BASKET FLOOR HEIGHT	43 MT
MAXIMUM HORIZONTAL OUTREACH	24 MT
WORKMAN BASKET	
BASKET DIMENSIONS	1020X1100X3600*
MAXIMUM PERMISSIBLE LOAD	500 KG
SLEWING RANGE OF BASKET	± 90 °
ENGINE START/STOP IN THE BASKET	STANDART
220 V AC OUTLET	STANDART
OVERLOAD CONTROL ON BASKET	STANDART
LIGHTENING	STANDART
BOOM GROUP	
NUMBER OF BOOM EXTENTION	3
UPPER BOOM OF EXTENTION	1
MAINBOOM ANGLE	85 °
UPPER BOOM ANGLE	180 °
FLY BOOM ANGLE	90 °
LENGHT AND ANGLE CONTROL OF BOOM	STANDART
GEOMETRIC LIMIT CONTROL	STANDART
CABLE AND HOSE CARRYING SYSTEM INSIDE OFF BOOM	STANDART
SLEWING GROUP	
SLEWING RANGE	± 270 °
SLEWING ANGLE CONTROL	STANDART
SLEWING WITHIN MIRROR WIDTH	STANDART
OUTTRIGGERS	
TWO OUTTRIGGERS ON EACH SIDE	STANDART
OUTRIGGER EXTENTION CONTROL	STANDART
VERTICAL JACKING CONTROL	STANDART
MAXIMUM PERMISSIBLE INCLINATION	3 °
AUTOMATIC BALANCE LEVELLING CONTROL SYSTEM	STANDART
CABLE AND HOSE CARRYING SYSTEM INSIDE OFF BOOM	STANDART
CARRIER VEHICLE	
TOTAL WEIGHT WITH PLATFORM	25 T**
LENGHT IN TRANSPORTATION	9510 MM **
HEIGHT IN TRANSPORTATION	3995 MM **
WIDTH IN TRANSPORTATION	2550 MM **
ANGLE OF SLOPE	12 ° **
HYDRAULIC AND ELECTRICAL SYSTEM	
CABIN ON TURNTABLE	STANDART
FULLY PROPORTIONAL HYDRAULIC DISTRUBUTOR	STANDART
EMERGENCY HAND PUMP	STANDART
RAMPING ON MOVEMENT START AND STOP	STANDART
GEOMETRIC CONTROL SYSTEM	STANDART
GRAPHIC DISPLAY ON CABIN	STANDART
ENGINE START/STOP IN CABIN	STANDART
JOYSTICK CONTROL (FIXED)	STANDART
GRAPHIC DISPLAY IN THE BASKET	STANDART
OPTIONAL SPECIFICATIONS	
CAB HEATING	OPTIONAL
CAB LIFTING	STANDART
TWO SECTION EXTENDABLE BASKET	-
BODY BY ALUMINIUM COVER	-
ISOLATED BASKET	-
COMMUNICATION DEVICE	STANDART
WIND SENSOR	STANDART
STABILIZER PADS	STANDART

*COMBO BASKET (OPENET AFTER SIZES)
**TRUCK SHOWS DUE TO TYPE OF INSTABILITY.

HK 45 TPK

Çalışma Diyagramları
Working Diagrams



*UZANMA MESAFELERİNDE SEHİM DİKKATE ALINMAMIŞTIR.

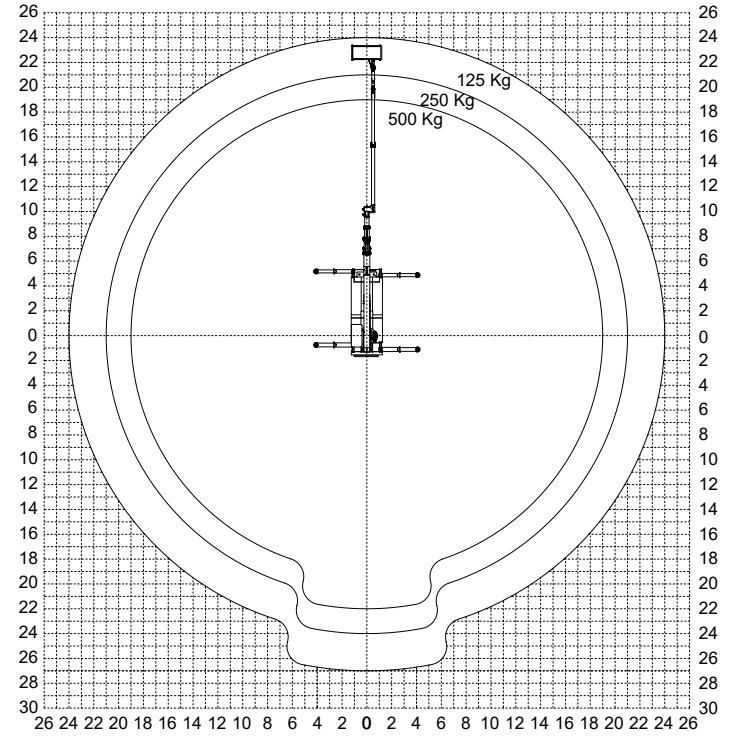
*BOOM DEFLECTIONS ARE NOT CALCULATED.

Haber vermeksizin değiştirilebilir.

Subject to change without prior notice

HK 45 TPK

Çalışma Diyagramları
Working Diagrams



*UZANMA MESAFELERİNDE SEHİM DİKKATE ALINMAMIŞTIR.

*BOOM DEFLECTIONS ARE NOT CALCULATED.

Haber vermeksizin değiştirilebilir.

Subject to change without prior notice

Türkiye'nin
Vinç Markası

çeyrek asırlık
deneyim
quarter century experience



hidrokon.com

BELGELERİMİZ
Certificates

TELESKOPIK PLATFORMLAR
TELESCOPIC PLATFORMS



CERTIFICATE OF CONFORMITY TÜV AUSTRIA
Certificate - No.: 15-PS-0120-TAT-17-MAD-0733

Applicant : HIDROKON KONYA HIDROLİK MAKİNA SAN VE TİC. LTD. ŞTİ.
Büyükkayacak Mah. Evrenköy Cad. 3. O.S.B. No:13
SELÇUKLU KONYA/TURKEY

Product : TRUCK MOUNTED HYDRAULIC ARTICULATED
WORK PLATFORM

Type/Model(s) : # HK 27 TP5 / Foldable type #

Parameters :

Model	HK 27 TP5
Max. Working Height	27 m
Platform Capacity	250 kg

Standard(s) / Certification Basis : 2006/42/EC Machinery Directive
EN ISO 12100:2010
EN 280:2013+A1:2015

This Conformity Assessment is issued on customer request according to Machinery Directive 2006/42/EC article 12.3.a. The listed equipment in Annex IV complies with the harmonised standard and principal protection requirements of the directive. It refers only to the particular sample and its technical documentation submitted for inspection.

Test Report No : 15-PS-0120-IR-003
Issue Date : 18.07.2017
Expiry Date : 18.07.2018

Approved By
MUSTAFA DEMİR
Technical Manager

CE After preparation of the necessary technical documentation as well as the declaration of conformity the required CE marking can be affixed on the product. Other relevant directives have to be observed.

This Certificate of Conformity has been granted to the applicant based on the results of testing performed by the applicant/manufacturer or an accepted laboratory and the consequent review of the test report by TÜV Austria Turk. Revisions to the referenced certification basis or any change of the design, materials, components or processing may require the repetition of all or some of the qualification tests in order for the test report and therefore this associated certificate to remain valid.

TÜV Austria Turk
Kopayolu Halkalı/Sarı Saltın Caddeesi
No : 69 Kadıköy, İstanbul/TURKEY
www.tuv.austriaturk.com/

Tel : +90 216 537 08 13
Fax : +90 216 537 08 13
E-mail : info@t-tuv.com

CERTIFICATE OF CONFORMITY TÜV AUSTRIA
Certificate - No.: 15-PS-0120-TAT-17-MAD-0735

Applicant : HIDROKON KONYA HIDROLİK MAKİNA SAN VE TİC. LTD. ŞTİ.
Büyükkayacak Mah. Evrenköy Cad. 3. O.S.B. No:13
SELÇUKLU KONYA/TURKEY

Product : TRUCK MOUNTED AERIAL HYDRAULIC WORKING PLATFORM

Type/Model(s) : # HK 30 TPF / with fly boom #

Parameters :

Model	HK 30 TPF
Max. Working Height	30 m
Platform Capacity	250 kg

Standard(s) / Certification Basis : 2006/42/EC Machinery Directive
EN ISO 12100:2010
EN 280:2013+A1:2015

This Conformity Assessment is issued on customer request according to Machinery Directive 2006/42/EC article 12.3.a. The listed equipment in Annex IV complies with the harmonised standard and principal protection requirements of the directive. It refers only to the particular sample and its technical documentation submitted for inspection.

Test Report No : 15-PS-0120-IR-001
First Issue Date : 21.07.2015- 15-PS-0120-TAT-15-MAD-0464
Renewal Date : 18.07.2017
Expiry Date : 18.07.2018

Approved By
MUSTAFA DEMİR
Technical Manager

CE After preparation of the necessary technical documentation as well as the declaration of conformity the required CE marking can be affixed on the product. Other relevant directives have to be observed.

This Certificate of Conformity has been granted to the applicant based on the results of testing performed by the applicant/manufacturer or an accepted laboratory and the consequent review of the test report by TÜV Austria Turk. Revisions to the referenced certification basis or any change of the design, materials, components or processing may require the repetition of all or some of the qualification tests in order for the test report and therefore this associated certificate to remain valid.

TÜV Austria Turk
Kopayolu Halkalı/Sarı Saltın Caddeesi
No : 69 Kadıköy, İstanbul/TURKEY
www.tuv.austriaturk.com/

Tel : +90 216 537 08 13
Fax : +90 216 537 08 13
E-mail : info@t-tuv.com

CERTIFICATE OF CONFORMITY TÜV AUSTRIA

Certificate - No.: 15-PS-0120-TAT-17-MAD-0735

Applicant : HIDROKON KONYA HİDROLİK MAKİNA SAN.VE TIC. LTD. ŞTİ.
Büyükkayacık Mah. Evrenköy Cad. 3. O.S.B. No:13
SELÇUKLU KONYA/TURKEY

Product : TRUCK MOUNTED AERIAL HYDRAULIC WORKING PLATFORM

Type/Model(s) : # HK 30 TPF / with fly boom #

Parameters :

Model	HK 30 TPF
Max. Working Height	30 m
Platform Capacity	250 kg

Standard(s) / Certification Basis : 2006/42/EC Machinery Directive
EN ISO 12100:2010
EN 280:2013+A1:2015

This Conformity Assessment is issued on customer request according to Machinery Directive 2006/42/EC article 12.2.a. The listed equipment in Annex IV complies with the harmonized standard and principal protection requirements of the directive. It refers only to the particular sample and its technical documentation submitted for inspection.

Test Report No : 15-PS-0120-IR-001

First Issue Date : 21.07.2015-15-PS-0120-TAT-15-MAD-0464

Renewal Date : 18.07.2017

Expiry Date : 18.07.2018

Approved By
Abdulrahman
Technical Manager

CE After preparation of the necessary technical documentation as well as the declaration of conformity the required CE marking can be affixed on the product. Other relevant directives have to be observed.

This Certificate of Conformity has been granted to the applicant based on the results of testing performed by the applicant/manufacturer or an accepted laboratory and the consequent review of the test report by TÜV Austria Turk. Revisions to the referenced certification basis or any change of the design, materials, components or processing may require the repetition of all or some of the qualification tests in order for the test report and therefore this associated certificate to remain valid.

TÜV Austria Turk
Kategori Mahallesi Hano Saha Cadde
No : 69 Kat:5ay. İstanbul-TURKEY
www.tuv.austriaturk.com/

Tel : +90 216 537 08 13
Fax : +90 216 537 08 13
E-mail : info@t-uv.com

CERTIFICATE TÜV AUSTRIA

The certification body of TÜV AUSTRIA SERVICES GMBH certifies that

Hidrokon Konya Hidrolik Makina San.ve Tic.Ltd.Şti.
of
**Konya Org.San.Bölgesi Büyük Kavacık Mahallesi Evrenköy Cad No :13
Selçuklu / Konya / Türkiye**

has met all necessary quality requirements for welding according to

EN ISO 3834-2

Date of audit: 19.10.2015

This certificate is valid for the following products or service ranges:
Desing, Production, sales and service of hydraulic knuckle boom cranes, telescopic boom cranes, immobile cranes, hydraulic platforms and hydraulic attachments

Date of expiry: 18.10.2018

Certificate no.: PZ/15/S/1455/SCHOE

Certification body of
TÜV AUSTRIA SERVICES GMBH
1015 Vienna, Krugerstraße 15, Austria
Vienna, 20.10.2015
Dipl.-Ing. L. Schöberl
Certification responsible

Failure to meet all these necessary requirements as defined in the annex to this certificate will spoil this document!

TÜV AUSTRIA SERVICES GMBH
Krugersstraße 15
A-1015 Vienna / Österreich
Anzahl der Zertifizierungen nur mit Genehmigung der TÜV AUSTRIA SERVICES GMBH gestattet.

Sertifikat EN 3834-2_Hidrokon.doc
Seite 12

Tel +43(0)1 514 07 0
E-Mail: office@t-uv.at
www.t-uv.at

A series of horizontal dashed lines for writing notes, spanning the width of the page.

hidrokon.com

HİDROKON



HİDROKON KONYA HİDROLİK MAKİNE SANAYİ & TİCARET A.Ş.

Büyük Kayacık Mahallesi 3.Org.San. Bölgesi
Evrenköy Caddesi No:13
Selçuklu/KONYA-TÜRKİYE
T: 444 88 11 T: +90 (332) 444 88 11
T: +90 (332) 239 17 60
F: +90 (332) 239 20 81
info@hidrokon.com
Yurtiçi Satış: satis@hidrokon.com
Yurtdışı Satış: marketing@hidrokon.com
export@hidrokon.com

MERKEZ HİDROLİK KONYA MAKİNE SAN. TİC. LTD. ŞTİ.

Fevzi Çakmak Mah. Hüdaî Cad.
Kostim San. Sit. 10577 Sk.
No: 19 Karatay/KONYA
T: 444 56 53
F: 0332 342 50 22

İSTANBUL MERKEZ MAKİNA SAN. TİC. LTD. ŞTİ.

Marmara Geri Dönüşümcüler San. Sit.
Şekerpınar Mah. Ayçiçek Sk. No:1
Çayırova/KOCAELİ
T: 444 56 53

MARMARA HİDROLİK

Alaaddinbey Mh. Aycan 380 Sk. No: 6/1 Nilüfer/BURSA
T: 444 56 53

YAVUZ HİDROLİK MAKİNA

Üçevler Mh. Ağıska Cd. No: 143/1 Nilüfer/BURSA
T: 444 56 53

ANTHAS İŞMAKİNALARI SAN. TİC. LTD. ŞTİ.

Akdeniz Sanayi Sitesi 5041 Sokak No: 61 KEPEZ/ANTALYA
T: 444 56 53

ÜÇEL HİDROLİK

Yeşilbayır Mh. Hadımköy İstanbul Cd. No: 138/3
Arnavutköy/İSTANBUL
T: 444 56 53

HİDRO DORUK HİDROLİK MAKİNA

İvedik Osb Arı San. Sit. 1475 (692) Sk. No:47
Yeni Mahalle/ANKARA
T: 444 56 53

EMEK MAKİNA

Baharlı Mh. Milas-Bodrum Karayolu Üzeri Cd. Yeni San. Sit.
No: 1/C86 Milas/MUĞLA
T: 444 56 53

REYYAN VİNC

Çanakkale Asfaltı Cemalettin Aksu Cd. Bozköy Girişi
Ana Sk. No:1 Aliağa/İZMİR
T: 444 56 53

HİDROKON teknik özellik, donanım ve tasarımda değişiklik yapma hakkını saklı tutar.
Hidrokon have rights to make changes on technical specifications, equipment and design.

444 88 11

www.hidrokon.com

   /Hidrokon

HKÜK-02 0518/02