



# 5000

## Forage Wagon



*Much more than just a simple wagon!*



FACTORY ITAPIRA, SP



FROM BRAZIL TO ALL CONTINENTS OVER 50 COUNTRIES



FACTORY SÃO JOÃO DA BOA VISTA, SP

**Forage wagons line  
JF, the solution for the farmer!**



# FORAGE WAGONS LINE

**JF 5000** Forage Wagon was developed to support the hard work that the field demands in harvesting and for both discharge in the silo and feed distribution direct in the trough.

Effective in the daily handling of forage, it features back discharge for storage in the silo and side discharge directly to the trough.

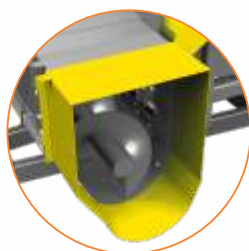
It is equipped with naval wood floor with steel bars driven by chains. It also has safety pins for overload protection of transmission.

Another great advantage of JF 5000 is the optional HydraFeeder with hydraulic control, which adds concentrate ration and other nutritional additives to the forage, with a precise control of dosing flow.

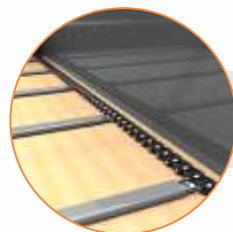


Side discharge

Rear discharge



**REVERSIBLE AND AUTOMATIC DISCHARGE**  
Reversible mechanism for rear and side discharge with fully opening of rear doors



**REINFORCED FLOOR**  
Fully bolted on, it makes easier the maintenance and transport. Featuring removable naval wood floor



**HEIGHT ADJUSTMENT**  
Exclusive system allows adjustment of discharge height according to the trough (730 to 900mm)

TECHNICAL FEATURES	JF 5000
Height	234 to 253mm (with doser)
Discharge height	730 to 900mm
Capacity <sup>1</sup>	5m <sup>3</sup>
Length	5900mm
Width	2000 to 2450mm
Weight (empty)	1550kg (with doser)
Wheels system	Simple
Tires	10,5 x 15 x 8 (2 units)
Required power at PTO	55 cv
Time for rear/side discharge <sup>1</sup>	2,5 minutes
Required revolution at PTO	540 RPM

<sup>1</sup>The productivities are average evaluations obtained during test conditions and may vary according to the product humidity degree, specific weight and working conditions.

## Advantages

- HydraFeeder (Optional) with hydraulic dosing control without leaving the tractor, adding homogeneously nutritional additives to the forage;
- Reversible discharge mechanism allows to change from side discharge to rear discharge fast and easily;
- Special reinforced chain, built in special steel with higher durability and perfect coupling between chains and sprocket wheel;
- Removable floor built in naval wood assuring higher floor durability with simpler maintenance, lower cost and less friction with chains, extending the life span of conveyor bars;
- Height adjustment with the exclusive JF 5000 system allows setting discharge height according to the height of trough (730 to 900mm).



JF 5000 with HydraFeed (optional)

**HYDRAFEED DISPENSER**  
Dispenser with mixing and transporting auger



**Technical description:** Forage wagon for transporting and livestock feeding, with capacity of 5m<sup>3</sup>, powered by tractor PTO, featuring steel conveyor bars driven by chains built in special steel and removable floor built in naval wood, rolling fingers, full opening rear door, detachable draw bar, articulated jack, HydraFeeder with hydraulic control directly from tractor cabin (optional), PTO shaft transmission, reversible discharge system, discharge height adjustment, side discharge auger, auger for wilted forage (optional), safety system with safety pins for transmission protection, wheels and agricultural tires 10,5 x 15 x 8, required revolution at PTO of 540 RPM and required power at PTO starting from 55 hp.



The technical data and images are only for guidance purposes. In an effort to provide products that meet customer needs, the JF reserves the right to update them at any time without preview notice.