

[www.kabat.pl](http://www.kabat.pl)

**KABAT** 



# CONTACT

Kabat Tyre sp. z o.o. sp.j. Bolechowo Plant

Bolechowo, ul. Poznańska 1  
62-005 Owińska, Poland

Sales department  
tel: +48 618 126 017  
trade@kabat.pl

[www.kabat.pl](http://www.kabat.pl)



## WELCOME TO KABAT TYRE PLANT AT BOLECHOWO

Kabat Tyre Plant situated at Bolechowo, near Poznań produces retreaded tyres. Bolechowo is a location where the vehicle tyre retreading business has been conducted continuously for last 70 years.

The Plant employs 60 workers with great experience, necessary to maintain high quality products and service. Continuously upgraded machines and wide range of manufactured products provide a competitive offer.

The network of dealers cooperating with Kabat Tyre Plant distributes our retreaded tyres throughout the country.



## PRODUCTION OF RETREADED TIRES

Tyre retreading process using modern machinery and equipment guarantees high quality product. High quality means long runs and consequently lower operating costs and higher profits.

### 1. Initial inspection

Quality control of the casing is the most important step in the tyre retreading process. It is the quality of the casing which determines whether the tyre meets the expectations of the customer.

### 2. Thorough inspection

The KABAT TYRE PLANT uses state-of-the-art equipment to assess the quality of casings.

We use machines designed by the renowned German company Steinbichler. They allow non-invasive check of invisible internal damage to the casing. Thus, each tyre can be evaluated accurately whether its casing is suitable for retreading.

The device of Italian company Maffeuzei allows non-invasive checking of nail holes from the previous exploitation. It also captures invisible damages. Proper diagnosis of a puncture ensures accurate repair and further processing.



### 3. Roughening

Completing the tyre qualification for retreading is followed by the deprivation of its old tread. In the KABAT TYRE PLANT it is performed by the use of a machine produced by the well-known Danish company SIO. Thanks to an automated process, each tyre acquires the same dimensions after buffing.

In cold retreading only the tread is roughened.

In hot retreading sidewalls can be roughened as well. It is called "from bead to bead" technique by which a renovation of the whole tyre, together with its sidewalls, is possible.

### 4. Grinding and repair

The subsequent technological step of the retreading process is casing repair. Most of the available casings require additional repairs involving the elimination of mechanical damage, previously detected nail holes and filling of rubber defects.



### 5. Preparing rubber belts and rebuilding tyre

The technology of retreaded tyres determines the procedure in the next stage of the production of retreaded tyre called ready-made tyres.

In cold retreading, pre-cure tread is applied on the prepared casing. To achieve a better bond of the casing and the tread, it is necessary to put an additional layer of thin rubber between them.

In hot retreading, a new layer of rubber compound is applied by a machine called orbitread. Raw rubber compound with fixed characteristics is heated to appropriate temperature, made flexible and then put on the rotating tyre in a form of thin stripes. In "from bead to bead" technique an additional procedure of applying a thin layer of rubber compound on the sidewalls of the tyre is necessary.



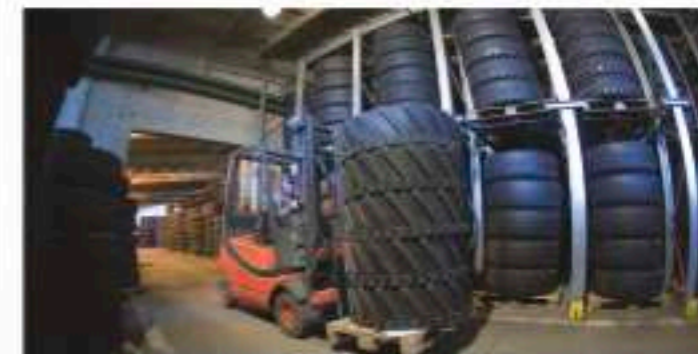
### 6. Applying a new tread and curing

Curing is the final stage in the process of tyre retreading.

In cold retreading, autoclave is used to vulcanize a tyre. Previously prepared tyre with precure tread is encased into a rubber envelope and cured in autoclave. This process takes about 4 hours at 110°C. Thus the new tread is bonded with a tyre permanently.

In hot retreading, special retreading moulds are used, where a tread profile is shaped and new rubber compound is bonded with a tyre. The whole process takes place in a vulcanizing press at 150°C within 1.5 hour.

Both methods provide a high-quality product.



### 7. Final inspection

After completing retreading process, each tyre is controlled under pressure on a specially designed device and examined visually by an expert of the final inspection. Now new, trouble-free exploitation begins.

## E1 D16

retreading type:  
Cold retreading

tread depth:  
13,7 - 14,9 mm

- available sizes:
- 9,5 R 17,5
  - 10 R 17,5
  - 225/75 R 17,5
  - 235/75 R 17,5
  - 245/70 R 17,5
  - 245/70 R 19,5
  - 265/70 R 17,5
  - 265/70 R 19,5
  - 285/70 R 19,5
  - 10 R 22,5
  - 11 R 22,5



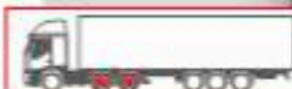
application:  
Drive tire

## D11

retreading type:  
Cold retreading

tread depth:  
18,7 - 19,8 mm

- available sizes:
- 305/70 R 19,5
  - 275/70 R 22,5
  - 295/60 R 22,5
  - 295/80 R 22,5
  - 315/60 R 22,5
  - 315/70 R 22,5
  - 315/80 R 22,5



application:  
Drive tire

## E6

retreading type:  
Cold retreading

tread depth:  
18,8 mm

- available sizes:
- 295/80 R 22,5
  - 315/60 R 22,5
  - 315/70 R 22,5
  - 315/80 R 22,5



application:  
Drive tire

## D10

retreading type:  
Cold retreading

tread depth:  
15,6 - 19,3 mm

- available sizes:
- 285/70 R 19,5
  - 305/70 R 19,5
  - 12 R 22,5
  - 275/70 R 22,5
  - 295/80 R 22,5
  - 305/70 R 22,5
  - 315/60 R 22,5
  - 315/70 R 22,5
  - 315/80 R 22,5



application:  
Drive tire

## E5 D14

retreading type:  
Cold retreading

tread depth:  
16,5 - 18,5 mm

- available sizes:
- 10,00 R 20
  - 11,00 R 20
  - 10 R 22,5
  - 11 R 22,5
  - 225/75 R 17,5
  - 235/75 R 17,5
  - 245/70 R 17,5
  - 265/70 R 17,5
  - 265/70 R 19,5
  - 285/70 R 19,5
  - 295/80 R 22,5
  - 315/70 R 22,5
  - 315/80 R 22,5



application:  
Drive tire

## E7 D13

retreading type:  
Cold retreading

tread depth:  
19,33 - 20,2 mm

- available sizes:
- 285/70 R 19,5
  - 305/70 R 19,5
  - 275/70 R 22,5
  - 295/60 R 22,5
  - 295/80 R 22,5
  - 315/60 R 22,5
  - 315/70 R 22,5
  - 315/80 R 22,5



application:  
Drive tire

## E8

retreading type  
Cold retreading

tread depth  
19,8 mm

available sizes  
• 295/80 R 22.5  
• 315/70 R 22.5  
• 315/80 R 22.5



application  
Drive tire

## ATK 01

retreading type  
Cold retreading

tread depth  
18,6 - 20,5 mm

available sizes  
• 12 R 22.5  
• 13 R 22.5  
• 275/70 R 22.5  
• 295/60 R 22.5  
• 295/80 R 22.5  
• 305/70 R 22.5  
• 315/60 R 22.5  
• 315/70 R 22.5  
• 315/80 R 22.5



application  
Drive tire

## E23

retreading type  
Cold retreading

tread depth  
19,3 - 21,5 mm

available sizes  
• 12 R 22.5  
• 13 R 22.5  
• 275/70 R 22.5  
• 285/70 R 22.5  
• 295/60 R 22.5  
• 295/80 R 22.5  
• 305/70 R 22.5  
• 315/60 R 22.5  
• 315/70 R 22.5  
• 315/80 R 22.5



application  
Drive tire

## E9 D12

retreading type  
Cold retreading

tread depth  
19,2 - 19,36 mm

available sizes  
• 12 R 22.5  
• 13 R 22.5  
• 275/70 R 22.5  
• 285/70 R 22.5  
• 285/80 R 22.5  
• 295/60 R 22.5  
• 295/80 R 22.5  
• 305/70 R 22.5  
• 315/60 R 22.5  
• 315/70 R 22.5  
• 315/80 R 22.5



application  
Drive tire

## D17

retreading type  
Cold retreading

tread depth  
10,4 - 13 mm

available sizes  
• 215/75 R 17.5  
• 225/75 R 17.5  
• 235/75 R 17.5  
• 245/70 R 17.5  
• 245/70 R 19.5  
• 265/70 R 19.5  
• 285/70 R 19.5  
• 305/70 R 19.5  
• 9.00 R 20  
• 10.00 R 20  
• 11.00 R 20  
• 10 R 22.5  
• 11 R 22.5  
• 12 R 22.5  
• 275/70 R 22.5  
• 295/60 R 22.5  
• 295/80 R 22.5  
• 315/70 R 22.5  
• 315/80 R 22.5



application  
Drive tire

## D15

retreading type  
Cold retreading

tread depth  
16 - 16,4 mm

available sizes  
• 305/70 R 22.5  
• 315/60 R 22.5  
• 315/70 R 22.5  
• 315/80 R 22.5



application  
Drive tire

## E32

retreading type  
**Cold retreading**

tread depth  
**19 mm**

- available sizes
- 295/60 R 22.5
  - 295/80 R 22.5
  - 305/70 R 22.5
  - 315/60 R 22.5
  - 315/70 R 22.5
  - 315/80 R 22.5



application  
**Drive tire**

## E38

retreading type  
**Cold retreading**

tread depth  
**21,1 - 21,5 mm**

- available sizes
- 12 R 22.5
  - 13 R 22.5
  - 275/70 R 22.5
  - 285/70 R 22.5
  - 295/60 R 22.5
  - 295/80 R 22.5
  - 305/70 R 22.5
  - 315/60 R 22.5
  - 315/70 R 22.5
  - 315/80 R 22.5



application  
**Drive tire**

## D18

retreading type  
**Cold retreading**

tread depth  
**15 mm**

- available sizes
- 215/75 R 17.5
  - 225/75 R 17.5
  - 235/75 R 17.5
  - 245/70 R 17.5
  - 245/70 R 19.5
  - 265/70 R 19.5
  - 285/70 R 19.5
  - 305/70 R 19.5
  - 9.00 R 20
  - 10.00 R 20
  - 11.00 R 20
  - 10 R 22.5



application  
**Drive tire**

## ATK 02

retreading type  
**Cold retreading**

tread depth  
**17 - 17,3 mm**

- available sizes
- 305/70 R 19.5
  - 295/60 R 22.5
  - 295/80 R 22.5
  - 315/60 R 22.5
  - 315/70 R 22.5
  - 315/80 R 22.5



application  
**Drive tire**

## DB-651

retreading type  
**Hot retreading**

tread depth  
**8 mm**

- available sizes
- 215/75 R 17.5



application  
**Drive tire**

## DY

retreading type  
**Hot retreading**

tread depth  
**18 mm**

- available sizes
- 315/80 R 22.5



application  
**Drive tire**

## DY-3

retreading type  
**Hot retreading**

tread depth  
**23 mm**

available sizes  
• 13 R 22.5



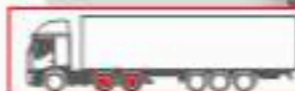
application  
**Drive tire**

## ZU

retreading type  
**Hot retreading**

tread depth  
**18 mm**

available sizes  
• 275/70 R 22.5



application  
**Drive tire**

## M + S 2

retreading type  
**Hot retreading**

tread depth  
**16 - 18 mm**

available sizes  
• 295/80 R 22.5  
• 315/80 R 22.5



application  
**Drive tire**

## DE

retreading type  
**Hot retreading**

tread depth  
**18 mm**

available sizes  
• 295/80 R 22.5



application  
**Drive tire**

## DH 2A

retreading type  
**Hot retreading**

tread depth  
**16 mm**

available sizes  
• 315/70 R 22.5



application  
**Drive tire**

## DH 3Y

retreading type  
**Hot retreading**

tread depth  
**23,5 mm**

available sizes  
• 315/80 R 22.5



application  
**Drive tire**

## DH 2E

retreading type  
**Hot retreading**

tread depth  
**18,5 mm**

available sizes  
• 315/70 R 22.5



application  
**Drive tire**

## E19

retreading type  
**Cold retreading**

tread depth  
**16,5 mm**

available sizes  
• 385/65 R 22.5



application  
**Trailer tire**

## D1

retreading type  
**Cold retreading**

tread depth  
**13 mm**

available sizes  
• 385/65 R 22.5



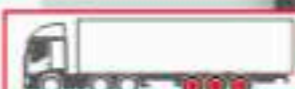
application  
**Trailer tire**

## D2

retreading type  
**Cold retreading**

tread depth  
**13,4 mm**

available sizes  
• 385/65 R 22.5



application  
**Trailer tire**

## D3

retreading type  
**Cold retreading**

tread depth  
**14 mm**

available sizes  
• 385/65 R 22.5



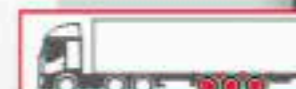
application  
**Trailer tire**

## D4

retreading type  
**Cold retreading**

tread depth  
**14 mm**

available sizes  
• 385/65 R 22.5



application  
**Trailer tire**



## E18

retreading type:  
**Cold retreading**

tread depth:  
**14 mm**

available sizes:  
• 385/65 R 22.5



application:  
**Trailer tire**

## E25

retreading type:  
**Cold retreading**

tread depth:  
**16 mm**

available sizes:  
• 385/65 R 22.5



application:  
**Trailer tire**

## D101

retreading type:  
**Hot retreading**

tread depth:  
**12 mm**

available sizes:  
• 8.25 R 20



application:  
**Trailer tire**

## D-300

retreading type:  
**Hot retreading**

tread depth:  
**16 mm**

available sizes:  
• 12 R 22.5



application:  
**Trailer tire**

## DHT 3E

retreading type:  
**Hot retreading**

tread depth:  
**16,3 mm**

available sizes:  
• 385/65 R 22.5



application:  
**Trailer tire**

## DHT 2A

retreading type:  
**Hot retreading**

tread depth:  
**15 mm**

available sizes:  
• 385/65 R 22.5



application:  
**Trailer tire**

## SG-7

retreading type  
**Hot retreading**

tread depth  
**14 mm**

available sizes  
• 8.25 - 20  
• 9.00 - 20  
• 10.00 - 20  
• 11.00 - 20



application  
**Tires for building machines**

## U3

retreading type  
**Hot retreading**

tread depth  
**26 mm**

available sizes  
• 11.00 - 20



application  
**Tires for building machines**

## TITAN

retreading type  
**Hot retreading**

tread depth  
**12 mm**

available sizes  
• 7.00 - 12  
• 8.25 - 20



application  
**Tires for building machines**

## U47

retreading type  
**Hot retreading**

tread depth  
**24 mm**

available sizes  
• 14.00 - 24



application  
**Tires for building machines**

## TRY-1

retreading type  
**Hot retreading**

tread depth  
**12 mm**

available sizes  
• 385/65 R 22.5



application  
**Agricultural trailers**

## DH ZA 12 Agri

retreading type  
**Hot retreading**

tread depth  
**12 mm**

available sizes  
• 385/65 R 22.5



application  
**Agricultural trailers**