

## Ultra High Pressure Hand Pump



- **Maximum working pressure 2.800 bar.**
- **For use with single-acting cylinders.**
- **Lightweight aluminium pump.**
- **Two speed model.**
- **Hydraulic outlet port: 3/4"-16 UNF female.**
- **Fitted with handle clip for ease of carrying.**
- **2.800 bar accessories available.**

## HYDRAULIC ALUMINIUM HAND PUMP



### LARZEP advantages

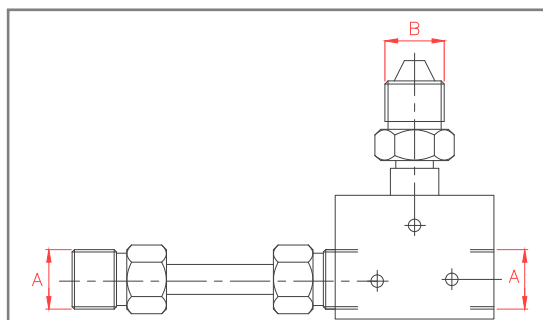
- WA series pumps are for use with single-acting cylinders.
- Lightweight aluminium pump, ideal for easy portability and handling.
- Two speed model to provide rapid cylinder advance until contact is made with the load.
- Hydraulic outlet port: 3/4"-16 UNF female.
- Fitted with handle clip for ease of carrying.
- 2.800 bar accessories available: hoses, couplers, adaptors and gauge.

### 3.000 BAR PRESSURE GAUGE

| Model   | Pressure | Scale | Ext. Ø | Width | Thread         | Model  |
|---------|----------|-------|--------|-------|----------------|--------|
| LARZEP  | bar      | bar   | mm     | mm    | mm             | LARZEP |
| AV43010 | 3.000    | 50    | 100    | 60    | Female M16x1.5 | AZ1513 |

### 3.000 BAR GAUGE ADAPTOR

| Model  | A           | B        |
|--------|-------------|----------|
| LARZEP | 60° Cone    | 60° Cone |
| AZ1530 | 3/4"-16 UNF | M16x1.5  |



## HYDRAULIC HAND PUMPS

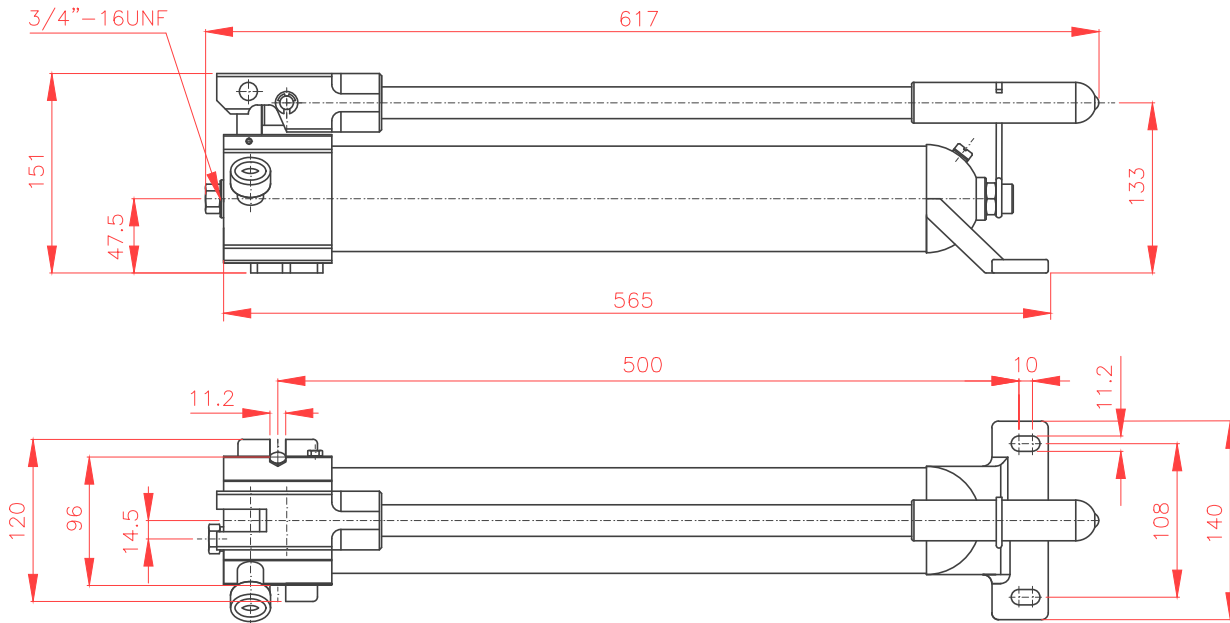


# WA

## 1,0 litre

## 2.800 bar

PUMPS



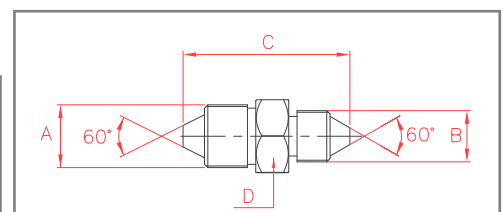
| Model   | Usable oil      | Handel effort | Oil displacement per stroke (cm <sup>3</sup> ) |                       | Pressure rating (bar) |                       | Weight |
|---------|-----------------|---------------|--|-----------------------|-----------------------|-----------------------|--------|
|         |                 |               | 1 <sup>st</sup> Stage                          | 2 <sup>nd</sup> Stage | 1 <sup>st</sup> Stage | 2 <sup>nd</sup> Stage |        |
| LARZEP  | cm <sup>3</sup> | kg            |  |                       |                       |                       | kg     |
| WA21028 | 1.000           | 43            | 12,9   | 0,65                  | 14                    | 2.800                 | 4,5    |

### HOSES MAXIMUM WORKING PRESSURE 3.000 BAR

| Int. Ø | End     | Pressure | Length (m) |        |        |        |        |        |        |        |
|--------|---------|----------|------------|--------|--------|--------|--------|--------|--------|--------|
|        |         |          | 0,8        | 1,5    | 2      | 3      | 4      | 6      | 8      | 10     |
| 3,9    | M16x1.5 | 3.000    | AP6008     | AP6015 | AP6020 | AP6030 | AP6040 | AP6060 | AP6080 | AP6100 |

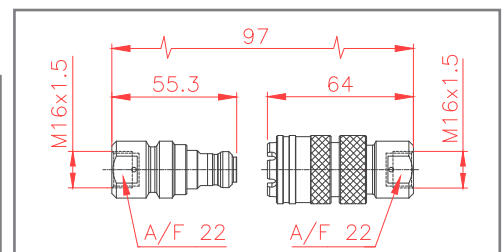
### 3.000 BAR ADAPTOR

| Model  | A            | B        | C  | D  |
|--------|--------------|----------|----|----|
| LARZEP | 60° Cone     | 60° Cone | mm | mm |
| AZ1107 | 3/4" -16 UNF | M16x1.5  | 50 | 22 |



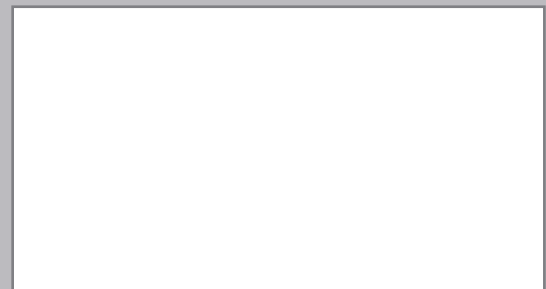
### 3.000 BAR BALL COUPLERS

| Flow  | Coupling | Model  | Thread         | Pressure |
|-------|----------|--------|----------------|----------|
| l/min |          | LARZEP | 60° Cone       | bar      |
| 4,6   | Male     | AZ3330 | Female M16x1.5 | 3.000    |
|       | Female   | AZ3350 | Female M16x1.5 | 3.000    |





Larzep SA - Avda. Urutiaga 6 - 48269 Mallabia (Bizkaia) - Spain  
www.larzep.com - info@larzep.com - T: +34 943 17 12 00



34-011 EN 10-2016 © Larzep - Subject to change without notice.

Performance under Pressure