

# BUILT WITH PASSION

Leading manufacturer in Europe



**PALMS**

# PALMS FIFTH GENERATION INNOVATIONS

Palmse Mehaanikakoda (PALMS) is a family business founded in 1992 by father and son.

Today, PALMS is the largest producer of forestry trailers and cranes in Europe. We have achieved the leading position through persistent work and continuous product development.

**PALMS** is founded on 4 core values:

- **Passion** for building the best equipment in our field.
- **Innovation** that makes forestry easier for our customers.
- Uncompromising product **quality**.
- Value of long-lasting **customer relationships**.

Our latest fifth generation of PALMS forest cranes and widened trailer model range is not plainly playing with words. Those are the products that are among the best, you can buy.

Join the PALMS family and choose a reliable tool appropriate for your needs.

Anti Puusepp  
Palmse Mehaanikakoda  
co-founder



## 3-YEAR PALMS GUARANTEE

3-year warranty for frame, column and booms.



## HIDDEN HYDRAULIC HOSES

As a first for self-loading forestry trailer producers in Northern Europe, we hid hydraulic hoses inside the telescopic crane boom. This design significantly increases durability and reliability. Best examples from our crane lineup are PALMS 5.85; 7.86 and 7.94.



## PROTECTED HOSE ROUTING

We have developed a unique and well-protected solution for hydraulic hoses from the boom to the rotator.\*



## STRENX™ STEEL

PALMS production is complemented by SSAB quality certificate "My Inner Strenx™." All our cranes are produced using Swedish top quality Strenx™-steel.



## NEW GENERATION PAINT COATING

Thanks to KTL and powder coating, the equipment lasts longer and has a significantly higher resale value.



**IMPROVED WORK PLATFORM**

The foldable operator platform and ladder are easy and comfortable to use.



**NEW SLEWING CONNECTIONS**

The new patented shaft system for pivoting connections reduces maintenance cost and increases the cranes durability. \*



**TURNING HOUSE DESIGN**

The turning house design is based on computer simulation strength test. Important crane parts are also tested and designed accordingly. Our cast iron design provides significant advantages compared with the welded design.\*



**SAFETY GRILLES**

PALMS trailers have strong and safe safety grilles which comply with EU directives.



**TESTED DRAWBARS**

The trailers drawbars meet the newest EU standards.



**NEW UNIBODY FRAME TYPE - U**

For better protection, all control systems are hidden inside the frame. The unibody design also provides multiple positions for different type of bolsters.



**LOCKABLE BOLSTERS**

Patented system for quick, easy and secure bolster locking.\*

\*Not available for all models.

## FORESTRY CRANES

# 7.86

**7** – indicates series.  
A lower number indicates a smaller model just like with cars.

**86** – Indicates the maximum reach of the crane (8,6 m).





## FORESTRY CRANES – 2<sup>ND</sup> SERIES / 2.54

**2<sup>ND</sup> SERIES** cranes are smallest in the PALMS cranes selection. Despite the compact size, these cranes are serious workhorses and can be used universally in many ways. The technological solutions are similar as used in our bigger crane series. These cranes are easy to control, and they can be mounted on different platforms.



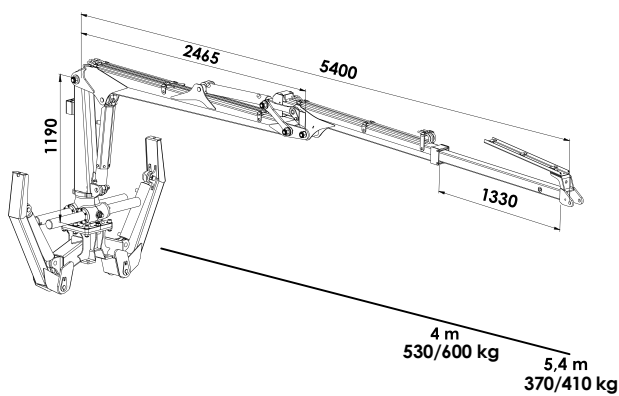
### NEW GENERATION COATING TECHNOLOGY: KTL + POWDER

From 2017 onwards, all PALMS products first receive a EPO primer coating by cataphoresis treatment before being powder coated. Quality surface coatings keep away rust and provide the product a higher resale value. PALMS is the first producer in forestry crane and trailer segment, in the Northern Europe, using KTL + powder coating technology.





2.54



<b>PALMS 2.54</b>	
<b>Maximum reach</b>	5,4 m
<b>Lifting torque, gross</b>	29 kNm
<b>Lifting torque (190 bar)</b>	26 kNm
<b>Telescope boom length</b>	1,33 m
<b>Slewing cylinder quantity</b>	4 pcs
<b>Slewing torque</b>	7,8 kNm
<b>Working pressure</b>	215 bar
<b>Rotator maximum load</b>	30 kN(FL)
<b>FITS TRAILERS</b>	<b>6S</b>

\* Detailed info on additional equipment and combinability possibilities can be found on the last pages of the catalogue. In case of additional questions contact your local PALMS dealer.

## FORESTRY CRANES – 3<sup>RD</sup> SERIES / 3.67

**3<sup>RD</sup> SERIES** cranes are ideally suited for preparing firewood for you and your neighbour, as well as removing hay bales from the fields.



### BROAD PRODUCT SELECTION

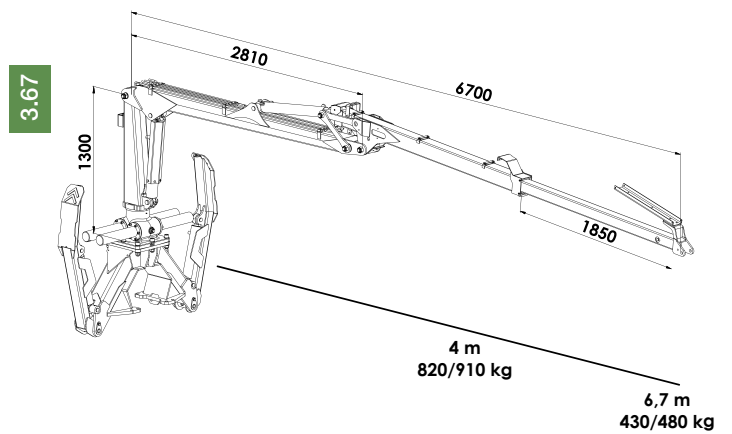
Every customer has unique needs. Combine our products to create equipment for your specific needs. Combination possibilities are explained on the last pages of the catalogue.







PALMS 3.67	
<b>Maximum reach</b>	6,7 m
<b>Lifting torque, gross</b>	45 kNm
<b>Lifting torque (190 bar)</b>	41 kNm
<b>Telescope boom length</b>	1,85 m
<b>Slewing cylinder quantity</b>	4 pcs
<b>Slewing torque</b>	12 kNm
<b>Working pressure</b>	215 bar
<b>Rotator maximum load</b>	30 kN(FL)
FITS TRAILERS	
	8SX; 9S; 10D



\* Detailed info on additional equipment and combinability possibilities can be found on the last pages of the catalogue. In case of additional questions contact your local PALMS dealer.

## FORESTRY CRANES – 4<sup>TH</sup> SERIES / 4.70

**4<sup>TH</sup> SERIES** cranes are powerful but do not require a large tractor. Technologies and components used in their construction are same as those of greater series, yet models in the 4th series remain light and compact.

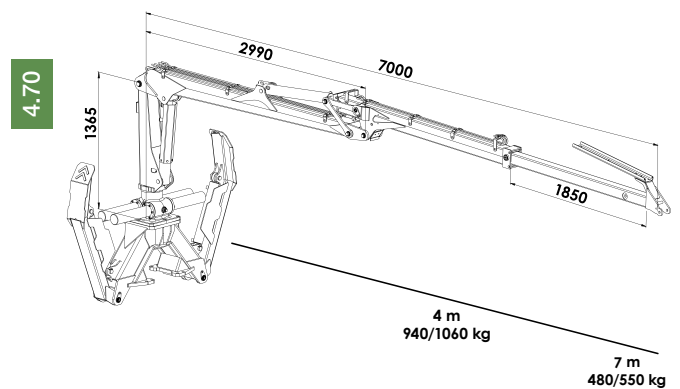


### NEW SLEWING CONNECTIONS (PATENT EP 3 239 540 A1)

The new crane boom shaft system is designed to reduce maintenance costs and increase the crane's durability. The special coating of the boom shafts makes connections more durable and gives them a lower friction coefficient which in turn reduces fuel consumption. The boom shaft's lubrication points are now conveniently located on the side of the boom. The new boom shaft's are fitted on the 4th, 5th and 7th series cranes.



PALMS 4.70	
<b>Maximum reach</b>	7,0 m
<b>Lifting torque, gross</b>	52 kNm
<b>Lifting torque (190 bar)</b>	47 kNm
<b>Telescope boom length</b>	1,85 m
<b>Slewing cylinder quantity</b>	4 pcs
<b>Slewing torque</b>	15 kNm
<b>Working pressure</b>	215 bar
<b>Rotator maximum load</b>	45 kN(FL)
<b>FITS TRAILERS</b>	<b>8SX; 9S; 10D; 13D; 10U; 13U</b>



\* Detailed info on additional equipment and combinability possibilities can be found on the last pages of the catalogue. In case of additional questions contact your local PALMS dealer.

## FORESTRY CRANES – 5<sup>TH</sup> SERIES / 5.72; 5.85

**5<sup>TH</sup> SERIES** cranes are designed for daily forestry work and optimized for use with a medium-sized tractor. The cranes can be used with a wide choice of trailers and may also be placed on chippers, or tractor frames. The professionally designed crane boom geometry and significant lifting capacity help you to move the logs with ease.

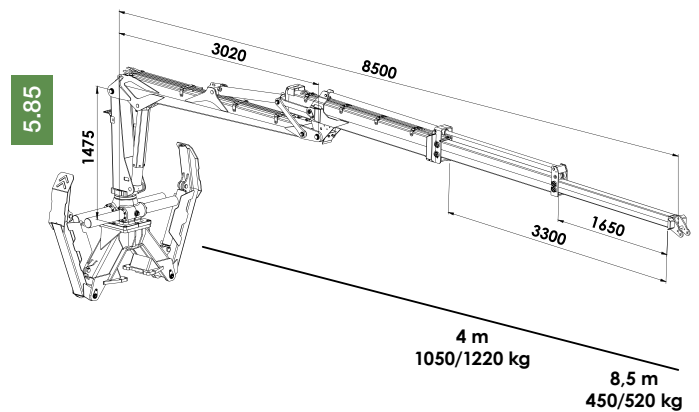
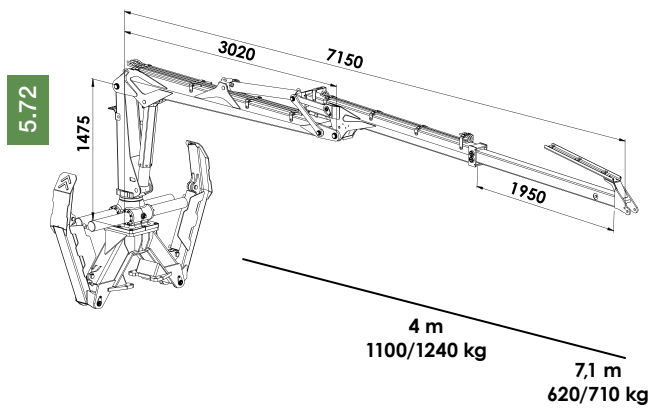


### HIDDEN HYDRAULIC HOSES

The forest cranes most vulnerable component is hydraulics. Damaged hydraulic hoses mean wasted work days. For better protection PALMS designers hid the hydraulic components inside the telescopic boom.

**PPR** - PALMS Protected Hose Routing Solution between boom and rotator has passed hardest tests in the forest.





	<b>PALMS 5.72</b>	<b>PALMS 5.85</b>
<b>Maximum reach</b>	7,15 m	8,5 m
<b>Lifting torque, gross</b>	63 kNm	63 kNm
<b>Lifting torque (190 bars)</b>	56 kNm	56 kNm
<b>Telescope boom length</b>	1,95 m	3,3 m
<b>Slewing cylinder quantity</b>	4 pcs	4 pcs
<b>Slewing torque</b>	17 kNm	17 kNm
<b>Working pressure</b>	215 bar	215 bar
<b>Rotator maximum load</b>	50 kN(FL)	50 kN(FL)
<b>FITS TRAILERS</b>	9S; 10D; 13D; 10U; 13U; MWD 3.2; HMWD 3.2	9S; 10D; 13D; 10U; 13U; MWD 3.2 HMWD 3.2

\* Detailed info on additional equipment and combinability possibilities can be found on the last pages of the catalogue. In case of additional questions contact your local PALMS dealer.

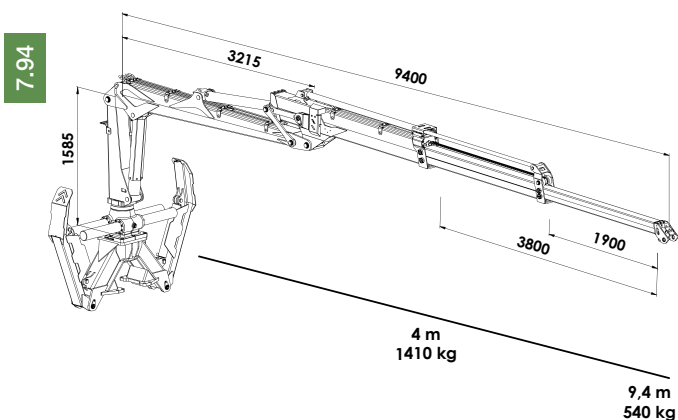
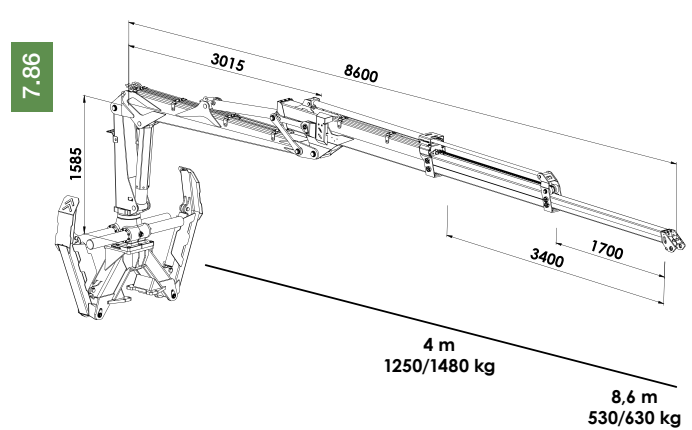
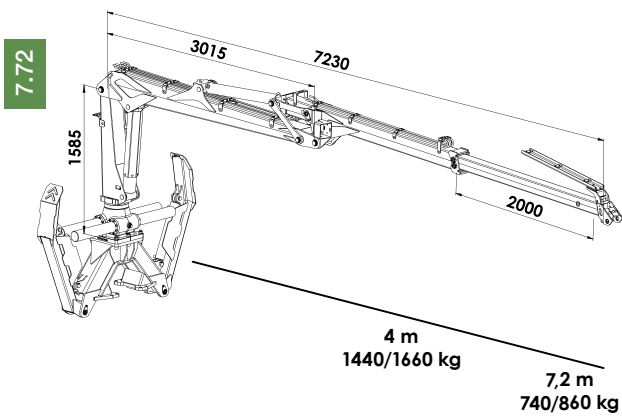
## FORESTRY CRANES – 7<sup>TH</sup> SERIES / 7.72; 7.86; 7.94

**7<sup>TH</sup> SERIES** cranes are for serious everyday forestry work. These top models accumulate all our knowledge of the past decades. In addition to our larger trailers, these cranes can be placed on chippers, or mounted directly on the tractor frame.



	<b>PALMS 7.72</b>	<b>PALMS 7.86</b>	<b>PALMS 7.94</b>
<b>Maximum reach</b>	7,2 m	8,6 m	9,4 m
<b>Lifting torque, gross</b>	83 kNm	83 kNm	83 kNm
<b>Lifting torque (190 bars)</b>	74 kNm	74 kNm	-
<b>Telescope boom length</b>	2,0 m	3,4 m	3,8 m
<b>Slewing cylinder quantity</b>	4 pcs	4 pcs	4 pcs
<b>Slewing torque</b>	21 kNm	21 kNm	21 kNm
<b>Working pressure</b>	215 bar	215 bar	215 bar
<b>Rotator maximum load</b>	60 kN(FL)	60 kN(FL)	60 kN(FL)
<b>FITS TRAILERS</b>	<b>13D; 10U; 13U; MWD 3.2; HMWD 3.2</b>	<b>13D; 10U; 13U; MWD 3.2; HMWD 3.2</b>	<b>13D; 10U; 13U; MWD 3.2; HMWD 3.2</b>

\* Detailed info on additional equipment and combinability possibilities can be found on the last pages of the catalogue. In case of additional questions contact your local PALMS dealer.




**TUNING HOUSE DESIGN**

The slewing mechanism is the heart of the crane. The fifth generation crane models are equipped with an improved cast iron turning house, which is even more durable than the previous model. Improved turning houses are used on 2nd, 5th and 7th series cranes.

# TRAILERS







PALMS trailer model names refer to frame type (indicated by letter) and nominal loading capacity (indicated by number).

**S** – Single beam trailer

**D** – Double beam trailer

**U** – Unibody type trailer

**MWD** – Mechanical 4WD

**HMWD** – Hydro mechanical 4WD

**10D**

is a double beam trailer with a nominal loading capacity of 10 000 kg.

\*The actual loading capacity depends on the additional equipment and installed crane.



**HEAVY DUTY**

Heavy Duty indicates, that the product is one of the most advanced and capable forestry machines of the series.

## FORESTRY TRAILERS – S-SERIES / 6S, 8SX, 9S

**S-SERIES** forestry trailers are light and compact. The gross weight of the trailer depends on the model, between 8.5–12 tons. Single beam trailers are suitable for 2<sup>nd</sup>, 3<sup>rd</sup>, 4<sup>th</sup> and 5<sup>th</sup> series cranes.



### INCREASED LOAD AREA

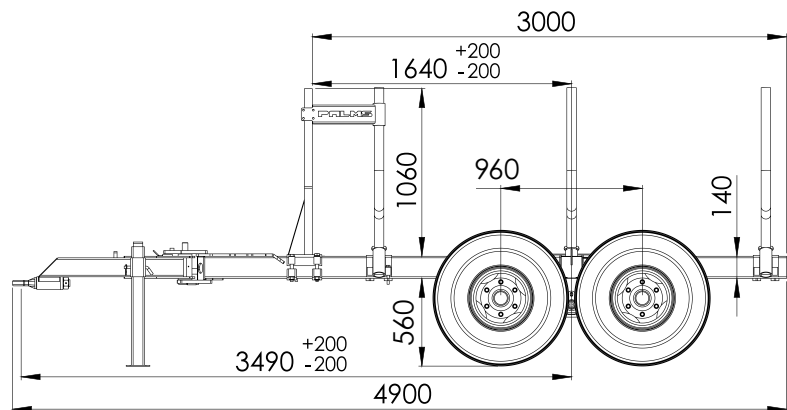
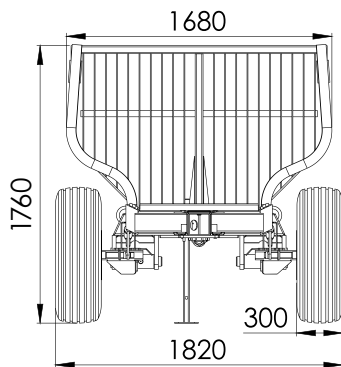
When it comes to forestry trailers, the load area becomes more important than loading capacity. A larger load area means that you can fit more logs onto the trailer.

#### As an extra option we provide:

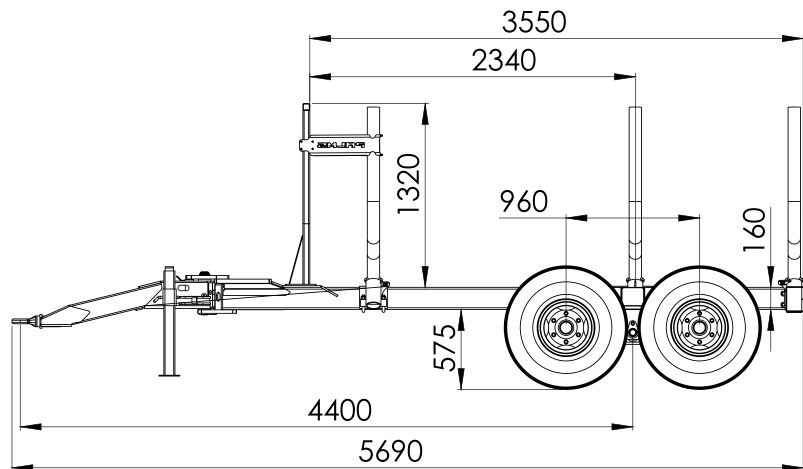
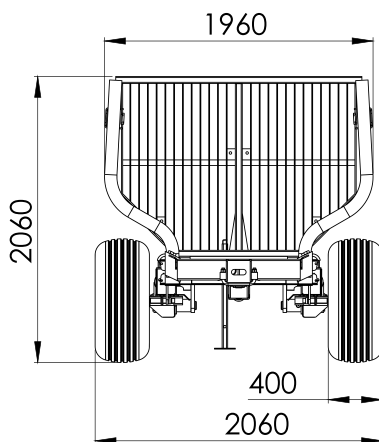
- bolster extensions
- loading area widening system on U-type and MWD 3.2 trailers.



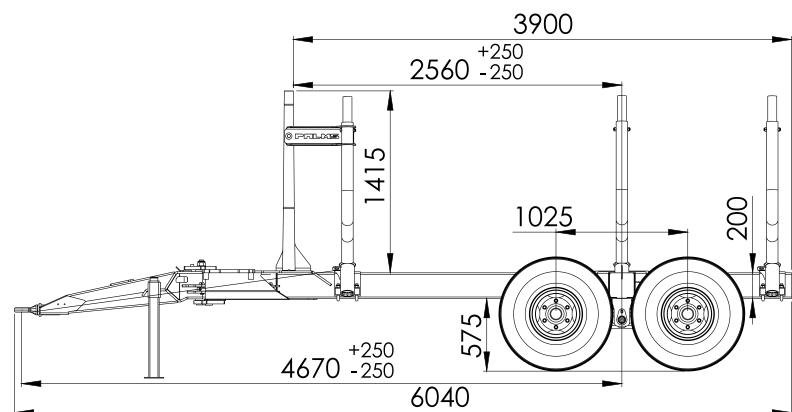
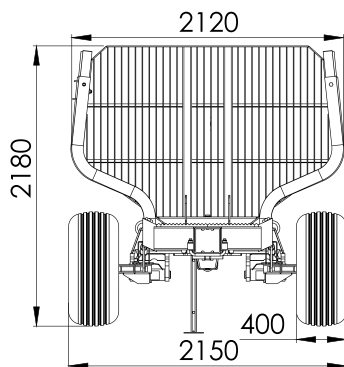
**6S**



**8SX**



**9S**



	<b>PALMS 6S</b>	<b>PALMS 8SX</b>	<b>PALMS 9S</b>
<b>Gross weight</b>	8000 kg	10 000 kg	12 000 kg
<b>Curb weight</b>	815 kg	1140 kg	1375 kg
<b>Chassis</b>	140 x 140 x 6 mm	160 x 160 x 8 mm	200 x 200 x 8 mm
<b>Load area cross-section</b>	1,5 m <sup>2</sup>	2,0 m <sup>2</sup>	2,25 m <sup>2</sup>
<b>Max crane size by lifting torque</b>	32 kNm	47 kNm	65 kNm
<b>Drawbar control cylinders, standard / (optional)</b>	1/(0) pcs	2 pcs	2 pcs
<b>Frame extension length (optional)</b>	-	0,61 m	0,7 m
<b>FITS CRANES</b>	<b>2.54</b>	<b>3.67; 4.70</b>	<b>3.67; 4.70; 5.72; 5.85</b>

\* Detailed info on additional equipment and combinability possibilities can be found on the last pages of the catalogue. In case of additional questions contact your local PALMS dealer. Final dimensions and weights might be different depending on the equipment level.

## FORESTRY TRAILERS – D-SERIES / 10D; 13D

**D-SERIES** trailers have a strong double beam frame design that provides large loading capacity. These trailers can be combined with 3rd, 4th, 5th and 7th series cranes.

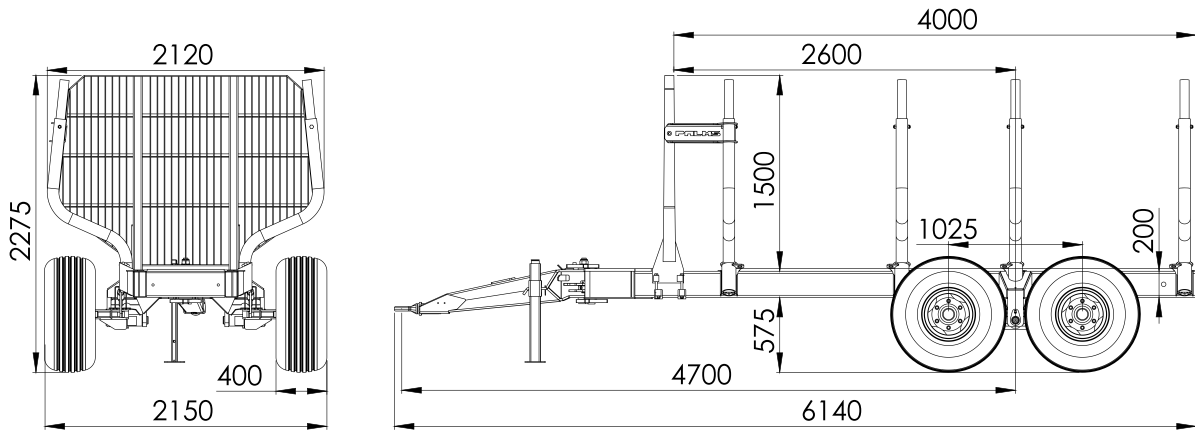


### LOCKABLE BOLSTERS (PATENT EP 3284659)

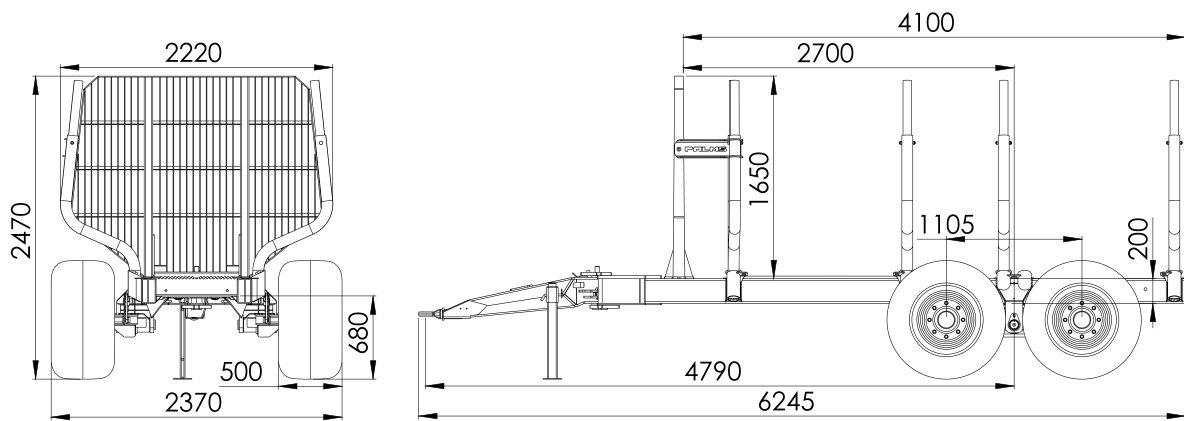
PALMS engineers have created and patented a unique locking system for bolsters. The bolsters are locked quickly and securely into their sockets. No tools are required for attaching the bolsters to the trailer. The innovation is standard equipment for 9S, 10D, 13D, 10U and 13U trailers.



**10D**



**13D**



	<b>PALMS 10D</b>	<b>PALMS 13D</b>
<b>Gross weight</b>	13 000 kg	16 000 kg
<b>Curb weight</b>	1570 kg	2000 kg
<b>Chassis</b>	2 x 200 x 100 x 8 mm	2 x 200 x 120 x 8 mm
<b>Load area crosssection</b>	2,4 m <sup>2</sup>	2,85 m <sup>2</sup>
<b>Max crane size by lifting torque</b>	75 kNm	85 kNm
<b>Drawbar control cylinders</b>	2 pcs	2 pcs
<b>Frame extension length (optional)</b>	0,85 m	0,85 m
<b>FITS CRANES</b>	<b>3.67; 4.70; 5.72; 5.85</b>	<b>4.70; 5.72; 5.85; 7.72; 7.86</b>

\* Detailed info on additional equipment and combinability possibilities can be found on the last pages of the catalogue. In case of additional questions contact your local PALMS dealer. Final dimensions and weights might be different depending on the equipment level.



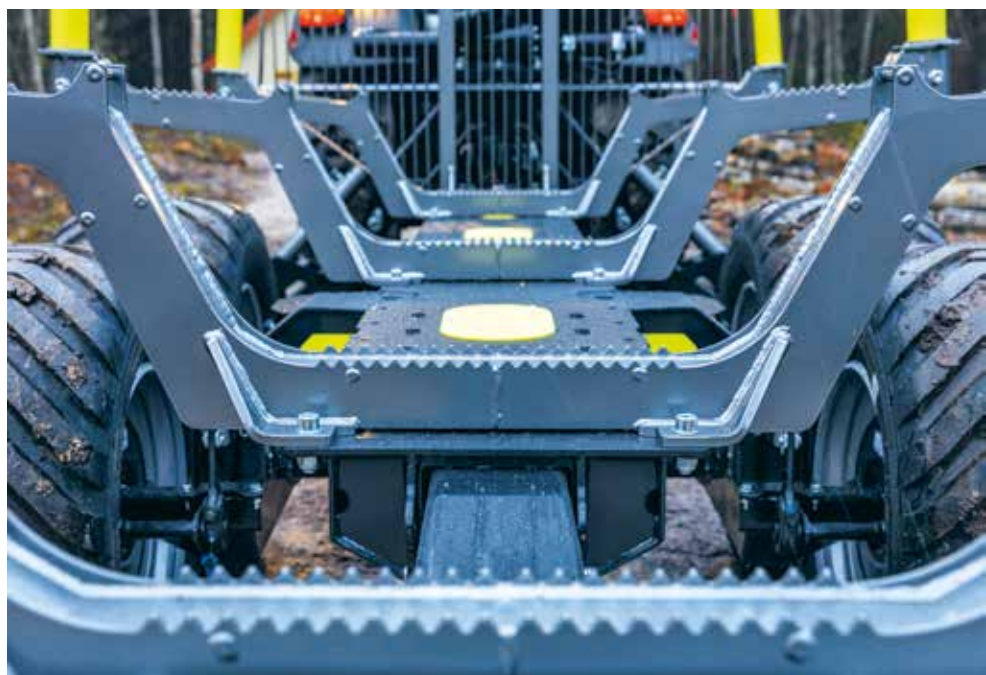
## FORESTRY TRAILERS – U-SERIES / 10U; 13U

**U-SERIES** trailers are designed for heavy logging. Thanks to the strong unibody design, these work horses are durable and capable of bearing really heavy loads. Strenx™ steel allows PALMS to offer a unique combination of trailer key features, like light weight and durability. U-series trailers are available with regular bolsters and forwarder type bolsters.

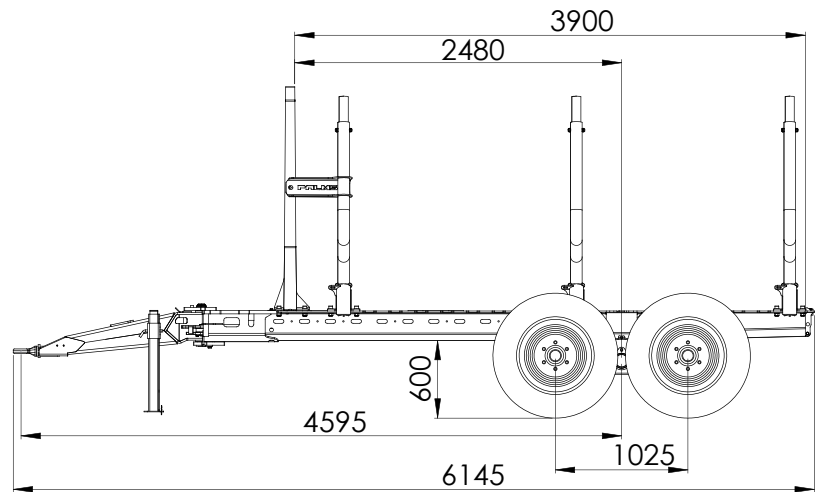
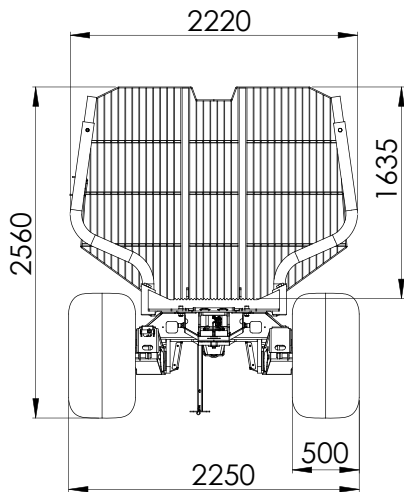


### EXTENDABLE FRAME

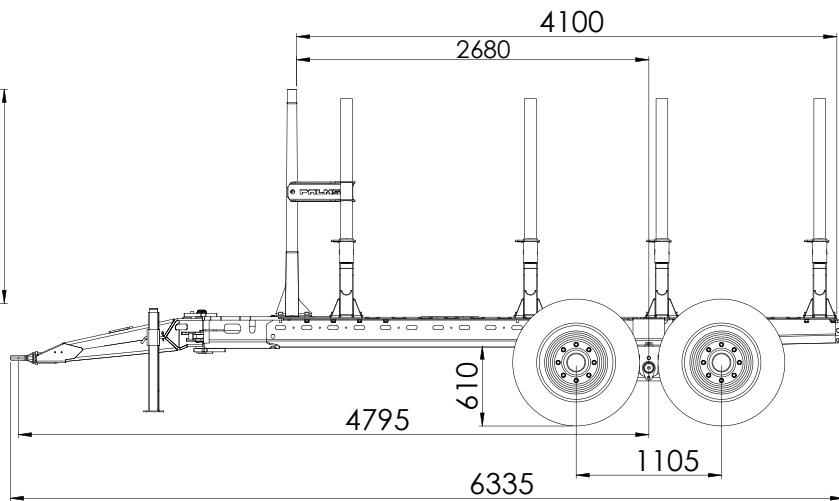
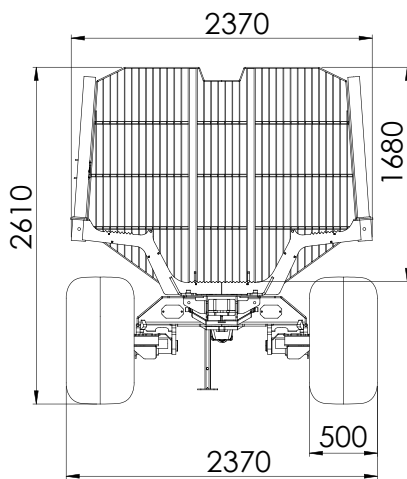
All trailers can be ordered with an option of extendable frame. The frames can be extended up to 1 m of extra length. Extensions are provided with and without bolsters and bunk. To provide maximum customizability, the trailer has multiple bolster locking positions. U and MWD series have a hydraulic extension option.



10U



13U



	PALMS 10U	PALMS 13U
<b>Gross weight</b>	14 000 kg	18 000 kg
<b>Chassis</b>	unibody	unibody
<b>Load area cross-section</b>	2,6 m <sup>2</sup>	3,0 m <sup>2</sup>
<b>Max crane size by lifting torque</b>	85 kNm	85 kNm
<b>Drawbar control cylinders</b>	2 pcs	2 pcs
<b>Frame extension length (optional)</b>	0,99 m	0,99 m
<b>FITS CRANES</b>	4.70; 5.72; 5.85; 7.72; 7.86; 7.94	4.70; 5.72; 5.85; 7.72; 7.86; 7.94



\* Detailed info on additional equipment and combinability possibilities can be found on the last pages of the catalogue. In case of additional questions contact your local PALMS dealer. Final dimensions and weights might be different depending on the equipment level.

## FORESTRY TRAILERS – MWD 3.2 / MWD 3.2; HMWD 3.2

After serious tests in the forest PALMS proudly presents **MWD-SERIES** forestry trailers. Thanks to the mechanical 4-wheel drive, this bad boy gets you through the hardest conditions. This professional trailer has NAF axles and is available with mechanical (MWD), or hydro-mechanical (HMWD) drives.



**HD HEAVY DUTY**



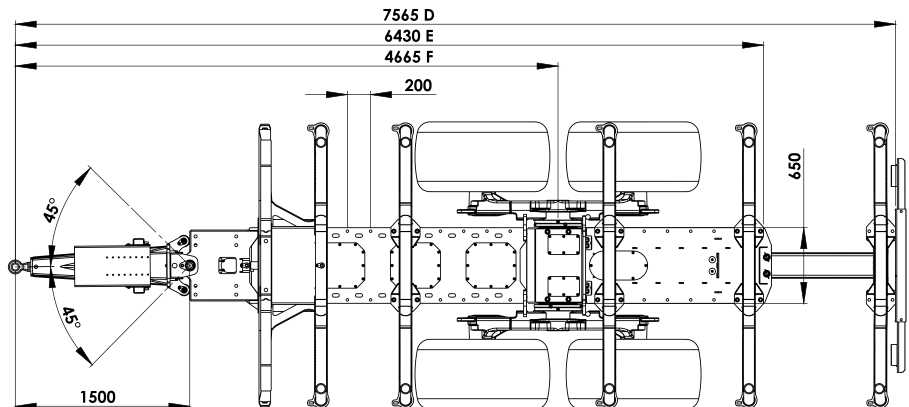
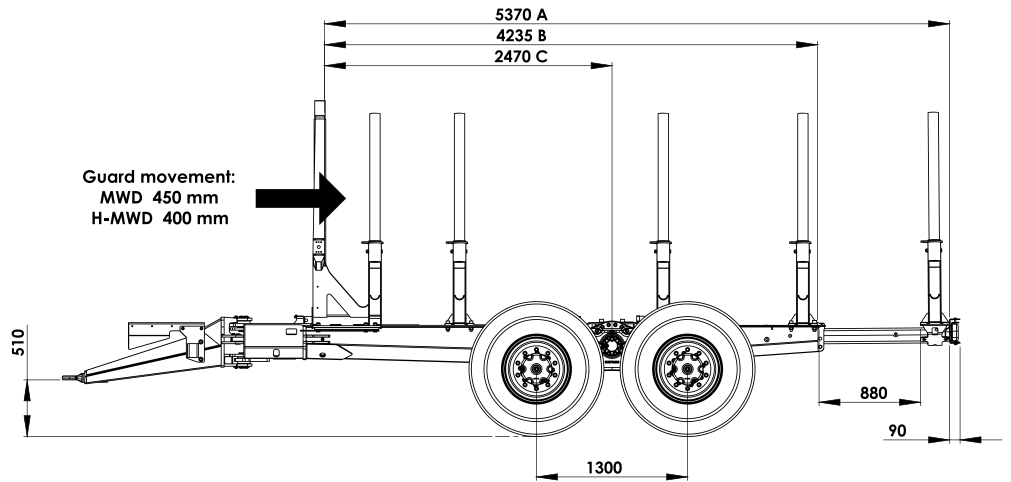
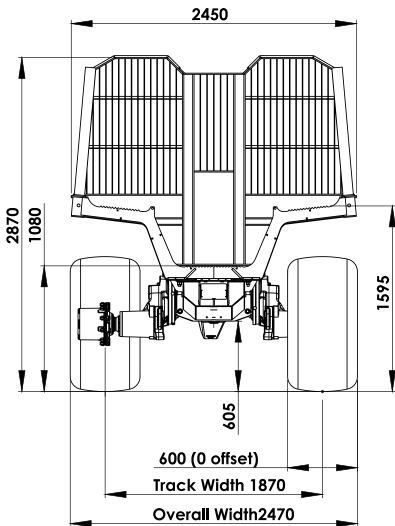
### MWD-SYSTEMS

You can choose between two different 4WD systems:

- **Fully mechanical MWD 3.2** needs a customized transmission box between the tractor's ground speed PTO and trailer axles. Therefore, the MWD 3.2 can only be used with tractor for which this trailer has been designed.
- **Hydro mechanical HMWD 3.2** has a hydro mechanical transmission, between the tractor's PTO and axles. This 4x4 system is universal and fits onto all suitable sized tractors with PTO. LS hydraulic pump allows to operate trailer as well as crane.



**MWD 3.2; HMWD 3.2**



	Standard	Standard HMWD	Long	Long HMWD
<b>A</b>	5370	5320	5780	5730
<b>B</b>	4235	4185	4645	4595
<b>C</b>	2470	2420	2880	2830
<b>D</b>	7565	7565	7975	7975
<b>E</b>	6430	6430	6840	6840
<b>F</b>	4665	4665	5075	5075

	<b>PALMS MWD 3.2</b>	<b>PALMS HMWD 3.2</b>
<b>Gross weight</b>	18 000 kg	18 000 kg
<b>Curb weight</b>	4020 kg	4100 kg
<b>Chassis</b>	unibody	unibody
<b>Load area cross section</b>	3,2 m <sup>2</sup>	3,2 m <sup>2</sup>
<b>Load area wideners</b>	2 x 300 mm will increase LACS by 0,66 m <sup>2</sup> , total 3,86 m <sup>2</sup>	2 x 300 mm will increase LACS by 0,66 m <sup>2</sup> , total 3,86 m <sup>2</sup>
<b>Max crane size by lifting torque</b>	120 kNm	120 kNm
<b>Drawbar control cylinders</b>	2 pcs	2 pcs
<b>Lengths of loading areas</b>	4,23 m / 4,64 m	4,18 m / 4,59 m
<b>Y-drawbar option</b>	yes	yes
<b>Trailer pushing power</b>	max 75 kN	max 60 kN
<b>Tyres</b>	Standard 600/50/22,5 Nokia Forest Optional 710/40/22,5	Standard 600/50/22,5 Nokia Forest Optional 710/40/22,5
<b>Driving speed</b>	max 10km/h with traction max 40km/h without traction	max 5 km/h with traction max 40 km/h without traction
<b>FITS CRANES</b>	<b>4.70; 5.72; 5.85; 7.72; 7.86; 7.94</b>	<b>4.70; 5.72; 5.85; 7.72; 7.86; 7.94</b>

\* Detailed info on additional equipment and combinability possibilities can be found on the last pages of the catalogue. In case of additional questions contact your local PALMS dealer. Final dimensions and weights might be different depending on the equipment level.

# ADDITIONAL EQUIPMENT

CRANES	2.54	3.67	4.70	5.72	5.85	7.72	7.86	7.94
Maximum reach, m	5,4	6,7	7	7,15	8,5	7,2	8,6	9,4
Lifting torque, gross kNm	29	45	50	63	63	83	83	83
Lifting torque (190 bars), kNm	26	41	47	56	56	74	74	-
Lifting capacity at 4 m without grapple and rotator, kg	600	910	1020	1240	1220	1660	1480	1410
Lifting capacity at full reach without grapple and rotator, kg	410	480	530	710	520	860	630	540
Lifting capacity by 190 bars at 4 m without grapple and rotator, kg	530	820	940	1100	1050	1440	1250	-
Lifting capacity by 190 bars at full reach without grapple and rotator, kg	370	430	480	620	450	740	530	-
Telescopic boom stroke length	1,33	1,85	1,85	1,95	3,3	2	3,4	3,8
Slewing cylinder amount	4	4	4	4	4	4	4	4
Slewing torque, kNm	7,8	12	15	17	17	21	21	21
Working pressure, bar	215	215	215	215	215	215	215	215
Rotator maximum load, kN	30	30	45	55	55	60	60	60
Crane weight without support leg & valve block	400	620	710	820	900	1160	1280	1310
Pillar slewing angle, °	370	370	370	380	380	380	380	380
Recommended oil flow, L/min	20-35	30-45	45-70	50-90	50-90	60-120	60-120	60-120
<b>CONTROL VALVES</b>								
A4, 4/8 XY+2x el.on-off valve	+	+	+	+	+	+	+	-
A7, 4/8 XYZ control valve	+	+	+	+	+	+	+	-
A11, 2/8 Pre-hydraulic,+2x el.propo Parker P70	-	+	+	+	+	+	+	+
A12, 2/8 Pre-hydraulic, +2x el.propo	-	+	+	+	+	+	+	+
A15, propo el, ministick, Parker P70, display optional	-	+	+	+	+	+	+	+
A 23, propo el, ministick, Parker L90, display optional	-	-	+	+	+	+	+	+
A26, radio control	-	-	+	+	+	+	+	+
A31, PALMS PLUS, display, Parker mini joysticks and L90	-	-	-	+	+	+	+	+
A37, combi control (Radio+A31) and L90	-	-	-	+	+	+	+	+
A 41, PALMS Tip Control Parker Mini Joysticks L90	-	-	-	-	-	-	+	+
<b>SUPPORT LEGS</b>								
A-type support legs	+	+	+	+	+	-	-	-
FD-type support legs	-	+	+	+	+	+	+	+
<b>GRAPPLES</b>								
Grapple C02	+	+	-	-	-	-	-	-
Grapple C1	+	+	+	+	+	-	-	-
Grapple C3	-	+	+	+	+	+	+	+
Grapple C5	-	-	-	+	+	+	+	+
Energy wood grapple C6	-	+	+	+	+	+	+	+
Energy wood grapple C7	-	-	-	+	+	+	+	+
<b>OTHER EXTRAS</b>								
Radio-controlled winch	+	+	+	+	+	+	+	+
Joystick holders	+	+	+	+	+	+	+	+
LED-work lights	-	+	+	+	+	+	+	+
Operator seat on boom	-	-	+	+	+	+	+	+
Oil cooling kit	-	+	+	+	+	+	+	+
Electronic floating position for lifting and slewing	+	+	+	+	+	+	+	+
Valve block attached to main beam	-	+	+	+	+	+	+	+
Slewing gear hydraulic damping	-	-	+	+	+	+	+	+
Slewing gear and lifting cylinder hydraulic damping	-	-	+	+	+	+	+	+
High-pressure oil filter	+	+	+	+	+	+	+	+
Rotator double brake	+	+	+	+	+	+	+	+

TRAILERS	6S	8SX	9S	10D	13D	10U	13U	MWD 3.2
Gross weight, kg	8000	10000	12000	13000	16000	14000	18000	18000
Curb weight (without options), kg	815	1140	1375	1570	2000	1950	2000	4020
Total length, mm	4900	5690	6040	6140	6240	6145	6335	6700
Width with standard wheels, mm	1820	2060	2150	2150	2370	2250	2370	2510
Standard wheel size	11,5/80-15,3	400/60-15,5	400/60-15,5	400/55-22,5	500/50-17	500/50-17	500/50-17	600x50x22,5
Load area cross-section, m <sup>2</sup>	1,5	2,0	2,25	2,4	2,85	2,6	3,0	3,2
Load area length mm	3000	3550	3900	4000	4100	3900	4100	4230/4640
Chassis, mm	140x140	160x160	200x200	2x200x100	2x200x120	unibody	unibody	unibody
Bolster pairs standard	3	3	3	3	3	3	3	4
2WD-hub motor drive	-	-	+	+	+	+	+	-
4WD-roller drive	-	-	+	+	+	+	+	-
Hydraulic brakes	+	+	+	+	+	+	+	+
Air brakes	+	+	+	+	+	+	+	+
Drawbar control cylinders standard / (optional), pcs	1/(0)	2	2	2	2	2	2	2
Max crane size by lifting torque, kNm	32	47	65	75	85	85	85	120
Frame extension length (optional), m	-	0,61	0,70	0,85	0,85	0,99	0,99	0,9
<b>WHEELS</b>								
Wheels 340/55-16	+	+	-	-	-	-	-	-
Wheels 400/60-15,5 RF-rim	+	+	+	+	-	-	-	-
Wheels 480/45-17 RF-rim	-	+	+	+	-	+	-	-
Wheels 500/50-17 RF-rim	-	-	+	+	+	+	+	-
Wheels 400/55-22,5 RF-rim	-	-	+	+	-	+	-	-
Wheels 500/50-22,5 RF-rim	-	-	-	-	+	-	+	-
Wheels 550/45-22,5 RF-rim	-	-	-	-	+	-	+	-
Wheels 600/50-22,5 RF-rim	-	-	-	-	+	-	+	+
Wheels 710/40-22,5 RF-rim	-	-	-	-	-	-	-	+
<b>HYDRAULICS</b>								
Piston pump on trailer drawbar	-	+	+	+	+	+	+	-
Piston pump with multiplier for PTO	-	+	+	+	+	+	+	+
Piston pump with multiplier on drawbar	-	+	+	+	+	+	+	+
Variable pump on drawbar	-	-	+	+	+	+	+	+
Tank, 100l	-	+	+	+	+	+	+	+
Tank, 100l filled with HVLP oil	-	+	+	+	+	+	+	+
<b>OTHER ADDITIONAL EQUIPMENT</b>								
Tail lights	+	+	+	+	+	+	+	+
Support links for first bolster pair	-	+	+	+	+	+	+	-
Additional bolsters	+	+	+	+	+	+	+	-
Bolster extensions	-	-	+	+	+	+	+	+
Frame extension	-	+	+	+	+	+	+	+
Operator work platform on drawbar	-	+	+	+	+	+	+	-
Base frame for sorting	-	+	+	+	+	+	+	+

		CRANES							
		2.54	3.67	4.70	5.72	5.85	7.72	7.86	7.94
<b>TRAILERS</b>	6S	+	-	-	-	-	-	-	-
	8SX	-	+	+	-	-	-	-	-
	9S	-	+	+	+	+	-	-	-
	10D	-	+	+	+	+	-	-	-
	13D	-	-	+	+	+	+	+	+
	10U	-	-	+	+	+	+	+	+
	13U	-	-	+	+	+	+	+	+
	MWD 3.2	-	-	-	+	+	+	+	+

\*Final dimensions and weights might be different depending on equipment level.

## INTELLIGENT CRANE CONTROL



**PALMS Plus** enables multiple crane movements simultaneously with one control from the joysticks.

With **PALMS Plus**, the traditional forestry crane works as a parallel crane. With the automatic extension activated the lift boom, outer boom and extension can be controlled at the same time with one left-hand joystick movement.

With **PALMS Tip Control**, the operator controls the tip of the boom instead of controlling each cylinder separately. End cushions for the lift boom, outer boom and extension movements increase well-being at work and the lifetime of the crane.

### OPERATOR BENEFITS

- Performance and productivity: the PALMS control system is fast, smooth, and very accurate.
- User-friendly: the logical PALMS user interface is quick to learn and easy to use.
- A tool for real professionals, but thanks to its user-friendliness, it is also the best choice for operators who do not require professional level adjustability.
- Well proven and a reliable product for harsh field conditions.



## CONTROL OPTIONS

The PALMS system can be controlled with the local joysticks, a radio, or with both options. The selection of control method is done on the touch screen.

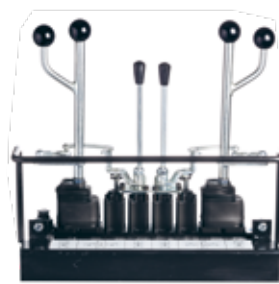


**Scan this QR-code** to watch a feature demonstration of the PALMS graphical user interface. Links to **more PALMS videos** can be found in the description of the video.

**CONTROL VALVES**



**A4, hydraulic 4/8 XY + pre-control 2x el. on-off**



**A7, mechanical 4/8 XYZ**



**A11/A11+/A12/A12+, pre-hydraulic 2/8 with hydraulic + 2x el. propo**



**A19/ A21 propo el, joysticks**



**A18/A26 electric radio control**

**A15, A23**



**Parker joysticks**

**A37**



**Parker joysticks**



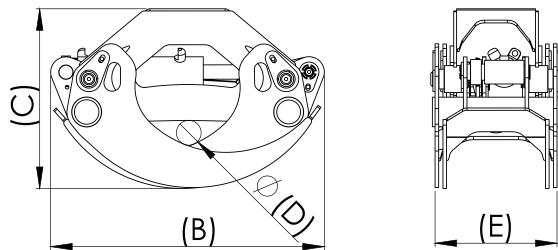
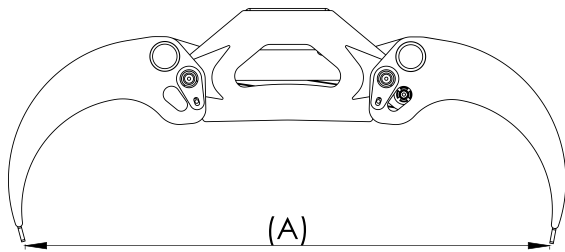
**Radio**

**A31, A41**



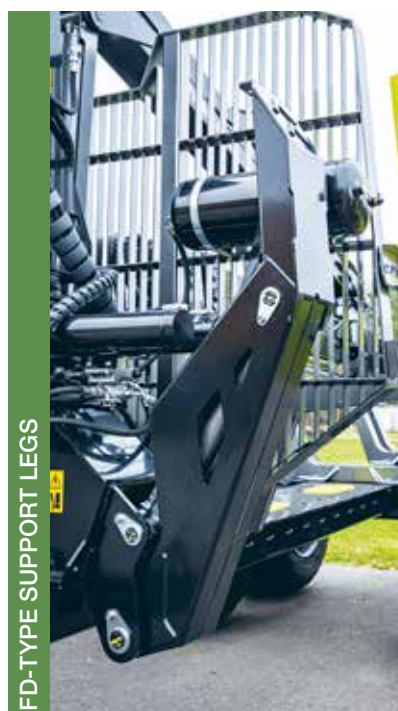
**Parker or Danfoss joysticks**

**GRAPPLES**



	MASS (kg)	AREA (m <sup>2</sup> )	DIMENSION A (mm)	DIMENSION B (mm)	DIMENSION C (mm)	DIMENSION D (mm)	DIMENSION E (mm)
<b>PALMS C02</b>	69	0,15	1040	670	410	60	305
<b>PALMS C1</b>	88	0,18	1230	690	480	80	315
<b>PALMS C3</b>	114	0,23	1465	760	500	69	340
<b>PALMS C5</b>	148	0,265	1400	800	580	80	380
<b>Palms C6 energywood</b>	127	0,21	1475	760	500	60	370
<b>Palms C7 energywood</b>	148	0,245	1400	800	580	80	380
<b>Cutting head Nisula 175E</b>	183	0,245	765	680	760	80	520
<b>Gravel bucket GB3</b>	81	0,36 / 200 l	1520	930	843	-	574

**SUPPORT LEGS**



# ADDITIONAL EQUIPMENT



Biobox



Top seat



LED-work lights with safety glass



Loading area widening for forwarder type bolsters



Working platform with ladder



Two models of foldable rear lights







**PALMS 4 WD (roller drive between wheels)**



**Base frame for sorting**



**Support links for first bolster pair**



**Radio-controlled winch**



**Oil pump**

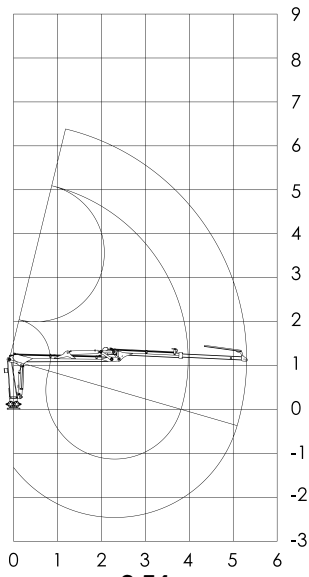


**Joystick holders**

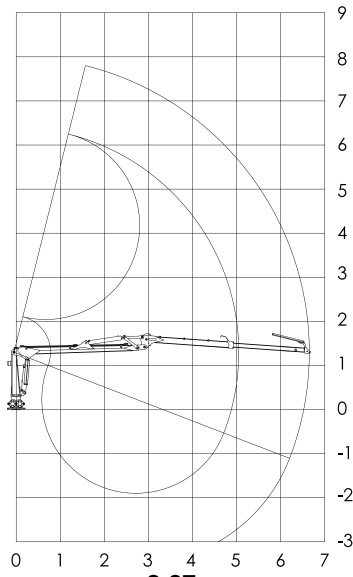


**BB remote**

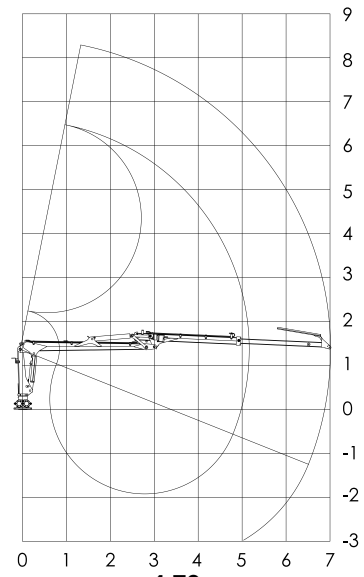
# LIFTING DIAGRAMS



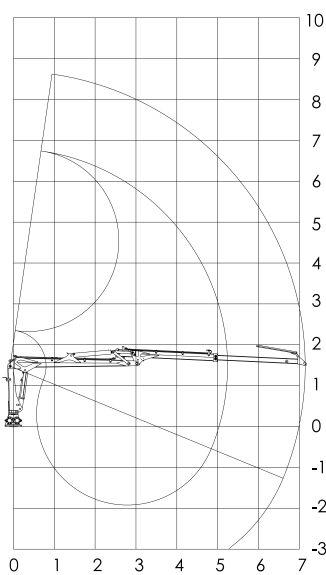
**2.54**



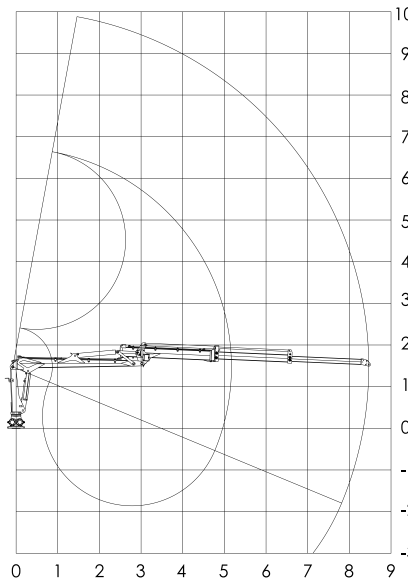
**3.67**



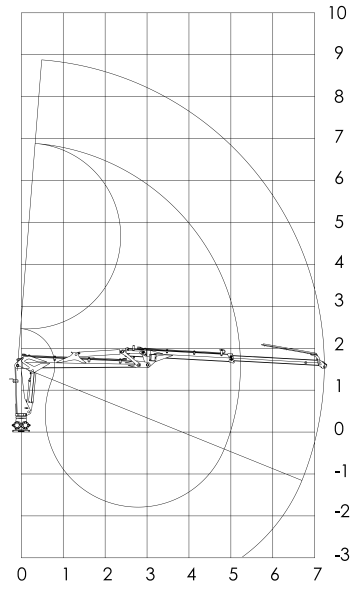
**4.70**



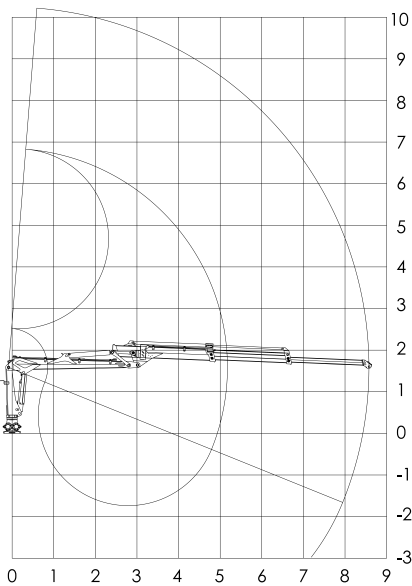
**5.72**



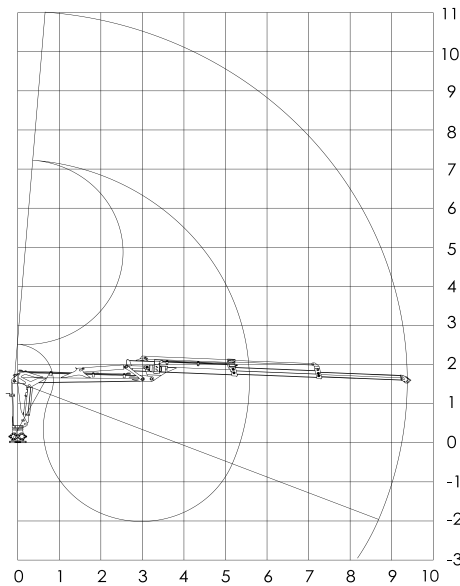
**5.85**



**7.72**



**7.86**



**7.94**



# PALMS

## **Palmse Mehaanikakoda LLC**

Võsupere küla, Vihula vald 45202, Lääne-Virumaa, Estonia

**Tel:** (+372) 3255 375 **Fax:** (+372) 3255 378

**E-mail:** info@palms.eu

### **Sales and info**

Tel: (+372) 3255 375

### **Production**

Tel: (+372) 3255 376

### **Spare Parts**

Tel: (+372) 3255 508

**WWW.PALMS.EU**

