

# BUYERS' GUIDE

---

BESPOKE PAPER BAGS

# CONTENTS

## **INTRODUCTION**

### **1\_ BUILD THE BAG**

1.1\_OVERVIEW

1.2\_PRICING OVERVIEW

1.3\_BAG SIZE AND SHAPE

1.4\_MATERIAL TYPES

1.5\_PAPER FINISHES

1.6\_HANDLE TYPES

### **2\_ DESIGN & PRINT**

2.1\_COLOUR OPTIONS

2.2\_ADDITIONAL FINISHES

2.3\_RIBBON TYPES

2.4\_DESIGN YOUR BAG

### **3\_DELIVERY & AFTERCARE**

3.1\_LEAD TIME

# INTRODUCTION

By giving you the information you need to make the best decision possible, we help you create a bag specific to your needs.

At Precious Packaging we pride ourselves on offering unique, creative and quality-focused products.

Our Buyers' Guide is designed to help you understand the wide variety of options available to you as a customer, a complete source of information, including all the features available as well as an overview of our most popular products.

# 1\_ BUILD THE BAG

# 1.1 OVERVIEW

## Rope Handle



£ £ £ £ £  
 🚚 🚚 🚚  
**MOQ: 50 units**

## Ribbon Handle



£ £ £ £ £  
 🚚 🚚 🚚  
**MOQ: 50 units**

## Ribbon Bow Handle



£ £ £ £ £  
 🚚 🚚 🚚  
**MOQ: 50 units**

## Twisted Handle



£ £ £ £ £  
 🚚 🚚 🚚  
**MOQ: 1000 units**

## Flat Handle



£ £ £ £ £  
 🚚 🚚 🚚  
**MOQ: 1000 units**

## Handleless



£ £ £ £ £  
 🚚 🚚 🚚  
**MOQ: 1000 units**

## Die Cut Handle



£ £ £ £ £  
 🚚 🚚 🚚  
**MOQ: 50 units**

## Insert Ribbon Handle



£ £ £ £ £  
 🚚 🚚 🚚  
**MOQ: 50 units**

## Closed Loop Handle



£ £ £ £ £  
 🚚 🚚 🚚  
**MOQ: 50 units**



**Approximate Cost**  
**Approximate base cost of bags.** Any additional finishes and dimensions will affect the final cost.

**MOQ**

**Minimum Order Quantity**  
**The minimum number of bags that can be ordered.** Increasing your order volume will decrease your unit cost.

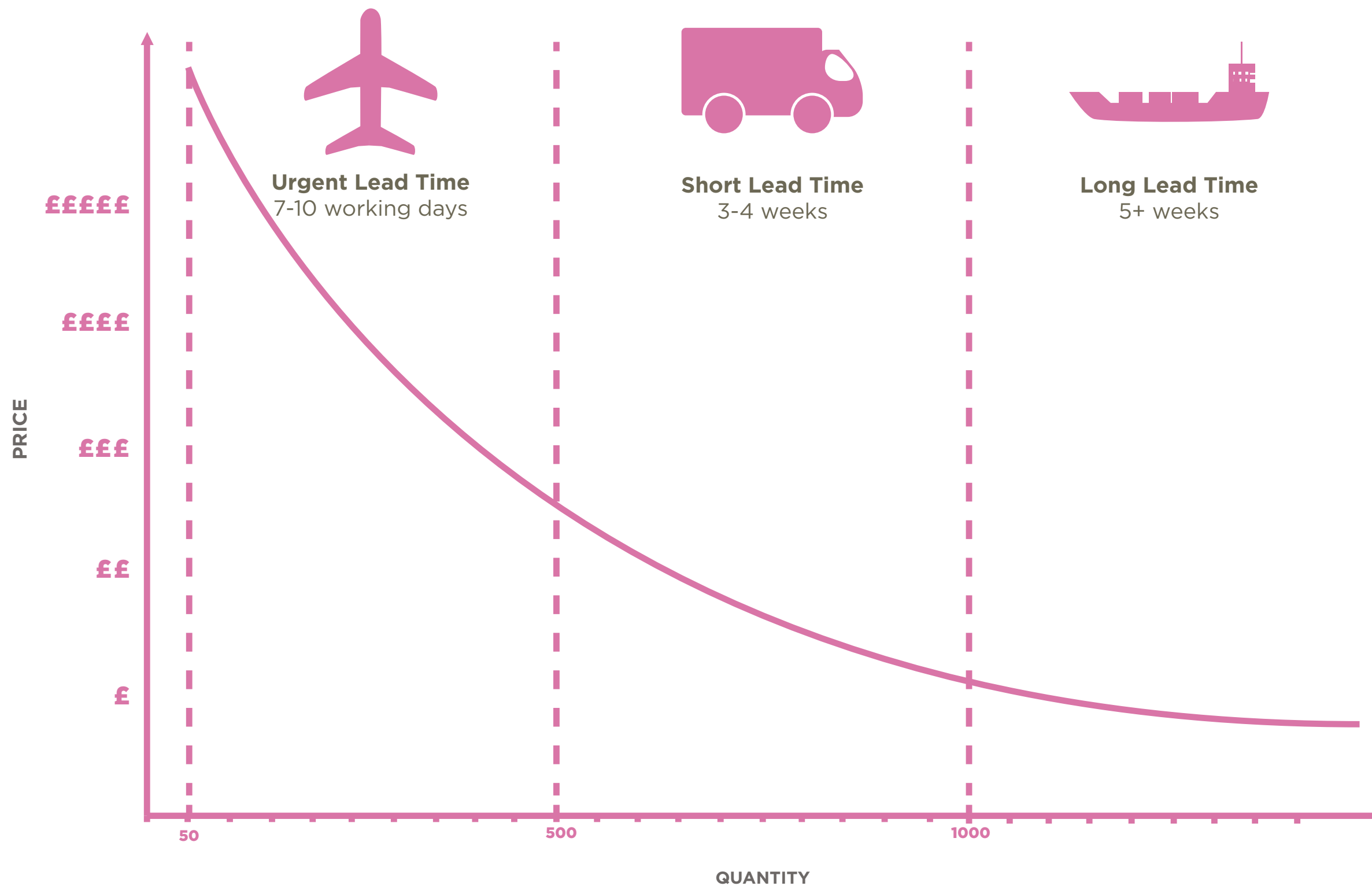


**Lead Time**  
**Approximate time it will take for bags to be delivered.** Can be increased or decreased to suit your needs and budget.

## 1.2 PRICING OVERVIEW

This graph gives an overview of the cost of an order depending on quantity ordered and the chosen lead time.

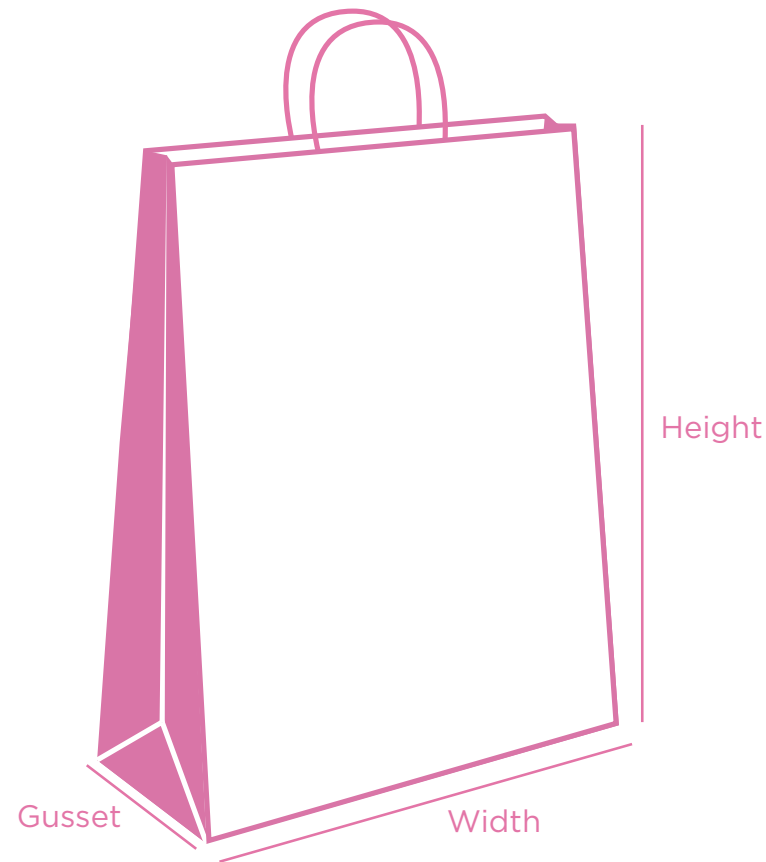
A larger order quantity and/or a longer lead time will decrease the price per unit, therefore be much more cost effective.



## 1.3 BAG SIZE & SHAPE

### Step 1: Choose the size in millimetres (WxGxHmm)

All bags are made bespoke to a size to fit your needs, here are some examples of common sizes and uses



#### Suits/Dresses/Clothes

**XX Large**  
(540 x 120 x 420mm)

#### Tops/Jeans/Jackets



**Extra Large**  
(400 x 130 x 350mm)

#### Shirts/Tops



**Large**  
(320 x 120 x 380mm)

#### Corporate Gifts/Shoes



**Medium**  
(250 x 120 x 350mm)

#### Accessories



**Small**  
(180 x 80 x 200mm)

#### Jewellery



**Extra Small**  
(150 x 80 x 200mm)

## 1.4 MATERIAL TYPES

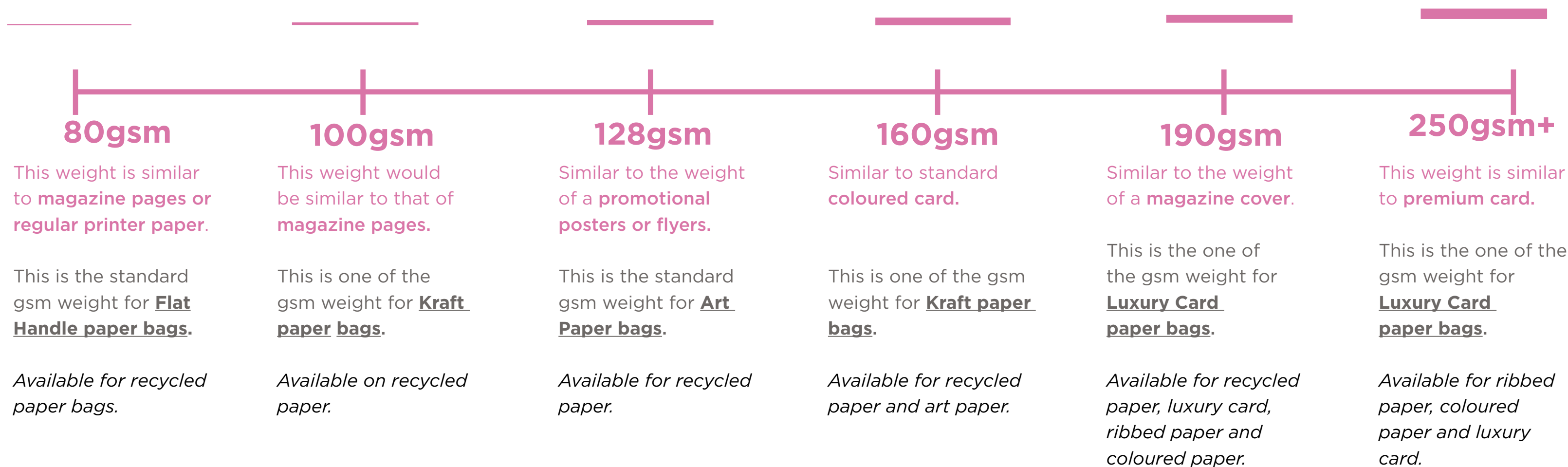
### Step 2: Select your preferred paper weight

Alternative to white kraft. Suitable for darker colours, ideal for simple designs.

This material is lighter than luxury card and perfect for photographic prints.

A lighter material that is also eco-friendly. Ideal for simple designs.

A thicker material that is strong and common material for luxury bags.





## 1.5 PAPER FINISHES

### Step 3: Select your preferred paper finish

Available on all Kraft Paper Carrier Bags

££££££

**Coated**  
Available on all Kraft Paper Carrier Bags

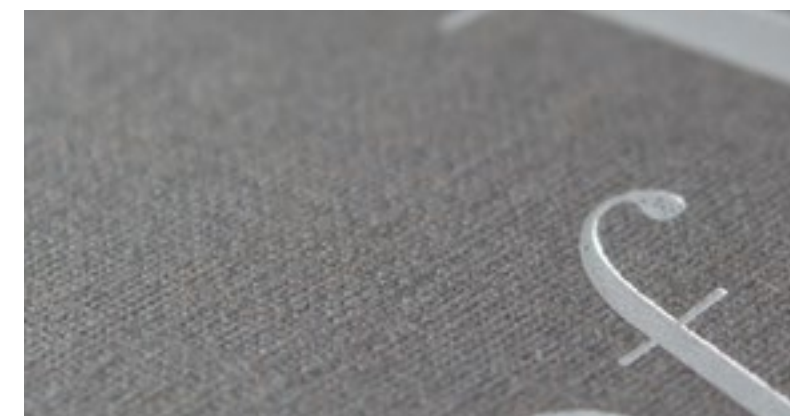
££££££

**Matte**  
Available on all Paper Carrier Bags

££££££

**Gloss**  
Available on all Luxury Card bags

££££££



**Embossed**  
Available on all Paper Carrier Bags

££££££

**Coloured Paper**  
Available on all Kraft Paper bags

££££££

**Ribbed (Matte/Gloss)**  
Available on all Kraft Paper

££££££

**Textured Paper**  
Available on all Paper Carrier Bags

££££££

## 1.6 HANDLE TYPES

### Step 4: Select your preferred handle

Available on all paper type materials and finishes.

Available on all paper type materials and finishes.

Available on all paper type materials and finishes.

Available on brown and white kraft paper bags.

Available on all paper type materials and finishes.

Available on all paper type materials and finishes.

Available on all luxury card bags.

Available on all brown and white kraft paper bags.

# 2 \_ DESIGN & PRINT

---

## 2.1 COLOUR OPTIONS

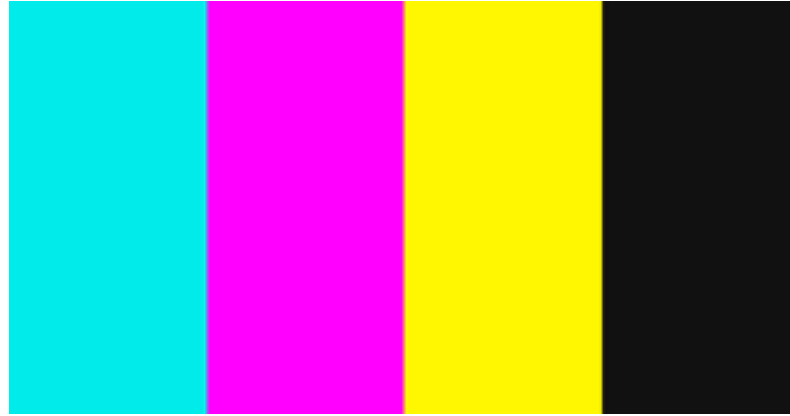
### Step 5: Select your print colours



#### Pantone Specific

Used on designs with four or less colours.

*Available on all paper finishes.*



#### CMYK

Used on designs with five or more colours.

*Available on all paper finishes.*



#### Special Pantone

Includes metallic, pastel and neon.

*Available on all paper finishes.*



#### Full Colour

Used for photographic prints.

## 2.2 ADDITIONAL FINISHES

**Step 6 (optional):** Choose any additional finishes to add to your design



Available on all Paper Finishes in gold, silver, bronze, etc



Shiny varnish added to bag in any design.



Available on all Paper Finishes



Embossed metallic hot foil available on all paper finishes in gold, silver, bronze, etc.

## 2.3 RIBBON TYPES

### **Step 7 (optional): Select your preferred ribbon**

Ribbons are not available on twisted handle, flat handle and handleless bags.

## 2.4 DESIGN YOUR BAG

### Step 8: Select a design package

#### File Specifications

- If you're unsure, don't worry! All files including PDFs will be reviewed by our team.
- **Vector format illustrations and logos** - .ai, .eps and .pdfs
- **Photographs** - .jpg, .tiff, and .pdfs at 300dpi.
- Have a look at our [Design Guides](#) for more information on designing bags.

	STANDARD For when you know what you want <b>FREE</b>	ADVANCED SAMPLE For when you have a good idea <b>£350</b>	DESIGN CONSULTATION For when you need to be inspired <b>£600</b>
2D Net	✓	✓	✓
Pantone / CMYK Colour Matching	✓	✓	✓
Bespoke Product Specification	✓	✓	✓
Bitmap to Vector Logo conversion			✓
Design Options		✓ Up to 3 designs	✓ Up to 10 designs
Product Design Options			✓
3D Artwork		✓	✓
One-on-One Consultation with the Design Team, in person			✓
Pre-Production Sample of exactly what you want		✓	✓
Continuous support over phone/email	✓	✓	✓

# 3 \_ DELIVERY & AFTERCARE

---



## 3.1 LEAD TIMES



### Urgent Order

Delivered within 7 working days  
(UK made or airfreighted in  
Europe).

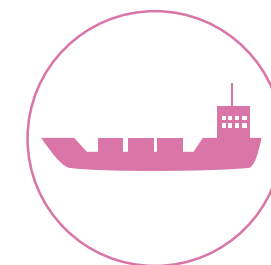
£££££



### Short Lead Time

3-4 weeks (Made in Europe)

£££££



### Long Lead Time

5+ weeks (Made in Asia)

£££££

### Need samples?

Sample packs are available and completely refundable when you purchase printed packaging.

Click [here](#) for more information.

### Need storage?

We also offer discounted warehouse facilities for all our customers.

Talk to one of our Customer Account Managers for more information on [0845 338 1741](tel:08453381741)