



www.shimotor.co.kr

# Ensure Your Success with SAEHAN

 **SAEHAN** ELECTRONICS CO., LTD.





# CONTENTS

---

- 1. Corporate Profile**
- 2. Facilities**
- 3. Products**
- 4. Project History**
- 5. Sales**





# Corporate Profile

## History

- 1971 : Establishment
- 1985 : Developed High Precision Machining parts
- 1986 : Developed Hybrid Stepping Motor
- 1998 : Certified 100PPM for Machining parts
- 2007 : Developed BLDC motor

## Capital

Paid-in capital: \$2,000,000

## Network

8 Countries overseas representatives

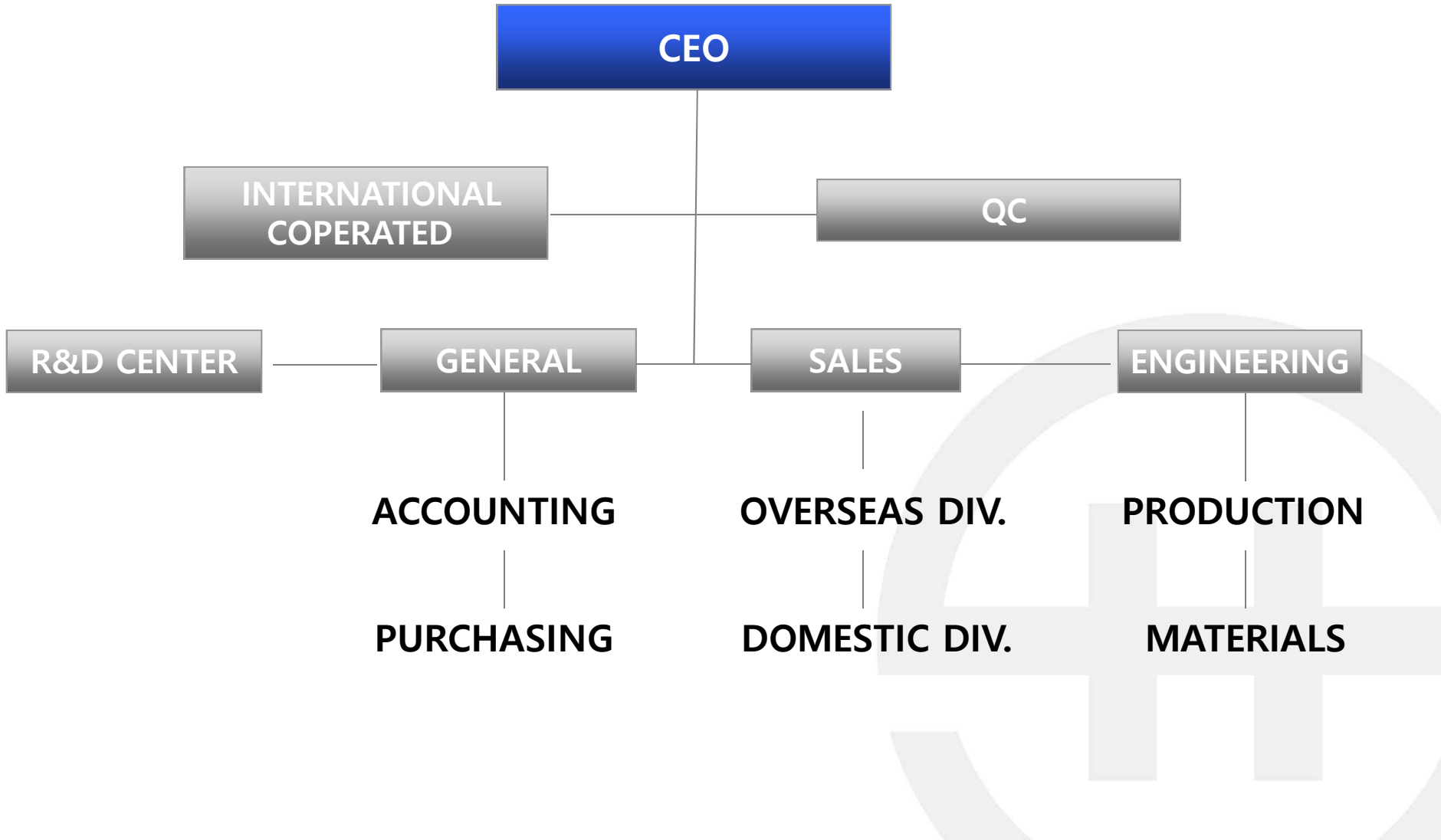
## Subsidiaries

Saeshin corp.





# Organization





# Facilities

## High Precision machining section

- ▶ CNC LATHE
- ▶ BAR MACHINNE
- ▶ MILLING MACHINE



## Electric motor section

- ▶ HIGH SPEED PRESS – 125,80,50 TON
- ▶ CENTERLESS GRINDER
- ▶ CNC LATHE
- ▶ HONING MACHINE
- ▶ ADHESIVE PAINTING UNIT
- ▶ DEBURRING M/C
- ▶ MAGNETIZER
- ▶ WINDING M/C



# Products

## Electronic motor section

- ▶ Hybrid Stepping motor
- ▶ BLDC Motor

## High Precision machining parts section

### Automotive industries

- ▶ Impeller Cap & Cover for car fuel pump
- ▶ Suspension Control solenoid valve parts
- ▶ Electronic car condenser cover parts

### Electronics industries

- ▶ Laser Beam Printer Motor parts
- ▶ Semiconductor cutter parts
- ▶ Electric Motor shaft



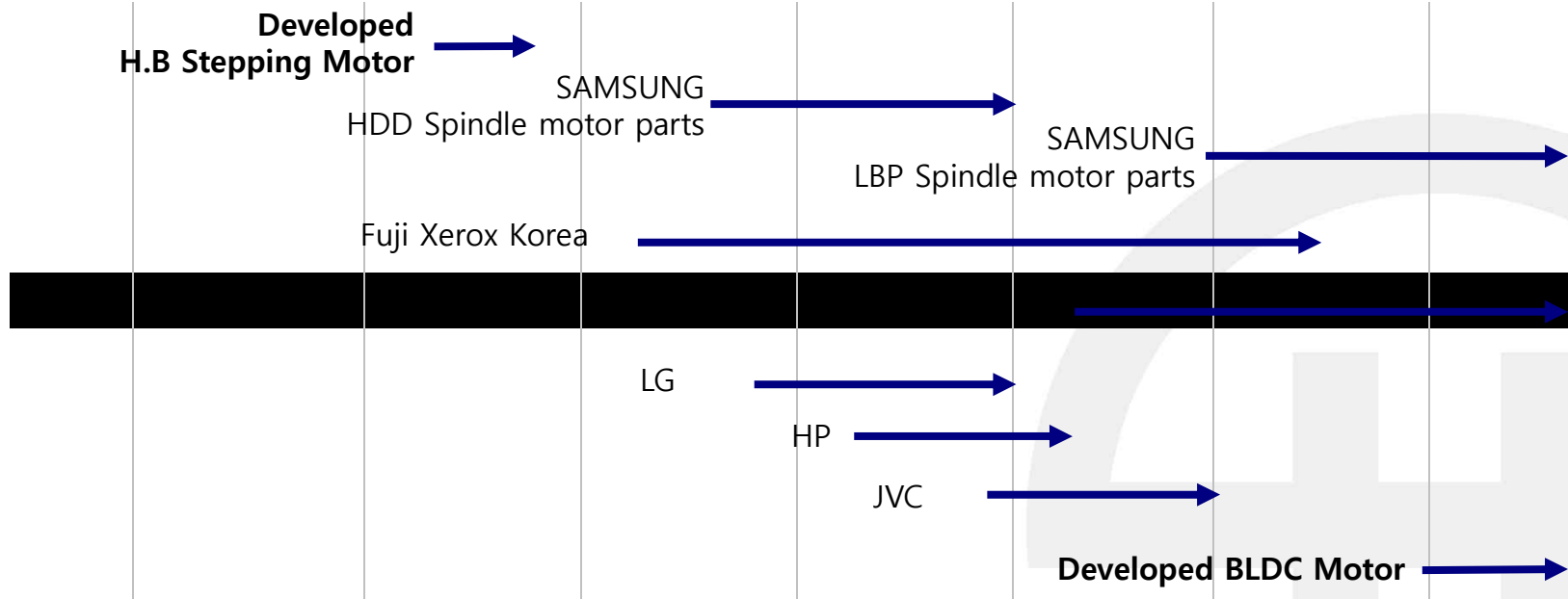


# Project History



Established

China Factory  
Established





# Major Customers

## SAMSUNG ELECTRONICS

- ▶ MULTU FUNTION PRINTER  
COPY MACHINE

## FUJI XEROX KOREA (1988~2005)

- ▶ COPY MACHINE
- ▶ MULTY FUNCTION PRINTER

## NAUTILUS HYOSUNG (1995~)

- ▶ BANK PRINTER MACHINE
- ▶ ATM

## SE TECH(JAPAN) (2002 ~ )

- ▶ GAMMING MACHINE

## SEAGATE (2002~ )

- ▶ HDD MANUFACTURING SYSTEM

## NIDEK (JAPAN) 1999~

- ▶ OPHTHALMIC DIAGNOSIS EQUIPMENT





# Major Customers

## SINDORICHO (1999~)

- ▶ COPY MACHINE
- ▶ MULTY FUNCTION PRINTER

## LG CNS(1995~)

- ▶ BANK ATM MACHINE

## HP (1997~2002)

- ▶ SCANNER

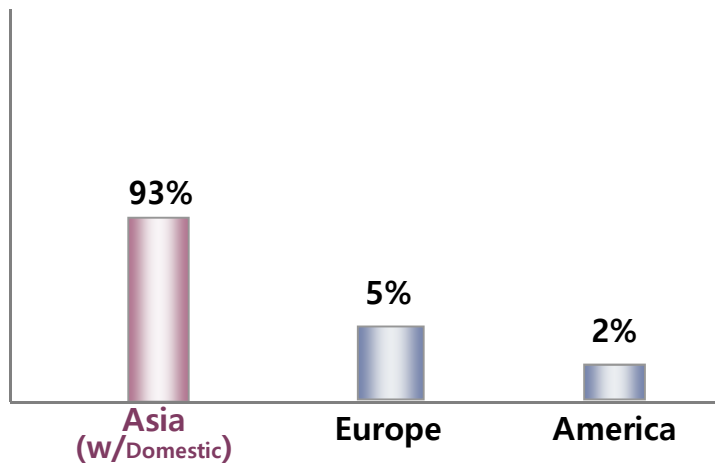




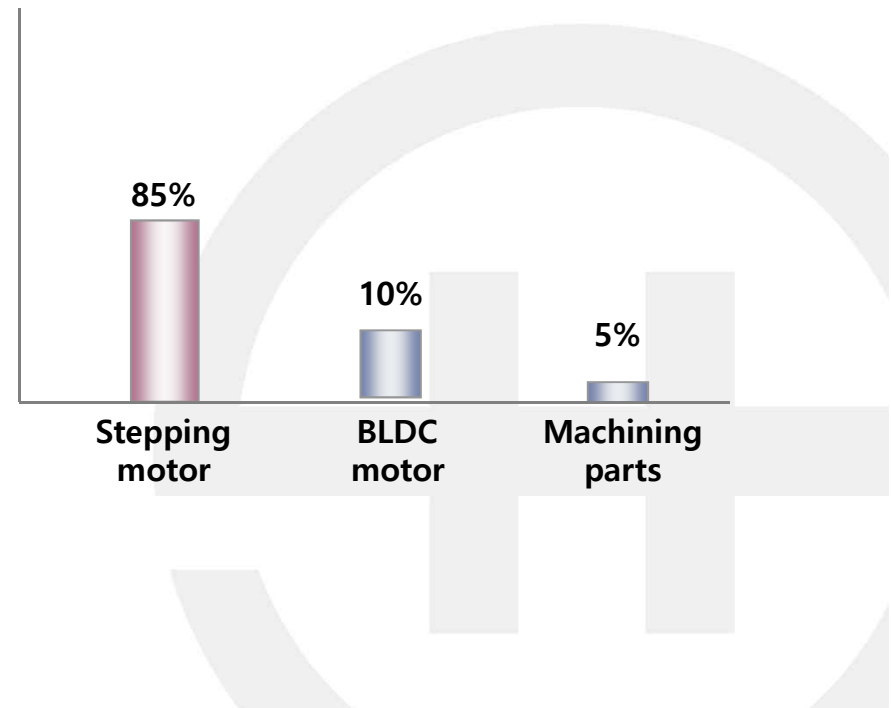
# Sales - 2016

## Sales distribution in 2016

### According to Region



### According to Product





www.shimotor.co.kr

**Thank You**

