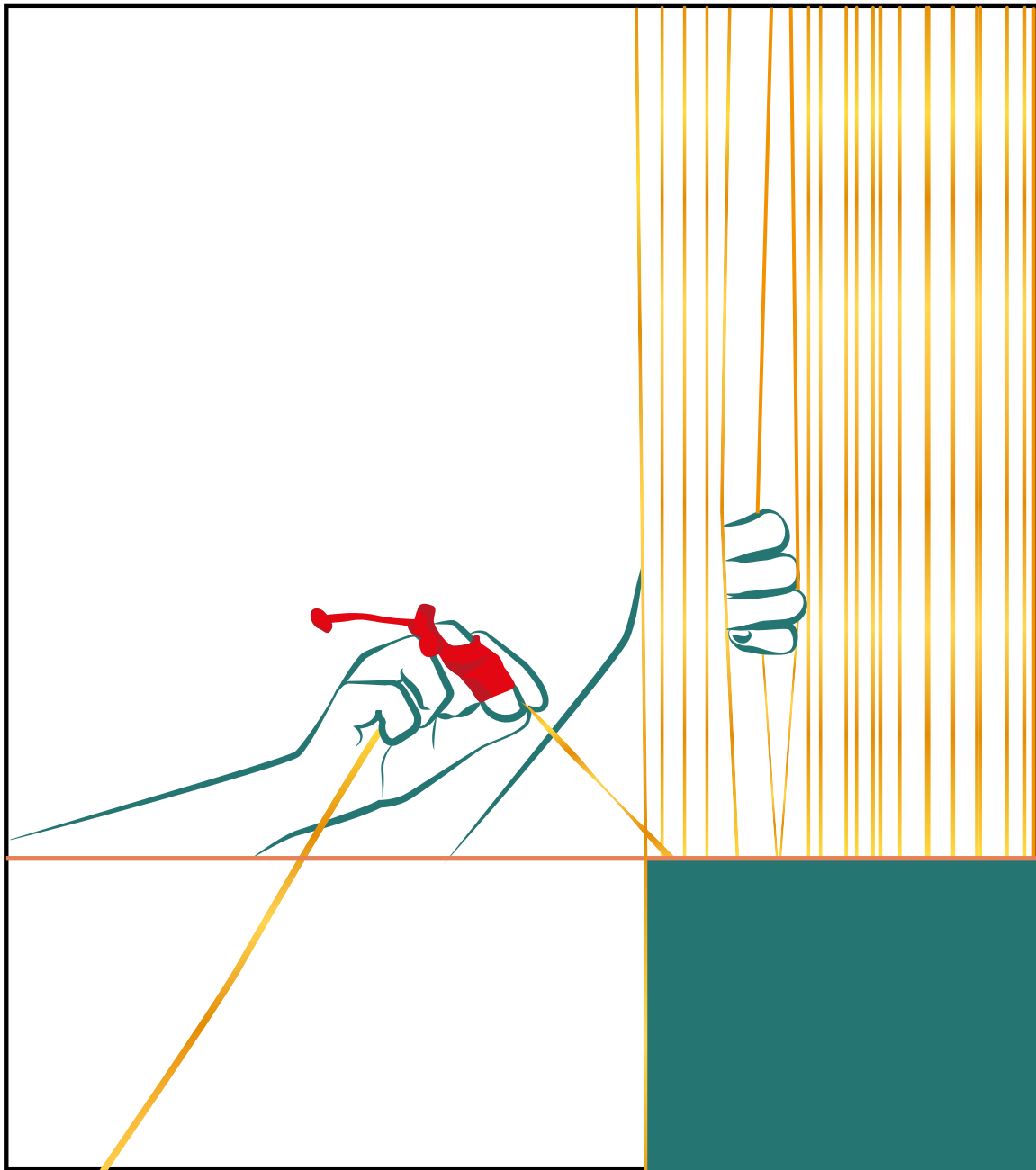


# SARAWAGI

Manufacturers of Hand-Knotted Nepalese Rugs



**THIS BOOK IS DEDICATED TO OUR  
SKILLED ARTISANS. OUR DEEPEST  
GRATITUDE FOR MAKING THIS  
JOURNEY POSSIBLE.**

# CONTENTS

<b>OUR STORY</b>	<b>1</b>
<hr/>	
<b>COLLECTIONS</b>	
SYNTHETIC SEAS	13
NAQASHI	23
RAGING CALM	33
ELEMENTS	39
INFINITY	47
OBLOMOV	61
SUNEETA	69
<hr/>	
<b>SARAWAGI SCHOLARS</b>	<b>75</b>
<b>CONTACT</b>	<b>79</b>

# OUR STORY







## SARAWAGI



A pioneer in the art of rug-making for two decades, Sarawagi has gained the reputation of a versatile designer, innovative manufacturer, and a leading exporter of Hand-Knotted Nepalese rugs. The family owned company honours the age old tradition of Tibetan hand-weaving, while also trying to adapt to the needs of an ever changing world.

In order to maintain top level design confidentiality and to ensure quality with timely delivery, the entire process from customer engagement to product delivery remains fully owned and operated by Sarawagi. With our commitment towards customer satisfaction, our devoted team of designers, dyers, weavers, and washers bring every beautiful Sarawagi rug to life, knot by knot.

Our rugs are hand woven in Nepal, a land known

for her rugged beauty, a feeling subtly reflected in these little works of art. The suppleness of silk, combined with the warmth and comfort of wool is at the forefront of this traditional craftsmanship process, entirely done by hand from spinning, carding and dyeing to weaving, washing and finishing.

In addition to our hand-knotted division, we take great pride in our high quality Hand Tufted rugs, Kilims, and Hand Loom rugs, while working with a host of materials from Himalayan Wool and Nettle to Chinese Silk and Linen.

Our founder Dev Anand Sarawagi based the business model on the idea that business should do more good than damage. The idea of Inclusive Community Development is engrained in every aspect of our business, and resonates through our work.



# MATERIALS USED







## **TIBETAN WOOL**

The predominant ingredient in our rugs is the highly textured wool from the Tibetan mountain sheep. This wool's naturally oily property gives a lustrous sheen and texture to the rug. What's magical about this wool is that the more you use the rug, the shinier it gets. Unlike other wool, the strands of this wool remain upright once woven, so when you walk on our rugs or comb your fingers through the surface, the strands will not bend- they're good as new, every day!

## **CHINESE SILK**

The lustrous Chinese Silk adds a touch of sophistication to any room. When the silk is blended with Tibetan wool, it gives the rug a beautiful texture and shine.

## **NATURAL FIBRES**

We love using natural fibres like Hemp, Nettle, Jute, Soya, Linen, and Allo in our rugs. Allo, or Himalayan Nettle, is a natural fibre extracted from the Cannabis plant. It grows naturally in high altitudes, and is light, strong, and has a silk-like sheen. Allo is said to have the longest fibre in the plant kingdom, making it ideal for carpets. Allo harvest and processing serves as a source of livelihood to numerous local mountain communities. These natural fibres can be dyed or used in their natural color.





## **BAMBOO AND TENCEL**

Bamboo yarn is a natural fibre extracted from the Bamboo pulp, and is imported from China. It is an economical alternative to Chinese Silk and gives a beautiful sheen to the rug when blended with wool.

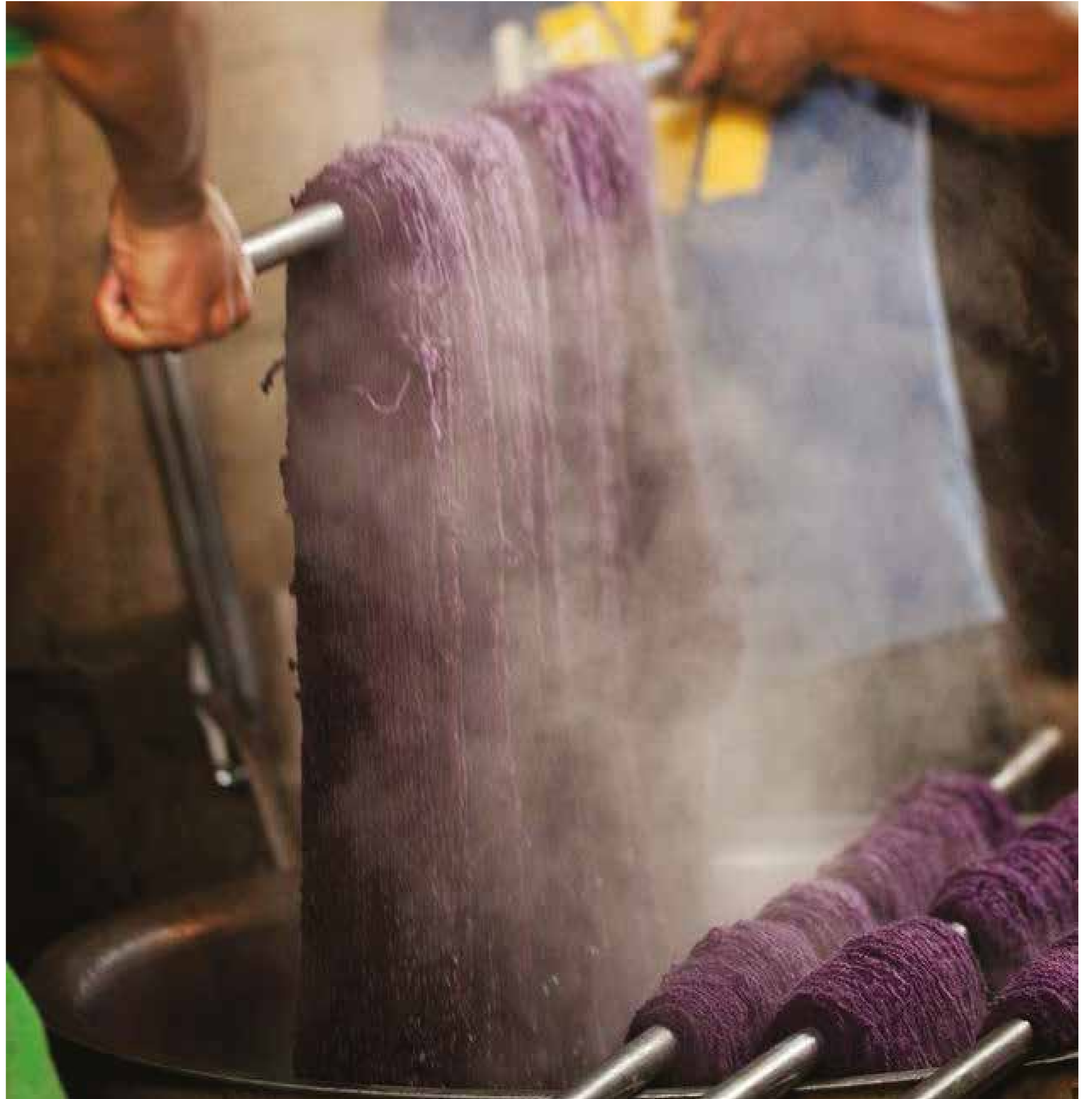
Tencel on the other hand is extracted from woodpulp and is a very popular alternative to Bamboo.

## **PET**

Recycled PET or polyethylene terephthalate yarn is repurposed from used plastic bottles, and we use it for both outdoor and indoor carpets.

## **ECONYL®**

It is a regenerated nylon extracted from ocean and landfill waste, made by the Italian company Aquafil. It takes color like a dream, comes in a dull and a shiny version, and can be repurposed infinitely. Sarawagi is proud to be the first company to make hand knotted rugs from 100% ECONYL®









A close-up photograph of a textured fabric, possibly a rug or carpet, featuring a complex pattern. The pattern consists of large, irregular shapes in shades of light blue and white, outlined in a dark blue. A prominent yellow stripe runs diagonally across the fabric. The texture is highly detailed, showing the individual fibers and the way the colors are woven together.

COLLECTIONS  
**SYNTHETIC SEAS**

NYLON ENGULFED



# SYNTHETIC SEAS

Hand knotted in 100 knots, in 100% ECONYL® regenerated nylon.

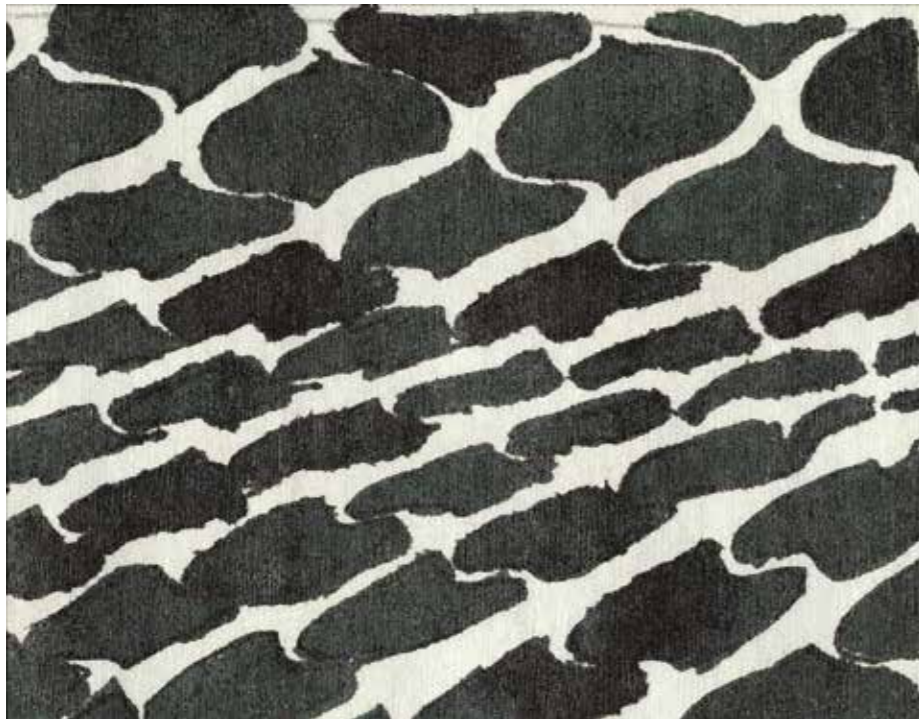


NYLON ENGULFED



GENTLE DISCHORD





SLICK SHADOWS

# ECONYL®

The Synthetic Seas Collection is made from 100% ECONYL® - Nylon regenerated from ocean and landfill trash, like fishing nets left underwater by large fishing operations. The designs depict fishing nets submerged under the ocean, rescued and repurposed into a beautiful and functional product by artisans using the age-old Tibetan hand-knotting technique.

The collection highlights familiar if not also iconic imagery from the ocean, namely ocean ripples mirrored on the sea bed, with more topical forms evocative of humanity's impact, in this case tangled fishing nets, layered into the final designs.

Complemented with a bold coastal and marine palette consisting of chilled turquoise blues, cool white tones, and dramatic deep navy and charcoal with a zap of golds and yellows, the collection designed by British designer Isobel Morris embodies the inviting spirit of the sea and the challenges facing our oceans.

Sarawagi's relationship with Aquafil and the designer Isobel Morris is serendipitous. It began

with a chat about 'sustainability' with friend and rug aficionado Michael Christie 'The Ruggist', and turned into a collaborative project between Sarawagi, The Ruggist, Isobel Morris Studios and Aquafil, the company that manufactures the ECONYL® regenerated nylon yarn.

We encourage you to head to [www.theruggist.com](http://www.theruggist.com) to read the five- part article on the process of making the first hand knotted carpet made with ECONYL® yarn.



*Designed by Isobel Morris*



SLICK SHADOWS





"By combining with the craft of handknotted carpet making, a sustainably produced fibre that also helps clean up the planet, this project dares to ask the questions we must ask if we are to solve the environmental problems facing our planet. Most notably, 'How can each of us help within our own industries?' and 'What new and newfound ways can we do things in order to accomplish this goal of righting the planet?' This is the attraction and the reason I became involved."

- Michael Christie 'The Ruggist'







THE EYE OF THE NET

'As a rug designer I was excited by the challenge that this project brings — ocean inspired pieces that don't damage the earth. I have a passion for eco-friendly solutions for wildlife and the environment, I'm dedicated to a better quality of life for myself, society, and future generations. Econyl offers a versatile solution for the rug and carpet industry and I'm proud to create designs with what I believe is the future of textiles.'

-Isobel Morris



GOLDEN RIPPLE

"When I look at a landfill, I see a goldmine,"

- Giulio Bonazzi,  
Founder and CEO, Aquafil.



JELLY FISH



ENTANGLED

"We feel fortunate to be able to re-use a fibre generated from 'garbage' to create something of value, as opposed to using virgin materials."

- Dev Anand Sarawagi,  
Founder and CEO, Sarawagi Rugs.



NET IN WAIT



# NAQASHI





# NAQASHI

Hand Knotted in Tibetan Wool and Chinese Silk.



SHALIMAR A



SHALIMAR B



SHALIMAR B

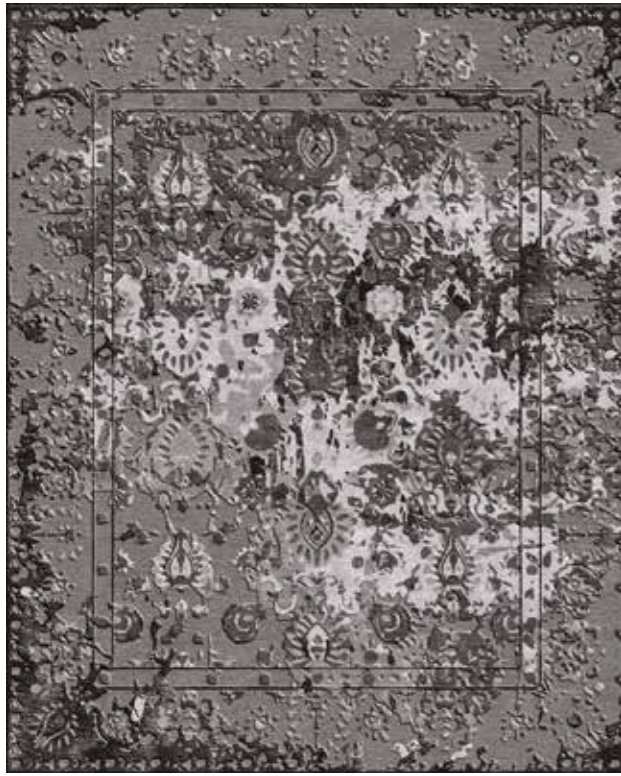


SHALIMAR C



SHALIMAR A





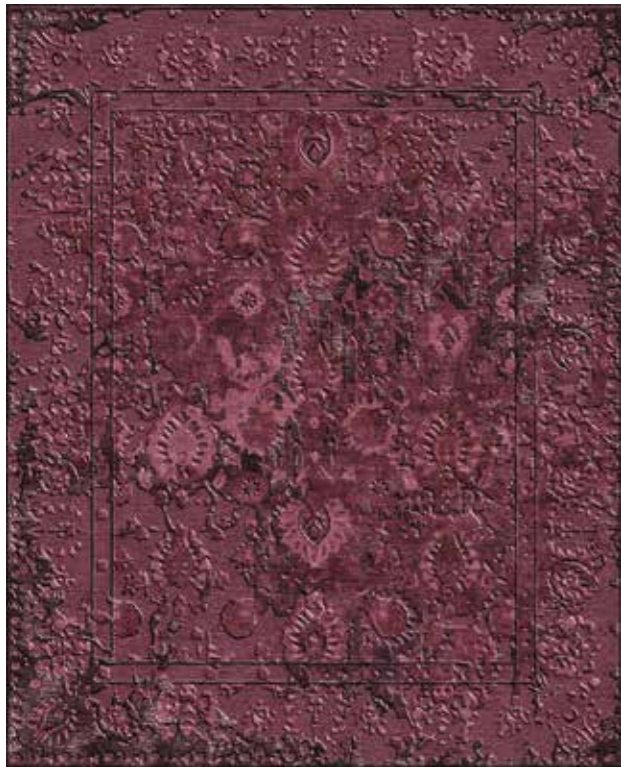
NISHAT A



NISHAT C



FATEHPUR A



NISHAT B



NISHAT C



FATEHPUR B



FATEHPUR C





IWAN A

The intricacy and workmanship of Persian and Mogul architecture have long inspired architects, designers and artists. The master architects of the Mogul era built timeless edifices, gardens and mausoleums. Naqashi, (pronounced nuh-kaa-shee) is Urdu for carved intricate motifs. The Naqashi collection draws from the carvings,

drawings and pietra dura on the structures, the walls, the Jharokha (enclosed balcony), the Iwan and Pishtaq (rectangular hall), and the Darwaza (carved gates) of Indian Mogul edifices. Colors go from muted greys to vibrant reds rooted in the shades of natural rocks used for construction like marble, granite and red sandstone.



IWAN B

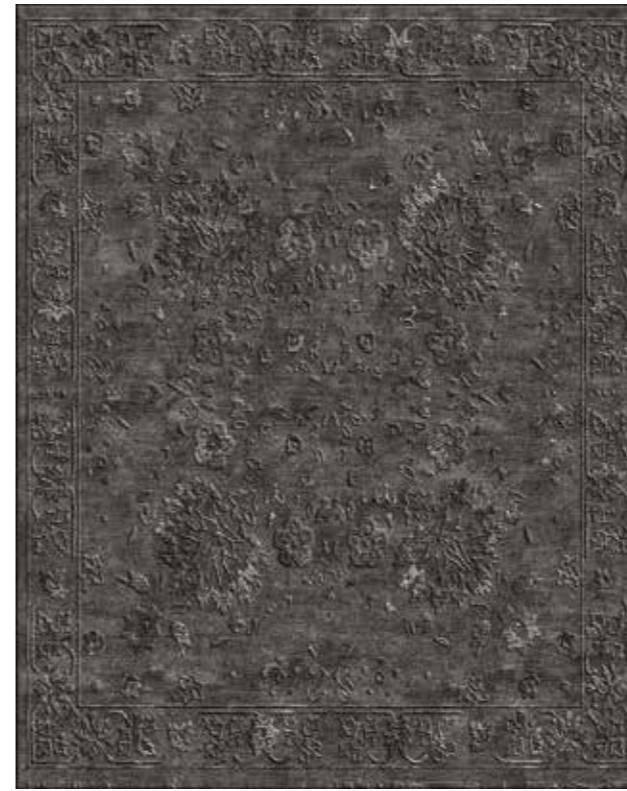




JHAROKHA A



JHAROKHA B



LAL BAGH B



LAL BAGH C



JHAROKHA C



LAL BAGH A



SHEESH MAHAL A



SHEESH MAHAL B



# RAGING CALM



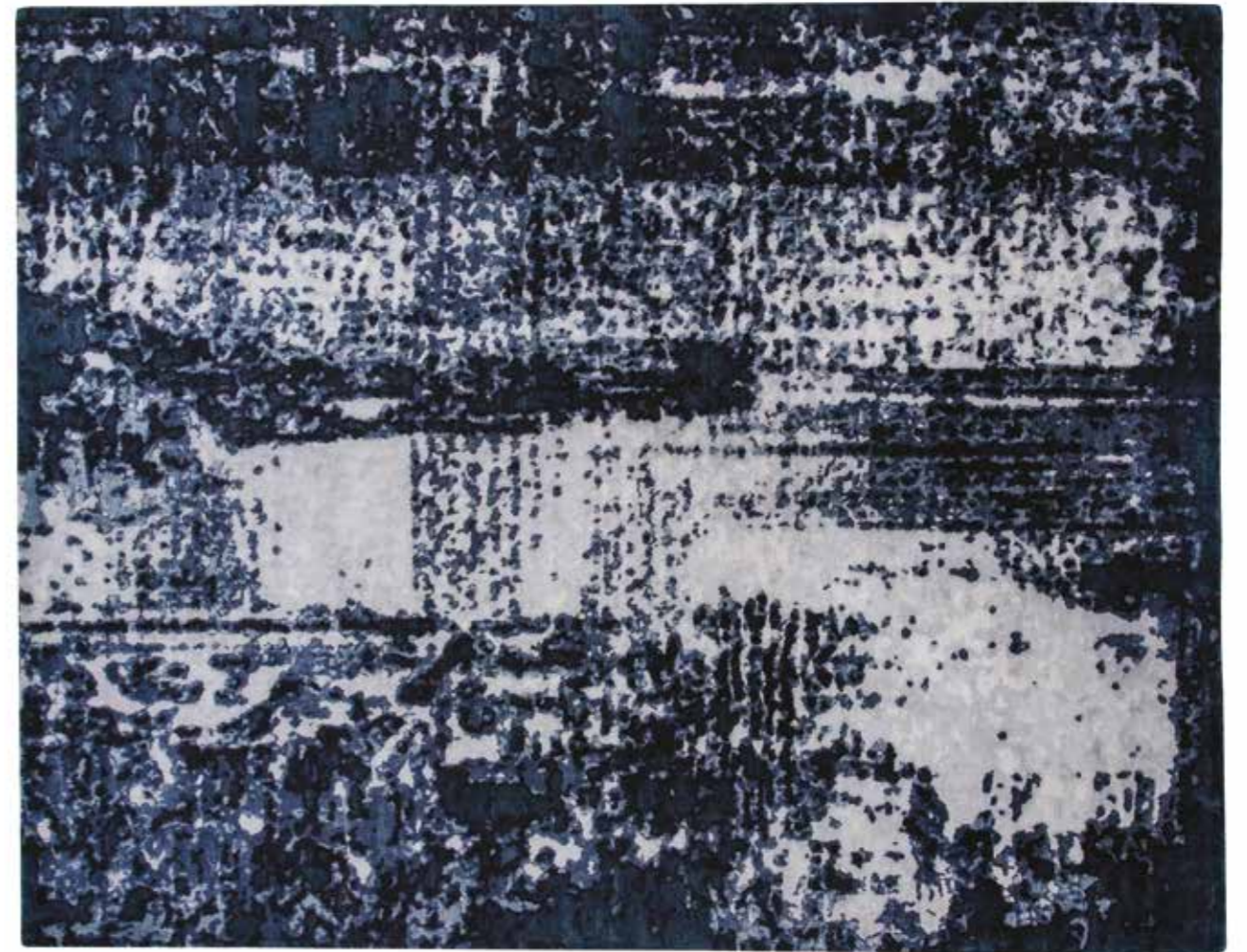


# RAGING CALM

Hand Knotted in Tibetan Wool and Bamboo Silk.



LAYLA



PARADISE CITY

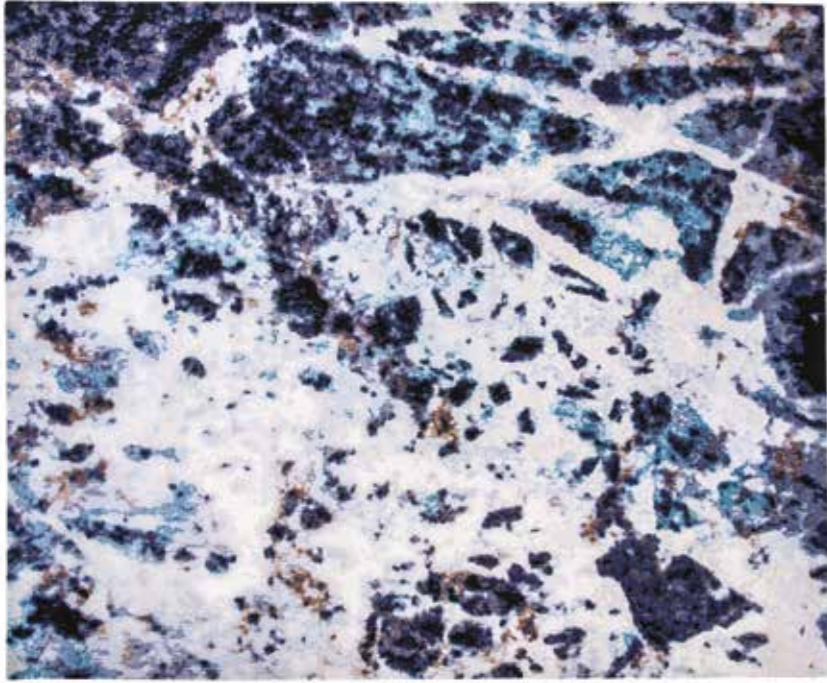


SWEET GEORGIA BROWN

"The only order in the universe is just a cycle of calm and chaos."

*-Toba Beta*

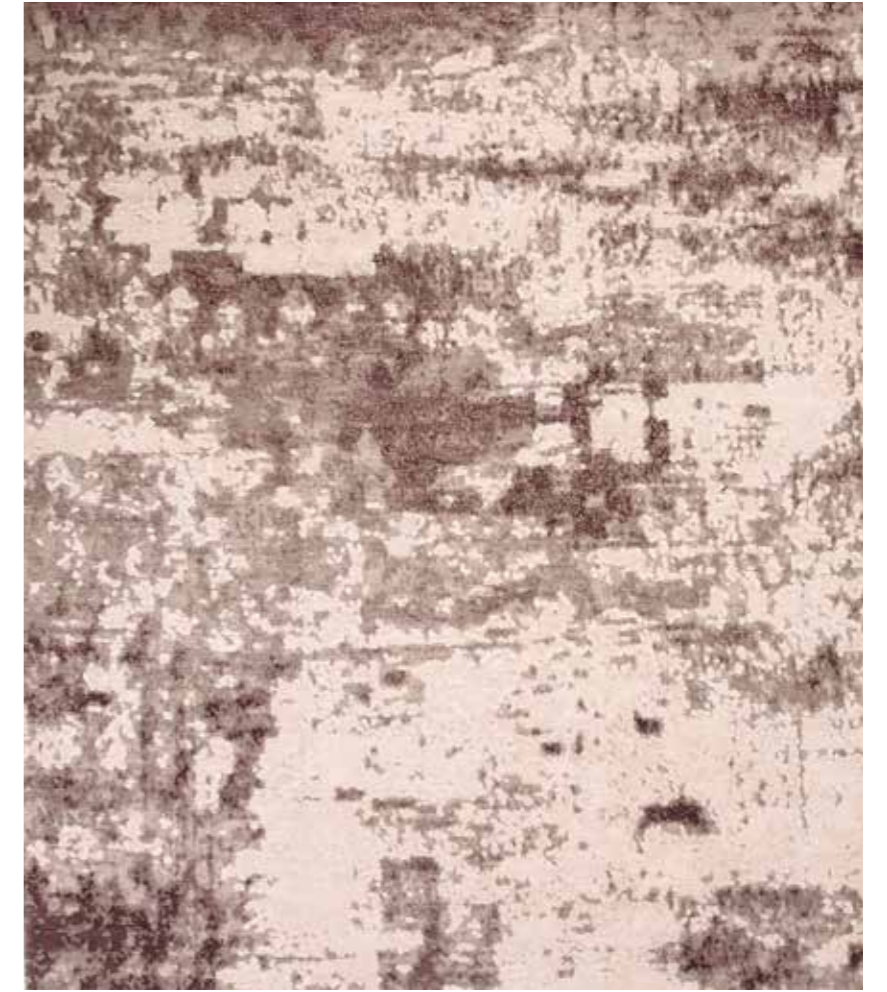




CRAZY DIAMOND



PARADISE CITY



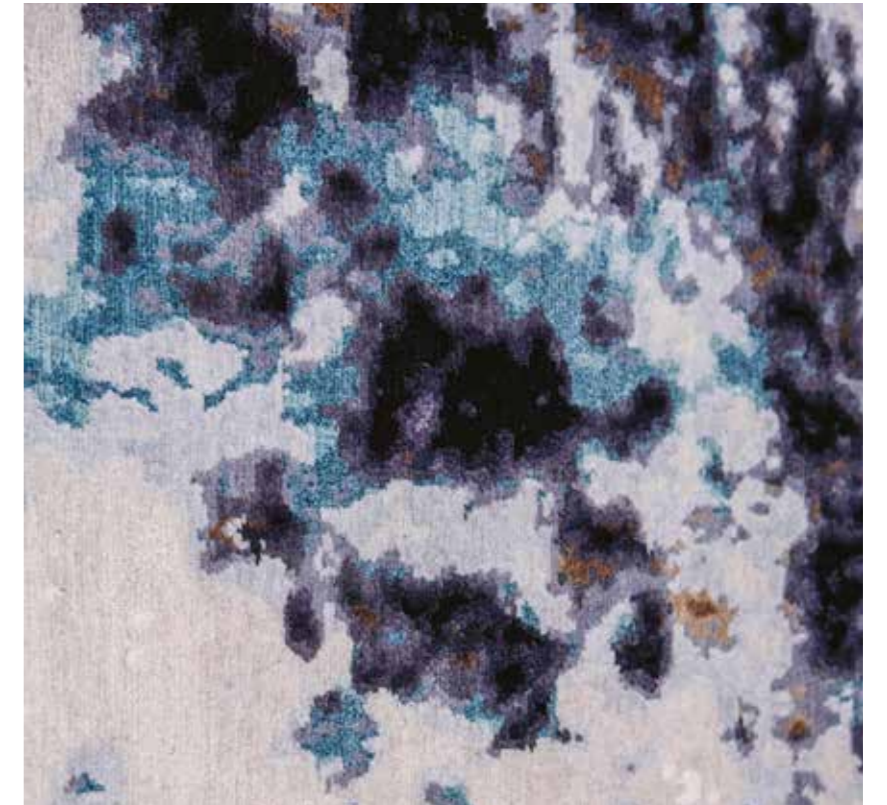
RHAPSODY



DREAM



SWEET GEORGIA BROWN (CLOSE UP)



CRAZY DIAMOND (CLOSE UP)



# ELEMENTS

SAHARA GOLD





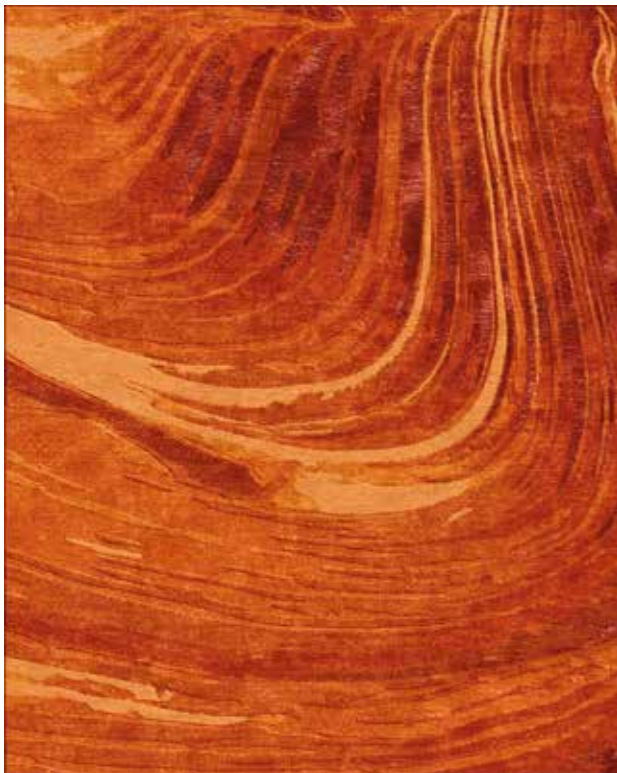
SAHARA TAN



DESERT ROSE TAN



DESERT ROSE GOLD



SAHARA GOLD

## ELEMENTS

Hand Knotted Tibetan Wool and Chinese Silk.

This collection pays tribute to Mother Nature and the five elements that sustain life on earth.

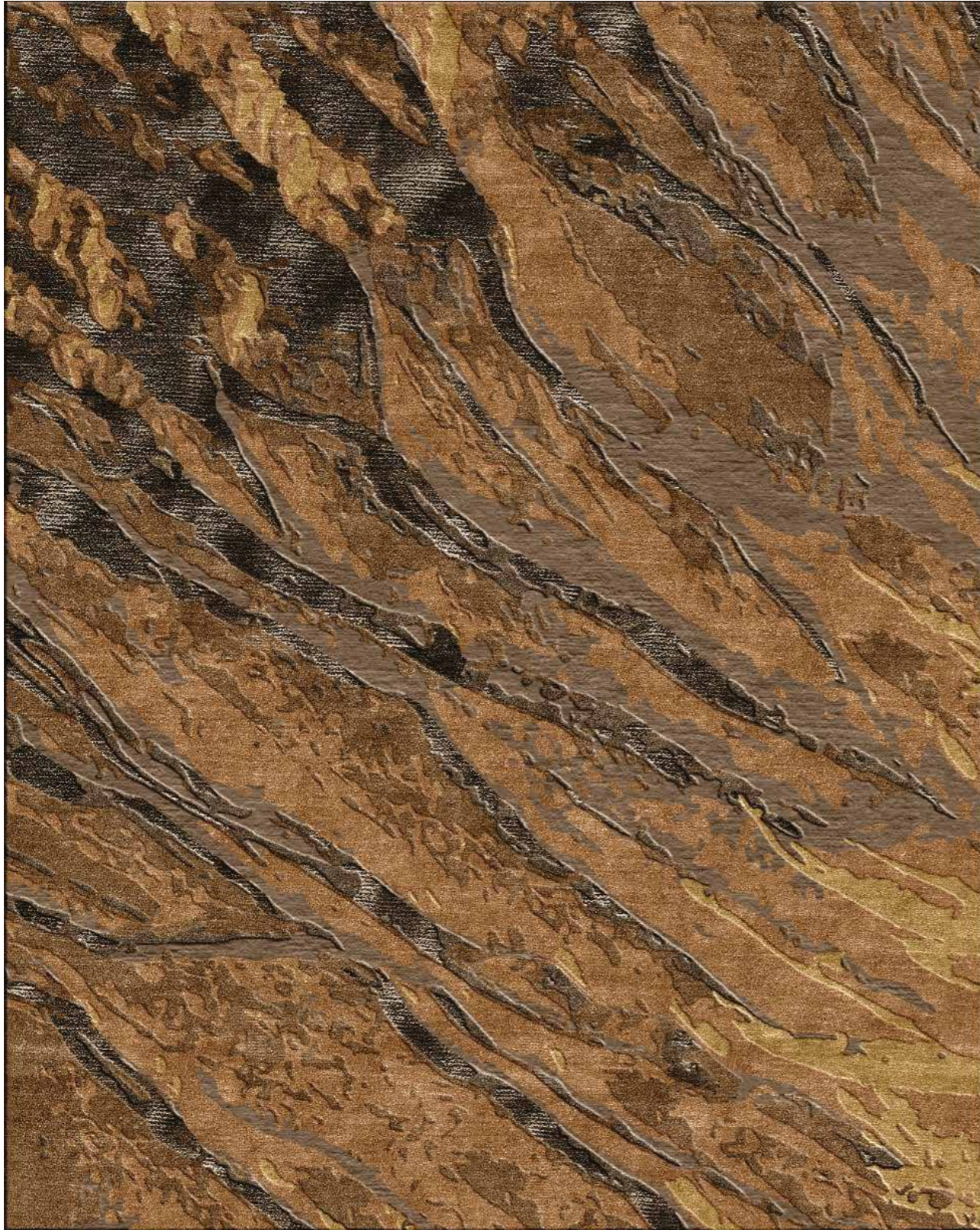


IPANEMA



IPANEMA GREY



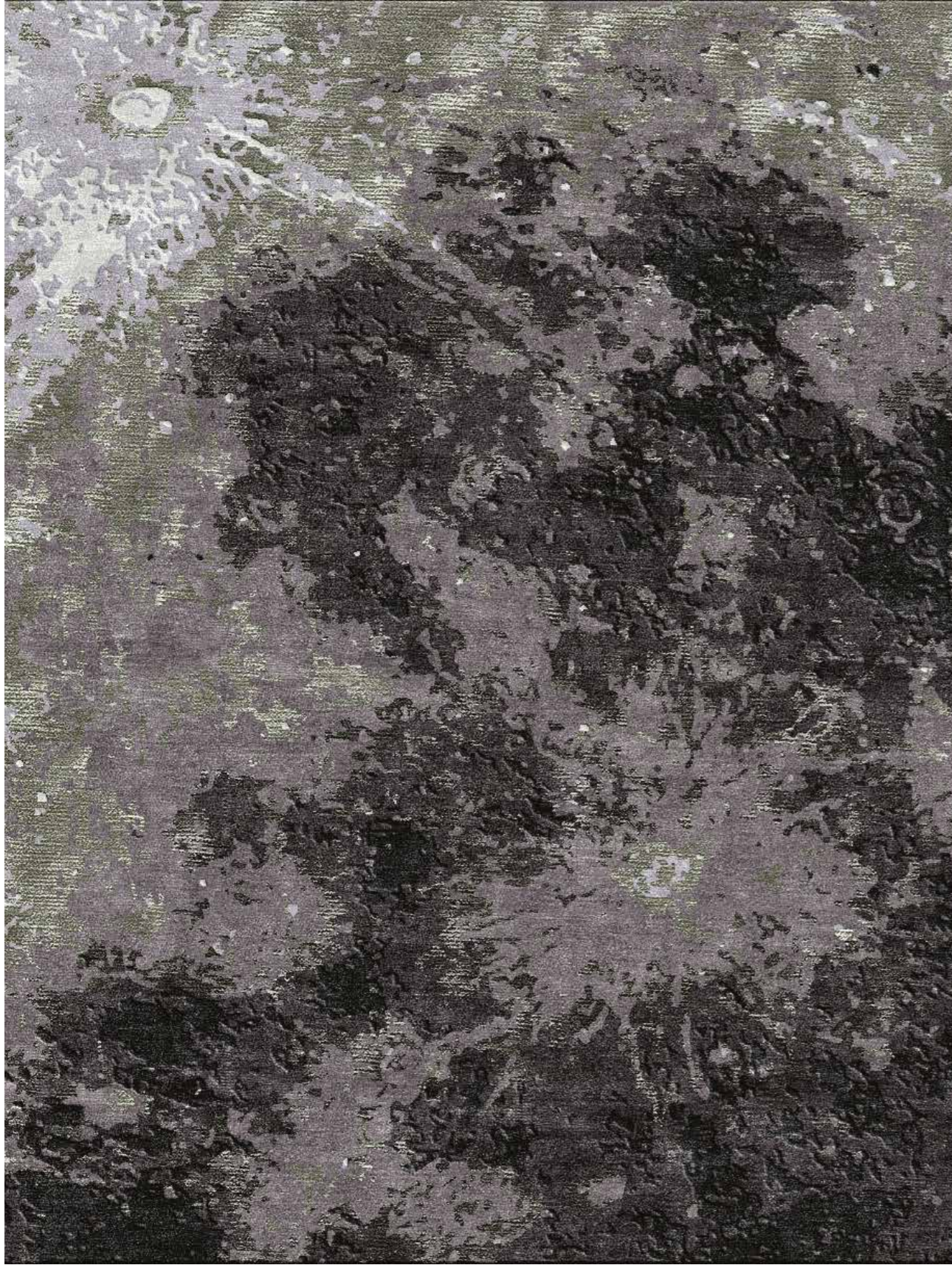


KILIMANJARO BROWN



KILIMANJARO BEIGE





GALAXY GREY



GALAXY BROWN



RIPPLES



DIVITREE



RIPPLES



INFINITY

CHROMALOOP - MINT



# INFINITY

Hand Knotted in Tibetan Wool and Bamboo Silk.



CADENZA - VANILLA



CHROMALOOP - MINT

Infinity explores the craft of hand-knotting by playing with lines and repetitions. Each rug is distinguished by a contemporary representation of fringes by using the twin-knotting Kilim technique. Contrasting hues interplay and meet together, and alternating loop & cut techniques create an infinity of lines, and lend an optical illusion to the surface.



Designed by Estelle Le Bozec

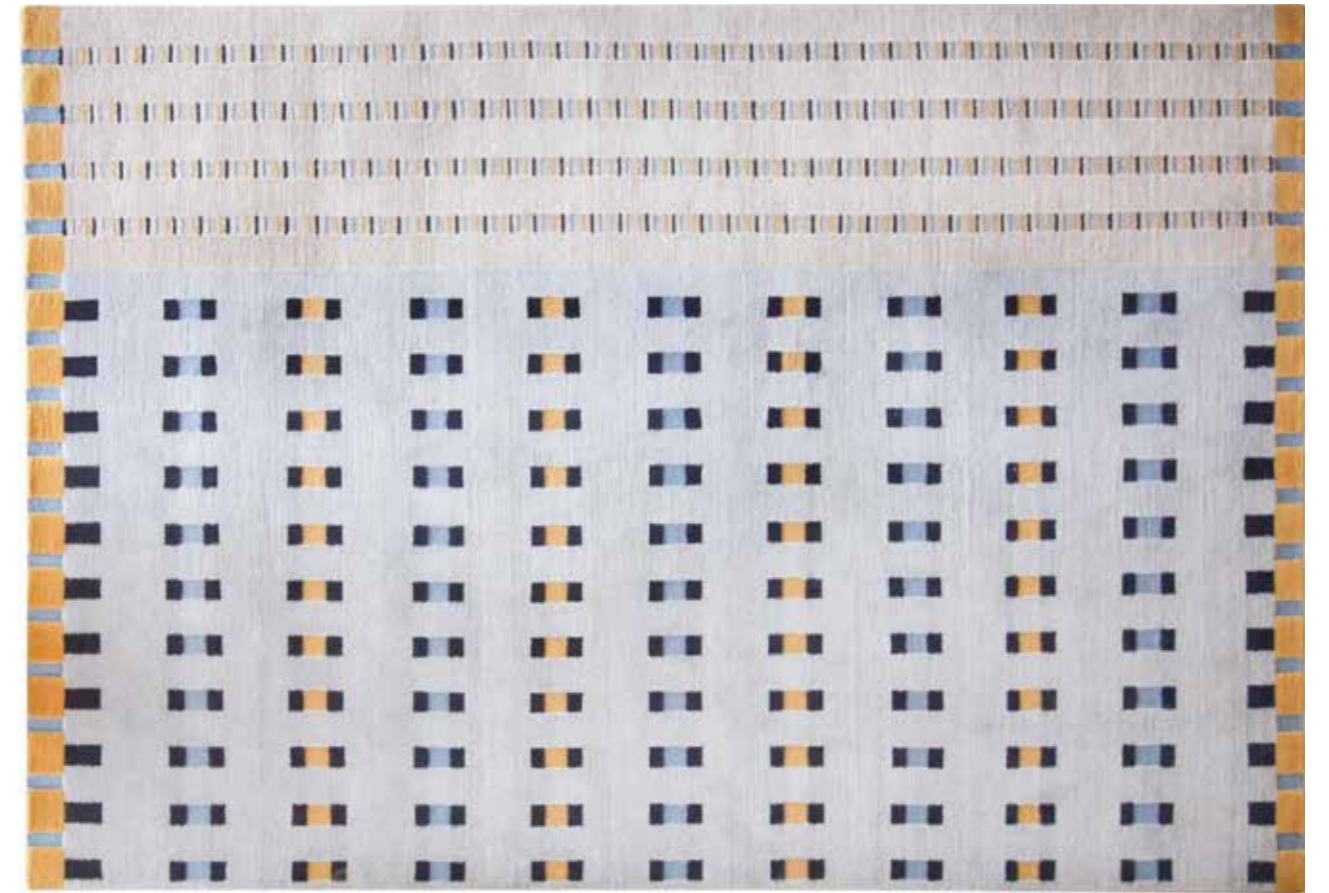
"Learning from the weavers the different techniques helped me a lot to understand all the possibilities in order to interpret in my designs. I believe that thanks to this kind of dialogue, craftsmen and designers can explore together the boundaries of the techniques and come to new possibilities."

- Estelle Le Bozec

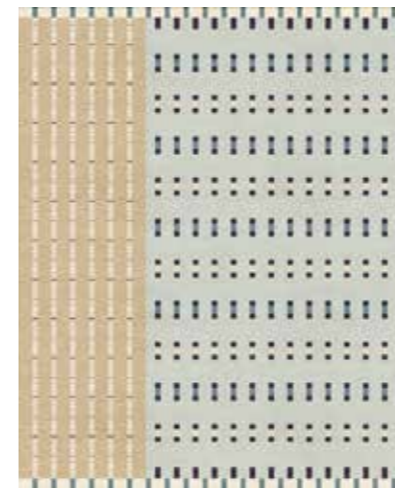




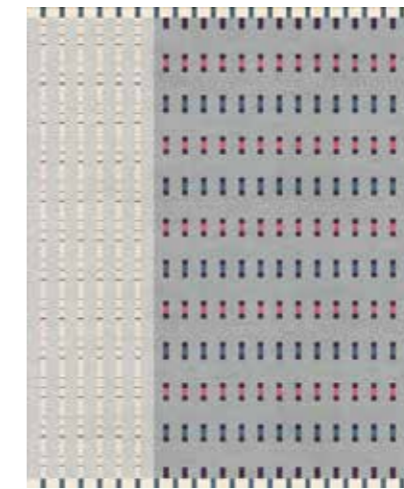
POINT CARRÉ - OCHRE



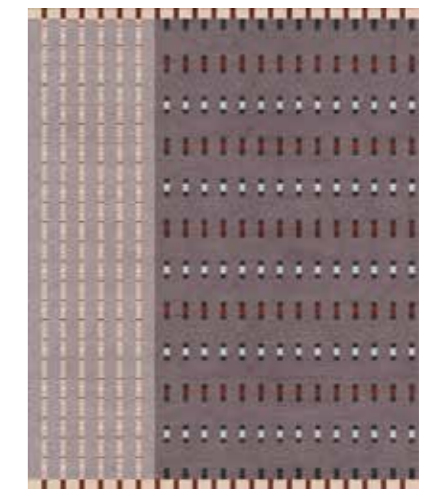
POINT CARRÉ - OCHRE



POINT CARRÉ - CHAMOMILE

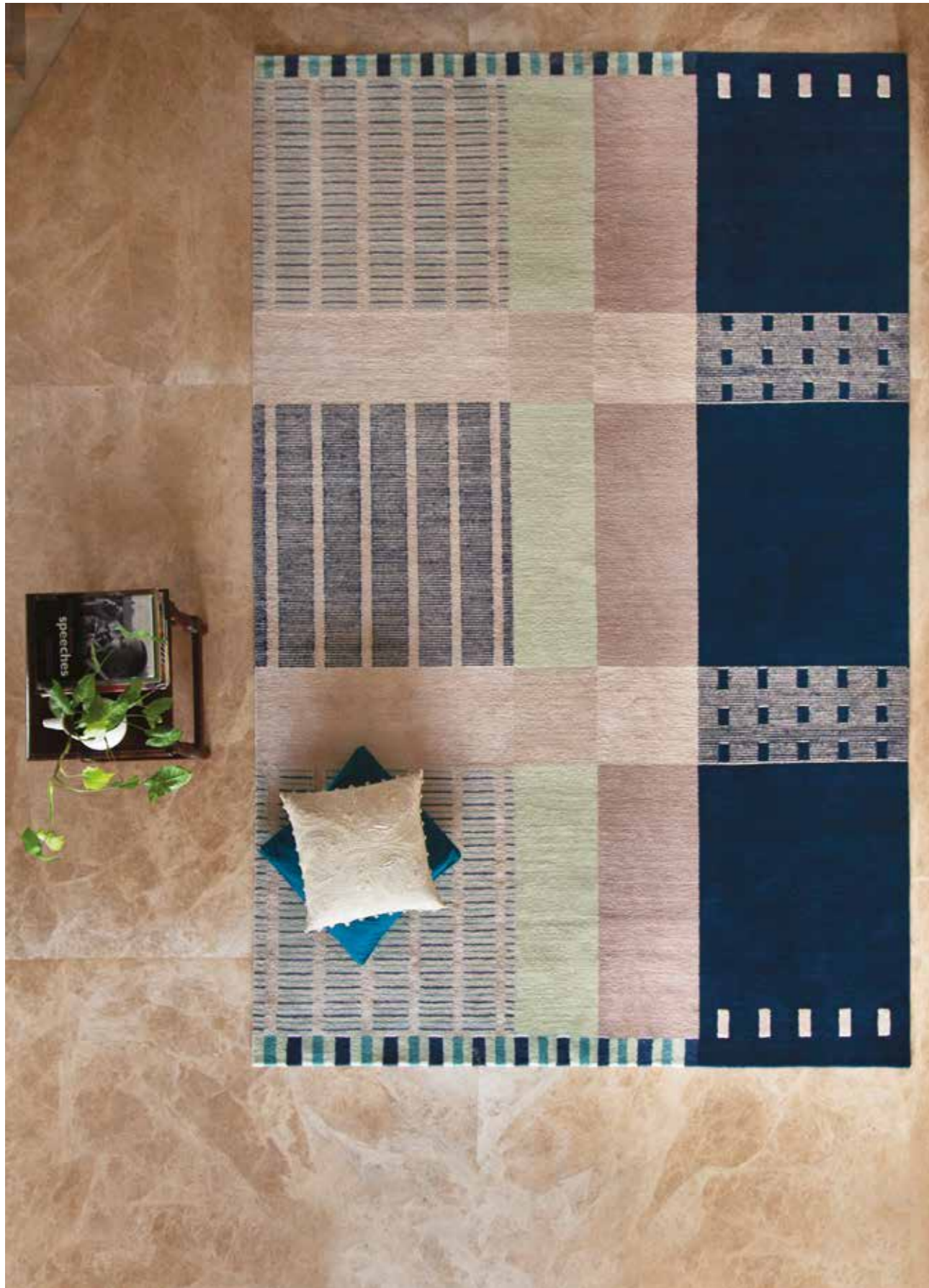


POINT CARRÉ - FIG



POINT CARRÉ - BLAZE





CHROMALOOP - MINT



CHROMALOOP - MINT



CHROMALOOP - GRAPHITE



CHROMALOOP - ARTIC



CHROMALOOP - CARMEL





EN MESURE - ZINC



EN MESURE - ZINC



EN MESURE - CAFÉ



EN MESURE - NAVY

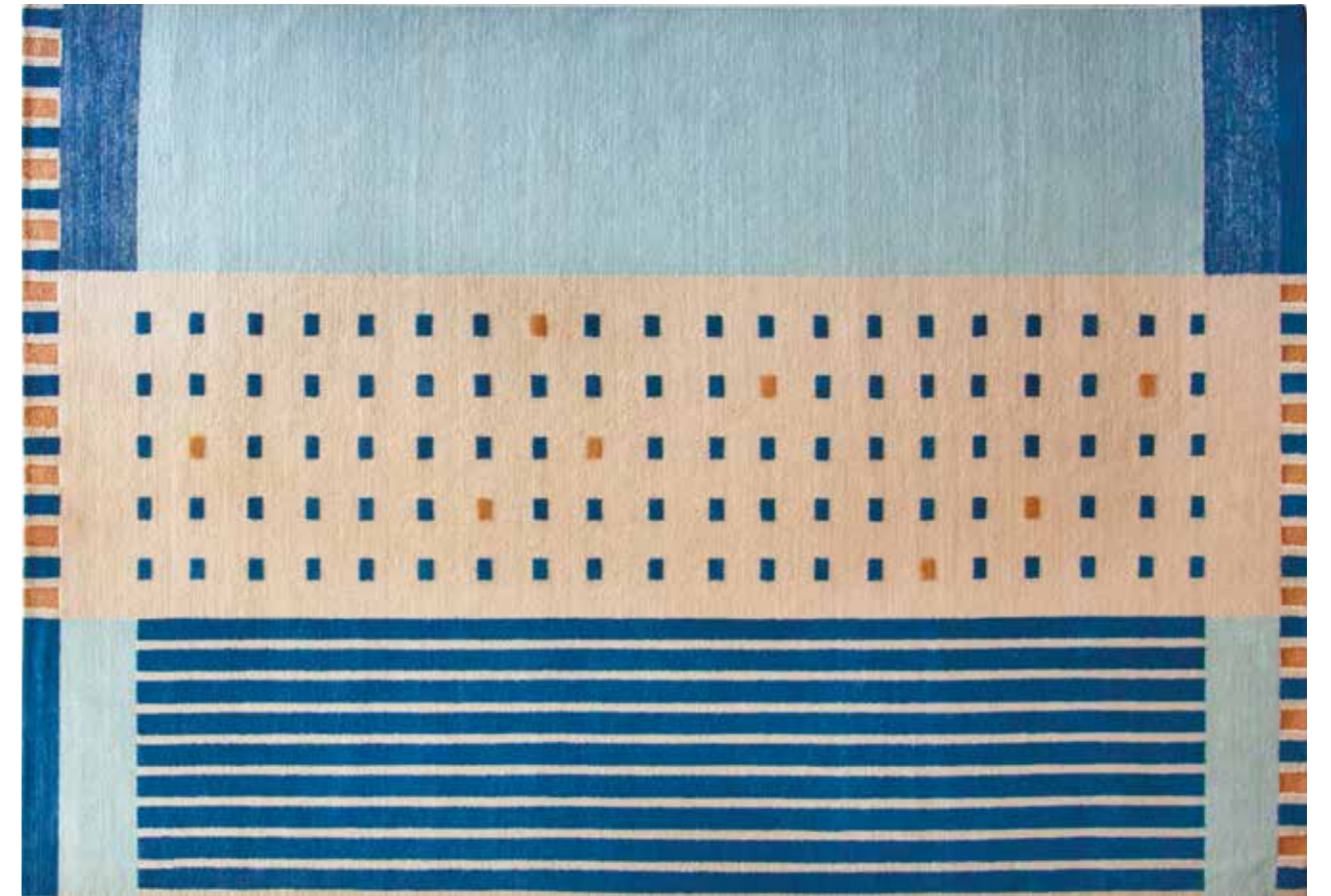


EN MESURE - WHIRL





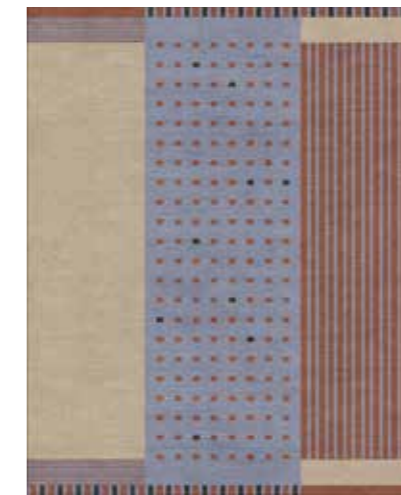
MÉTROPOLE - MIRAGE



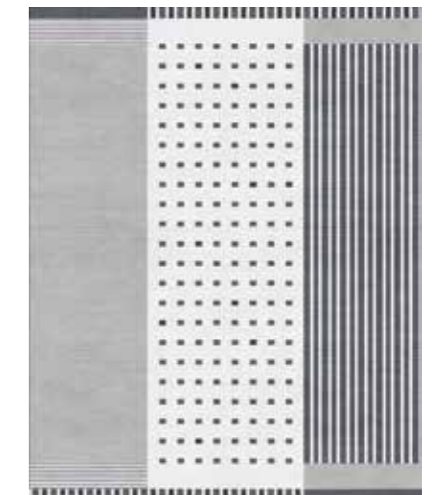
MÉTROPOLE - MIRAGE



MÉTROPOLE - BLUEBIRD



MÉTROPOLE - DUNE



MÉTROPOLE - ARDOISE





CADENZA - VANILLA



CADENZA - VANILLA



CADENZA - PLUM



CADENZA - THYME



CADENZA - CHARCOAL



**OBLOMOV**

ALLENHAM SILVER



# OBLOMOV

Hand Knotted in Tibetan Wool and Bamboo Silk.



DELAFORD BEIGE



ALLENHAM SILVER





DELAFORD BEIGE



SOMERSET GREY

When all the forces in your organism come into play, then life will begin to play around you as well. You'll see what your eyes are closed to now, and you'll hear what you've never heard. The music of your nerves will begin to play, you'll hear the music of the spheres, and you'll listen to the grass grow. Just wait, there's no hurry. It will come in its own time!"

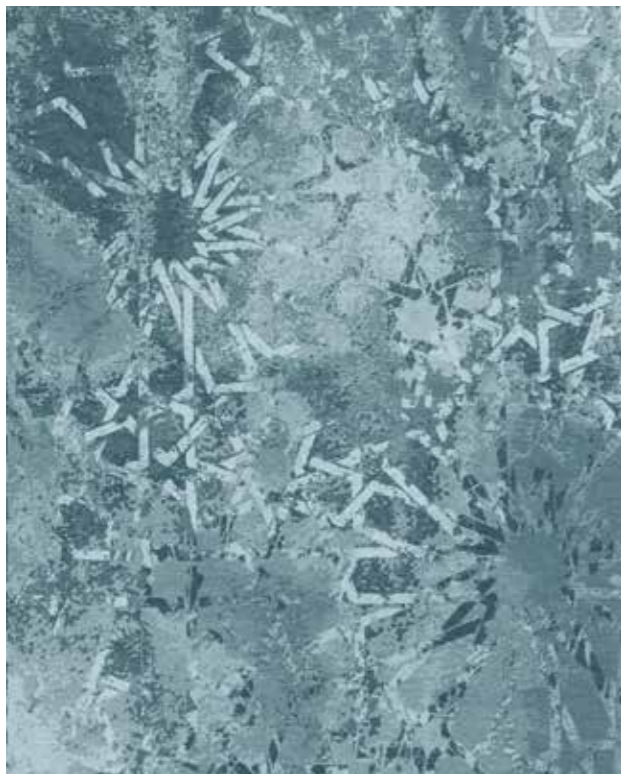
*-Ivan Goncharov, Oblomov*

Designed by Mansi Dhandhania

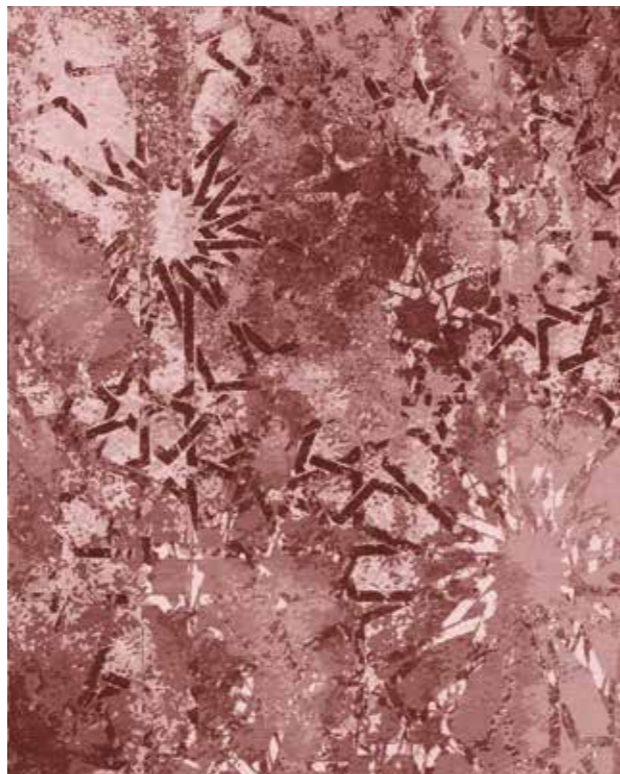


SOMERSET GOLD





ALLENHAM GREEN



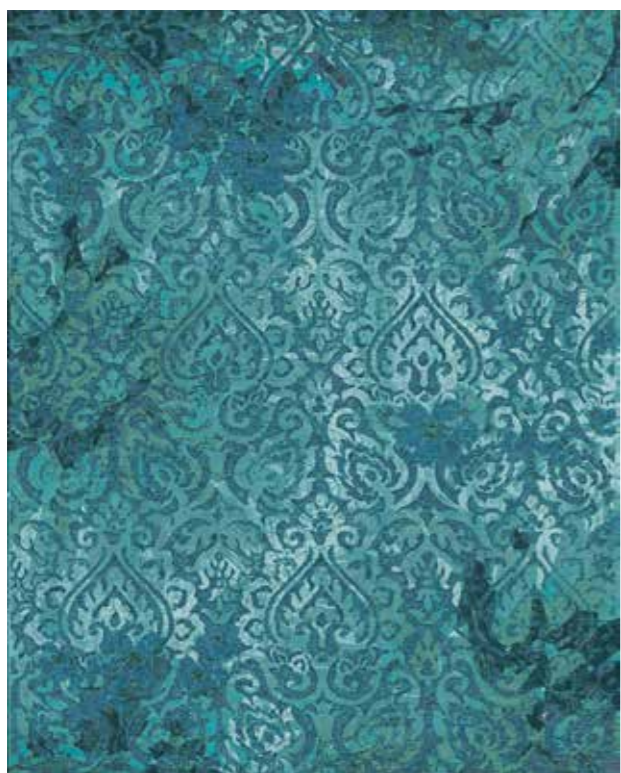
ALLENHAM PINK



NORLAND BLUE



NORLAND DARK GREY



NORLAND AQUA



DELAFORD LIGHT GREY



NORLAND BEIGE



NORLAND GREY



SUNEETA



BARSHA RED





SHARAD BLUE

## SUNEETA

Hand Knotted in Tibetan Wool and Bamboo Silk.

The Kathmandu valley has been blessed with breathtaking landscapes and terrain. To share this beauty with the world, the designer Suneeta Shrestha's collection for Sarawagi is made up of six timeless designs inspired by the six different seasons in the Kathmandu valley.

Designed by Suneeta Shrestha for Sarawagi.



HEMANTA GOLD





BARSHA DRIZZLE



BARSHA MONSOON



BARSHA RAIN



SHARAD GOLD



SHARAD BEIGE BLUE



SHARAD BLUE



BARSHA RED



SHISHIR PURPLE



SHISHIR RED



GRISHMA GREEN



GRISHMA BLACK N WHITE



HEMANTA BLUE



SHISHIR GREY



SHISHIR BLUE



SHARAD GREY



HEMANTA GOLD



BASANTA GREEN



BASANTA PURPLE



# SARAWAGI SCHOLARS







We believe that education is the most effective tool to drive social and economic progress in the community. With this belief, we launched the Sarawagi Scholars program- a scholarship that funds Primary and Secondary education of all of our weavers' children in a private English medium school in Kathmandu.

Since its inception in 2002, over 150 children have graduated from the program and 95 are currently enrolled.

Our relationship with our scholars does not end when they graduate from school. We work closely with our older scholars (Class 8-12) and conduct mentoring, leadership and career counselling workshops for them. We help educate them about the available scholarships for college, help them apply, and practice for interviews.

Our scholars have gone on to earn prestigious scholarships like the Mahatma Gandhi Scholarship, and have earned their place in competitive programs like Women Lead.







## CONTACT US

info@sarawagirugs.com  
www.sarawagirugs.com  
+977 1 4480 254 / 4480 531

## PHOTOGRAPHY

SHREYA SARAWAGI  
ASHISH MANN BAJRACHARYA  
MICHAEL CHRISTIE 'THE RUGGIST'  
PRABAL RATNA TULADHAR  
EMMA DE L'ECLUSE  
ASHLYNNE RAY  
SANU RAJA MAHARJAN

## GRAPHIC DESIGN

SHRINKHAL SARAWAGI  
ASHLYNNE RAY  
BIMALA BAJRACHARYA

## WEAVER MURAL

KIRAN MAHARJAN

## CONCEPT & COPY

SHALLY SARAWAGI

## CATALOG DESIGN

KAZI STUDIOS

## SPECIAL THANKS TO:

YUBARAJ SANGHRAULA  
NARESH PAREEKH  
RAM BAHADUR LAMA  
KRISHNA NEPAL  
DEEPAK GADTAULA  
JAGDISH KHAWAS  
BIMALA BAJRACHARYA  
MUSLIM ANSARI  
MADAN LAMA  
MAYA MAGAR  
SALIM ANSARI  
JAMSHEER ANSARI  
AFROZ ANSARI  
PASANG SHERPA



