



SEKİZLİ
MAKİNA & VİNC A.Ş.

HİDROLİK VİNC KATALOĞU

HYDRAULIC CRANE CATALOG



KURUMSAL

1987 Yılından bugüne kadar 500 kg kapasiteden 200 ton'a kadar çeşitli tiplerde kaldırma makinesi ve vinç üretimi ile faaliyetlerine 10.000 m2 kapalı alana sahip fabrikasında her geçen gün gelişerek ve tecrübe kazanarak devam etmektedir.

Firmamız, kurulduğu günden bugüne amaçladığı aşamaya, üretimde ve serviste seçkin kadrosunun takım ruhunu benimsemesi ile gösterdikleri üstün gayret ve çalışmalar sonucunda ulaşmıştır. Müşterilerimizin memnuniyetini sağlamak en büyük amacımızdır.

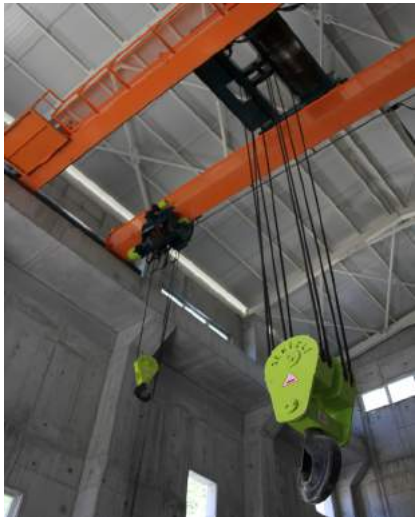
Gelişen Türkiye Sanayi'nin değişen ihtiyaçlarına cevap verebilecek nitelikte kaliteli ve güvenilir makina üretimini hedef alan şirketimiz, güçlü bir teknik kadroya ve son derece esnek imalat kapasitesine sahiptir.

CORPORATE

Our firm has been continued to its activities through developing and gaining experience every passing day from 500 kg capacity in 1987 to 200 tons capacity today with producing various types lifting machines and crane in 10.000 m2 indoor area.

Our firm has been reached to its aimed phase since its establishment date through adopting exclusive staff's team spirit at producing an d service and their presented extreme effort and works. Supplying customer satisfaction is our biggest aim.

Our company that aims producing quality and safe machine to meet changing needs of developing Turkey's industry has strong technical staff and extremely flexible manufacturing capacity.





KURUMSAL

1987 Yılından itibaren elektrikli vinç üretimi ile faaliyetlerini sürdüren firmamız, 2009 yılında araç üstü katlanır bomlu hidrolik vinç üretimine geçmiş olup bu alanda da günümüzde, sektöründe öncü firmalar arasında yer almaktadır. Firmamız, 2700 m2 kapalı alana sahip fabrikasında, 10 Ton-metreden 270 Ton-metreye kadar vinç üretimini gerçekleştirmektedir.

Misyonumuz

Globalleşen dünyaya ayak uydurmak, sektörde edindiği tecrübe ile daha çok insana istihdam sağlamak, ülkemiz ekonomisine katkıda bulunmaktır.

Vizyonumuz

Yaptığımız AR-GE çalışmaları ve teknoloji yatırımı ile müşterilerimizin taleplerine uluslararası standartların üstünde cevap vermektir.

CORPORATE

Our Company which is continuing on production electrical cranes since 1987, attended to produce folding boom hydraulic cranes in 2009; nowadays it takes place among the leading companies in this sector. Our company that has 2700 meter square closed factory area, produces hydraulic cranes which is beginning 10 metric ton up to 270 metric ton.

Our Mission

To keep pace to the global world, with the obtained experience from this sector to provide employment and to contribute to the local country economy.

Our Vision

With the done research and developments and technology investment, to respond to the demands of our clients on international standards.

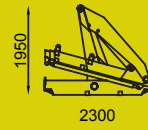
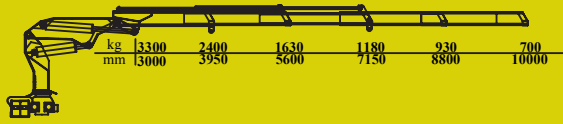
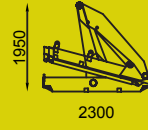
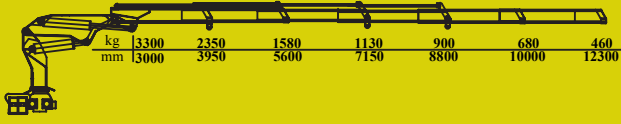
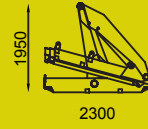
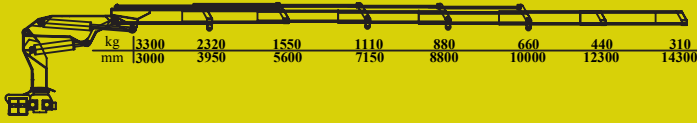
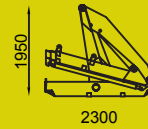
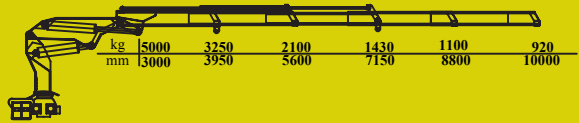
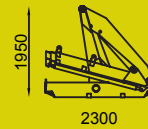
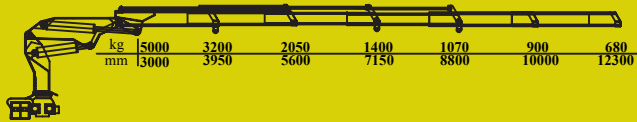
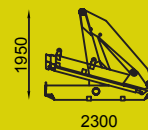
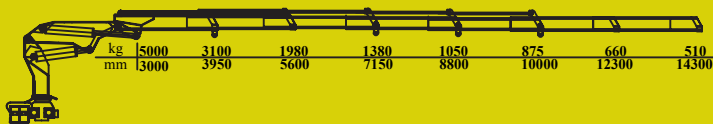
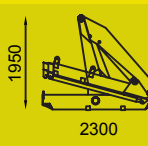
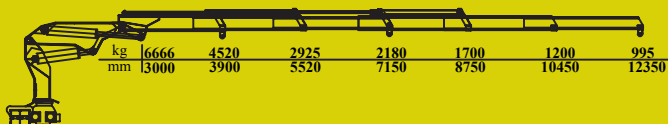
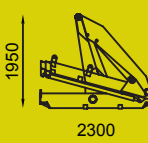
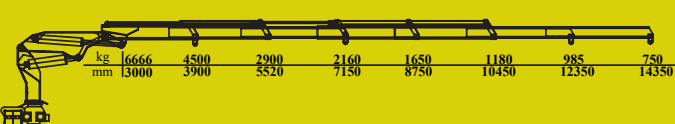
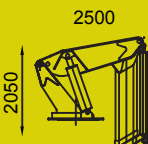
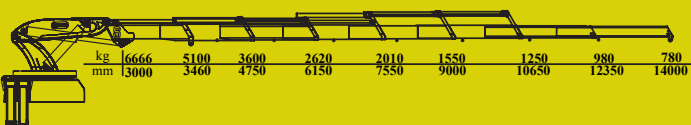
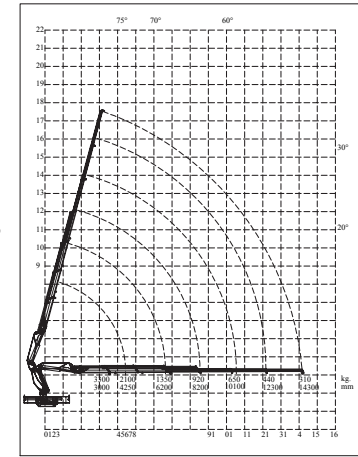
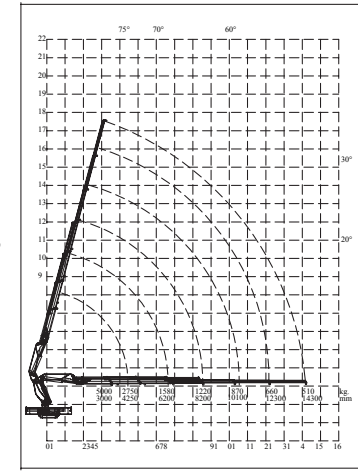
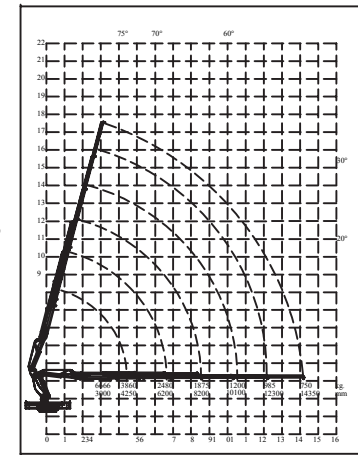


ÜRÜN GRUBU

PRODUCT GROUP

SV 10 - SV 15 - SV 20



SV 10 TK 2**SV 10 TK 3****SV 10 TK 4****SV 15 TK 2****SV 15 TK 3****SV 15 TK 4****SV 20 TK 3****SV 20 TK 4****SV 20 TK 5****Kaldırma Momenti****10 Tonm****Lifting Moment****Dönüş Açısı****360°****Slewing Angle****Çalışma Basıncı****250 Bar****Working Pressure****SV 10 TK 4 AÇILI DIAGRAM****Kaldırma Momenti****15 Tonm****Lifting Moment****Dönüş Açısı****360°****Slewing Angle****Çalışma Basıncı****250 Bar****Working Pressure****SV 15 TK 4 AÇILI DIAGRAM****Kaldırma Momenti****20 Tonm****Lifting Moment****Dönüş Açısı****360°****Slewing Angle****Çalışma Basıncı****250 Bar****Working Pressure****SV 20 TK 4 AÇILI DIAGRAM**



Araç Üstü Katlanır Bomlu Hidrolik Vinç Truck Mounted Knuckle Boom Crane

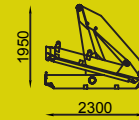
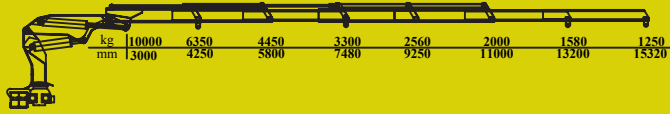
- | | | | | | | | | | |
|----------|----------------|----------|-----------|----------|------------|---------------|---------------|---------------|-----------------|
| Standart | Standart | Standart | Standart | Standart | Standart | Opsiyonel | Opsiyonel | Opsiyonel | Opsiyonel |
| | | | | | | | | | |
| Dönüş | Yağ Soğutucusu | Koltuk | Yağ Tankı | Kanca | Yük Sepeti | İlave Kumanda | Halat Tamburu | İlave Mekanik | Uzaktan Kumanda |



ÜRÜN GRUBU
PRODUCT GROUP
SV 30 - SV 40 - SV 50



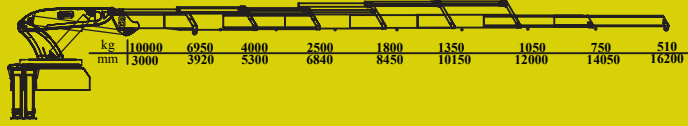
SV 30 TK 4



2300

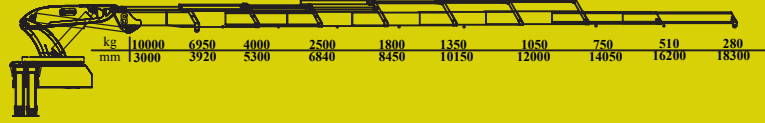
2500

SV 30 YK 5

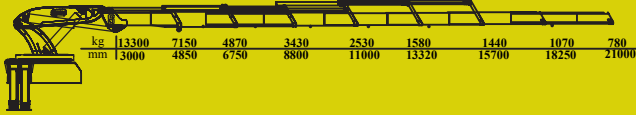


2500

SV 30 YK 6



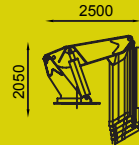
SV 40 LONG 5



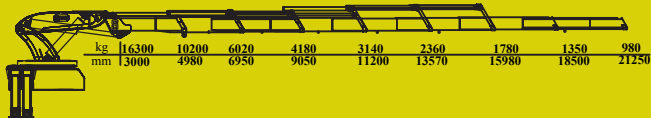
SV 40 LONG 6



SV 40 YK 6



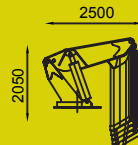
SV 50 LONG 5



SV 50 LONG 6

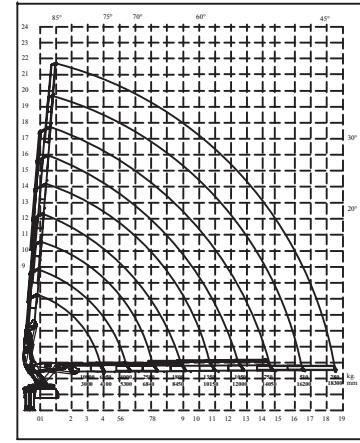


SV 50 YK 6



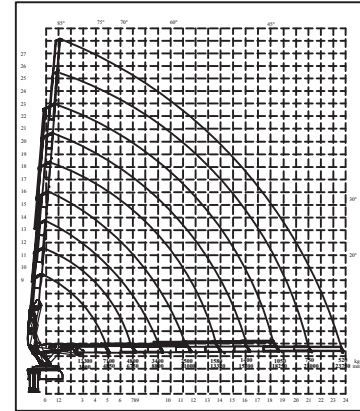
Kaldırma Momenti	30 Ton/ mt
Lifting Moment	
Dönüş Açısı	360°
Slewing Angle	
Çalışma Basıncı	250 Bar
Working Pressure	

SV 30 YK 6 AÇILI DIĞRAM



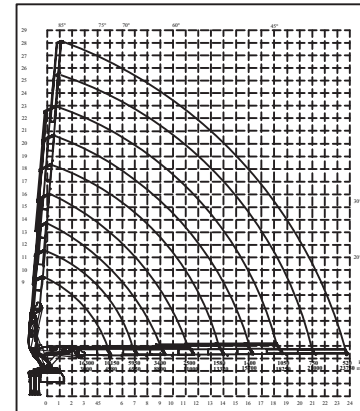
Kaldırma Momenti	40 Tonm
Lifting Moment	
Dönüş Açısı	360°
Slewing Angle	
Çalışma Basıncı	250 Bar
Working Pressure	

SV 40 L 6 AÇILI DIĞRAM



Kaldırma Momenti	50 Tonm
Lifting Moment	
Dönüş Açısı	360°
Slewing Angle	
Çalışma Basıncı	250 Bar
Working Pressure	

SV 50 L6 AÇILI DIĞRAM





Araç Üstü Katlanır Bomlu Hidrolik Vinç
Truck Mounted Knuckle Boom Crane

- | | | | | | | | | | |
|----------|----------------|----------|-----------|----------|------------|---------------|---------------|---------------|-----------------|
| Standart | Standart | Standart | Standart | Standart | Standart | Opsiyonel | Opsiyonel | Opsiyonel | Opsiyonel |
| | | | | | | | | | |
| Dönüş | Yağ Soğutucusu | Koltuk | Yağ Tankı | Kanca | Yük Sepeti | İlave Kumanda | Halat Tamburu | İlave Mekanik | Uzaktan Kumanda |



ÜRÜN GRUBU
PRODUCT GROUP
SV 60 - SV 75



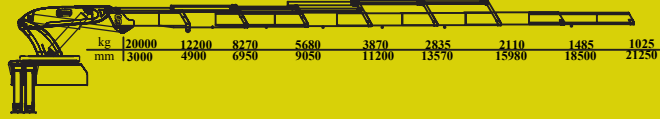
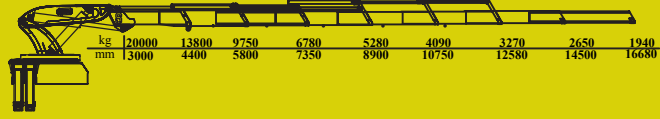
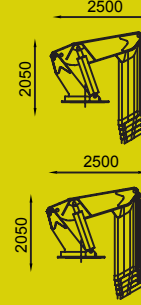
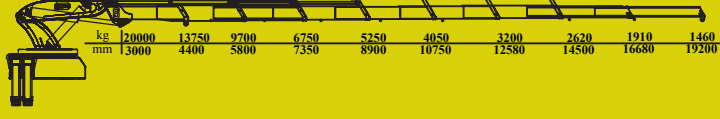
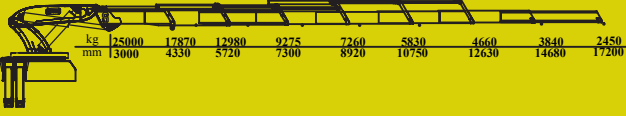
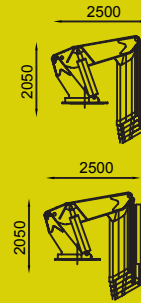
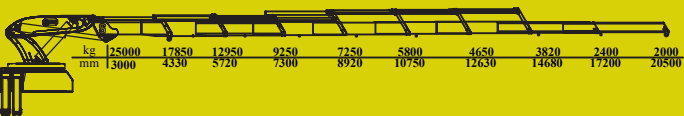
SEKİZLİ MAKİNA

SEKİZLİ

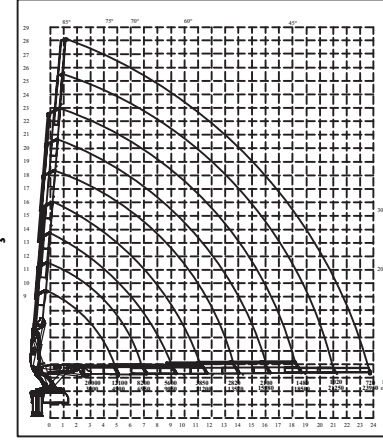
SEKİZLİ

UYARI

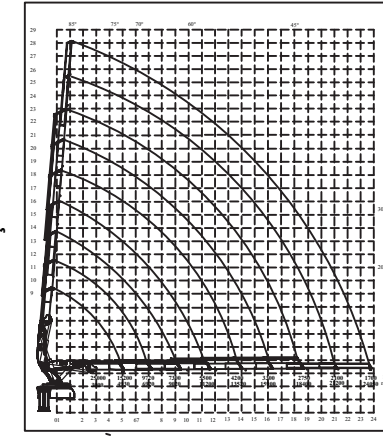


SV 60 LONG 5**SV 60 LONG 6****SV 60 YK 5****SV 60 YK 6****SV 75 LONG 5****SV 75 LONG 6****SV 75 YK 5****SV 75 YK 6**

Kaldırma Momenti	60 Tonm
Lifting Moment	
Dönüş Açısı	360°
Slewing Angle	
Çalışma Basıncı	250 Bar
Working Pressure	

SV 60 L6 AÇILI DİYAGRAM

Kaldırma Momenti	75 Tonm
Lifting Moment	
Dönüş Açısı	360°
Slewing Angle	
Çalışma Basıncı	250 Bar
Working Pressure	

SV 75 L6 AÇILI DİYAGRAM



Araç Üstü Katlanır Bomlu Hidrolik Vinç Truck Mounted Knuckle Boom Crane

- | | | | | | | | | | |
|----------|----------------|----------|-----------|----------|------------|---------------|---------------|---------------|-----------------|
| Standart | Standart | Standart | Standart | Standart | Standart | Opsiyonel | Opsiyonel | Opsiyonel | Opsiyonel |
| | | | | | | | | | |
| Dönüş | Yağ Soğutucusu | Koltuk | Yağ Tankı | Kanca | Yük Sepeti | İlave Kumanda | Halat Tamburu | İlave Mekanik | Uzaktan Kumanda |



ÜRÜN GRUBU
PRODUCT GROUP
SV 90



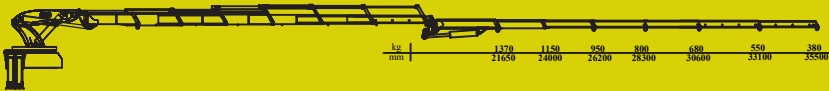
SV 90 LONG 5



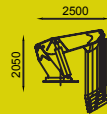
SV 90 LONG 6



SV 90 LONG 6 + 4



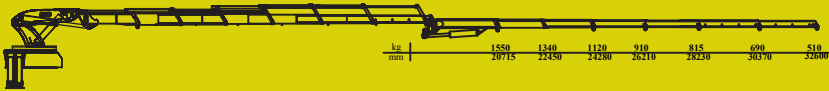
SV 90 YKL 5



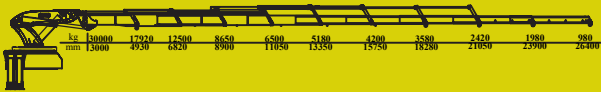
SV 90 YKL 6



SV 90 YKL 6 + 4

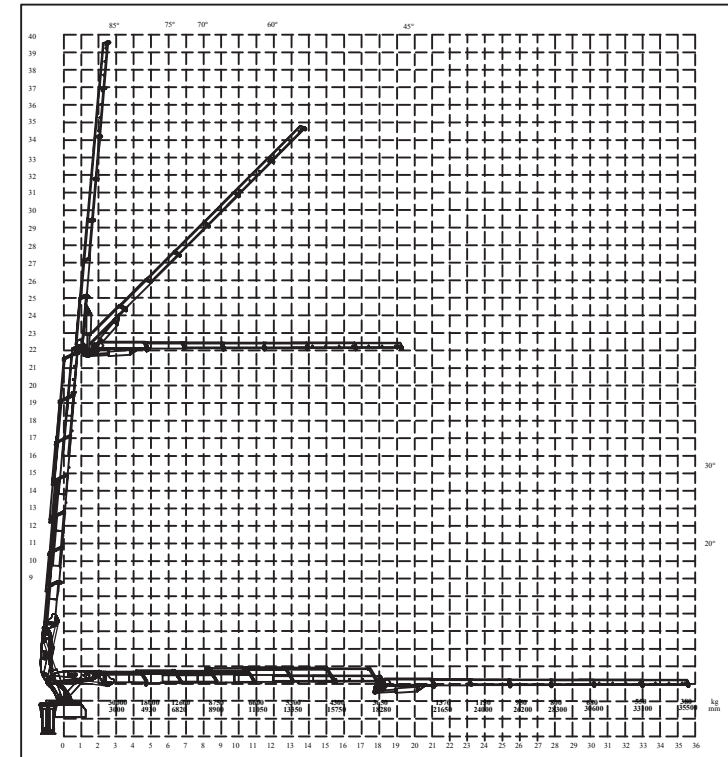


SV 90 LONG 7




Kaldırma Momenti	90 Tonm
Lifting Moment	
Dönüş Açısı	360°
Slewing Angle	
Çalışma Basıncı	250 Bar
Working Pressure	

SV 90 L6+L4 AÇILI DİYAGRAM





Araç Üstü Katlanır Bomlu Hidrolik Vinç
Truck Mounted Knuckle Boom Crane

- | | | | | | | | | | |
|---|--|---|---|---|---|---|---|---|---|
| Standart | Standart | Standart | Standart | Standart | Standart | Opsiyonel | Opsiyonel | Opsiyonel | Opsiyonel |
|  |  |  |  |  |  |  |  |  |  |
| Dönüş | Yağ Soğutucusu | Koltuk | Yağ Tankı | Kanca | Yük Sepeti | İlave Kumanda | Halat Tamburu | İlave Mekanik | Uzaktan Kumanda |



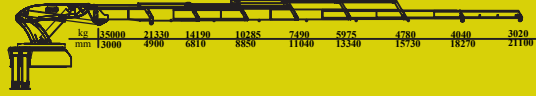
ÜRÜN GRUBU
PRODUCT GROUP
SV 105



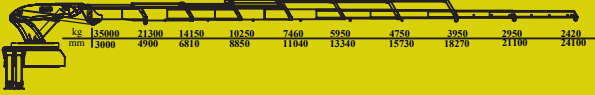
S

51 KK 653

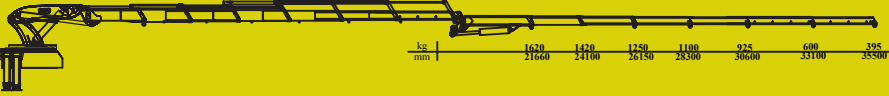
SV 105 LONG 5



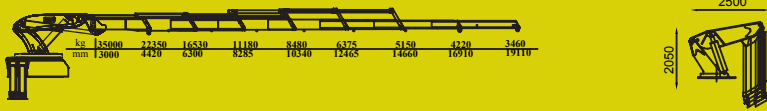
SV 105 LONG 6



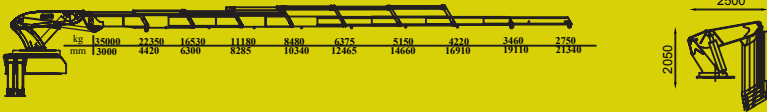
SV 105 LONG 6 + 4



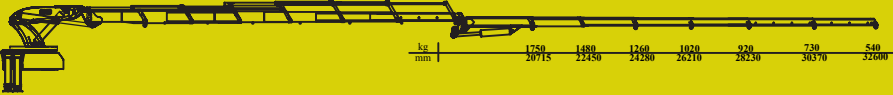
SV 105 YKL 5



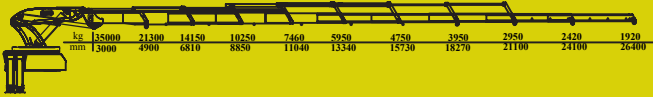
SV 105 YKL 6



SV 105 YKL 6 + 4

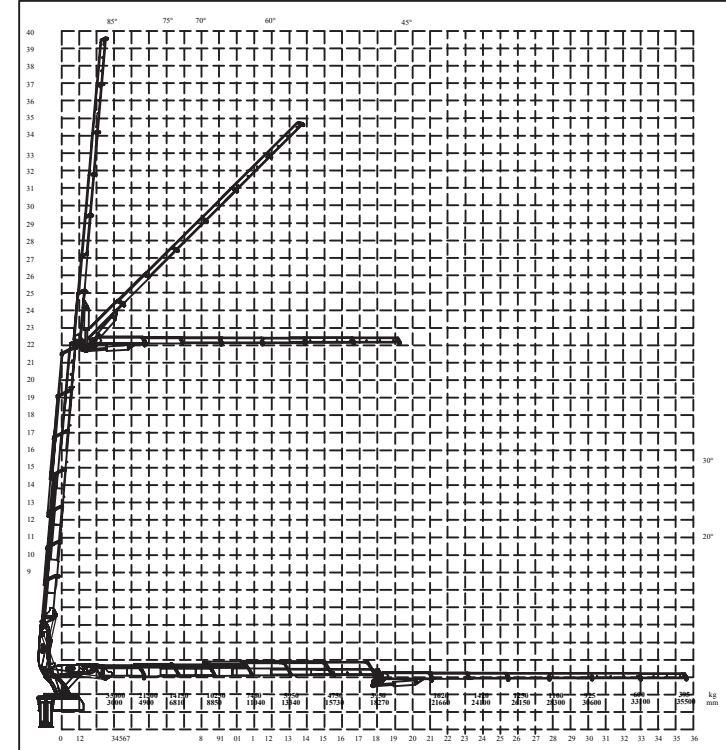


SV 105 LONG 7



Kaldırma Momenti	105 Tonm
Lifting Moment	
Dönüş Açısı	360°
Slewing Angle	
Çalışma Basıncı	250 Bar
Working Pressure	

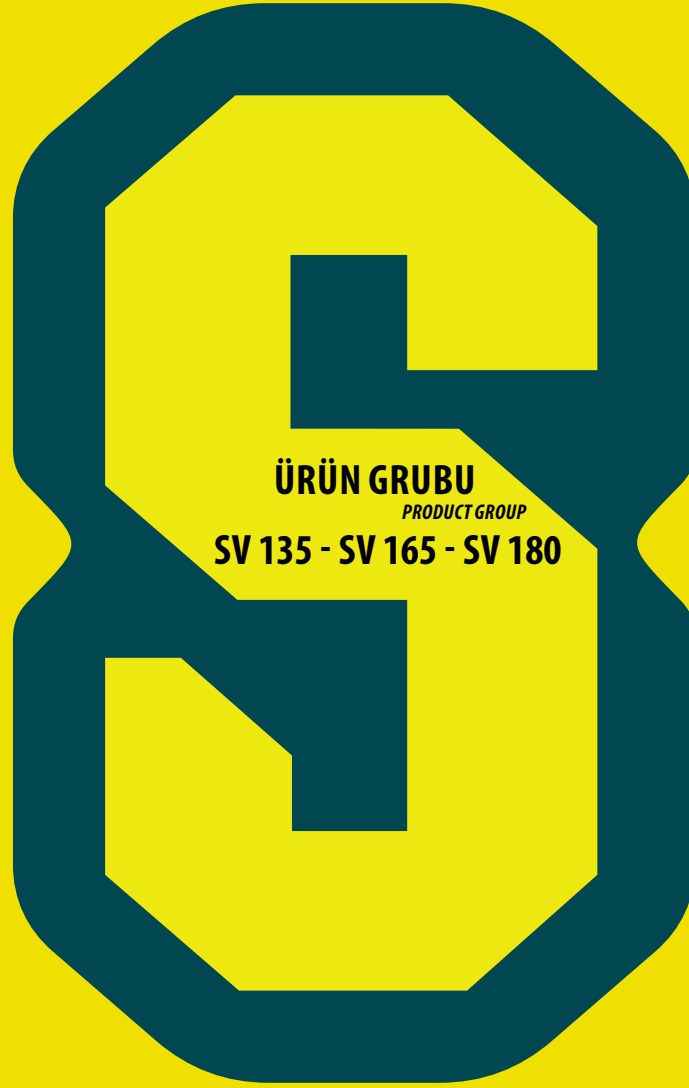
SV 105 L6+L4 AÇILI DİYAGRAM





Araç Üstü Katlanır Bomlu Hidrolik Vinç Truck Mounted Knuckle Boom Crane

- | | | | | | | | | | |
|----------|----------------|----------|-----------|----------|------------|---------------|---------------|---------------|-----------------|
| Standart | Standart | Standart | Standart | Standart | Standart | Opsiyonel | Opsiyonel | Opsiyonel | Opsiyonel |
| | | | | | | | | | |
| Dönüş | Yağ Soğutucusu | Koltuk | Yağ Tankı | Kanca | Yük Sepeti | İlave Kumanda | Halat Tamburu | İlave Mekanik | Uzaktan Kumanda |



ÜRÜN GRUBU
PRODUCT GROUP
SV 135 - SV 165 - SV 180



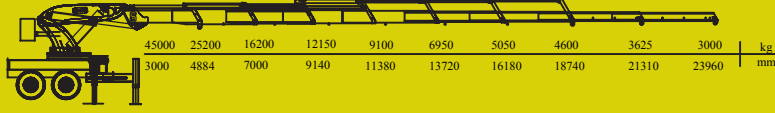
SEKİZLİ MAKİNA

SEKİZLİ
MAKİNA & VİNCİ A.Ş.

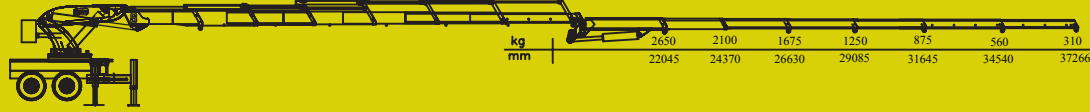
SV 135 LONG 5



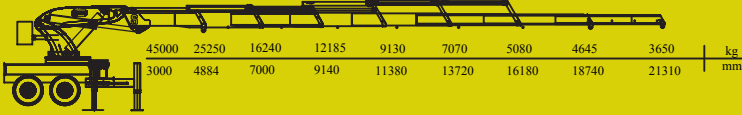
SV 135 LONG 6



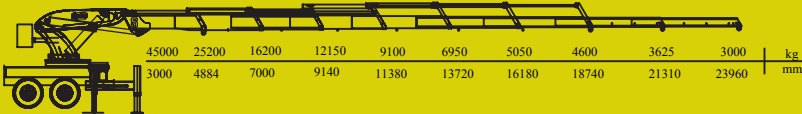
SV 135 LONG 6 + 4



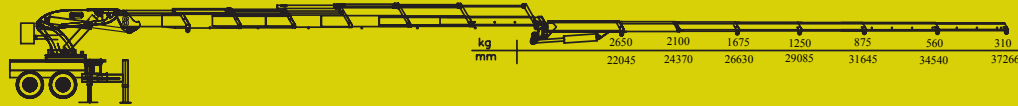
SV 165 LONG 5



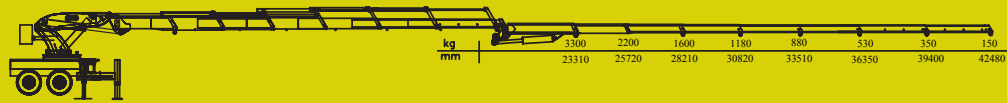
SV 165 LONG 6



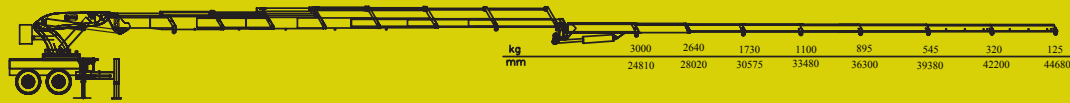
SV 165 LONG 6 + 4



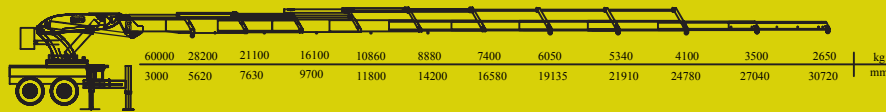
SV 180 LONG 6 + 5



SV 180 LONG 7 + 5



SV 180 LONG 8



Kaldırma Momenti

135
Tonm

Lifting Moment

Dönüş Açısı

360°

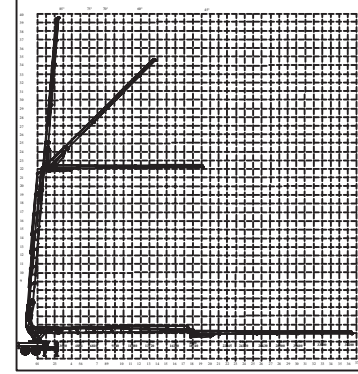
Slewing Angle

Çalışma Basıncı

250 Bar

Working Pressure

SV 135 L6+L4 AÇILI DİYAGRAM



Kaldırma Momenti

165
Tonm

Lifting Moment

Dönüş Açısı

360°

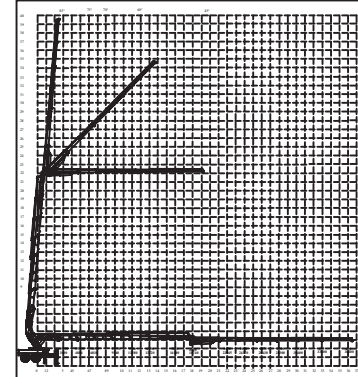
Slewing Angle

Çalışma Basıncı

250 Bar

Working Pressure

SV 165 L6+L4 AÇILI DİYAGRAM



Kaldırma Momenti

180
Tonm

Lifting Moment

Dönüş Açısı

360°

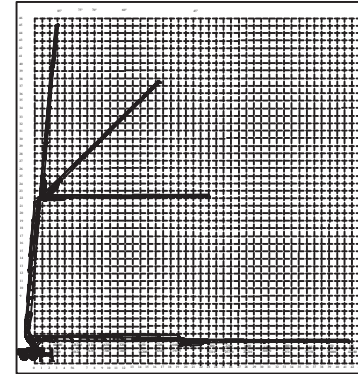
Slewing Angle

Çalışma Basıncı

250 Bar

Working Pressure

SV 180 L6+L5 AÇILI DİYAGRAM





Araç Üstü Katlanır Bomlu Hidrolik Vinç Truck Mounted Knuckle Boom Crane

- | | | | | | | | | | |
|----------|----------------|----------|-----------|----------|------------|---------------|---------------|---------------|-----------------|
| Standart | Standart | Standart | Standart | Standart | Standart | Opsiyonel | Opsiyonel | Opsiyonel | Opsiyonel |
| | | | | | | | | | |
| Dönüş | Yağ Soğutucusu | Koltuk | Yağ Tankı | Kanca | Yük Sepeti | İlave Kumanda | Halat Tamburu | İlave Mekanik | Uzaktan Kumanda |







S SEKİZLİ

MAKİNA & VİNÇ A.Ş.

www.sekizli.com.tr



 **444 7595**
SKZL

 **444 5993**