



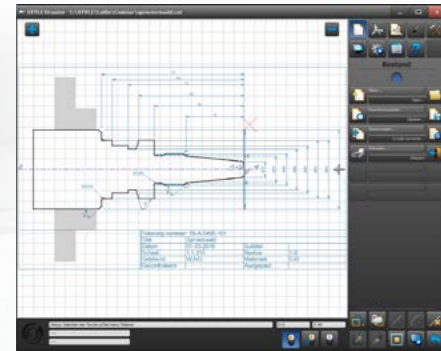
## STYLE lathe

The best lathe for small series

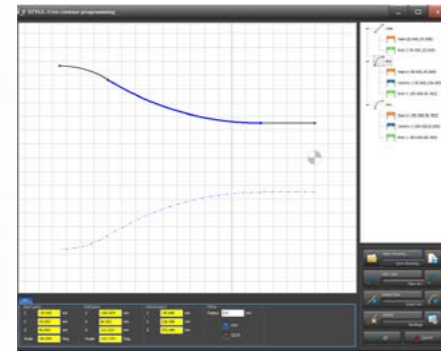
Machinebuilders since 1991

# STYLE lathe

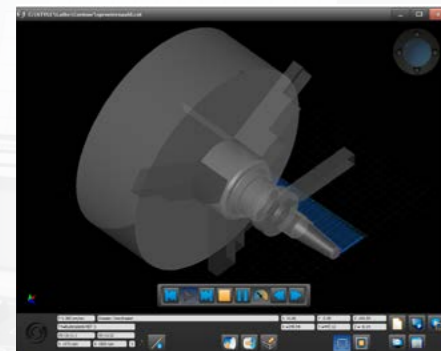
## The best lathe for small series



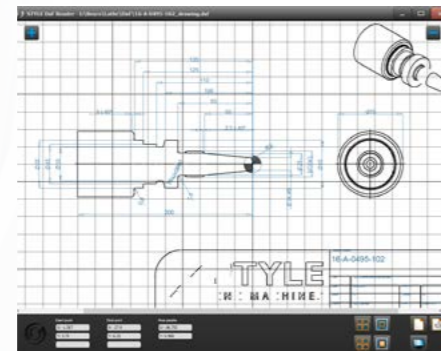
Easy and fast programming



Free contour drawing with a minimum of values



3D simulation for testing and time calculation



DxF import from CAD software



STYLE 350



STYLE 410



STYLE 750



STYLE 1200

### Easy, smart and simple programming

- Extensive CNC functionality
- 3D simulation program
- Graphic interface on 19" touchscreen
- DxF files import
- Free contour drawing with a minimum of values
- ISO G-codes import, edit and execute
- Easy to learn and use

- Shortcuts and key codes for faster working
- Execute of large G-code programs
- Program with an extensive intuitive control without any G-code knowledge
- Thread repair and prototyping
- Desktop prep version

### The best lathe for small series

- For single pieces and small series
- Easy and intuitive control
- Modern and ergonomic design
- 6 models with diameters from 350 mm up to 1200 mm
- Distance between centers 850 mm up to 5000 mm
- Double prism and accurate guides

- Stable castiron frame
- Fully enclosed machine, CE approved
- Optimal accessibility and operational ease
- Complete Dutch design and development
- Produced and controlled from Holland
- Several options possible

Machinebuilders since 1991



# STYLE 350-1200 serie

## Technical specifications

Machine		STYLE 350	STYLE 510	STYLE 650	STYLE 750	STYLE 1000	STYLE 1200
Swing over bed	mm	380	510	650	750	1000	1200
Swing over support	mm	190	300	430	530	710	910
Distance between centers	mm	850	1350 / 1850 <sup>1</sup>	900 / 1900 / 2900 / 3900		2200 / 3200 / 4000 / 5000	
Bed width	mm	305	330	450	450	560	
Maximum weight between centers	kg	300	600 / 750 <sup>1</sup>	1500	1500 / 2000 <sup>2</sup>	3200 / 3500 <sup>2</sup>	
<b>Main spindle</b>							
Main motor power (S6)	kW	5.5 / 7.5	7.5 / 11	23 / 27.5 / 35	23 / 27.5 / 35	27.5 / 35	
Spindle bore	ø mm	54	80 / 102	105	105 / 155 / 180 / 230	155 / 250 / 305	
Max main spindle torque (S6) with gearbox	Nm	373 / 509	718 / 1050 (80) 1180 (102)	3450 / 4140 / 7900 (105)	4090 / 4870 / 9290 (155) 5875 / 11217(180/230)	22725 / 43385 (155) 43730 / 83490 (250/305)	
Max spindle speed	rpm	3000 / 4000	2500 (80) / 2100 (102)	2000 (105) 1500 (155)	1250 (180) 1000 (230)	600 (250/305) / 800 (155)	
Spindle taper		D1-6	D1-8	D1-11	D1-11 / A2-11 / A2-15	A2-11 / A2-15 / A2-20	
<b>X- and Z-axis</b>							
Ball screw spindle ø X-axis	mm	25	25	32	32	40	40
Ball screw spindle ø Z-axis	mm	40	40	50	50 / 63	63	63
Rapid movement	m/min	8	8	8	8	8	8
Feed rate	mm/min	0.01 - 2000	0.01 - 2000	0.01 - 2000	0.01 - 2000	0.01 - 2000	0.01 - 2000
<b>Tail stock</b>							
Quill	ø mm	54	75 / 80 <sup>2</sup>	105	105 / 125 <sup>2</sup>	125 / 165 <sup>2</sup>	125 / 165 <sup>2</sup>
Quill stroke	mm	100	150	225	225	275	275
Quill taper	MT	4	5	5	5 / 6	6	6
<b>General</b>							
Weight	kg	2000	2700 / 3250	4700 / 5700 / 6800 / 7900		6800 / 8200 / 9000 / 10000	
Machine dimensions (l/w/h)	m	2.5 × 1.8 × 1.8	3.2 × 1.8 × 1.8 (1350) 3.7 × 1.8 × 1.8 (1850)	3.1 × 2.3 × 2.2 (900) 4.1 × 2.3 × 2.2 (1900) 5.1 × 2.3 × 2.2 (2900) 6.1 × 2.3 × 2.2 (3900)		4.5 × 2.8 × 2.4 (2200) 5.5 × 2.8 × 2.4 (3200) 6.3 × 2.8 × 2.4 (4000) 7.3 × 2.8 × 2.4 (5000)	
<b>Options</b>							
Automatic gear change		-	-	standard	standard	standard	standard
Automatic chip conveyor		option	option	standard	standard	standard <sup>3</sup>	standard <sup>3</sup>
Automatic tool changer		option	option	option	option	option	option
Spindle indexing		-	-	option	option	option	option
Automatic tool changer with driven tools		-	-	option	option	option <sup>4</sup>	option <sup>4</sup>
Steady rest (3 points)	ø mm	10-150	20-150 / 10-300	50-300 / 60-400	50-300 / 60-400	50-380 / 380-650 / 650-800 (1200)	
Steady rest (2 points)	ø mm	-	-	-	380-500	470-700	470-700

<sup>1</sup> With heavy tail stock dbc is 1200/1700 <sup>2</sup> Possible with heavy duty tail stock

<sup>3</sup> Two standard chip conveyors <sup>4</sup> Automatic changer at front of X-support



### STYLE CNC Machines NL

Nijverheidsweg 15  
3751 LP Bunschoten, The Netherlands  
info@stylecncmachines.com  
+31 (0)33 - 20 525 00



### STYLE CNC Machines CZ

Stanovice 37  
544 01 Dvůr Králové nad Labem, Czech Republic  
info@stylecncmachines.cz  
+420 499 421 713



### STYLE CNC Machines PL

ul. Zuzanny 34  
41-219 Sosnowiec, Poland  
info@stylecncmachines.pl  
+48 883 444 723



### STYLE CNC Machines BE

Vlierstraat 5  
B-8790 Waregem, Belgium  
info@stylecncmachines.be  
+32 497 322 109

Correspondence  
PO box 136  
3750 GC Bunschoten  
Holland

Production and showroom  
Nijverheidsweg 15  
3751 LP Bunschoten  
Holland

T +31 33 - 205 25 00  
E info@stylecncmachines.com  
I www.stylecncmachines.com