

SUTCO® SORTING AND TREATMENT PLANTS .

TREATMENT PLANTS FOR REFUSE DERIVED FUEL (RDF/SRF)

**ALL FROM ONE HAND -
FROM CONCEPT TO THE COMMISSIONING.**



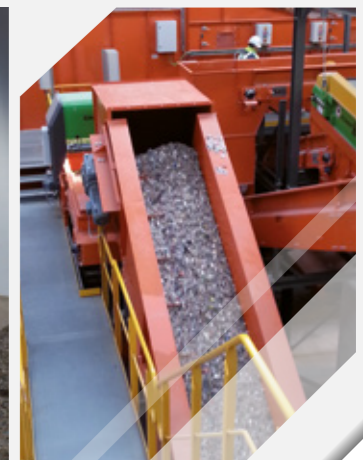
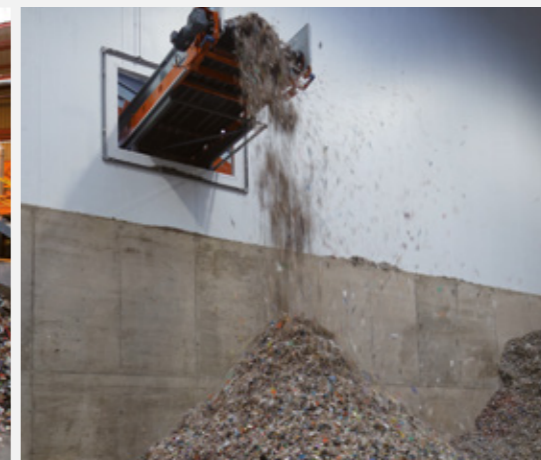
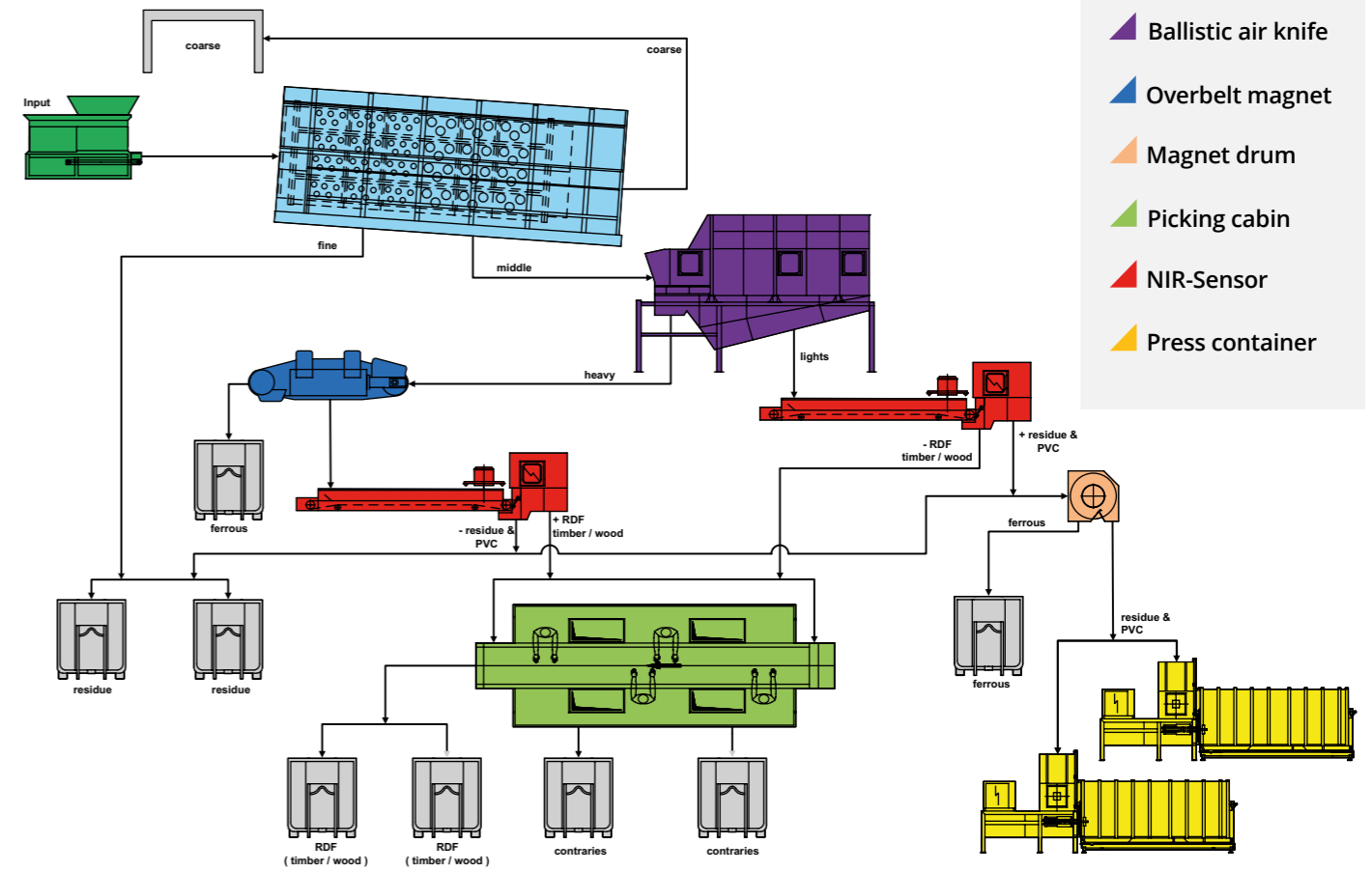
SUBSTITUTE FUELS

Generally, industrial waste and bulky waste are mainly comprised of plastics, paper, textile, wood, minerals and combipacks. All these materials have high calorific value. Using advanced treatment technology, a fuel (so-called co-incineration) is produced for the cement, lime and power station industry or even as a sole fuel in RDF (substitute fuel) power plants. Having been pre-crushed, the material is screened, then separated by the wind shifter and followed by a separation of ferrous and non-ferrous metals with a subsequent NIR separation (near infrared separation).

The material may be post-crushed again. Frequently, the material is pelletized until use or filled in containers or stored in bunkers. Also, the highly calorific fractions produced in mechanical-biological treatment plants (MBT) are used as RDF. Sutco RecyclingTechnik attaches much importance to the exacting requirements for the material composition in the form of absence of metals, water and harmful substances (e.g. low chlorine content, sorting out PVC parts) according to the EU directives. This technology provides an alternative energy resource to the traditional energy carriers.



EXAMPLE: TREATMENT SYSTEM FOR REFUSE DERIVED FUEL INPUT: 20 Mg/h



REFUSE DERIVED FUEL (RDF)

Substitute fuel or secondary fuel is fuel which normally consists of waste with a high calorific value. The waste used for the production of substitute fuel may come from households, industry or trade.

SOME REFERENCES

PRODUCTION OF REFUSE DERIVED FUEL

RDF - PLANT HELSINKI

Side	Helsinki, Finland
Plant	Sorting system for industrial waste and mixed construction waste for RDF
Throughput	30 Mg/h Mixed construction waste
Customer	Lassila Tikanoja, Finland

RDF - PLANT MESCHEDE

Side	Meschede, Germany
Plant	Production of substitute fuel from production waste
Throughput	30 Mg/h
Customer	Remondis, Lünen, Germany

COMMERCIAL WASTE TREATMENT PLANT NORTHAMPTON

Side	Northampton, United Kingdom
Plant	Production of RDF/SRF
Throughput	25 Mg/h
Customer	HW Martin, United Kingdom



RDF - PLANT RUGBY

Side	Rugby, United Kingdom
Plant	Sorting system for industrial waste for RDF
Throughput	220,000 Mg/a Industrial waste
Customer	Sita UK, United Kingdom

RDF - PLANT BIRMINGHAM

Side	Birmingham, United Kingdom
Plant	Automatic treatment plant of industrial waste producing refuse derived fuel - RDF/SRF
Throughput	62,000 Mg/a
Customer	Sita UK, United Kingdom

