



TAJFUN LIV®

HYDRAULIC TIMBER CRANES

TAJFUN LIV

HYDRAULIC TIMBER CRANES TAJFUN LIV

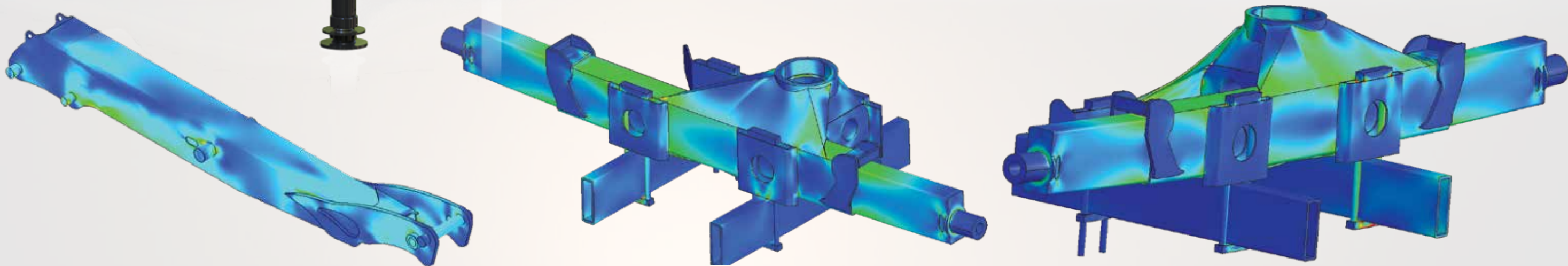
MY INNER
STRENX™

TOP-QUALITY SSAB STEEL FOR SAFETY AND EXCEPTIONAL STRENGTH

The Tajfun Liv hydraulic cranes are made of STRENX® steel, which provides strength and durability, and reduces the total weight.

OVERCOMES THE HEAVIEST LOADS

We perform stress analysis using the finite element method (dynamic FEM) and analysis of the kinematics of the structure based on 3d models. In this way, we can eliminate most of the structure's critical points in the design phase.



DYNAMIC FEM OF TORSION

The column is welded to the base with butt weld, brushed and checked with ultrasound. This type of weld is of the highest quality and enables the column to react as if it was one piece. This modern construction is slim, though not under-dimensional, and enables better crane resistance to dynamic load. With FEM (Finite Element Method), the majority of critical points on the column are eliminated in the design stage.

The steel casting of the lower part of the column ensures a high level of strength and a long service life. In combination with the double slewing system, which is immersed in an oil bath, it enables safe and comfortable work on even the most demanding and sloping terrains.



The precise and high-quality welding of hydraulic booms and other parts of the crane using state-of-the-art equipment (Yaskawa).



First-class grapple processing at the DBD two-spindle multi-processing centre




Bio-oil for the respectful treatment of nature and the environment!


State-of-the-art surface protection and painting technology ensures resistance to mechanical, chemical and weather influences, while at the same time retaining the visual appeal:

1. Chemical pre-treatment
2. Electrostatic varnishing - application of ceramic primer
3. Polymerization of primer
4. Electrostatic coating - application of two coats of coating paint (a wide selection)
5. Polymerization of the coating paint
6. Excellent corrosion protection (durability up to 1000 h in a salt chamber)
7. Oil bath







Power link on 2nd cylinder increases the power of the crane in the extended position.



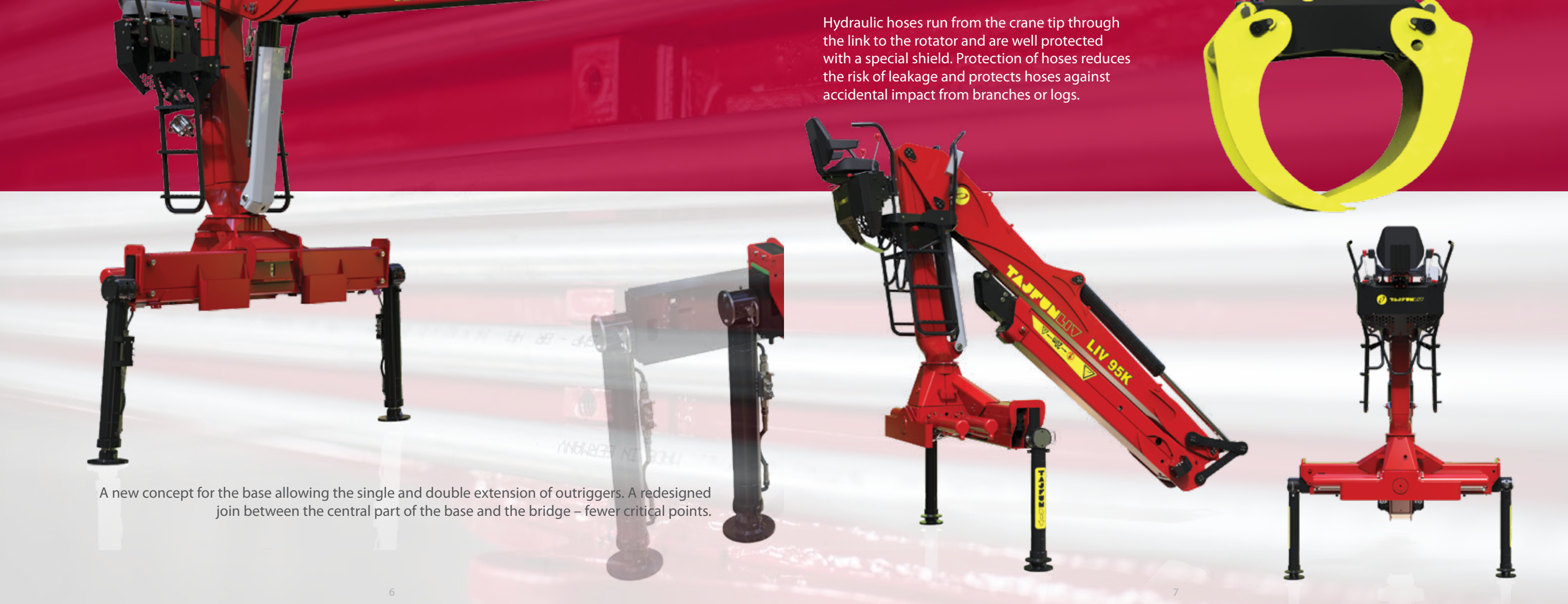
Spot lights on outer boom



The hydraulic pipes and hoses are internally routed and well protected within the second boom system with all the cranes from 10 kNm / 7375 ft.lbs up.



Hydraulic hoses run from the crane tip through the link to the rotator and are well protected with a special shield. Protection of hoses reduces the risk of leakage and protects hoses against accidental impact from branches or logs.



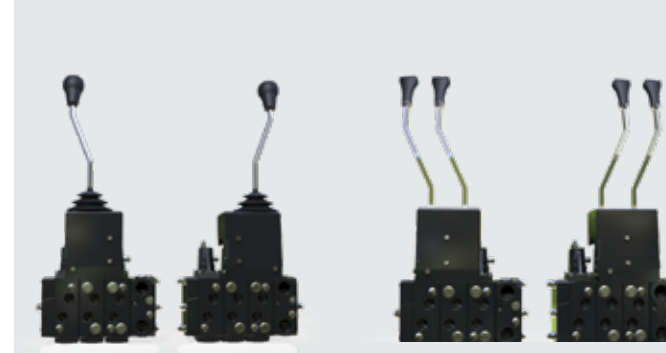
A new concept for the base allowing the single and double extension of outriggers. A redesigned joint between the central part of the base and the bridge – fewer critical points.



PBC safety box with hour counter enables easier maintenance

Control panel with "STOP" switch

Control



Mechanical control with two cross levers or four linear levers and two pedals (Danfoss)



Electro-proportional control with the Scanreco remote control



Overcentre valves and rated moment limiter



Electro-proportional control with ergonomically designed Danfoss joysticks that are perfectly sealed and weather resistant. Using the interface, users can adjust the settings

of individual crane functions. There are three personalized settings available.

The precise control of outriggers is enabled by Danfoss electro-hydraulic valves. The outriggers can also be operated with the new control console on the seat.



Control system on the base ensures easy maintenance.



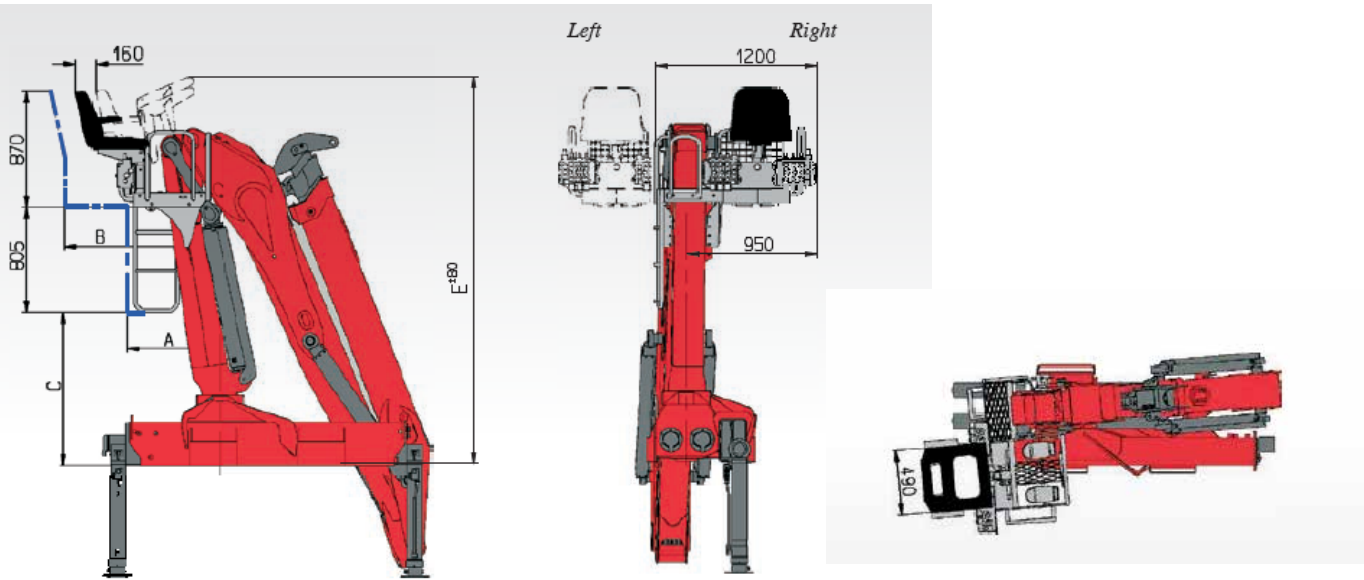
The spacious and comfortable cabin provides superior visibility (option)



The comfortable top-seat with armrests allows the user to operate transparently and safely.

Top-seat "SS"

Side mounted (left or right of the column) seat (optional)



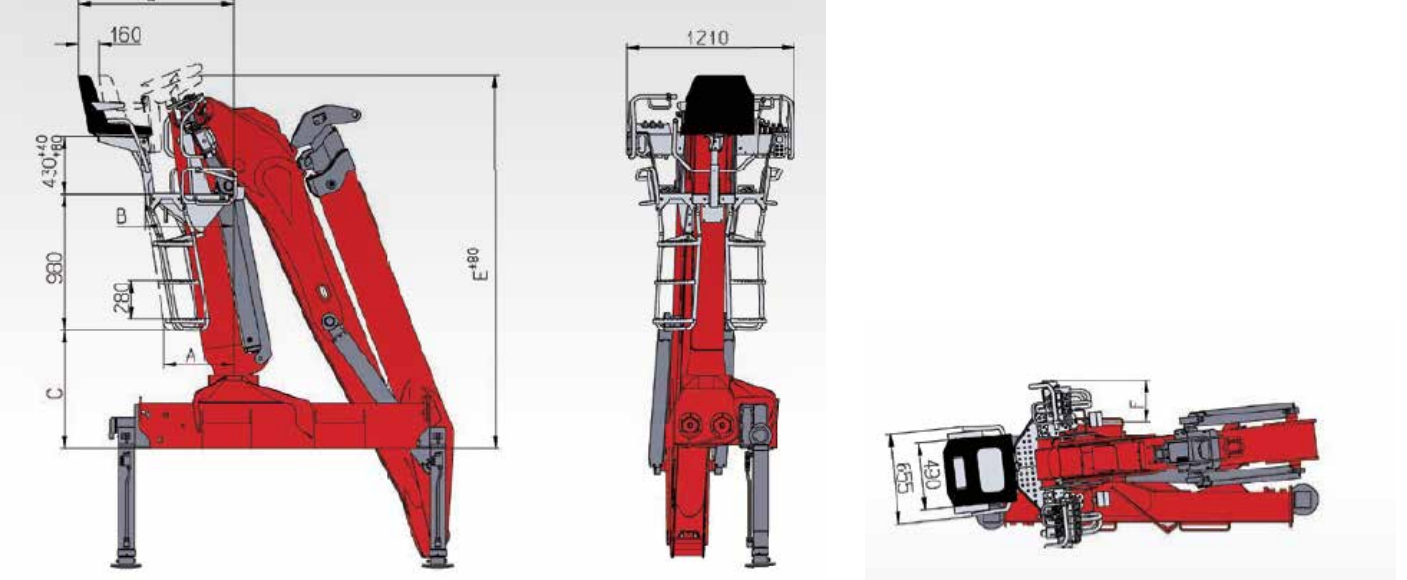
	A	B	C	E
LIV 100K	605 mm 2 ft	1050 mm 3.5 ft	1030 mm 3.4 ft	2720 mm 8.9 ft
LIV 120K	665 mm 2.2 ft	1140 mm 3.8 ft	1130 mm 3.7 ft	2820 mm 9.2 ft
LIV 130K - LIV 150K	605 mm 2 ft	1050 mm 3.5 ft	1030 mm 3.4 ft	2720 mm 8.9 ft
LIV 170K	610 mm 2.1 ft	1055 mm 3.5 ft	1030 mm 3.4 ft	2720 mm 8.9 ft
LIV 270K	605 mm 2 ft	1060 mm 3.5 ft	1035 mm 3.4 ft	2720 mm 8.9 ft
LIV 320K	620 mm 2 ft	1080 mm 3.5 ft	1120 mm 3.7 ft	2820 mm 9.2 ft

From both sides easily accessible top-seat and ergonomic control levers and pedals make the steering of the crane a real pleasure. The customers can choose between manual control with 2 cross levers or 4 linear levers and 2 pedals. The seat can be adjusted to find the ideal working position for the crane operator.



Top-seat "B"

Rear-mounted top-seat is standard



	A	B	C	D	E	F
LIV 100K	385 mm 1.3 ft	525 mm 1.7 ft	735 mm 2.4 ft	1010 mm 3.3 ft	2460 mm 8.1 ft	
LIV 120K	457 mm 1.5 ft	595 mm 1.9 ft	830 mm 2.7 ft	1080 mm 3.5 ft	2560 mm 8.4 ft	240 mm 0.8 ft
LIV 130K - LIV 150K	385 mm 1.3 ft	525 mm 1.7 ft	735 mm 2.4 ft	1010 mm 3.3 ft	2460 mm 8.1 ft	
LIV 170K	395 mm 1.3 ft	535 mm 1.7 ft	755 mm 2.5 ft	1020 mm 3.3 ft	2480 mm 8.1 ft	
LIV 270K	385 mm 1.3 ft	530 mm 1.7 ft	730 mm 2.4 ft	1010 mm 3.3 ft	2455 mm 8.1 ft	
LIV 320K	670 mm 2.2 ft	810 mm 2.7 ft	920 mm 3 ft	1290 mm 4.2 ft	2559 mm 8.4 ft	330 mm 1.1 ft

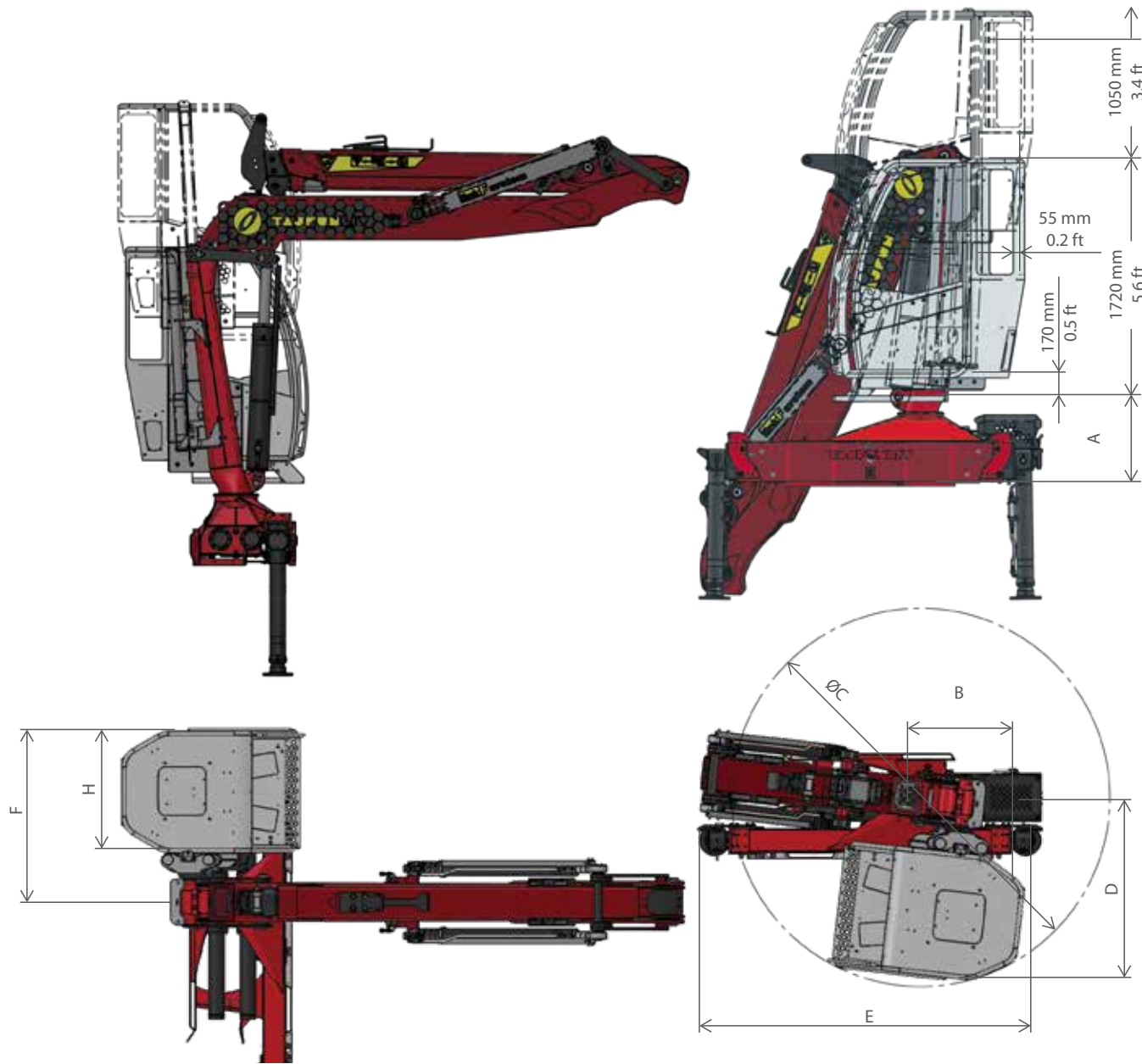
The top seat can be equipped with a protective weather hood (shelter) which folds over the operator's head and protects him against rain, snow, wind or strong sunlight.



Cabin

Standard Equipment

- Front and side door, both lockable
- Sliding windows on both sides
- 4 powerfull LED spot lights
- Interior lighting
- Windscreen wiper
- Roll-up windscreen protection cover for front door
- Radio stereo with MP3 player and USB port
- Cup holder
- Socket in cabin, 12 V power outlet
- Arm rests are adjustable
- Sound insulation
- Mehansko upravljanje z dvema križnima ali štirimi linearnimi ročicami in dvema pedaloma ali elektro-hidravično upravljanje z dvema joystickoma



Option

- Webasto diesel heating sytem with stage fan, with remote control
- Air condition mounted on the roof, with stage ventilator
- Truck engine start /stop and RPM +/- control from cabin
- Hultdins hydraulic damping je na voljo za funkciji obračanja in dvigovanja and it enables smooth and comfortable work. It dampens vibrations and reduces pressure peaks in the hydraulic system.

	A	B	C	D	E	F
LIV 100K	780 mm 2.6 ft	670 mm 2.2 ft	2850 mm 9.3 ft	1227 mm 4 ft	2430 mm 8 ft	1252 mm 4.1 ft
LIV 120K	780 mm 2.6 ft	650 mm 2.1 ft	2800 mm 9.2 ft	1210 mm 4 ft	2430 mm 8 ft	1235 mm 4 ft
LIV 130K - LIV 150K	780 mm 2.6 ft	670 mm 2.2 ft	2850 mm 9.3 ft	1227 mm 4 ft	2430 mm 8 ft	1252 mm 4.1 ft
LIV 170K	780 mm 2.6 ft	670 mm 2.2 ft	2850 mm 9.3 ft	1270 mm 4.2 ft	2460 mm 8.1 ft	1295 mm 4.2 ft
LIV 270K	780 mm 2.6 ft	670 mm 2.2 ft	2850 mm 9.3 ft	1227 mm 4 ft	2430 mm 8 ft	1252 mm 4.1 ft
LIV 320K	780 mm 2.6 ft	670 mm 2.2 ft	2850 mm 9.3 ft	1270 mm 4.2 ft	2460 mm 8.1 ft	1295 mm 4.2 ft



Tajfun LIV grapples

Tajfun LIV grapples are the result of our own development and production. Combining the properties of strength and resistance in addition to fast, smooth and efficient work is what makes the Tajfun Liv grapple a real helper when loading and unloading timber.

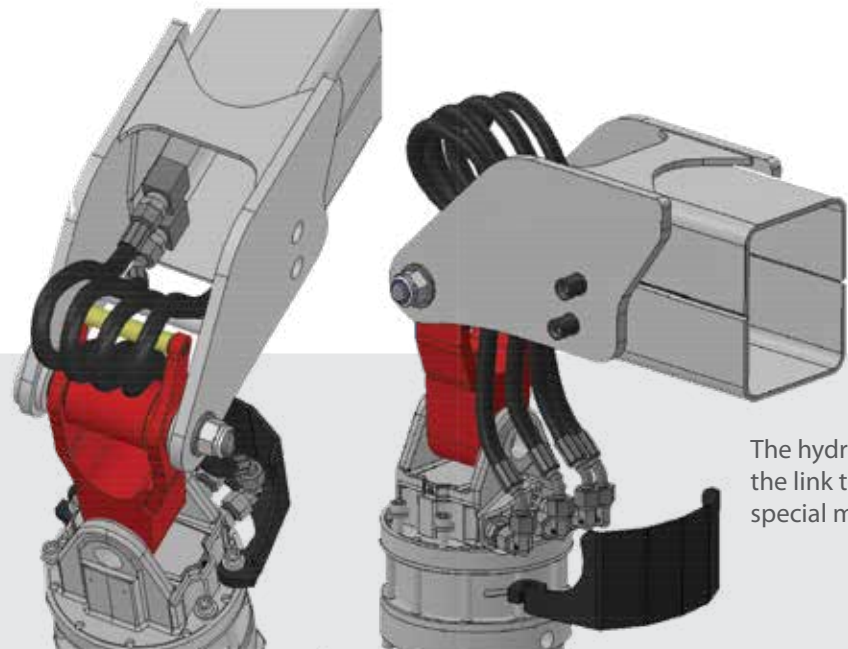
Maximum durability

- Both the casing and the jaws are made of high strength durable steel
- Optimal design of grapple jaws
- High quality welded joints
- Bronze bushes with greasing channels
- Good dampening in the end position of the grapple cylinder



**Strength and resistance –
Fast, smooth and efficient work**

	GO-026 X		GO-037 X		GO-043 X		GO-053 X		GO-0,53	
A _{nom}	0,26 m ²	2.8 ft ²	0,36 m ²	3.9 ft ²	0,41 m ²	4.4 ft ²	0,51 m ²	5.5 ft ²	0,53 m ²	5.7 ft ²
B	0,085 m	0.23 ft	0,11 m	0.4 ft	0,115 m	0.4 ft	0,16 m	0.5 ft	0,16 m	0.5 ft
C	1,51 m	4.9 ft	1,75 m	5.7 ft	1,86 m	6.1 ft	2,07 m	6.8 ft	2,3 m	7.5 ft
D	0,72 m	2.4 ft	0,83 m	2.7 ft	0,91 m	2.9 ft	0,85 m	2.8 ft	0,88 m	2.9 ft
E	0,87 m	2.6 ft	0,98 m	3.1 ft	1,07 m	3.5 ft	1,12 m	3.7 ft	1,14 m	3.7 ft
F	0,51 m	1.7 ft	0,58 m	1.9 ft	0,63 m	2.1 ft	0,68 m	2.2 ft	0,69 m	2.2 ft
G	0,81 m	2.7 ft	0,94 m	3.1 ft	1,02 m	3.5 ft	1,1 m	3.6 ft	1,1 m	3.6 ft
H	0,4 m	1.3 ft	0,45 m	1.5 ft	0,49 m	1.6 ft	0,49 m	1.6 ft	0,49 m	1.6 ft



The hydraulic hoses run from the crane tip through the link to the rotator and are well protected by a special metal shield.

	GO-026X	GO-037X	GO-043X	GO-053X	GO-0,53
Opening time at 50 l/min (13.2 gal/min)	1,8 s	1,8 s	2,1 s	2,1 s	2,4 s
Closing time at 50 l/min (13.2 gal/min)	1,7 s	2,7 s	3,1 s	3,1 s	3 s
Gripping force (A _{nom})	14,4 kN 3237 lbs	19,4 kN 4361 lbs	20 kN 4496 lbs	18 kN 4047 lbs	18,5 kN 4159 lbs
Max. operating pressure	23 MPa 3336 psi	23 MPa 3336 psi	23 MPa 3336 psi	23 MPa 3336 psi	23 MPa 3336 psi
Max. load	40 kN 8992 lbs	40 kN 8992 lbs	50 kN 11240 lbs	50 kN 11240 lbs	90 kN 20232 lbs
Weight	155 kg 342 lbs	215 kg 474 lbs	245 kg 540 lbs	260 kg 573 lbs	340 kg 749 lbs

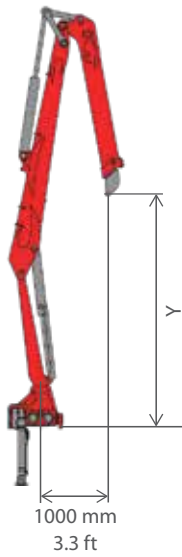
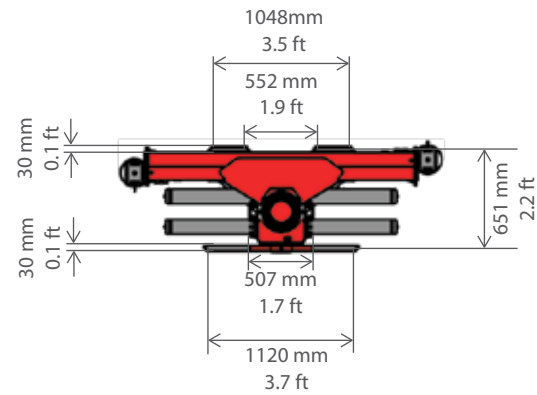
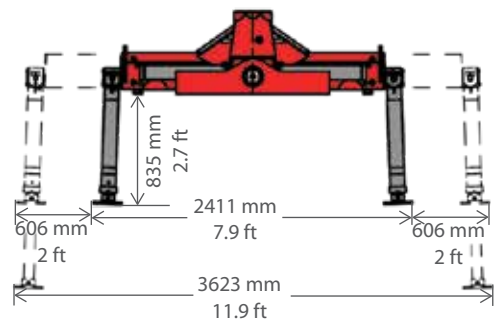
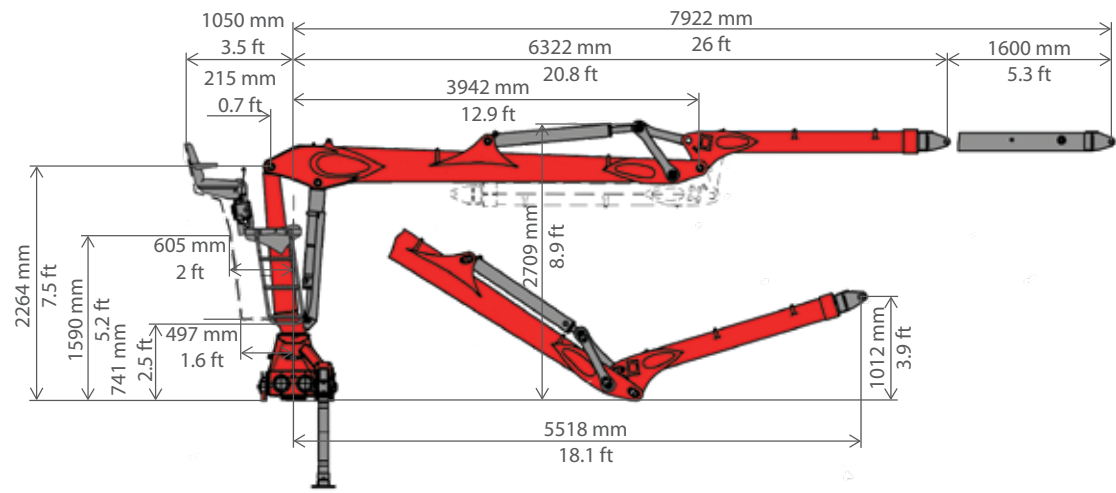
Tajfun LIV K



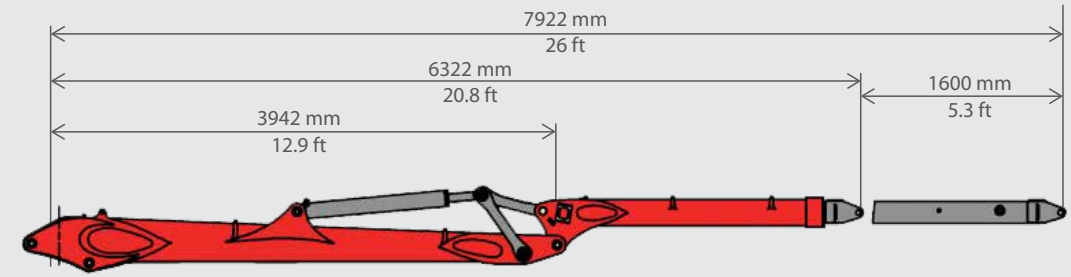
The »K« cranes are distinguished by their power and robustness. During transport, these cranes can be parked stretched out over the load or in the loading area or even over the truck cabin. The power link between the main and outer boom enables additional increase of the lifting moment in the horizontal position. The K-cranes with a great variety of boom systems, single or double telescopic extension, comply with most of the customer

requirements. These are versatile cranes for loading short and long timber and also waste materials. They are manufactured in capacity range from 10 to 31 tonne-metres and outreaches up to 11 m/36 ft. Loading long timber is an easy task for Tajfun Liv »K« cranes. They are suitable for truck, as well as for static mounting.

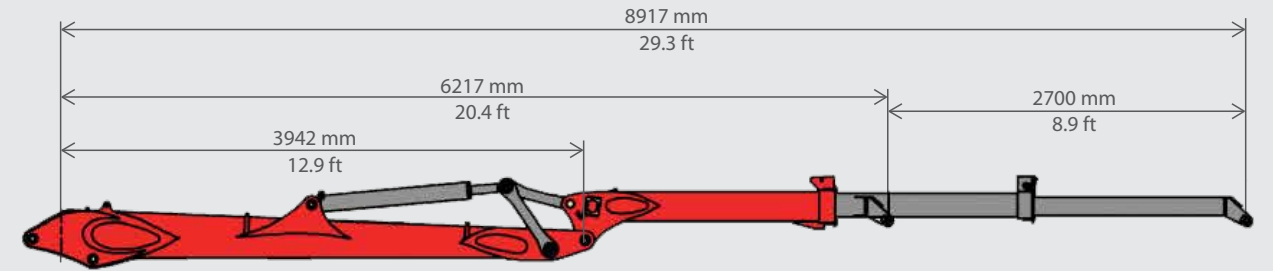
Tajfun LIV 100K



LIV 100K		
Y		
.79	4066 mm	13.4 ft
.88	4179 mm	13.7 ft



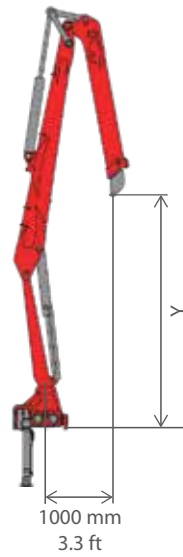
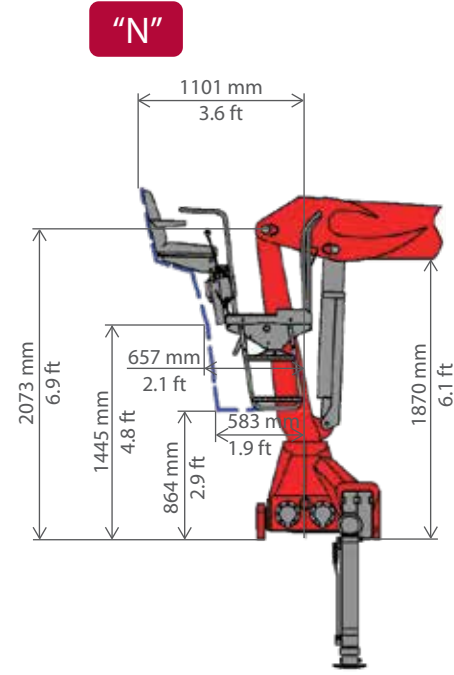
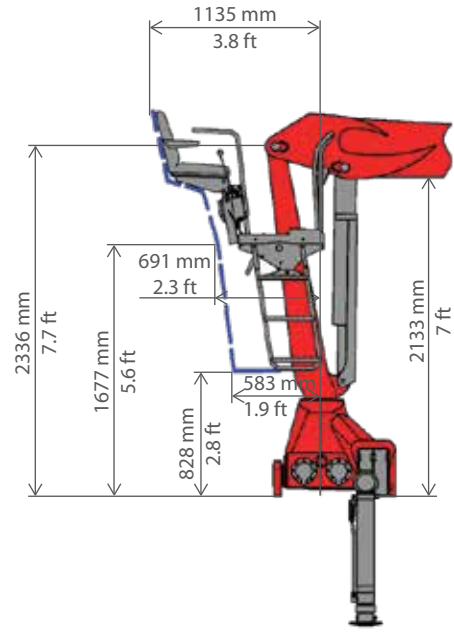
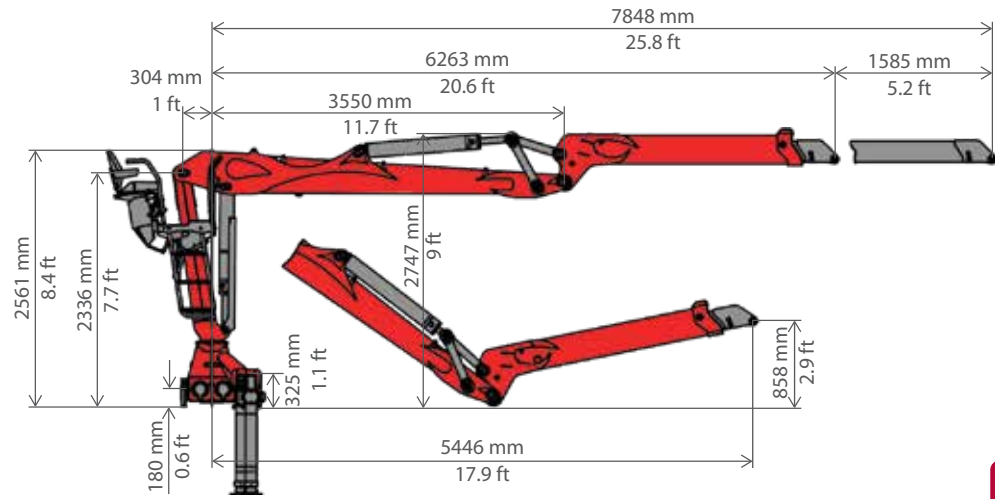
LIV 100K.78	m	3	4	5	6	7
	ft	9.8	13	16.4	19.6	23
kg	2965	2366	1919	1625	1352	
lbs	6536	5216	4230	3582	2980	



LIV 100K.88	m	3	4	5	6	7	8
	ft	9.8	13	16.4	19.6	23	26
kg	2950	2250	1803	1510	1280	1125	
lbs	6503	4960	3974	3328	2821	2480	

		LIV 100K.78	LIV 100K.88
Net lifting torque	T _m	95 kNm 70068 ft.lbs	90 kNm 66381 ft.lbs
Slewing angle		425 °	
Pump capacity		1x60/2x50/1x120 LS l/min	1x60/2x50/32 gal/min
Working pressure		23 MPa 3336 psi	23 MPa 3336 psi
Max. reach	H _{max}	7922 mm 26 ft	8917 mm 29.3 ft
Net slewing torque		26 kNm 19177 ft.lbs	26 kNm 19177 ft.lbs
Telescopic boom length		1600 mm 5.3 ft	2700 mm 8.9 ft
Weight		1950 kg 4299 lbs	2045 kg 4508 lbs

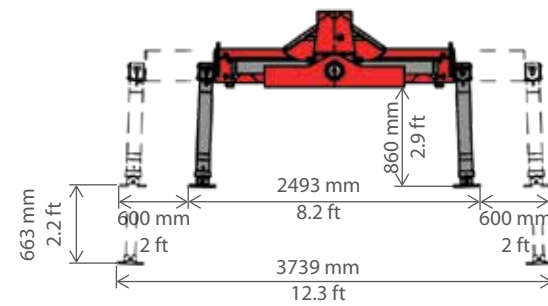
Tajfun LIV 120K



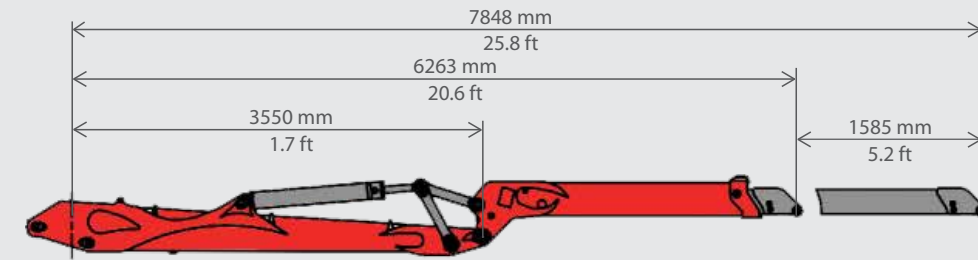
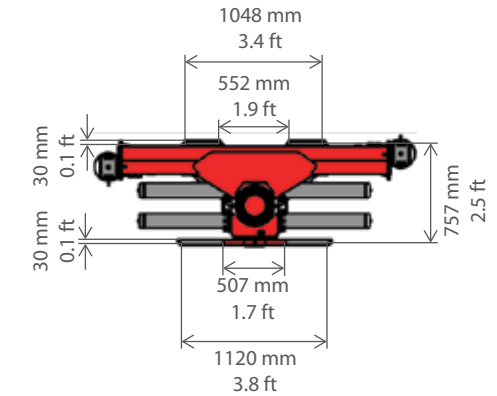
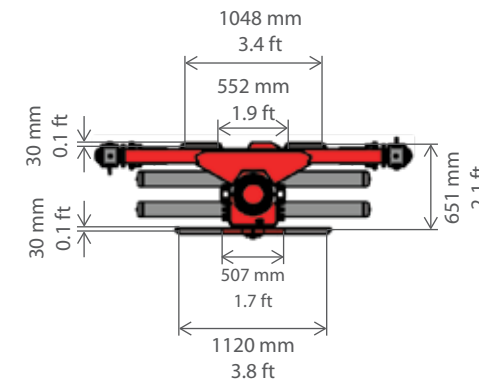
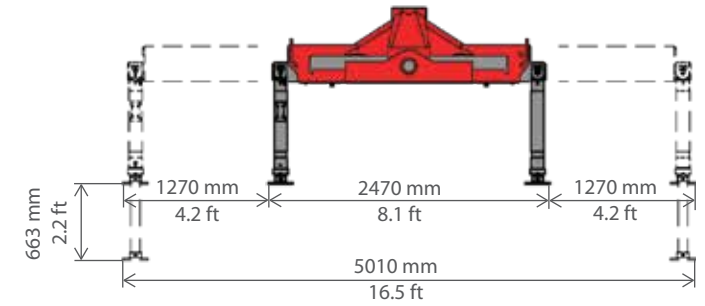
LIV 120K		
	Y	
.79	3700 mm	12.1 ft
.96	3550 mm	11.7 ft

		LIV 120K.79		LIV 120K.96	
Net lifting torque	T_m	114 kNm	84082 ft.lbs	107 kNm	78919 ft.lbs
Slewing angle		425°			
Pump capacity		1x70/2x60/1x150 LS l/min		1x70/2x60/1x40 gal/min	
Working pressure		25 MPa	3626 psi	25 MPa	3626 psi
Max. reach	H_{max}	7778 mm	25.6 ft	9537 mm	31.3 ft
Net slewing torque		26 kNm	191777 ft.lbs	26 kNm	191777 ft.lbs
Telescopic boom length		1585 mm	5.2 ft	3200 mm	10.5 ft
Weight		2270 kg	5004 lbs	2366 kg	5216 lbs

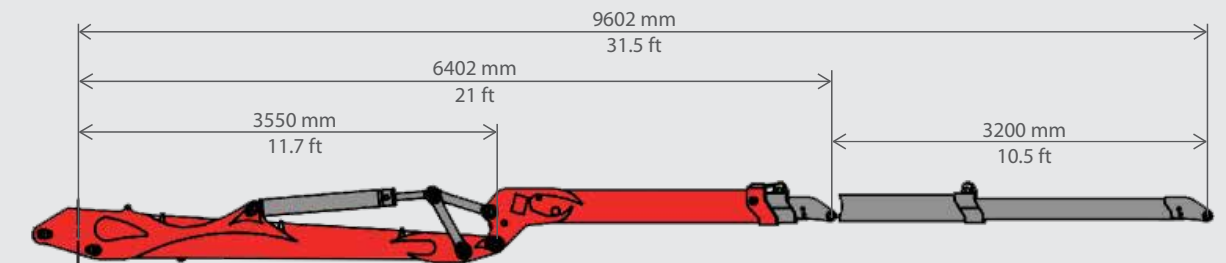
"SB"



"DB"

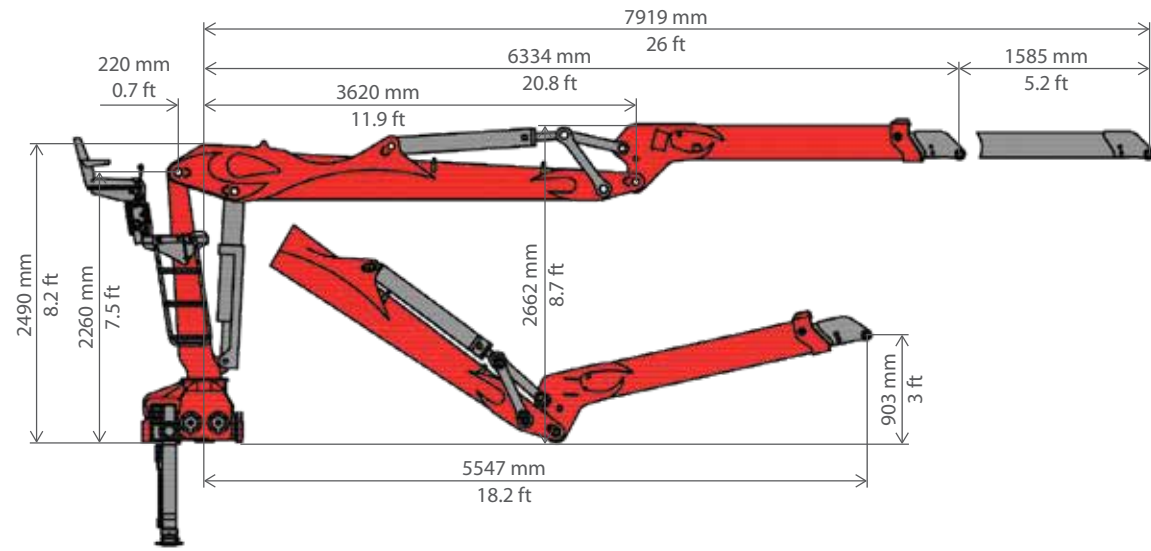


LIV 120K.79	m	4	5	6	7
	ft	13	16.4	19.6	23
kg	2680	2200	1820	1550	
lbs	5908	4850	4012	3417	



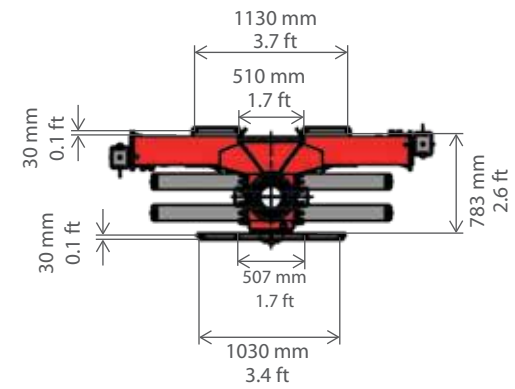
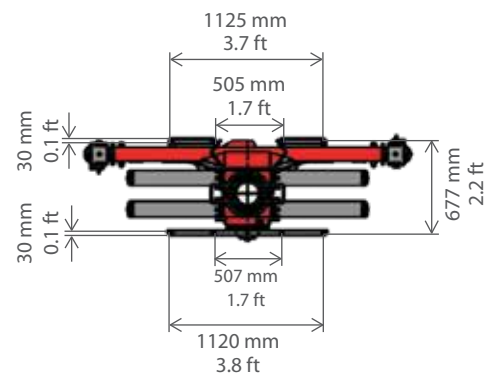
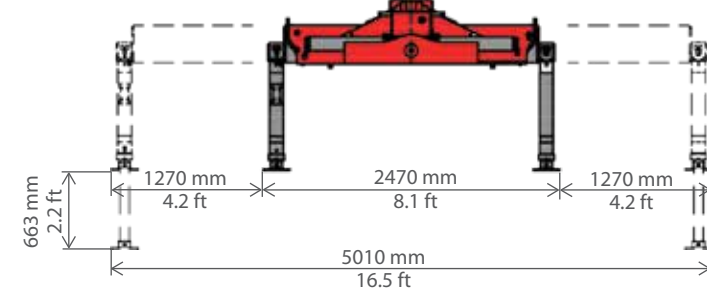
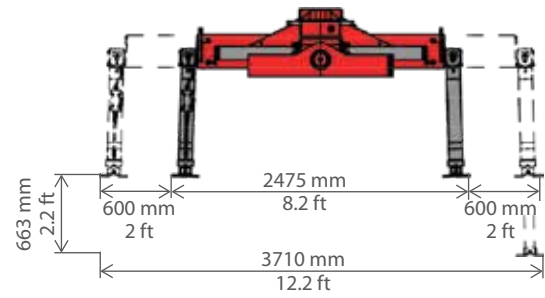
LIV 120K.96	m	4	5	6	7	8	9
	ft	13	16.4	19.6	23	26	29.5
kg	2610	2120	1750	1480	1200	960	
lbs	5754	4673	3858	3262	2645	2116	

Tajfun LIV 130K



"SB"

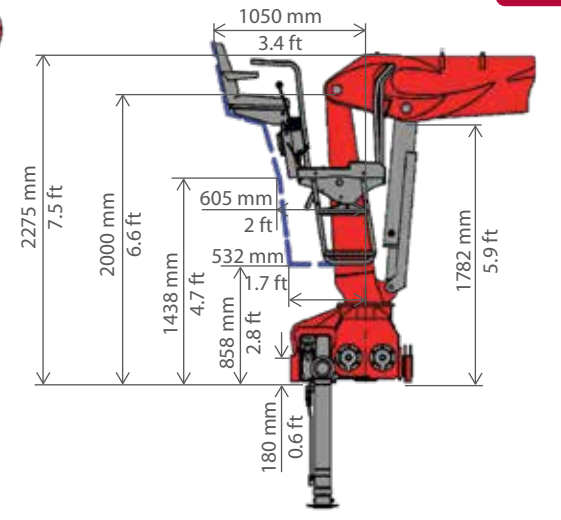
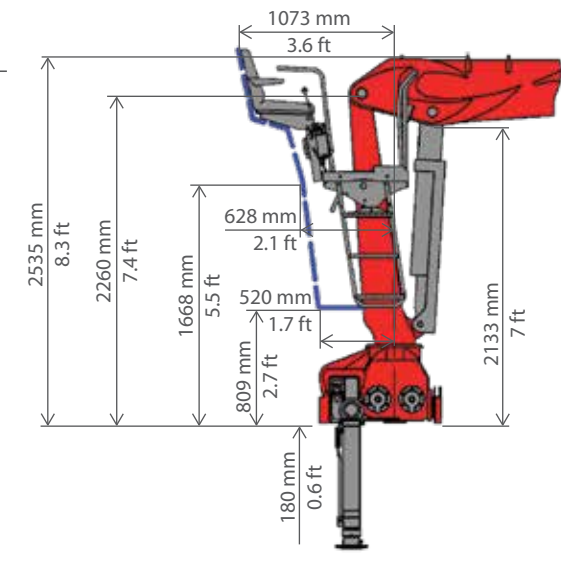
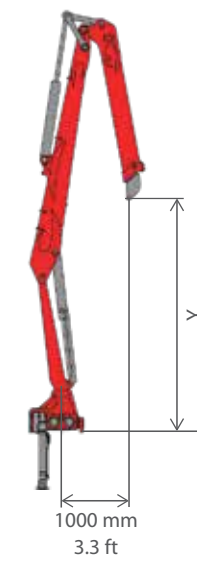
"DB"



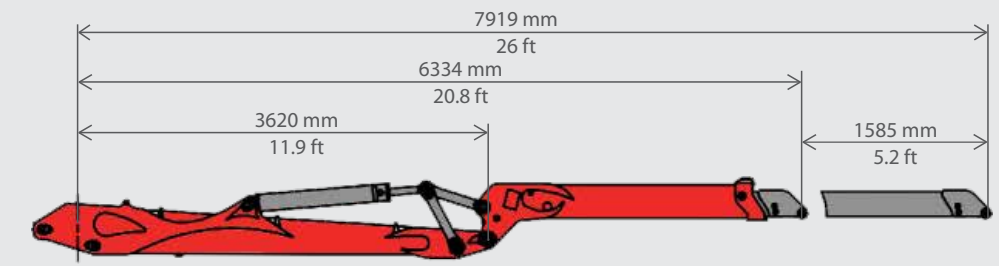
		LIV 130K.79		LIV 130K.96	
Net lifting torque	Tm	132 kNm	94408 ft.lbs	124 kNm	91458 ft.lbs
Slewing angle		425 °			
Pump capacity		1x80/2x70/1x150 LS l/min		1x80/2x70/1x 40 gal/min	
Working pressure		23 MPa		3336 psi	
Max. reach	H _{max}	7919 mm	26 ft	9684 mm	31.8 ft
Net slewing torque		28 kNm		20652 ft.lbs	
Telescopic boom length		1585 mm	5.2 ft	3200 mm	10.5 ft
Weight		2470 kg	5445 lbs	2566 kg	5657 lbs

LIV 130K

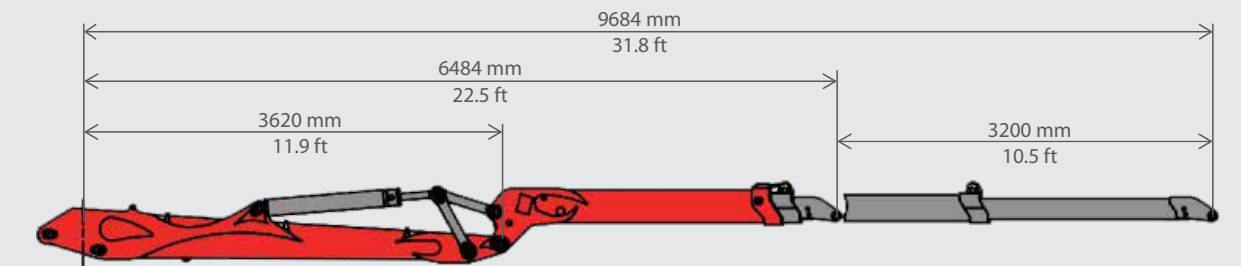
	Y	
.79	3258 mm	10.7 ft
.96	3119 mm	10.2 ft



"N"

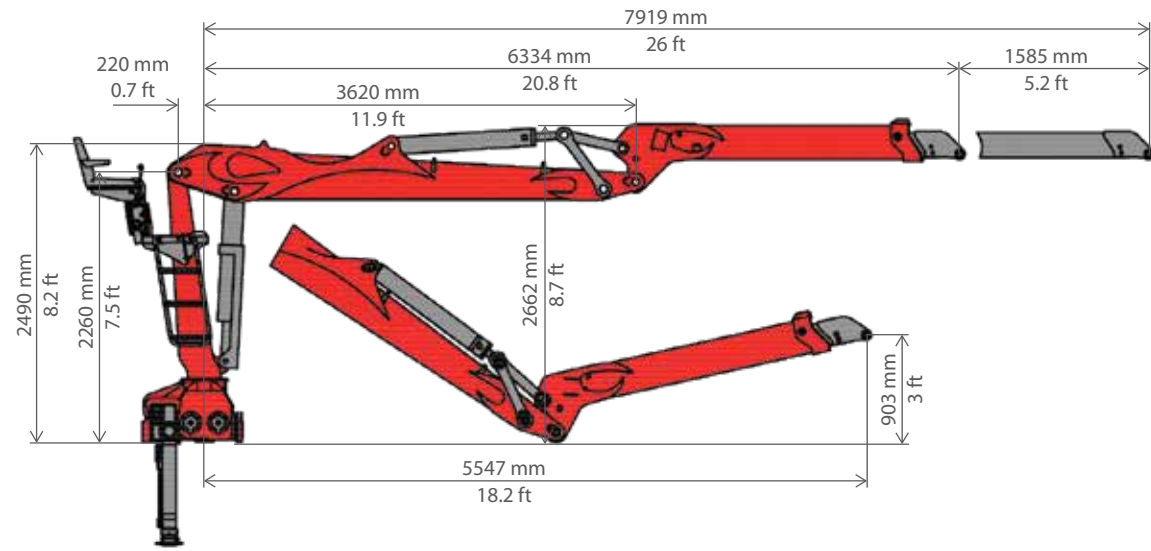


	m	3	4	5	6	7
LIV 130K.79	ft	9.8	13	16.4	19.6	23
	kg	3880	3050	2580	2230	1910
	lbs	8553	6724	5687	4916	4210



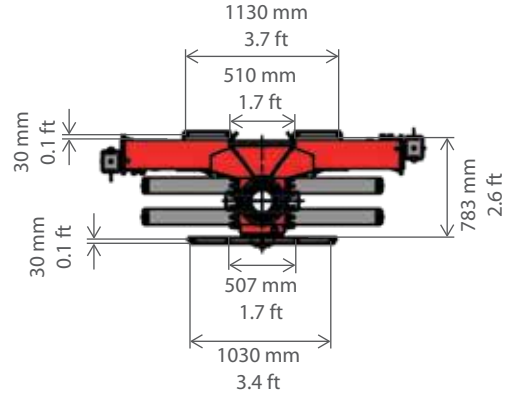
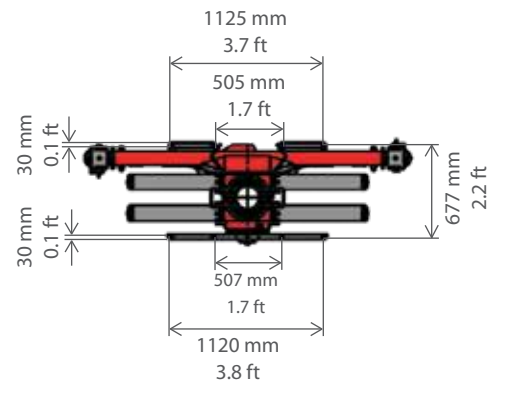
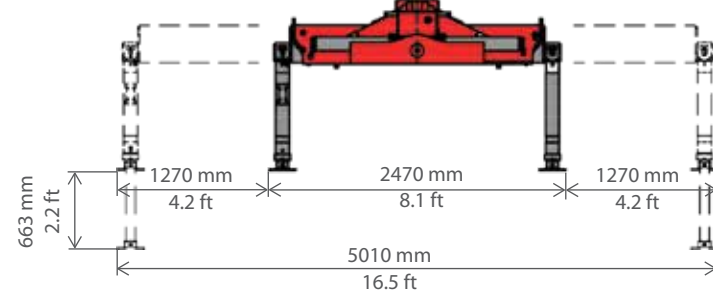
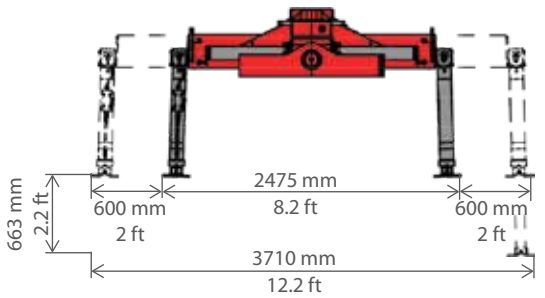
	m	5	6	7	8	9
LIV 130K.96	ft	16.4	19.6	23	26	29.5
	kg	2480	2160	1850	1530	1230
	lbs	5467	4761	4078	3373	2711

Tajfun LIV 150K



"SB"

"DB"



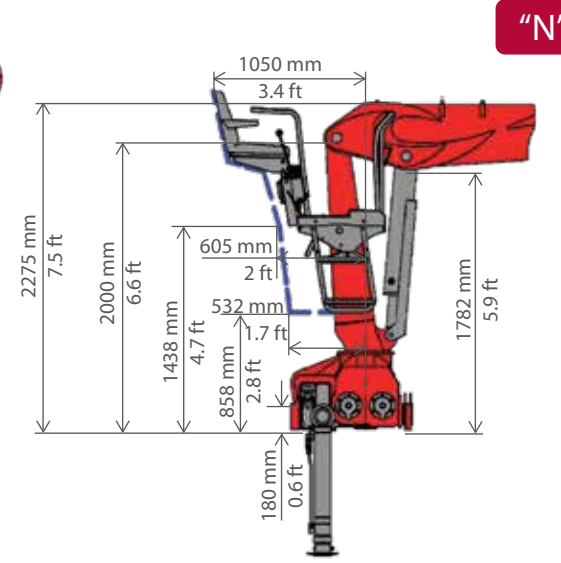
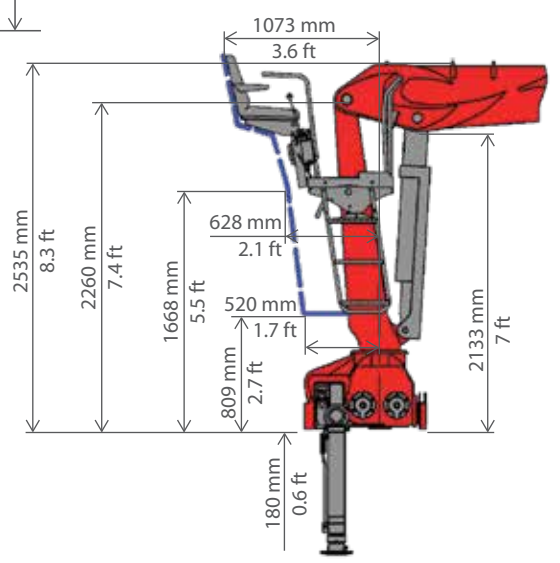
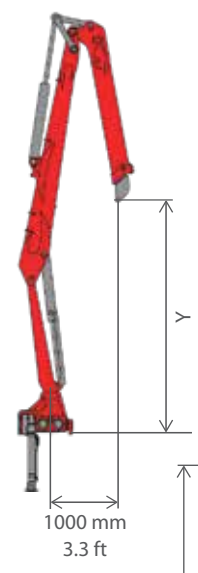
LIV 150K.79

LIV 150K.96

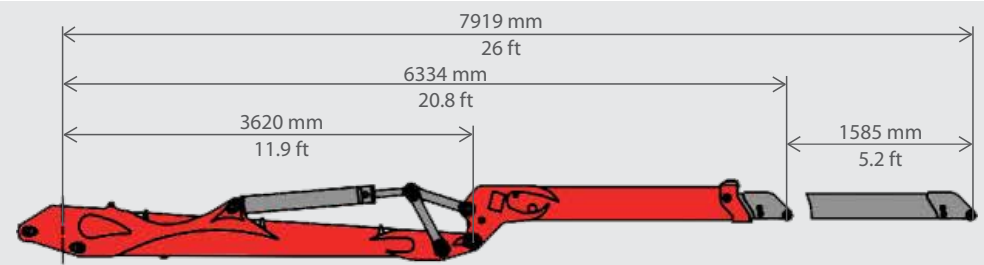
Net lifting torque	T_m	150 kNm	110634 ft.lbs	143 kNm	105471 ft.lbs
Slewing angle		425°			
Pump capacity		1x80/2x70/1x150 LS l/min		1x80/2x70/40 gal/min	
Working pressure		26 MPa		3771 psi	
Max. reach	H_{max}	7919 mm	26 ft	9684 mm	31.8 ft
Net slewing torque		28 kNm		20652 ft.lbs	
Telescopic boom length		1585 mm	5.2 ft	3200 mm	10.5 ft
Weight		2490 kg	5489 lbs	2586 kg	5701 lbs

LIV 150K

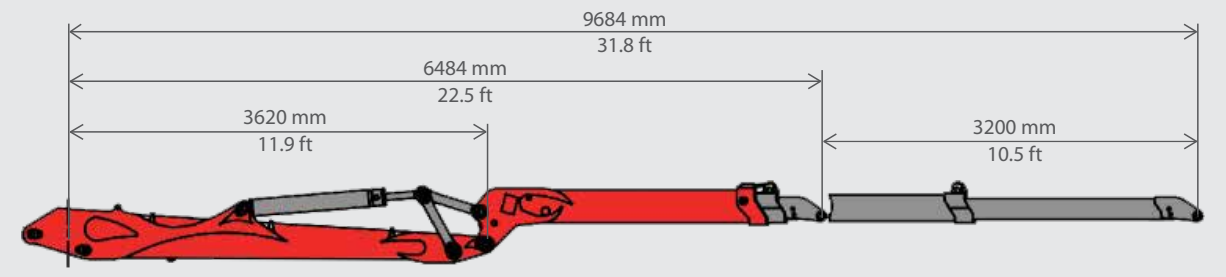
Y		
.79	3258 mm	10.7 ft
.96	3119 mm	10.2 ft



"N"

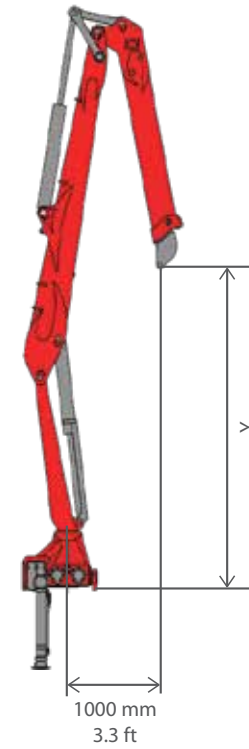
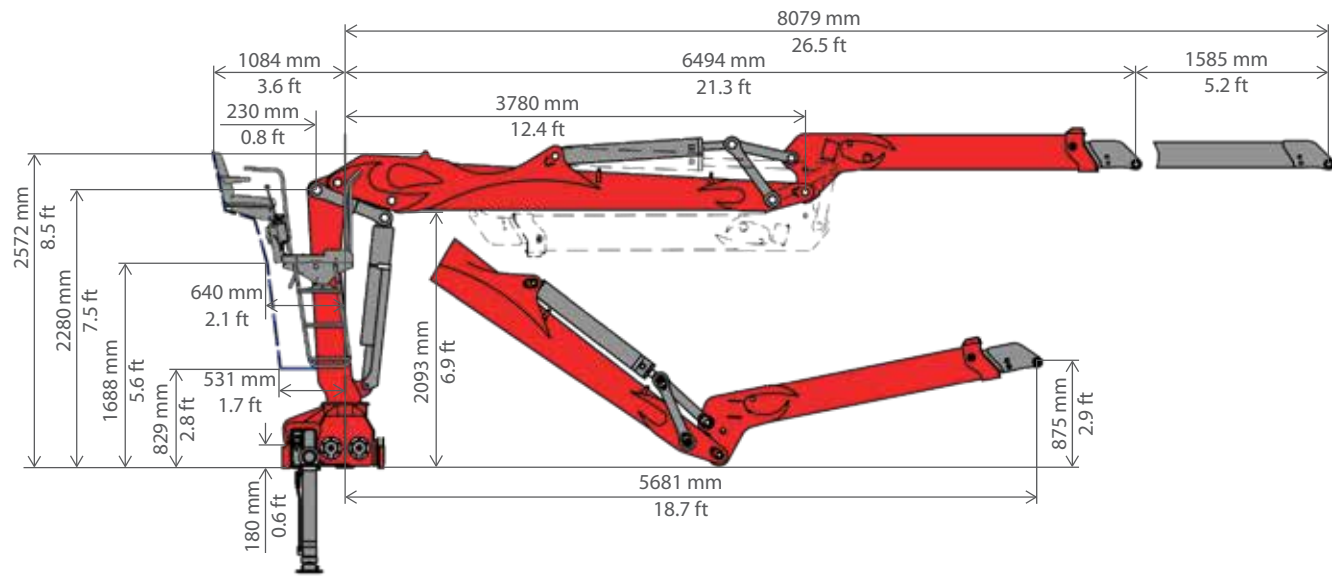


LIV 150K.79	m	3	4	5	6	7
	ft	9.8	13	16.4	19.6	23
	kg	4280	3360	2830	2460	2120
	lbs	9435	7407	6239	5423	4673



LIV 150K.96	m	5	6	7	8	9
	ft	16.4	19.6	23	26	29.5
	kg	2740	2390	2050	1670	1360
	lbs	6040	5269	4519	3681	2998

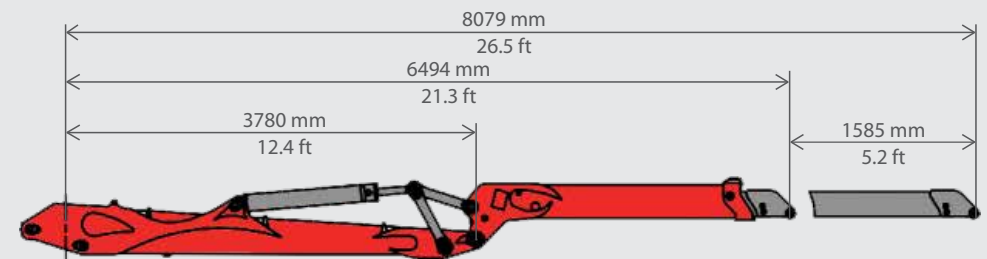
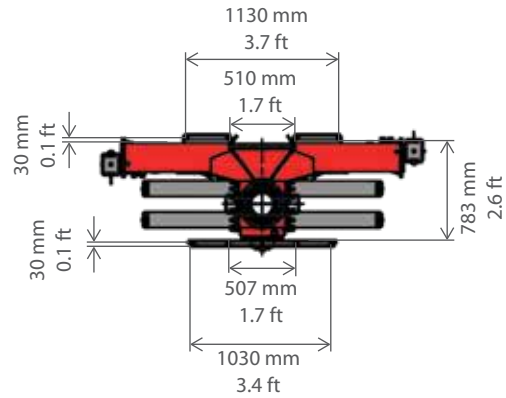
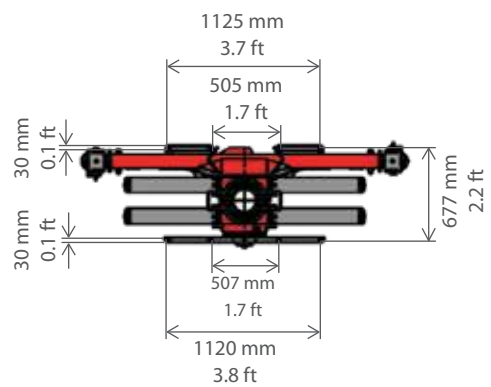
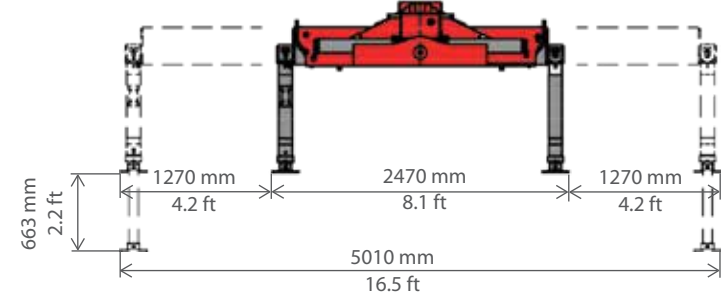
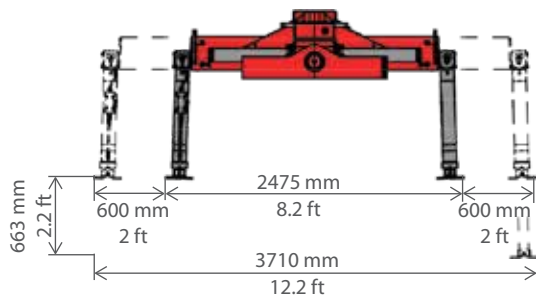
Tajfun LIV 170K



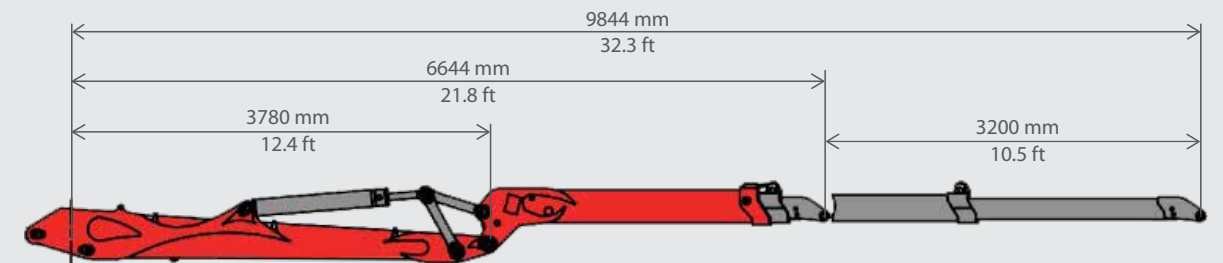
LIV 170K		
Y		
.79	3310 mm	10.9 ft
.96	3606 mm	11.9 ft

"SB"

"DB"



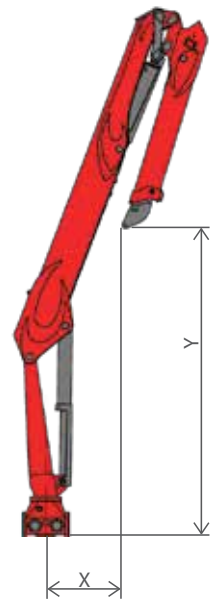
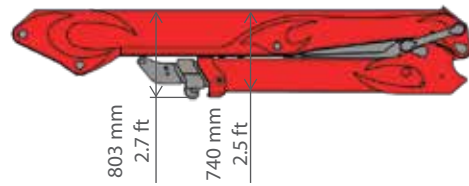
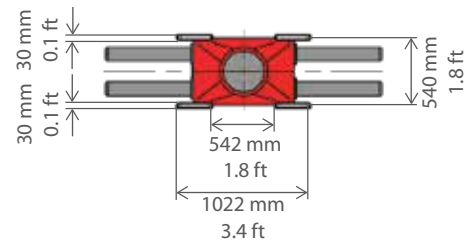
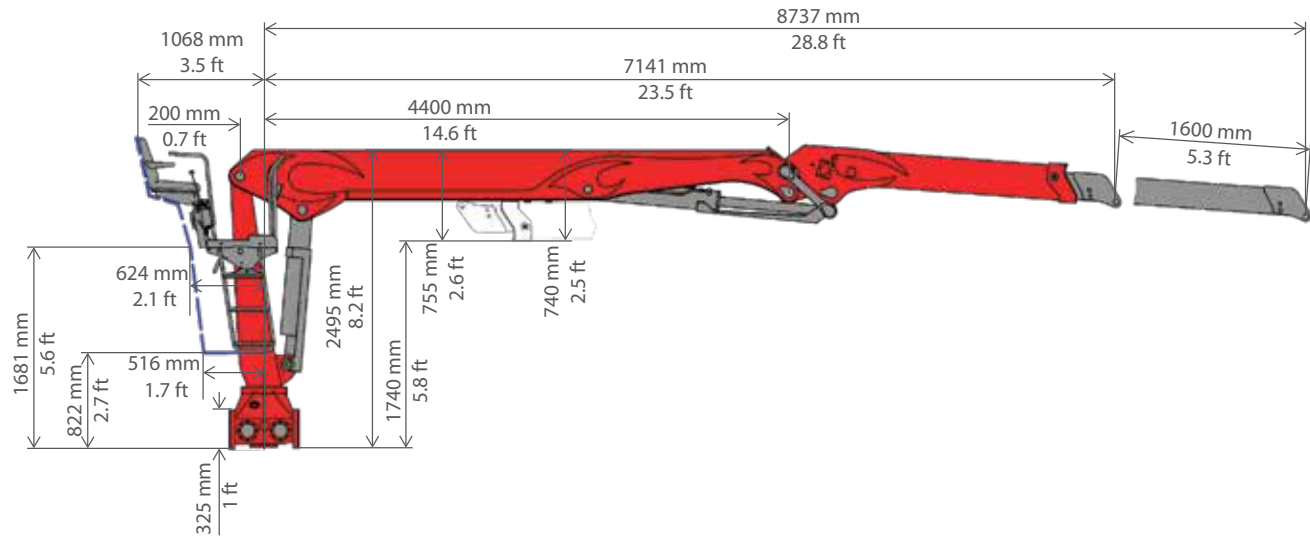
	m	3	4	5	6	7
LIV 170K.79	ft	9.8	13	16.4	19.6	23
	kg	5030	3810	3110	2650	2260
	lbs	11089	8399	6856	5842	4982



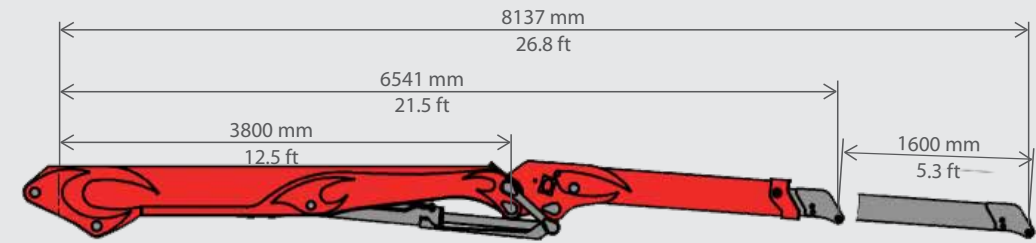
	m	5	6	7	8	9
LIV 170K.96	ft	16.4	19.6	23	26	29.5
	kg	3010	2550	2170	1870	1640
	lbs	6635	5621	4784	4122	3615

		LIV 170K.79		LIV 170K.96	
Net lifting torque	T _m	160 kNm	118010 ft.lbs	152 kNm	112109 ft.lbs
Slewing angle		425°			
Pump capacity		1x80/2x70/1x150 LS l/min		1x80/2x70/40 gal/min	
Working pressure		26 MPa		3771 psi	
Max. reach	H _{max}	8079 mm	26.5 ft	9844 mm	32.3 ft
Net slewing torque		28 kNm		20652 ft.lbs	
Telescopic boom length		1585 mm	5.2 ft	3200 mm	10.5 ft
Weight		2550 kg	5621 lbs	2646 kg	5833 lbs

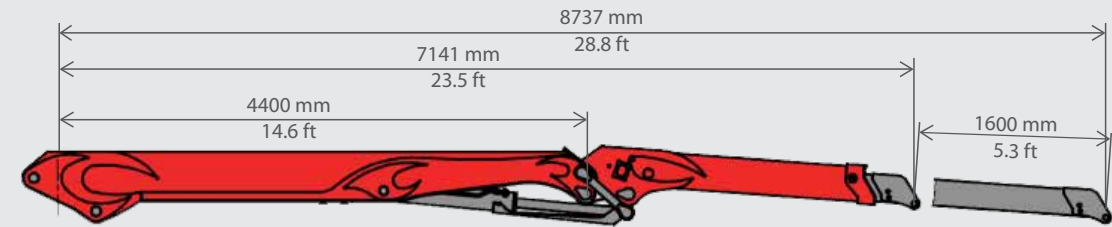
Tajfun LIV 270K



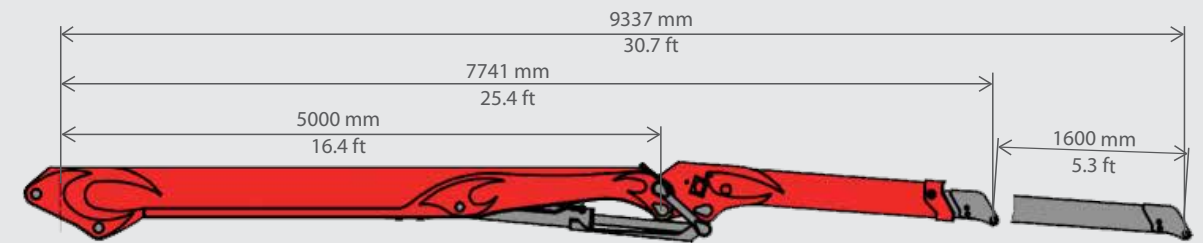
LIV 270K				
	X		Y	
.81	1000 mm	3.3 ft	3272 mm	10.8 ft
.87	1000 mm	3.3 ft	3845 mm	12.6 ft
.93	1000 mm	3.3 ft	4455 mm	14.7 ft
.99	1000 mm	3.3 ft	3123 mm	10.3 ft
.110	1000 mm	3.3 ft	2865 mm	9.4 ft



	m	4	5	6	7	8
LIV 270K.81	ft	13	16.4	19.6	23	26
	kg	6190	5060	4210	3610	2920
	lbs	13646	11155	9281	7958	6437

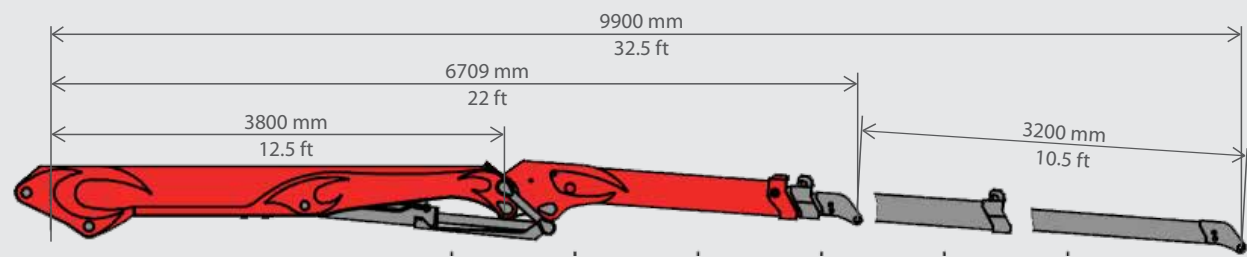


	m	4	5	6	7	8
LIV 270K.87	ft	13	16.4	19.6	23	26
	kg	6220	5040	4200	3570	3120
	lbs	13712	11111	9259	7870	6878

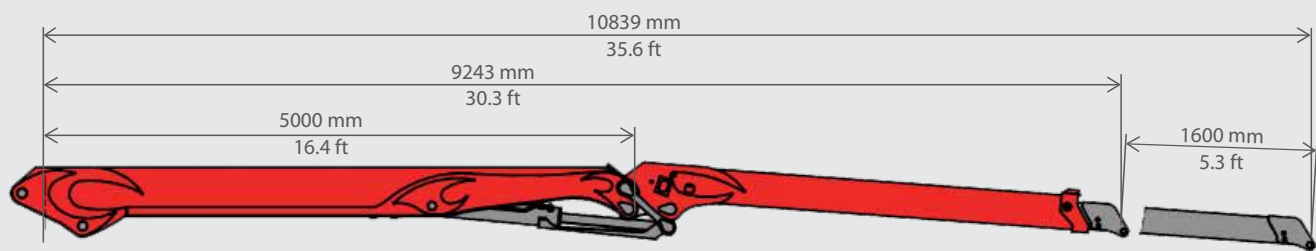


	m	4	5	6	7	8	9
LIV 270K.93	ft	13	16.4	19.6	23	26	29.5
	kg	6210	5060	4220	3580	3210	2690
	lbs	13690	11155	9303	7892	6878	5930

		LIV 270K.81		LIV 270K.87		LIV 270K.93		LIV 270K.99		LIV 270K.110			
Net lifting torque	Tm	61 kNm	192504 ft.lbs	260 kNm	191766 ft.lbs	257 kNm	189553 ft.lbs	260 kNm	191766 ft.lbs	245 kNm	180703 ft.lbs		
Slewing angle		405°				405°							
Pump capacity		1x90/2x80/1x150 LS l/min		1x90/2x80/1x40 gal/min		1x90/2x80/1x150 LS l/min		1x90/2x80/1x40 gal/min					
Working pressure		25 MPa		3626 psi		25 MPa		3626 psi					
Max. reach		8070 mm	26.5 ft	8670 mm	28.5 ft	9270 mm	30.5 ft	9823 mm	32.2 ft	10784 mm	35.4 ft		
Net slewing torque		41 kNm				30240 ft.lbs							
Telescopic boom length		1600 mm	5.3 ft	1600 mm	5.3 ft	1600 mm	5.3 ft	3200 mm	10.5 ft	1600 mm	5.3 ft		
Weight		2622 kg	30240 lbs	2656 kg	5855 lbs	2817 kg	6210 lbs	3052 kg	6728 lbs	2903 kg	6400 lbs		



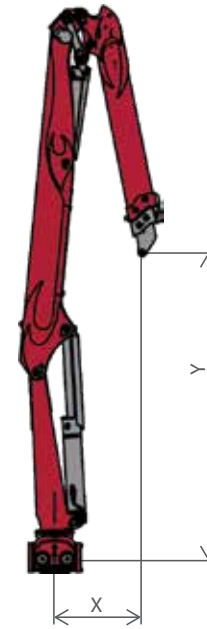
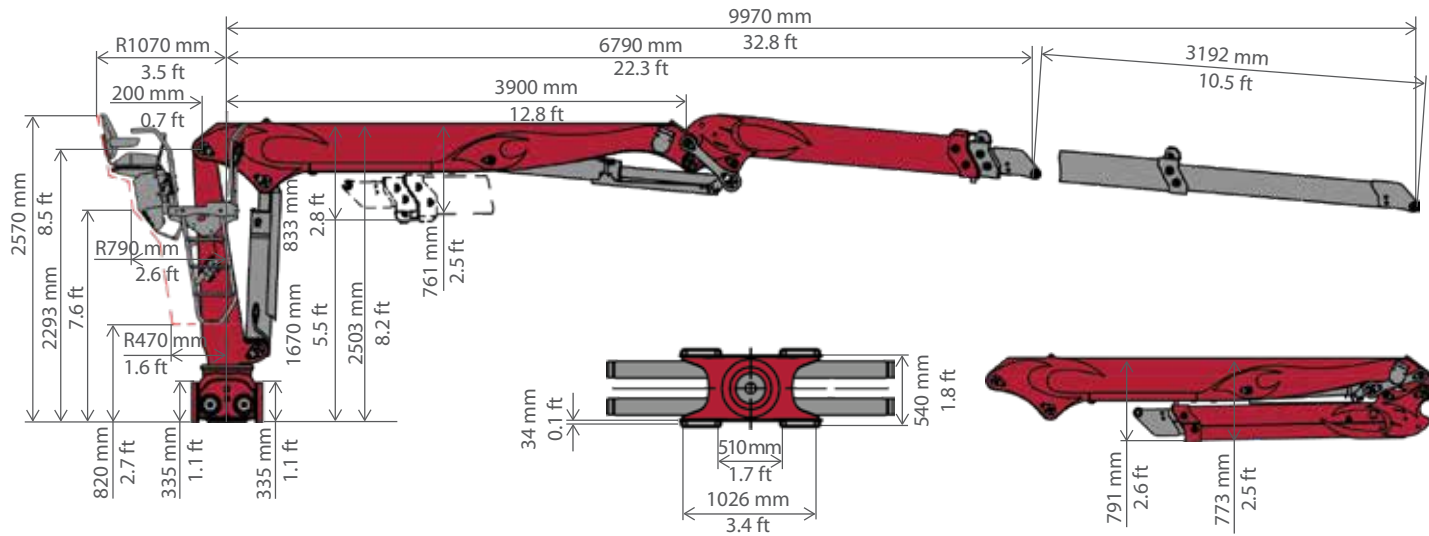
LIV 270K.99	m	4	5	6	7	8	9
	ft	13	16.4	19.6	23	26	29.5
	kg	6200	5080	4230	3620	2920	2320
	lbs	13668	11199	9325	7980	6437	5114



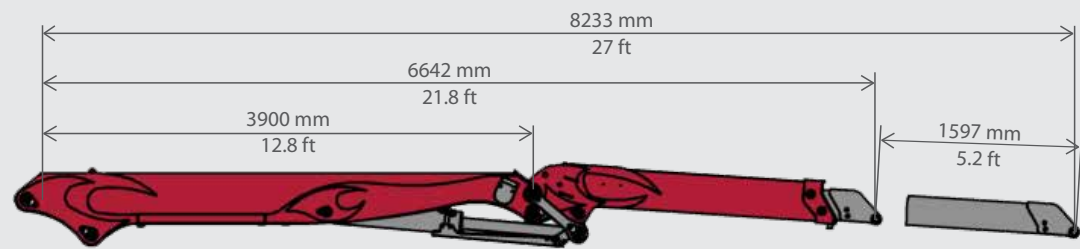
LIV 270K.110	m	6	7	8	9	10
	ft	19.6	23	26	29.5	32.8
	kg	3940	3430	2990	2600	2330
	lbs	8686	7561	6591	5732	5136



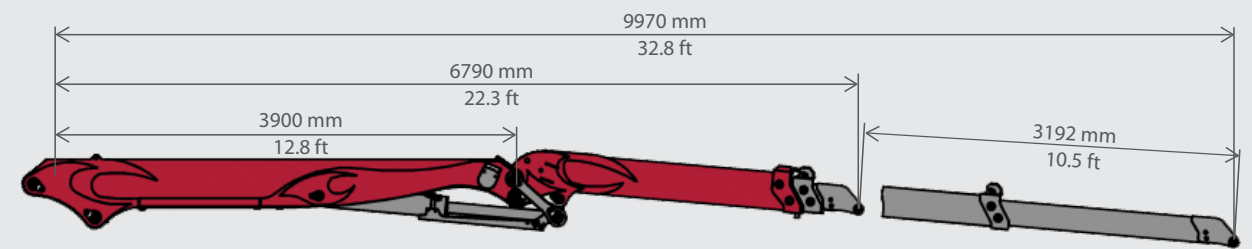
Tajfun LIV 320K



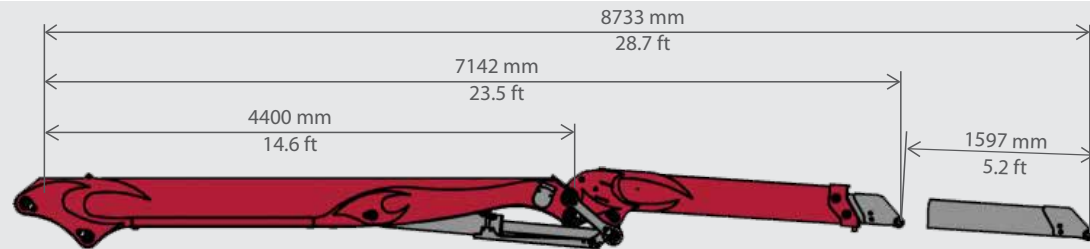
LIV 320K				
		X	Y	
.81	1000 mm	3.3 ft	3710 mm	12.2 ft
.87	1000 mm	3.3 ft	4195 mm	13.8 ft
.99	1000 mm	3.3 ft	3655 mm	12 ft
.105	1000 mm	3.3 ft	4044 mm	13.3 ft



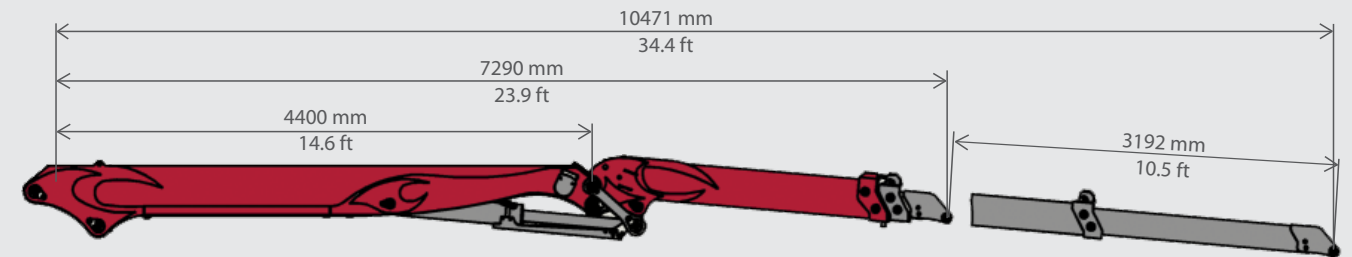
LIV 320K.81	m	4	5	6	7	8
	ft	13	16.4	19.6	23	26
	kg	7520	6120	5130	4350	3290
	lbs	16578	13492	11309	9590	7253



LIV 320K.99	m	4	5	6	7	8	9
	ft	13	16.4	19.6	23	26	29.5
	kg	7530	6150	5160	4360	3290	2660
	lbs	16600	13558	11375	9612	7253	5864



LIV 320K.87	m	4	5	6	7	8
	ft	13	16.4	19.6	23	26
	kg	7550	5920	4950	4170	3290
	lbs	16644	13051	10912	9193	7253



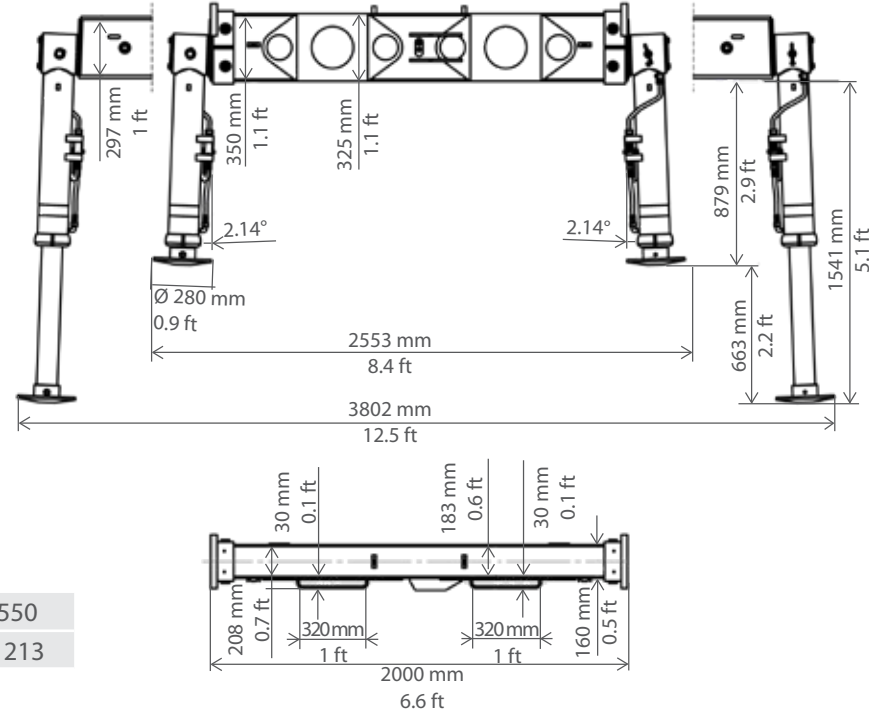
LIV 320K.105	m	4	5	6	7	8	9	10
	ft	13	16.4	19.6	23	26	29.5	32.8
	kg	7550	5920	4950	4170	3290	2660	2250
	lbs	16644	13051	10912	9193	7253	5864	4960

		LIV 320K.81		LIV 320K.87		LIV 320K.99		LIV 320K.105	
Net lifting torque	Tm	315 kNm 232332 ft.lbs		315 kNm 232332 ft.lbs		315 kNm 232332 ft.lbs		315 kNm 232332 ft.lbs	
Slewing angle		405°		405°		405°		405°	
Pump capacity		1x90/2x80/1x150 LS l/min		1x90/2x80/1x40 gal/min		1x90/2x80/1x150 LS l/min		1x90/2x80/1x40 gal/min	
Working pressure		28 MPa 4061 psi		28 MPa 4061 psi		28 MPa 4061 psi		28 MPa 4061 psi	
Max. reach	max	8070 mm 26.5 ft	8733 mm 28.6 ft	9971 mm 32.7 ft	10471 mm 34.4 ft				
Net slewing torque		48 kNm 35403 ft.lbs		48 kNm 35403 ft.lbs		48 kNm 35403 ft.lbs		48 kNm 35403 ft.lbs	
Telescopic boom length		1600 mm 5.3 ft	1597 mm 5.2 ft	3192 mm 10.5 ft	3192 mm 10.5 ft				
Weight		2687 kg 5923 lbs	3060 kg 6746 lbs	3200 kg 7054 lbs	3250 kg 7165 lbs				

Additional bridges

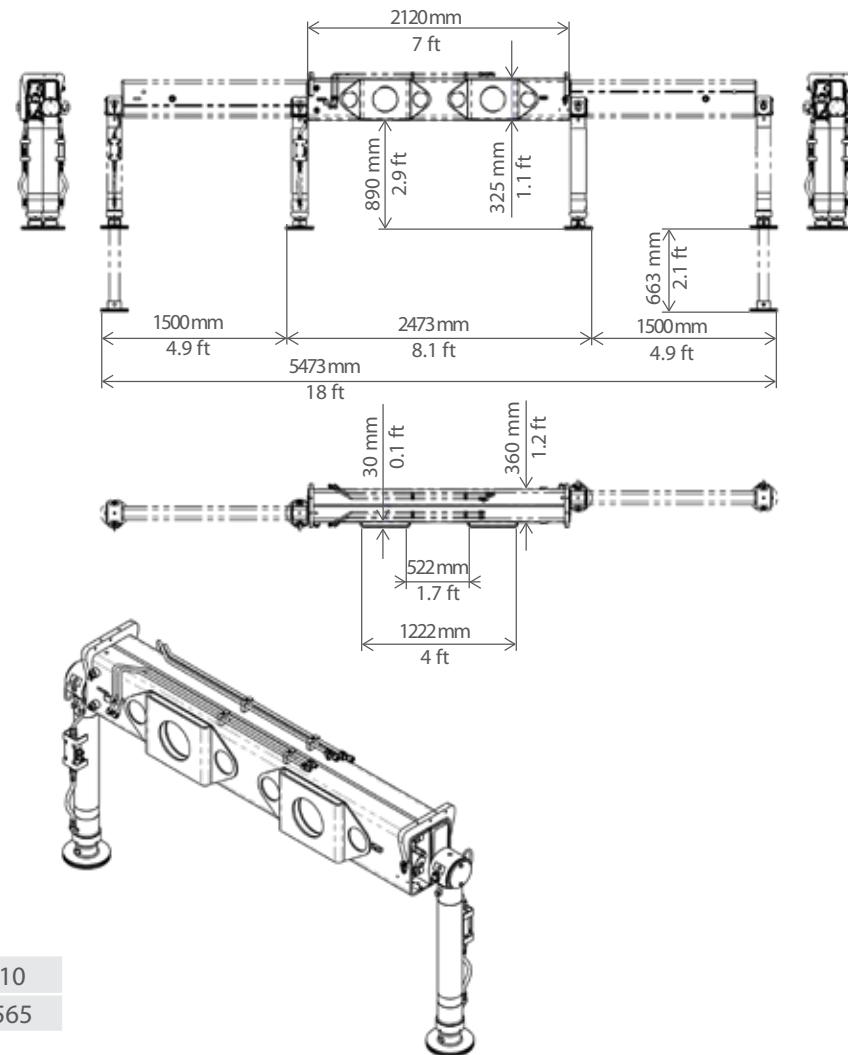
*Available only for hydraulic timber cranes LIV 270K and LIV 320K

Bridge 2x600 L25



Bridge 2x600 L25	kg	550
	lbs	1213

Bridge 2x1500 L25



Bridge 2x600 L25	kg	710
	lbs	1565



Accessories and additional equipment

	L100K	L120K	LIV130K	LIV150K	LIV170K	L270K	L320K
Boom system K (straight boom)	✓	✓	✓	✓	✓	✓	✓
Stabilizers-single extension 3,8 m/12.5 ft-standard	✓	✓	✓	✓	✓	✓	✓
Integrated stabilizers-double extension 5,0 m/16.4 ft		✓	✓	✓	✓		
Separate stabilizers-double extension 5,5 m/18 ft						✓	✓
Prolongation for stabilizer leg (100 mm or 200 mm/0.33 ft or 0.66 ft)	✓	✓	✓	✓	✓	✓	✓
Fold-up kit 45° for stabilizers (for transport position)	✓	✓	✓	✓	✓	✓	✓
Fold-up kit 180° for stabilizers (for transport position)	✓	✓	✓	✓	✓	✓	✓
Internal hosing in the second boom		✓	✓	✓	✓	✓	✓
Crane controls: 2 cross levers + 2 pedals	✓	✓	✓	✓	✓	✓	✓
Crane controls: 4 linear levers + 2 pedals	✓	✓	✓	✓	✓	✓	✓
Single hydraulic system: -circuit	✓	✓	✓	✓	✓	✓	✓
Double hydraulic system: -circuits	✓	✓	✓	✓	✓	✓	✓
Hydraulic system: load sensing	✓	✓	✓	✓	✓	✓	✓
Remote radio control Scanreco (hydraulic system Danfoss PVG)	✓	✓	✓	✓	✓	✓	✓
Heel for long timber (stem support)						✓	✓
Heated seat (24V)	✓	✓	✓	✓	✓	✓	✓
LED spotlights on the second boom	✓	✓	✓	✓	✓	✓	✓
LED spotlights on top seat	✓	✓	✓	✓	✓	✓	✓
Inclination/tilting sensor	✓	✓	✓	✓	✓	✓	✓
Weather hood over the seat	✓	✓	✓	✓	✓	✓	✓
Cabin with mechanical controls: 2 cross levers or 4 linear levers and 2 pedals (Parker valves)		✓	✓	✓	✓	✓	✓
Cabin with electric controls with joysticks (Danfoss PVG hydraulic system)		✓	✓	✓	✓	✓	✓
Air condition in the cabin		✓	✓	✓	✓	✓	✓
Diesel/Webasto heating in the cabin		✓	✓	✓	✓	✓	✓
Biodegradable oil	✓	✓	✓	✓	✓	✓	✓
Damping system for rotation and lifting (Hultdins)	✓	✓	✓	✓	✓	✓	✓
Central lubrication system-manual		✓	✓	✓	✓	✓	✓
Central lubrication system-electrical		✓	✓	✓	✓	✓	✓
Painting (color) according to RAL definition	✓	✓	✓	✓	✓	✓	✓
Over center valve	✓	✓	✓	✓	✓	✓	✓
Load moment limiter	✓	✓	✓	✓	✓	✓	✓



United States West Coast Importer and Tajfun's United States Representative Office
TAJFUN USA LLC

6910 Salashan Parkway, Suite B-3
Ferndale, WA 98248
United States
P: +1 360 224 15 89
E: tajfunusa@tajfun.com
W: www.tajfun.com & www.tajfunusa.com



CANADA - East
Industries Renaud Gravel, Inc.

71, Chemin St-Gabriel
St-Cleophas-de-Brandon (Quebec), J0K 2N0
Canada
P: +1 (450) 889 27 94
F: +1 (450) 889 81 03
E: info@indgravel.com
W: www.indgravel.com

CANADA - West
BIG BEAR SERVICES

RR 1
T0M 0W0 Didsbury, Alberta
P: +1 403 638-6763
E: bubbabert@telus.net



TAJFUNLIV

Tajfun Liv d. o. o.
Industrijska cesta 2
SI-6230 Postojna
Slovenija

☎ +386 (0)5 728 39 60
📠 +386 (0)5 728 38 64
✉ info@tajfun-liv.si
🌐 www.tajfunliv.com

