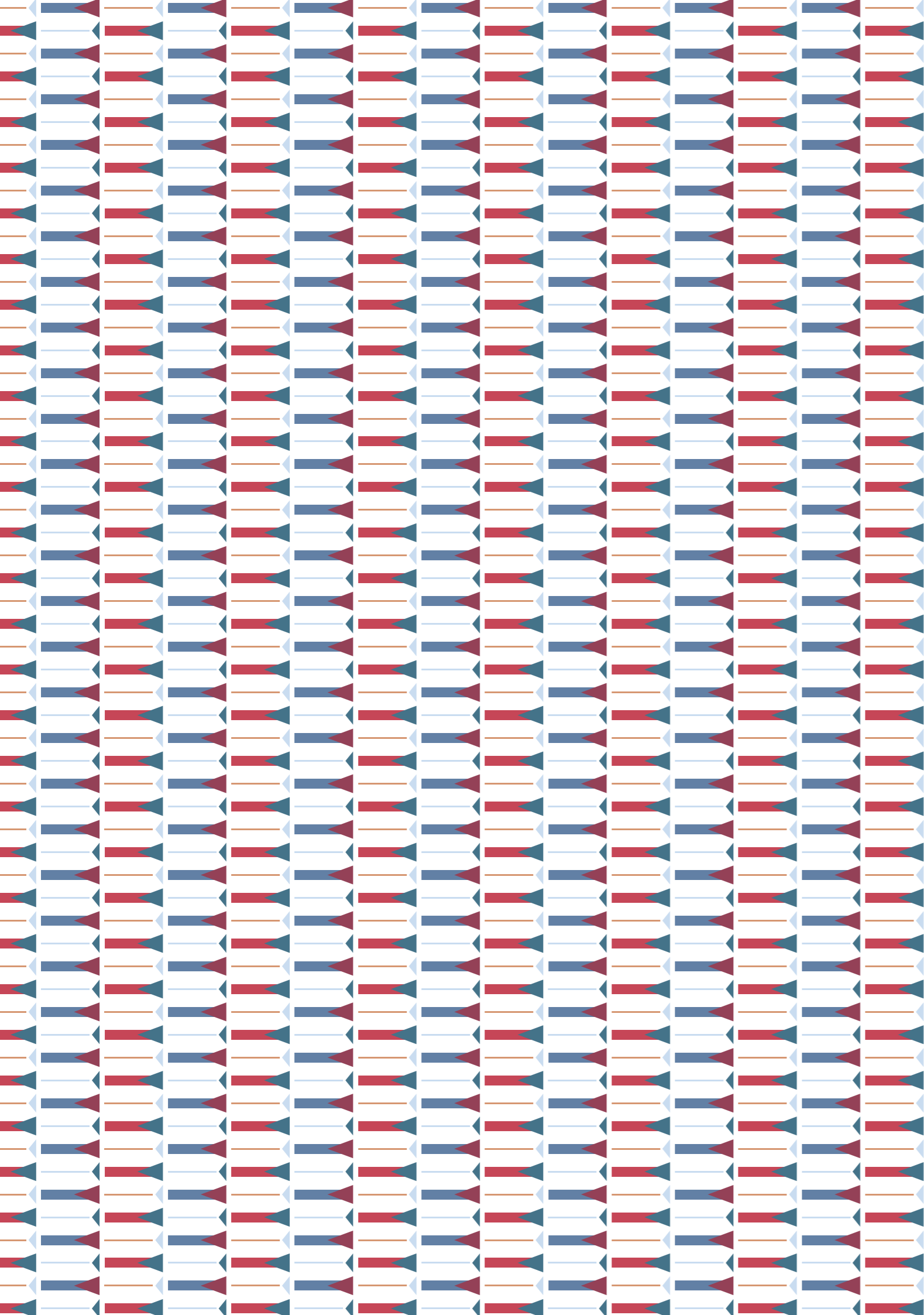


TAPIS ROUGE



TAPIS ROUGE

CONTENT

Tapis Rouge is an iconic custom-tailored design brand for fine rugs, bringing the concept of on-trend design together with superior quality of textures and materials.

Every our rug is a unique piece of arts and craftsmanship that creates special sense of luxury and comfort, developing the art of space, tone, rhythm and composition.

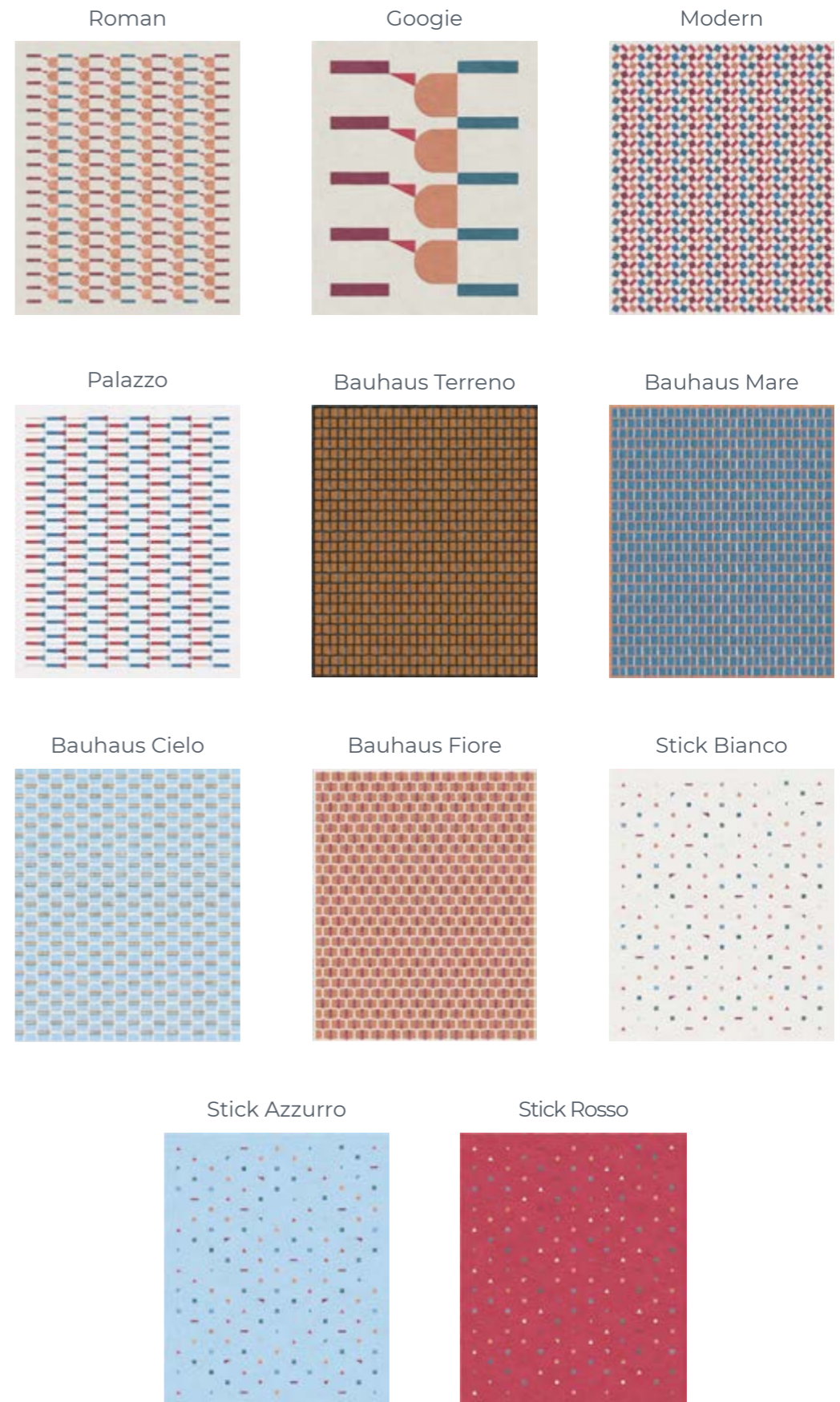
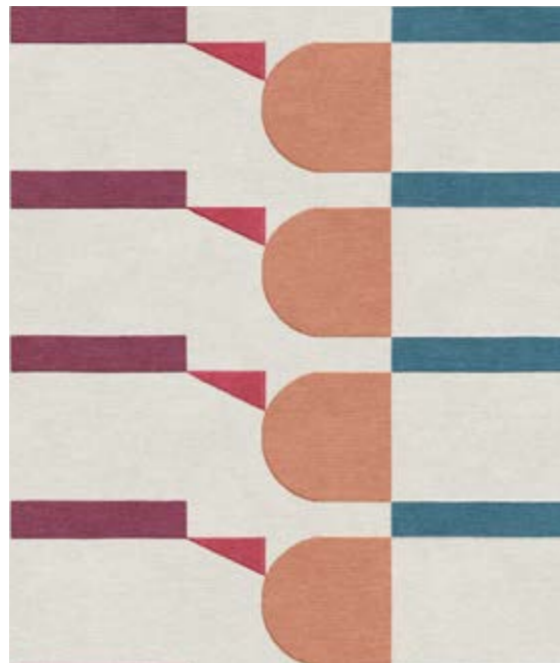


ateliertapisrouge.com

Pattern		04 - 11
Elettrico		12 - 21
Eco Collection		22 - 35
Abstraction		36 - 59
Val Camonica		60 - 69
Frozen		70 - 81
Ambiance		82 - 113
Fabulous		114 - 125
Per Sempre		126 - 141
La Scala		142 - 157
Koi Pond		158 - 161
Himalaya		162 - 175
Maison Six		176 - 185
Sinfonia		186 - 193
Modern Classics		194 - 207
Dentelle		208 - 213
Chinoiserie		214 - 235
Archive		236 - 247

TAPIS ROUGE

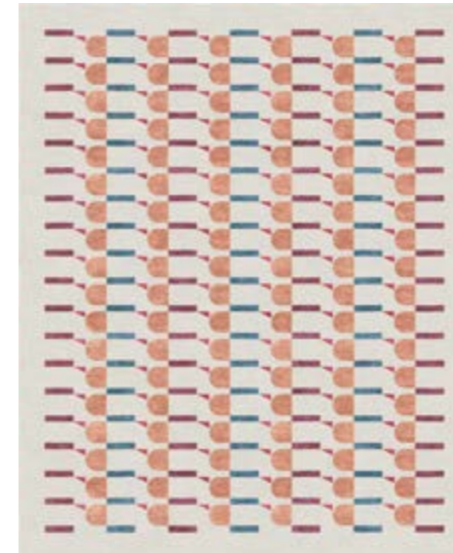
PATTERN





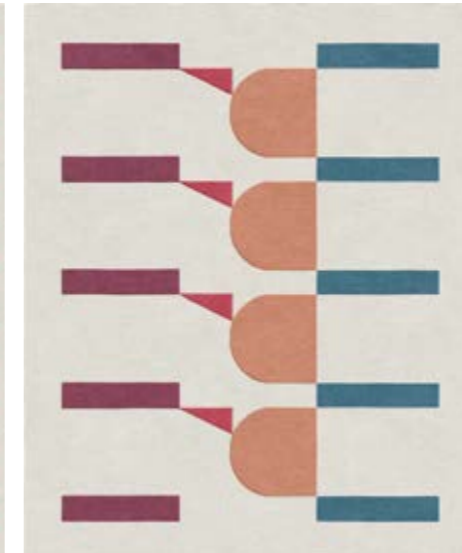
Art.: TR 1990

Roman



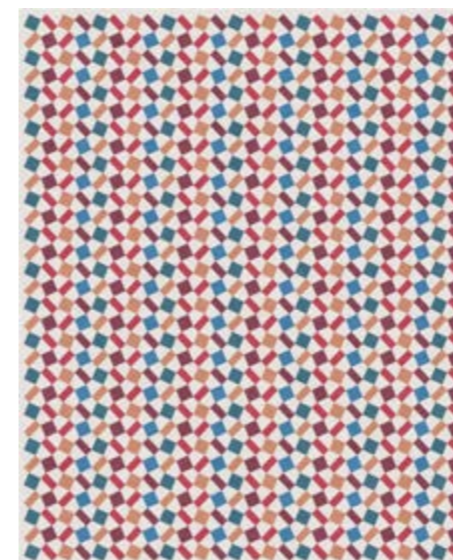
Art.: TR 1989

Googie



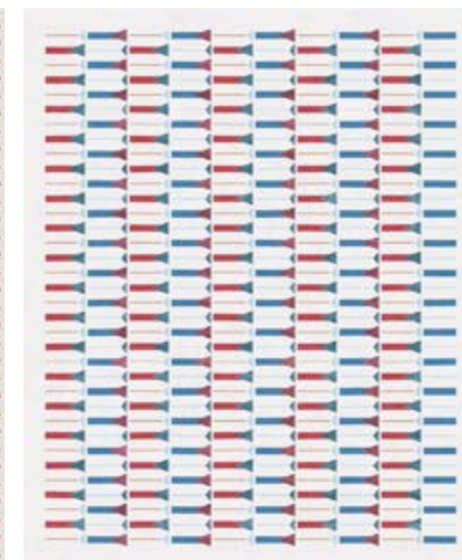
Art.: TR 1990

Modern



Art.: TR 1991

Palazzo



Art.: TR 1992

Hand-knotted
wool & silk

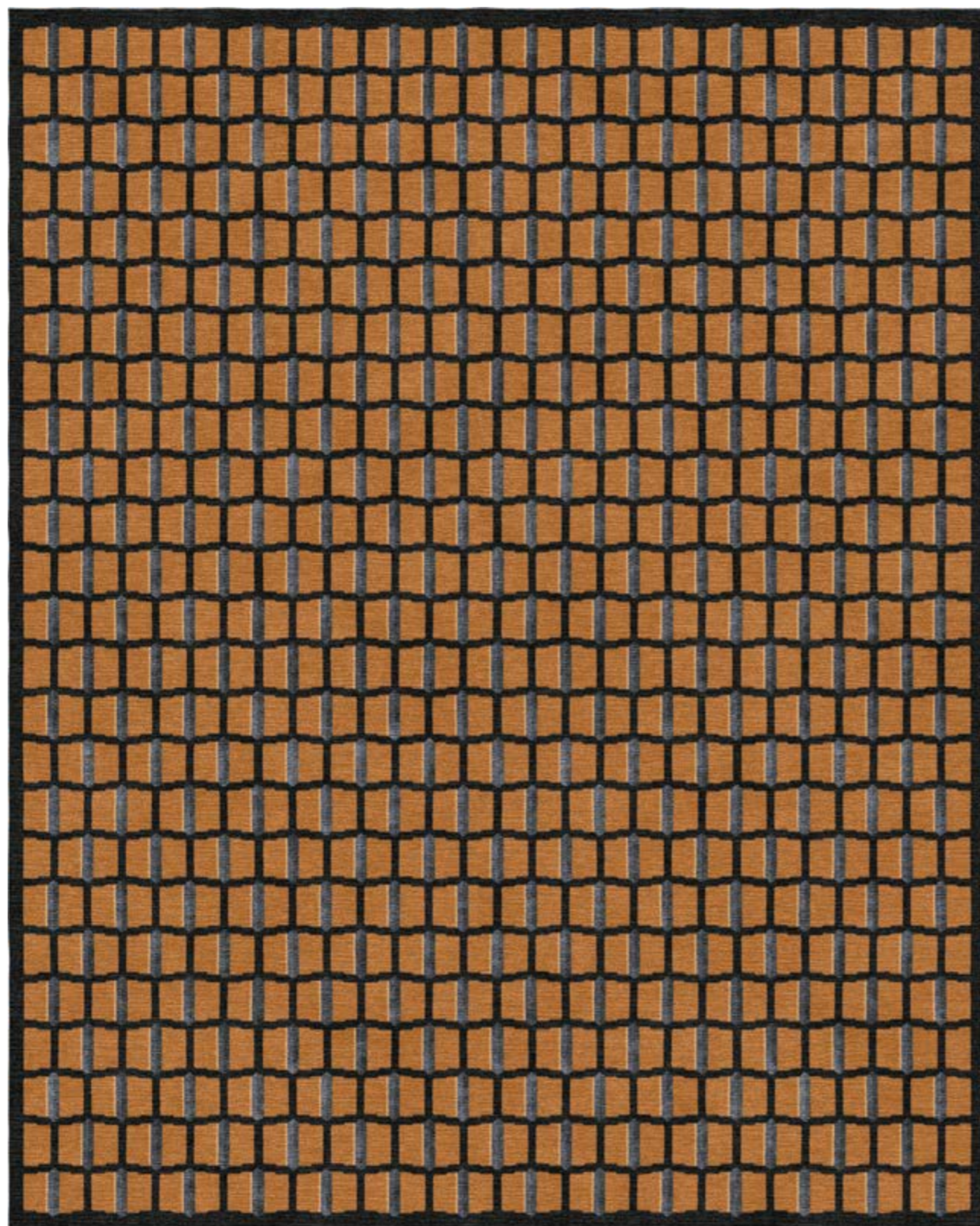
2.5 x 3.0 m
60 knots
height 6, 8 mm



Hand-knotted
wool & silk

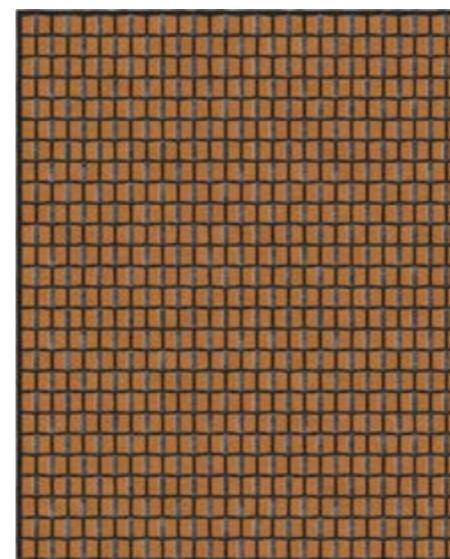
2.5 x 3.0m
60 knots
height 6 mm





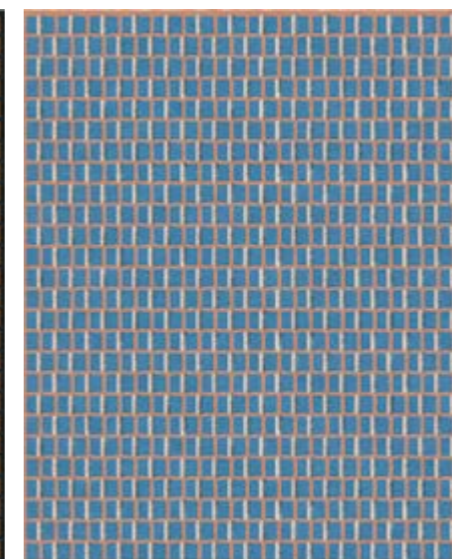
Art.: TR 1993

Bauhaus Terreno



Art.: TR 1993

Bauhaus Mare



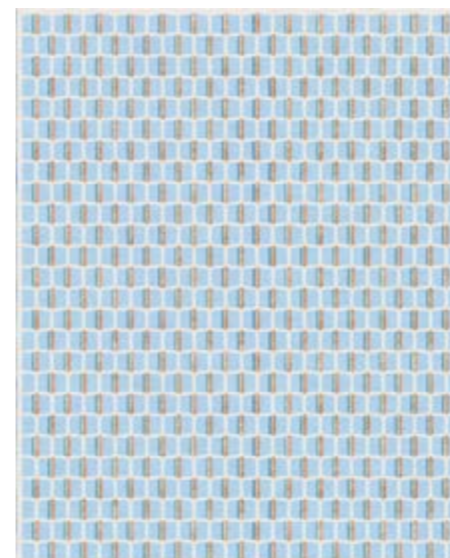
Art.: TR 1994

Hand-knotted
wool & silk

2.5 x 3.0 m
60 knots
height 6 mm

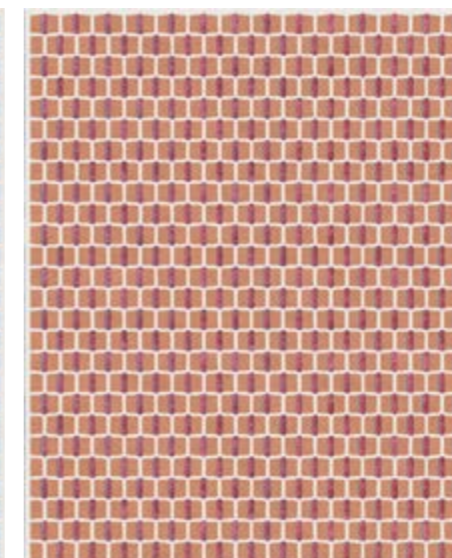


Bauhaus Cielo



Art.: TR 1995

Bauhaus Fiore



Art.: TR 1996

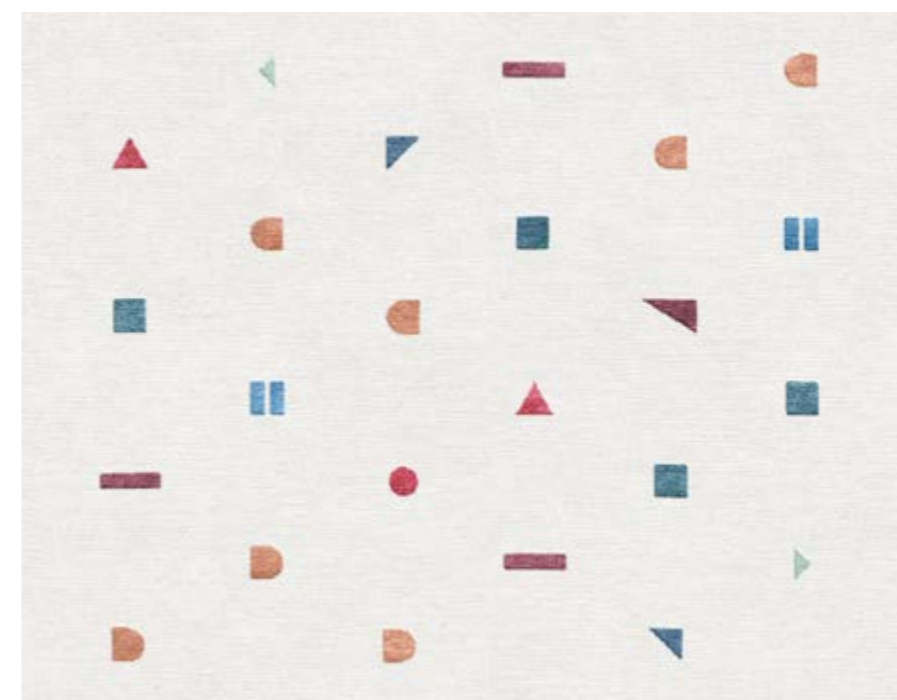
Hand-knotted
wool & silk

2.5 x 3.0m
60 knots
height 6 mm





Art.: TR 1997



Art.: TR 1997

Hand-knotted
wool & silk

2.5 x 3.0 m
60 knots
height 6, 8 mm



Stick Bianco



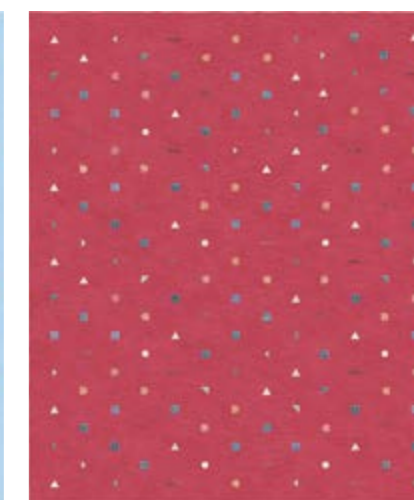
Art.: TR 1997

Stick Azzurro



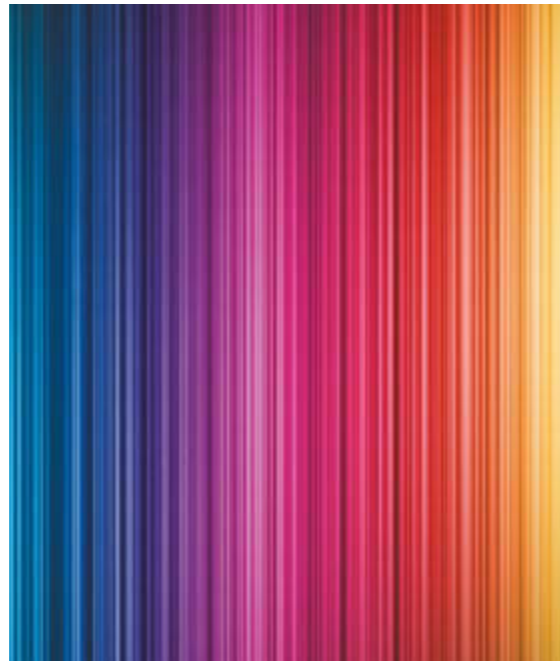
Art.: TR 1998

Stick Azzurro



Art.: TR 1999

ELETTRICO



Laser Mercury



Laser Sun



Laser Mars



Laser Earth



Laser Venus



Gamma Orient



Gamma Est



Gamma Nord



Gamma Sud



SpaceX



Space Odity



Solaris



Magnetic Soil



Magnetic Rock





Art.: TR 1971

Gamma Nord



Art.: TR 1971

Gamma Sud



Art.: TR 1972

Gamma Orient



Art.: TR 1973

Gamma Est



Art.: TR 1974

Hand-knotted
wool 100%

1.7 x 2 m
2.21 x 2.6 m
60 knots
height 6, 8 mm



Hand-knotted
wool 100%

1.7 x 2 m
2.21 x 2.6 m
60 knots
height 6, 8 mm





Laser Mars



Art.: TR 1967

Laser Venus



Art.: TR 1968

Hand-knotted
wool & silk

1.6 x 2 m
2.16 x 2.7 m
60 knots
height 2, 16 mm



Laser Sun



Art.: TR 1966

Laser Earth



Art.: TR 1969

Laser Mercury



Art.: TR 1970

Hand-knotted
wool 100%

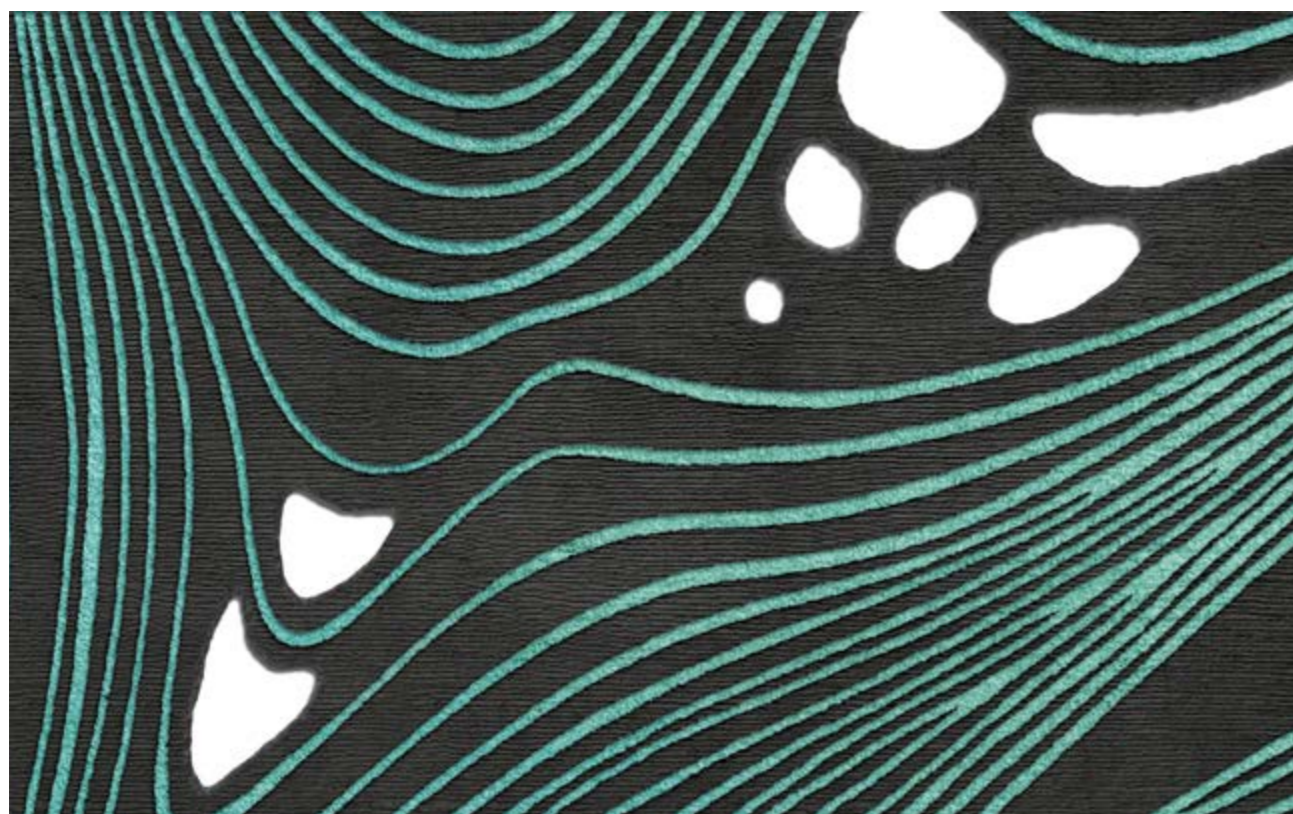
1.6 x 2 m
2.16 x 2.7 m
60 knots
height 2, 16 mm



Hand-knotted
wool 100%

1.6 x 2 m
2.16 x 2.7 m
60 knots
height 2, 16 mm

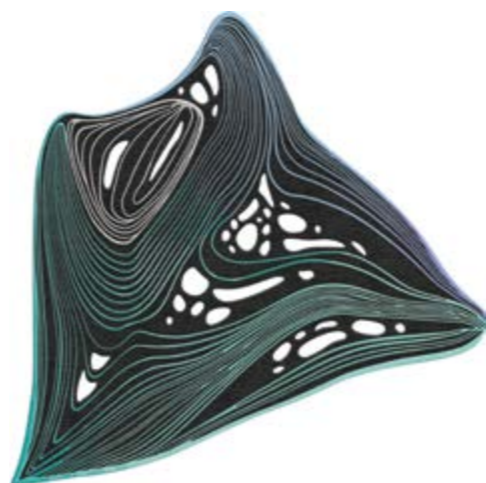




Solaris

Hand-knotted
wool 100%

2 x 1.92 m
2.5 x 2.4 m
60 knots
height 6, 8 mm



Art.: TR 1977

Spacex



Art.: TR 1975

Space Odity



Art.: TR 1976

Hand-knotted
wool 100%

1.8 x 1.38 m
2.6 x 2 m
60 knots
height 6, 8 mm



Hand-knotted
wool & silk

1 x 1.85 m
60 knots
height 6 mm



Magnetic Soil



Art.: TR 1979

Magnetic Rock



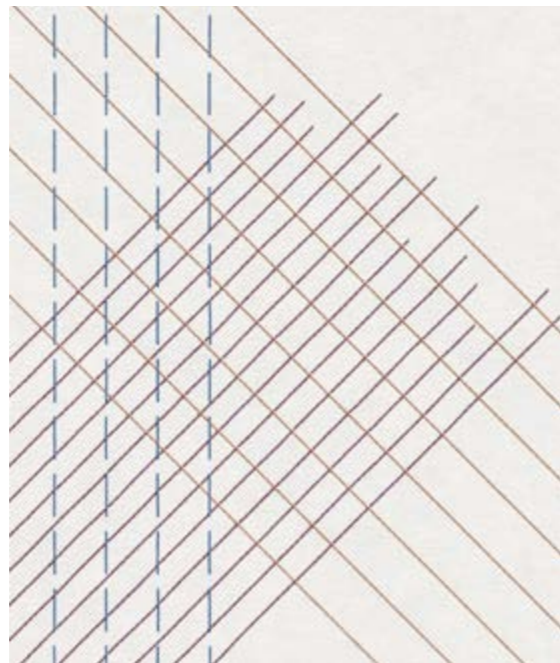
Art.: TR 1978

Hand-knotted
wool & silk

1 x 1.85 m
60 knots
height 6 mm



ECO COLLECTION



Sardinia



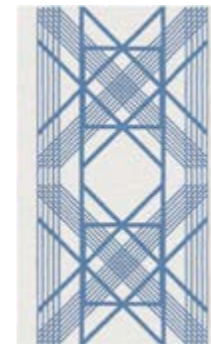
St. Barts Moon



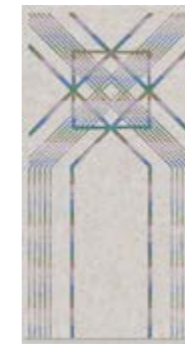
St. Barts Sun



Bali Coast



Bali Sand



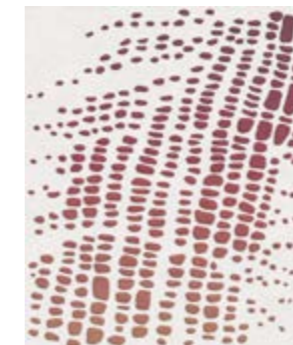
Bali Wave



Santorini Night



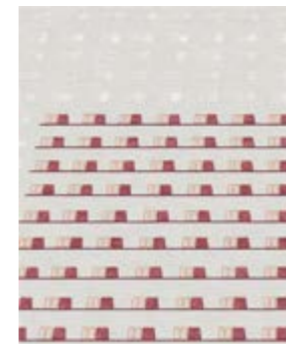
Santorini Shade



Santorini Light



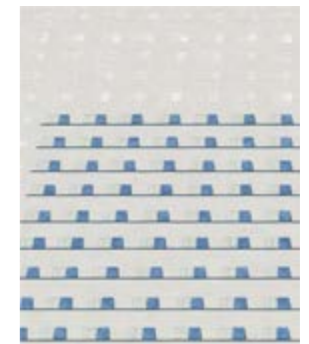
Cuba Libre



Cuba Tabacco



Cuba Salsa





Art.: TR 2016

Bora Bora Night



Art.: TR 2014

Bora Bora Sunset



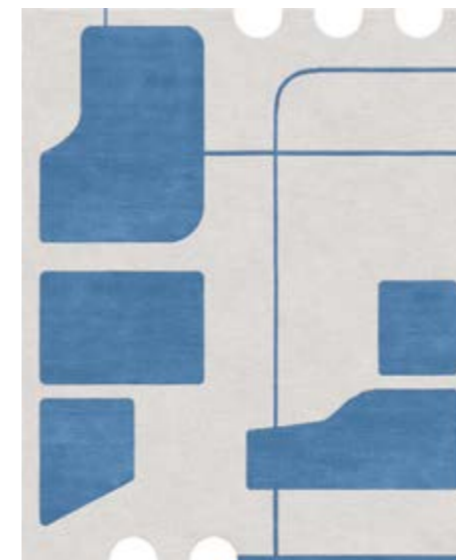
Art.: TR 2015

Hand-knotted
wool 100%

2.5 x 3.0 m
60 knots
height 6, 8 mm



Bora Bora Heat



Art.: TR 2016

Bora Bora Morning

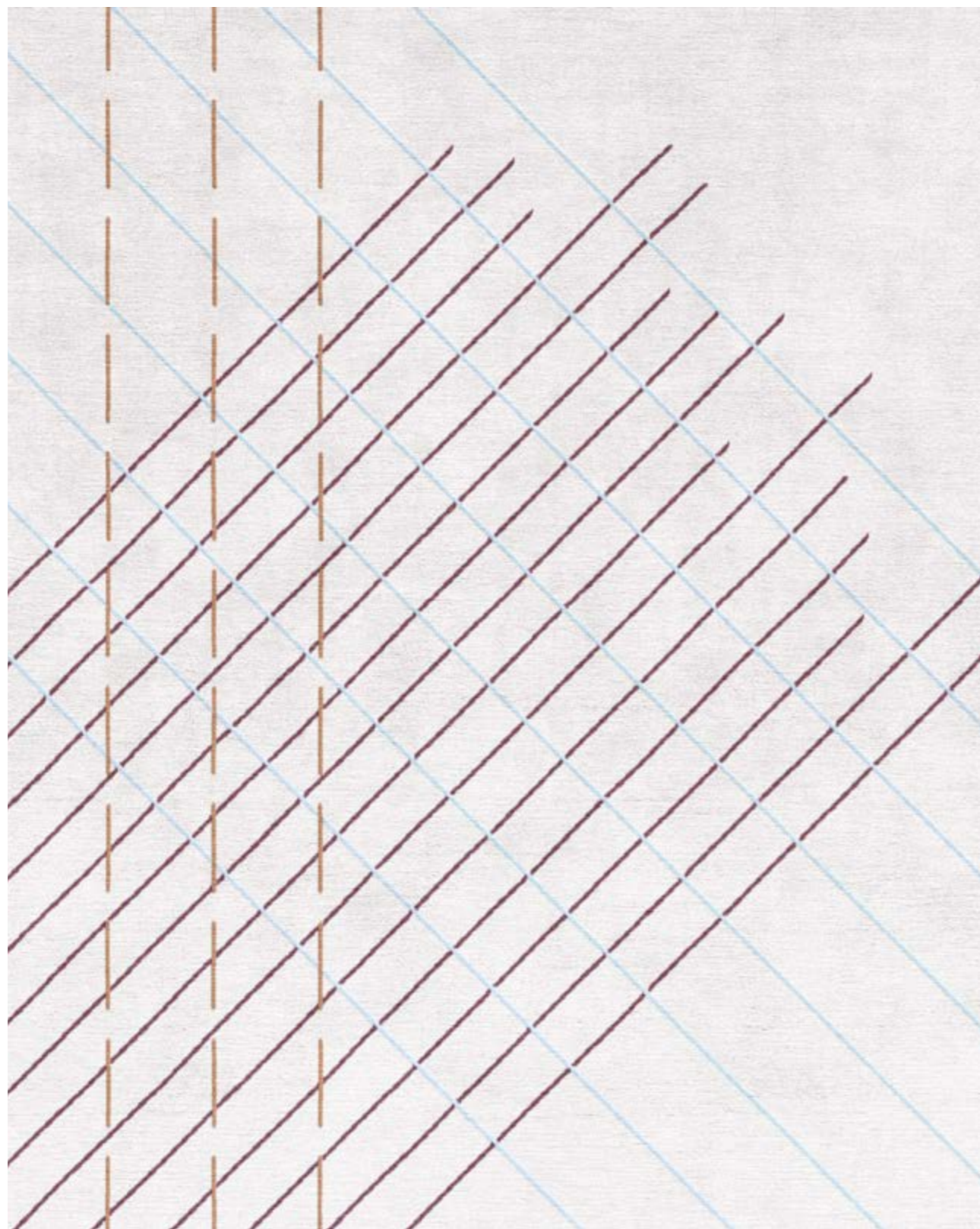


Art.: TR 2017

Hand-knotted
wool 100%

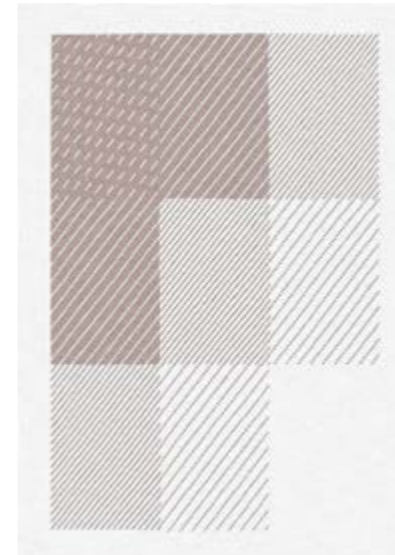
2.5 x 3.0m
60 knots
height 6, 8 mm





Art.: TR 2003

Sardinia



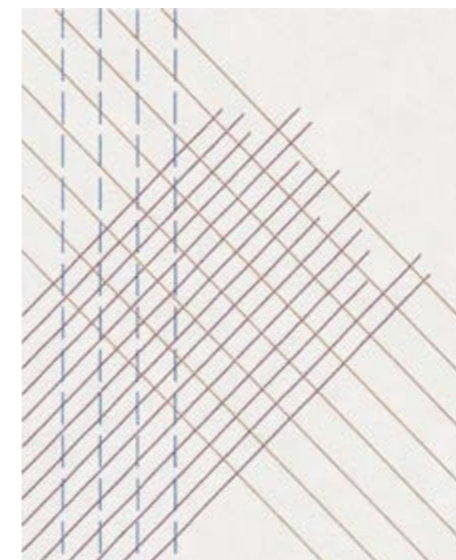
Art.: TR 2000

Sicily



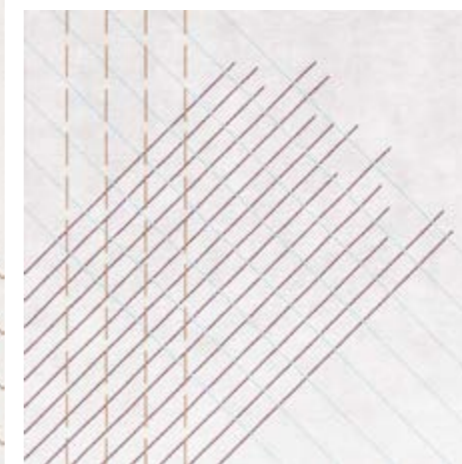
Art.: TR 2001

St. Barts Moon



Art.: TR 2002

St. Barts Sun



Art.: TR 2003

Hand-knotted
wool 100%

2.1 x 2.9 m
2.5 x 3.0 m
60 knots
height 6, 8 mm



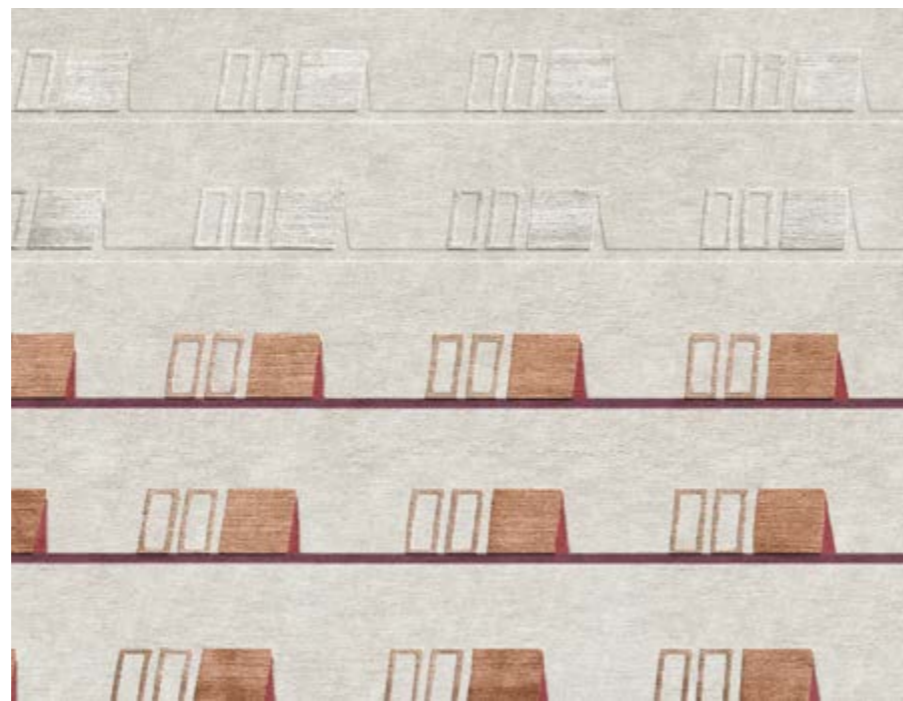
Hand-knotted
wool 100%

2.5 x 3.0m
2.0 x 2.0m
60 knots
height 6, 8 mm

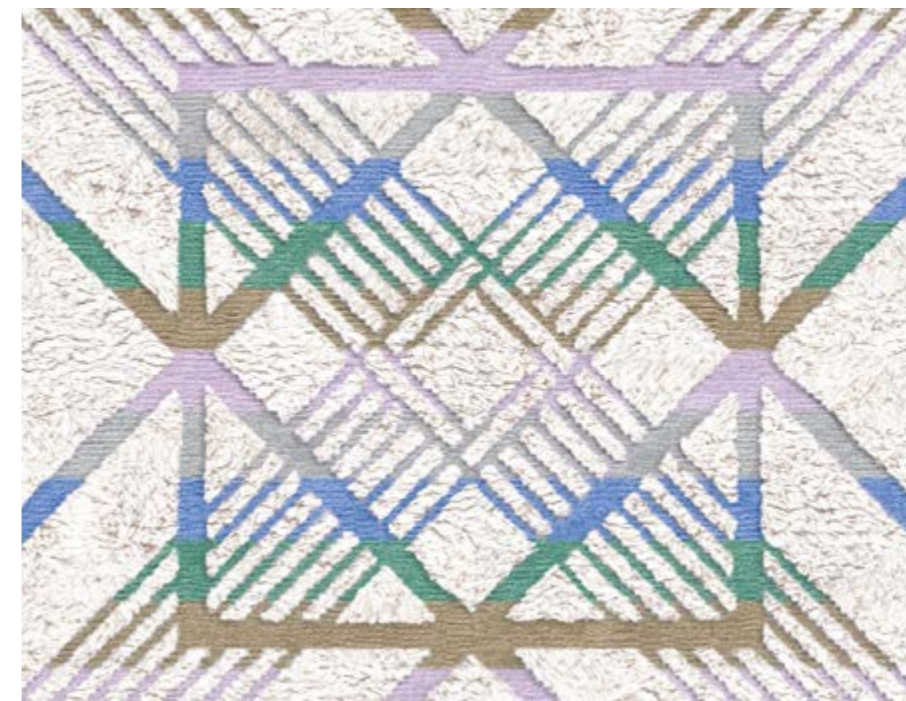


Hand-knotted
wool, silk & allo

2.5 x 3.0 m
60 knots
height 4, 6, 8
mm



Art.: TR 2012



Art.: TR 2005

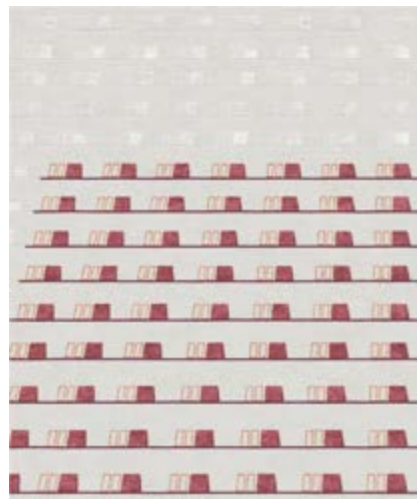
Hand-knotted
wool 100%

1.24 x 2.0 m
1.06 x 2.0 m

60 knots
height 4, 10 mm

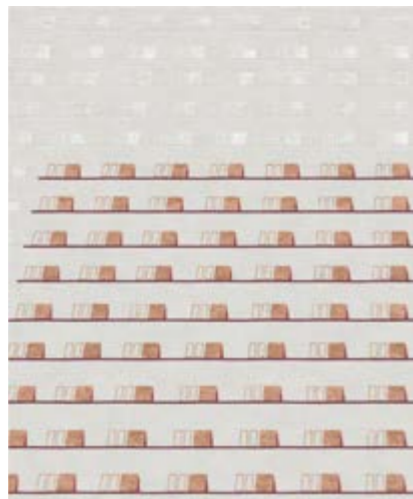


Cuba Libre



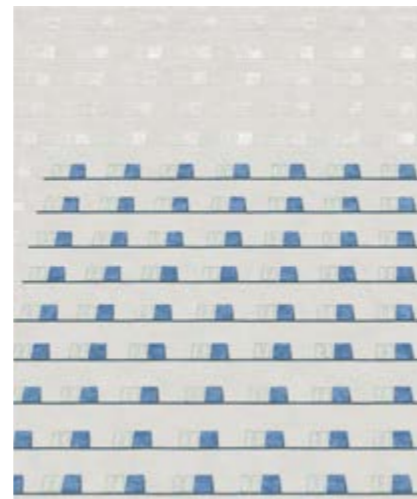
Art.: TR 2011

Cuba Tabacco



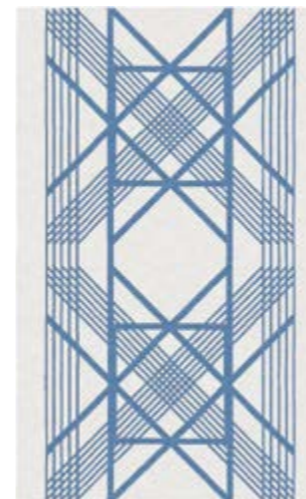
Art.: TR 2012

Cuba Salsa



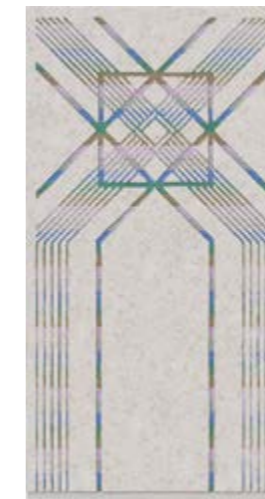
Art.: TR 2013

Bali Coast



Art.: TR 2004

Bali Sand



Art.: TR 2005

Bali Wave

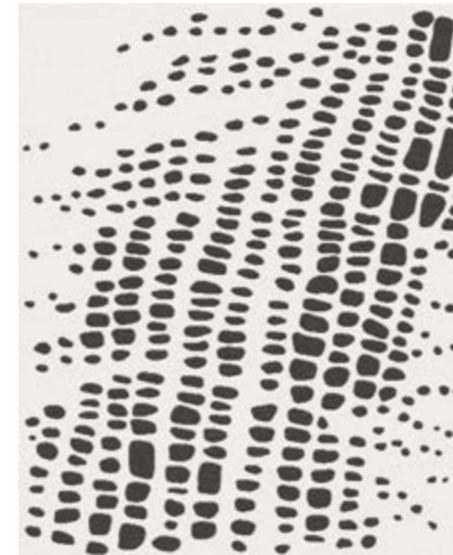


Art.: TR 2006



Art.: TR 2010

Santorini Night



Art.: TR 2007

Santorini Shade



Art.: TR 2008

Santorini Storm



Art.: TR 2009

Santorini Light



Art.: TR 2010

Hand-knotted
wool & silk

2.5 x 3.0 m
60 knots
height 6, 8 mm



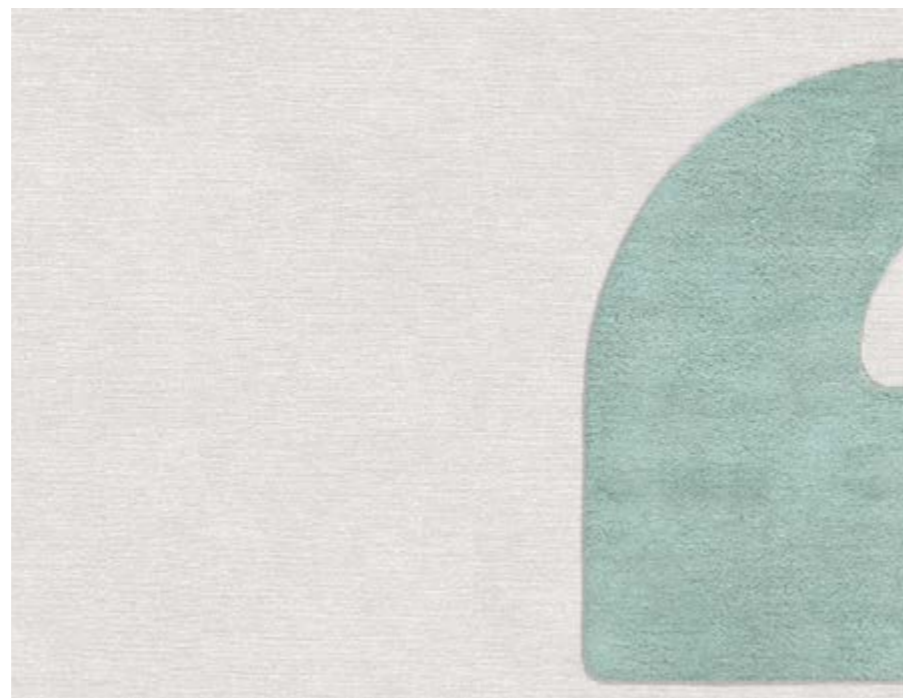
Hand-knotted
wool & silk

2.5 x 3.0m
60 knots
height 6, 8 mm

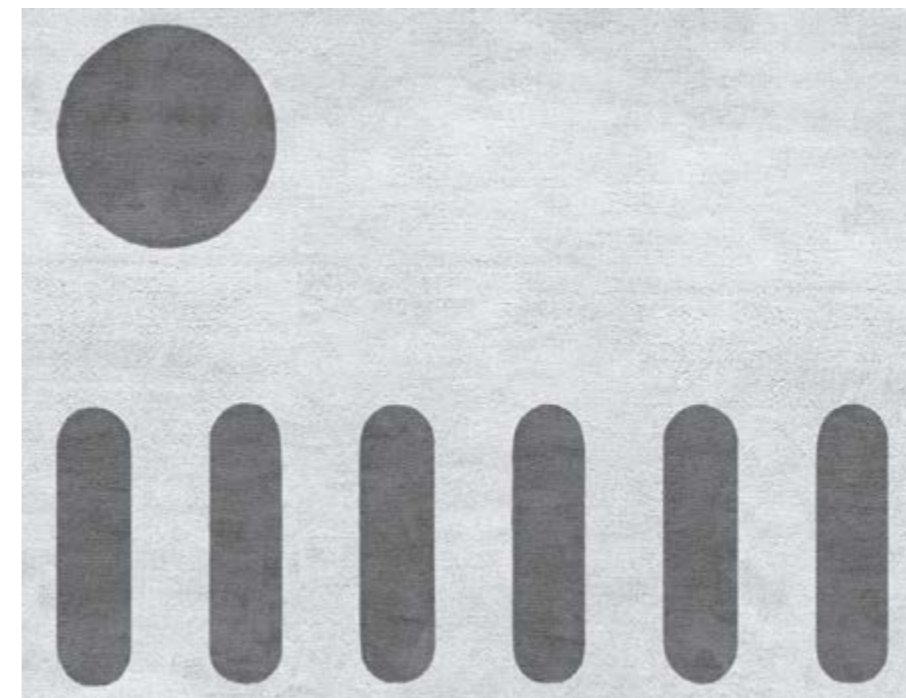


Hand-knotted
wool 100%

2.5 x 3.0 m
60 knots
height 6, 8 mm



Art.: TR 2024



Art.: TR 2019

Hand-knotted
wool 100%

2.5 x 3.0 m
60 knots
height 6, 8 mm



Hawaii Morning



Art.: TR 2022

Hawaii Night



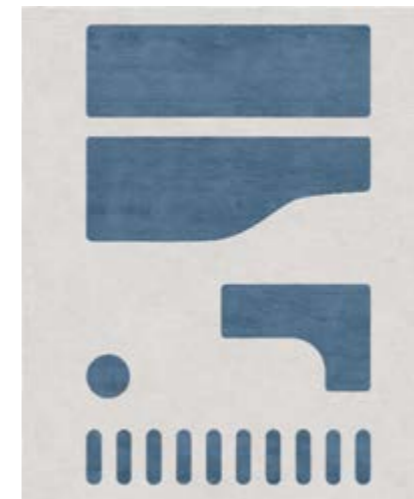
Art.: TR 2023

Hawaii Heat



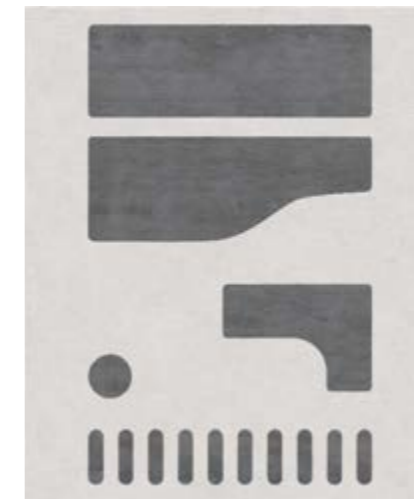
Art.: TR 2024

Tasmania Earth



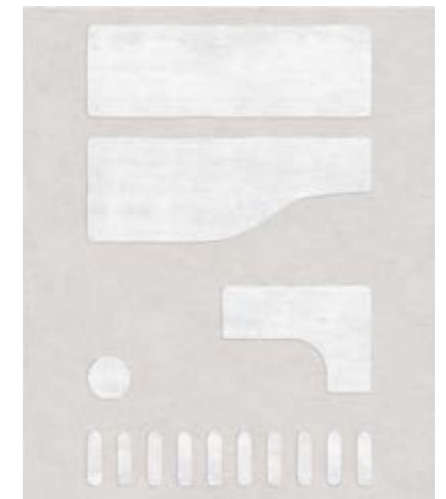
Art.: TR 2018

Tasmania Rock



Art.: TR 2019

Tasmania Cloud



Art.: TR 2021

Hand-knotted
wool 100%

2.5 x 3.0 m
60 knots
height 6, 8 mm



Seychelles Morning



Art.: TR 2029

Seychelles Cool



Art.: TR 2030

Fiji



Art.: TR 2025

Capri Wind



Art.: TR 2026

Hand-knotted
wool 100%

2.5 x 3.0 m
60 knots
height 6, 8 mm



Seychelles Sunset



Art.: TR 2031

Seychelles Night



Art.: TR 2032

Hand-knotted
wool 100%

2.5 x 3.0m
60 knots
height 6, 8 mm



Capri Earth



Art.: TR 2027

Capri Fire



Art.: TR 2028

Hand-knotted
wool 100%

2.5 x 3.0m
60 knots
height 6, 8 mm



ABSTRACTION



Composition XXII



Composition XXI



Composition XVIII



Composition XVII



Composition XIX



Composition XX



Composition VII



Composition XV.II



Composition XIV.I



Composition XIV.II



Composition X.II



Composition V





Composition XXII

Hand-knotted
wool & silk

1.5 x 2.45 m

2.5 x 3.0 m

2.7 x 3.6 m

3.0 x 4.0 m

60 knots

height 5, 7 mm

Art.: TR 1761





Composition XXI

Hand-knotted
wool

1.5 x 2.45 m
 2.5 x 3.0 m
 2.7 x 3.6 m
 3.0 x 4.0 m
 60 knots
 height 7 mm

Art.: TR 1760





Composition XVIII

Hand-knotted
wool & silk

1.5 x 2.45 m
 2.5 x 3.0 m
 2.7 x 3.6 m
 3.0 x 4.0 m
 60 knots
 height 6, 8 mm

Art.: TR 1758





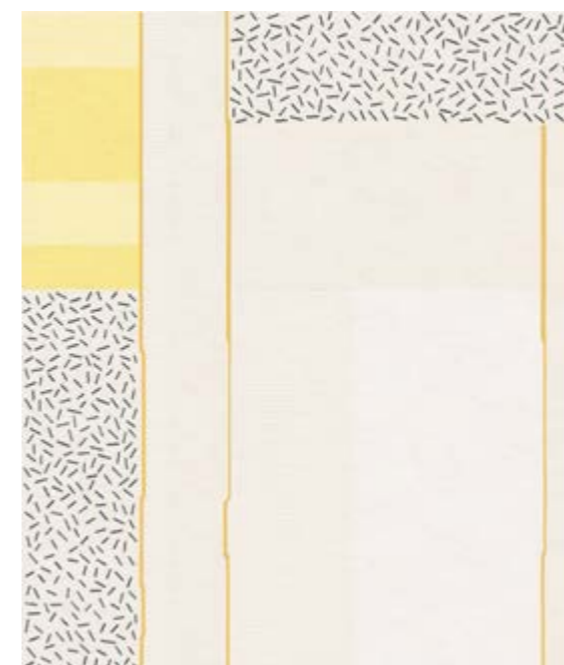
Composition XVII

Hand-knotted
wool & silk

1.5 x 2.45 m
 2.5 x 3.0 m
 2.7 x 3.6 m
 3.0 x 4.0 m
 60 knots
 height 6, 8 mm



Art.: TR 1757



Composition XIX

Hand-knotted
wool & silk

1.5 x 2.45 m
 2.5 x 3.0 m
 2.7 x 3.6 m
 3.0 x 4.0 m
 60 knots
 height 4, 6 mm

Art.: TR 1765





TAPIS ROUGE



Composition VII

Hand-knotted
wool, silk & hard
metallic yarn

D = 2.7 m
D = 3.0 m
100 knots
height 3, 5, 7 mm



Art.: TR 1299

TAPIS ROUGE

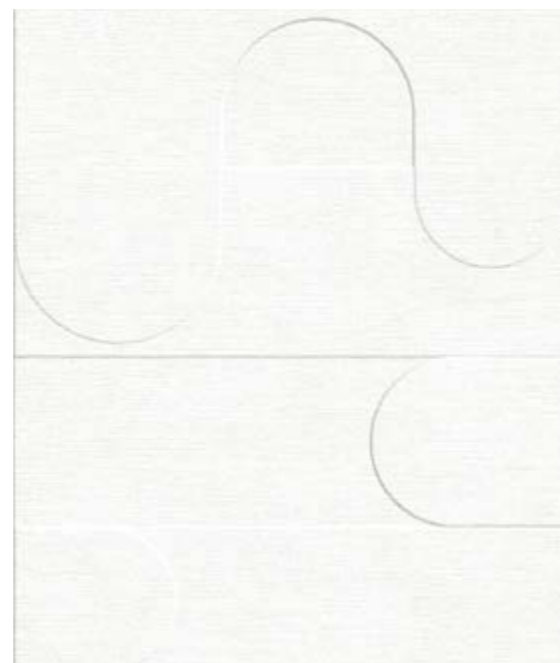


Composition XX

Hand-knotted
wool

1.5 x 2.45 m
2.5 x 3.0 m
2.7 x 3.6 m
3.0 x 4.0 m
60 knots
height 6, 10, 15 mm

Art.: TR 1759

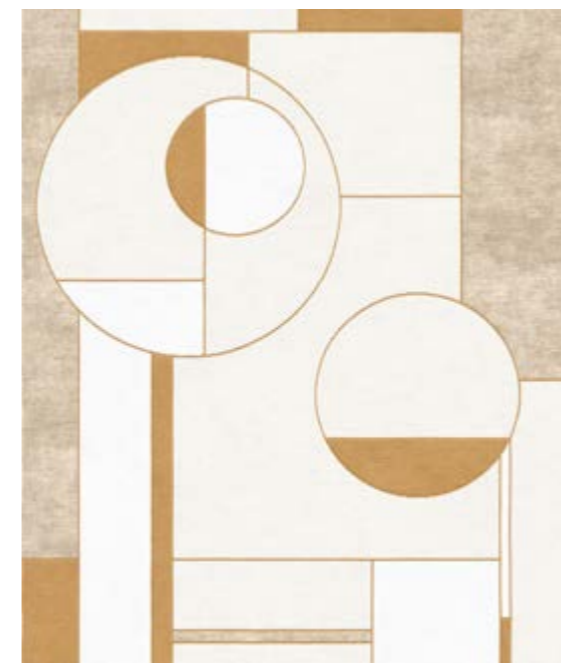


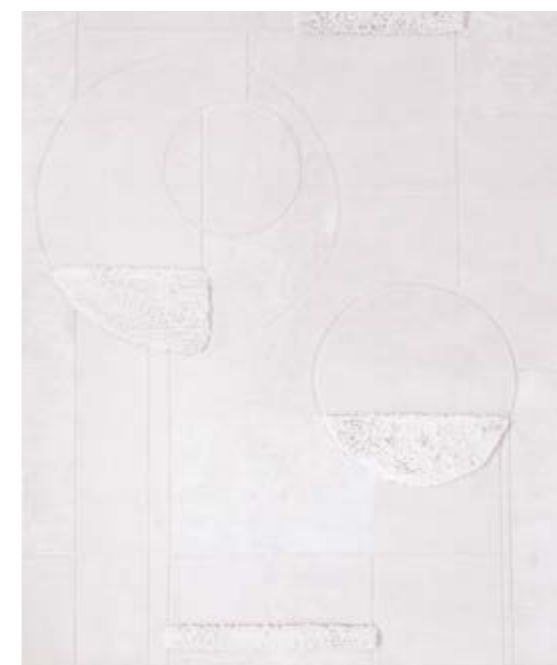
Composition XIV.I

Hand-knotted
wool & silk

1.5 x 2.45 m
2.5 x 3.0 m
2.7 x 3.6 m
3.0 x 4.0 m
60 knots
height 4, 6 mm

Art.: TR 1750





Composition XIV.II

Hand-knotted
wool & silk

1.5 x 2.45 m
2.5 x 3.0 m
2.7 x 3.6 m
3.0 x 4.0 m
60 knots
height 3, 5, 7, 30 mm



Art.: TR 1751



Art.: TR 1766



Art.: TR 1754

Composition XV.II



Art.: TR 1766

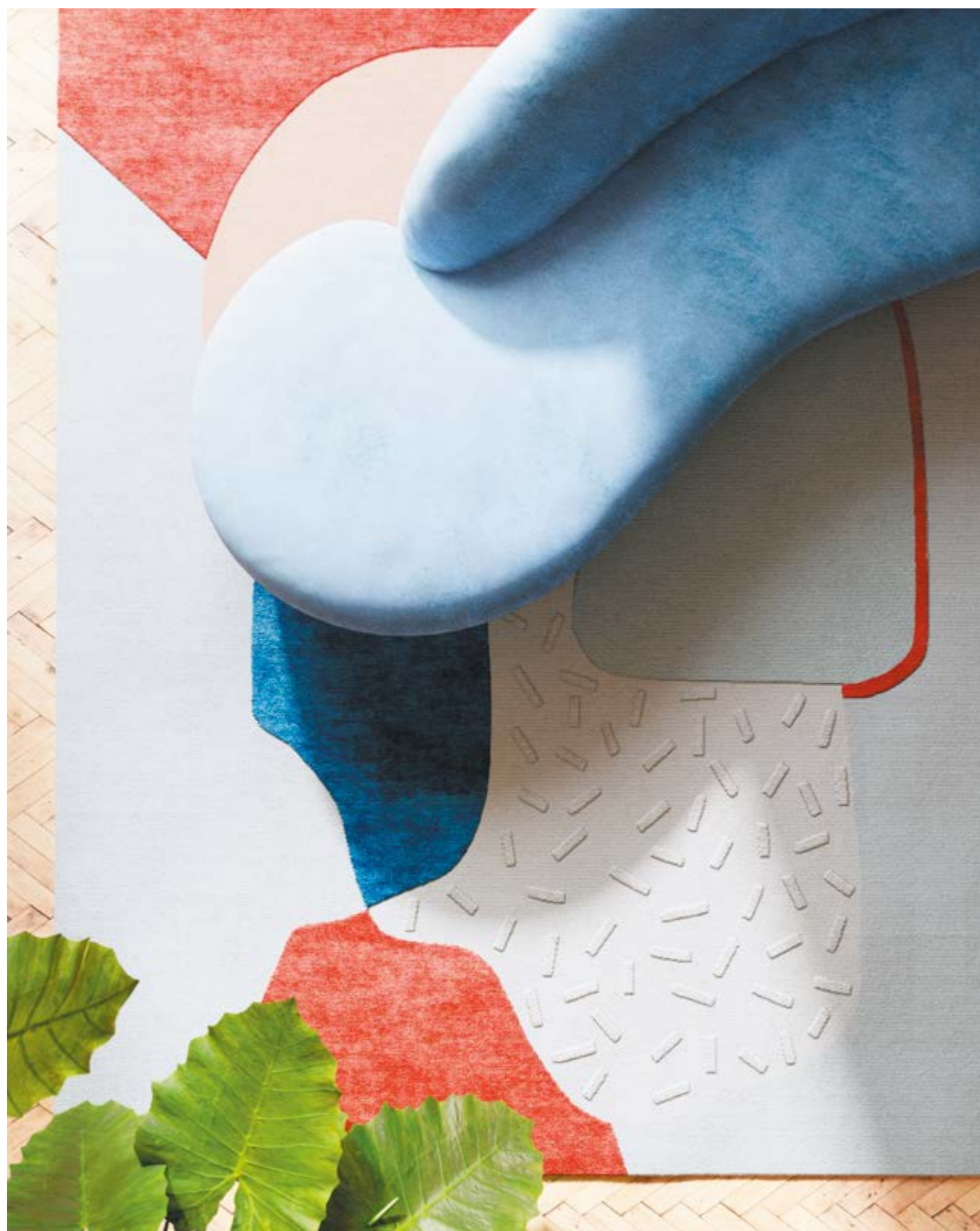
Composition XV.III



Art.: TR 1754

Hand-knotted
 wool, silk
 & metallic yarn
 1.5 x 2.45 m
 2.5 x 3.0 m
 2.7 x 3.6 m
 3.0 x 4.0 m
 60 knots
 height 4, 6, 8 mm





Art.: TR 1302



Art.: TR 1745

Composition X



Art.: TR 1302

Composition X.II



Art.: TR 1745

Hand-knotted
 wool, silk & hard
 metallic yarn

1.5 x 2.45 m
 2.5 x 3.0 m
 2.7 x 3.6 m
 3.0 x 4.0 m

100 knots
 height 4, 6, 8 mm





Art.: TR 1297



Art.: TR 1744

Composition V

Composition V.II



Art.: TR 1297



Art.: TR 1744

Hand-knotted
wool & silk

1.5 x 2.45 m
 2.5 x 3.0 m
 2.7 x 3.6 m
 3.0 x 4.0 m
 100 knots
 height 4, 6 mm



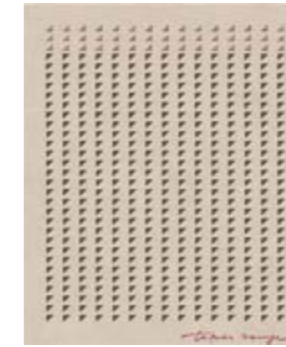
VAL CAMONICA



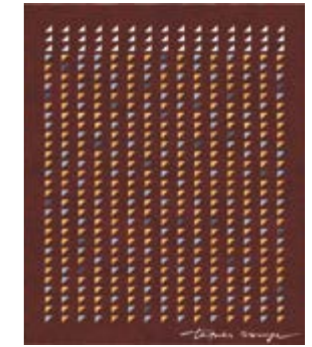
Sellero Grigio Chiaro



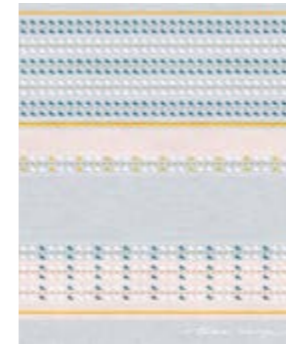
Sellero Tortora



Sellero Marrone



Sonico Grigio



Sonico Tortora



Sonico Blue Notte



Boarrio Oro



Boarrio Oliva



Boarrio Aquamarina



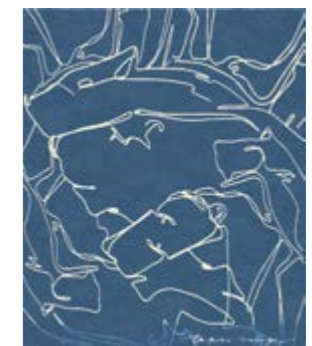
Darfo Azzurro



Darfo Grigio Fume



Darfo Blue Notte





Art.: TR 1716



Art.: TR 1717

Hand-knotted
wool & blend silk

1.5 x 2.45 m
2.5 x 3.0 m
2.7 x 3.6 m
3.0 x 4.0 m
60 knots
height 6, 9 mm



Darfo Azzurro



Art.: TR 1717

Darfo Grigio Fume



Art.: TR 1715

Darfo Blue Notte



Art.: TR 1716



Art.: TR 1735



Art.: TR 1737

Hand-knotted
wool & blend silk

1.5 x 2.45 m
2.5 x 3.0 m
2.7 x 3.6 m
3.0 x 4.0 m
60 knots
height 4, 6 mm



Boarrío Oro



Art.: TR 1737

Boarrío Oliva



Art.: TR 1736

Boarrío Aquamarina



Art.: TR 1735



Art.: TR 1692



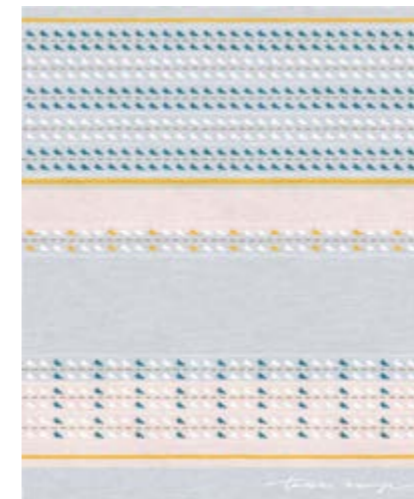
Art.: TR 1691

Hand-knotted
wool, blend silk & soya

1.5 x 2.45 m
2.5 x 3.0 m
2.7 x 3.6 m
3.0 x 4.0 m
60 knots
height 4, 5, mm

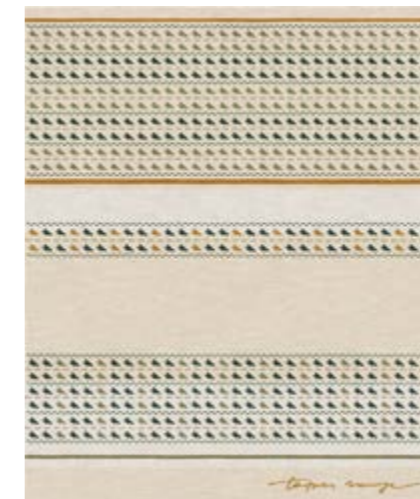


Sonico Grigio



Art.: TR 1692

Sonico Tortora



Art.: TR 1691

Sonico Blue Notte



Art.: TR 1690



Art.: TR 1719



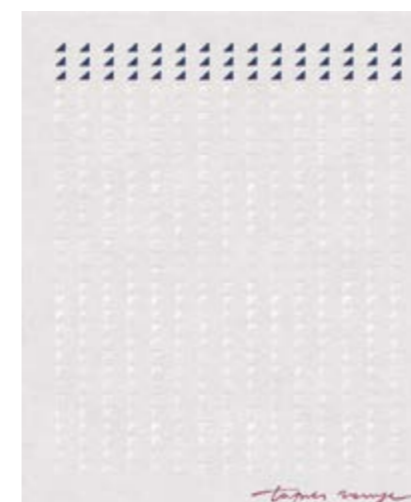
Art.: TR 1693

Hand-knotted
wool & blend silk

1.5 x 2.45 m
2.5 x 3.0 m
2.7 x 3.6 m
3.0 x 4.0 m
60 knots
height 3, 4, 5, 6, 8 mm

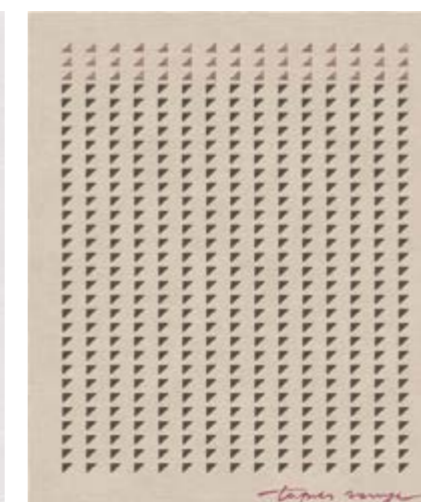


Sellero Grigio Chiaro



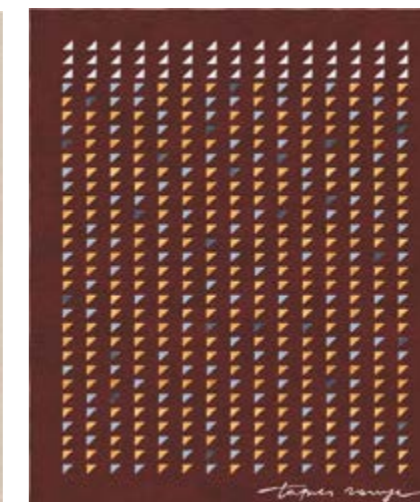
Art.: TR 1693

Sellero Tortora



Art.: TR 1719

Sellero Marrone



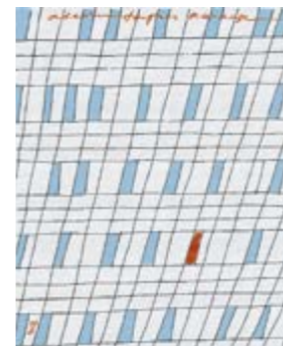
Art.: TR 1738

FROZEN



Design by Olga Malyeva

P-44



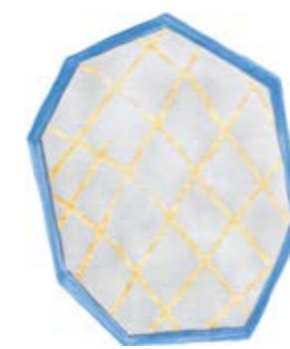
Air



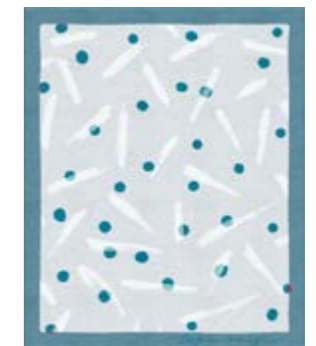
Men



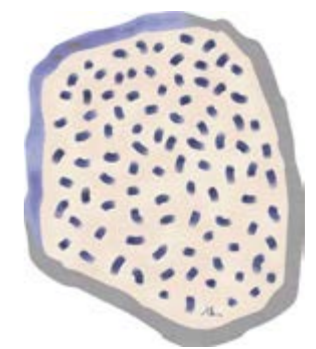
Ice



Joy

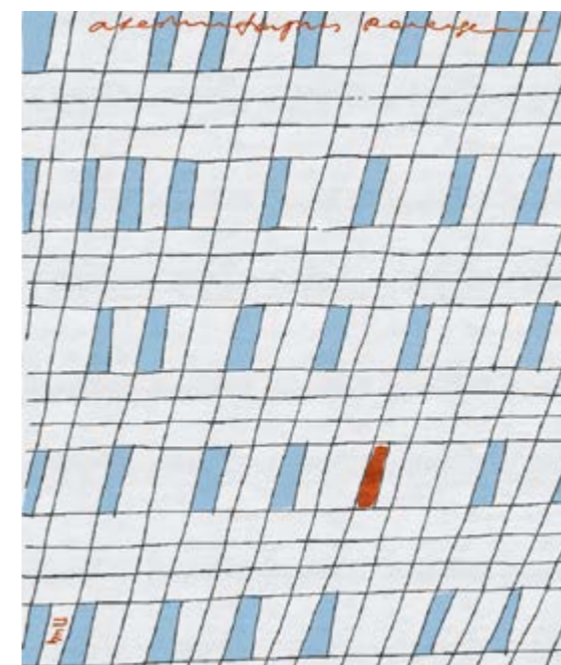


Bub





TAPIS ROUGE



P-44

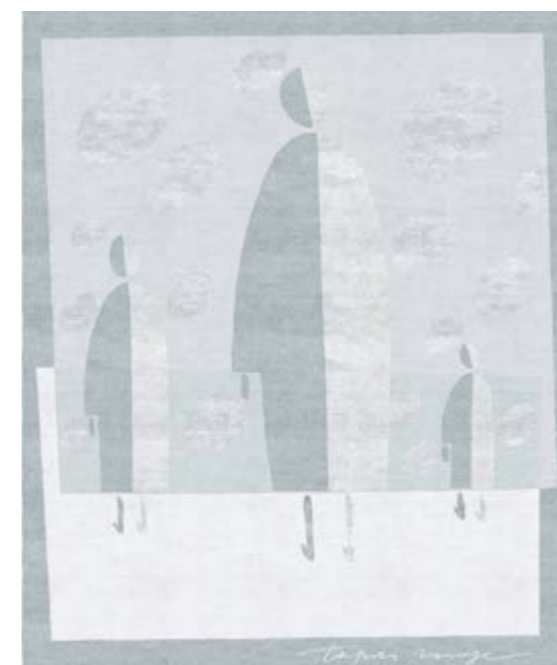
Hand-knotted
wool & silk

1.5 x 2.45 m
2.5 x 3.0 m
2.7 x 3.6 m
3.0 x 4.0 m
100 knots
height 4 mm

Art.: TR 1428



TAPIS ROUGE



Men

Hand-knotted
wool & silk

1.5 x 2.45 m
2.5 x 3.0 m
2.7 x 3.6 m
3.0 x 4.0 m
100 knots
height 6, 10 mm

Art.: TR 1439





Air

Hand-knotted
wool & silk

1.5 x 2.45 m
2.5 x 3.0 m
2.7 x 3.6 m
3.0 x 4.0 m
100 knots
height 4, 12 mm

Art.: TR 1430



Ice

Hand-knotted
wool & silk

1.5 x 2.45 m
2.5 x 3.0 m
2.7 x 3.6 m
3.0 x 4.0 m
100 knots
height 18 mm

Art.: TR 1482





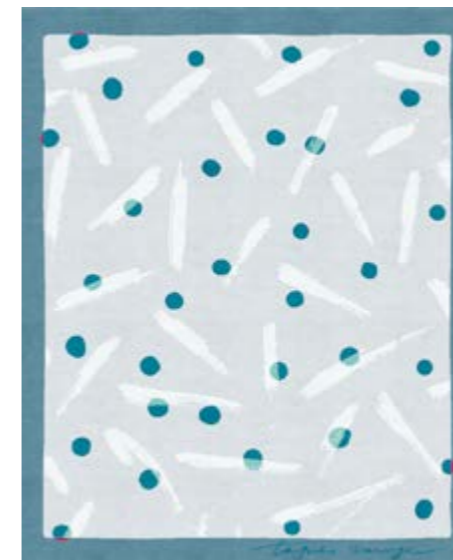
Art.: TR 1435



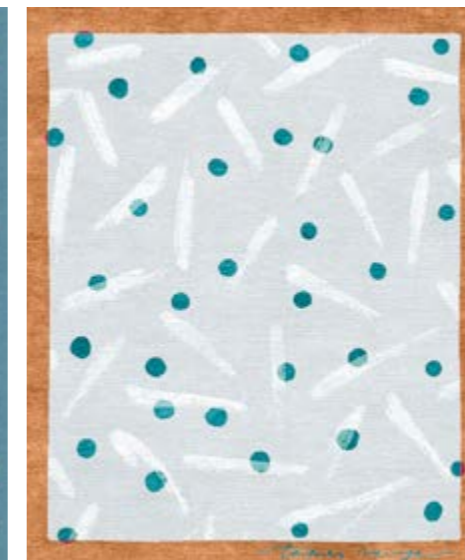
Art.: TR 1435CL

Joy

Joy Cider



Art.: TR 1435

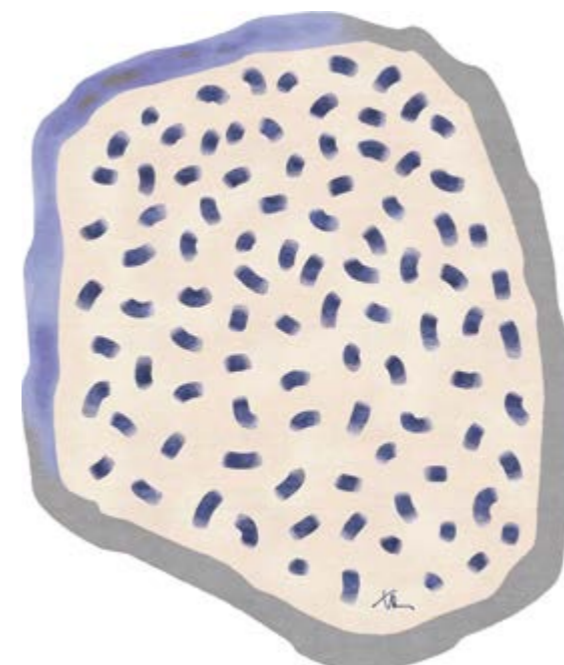
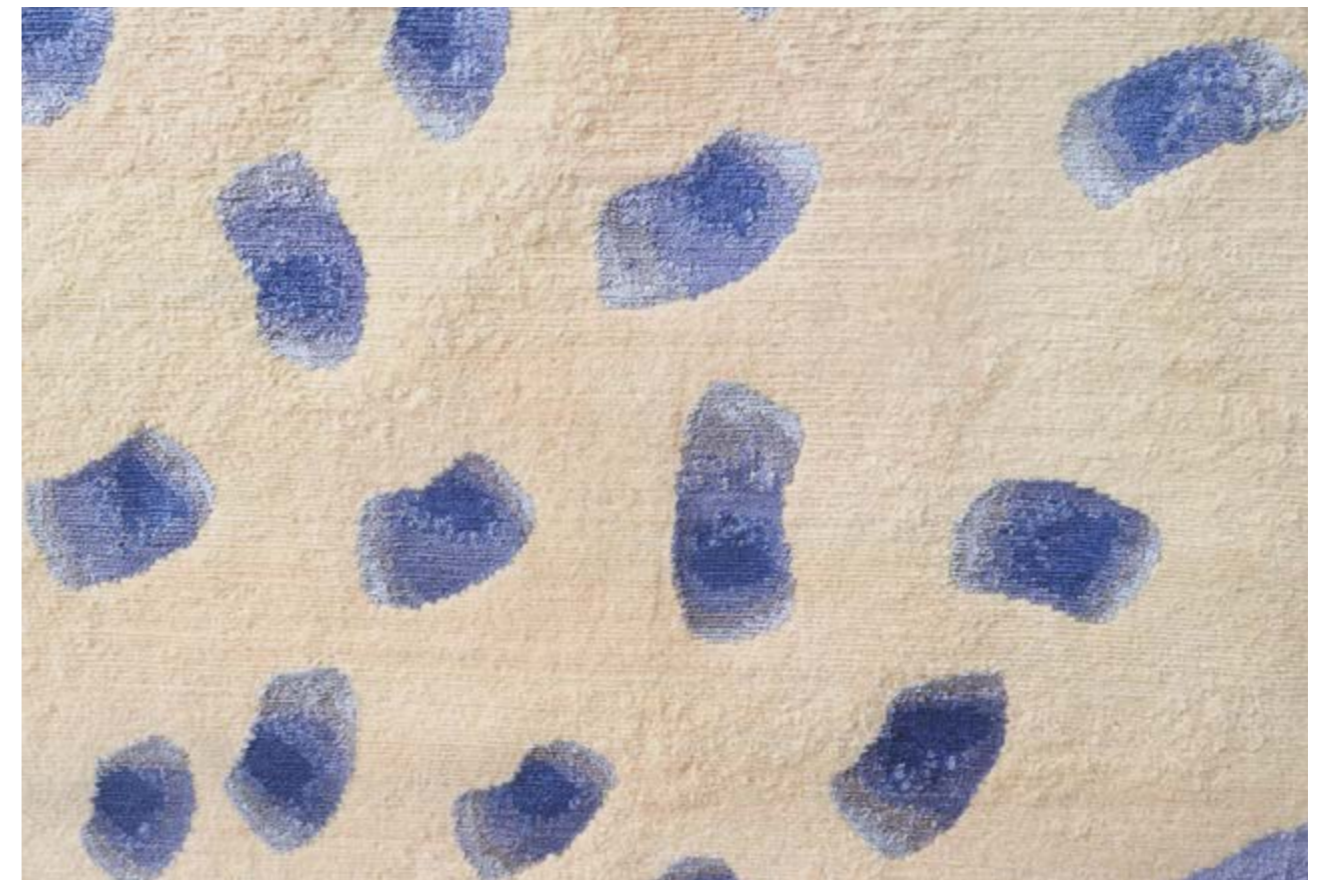


Art.: TR 1435CL

Hand-knotted
wool & silk

1.5 x 2.45m
2.5 x 3.0m
2.7 x 3.6m
3.0 x 4.0m
100 knots
height 8mm





Bub

Hand-knotted
wool & silk

1.5 x 2.45 m
 2.5 x 3.0 m
 2.7 x 3.6 m
 3.0 x 4.0 m
 100 knots
 height 8 mm

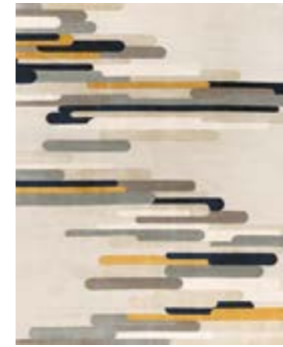
Art.: TR 1429



AMBIANCE



Rue Cler



Brookfield Navy



Barcelona Chequers



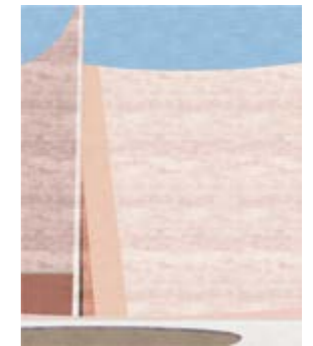
Jeanneret
Poil de Chameau



Camarillo Blanc



Bilbao



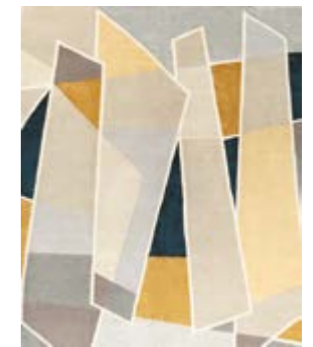
Millenium Bridge



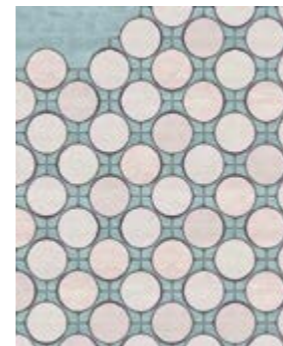
La Chapelle De Jour



Galleries Lafayette



Sacre-Coeur



Jardin de Giverny



La Seine L'Après Midi





Art.: TR 1507



Art.: TR 1434

Barcelona Chequers



Art.: TR 1434

Barcelona Royal Blue



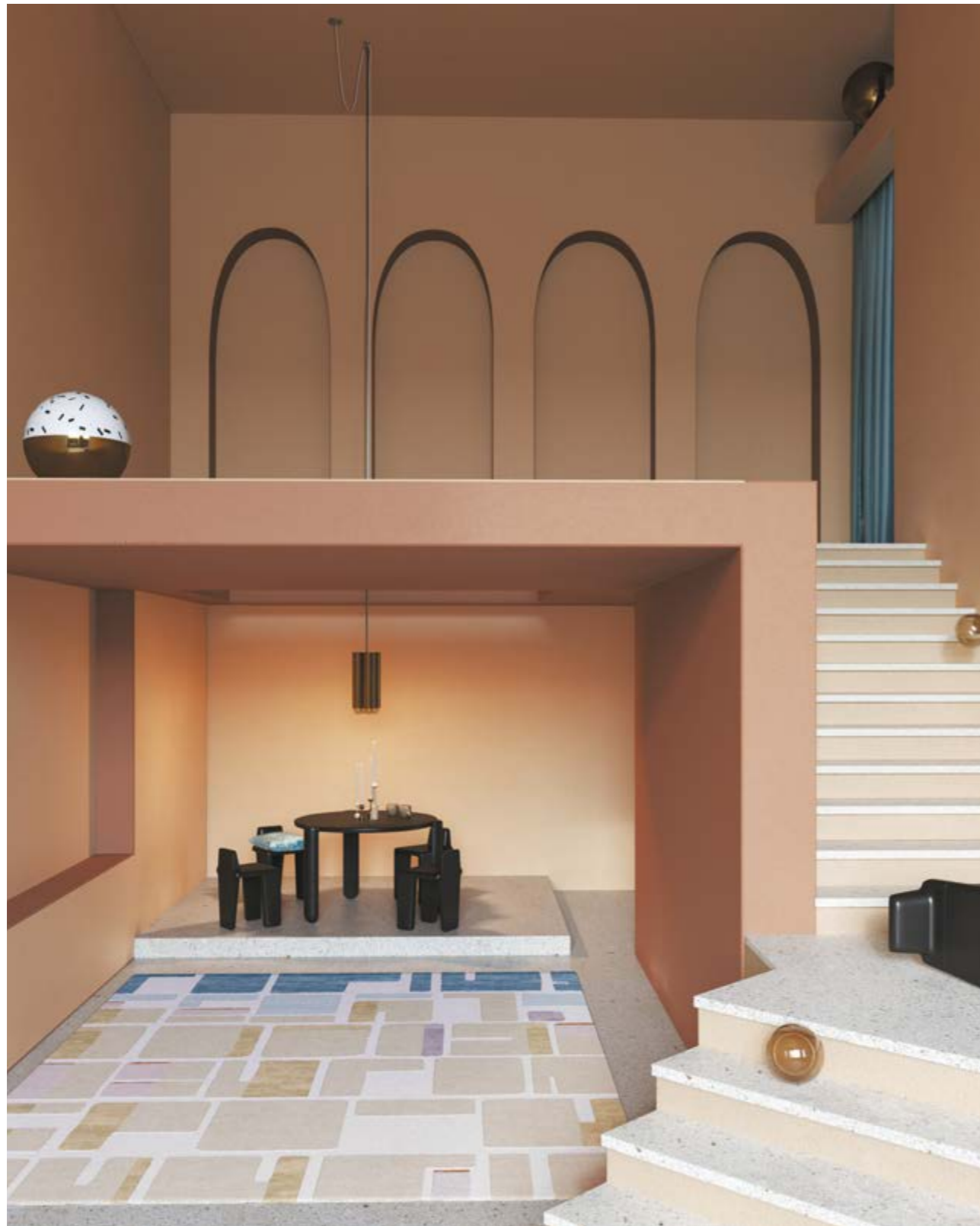
Art.: TR 1507

Hand-knotted
wool, silk & blend silk

1.5 x 2.45 m
2.5 x 3.0 m
2.7 x 3.6 m
3.0 x 4.0 m

100 / 60 knots
height 3, 4, 6, 8 mm





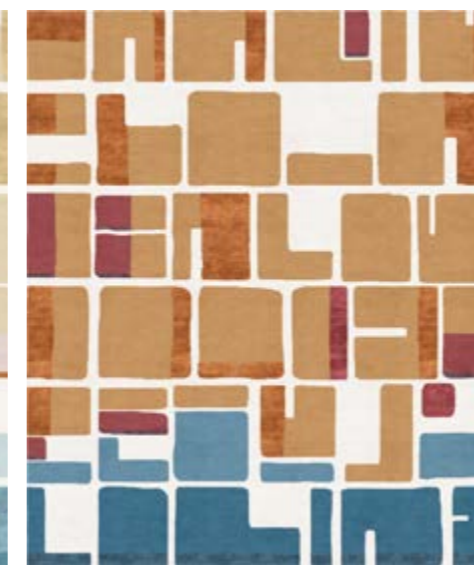
Art.: TR 1431



Art.: TR 1431

Jeanneret Coupe de Rose

Jeanneret Poil de Chameau



Art.: TR 1431

Art.: TR 1505

Hand-knotted
wool & silk

1.5 x 2.45m

2.5 x 3.0m

2.7 x 3.6m

3.0 x 4.0m

60 knots

height 4, 6mm





Art.: TR 1432CB



Art.: TR 1432

Camarillo Bleu Ivoire

Camarillo Blanc



Art.: TR 1432



Art.: TR 1432CB

Hand-knotted
wool & silk

1.5 x 2.45 m

2.5 x 3.0 m

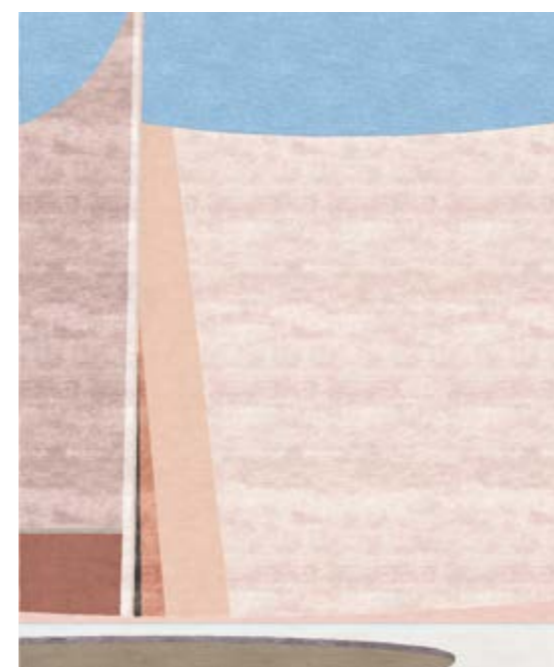
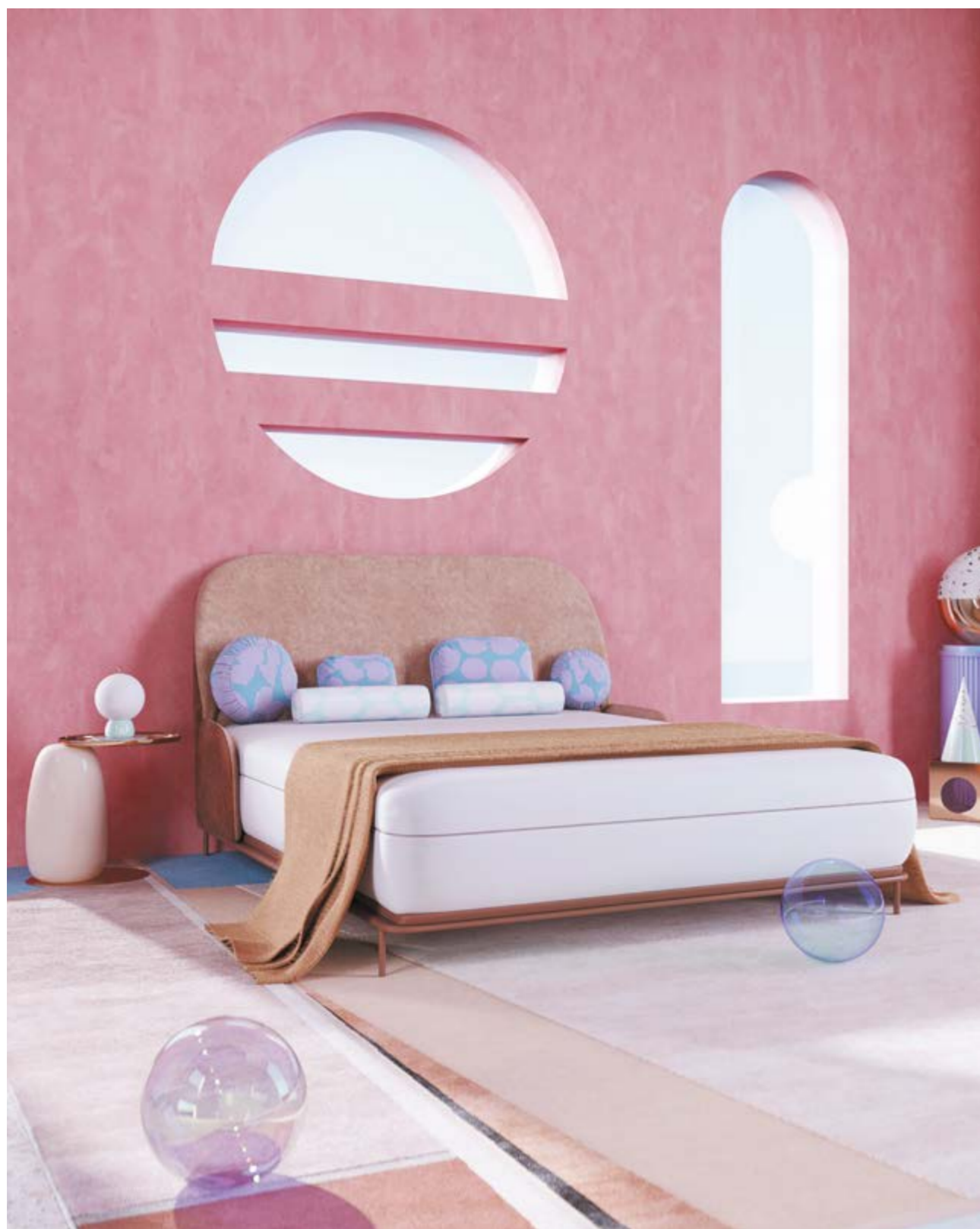
2.7 x 3.6 m

3.0 x 4.0 m

60 knots

height 4, 5 mm





Bilbao

Hand-knotted
wool & silk

1.5 x 2.45m
2.5 x 3.0m
2.7 x 3.6m
3.0 x 4.0m

60 knots
height 4, 6mm

Art.: TR 1508





Millenium Bridge

Hand-knotted
wool & silk

1.5 x 2.45 m
 2.5 x 3.0 m
 2.7 x 3.6 m
 3.0 x 4.0 m
 60 knots
 height 4, 6 mm

Art.: TR 1433





Art.: TR 1438



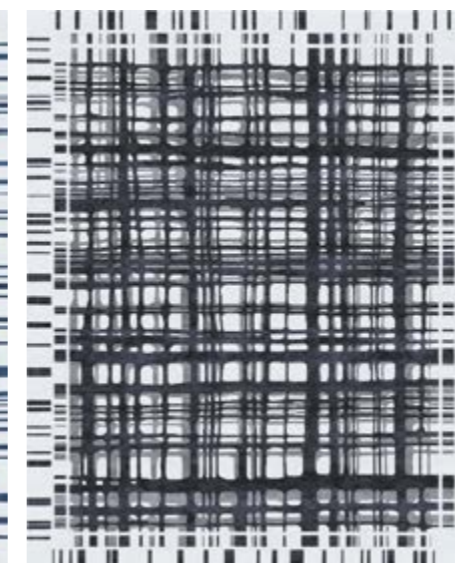
Art.: TR 1438

Brookfield Navy

Brookfield Ink



Art.: TR 1438



Art.: TR 1506

Hand-knotted
wool & silk

1.5 x 2.45 m

2.5 x 3.0 m

2.7 x 3.6 m

3.0 x 4.0 m

60 knots

height 6 mm





Caracas

Hand-knotted
wool & silk

1.5 x 2.45 m
2.5 x 3.0 m
2.7 x 3.6 m
3.0 x 4.0 m
60 knots
height 4, 6 mm

Art.: TR 1509



Merida

Hand-knotted
wool & silk

1.5 x 2.45 m
2.5 x 3.0 m
2.7 x 3.6 m
3.0 x 4.0 m
60 knots
height 4, 6 mm

Art.: TR 1510





Art.: TR 1178



Art.: TR 1230

Le Marais Au Petit Matin



Art.: TR 1178

Le Marais Le Soir



Art.: TR 1230

Hand-knotted
wool & silk

1.5 x 2.45 m
 2.5 x 3.0 m
 2.7 x 3.6 m
 3.0 x 4.0 m
 60 knots
 height 6 mm





Rue Cler

Hand-knotted
wool & silk

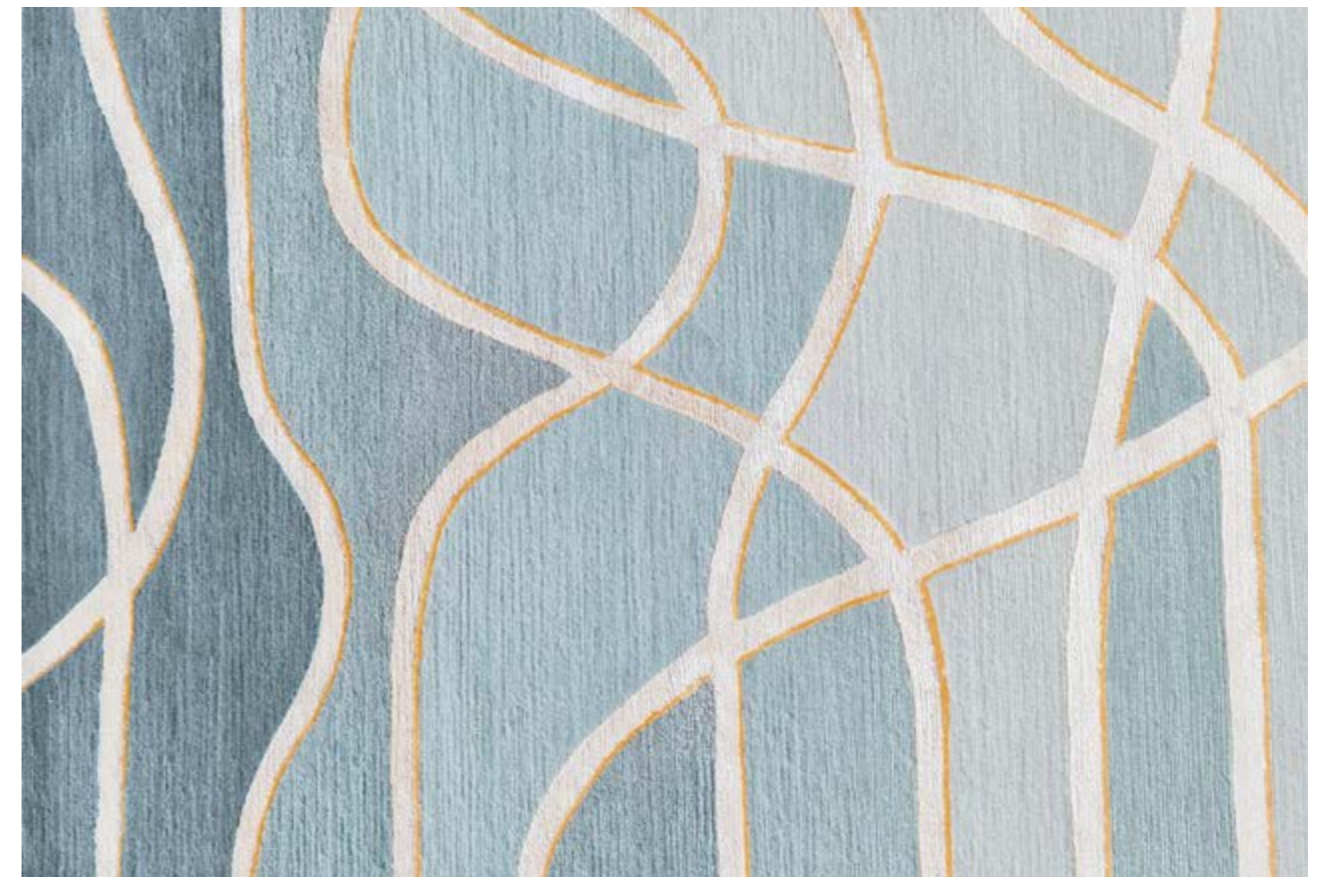
1.5 x 2.45 m
2.5 x 3.0 m
2.7 x 3.6 m
3.0 x 4.0 m
60 knots
height 6 mm

Art.: TR 1218





Art.: TR 1180



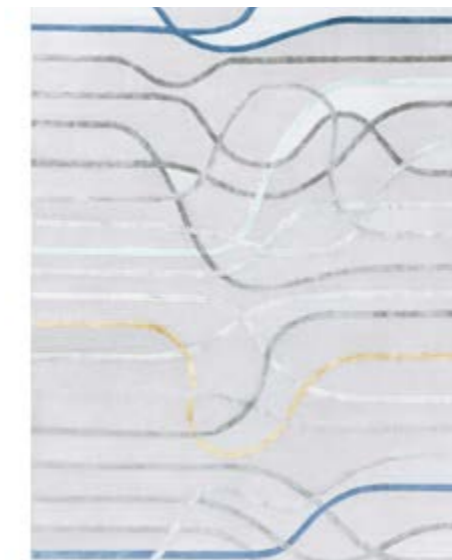
Art.: TR 1180

La Seine Au Crepuscule



Art.: TR 1180

La Seine L`Après Midi



Art.: TR 1390

Hand-knotted
wool & silk

1.5 x 2.45 m

2.5 x 3.0 m

2.7 x 3.6 m

3.0 x 4.0 m

60 knots

height 4, 5, 6 mm





Art.: TR 1387



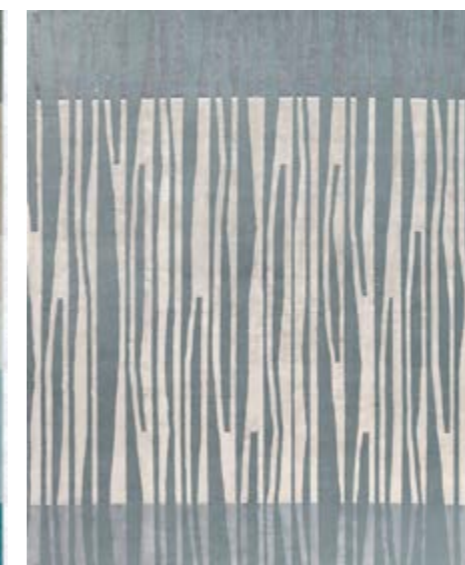
Art.: TR 1386

La Chapelle De Jour

La Chapelle De Nuit



Art.: TR 1386



Art.: TR 1387

Hand-knotted
wool & silk

1.5 x 2.45 m
 2.5 x 3.0 m
 2.7 x 3.6 m
 3.0 x 4.0 m
 60 knots
 height 6 mm





Galleries Lafayette

Hand-knotted
wool & silk

1.5 x 2.45 m

2.5 x 3.0 m

2.7 x 3.6 m

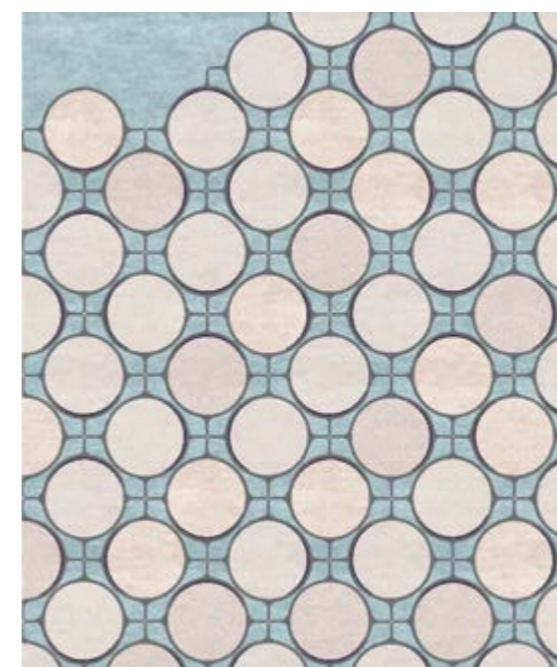
3.0 x 4.0 m

60 knots

height 6 mm

Art.: TR 1219





Sacre-Coeur

Hand-knotted
wool & silk

1.5 x 2.45 m

2.5 x 3.0 m

2.7 x 3.6 m

3.0 x 4.0 m

60 knots
height 6 mm

Art.: TR 1174





Moulin Rouge

Hand-knotted
wool & silk

1.5 x 2.45 m
2.5 x 3.0 m
2.7 x 3.6 m
3.0 x 4.0 m
60 knots
height 6 mm

Art.: TR 1227



Jardin de Giverny

Hand-knotted
wool & silk

1.5 x 2.45 m
2.5 x 3.0 m
2.7 x 3.6 m
3.0 x 4.0 m
60 knots
height 6 mm

Art.: TR 1235





Cornelis

Hand-knotted
wool & silk

1.5 x 2.45m
2.5 x 3.0m
2.7 x 3.6m
3.0 x 4.0m
60 knots
height 4, 6 mm

Art.: TR 1512



Summer in
St. Petersburg

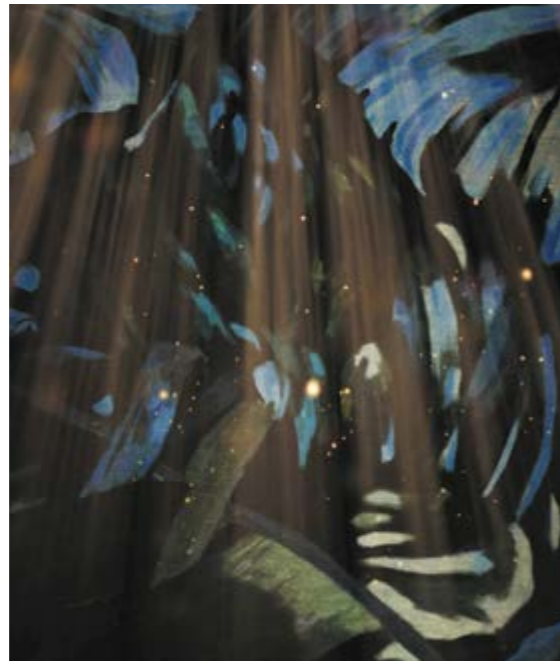
Hand-knotted
wool & silk

1.5 x 2.45 m
2.5 x 3.0 m
2.7 x 3.6 m
3.0 x 4.0 m
60 knots
height 4, 6 mm

Art.: TR 1511



FABULOUS



Rainforest Circle



Gold Forest Circle



Dark Forest Circle



Rainforest



Gold Forest



Dark Forest



Mirror



Movement



Sand Castle



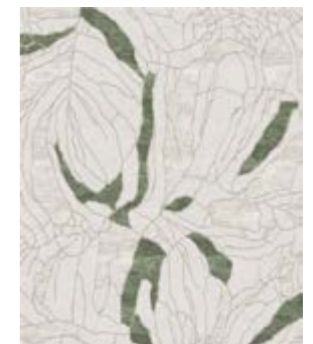
Midsummer



Narcissus Affair



Narcissus





Rainforest

Hand-knotted
wool & blend silk



1.5 x 2.45 m
2.5 x 3.0 m
2.7 x 3.6 m
3.0 x 4.0 m
80 knots
height 6 mm

Art.: TR 1741



Rainforest Circle

Hand-knotted
wool & blend silk



D = 2.7 m
D = 3.0 m
80 knots
height 6 mm

Art.: TR 1741HC





Hand-knotted
wool & blend silk

1.5 x 2.45 m
2.5 x 3.0 m
2.7 x 3.6 m
3.0 x 4.0 m
D = 2.7, 3.0 m
80 knots
height 6 mm



Art.: TR 1853



Art.: TR 1853HC



Art.: TR 1730HC



Art.: TR 1730

Hand-knotted
wool & blend silk

1.5 x 2.45 m
2.5 x 3.0 m
2.7 x 3.6 m
3.0 x 4.0 m
D = 2.7, 3.0 m
80 knots
height 6 mm





Mirror

Hand-knotted
wool & blend silk

1.5 x 2.45 m
2.5 x 3.0 m
2.7 x 3.6 m
3.0 x 4.0 m
80 knots
height 4, 5 mm

Art.: TR 1727



Movement

Hand-knotted
wool & blend silk

1.5 x 2.45 m
2.5 x 3.0 m
2.7 x 3.6 m
3.0 x 4.0 m
60 knots
height 6 mm

Art.: TR 1740





Narcissus Affair

Hand-knotted
wool & blend silk



1.5 x 2.45 m
2.5 x 3.0 m
2.7 x 3.6 m
3.0 x 4.0 m
60 knots
height 4, 6 mm

Art.: TR 1513



Narcissus

Hand-knotted
wool & blend silk



1.5 x 2.45 m
2.5 x 3.0 m
2.7 x 3.6 m
3.0 x 4.0 m
60 knots
height 4, 6 mm

Art.: TR 1728



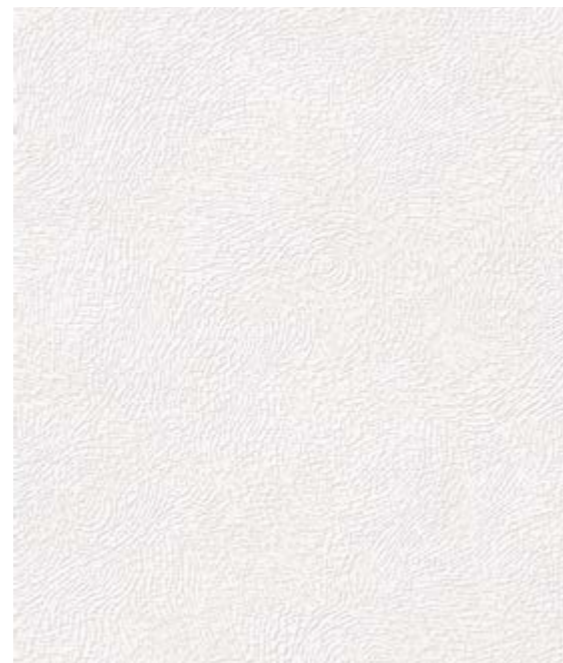


Sand Castle

Hand-knotted
wool & silk

1.5 x 2.45 m
2.5 x 3.0 m
2.7 x 3.6 m
3.0 x 4.0 m
60 knots
height 3, 6 mm

Art.: TR 1658



Midsummer

Hand-knotted
wool & silk

1.5 x 2.45 m
2.5 x 3.0 m
2.7 x 3.6 m
3.0 x 4.0 m
60 knots
height 6, 7, 8 mm

Art.: TR 1729



PER SEMPRE



Griseida



Beatrice



Biancafiore



Lia



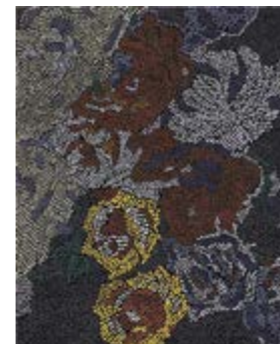
Laura Dorato



Laura Argento



Fiametta
Giardino in Primavera



Fiametta
Giardino in Autunno





TAPIS ROUGE



Griseida

Hand-knotted
wool & silk

2.5 x 3.0 m
2.7 x 3.6 m
3.0 x 4.0 m
100 knots
height 5 mm

Art.: TR TR1584



TAPIS ROUGE



Art.: TR1583



Art.: TR1583

Laura Argento



Art.: TR1649

Laura Dorato



Art.: TR1583

Hand-knotted
wool & silk

2.5 x 3.0 m

2.7 x 3.6 m

3.0 x 4.0 m

100 knots

height 5, 7, 8, 14 mm





Beatrice

Hand-knotted
wool & silk

2.5 x 3.0 m
2.7 x 3.6 m
3.0 x 4.0 m
100 knots
height 5, 7 mm

Art.: TR TR1589





TAPIS ROUGE



Biancafiore
Hand-knotted
wool & silk

2.5 x 3.0 m
2.7 x 3.6 m
3.0 x 4.0 m
100 knots
height 5, 7 mm

Art.: TR1585



TAPIS ROUGE



TAPIS ROUGE



Lia

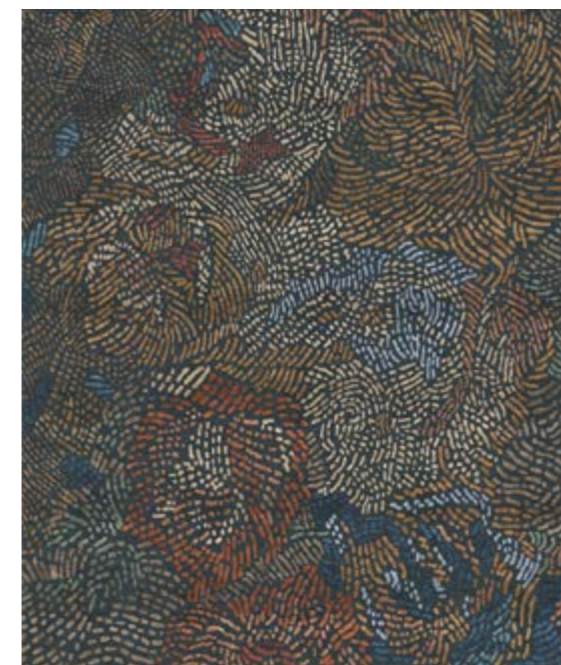
Hand-knotted
wool & silk

2.5 x 3.0 m
2.7 x 3.6 m
3.0 x 4.0 m
100 knots
height 4, 5, 6 mm

Art.: TR1586



TAPIS ROUGE



Fiametta
Giardino in Autunno
Hand-knotted
wool & silk

2.5 x 3.0 m
2.7 x 3.6 m
3.0 x 4.0 m
100 knots
height 4, 6 mm

Art.: TR1587





Fiametta
Giardino in Primavera
Hand-knotted
wool & silk

2.5 x 3.0 m
2.7 x 3.6 m
3.0 x 4.0 m
100 knots
height 4,6 mm

Art.: TR1588





La Scala
by MIKESHILON

Roma Amaranto



Roma Camouflage



Milano Khaki



Firenze Porpora



Firenze Blu Notte



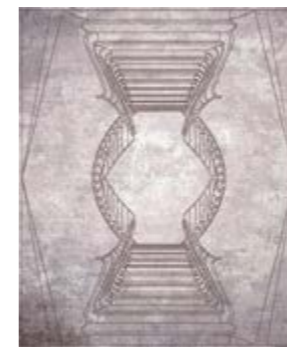
Firenze Ruggine d'Oro



Napoli Fumo



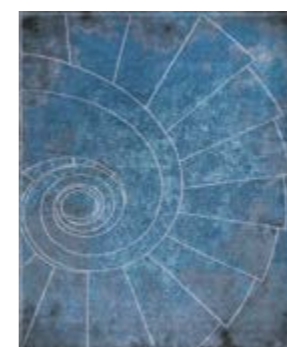
Napoli Rosa Polvere



Napoli Smeraldo



Venezia Celeste





Art.: TR 1241



Art.: TR 1240

Roma Camouflage



Art.: TR 1241

Roma Amaranto



Art.: TR 1240

Hand-knotted
wool & silk

1.5 x 2.45 m
 2.5 x 3.0 m
 2.7 x 3.6 m
 3.0 x 4.0 m
 150 knots
 height 4 mm





TAPIS ROUGE



Milano Khaki

Hand-knotted
wool & silk

1.5 x 2.45 m

2.5 x 3.0 m

2.7 x 3.6 m

3.0 x 4.0 m

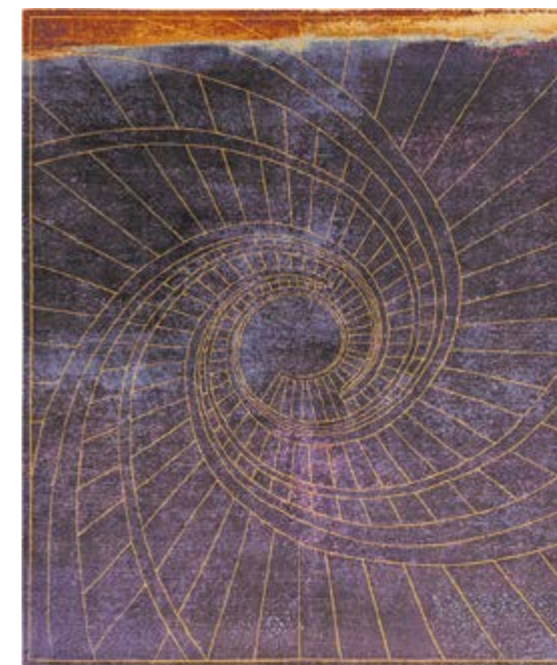
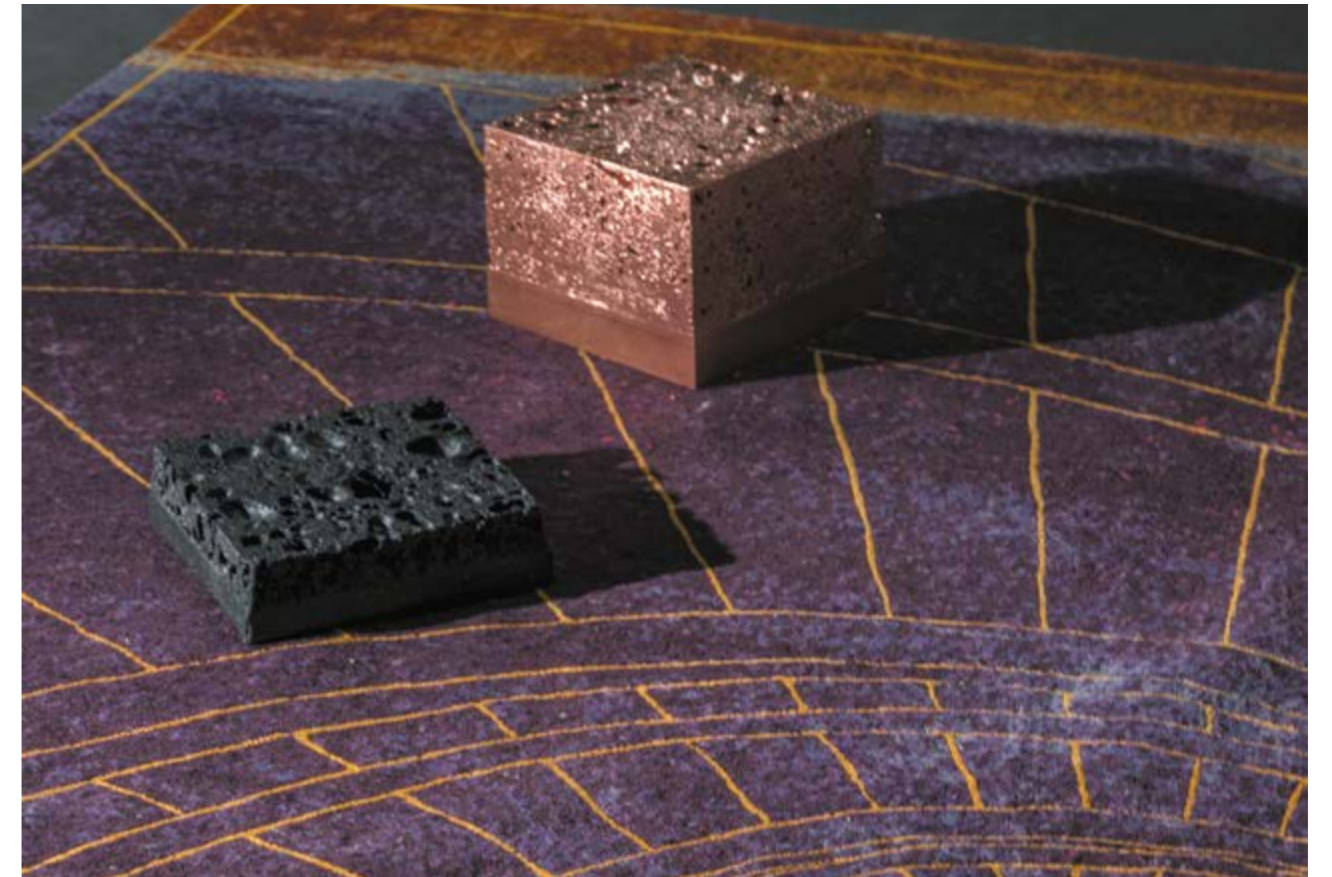
150 knots

height 4 mm

Art.: TR 1236



TAPIS ROUGE



Firenze Porpora

Hand-knotted
wool & silk

1.5 x 2.45 m

2.5 x 3.0 m

2.7 x 3.6 m

3.0 x 4.0 m

150 knots
height 4 mm

Art.: TR 1238





Art.: TR 1245



Art.: TR 1239

Firenze Blu Notte



Art.: TR 1245

Firenze Ruggine d'Oro



Art.: TR 1239

Hand-knotted
wool & silk

1.5 x 2.45 m
 2.5 x 3.0 m
 2.7 x 3.6 m
 3.0 x 4.0 m
 150 knots
 height 4 mm





Art.: TR 1244



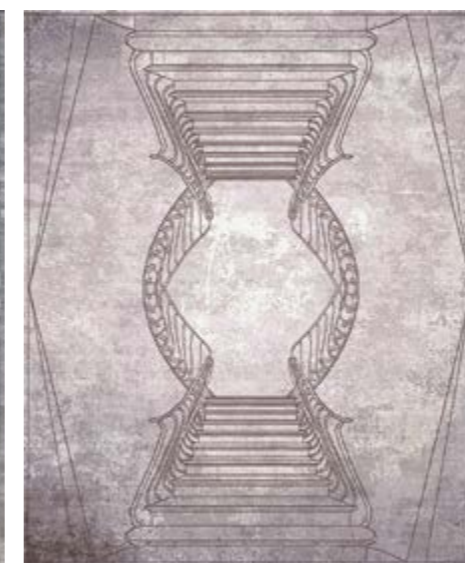
Art.: TR 1237

Napoli Fumo

Napoli Rosa Polvere



Art.: TR 1244



Art.: TR 1237

Hand-knotted
wool & silk

1.5 x 2.45 m
 2.5 x 3.0 m
 2.7 x 3.6 m
 3.0 x 4.0 m
 150 knots
 height 4 mm





Napoli Smeraldo

Hand-knotted
wool & silk

1.5 x 2.45 m
 2.5 x 3.0 m
 2.7 x 3.6 m
 3.0 x 4.0 m
 150 knots
 height 4 mm

Art.: TR 1243





Venezia Celeste

Hand-knotted
wool & silk

1.5 x 2.45 m
2.5 x 3.0 m
2.7 x 3.6 m
3.0 x 4.0 m
150 knots
height 4 mm

Art.: TR 1242



KOI POND



Design by Katerina Kolegova

Gold Fish



Red Fish





Art.: TR 1017



Art.: TR 1018

Gold Fish

Red Fish



Art.: TR 1017



Art.: TR 1018

Hand-knotted
wool & silk

1.5 x 2.45 m
 2.5 x 3.0 m
 2.7 x 3.6 m
 3.0 x 4.0 m
 100 knots
 height 4 mm



HIMALAYA



Sand Pebbles



Serenity Lake



Multani Clay



Volcanic Saga



Kuninda Kingdom



Meru North



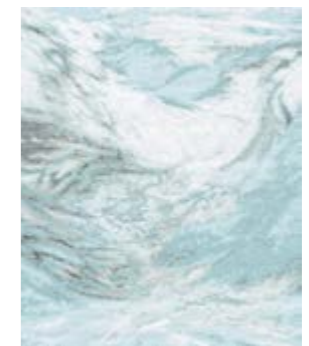
Silver Chants



Eternity Lapse



Sutlej Radiance





Sand Pebbles

Hand-knotted
wool & blend silk

1.5 x 2.45 m

2.5 x 3.0 m

2.7 x 3.6 m

3.0 x 4.0 m

100 knots

height 5 mm

Art.: TR 1276





Serenity Lake

Hand-knotted
wool, blend silk & allo



1.5 x 2.45 m
2.5 x 3.0 m
2.7 x 3.6 m
3.0 x 4.0 m
100 knots
height 5 mm

Art.: TR 1271



Multani Clay

Hand-knotted
wool & blend silk



1.5 x 2.45 m
2.5 x 3.0 m
2.7 x 3.6 m
3.0 x 4.0 m
100 knots
height 4, 5 mm

Art.: TR 1281



Volcanic Saga

Hand-knotted
wool, blend silk & allo

1.5 x 2.45 m
 2.5 x 3.0 m
 2.7 x 3.6 m
 3.0 x 4.0 m
 100 knots
 height 3, 5 mm

Art.: TR 1274





Kuninda Kingdom

Hand-knotted
wool & blend silk



1.5 x 2.45 m
2.5 x 3.0 m
2.7 x 3.6 m
3.0 x 4.0 m
100 knots
height 5 mm

Art.: TR 1270



Meru North

Hand-knotted
wool, blend silk



1.5 x 2.45 m
2.5 x 3.0 m
2.7 x 3.6 m
3.0 x 4.0 m
100 knots
height 3,5 mm

Art.: TR 1278





Silver Chants

Hand-knotted
wool, blend silk & allo



1.5 x 2.45 m
2.5 x 3.0 m
2.7 x 3.6 m
3.0 x 4.0 m
100 knots
height 3, 4 mm

Art.: TR 1275



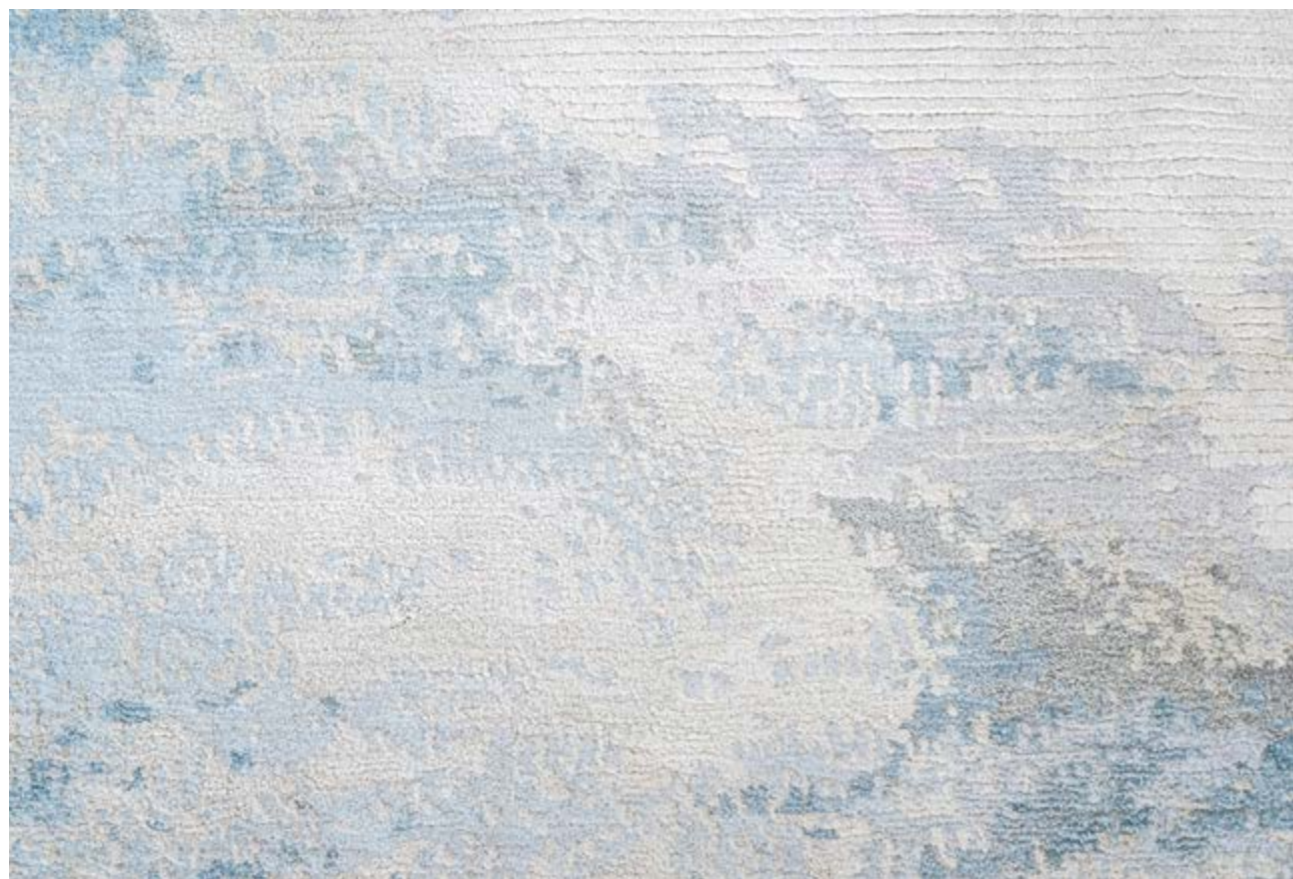
Zanskar Allure

Hand-knotted
wool, blend silk & allo



1.5 x 2.45 m
2.5 x 3.0 m
2.7 x 3.6 m
3.0 x 4.0 m
100 knots
height 5 mm

Art.: TR 1272



Sutlej Radiance

Hand-knotted
wool & blend silk



1.5 x 2.45m
2.5 x 3.0m
2.7 x 3.6m
3.0 x 4.0m
100 knots
height 4, 6mm

Art.: TR 1280



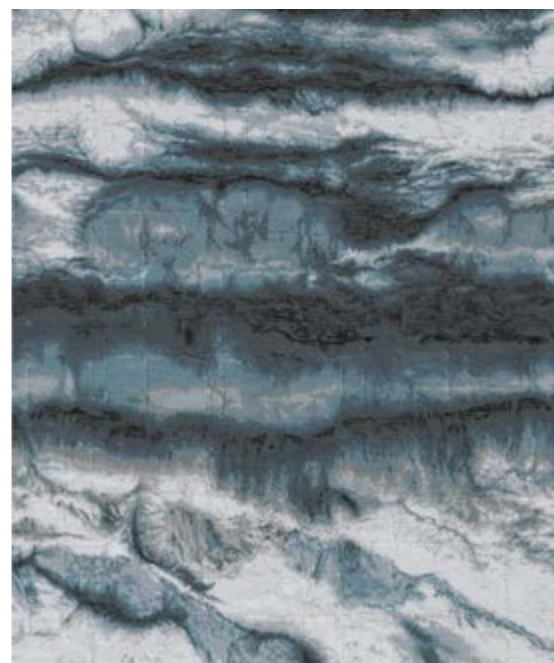
Eternity Lapse

Hand-knotted
wool & blend silk



1.5 x 2.45 m
2.5 x 3.0 m
2.7 x 3.6 m
3.0 x 4.0 m
100 knots
height 4, 6 mm

Art.: TR 1279



MAISON SIX



One



Two



Four



Six



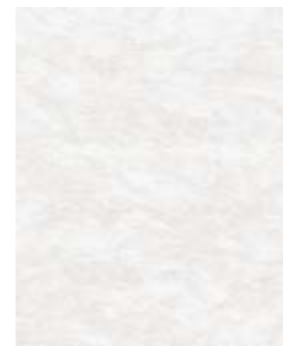
Seven



Eight



Nine



Ten



Hand-knotted
wool & tencel

1.5 x 2.45 m
2.5 x 3.0 m
2.7 x 3.6 m
3.0 x 4.0 m
80 knots
height 4, 5, 6 mm



Art.: TR 1260

One White



Art.: TR 1260

One Beige



Art.: TR 1530

One Grey



Art.: TR 1531

Hand-knotted
wool, tencel & allo

1.5 x 2.45 m
2.5 x 3.0 m
2.7 x 3.6 m
3.0 x 4.0 m
80 knots
height 2, 6 mm



Art.: TR 1324

Two White



Art.: TR 1324

Two Beige



Art.: TR 1323

Two Grey



Art.: TR 1325

Hand-knotted
wool, tencel & allo

1.5 x 2.45 m
2.5 x 3.0 m
2.7 x 3.6 m
3.0 x 4.0 m
80 knots
height 4, 6 mm



Art.: TR 1327

Four White



Art.: TR 1327

Four Beige



Art.: TR 1326

Four Grey



Art.: TR 1328

Hand-knotted
wool, tencel & allo

1.5 x 2.45 m
2.5 x 3.0 m
2.7 x 3.6 m
3.0 x 4.0 m
60 knots
height 5 mm



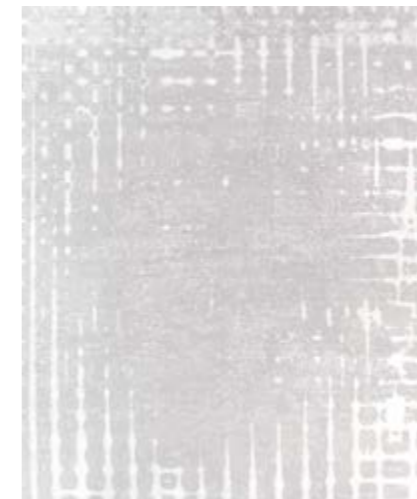
Art.: TR 1341

Six White



Art.: TR 1341

Six Beige



Art.: TR 1340

Six Grey



Art.: TR 1342

Hand-knotted
wool, tencel & allo

1.5 x 2.45 m
2.5 x 3.0 m
2.7 x 3.6 m
3.0 x 4.0 m
60 knots
height 5 mm



Art.: TR 1349

Seven White



Art.: TR 1349

Seven Beige



Art.: TR 1348

Seven Grey



Art.: TR 1350



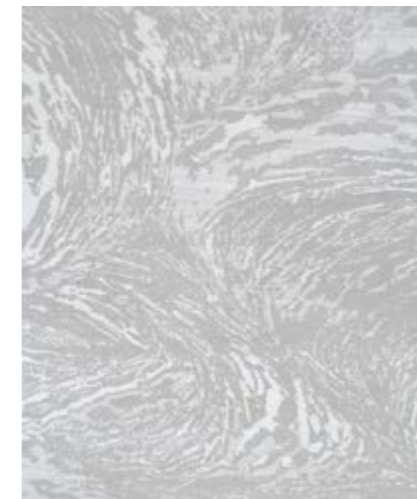
Art.: TR 1351

Eight White



Art.: TR 1352

Eight Beige



Art.: TR 1351

Eight Grey



Art.: TR 1353

Hand-knotted
wool, tencel & allo

1.5 x 2.45 m
2.5 x 3.0 m
2.7 x 3.6 m
3.0 x 4.0 m
60 knots
height 5 mm



Hand-knotted
wool & tencel

1.5 x 2.45 m
2.5 x 3.0 m
2.7 x 3.6 m
3.0 x 4.0 m
80 knots
height 4, 5, 6 mm



Art.: TR 1343

Nine White



Art.: TR 1343

Nine Beige



Art.: TR 1264

Nine Grey

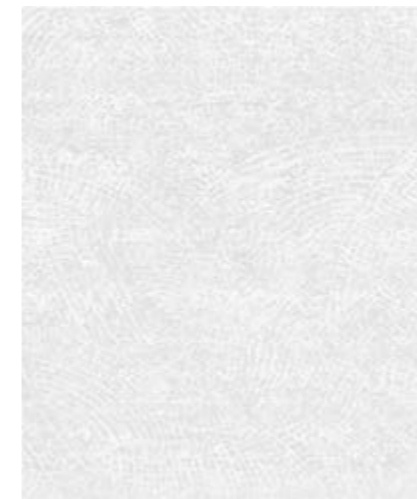


Art.: TR 1344



Art.: TR 1347

Ten White



Art.: TR 1346

Ten Beige



Art.: TR 1345

Hand-knotted
wool, tencel & allo

1.5 x 2.45 m
2.5 x 3.0 m
2.7 x 3.6 m
3.0 x 4.0 m
60 knots
height 5 mm



Ten Grey



Art.: TR 1347

SINFONIA



Serenata



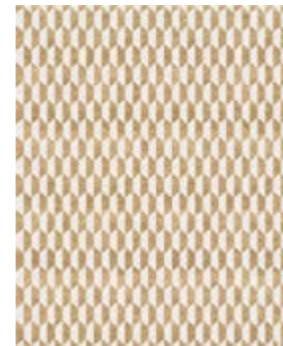
Enigma



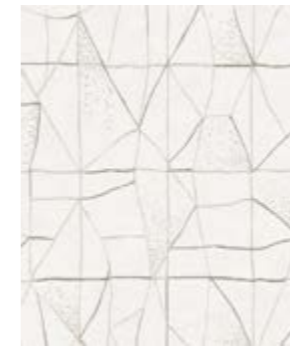
Cantilena Aligera



Duetto d'Oro



Suono Alto



Brillante



Soprano Grigio



Cordelia



Adagio



Infinito



Notturmo Nero



Sonata





Art.: TR 1547

Serenata



Art.: TR 1550

Staccato



Art.: TR 1549

Hand-knotted
wool & blend silk

1.5 x 2.45 m
2.5 x 3.0 m
2.7 x 3.6 m
3.0 x 4.0 m
60 knots
height 6, 8 mm



Intermezzo



Art.: TR 1548

Arioso



Art.: TR 1547

Hand-knotted
wool & blend silk

1.5 x 2.45m
2.5 x 3.0m
2.7 x 3.6m
3.0 x 4.0m
60 knots
height 6, 8mm



Hand-knotted
wool & blend silk

1.5 x 2.45 m
2.5 x 3.0 m
2.7 x 3.6 m
3.0 x 4.0 m
80 / 60 knots
height 8 mm



Adagio



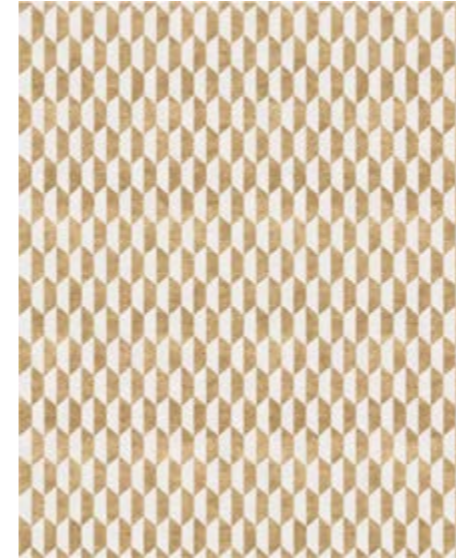
Art.: TR 1947

Sonata



Art.: TR 1958

Duetto d'Oro



Art.: TR 1953

Duetto Chiaro



Art.: TR 1954

Hand-knotted
wool & blend silk

1.5 x 2.45 m
2.5 x 3.0 m
2.7 x 3.6 m
3.0 x 4.0 m
80 knots
height 6 mm

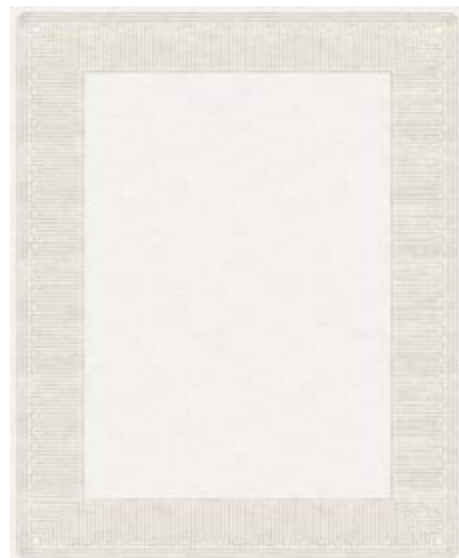


Hand-knotted
wool & blend silk

1.5 x 2.45 m
2.5 x 3.0 m
2.7 x 3.6 m
3.0 x 4.0 m
80 knots
height 6, 8 mm



Enigma



Art.: TR 1955

Brillante



Art.: TR 1949

Suono Basso



Art.: TR 1962

Suono Alto



Art.: TR 1961

Hand-knotted
wool & blend silk

1.5 x 2.45 m
2.5 x 3.0 m
2.7 x 3.6 m
3.0 x 4.0 m
80 knots
height 6 mm



Hand-knotted
wool & blend silk

1.5 x 2.45 m
2.5 x 3.0 m
2.7 x 3.6 m
3.0 x 4.0 m
60 knots
height 6, 8 mm



Soprano Grigio



Art.: TR 1959

Soprano Beige



Art.: TR 1960

Infinito



Art.: TR 1956

Cordelia



Art.: TR 1952

Hand-knotted
wool & blend silk

1.5 x 2.45 m
2.5 x 3.0 m
2.7 x 3.6 m
3.0 x 4.0 m
80 / 60 knots
height 6, 8 mm



Hand-knotted
wool & blend silk

1.5 x 2.45 m
2.5 x 3.0 m
2.7 x 3.6 m
3.0 x 4.0 m
80 knots
height 6 mm



Cantilena Lenta



Art.: TR 1951

Cantilena Aligera



Art.: TR 1950

Notturmo Chiaro



Art.: TR 1948

Notturmo Nero



Art.: TR 1957

Hand-knotted
wool & blend silk

1.5 x 2.45 m
2.5 x 3.0 m
2.7 x 3.6 m
3.0 x 4.0 m
60 knots
height 6 mm



MODERN CLASSICS



Aubusson Heraldy
Antique White



Aubusson Heraldy
Palais Royal



Aubusson Heraldy
Floral Grotesque



Belle Vue Ivory White



Renaissance Gold



Damask Vintage
Crimson



Ornate Stucco
Deep Blue



Ornate Stucco
Antique White



Aubusson Tapisserie
Floral Blue



Savoy Noble Orange



Rosemont



Rosemont Circle





Art.: TR 1449P

Aubusson Vintage
Dusty Beige



Art.: TR 1634HC

Aubusson Vintage
Dusty Rose



Art.: TR 1449P

Aubusson Tapisserie
Floral Grey



Art.: TR 1449GH

Aubusson Tapisserie
Floral Blue



Art.: TR 1539

Hand-knotted
wool & blend silk

1.5 x 2.45 m
2.5 x 3.0 m
2.7 x 3.6 m
3.0 x 4.0 m
100 knots
height 5 mm



Hand-knotted
wool & silk

1.5 x 2.45 m
2.5 x 3.0 m
2.7 x 3.6 m
3.0 x 4.0 m
100 knots
height 4 mm



Hand-knotted
silk / wool & blend silk

2.5 x 3.0 m
2.7 x 3.6 m
3.0 x 4.0 m
150 / 100 knots
height 4, 6 mm



Renaissance Gold



Art.: TR 1542

Belle Vue Ivory White



Art.: TR 1442WH

Damask Vintage Gold



Art.: TR 1448G

Damask Vintage Crimson



Art.: TR 1448R

Hand-knotted
wool & blend silk

1.5 x 2.45m
2.5 x 3.0m
2.7 x 3.6m
3.0 x 4.0m
100 knots
height 4mm



Hand-knotted
wool & blend silk

1.5 x 2.45 m
2.5 x 3.0 m
2.7 x 3.6 m
3.0 x 4.0 m
100 knots
height 4 mm



Ornamental Indigo Velvet



Art.: TR 1543

Ornamental Nude Velvet



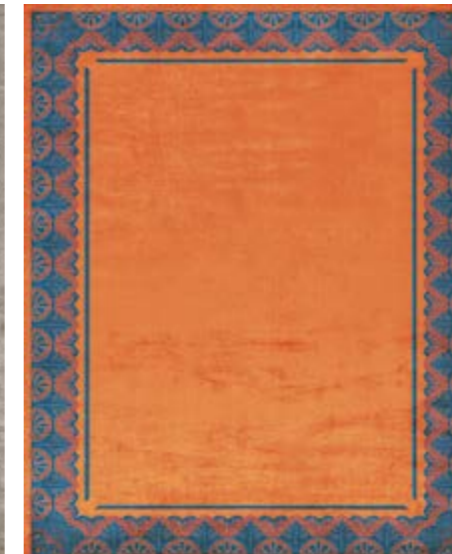
Art.: TR 1544

Savoy Smoky Grey



Art.: TR 1014

Savoy Noble Orange



Art.: TR 1012

Hand-knotted
wool & silk

1.5 x 2.45 m
2.5 x 3.0 m
2.7 x 3.6 m
3.0 x 4.0 m
150 knots
height 4, 6 mm





Art.: TR 1904HM

Aubusson Heraldry
Heavenly Motifs



Art.: TR 1904HM

Aubusson Heraldry
Palais Royal



Art.: TR 1905

Aubusson Heraldry
Floral Grotesque



Art.: TR 1399

Aubusson Heraldry
Heritage



Art.: TR 1540

Hand-knotted
wool & silk

1.5 x 2.45 m
2.5 x 3.0 m
2.7 x 3.6 m
3.0 x 4.0 m
100 knots
height 4, 6 mm



Hand-knotted
wool & silk / silk

1.5 x 2.45m
2.5 x 3.0m
2.7 x 3.6m
3.0 x 4.0m
150 knots
height 4 mm





Art.: TR 1440G



Art.: TR 1440G

Ornate Stucco
Antique White



Art.: TR 1440G

Ornate Stucco
Deep Blue



Art.: TR 1440B

Hand-knotted
wool & blend silk

1.5 x 2.45 m
 2.5 x 3.0 m
 2.7 x 3.6 m
 3.0 x 4.0 m
 100 knots
 height 4 mm





Aubusson Heraldy
Antique White

Hand-knotted
wool & silk

1.5 x 2.45 m
2.5 x 3.0 m
2.7 x 3.6 m
3.0 x 4.0 m
100 knots
height 4, 6 mm



Art.: TR 1442

Belle Vue
Pearl



Art.: TR 1541



Royal
Arfa Ochre



Art.: TR 1664

Royal
Arfa Blue



Art.: TR 1664BL

Hand-knotted
silk 100%

4.28 x 5.3 m
300 knots
height 2 mm





Rosemont Circle

Hand-knotted
silk 100%

2.8 m
3.0 m
200 knots
height 3 mm

Art.: TR 1545



Rosemont

Hand-knotted
wool 100%

1.5 x 2.45 m
2.5 x 3.0 m
2.7 x 3.6 m
3.0 x 4.0 m
200 knots
height 6 mm

Art.: TR 1546



DENTELLE



Charlotte Blanc



Charlotte Gris



Charlotte Terrestre



Claudine Blanc



Claudine Gris



Claudine Terrestre



Clementine Blanc



Clementine Gris



Clementine Terrestre





Art.: TR 1354



Art.: TR 1355

Hand-knotted
wool & silk

1.5 x 2.45 m

2.5 x 3.0 m

2.7 x 3.6 m

3.0 x 4.0 m

100 knots

height 2, 3, 4 mm



Charlotte Blanc



Art.: TR 1356

Charlotte Gris



Art.: TR 1354

Charlotte Terrestre



Art.: TR 1355

Hand-knotted
wool & silk

1.5 x 2.45 m
2.5 x 3.0 m
2.7 x 3.6 m
3.0 x 4.0 m
100 knots
height 3, 4 mm



Art.: TR 1359

Claudine Blanc



Art.: TR 1358

Claudine Gris



Art.: TR 1359

Claudine Terrestre



Art.: TR 1257



Art.: TR 1360

Hand-knotted
wool & silk

1.5 x 2.45 m
2.5 x 3.0 m
2.7 x 3.6 m
3.0 x 4.0 m
100 knots
height 2, 4 mm



Clementine Blanc



Art.: TR 1360

Clementine Gris



Art.: TR 1361

Clementine Terrestre



Art.: TR 1362

CHINOISERIE



Manchurian Cranes
Eggshell



Temple Ceremony
Chinese Blue



Lingering Garden
Beige



Floating Lotus
Cloud Grey



Pagoda Blue Fade



Chinese Phoenix
Antique Gold



Chinese Phoenix
Bronze



Tempest Flame



Rice Fields Silver



Monsoon Season
Gold



Riverhouse Spring
Garden



Immortality
Grove Emperors





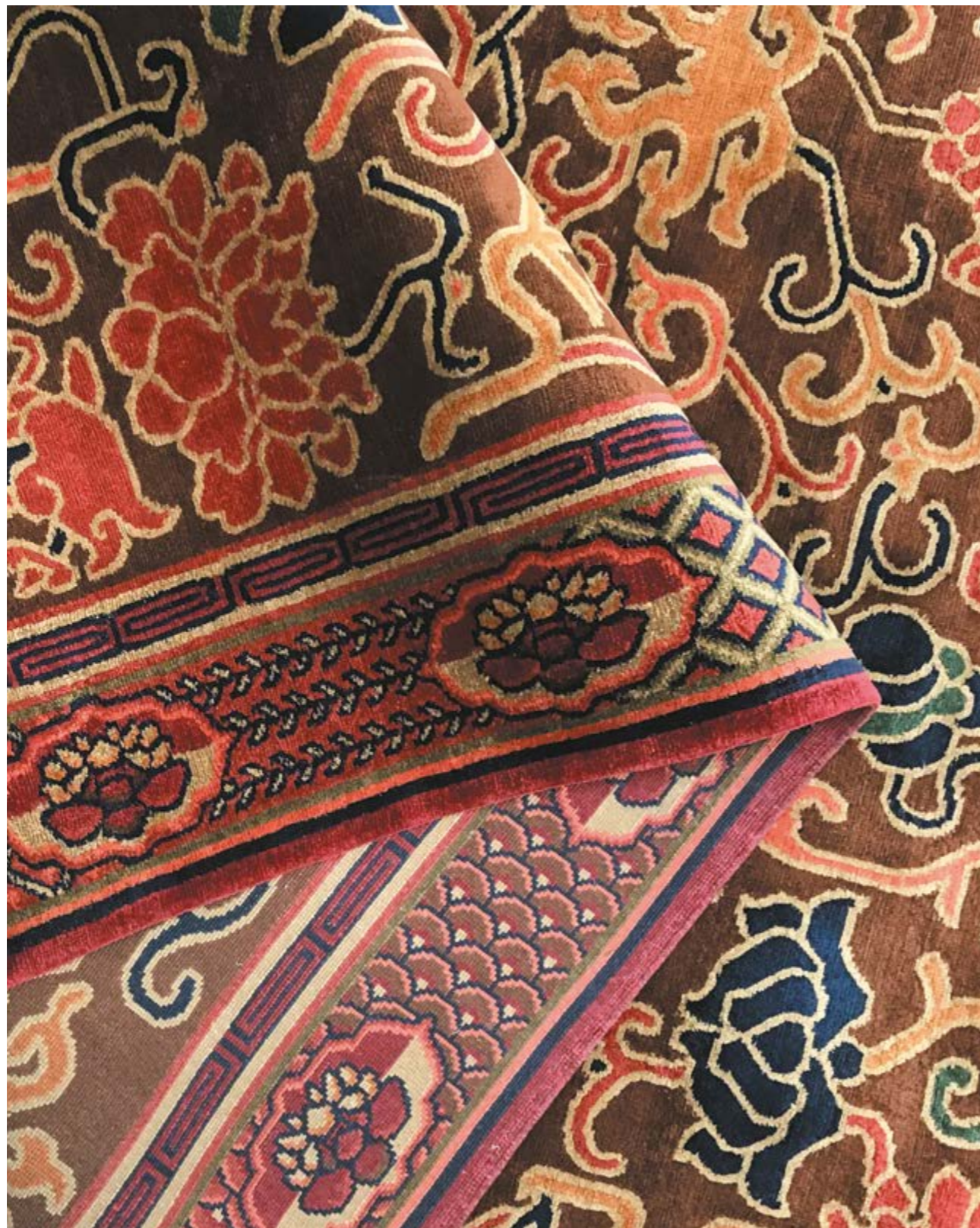
Temple Ceremony
Chinese Blue

Hand-knotted
wool & silk

1.5 x 2.45 m
2.5 x 3.0 m
2.7 x 3.6 m
3.0 x 4.0 m
150 knots
height 5 mm

Art.: TR 1363





Art.: TR 1521



Art.: TR 1521

Lingering Garden Chestnut

Lingering Garden Beige



Art.: TR 1521



Art.: TR 1368

Hand-knotted
wool & silk

1.5 x 2.45 m
2.5 x 3.0 m
2.7 x 3.6 m
3.0 x 4.0 m
100 knots
height 4 mm





Art.: TR 1378



Art.: TR 1377

Floating Lotus Cloud Grey

Floating Lotus River Blue



Art.: TR 1378



Art.: TR 1377

Hand-knotted
wool & silk

1.5 x 2.45 m
2.5 x 3.0 m
2.7 x 3.6 m
3.0 x 4.0 m
100 knots
height 4 mm





Art.: TR 1379



Art.: TR 1382

Hand-knotted
wool & silk

1.5 x 2.45 m
2.5 x 3.0 m
2.7 x 3.6 m
3.0 x 4.0 m
100 knots
height 4 mm



Pagoda Antique Sand



Art.: TR 1379

Pagoda Blue Fade



Art.: TR 1381

Manchurian Cranes Eggshell



Art.: TR 1382

Manchurian Cranes Indigo



Art.: TR 1526

Hand-knotted
wool & silk / silk

1.5 x 2.45 m
2.5 x 3.0 m
2.7 x 3.6 m
3.0 x 4.0 m
150 knots
height 4 mm





Art.: TR 1523



Art.: TR 1524

Chinese Phoenix
Antique Indigo



Art.: TR 1524

Chinese Phoenix
Antique Gold



Art.: TR 1523

Hand-knotted
silk 100%

1.5 x 2.45 m
2.5 x 3.0 m
2.7 x 3.6 m
3.0 x 4.0 m
200 knots
height 4mm





Art.: TR 1364



Art.: TR 1365

Chinese Phoenix Bronze

Chinese Phoenix Celeste



Art.: TR 1364



Art.: TR 1365

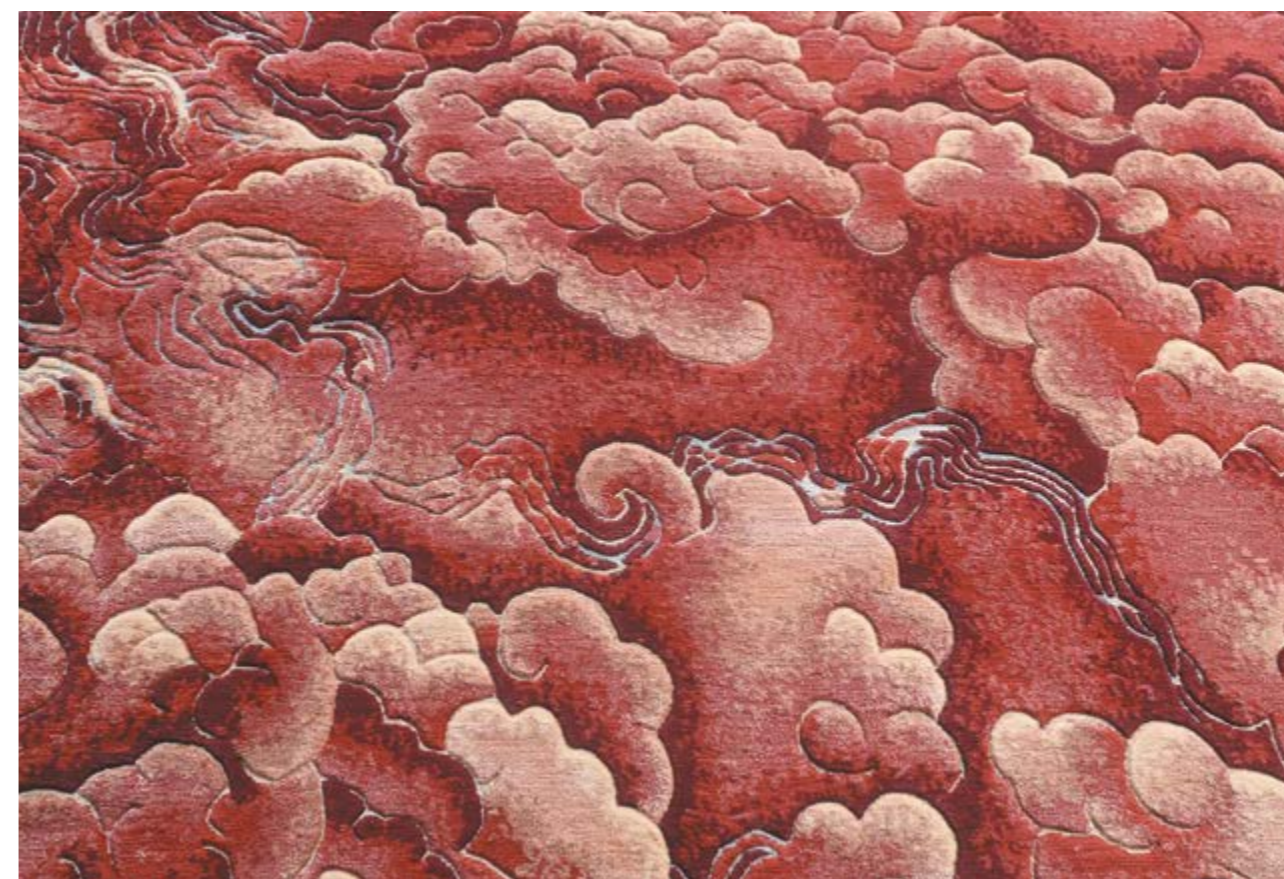
Hand-knotted
silk 100%

1.5 x 2.45 m
2.5 x 3.0 m
2.7 x 3.6 m
3.0 x 4.0 m
150 knots
height 4 mm





Art.: TR 1396



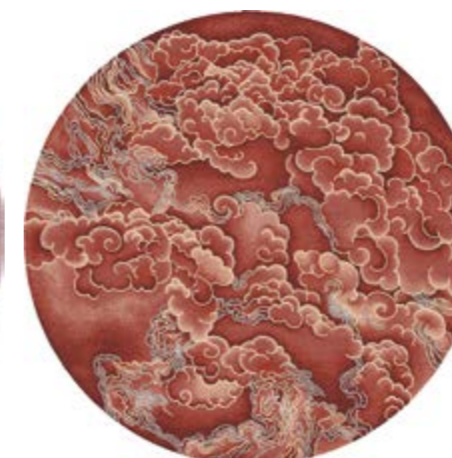
Art.: TR 1397

Tempest Bronze



Art.: TR 1396

Tempest Flame



Art.: TR 1397

Hand-knotted
wool & silk

D = 2.7 m
D = 3.0 m
100 knots
height 3, 5 mm





Art.: TR 1527



Art.: TR 1528

Rice Fields Silver



Art.: TR 1528

Monsoon Season Gold



Art.: TR 1527

Hand-knotted
wool & silk

1.5 x 2.45 m
2.5 x 3.0 m
2.7 x 3.6 m
3.0 x 4.0 m
100 knots
height 3, 5, 8 mm





Riverhouse Nebula
Silky Weaving



Art.: TR 1446

Riverhouse Celeste
Silky Weaving



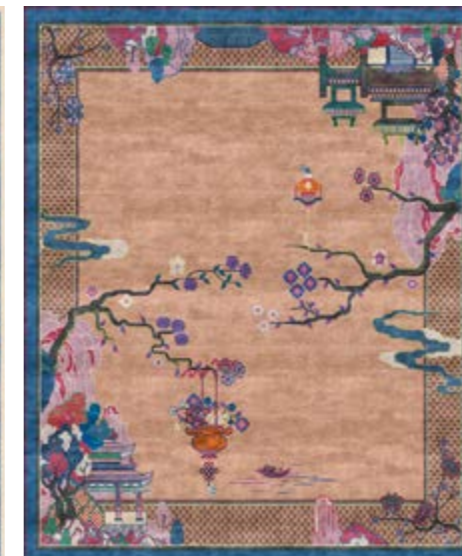
Art.: TR 1445

Riverhouse Antique Sand



Art.: TR 1536

Riverhouse Spring Garden



Art.: TR 1444

Hand-knotted
wool & silk

1.5 x 2.45 m
2.5 x 3.0 m
2.7 x 3.6 m
3.0 x 4.0 m
100 knots
height 4mm



Hand-knotted
wool & silk

1.5 x 2.45 m
2.5 x 3.0 m
2.7 x 3.6 m
3.0 x 4.0 m
100 knots
height 4 mm





Art.: TR 1441RD



Art.: TR 1441BG

Immortality Grove
Emperors Red



Art.: TR 1441RD

Immortality Grove
Gold Leaf



Art.: TR 1441BG

Hand-knotted
wool & silk

1.5 x 2.45 m
2.5 x 3.0 m
2.7 x 3.6 m
3.0 x 4.0 m
100 knots
height 4 mm



ARCHIVE



Lalibela



Leleu Chivarly Grey



Leleu Noblesse Lilies



Leleu Anette
Efflorescence



Leleu Rosary Scent



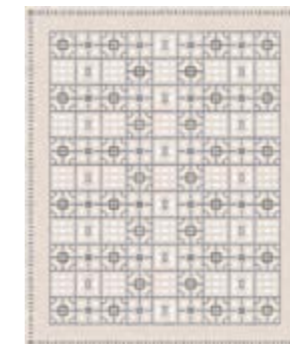
Leleu Pauline
Orangery



Olympus



Leleu Laurel Nude



Notos





Lalibela

Hand-knotted
silk 100%

1.5 x 2.45 m
2.5 x 3.0 m
2.7 x 3.6 m
3.0 x 4.0 m
150 knots
height 4 mm

Art.: TR 1461



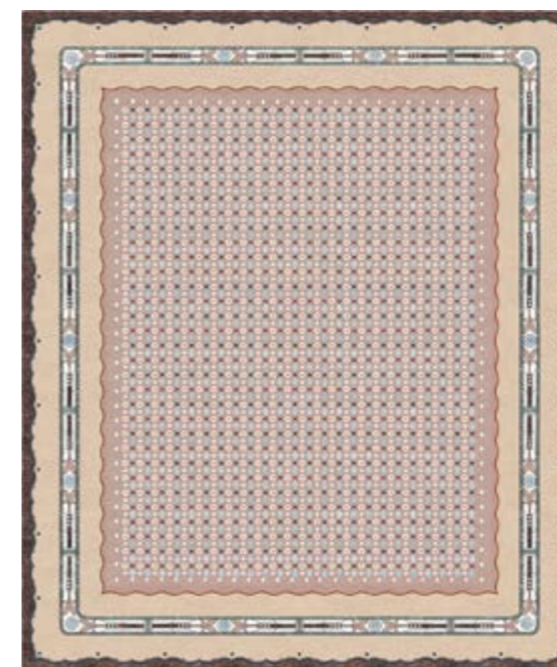
Leleu Pauline Orangery

Hand-knotted
silk 100%

2.0 x 2.0 m
2.8 x 2.8 m
150 knots
height 4 mm

Art.: TR 1202





Leleu Noblesse Lilies

Hand-knotted
wool & silk

1.5 x 2.45 m
2.5 x 3.0 m
2.7 x 3.6 m
3.0 x 4.0 m
150 knots
height 4 mm

Art.: TR 1203





Leleu Anette
Efflorescence

Hand-knotted
silk 100%

D = 2.5 m
D = 2.7 m
D = 3.0 m
150 knots
height 3 mm

Art.: TR 1221



Leleu Rosary
Scent

Hand-knotted
silk 100%

1.5 x 2.45 m
2.5 x 3.0 m
2.7 x 3.6 m
3.0 x 4.0 m
150 knots
height 3 mm

Art.: TR 1222





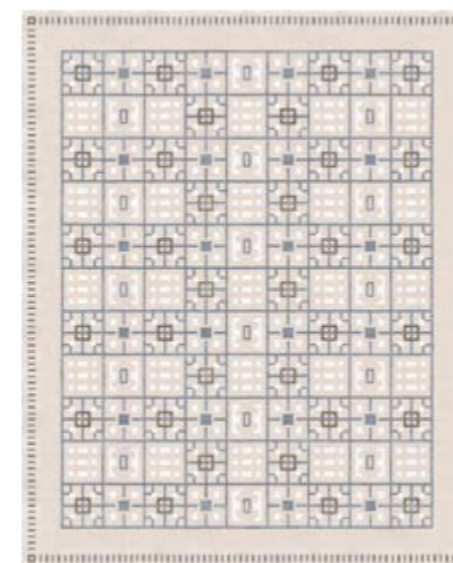
Art.: TR 1385



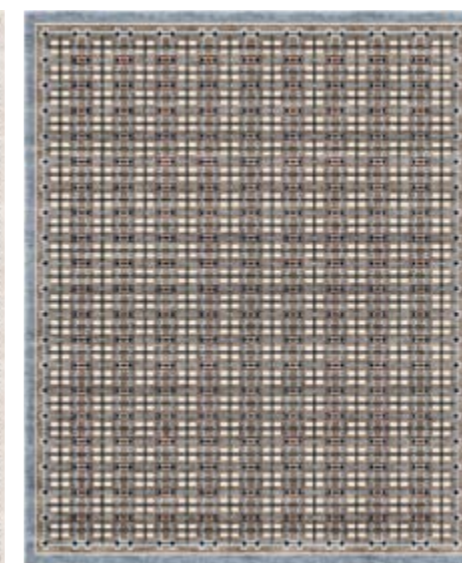
Art.: TR 1384

Leleu Laurel Nude

Leleu Chivarly Grey



Art.: TR 1384



Art.: TR 1385

Hand-knotted
wool & silk

1.5 x 2.45 m
2.5 x 3.0 m
2.7 x 3.6 m
3.0 x 4.0 m
100 knots
height 4 mm





Hand-knotted
wool & silk

1.21 x 3.55 m
150 knots
height 4 mm

Art.: TR 1459



Olympus



Notos



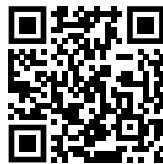
Hand-knotted
wool & silk

1.38 x 2.6 m
150 knots
height 4 mm

Art.: TR 1460



Thank you for sharing our passion for Art and Design.
Sincerely yours, Tapis Rouge.



info@ateliertapisrouge.com
ateliertapisrouge.com



All designs contained within this catalogue are subjects to copyright ©Tapis Rouge. All rights reserved. No part of this publication may be reproduced, stored in a retrieval system or transmitted in any form or by any means, electronic, mechanical, photocopying, recording or otherwise.