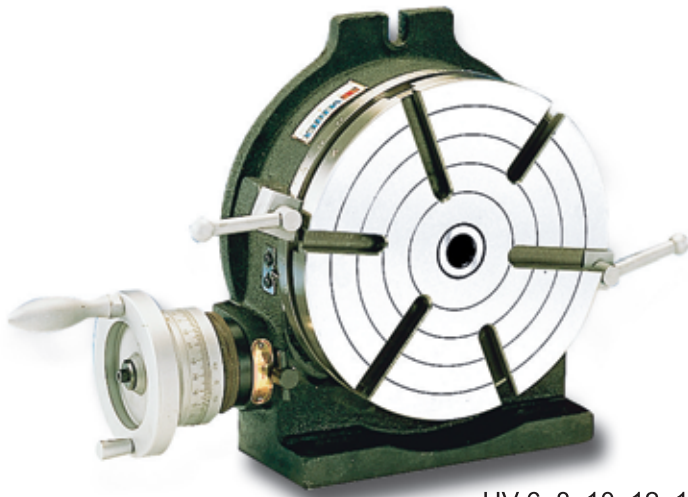




Horizontal/Vertical Rotary Table

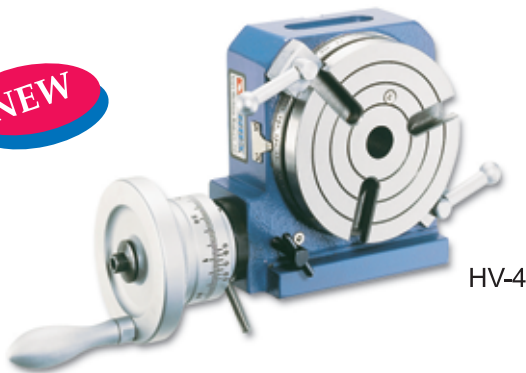


HV-6, 8, 10, 12, 14, 16

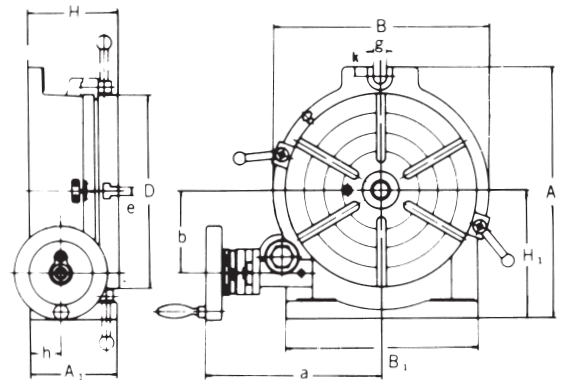
Special Accessories (Details on page 2)



NEW



HV-4



Unit:mm/inches

Order No. & Dimensions

ORDER NO.	Table			Base dimension			Width of T-slot		Bolt slots	Center sleeve	Gross Weight kg/lb wooden case(W) Caron(C)	Meas. CFT	CODE NO.
	Outer diameter		Height	H1	A	B	e	Type					
	A1	D	H										
HV-4	70	110	80	85	145	115	11	⊕	12	MT-2	(C) 7.5	0.3	1001-000
HV-6	78 3.07	150 5.91	80 3.11	100 3.94	200 7.87	160 6.30	11 0.43	⊕	15 0.59	MT-2	(C) 13	0.4	1001-001
HV-8	100 3.94	200 7.87	105 4.13	135 5.31	265 10.43	220 8.66	14 0.55	⊕	17 0.67	MT-3	(C) 26	0.8	1001-002
HV-10	110 4.33	250 9.84	115 4.53	165 6.50	325 12.80	280 11.02	14 0.55	⊗	17 0.67	MT-3	(C) 37	2	1001-003
HV-12	130 5.12	300 11.81	135 5.32	195 7.68	388 15.27	330 12.99	16 0.63	⊗	18 0.71	MT-4	(W) 70	2.6	1001-004
HV-14	130 5.12	350 13.78	140 5.51	230 9.06	450 17.72	380 14.95	16 0.63	⊗	18 0.71	MT-4	(W) 93	3.2	1001-005
HV-16	150 5.90	406 15.98	155 6.10	255 10.03	500 16.69	430 16.93	16 0.63	⊗	18 0.71	MT-4	(W) 122	4.2	1001-006

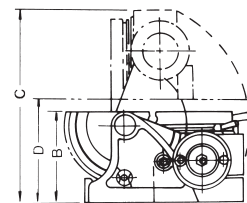
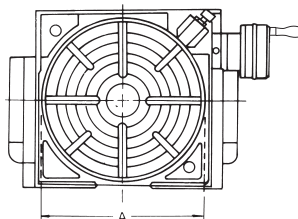
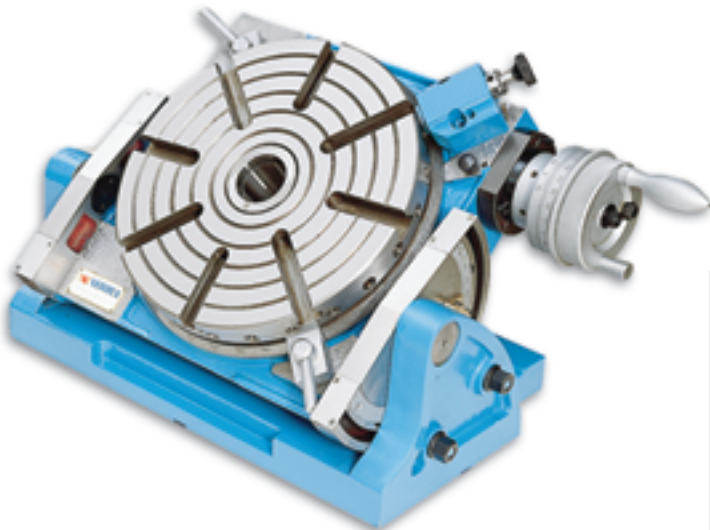
1. Table is made of high density Meehanite and use "HEIDENHAIN" electronic equipment to inspect angle to assure the excellent quality and durability.
2. Use excellent machining center to process. Spindle end be applied accuracy bearing. Can be assured to keep very steady under load cutting.
3. Worm is hardened and ground. The ratio is 90:1. The work table is graduated a full 360° so that one turn of the handle moves the table through 4°. Micro collar is graduated in steps of 1' min. And vernier scale makes settings down to 10 seconds possible.
4. These Rotary Tables are popular for their excellent performance, practical design and reasonable cost. they are widely used for circular cutting work, angle setting, boring, spot-facing and similar work.
5. Used the Key guide block, the center can be corrected both quickly and accurately.

Test Report

ITEM NO.	TESTING OBJECTIVE	VARIATION(INCHES)(MM) MAXIMUM TESTED
1	FLATNESS OF CLAMPING SURFACE(CONCAVE)	.0006(0.015)
2	PARALLELISM OF CLAMPING SURFACE TO BASE	.0008(0.02)
3	SQUARENESS OF CLAMPING SURFACE TO ANGLE FACE	.0008(0.02)
4	TRUE RUNNING OF CLAMPING SURFACE	.0006(0.015)
5	TRUE RUNNING OF CENTER HOLE MEASURED AT HOLE EDGE	.0008(0.02)
6	INDEXING ACCURACY OF DIRECT INDEXING MECHANISM MAXIMUM CUMULATIVE SPACING ERROR	45"



Universal Tilting Rotary Table



Order No. & Dimensions

ORDER NO.	VU-300
TABLE DIAMETER A	300mm
TABLE HEIGHT (horizontal) B	185mm
TABLE O/A HEIGHT (VERTICAL) C	370mm
CENTER HOLE	MT5
CENTER HEIGHT (vertical) D	208mm
DIRECT INDEXING	24-div.
GEAR RATIO	90:1
WEIGHT(G.W.)	102kg
WEIGHT(N.W.)	93.4kg

ORDER NO. VU-300 **CODE NO. 1001-010**

This is an accurate and slidly designed table for use on milling, boring and other machine tools. This table allows indexing, facing and other work to be carried out rapidly with extreme precision.

Tilting range 90 degrees from horizontal to vertical position, 1 rotation of handle equals 3 degrees, 5 minutes tilting reading.

- 10 Second Vernier Scale.
- Table Dial 1 Minute Graduations.
- Fast Degrees: Dividing Notch Pin & 24 Holes in 15 Degrees Around The insures Rapid Accurate Spacing.
- Minimum Set-Up time.
- Rugged Construction.

SPECIAL ACCESSORIES

1.DIVIDING PLATE DP-5

2.TAILSTOCK

TSU-1 HEAVY-DUTY TYPE

TSU-2 ECONOMICAL TYPE

ORDER NO.	TSU-1
CODE NO.	1001-020
WEIGHT	23kg

ORDER NO.	TSU-2
CODE NO.	1001-021
WEIGHT	12kg



SPECIAL ACCESSORIES

A.DIVIDING PLATES



B.TAILSTOCK



TS-1

Unit:mm

*DP set include index plate. crank handle, 3 pcs screw, sector, & U Washer.

1 carton with 1 set. Gross weight:3.5kgs.

Meas.:0.13 CFT.

Number of the holes of Dividing Plates

ORDER NO.	WEIGHT	CODE NO.
*DP-1 for HV-4 HV-6 VU-100/150	1.4kg	1001-030

A-PLATE	15,16,17,18,19,20
B-PLATE	21,23,27,29,31,33
C-PLATE	37,39,41,43,47,49

ORDER NO.	WEIGHT	CODE NO.
*DP-2 for HV _{RT} -8 VU-200	4.5kg	1001-031
DP-3 for HV _{RT} -10,12,14,16	4.5kg	1001-032
DP-4 for CS-6,8	4.5kg	1001-033
DP-5 for VU-300	4.5kg	1001-034

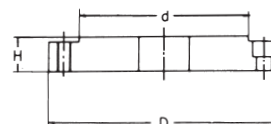
A-PLATE	26,30,34,38,41,44,47,51,57 28,32,37,39,43,46,49,53,59
B-PLATE	61,67,71,77,81,87,91,97 63,69,73,79,83,89,93,99

C.FLANGE



FLT-0 For VSC-5
FLT-1 For VSC-6
FLT-2 For VSC-7
FLT-3 For VSC-8

ORDER NO.	adjustable highest lowest	used of model	G.W kg	Meas. CFT	CODE NO.
TS-1	110 75	HV-4,HV-6,VSI-4 BS-0,VU-100 VU-150,VST-5	3.9	0.4	1001-022
TS-2	145 115	BS-1,CC-6 CS-6,HV-8 VU-200	12	0.4	1001-023
TS-3	200 130	CS-8,HV-10 HV-12	13.5	0.4	1001-024
TS-4	260 190	HV-14 HV-16	20	0.7	1001-025



Unit:mm

ORDER NO.	D	d	H	used of model	WEIGHT	CODE NO.
FLT-0	138	100	20	RT-HV- 6,8	1.9	1001-040
FLT-1	170	130	21	RT-HV- 8,10	3.3	1001-041
FLT-2	195	155	24	RT-HV-10,12,14	5.2	1001-042
FLT-3	210	160	24	RT-HV-12,14,16	4.9	1001-043

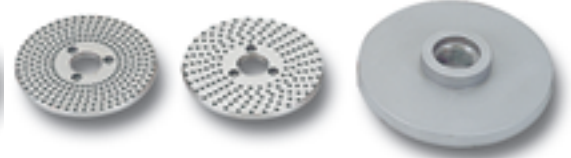


Semi-Universal Dividing Head



ORDER NO.	WEIGHT	CODE NO.
BS-0	20kgs	1001-050
BS-1	33kgs	1001-051

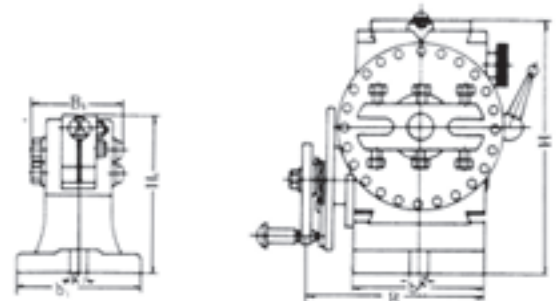
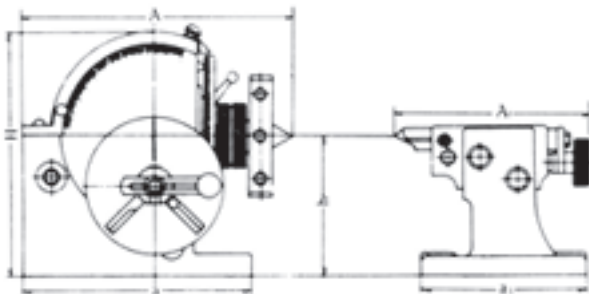
Standard Accessories



THREAD SPINDLE: BS-0. 1½ -8TPI
BS-0. 1½ -8TPI

Dividing Plate A,B,C

Numbers of hole	Plate A	15	16	17	18	19	20
	Plate B	21	23	27	29	31	33
	Plate C	37	39	41	43	47	49



Semi-Universal Index B & S Type
No.0 No.1(Head-stock):

Unit:mm/inches.

ORDER NO.	A	B	H	h	a	b	g	TAPER OF CENTER	Diameter of spindle hole
BS-0	189 7 7/16	140 5 5/8	173 6 13/16	100 3 15/16	160 6 15/64	91 3 37/64	13 33/64	MT-2	18
BS-1	293 11 17/32	156 6 9/64	220 8 2/32	128 5 3/64	207 8 5/32	114 4 31/64	16 5/8	MT-3	20

Semi-Universal Index B & S Type
No.0 No.1 (Tail-Stock):

Unit:mm/inches

ORDER NO.	A1	B1	H1	h	a1	b1	g1
BS-0	167 6 37/34	80 3 5/32	107.5 4 19/64	100 3 19/16	130 5 1/8	92 3 2/8	13 33/64
BS-1	191 7 33/64	88 3 15/32	137 5 25/64	128 5 3/64	150 5 29/32	108 4 1/4	16 5/8

1. Dividing Head can divide in any angle by the direct, indirect, or different methods. The ratio between the worm and the worm gear is 40:1.
2. Hardened and ground spindle is rigidly held in a taper roller bearing. Worm is hardened and ground also.
3. The swivel head can be locked of any angle from 10° below horizontal to 90° vertical-precision fitting to base assures smooth rotation.
4. All models have threaded spindle nose and 24 hole dividing plate with easy conversion to fast direct indexing on numbers 2, 3, 4, 6, 8, 12, and 24.
5. Easy indexing of all numbers from 2 to 50 and many numbers from 52 to 380. Model BS-2 is also equipped for different indexing of all numbers from 2 to 380, and for spiral cutting.
6. Accurate precision, little backlash, fine appearance and strong structure so can assure smooth rotation.



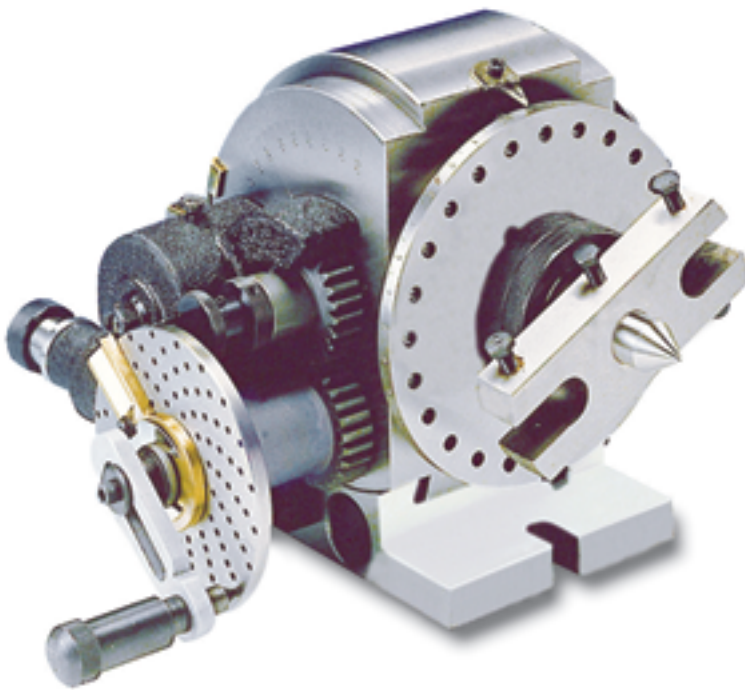
The state of
BS-0 fitted with 5" 3-Jaw Chuck



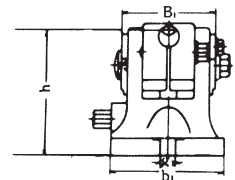
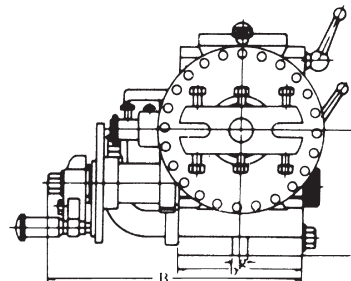
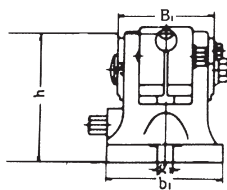
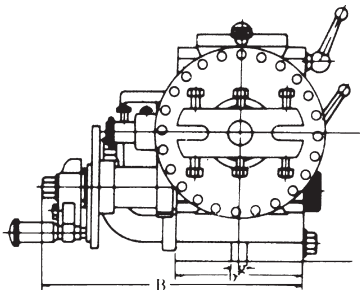
Universal Dividing Head

ORDER NO.	WEIGHT	CODE.NO.
BS-2	65kgs	1001-052

Standard Accessories



THREAD SPINDLE: 2 1/4"-8TPI



Universal Index B & S Type No.2 (Head-stock)

Unit:mm/inches.

ORDER NO.	A	B	H	h	a	b	g	Taper of center	Spindle hole
BS-2	365 14 13/32	272 10 45/64	236 9 13/64	132.7 5 15/64	213 5 29/64	134 5 9/32	16 5/8	MT-4	25.4 1

BS-2(Tail-stock)

Unit:mm/inches.

ORDER NO.	A1	B1	H1	h1	a1	b1	g1
BS-2	205~255 8 5/64 ~ 10 5/64	86 3 15/32	139 5 15/32	132.7 5 15/64	175 6 57/64	124 4 7/8	16 5/8

ORDER NO.	Gross Weight kg	Meas. CFT	Applicable Chuck
BS-0	(C)20	0.8	4" OR 5"
BS-1	(C)33	1.3	5" OR 6"
BS-2	(C)65	3.4	6" ,7" OR 8"

TEST REPORT

ITEM NO.	TESTING OBJECTIVE	VARIATION (INCHES)(MM) MAXIMUM TESTED	
1	TRUE RUNNING OF CENTER	0.0006(0.015)	
2	TRUE RUNNING OF INSIDE TAPER OF DIVIDING SPINDLE (1) MEASURED AT SPINDLE NOSE (2) MEASURED AT ARBOR 8-IN. LONG	(1)0.0004(0.01) (2)0.0012(0.03)	(1) (2)
3	AXIAL MOVEMENT OF DIVIDING SPINDLE	0.0004(0.01)	
4	DIVIDING ACCURACY OF WORM DRIVE MAXIMUM CUMULATIVE SPACING ERROR	1'30"	



Super Indexing Spacer



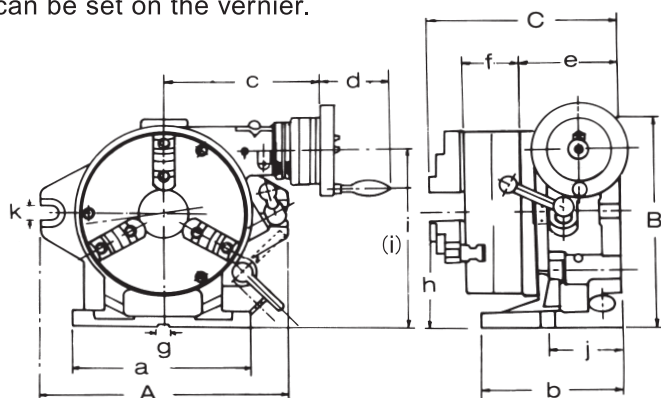
Special Accessories

The same as Rotay table
Please see page A2



CS-8 with VSK-8 3-JAW MASKING PLATE & FACE PLATE

This index combines the advantages of the Super Index with those of a worm-gear index. When mounted on a milling, boring or other machine tool it can carry out single-purpose indexing and indirect indexing using the worm-drive mechanism. Disengaging the worm drive the 24-notch master plate permits 2,3, 4,6,8,12 and 24 dividing in the same manner as the Simple Index. When the chuck is removed the unit can be used as a horizontal and vertical type rotary table. The operating handle to rotary table worm gear reduction ratio is 1:90. The operating handle collar is graduated 'in one minute, and readings down to ten seconds can be set on the vernier.



The state of CS-8 fitted with Face Plate & Dividing Plate

Order NO. & Dimensions

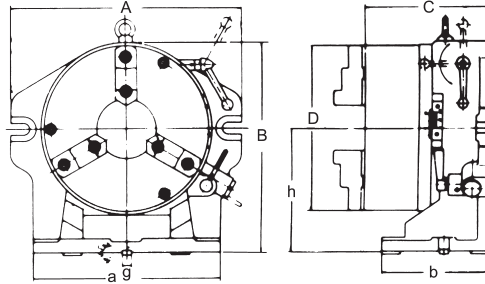
Unit:mm

ORDER NO.	Numbers of dividing	Chuck				Face plate			A	B	C	a	b	c	d	e	f	g	h	i	j	k	Gross Weight kg	Meas. CFT	CODE NO.
		Outer diameter	Inner jaw	Outer jaw	Inner dia	Outer dia	Thickness																		
CS-6	2,3,4,6	167 VSK-6	4~42	10~156	44	203	50	250	235	221	220	150	184	82	112	66	16	130	186	80	18	(W)50	1.2	1001~060	
CS-8	8,12,24	210 VSK-8	4~62	10~180	63	254	58	310	285	243	225	160	201	82	125	75	16	155	232	90	18	(W)79	3.1	1001~061	

(W)Wooden Case (C)Carton Case



Simple Indexing Spacer



Special Accessories



Order No. & Dimensions

Unit:mm

ORDER NO.	Dividual number	A	B	C	D	a	b	h	Inner jaw	Guide block g	Outer jaw	Diameter of hole(truuet)	Diameter of hole(truuet)	Gross weight kg	Meas. CFT	CODE NO.
CC-6	2. 3. 4. 6	260	218	156.2	167	220	130	130	4~42	16	10~156	44	36	(C)36	0.9	1001~062
CC-8	8. 12. 24	312	257	173.3	200	258	148	155	4~62	16	10~180	63	63	(C)51	1.3	1001~063

- 1.The center through hole is big to be suitable for the large and long workpiece.
- 2.Hardened and ground 24 position master plate, can index the special angle of 15 with excellent accuracy.
- 3.CS-Type can be used with 2 pcs type 3-Jaw Chuck. And to do similar work. as rotary table when it match with face plate.
- 4.Rapid indexing and easy operation. It's a sharp equipment for mass-production.
- 5.Super Spacer index include 3 jaw chuck, Face plate dia. 10",250mm Masking Plates 2,3,4,6,8,12.
- 6.Simple index include 3-jaw chuck, Masking Plates 2, 3, 4, 6, 8, 12
- 7.Used the key guide block, the center can be corrected both quickly and accurately.

STANDARDS OF ACCURACY for Simple Index for Super-Dex.

NO.	Testing Objective	Tolerances Unit: inches Permitted Max.
1	Parallelism of table surface to base per 12"	.0006
2	True running of axial movement of table surface	.0006
3	True running of center boss	.0004
4	Squareness of base to angle face per 12"	.0008
5	True running of chuck center	.0012
6	Dividing accuracy individual spacing error	45"



Precision 3-Jaw Scroll Chuck

•Detail specification shown on page E5.E6



- 1.Internal jaws and External Jaws may be used interchangeably.
- 2.This type of chuck is suitable for the operation of mass-production. It is durable and economical.

Reversible type



ORDER NO.
VSK-6 SUIT FOR CS-6 , CC-6
VSK-8 SUIT FOR CS-8 , CC-8

For indexer, The fixing hole is from front.

- 1.This type of chuck have wide scope of applications. the hard jaws are suitable for heavy cutting. the soft jaws are suitable for light cutting they maybe used alternately.
- 2.Hard jaws may be used as both internal jaws and external jaws.

ORDER NO.

VSC-5 SUIT FOR BS-0 OR HV-6
VSC-6 SUIT FOR BS-1 OR HV-8,10
VSC-7,8 SUIT FOR BS-2 OR HV-10,12,14
VSC-10 SUIT FOR HV-14,16



Precision Index Table



2 PCS hirth coupling

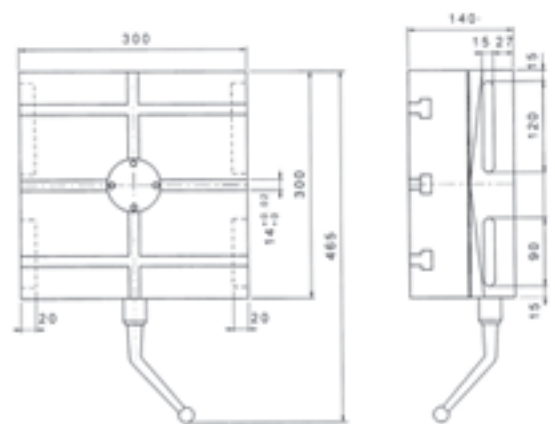
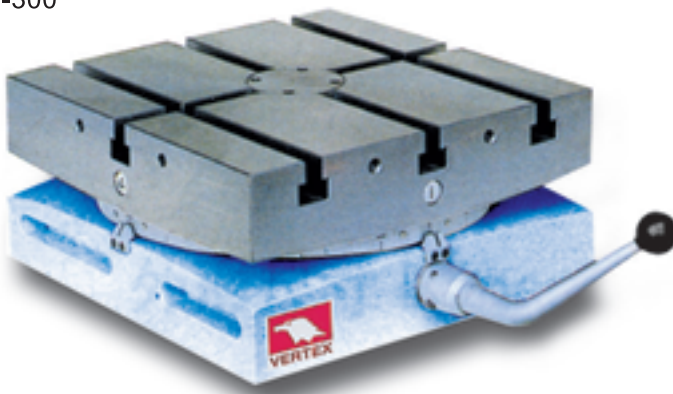
ORDER NO.	VIT-300-15	VIT-450-1	VIT-600-1	VIT-700-1	VIT-800-1	VIT-1000-1	VIT-1200-1	
		VIT-450-5	VIT-600-5	VIT-700-5	VIT-800-5	VIT-1000-5	VIT-1200-5	
Table size LxW(mm)	300x300	450x450	600x600	700x700	800x800	1000x1000	1200x1200	
Height(mm)	140	170	200	220	280	300	340	
Spindle hole(mm)	-	ø30	ø40	ø40	ø60	ø60	ø80	
T-slot(mm)	14	18	20	20	22	22	22	
Table rotating		Clockwise and counterclockwise						
Table Lifting up & Clamp down stroke(mm)	5	5	5	5	5	8	8	
Driving	Longitudinal	Manual						
	Revolving	Air Pressure 5~8kgs/cm ²						
Number of division(degree)	15°	1° or 5°						
Division(sec.)		±2						
Max.load weight in theory(kgs)	1200	2400	3400	3400	4500	6000	7000	
Allowable load weight(kgs)	500	1000	2000	2000	3000	5000	6000	
Clamping capacity(kgs)	-	2200	3200	3200	5400	5400	8100	
N.W.(kgs)	90	200	400	600	900	1200	2000	
CODE NO.	1°	1001-070(15)	1001-071	1001-072	1001-073	1001-074	1001-075	1001-076
CODE NO.	5°		1001-081	1001-082	1001-083	1001-084	1001-085	1001-086

- 1.The body is FC-35 cast iron, durable and will last longer without deformation.
- 2.Clamping/Unclamping by pneumatic, easy operation.
- 3.Powerful clamping design, allow heavy cutting and boring.

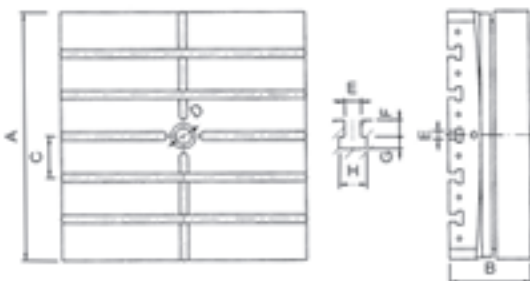
- 4.Build-in 2 pieces hirth coupling for positioning, indexing accuracy +/-3 sec, ensure a long-term operation.
- 5.Suitable for the high accuracy machining such as Boring-Milling, Grinding-Machine.

DIMENSION

VIT-300



VIT-450~1200



	VIT-450	VIT-600	VIT-700	VIT-800	VIT-1000	VIT-1200
A	450	600	700	800	1000	1200
B	170	200	220	280	300	340
C	100	100	125	100	150	200
D	30	40	40	60	60	80
E	18	20	20	22	22	22
F	16	20	20	23	23	23
G	12	14	14	15	15	15
H	28	35	35	38	38	38



Mini Rotary Table

ORDER NO. HV-4 CODE NO. 1001-000



OPTIONAL: 1.TAILSTOCK

ORDER NO.	TS-1
CODE NO.	1001-022



2.DIVIDING PLATE: DP-1

ORDER NO.	CODE NO.
*DP-1 for HV RT-4.6	1001-030



* DP set include index plate. crank handle, 3 pcs screw, sector, & U Washer.

1 carton with 1 set. Gross weight: 3.5kgs.

Meas.:0.13 CFT.

Number of the holes of Dividing Plates

A-PLATE	15,16,17,18,19,20
B-PLATE	21,23,27,29,31,33
C-PLATE	37,39,41,43,47,49

1. HORIZONTAL / VERTICAL TYPE
2. TABLE DIA.Ø110m/m. TABLE HEIGHT 26m/m.
3. CENTER BORE MT-2. SLOT ON TABLE 3 NOS.
4. CENTER HEIGHT 80m/m
5. BASE SIZE 145 x 130 x 80m/m
6. WORM IS HARDENED AND GROUND.
THE GEAR RATIO IS 90:1. THE WORK TABLE IS GRADUATED A FULL 360° SO THAT OF THE HANDLE MOVES THE TABLE THROUGH 4°. MICRO COLLAR IS GRADUATED IN STEPS OF 2' MIN.
7. G.W. 7.5KGS
8. CFT. 0.3CUFT

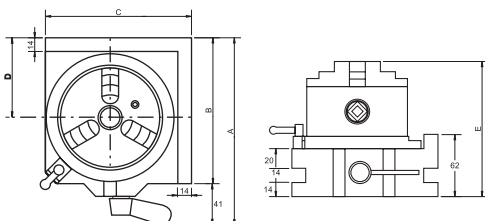


Economical Type Rapid Index



1. 3 JAW CHUCK VSC-4C, FOR VSI-4 / VSC-5C FOR VSI-5, THE BIG RANGE CLAMPING CAPACITY Ø3 – Ø100, IT'S BETTER THAN COLLET FIXING TYPE.
2. SIMPLE & RAPID OPERATION.
3. DIVIDUAL NUMBER 24-NOTCH (15° EACH)
4. TABLE SCALE 1°, FOR ANGULAR INDEXING.
5. TABLE BORE 30m/m.
6. HORIZONTAL / VERTICAL & 2 DIRECTION
7. SUIT FOR MILLING & DRILLING MACHINE USING.
8. OPTIONAL:TAILSTOCK TS-1, PLEASE SEE PAGE A2

(5C COLLET INDEXER
NON ECONOMICAL)



ORDER NO.	A	B	C	D	E	kgs	CODE NO.
VSI-4	187	146	146	80	135	10	1001-064
VSI-5	202	161	161	87	142	14	1001-065



Universal Tilting Rotary Table

NEW



- Tilting range 0-90 degrees from horizontal to vertical position, It is high rigidity.
- Minimum Set-up time has two screws to lock setting. Low profile body for bigger capability.
- Worm is hardened and ground. The ratio is 90:1. The work table is graduated a full 360° so that of the handle moves the table through 4°. Micro collar is graduated in steps of 2' min.
- The tailstock & Dividing plates are optional. The sizes is same as the rotary table, please see page A2.
- For arc or index cutting at milling machine, Grinding machine or drill Machine.....

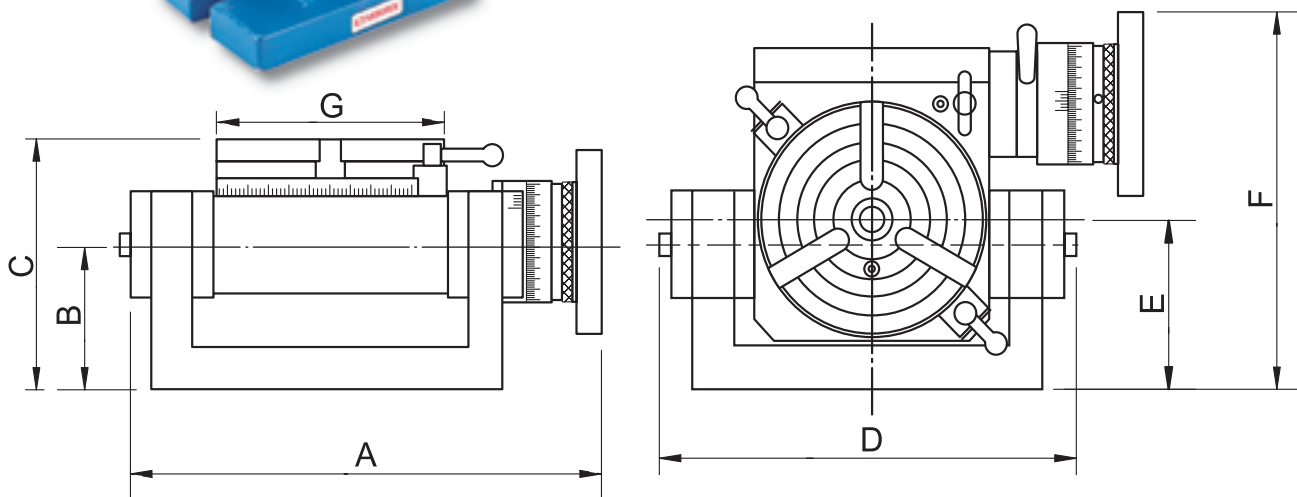
OPTIONAL: 1.TAILSTOCK

ORDER NO.	TS-1
CODE NO.	1001-022



2.DIVIDING PLATE: DP-1

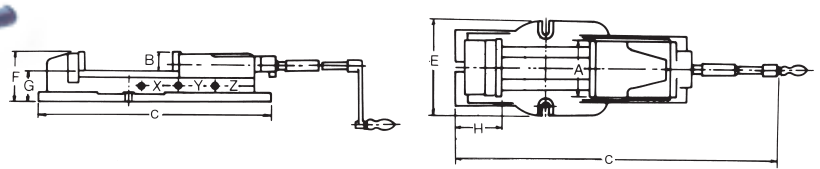
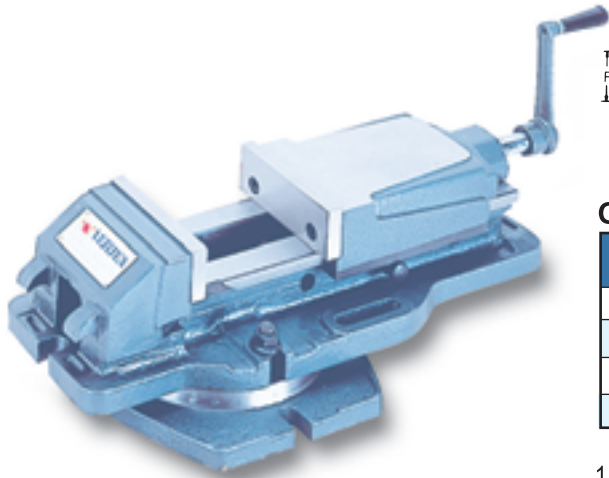
ORDER NO.	CODE NO.
*DP-1 for VU-100, 150	1001-030
*DP-2 for VU-200	1001-031



ORDER NO.	A	B	C	D	E	F	G	SUITFUL TAILSTOCK	SUITFUL DIVIDING PLATE	WEIGHT kgs/cuft	CODE NO.
VU-100	228	68	117	202	80	177	100	TS-1	DP-1	13.5kgs/1.5	1001-011
VU-150	266	75	140	246	90	216	150	TS-1	DP-1	21kgs/2.0	1001-012
VU-200	322	85	165	294	100	276	200	TS-2	DP-2	50kgs/2.5	1001-013



Hydraulic Machine Vise

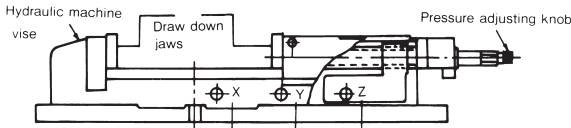


Order No. & Dimensions

Unit:mm

ORDER NO.	A	B	C	D	E	F	G	H	Max. Clamp Force	G.W.(kg)	Meas CFT	CODE NO.
VH-4	100	36	525	430	160	94	60	100	2500kgs	(C)28	0.8	1002-001
VH-5	127	46	670	540	185	118	72	117	4500kgs	(C)47	1.5	1002-002
VH-6	150	51	800	620	240	133	82	125	4500kgs	(C)65	2.2	1002-003
VH-8	200	65	800	710	280	158	100	180	6500kgs	(W)110	3.6	1002-004

CLAMPING CAPACITY (3 STEPS CLAMPING POSITION FIG)

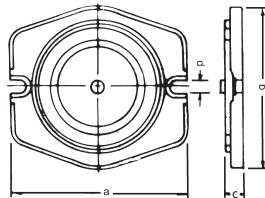


- 1.Ruggedly constructed for milling, drilling,shaping,grinding and many other machine shop applications.
- 2.Body is made of high quality ductile cast iron, resists deflection or bending.
- 3.Sliding bed ways flame hardened and ground.
- 4.Concealed spindle for protection against chips and dirt.
- 5.Hydra-booster system for maximum clamping pressure with minimum fore.
- 6.Quick of clamping & locking and easy of operation.
- 7.Accurance within 0.02mm.
- 8.Furnished with or without swivel base.
- 9.Hydra-booster system is guaranteed for using 2 years limited.
- 10.The hydraulic oil number is 68#.

CLAMPING CAPACITY Unit:mm

ORDER NO.	X	Y	Z
VH-4, VHT-4	0-60	57-115	110-170
VH-5	0-80	78-115	140-208
VH-6, VHT-6	0-100	98-200	195-300
VH-8	0-100	98-200	195-300

Swivel base

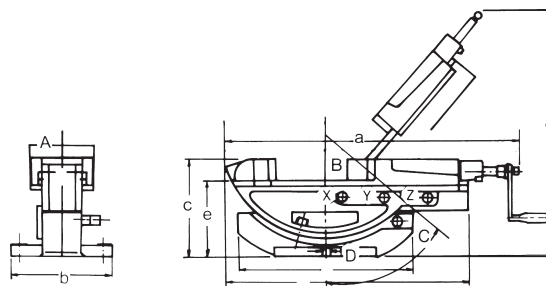


Unit:mm

ORDER NO.	a	b	c	d	G.W. (kg)	CODE NO.
HS-4	280	210	28	16	4	1002-010
HS-5	297	267	33	16	7	1002-011
HS-6	335	310	36	19	10	1002-012
HS-8	373	355	41	19	16	1002-013



Tilting Hydraulic Machine Vise



Unit:mm

ORDER NO.	A	B	C	D	a	b	c	d	e	Max. Clamp Force	G.W.(kg)	Meas CFT	CODE NO.
VHT-4	104	36	50°	14	523	162	177	MAX. 450	141	2500kgs	(W)33	1.2	1002-020
VHT-6	154	51	50°	14	801	242	237	MAX. 580	186	4400kgs	(W)81	4.4	1002-021

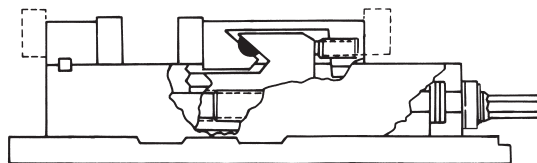
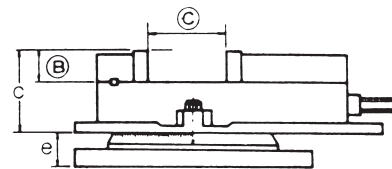
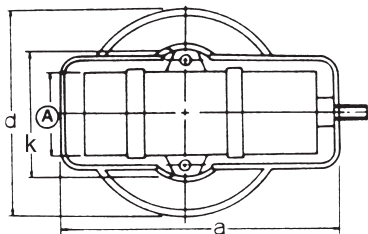
- 1.The same as characters of VH type.Swivel base same as VH type.
- 2.Tilting seat set by two locking screws, works in high stability.
- 3.Angle setting ranges from 0°~50°.Tilting degrees grabuated for easy reading.Swivel base graduated to 360° and fixable in any position.
- 4.THE (3 STEPS CLAMPING POSITION)SAME AS VH TYPE.
- 5.Accurance within 0.02mm
- 6.Hydra-booster system is guaranteed for using 2 years limited.



Ang-Fixed Milling Vise



VD-675, VD-810 is NEW
 VD-675 6" opened 7 1/2"
 VD-810 8" opened 10"



1. Use highest quality ductile Iron 80000 PSI for minimum bending.
2. The enclosed lead screw and sliding surface are hardened and grounded.
3. Highest clamping power. It's very accurate and durable.
4. This Vise is so designed that the horizontal force generated by tightening the handle pushes the semi-sphere within the movable jaw and thus thrusts the movable jaw downward.

Therefore, the workpiece does not move up, even if it is held at the top of the jaw plates.

5. Four setting positions of the jaw plates are available, widening the jaw plates opening.
6. The new VD675, VD810 have two major improvements: a wide opening jaw and a new stationary jaw that features an integral key larger fasteners which reduce deflection by 50%.

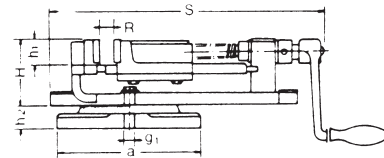
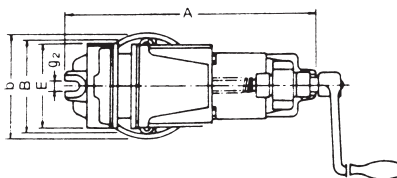
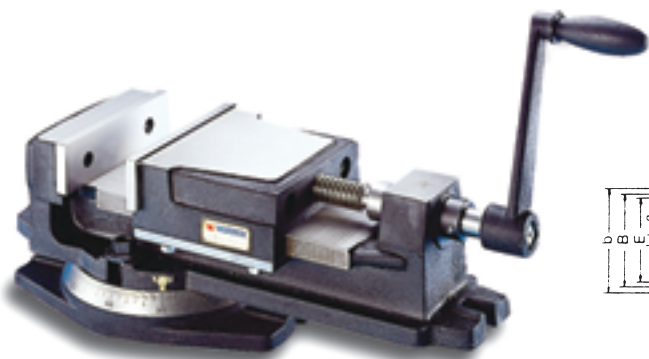
Order No. & Dimensions

Unit:mm/inches

ORDER NO.	A	B	C	a	k	c	d	e	f	Gross weight kg		Meas. CFT	CODE NO.
										plain	with swivel base		
VA-4	102 4 1/64	36 1 27/64	103 4 1/16	325 12 13/16	165 6 1/2	96 3 25/32	243 9 9/16	31 1 7/32	6 1/4	16 36	(C) 20	0.5	1002-030
VA-5	131 5 5/32	36 1 13/32	110 4 21/64	357 14 1/16	193 7 5/8	101 3 31/32	278 11	32 1 3/4	7 5/16	25 55	(C) 30	0.9	1002-031
VA-6	152 6	46 1 7/8	142 5 9/32	418 16 7/16	209 8 1/4	119 4 11/16	328 12 29/32	39 1 17/32	9 3/8	36 80	(C) 42	1.5	1002-032
VA-8	200 7 7/8	62 2 7/16	197 7 3/4	548 21 9/16	295 11 5/8	147 5 13/16	416 16 3/8	45 1 25/32	11 7/16	70 155	(W) 80	2.7	1020-033
VD675	152 6	38 1 1/2	190 7 1/2	552 21 3/4	295 11 5/8	134 5 5/16	381 15	47 1 7/8	11 7/8	37 82	(C) 43	1.5	1002-034
VD810	203 8	50 2	250 10"	552 21 3/4	295 11 5/8	134 5 5/16	381 15	47 1 7/8	11 7/8	70 155	(W) 102	2.7	1002-035



K-Type Milling Vise



1. It's a practical piece of equipment with excellent precision and a high quality finished.
2. Body, movable jaw and swivel base made of close-grained high tensile iron castings. Built for heavy duty machining and retained accuracy.
3. Jaw plates of hardened and ground tool steel.
4. It's the most suitable for the Milling, Grinding and Drilling.

Order No. & Dimensions

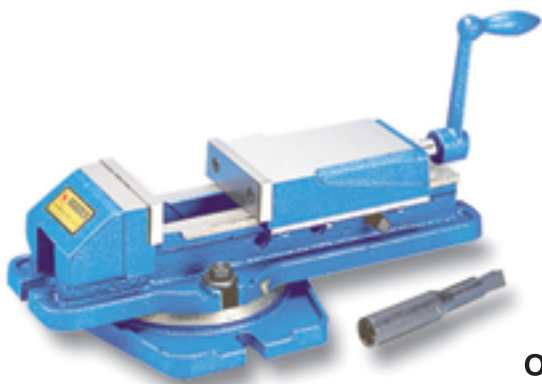
Unit:mm

ORDER NO.	E	A	B	H	R	S	a	b	h1	h2	g1	g2	G.W(kg)	Meas. CFT	CODE NO.
VK-4	100	267	106	75	62	295	160	114	30	25	13	13	(C)10	0.2	1002-040
VK-5	125	345	128	98	85	370	208	150	37	30	12	12	(C)17	0.5	1002-041
VK-6	150	421	160	105	114	462	245	175	40	40	16	16	(C)27	1.1	1002-042
VK-8	200	576	215	144	150	620	340	230	58	45	18	18	(W)57	1.5	1002-043

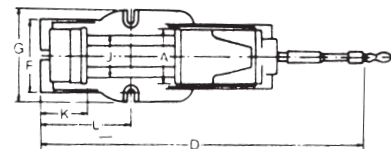
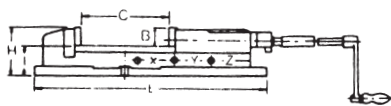


Super Open Vise

MECHANICAL TYPE



EXCEPT THE HYDRAULIC SYSTEM,
THE FEATURE IS SAME AS VH-TYPE



VJ-400 JAW OPENED 170mm
VJ-500 JAW OPENED 220mm
VJ-600 JAW OPENED 300mm

Order No.& Dimensions

Unit:mm

ORDER NO.	A	B	C	D	E	F	G	H	I	J	K	L	G.W. (kg)	Meas CFT	CODE NO.
VJ-400	100	36	170	525	430	130	160	94	60	78	100	155	(C) 21	0.8	1002-050
VJ-500	127	46	220	670	540	165	185	118	72	97	117	185	(C) 32	1.5	1002-051
VJ-600	150	51	300	800	620	200	240	133	82	116	125	247	(C) 45	2.2	1002-052



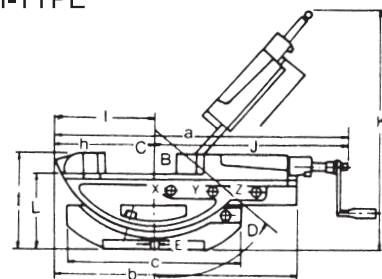
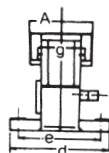
2-Way Angle Milling Vise

EXCEPT THE HYDRAULIC SYSTEM,
THE FEATURE IS SAME AS VHT-TYPE
VWT-4 JAW OPENED 100mm
VWT-6 JAW OPENED 300mm



VWT-4

VWT-6



Order No.& Dimensions

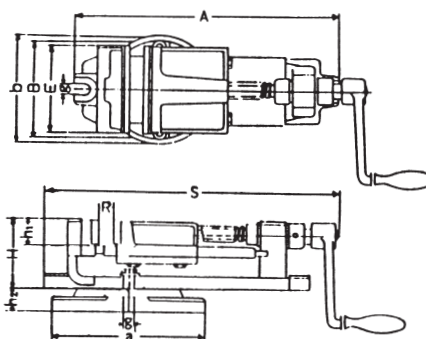
Unit:mm

ORDER NO.	A	B	C	D	E	a	b	c	f	h	l	L	G.W. (kg)	Meas CFT	CODE NO.
VWT-4	104	36	100	50	14	523	404	325	177	90	184	141	(C) 25	1.2	1002-060
VWT-6	154	51	300	50	16	801	585	415	237	121	241	186	(W) 80	4.4	1002-061



High Jaw Machine Vise

JAW HEIGHT 75mm
JAW OPENED 150mm

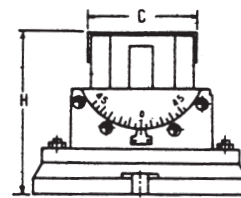
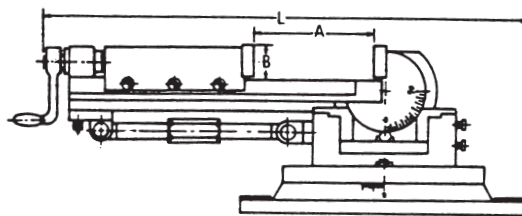


Unit:mm

ORDER NO.	E	A	B	H	R	S	A1	D	h1	h2	G	G1	WEIGHT	CODE NO.
V-606V	150	580	160	145	150	620	245	175	75	40	16	16	43kgs	1002-070



3-Way Angle Milling Vise



Order No. & Dimensions

Unit:mm

ORDER NO.	Jaw			H	L	Height at vertical position	Gross Weight kg	Meas CFT	CODE NO.
	Width	A	B						
VW-3	80	90	30	144	400	385	(C)21	0.7	1002-080
VW-4	106	105	38	172	460	470	(C)33	1.2	1002-081
VW-5	132	140	40	205	625	590	(W)53	1.6	1002-082

1. Angles can be set in 3 dimensions. Swivels 360° around base. The vise can be elevated through 90° from the horizontal to vertical. And also can be tilted on its lower angle base up to 45° in both right and left.
2. Tilting of any angle all keep the workpiece steady, smooth.
3. Particularly the clamping part of screw is strengthened by a bush made of gumetal.



2-Way Machine Vise



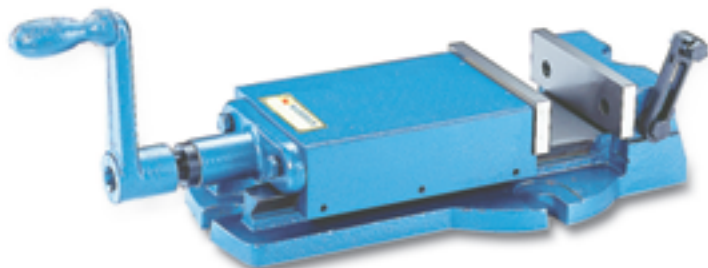
- heavy cast iron structure
- scales in both axis
- 360° swivel around Z-axis
- 90° vertical and horizontal swivel mm

ORDER NO.	VWT-5
jaw width	125
jaw height	46
max. opening	100
alignment slot	16
height	160mm
L x W x H(OVERALL)	410x315x160
WEIGHT	35kg
PACKING	420x290x210
CODE NO.	1002-090



Heavy Duty Machine Vise

ENGLAND TYPE



- Vice body made from high grade iron for rigidity.
- Low overall height.
- Moving jaw runs in long prismatic slides with provision for wear adjustment.
- Hardened and ground steel jaw plates supplied as standard.
- Totally enclosed acme screw with three point location operating in a phosphor bronze nut.

ORDER NO.	VWA-160
Width of jaws	150
Max jaw opening	165
Depth of jaws	50
Overall size of swivel base	530x215
Overall height	100
Net weight (kg)	35
Packing(mm)	560x205x165
CODE NO.	1002-100



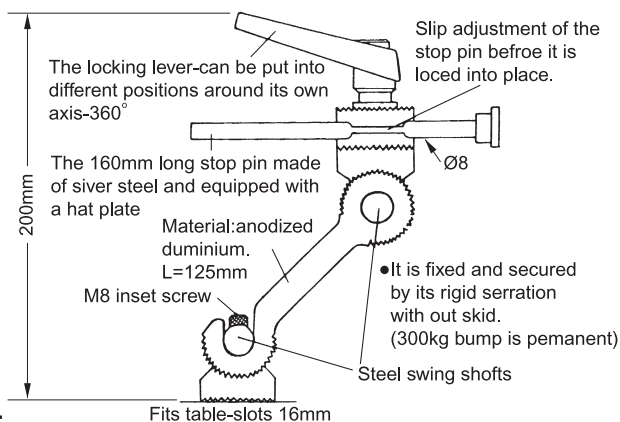
U/N Work Stopper



NON TEETH TYPE
ORDER NO. VWS-123
CODE NO. 1002-105
WEIGHT: 1kg



ORDER NO. VWS-125
CODE NO. 1002-106
WEIGHT: 1kg



Prisma Jaw

PRISMA JAW



ORDER NO.

VWS-VK-4.5.6.8 VWS-VW-3.4.5
VWS-VA-4.5.6.8 VWS-VMC-4.6
VWS-VH-4.5.6.8 VWS-VQS-3, 4, 5
VWS-VJ-400.500.600

ORDER NO.	WEIGHT	CODE NO.
VWS-VK-4	0.22kg	1002-110
VWS-VK-5	0.31kg	1002-111
VWS-VK-6	0.41kg	1002-112
VWS-VK-8	1.2kg	1002-113

ORDER NO.	WEIGHT	CODE NO.
VWS-VW-3	0.21kg	1002-120
VWS-VW-4	0.31kg	1002-121
VWS-VW-5	4.1kg	1002-122

ORDER NO.	WEIGHT	CODE NO.
VWS-VA-4	0.4kg	1002-130
VWS-VA-5	0.51kg	1002-131
VWS-VA-6	0.96kg	1002-132
VWS-VA-8	1.76kg	1002-133

ORDER NO.	WEIGHT	CODE NO.
VWS-VMC-4	4.1kg	1002-140
VWS-VMC-6	0.96kg	1002-141

ORDER NO.	WEIGHT	CODE NO.
VWS-VJ-400	0.3kg	1002-163
VWS-VJ-500	0.51kg	1002-164
VWS-VJ-600	0.94kg	1002-165

ORDER NO.	WEIGHT	CODE NO.
VWS-VH-4	0.41kg	1002-150
VWS-VH-5	0.71kg	1002-151
VWS-VH-6	0.91kg	1002-152
VWS-VH-8	1.81kg	1002-153

ORDER NO.	CODE NO.
VWS-VQS-3	1002-160
VWS-VQS-4	1002-161
VWS-VQS-5	1002-162

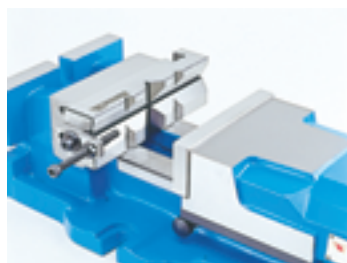


Universal Vise Jaws With Work Stopper



ORDER NO. VWSJ-4.5.6.8

1. Can be fixed on any vise jaw by the two screws on the side.
2. One jaw in multiple-function features.
3. V-type jaw can fix workpiece at horizontal and vertical position.
4. Can be performed as work stopper.



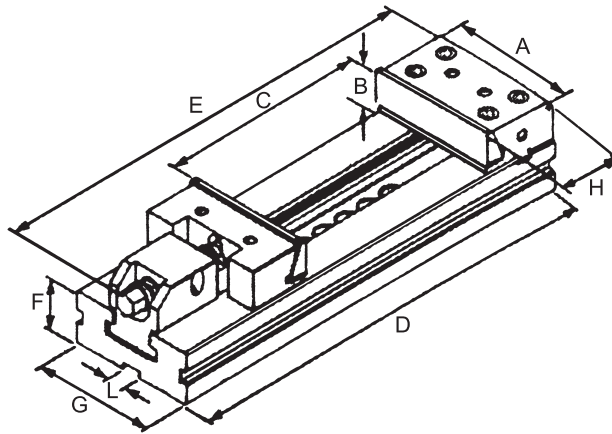
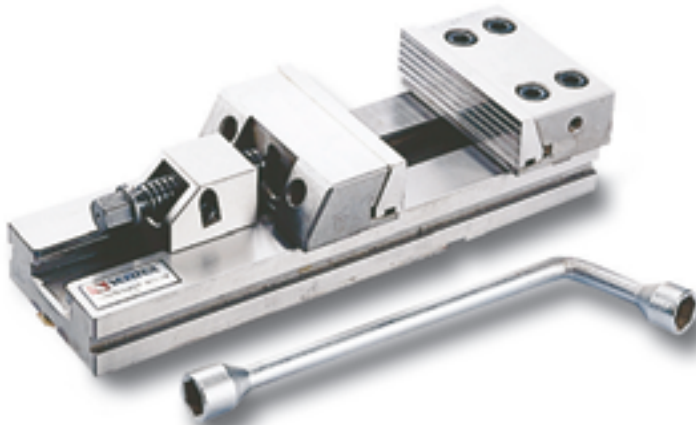
ORDER NO.I.D. Chart:

VWSJ-□—— VISE JAW SIZE
(Unit:inch)
└—— SYSTEM NO.

ORDER NO.	WEIGHT	CODE NO.
VWSJ-4	1.5kg	1002-170
VWSJ-5	1.7kg	1002-171
VWSJ-6	2kg	1002-172
VWSJ-8	4kg	1002-173



Modular Precision Machine Vises



FEATURES

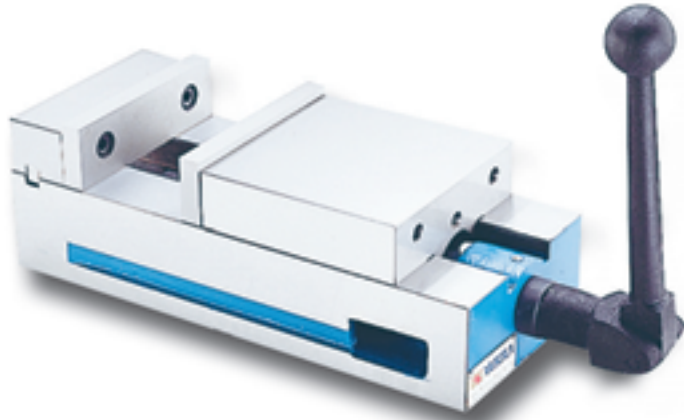
- High Accuracy
- Unlimited Clamping Range
- High Quality Alloy Steel
- High Clamping Pressure
- EACH ONE IS SAME AS HEIGHT.
- CAN BE USED MULTIPLE STYLE.
- No Length of Height Limitations
- No Jaw Lift
- Low Profile
- All Vises are Matched
- Swivel base be optional

MODULAR VISES are manufactured under rigid quality control. Only the most suitable materials are used, and the accuracy of even the smallest components is assured. As a result of the high standard construction **MODULAR VISES** can be depended upon to maintain their accuracy under the most severe operating conditions. The modular design and the concept of interchangeability makes possible a wide variety of set up combinations.

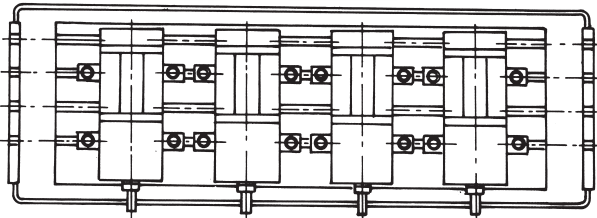
ORDER NO.	VMP-4	VMP-5	VMP-6	VMP-7A	VMP-7B	VMP-7C	VMP-8B	VMP-8C
A	100	125	150	175	175	175	200	200
B	30	40	50	60	60	60	65	65
C	100	150	200	200	300	400	300	400
D	275	350	426	455	555	655	595	695
E	325	146	530	620	620	620	718	718
F	35	40	50	58	58	58	70	70
G	75	96	125	145	145	145	170	170
H	78	78	90	97	97	97	114	114
I	16	16	16	16	16	16	16	16
KG	7	18	29	38	43	48	69	74
CODE NO.	1002-190	1002-191	1002-192	1002-193	1002-194	1002-195	1002-197	1002-198



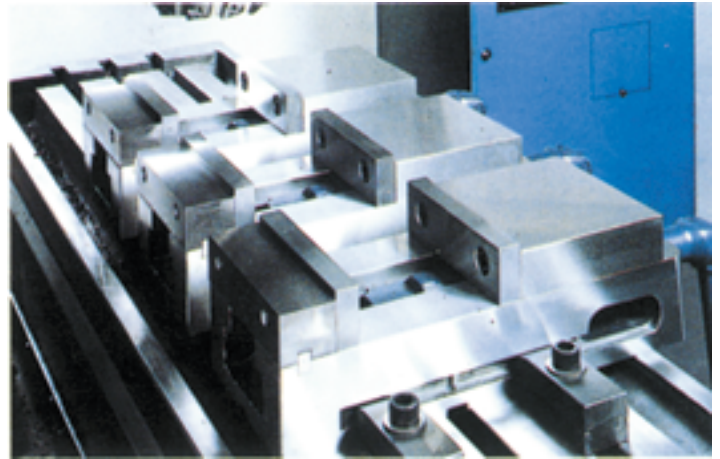
Lock-Fixed II Precision Machine Vise



Performed sided vertically.



Performed jointly.



ORDER NO.

VMC-4

VMC-6

A. With the ability of lock-fixed III 2,3,4,5,.

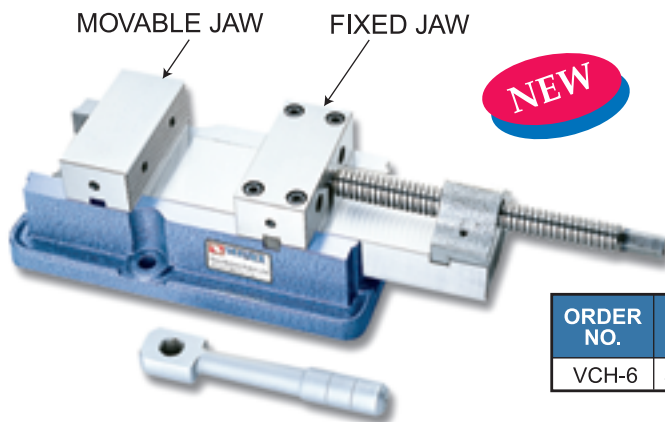
B. Use the semi-sphere segment principle.

C. When operate several vises (in a row) put on one machine bed, the using situation is showed as following:

ORDER NO.	JAW WIDTH	LENGTH	HEIGHT	JAW HEIGHT	JAW OPENING	KEY WAY	MEAS CUFT	WEIGHT (kg)	CODE NO.
VMC-4	101.6	343	89	31.5	100	14	0.4	14	1002-185
VMC-6	152.5	435	110	44	142	16	1.1	31	1002-186



Heavy Duty Milling Vise



FEATURES

A. Stationary front jaw

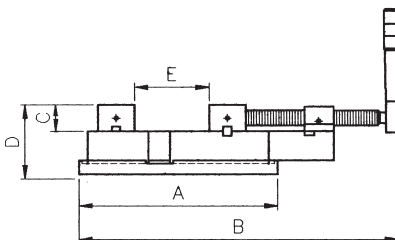
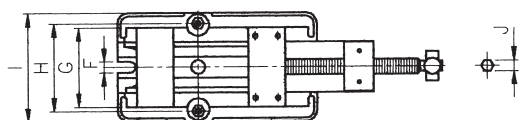
B. The back jaw moves along with the slide reducing the tendency towards deflection preventing the workpieces from tilting.

C. Jaw and body are steel construction

D. Hardened & ground on all sliding and contacting surface

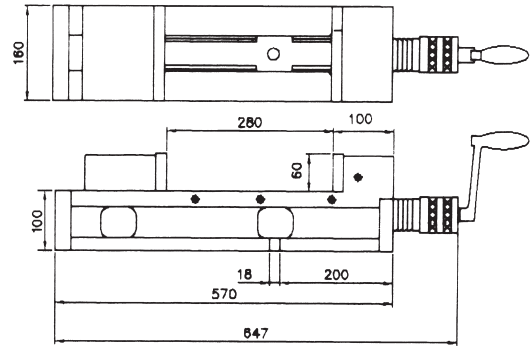
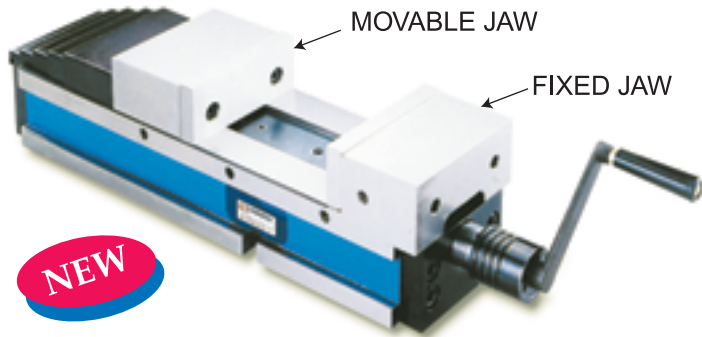
E. Ideal for CNC application.

ORDER NO.	A	B	C	D	E	F	G	H	I	J	G.W (kg)	CODE NO.
VCH-6	360	630	48	127	210	18	145	160	198	19	40	1002-199



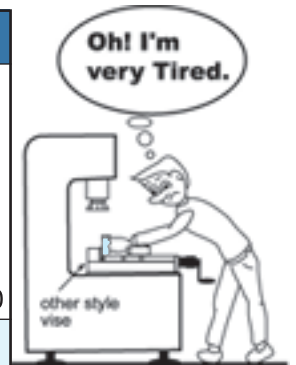


Convenience Hydraulic Machine Vise

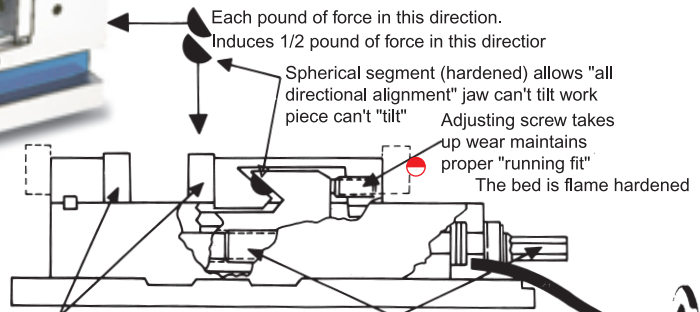
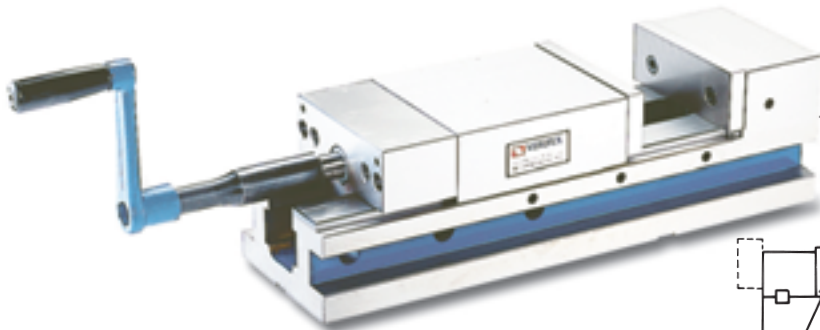


- Movable jaw located at outer end and "align surface" for workpiece is in front of operator. It is convenient for loading or unloading workpiece on such design of hydraulic vise.
- The overall length of this vise is shorter than other similar vises, but keep the same jaw opening. Save space on work table.
- Semi-spherical segment eliminates jaw lifting and workpiece tilting.
- Vise bed flame hardened to HRC 45 up is capable to obtain low weariness and last the high accuracy for long.
- Chip covers is applied on this vise to prevent from chips falling to Leadscrew and inside of vise.

ORDER NO.	VCH-160
WIDTH OF JAW	160mm
JAW OPENING	280mm
DEPTH OF JAWS	60mm
OVERALL LENGTH	647mm
CLAMPING FORCE	4500kgs
NET WEIGHT (KG)	60kgs
PACKING(MM)	700X185X180
CODE NO.	1002-200



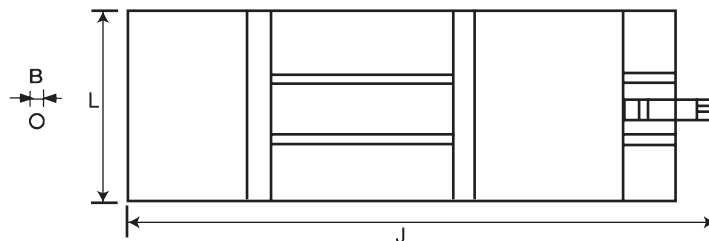
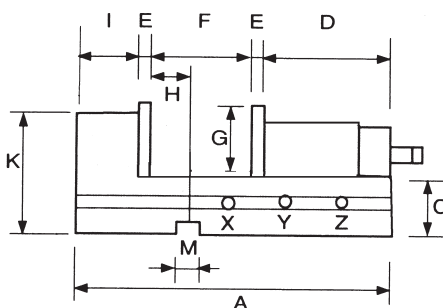
Hydraulic Ang-Fixed Vise



Moveable jaw plates (hardened and ground) increase capacity of 6" vise up to 14 1/2" in-out-side position (dotted lines)

Vies screw defies wear-enclosed for protection

Being thrust collar cuts friction and increases clamping pressure



ORDER NO.	A	B	C	D	E	F			G	H	I	J	K	L	M	CLAMPING FORCE	N.W.	CODE NO.
						X	Y	Z										
VAF-4	385	14	58	179	12.5	0-85	85-170	—	42	45	64.5	440	98	105	18	2500kg	22kg	1002-210
VAF-6	505	19	85	250	15.5	0-90	90-180	180-270	57	65	84.5	698	140	152	18	5000kg	50kg	1002-211
VAF-8	576	19	102	252	18.5	0-98	97-198	197-300	62	82	89.5	760	162	200	18	7000kg	80kg	1002-212



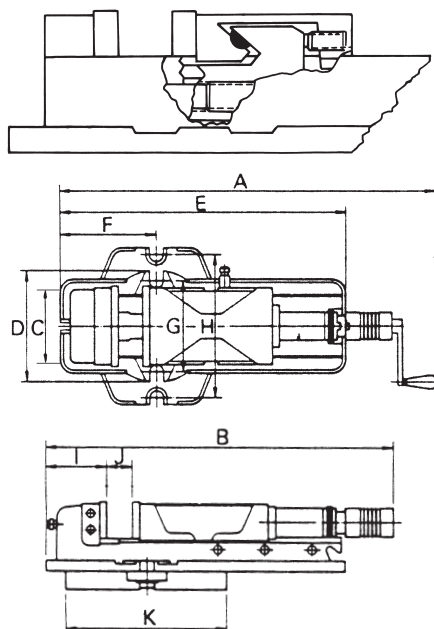
Hydraulic Machine Vise Build Out Type



FEATURES

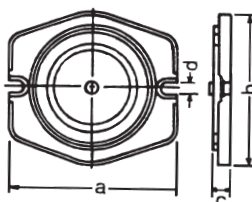
- Rigid material-vise body of ductile iron FCD 60JIS(equal to GGG 60) with 60kgs/mm² or 80,000 psi tensile strength.
- Vise bed flame hardened to HRC 45 and up takes up wear and maintain accuracy for long.
- For multiple use plural vises are available on tolerance of 0.01mm in the height of vise bed and in alignment of the clamping surface of the vise jaw at extra cost.
- Mechanical/hydraulic spindle without original clutch mechanism.
- Down thrust "Semi-sphere Segment" mechanism-eliminates jaw lift and work fillt.
- All surface ground.

Unit:mm



ORDER NO.	A	B	C	D	E	F	G	H	I	J	K	CLAMPING FORCE	N.W.	CODE.NO.
VHO-5	695 920	570 795	130	190	505	180	160	250	105	0- 220	260	3500kg	41kgs	1002-220
VHO-6	750 1060	625 935	160	240	625	208	196	300	125	0- 300	320	4000kg	63kgs	1002-221
VHO-8	830 1140	725 1035	200	280	700	265	240	360	165	0- 310	365	6000kg	102kgs	1002-228

Swivel Base Optional

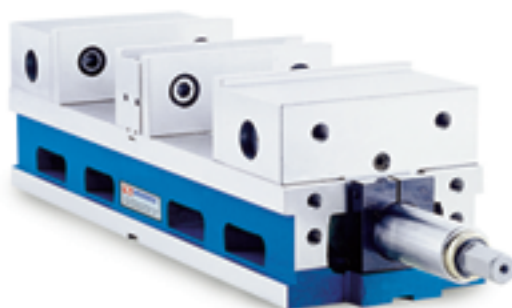


ORDER NO.	A	B	C	D	N.W.	CODE NO.
HSO-5	285	263	35	16	12.5 Kgs	1002-222
HSO-6	330	320	40	18	16.5 Kgs	1002-223
HSO-8	415	413	50	21	35Kgs	1002-229



Double Clamp Vise

**NEW DESIGN & UNIQUE CONSTRUCTION.
EXCLUSIVELY DESIGNED WITH COMBINATION OF
MACHINABLE FIXTURE JAWS AND HARD JAWS**



DOUBLE CLAMP SEAT:
One handle can simultaneously operate two movable jaws and clamps 2 pieces of workpiece of same size or different size or one large workpiece. This model can increase efficiency and productivity of CNC machine.

HIGH & EXCELLENT RIGIDITY.

The vise is made of FCD. 80000 PSI (55 kg/cm²) Ductile iron, and the slide ways are hardened to HRC45. The rigid construction prevents the base from distortion. Precision made to high accuracy standard.

1. The whold body is precisely grounded and height tolerance is within 0.025m/m(0.001"), therefore several vises can be lined p for production
2. The movable jaws provide alignment to workpiece without jaw lift.
3. The height of jaw plate is 30% higher than the other vise with the same size.
4. There are 6 kinds of clamping ways to meet workpieces of different shapes and sizes.

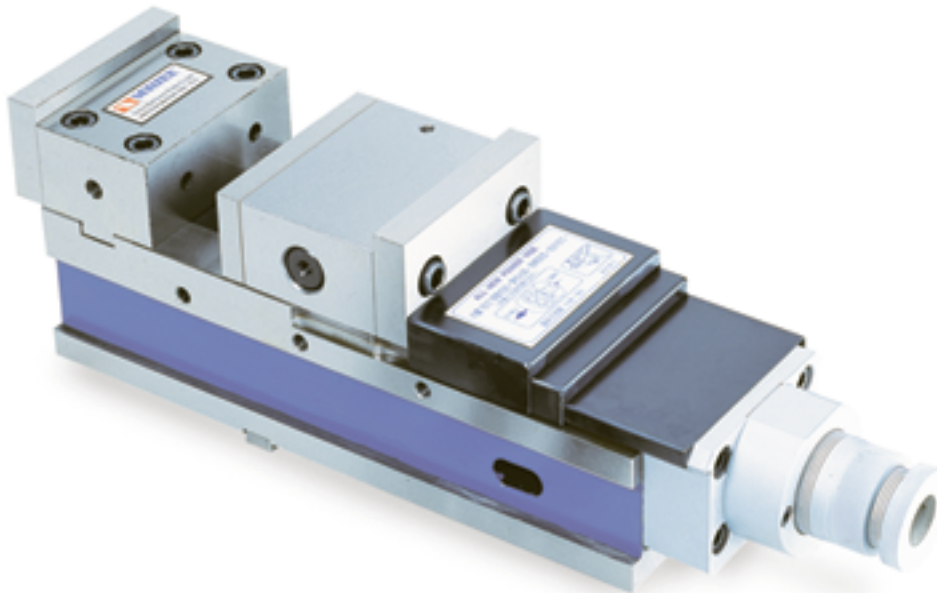
Unit:mm

ORDER NO.	A	B	C	D	a	b	c	H	e	f	g	h	i	j	k	l	m	Guide Block	Weight (kgs)	CODE NO.
VMC-4D	102	45	18-76	0-57	380	104	110	65	107	497	16	29	25	115	170	54	22.5	18	20	4005-020
VMC-6D	152	58	34-102	0-68	495	154	140	90	135	610	18	46	30	165	220	68.4	31.8	18	63	4005-021



Mechanical Power Vise

HIGH CLAMPING POWER AND LARGE JAW CLAMPING CAPACITY



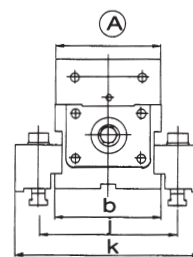
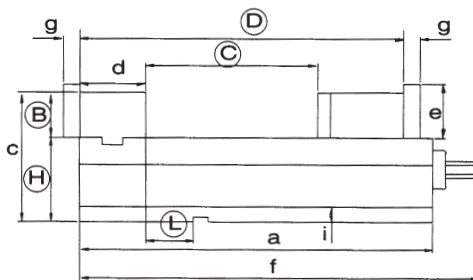
STANDARD ACCESSORIES



1. To solve all your clamping problems on your machining centers.
2. Tons of pressure can be applied to the workpiece with minimum operator's effort. Using the new POWER VISE", it can not release the workpiece until the operator manually releases it.
3. "Mechanical booster". Provides a steady clamping force against shocks and vibrations during the operations, since it clamps the workpiece resiliently with an aid of the "disc-springs" mounted inside.
4. Powerfull VMC-6Q clamping pressure can be increased up to 5500kg/cm²; VMC-5Q, 3500kg/cm²; VMC-4Q, 3000kg/cm² Clamping force freely adjusted with the guidance of graduation lines.

INSPECTION SPECIFICATION

NO.	Inspection Item	Per (100mm) 4"	Guaranteed
1	Parallelism:running face to bottom of bed.		0.01mm (0.0004")
2	Squareness:between running face and jaw plate.		0.03mm (0.0012")
※ 3	Squareness:both sides to fixed jaw plate.		0.02mm (0.0008")
4	Parallelism:keyways on bottom of bed to jaw plate.		0.02mm (0.0008")
5	Squareness:keyways on bottom of bed to jaw plate.		0.02mm (0.0008")
6	Parallelism:running face of the test block to bottom of bed.		0.02mm (0.0008")
	Lift can be controlled when clamping test block.		0.015mm (0.0006")



Unit:mm

ORDER NO.	A	B	C	D	a	b	c	d	e	f	g	j	i	k	H	L	Key way	Weight	CODE NO.
VMC-4Q	100	44	128	285	288	102	129	73	52	398	20	18	139	19	85 ±0.02	85 ±0.02	14	32 kgs	4005-001
VMC-5Q	125	53	203	382	385	127	153	78	63	508	20	18	164	216	85 ±0.02	85 ±0.02	18	49 kgs	4005-002
VMC-6Q	160	53	275	465	480	162	168	86	63	605	20	21	199	252	85 ±0.02	85 ±0.02	18	80 kgs	4005-003

* HORIZONTAL & VERTICAL 2 WAY VISE.

CLAMPING PRESSURE: VMC-4Q, 300kg/cm², VMC-5Q, 3500kg/cm², VMC-6Q, 5500kg/cm².



Precision Pneumatic Ang-Fixed Power Vise

Suitable for mass production and to be used on machine centers, milling machines, drilling machines and special purpose machines.



The greatest safety distance of clamping:
The switch speed is only 1.5 seconds, and the safety distance of clamping can be up to 8mm. We design the hand wheel safety line in addition for anyone to distinguish the clamping safety distance of tools from exceeding to limit easily by eyes.

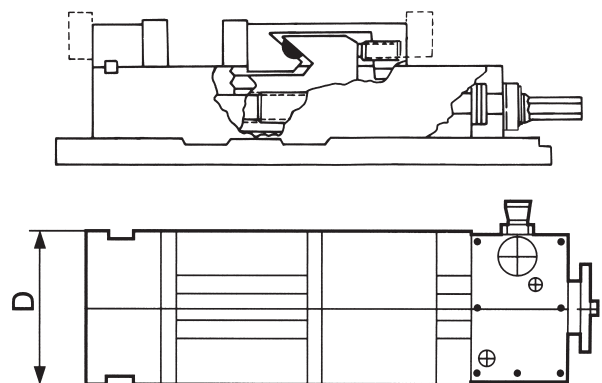
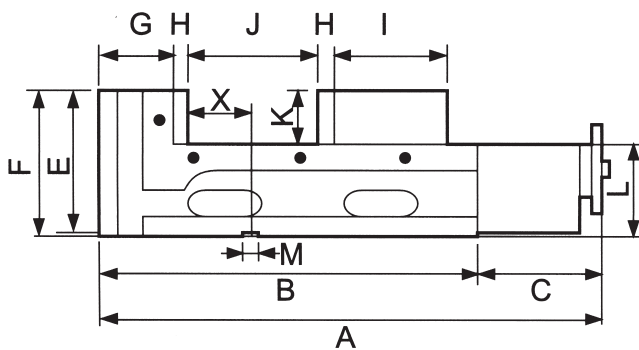
Down trust "semi-spherical segment" mechanism eliminates jaw liffing and work-piece liffing.



The material of the vise itself adopts the one-step design of highductility graphitized casting iron (FCD-60), and the starting rail of the two sides experiences hardening heat treatment (HRC-45*) that can assure good performance on precision, wear-resisting, and tension-resisting.

If the source of air pressure is under low pressure exertion of 8kgf/cm^2 , it can achieve the super strong clamping capacity of 9000kg/cm^2 . The clamping capacity from $0\sim 9000\text{kg/cm}^2$ can be freely set and adjust via pressure regulator. Automatically seeking the highest source of air pressure:

When the pressure regulator sets the regulator sets the required pressure, it will not be out of order because the source of air pressure is low.

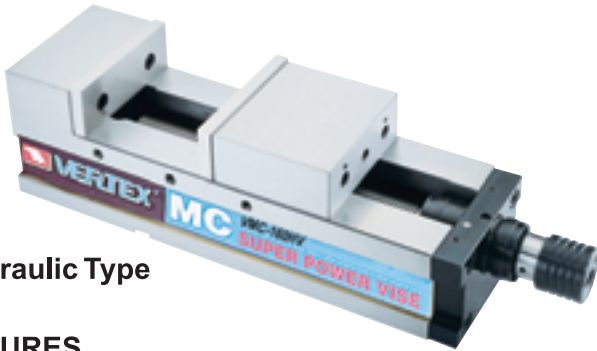


Unit:mm

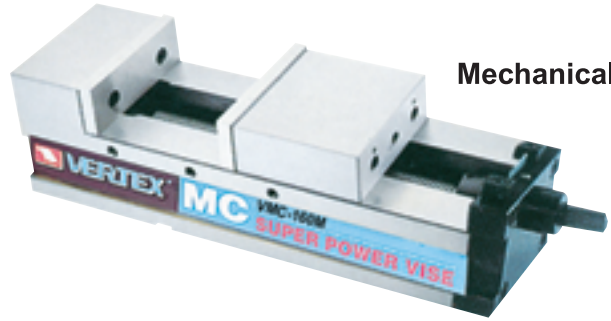
ORDER NO.	A	B	C	D	E	F	G	H	I	J	K	L	M	Gripping Force (kgf)	N.W. (kg)	G.W. (kg)	CODE NO.
VMC-5P	520	380	140	130	157	160	86	15	110	0-150	55	105	18	6000	45	50	4005-070
VMC-6P	540	400	140	160	160	163	86	15	120	0-160	58	105	18	6000	47	56	4005-071
VMC-6PL	630	490	140	160	160	163	86	15	120	0-250	58	105	18	6000	53	62	4005-072
VMC-7P	600	460	140	180	170	173	90	18	130	0-200	63	110	18	9000	65	72	4005-073
VMC-8P	610	470	140	200	170	173	90	18	140	0-200	63	110	18	9000	70	80	4005-074
VMC-8PL	710	570	140	200	170	173	90	18	140	0-300	63	110	18	9000	79	80	4005-075



MC Power Machine Vise for machining center



Hydraulic Type



Mechanical Type

FEATURES

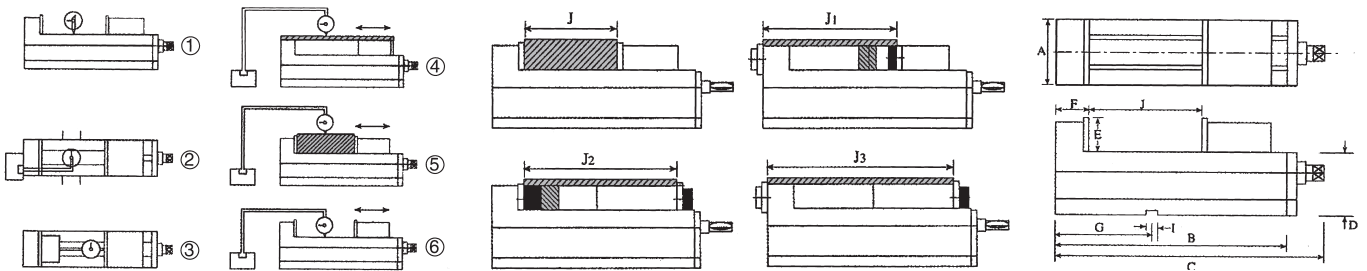
1. Angle fixed type super power precision hydraulic vise, suitable for vertical and horizontal combined cutting & processing machine for heavy cutting.
2. Angle fixed type spherical segment ball can produce the force for angle locking -- which can release the vise plate floating upward and make no slant of the workpiece.
3. Powerful material - cast iron, and has strong anti-tension, high abrasion, which can keep long durability for abrasion with high precision.
4. The slide surface of vise bench is treated by hardening above HRC45° which can keep long durability for abrasion with high precision.
5. Movable jaw adjusting screw can adjust the appropriate precision for the vise at any time.
6. Four setting positions of the jaw plate are available, widening the jaw plate opening.



Performed Sided Vertically.

Accuracy testing standard

NO.	Item	JIS grade 1	Guaranteed
1	Vise side-lock on bottom to slide way square	0.020/100mm	0.010/100mm
2	Keyways on bottom of vise bed square to clamping surface of jaw plate	0.020/100mm	0.015/100mm
3	Both jaw plate parallel	0.020/100mm	0.020/100mm
4	Max opening test block parallel to bottom of vise body	0.050/100mm	0.030/100mm
5	Top of rectangular test block clamped tightly by jaw parallel to bottom of vise body	0.030/100mm	0.020/100mm
6	Surface of vise bed parallel to bottom of vise body	0.020/100mm	0.015/100mm



Hydraulic Type

ORDER NO.	A	B	C	D	E	F	G	I	Jaw Opening (Max.)				Clamping Force	Weight Body	CODE NO.
									J	J1	J2	J3			
VMC-100HV	101	340	470	85	48	80	125	16	125	190	230	320	4000 kgf	27 kgs	4005-060
VMC-130HV	131	405	535	95	55	85	150	18	180	240	290	380	5000 kgf	40 kgs	4005-061
VMC-160HV	161	495	625	105	58	100	165	18	240	320	360	470	6500 kgf	58 kgs	4005-062
VMC-200HV	201	570	700	110	63	108	190	18	280	360	420	540	8000 kgf	87 kgs	4005-063

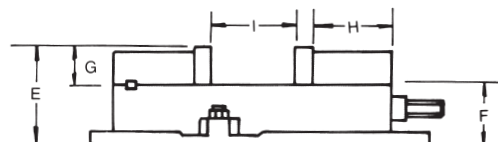
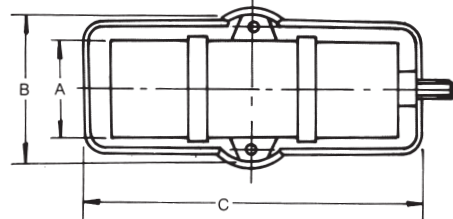
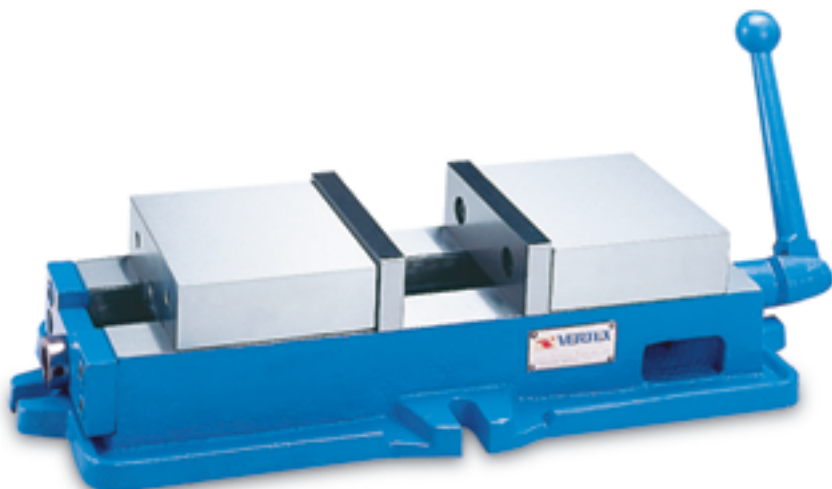
Mechanical Type

ORDER NO.	A	B	C	D	E	F	G	I	Jaw Opening (Max.)				Weight Body	CODE NO.
									J	J1	J2	J3		
VMC-100M	101	340	430	85	48	80	125	16	125	190	230	320	26 kgs	4005-064
VMC-130M	131	405	495	95	55	85	150	18	180	240	290	380	39 kgs	4005-065
VMC-160M	161	495	585	105	58	100	165	18	240	320	360	470	57 kgs	4005-066
VMC-200M	201	570	666	110	63	108	190	18	280	360	420	540	86 kgs	4005-067



Compound Ang-Fixed Vice

Suitable for irregular workpiece. Rapid and convenient centralizing.

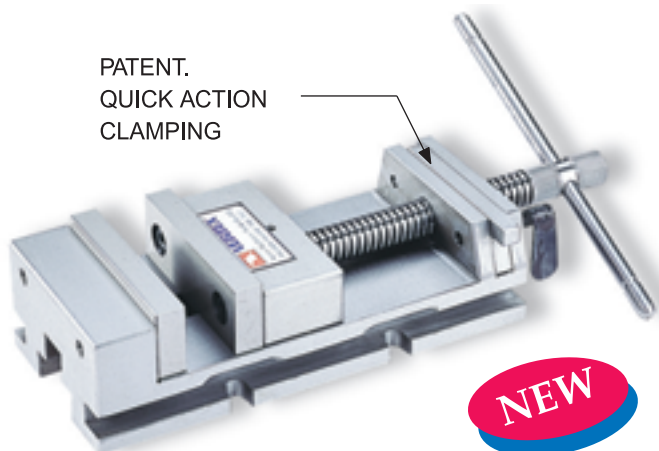


ORDER NO.	A	B	C	E	F	G	H	I	G.W. kgs	CUFT	CODE.NO.
VCV-6	150	210	430	120	70	48	120	155	52	1.8	1002-260



Quick Setting Vice

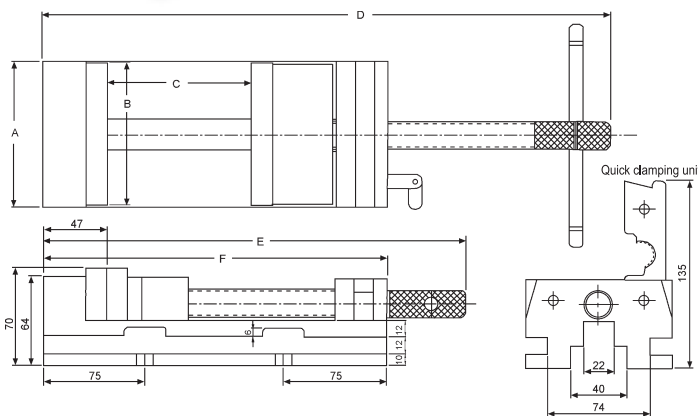
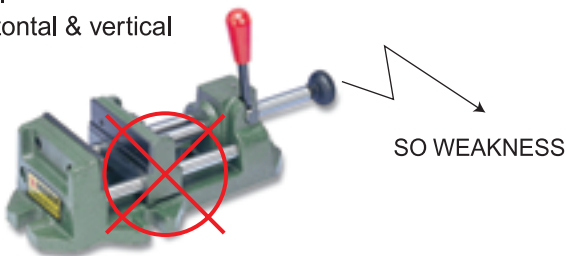
PATENT.
QUICK ACTION
CLAMPING



NEW

FEATURES

1. Special design for quick clamping. (From the acme thread shaft stationly)
2. Quick setting by moving sliding. Big clamping capability.
3. Operations very quick and easy, can be increased efficiency for works very much.
4. Good for production or prototype work.
5. Suit for milling machine, grinder machine, precision drilling machine using.
6. Accurate grounded and assembled.
7. Precision cut acme thread, it can get 900kgs high claming force.
8. Horizontal & vertical



ORDER NO.	A	B	C	D	E	F	G.W.	CODE NO.
VQS-3	82	80	80	365	285	224	7	1002-262
VQS-4	106	104	104	411	309	250	8	1002-263
VQS-5	132	130	130	465	333	274	10	1002-264



B-Type Milling Vise

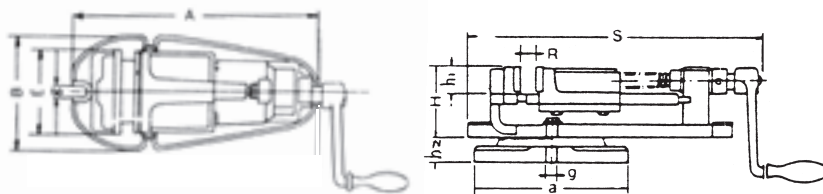


Please refer to page 11 Fig.2

Unit:mm

ORDER NO.	E	A	B	H	R	S	a	h1	h2	g1	g2	G.W. kgs	CODE NO.
VBV-4	100	270	140	79	65	305	212	33	28	12	12	13	1002-280
VBV-5	125	350	180	96	100	410	280	37	35	15	15	25	1002-281
VBV-6	150	400	210	105	114	460	245	40	40	16	16	41	1002-282

- A wider bottom to increase clamping force.
- Groove device to collect cutting oil.



Free Vise



Unit:mm

ORDER NO.	DIMENSION(WxHxL)	CLAMPING CAPACITY(HxL)	WEIGHT(2PCS)	CODE NO.
FV-350	75x67x150mm	140x350mm	4.5kgs	1002-290
FV-450	100x90x200mm	180x450mm	9kgs	1002-291
FV-550	125x120x250mm	250x550mm	21kgs	1002-292

FV TYPE IS LIGHT DUTY.

Unit:mm

ORDER NO.	CLAMPING HEIGHT	SIZE	N.W.	CODE NO.
SV-62	56	70X80X125	5.5kgs	1002-293
SV-85	82	85X92X200	11kgs	1002-294
SV-125	130	130X145X245	22kgs	1002-295



Quick Vise



ORDER NO.	Width of Jaws	Jaws Opening	G.W. kgs	CODE NO.
DV-3"	3-1/4"	2-3/4"	3.5	1002-300
DV-4"	4-5/16"	4-1/4"	6.0	1002-301

FOR DRILL MACHINE

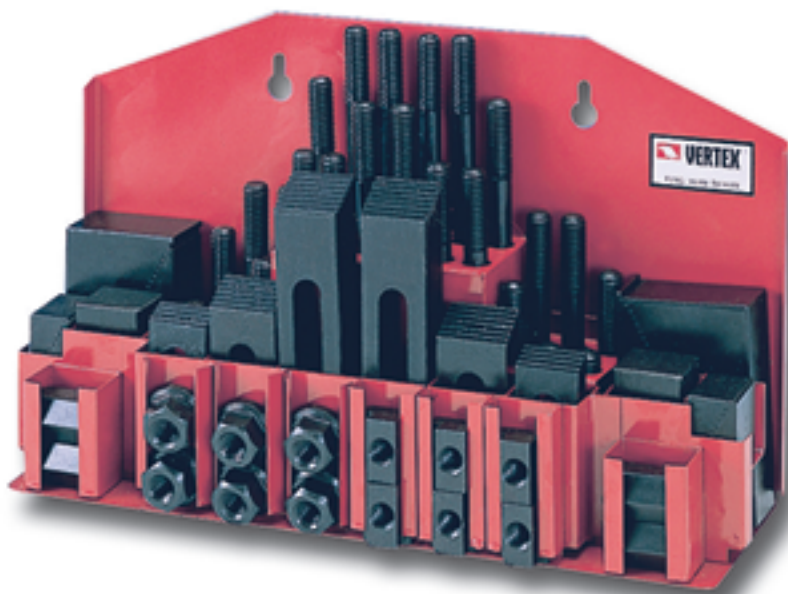
High tensile FC25 casting.

Instant setting by moving sliding

steel bar attached to movable jaw.



52-Pc Steel Clamping Kit



Order No. & Dimensions

Unit:inch

ORDER NO.	Table Slot	Stud Size	G.W. kg	Meas. CFT	CODE NO.
CK-103A	7/16"	3/8"-16w	7	(C) 0.8	1003-009
CK-103B	1/2"		7		1003-010
CK-104A	9/16"	1/2"-12w	9.5	(C) 1.0	1003-011
CK-104B	5/8"	1/2"-13w	10		1003-012
CK-105A	11/16"	5/8"-11w	13	(C) 1.5	1003-013
CK-105B	3/4"		13		1003-014
CK-206	7/8"	3/4"-10w	25	2.0	1003-015

Unit:mm

ORDER NO.	Table Slot	Stud Size	G.W. kg	Meas. CFT	CODE NO.
CK-08	10	8-1.25P	7	(C) 0.8	1003-001
CK-10	12	10-1.25P	10		1003-002
CK-12A	14	12-1.75P	9.5	(C) 1.0	1003-003
CK-12B	15.7		10		1003-004
CK-14	16	14-2.0P	11	(C) 1.5	1003-005
CK-16	18	16-2.0P	13		1003-006
CK-18	20	18-2.5P	25	(C)1.6	1003-007
CK-20	22	20-2.5P	26	(C)2.0	1003-008

Heat treated steel black oxide finish.

Block size 1" (25mm). Set in plastic rack consists of:

24 pcs Studs(4 ea, 3/4/5/6/7/8 inches or 75/100/125/150/175/200mm.)

6 pcs T-Nuts

4 pcs Coupling Nuts

6 pcs Flange Nuts

6 pcs step Clamps

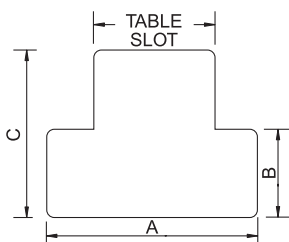
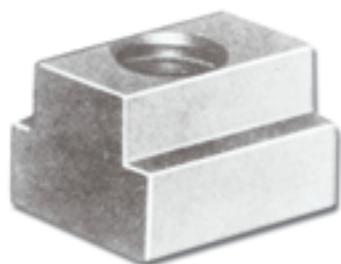
6 pcs Step Blocks

CK-18, CK20, CK206, Used Wooden Plate to keep.

The parts of every specification all can be purchased individually.

INDIVIDUALLY PARTS

T-SLOT NUT



ORDER NO.	Table Slot	Tread Size	A	B	C	WEIGHT (kg)	CODE NO.
3412M	10	M8	16	6	12	0.023	1003-020
3423M	12	M10	18	7	14	0.028	1003-021
3414M	14	M12	22	8	16	0.048	1003-022
A3424M	16	M12	25	8	16	0.06	1003-023
B3424M	16	M14	25	8	16	0.06	1003-024
3415M	18	M16	28	11	20	0.087	1003-025
3416M	20	M18	32	12	24	0.142	1003-026
3417M	22	M20	35	14	28	0.165	1003-027
3418M	28	M24	44	18	36		1003-028

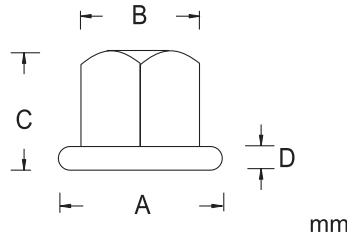
STEP CLAMP



mm

ORDER NO.	Bolt Size	Length	Width	Thickness	Weight (kg)	CODE NO.
6113	5/16 or 3/8	64	25	12	0.25	1003-030
6123	5/16 or 3/8	100	25	16	0.49	1003-031
6133	5/16 or 3/8 (M8 or M10)	150	28	19	0.99	1003-032
6214	1/2	64	28	12	0.25	1003-033
6224	1/2	100	32	19	0.67	1003-034
6234	1/2 (M12)	150	32	22	1.2	1003-035
6215	5/8	64	32	22	0.31	1003-036
6225	5/8	100	38	19	0.85	1003-037
6235	5/8 (M16)	150	38	22	1.47	1003-038
6316	3/4	100	38	19	0.75	1003-039
6326	3/4	150	38	25	1.43	1003-040
6336	3/4 (M18)	200	44	28	2.82	1003-041
6417	7/8 or 1	150	50	32		1003-042
6427	7/8 or 1	200	50	35		1003-043
6437	7/8 or 1 (M20 or M24)	250	50	38		1003-044

FLANGE NUT



ORDER NO.	Thread	A	B (M/M)	C	D	Weight (kg)	CODE NO.
4512	M8x1.25	19	13	10	2	0.013	1003-050
4513	M10x1.5	22	17	12	3	0.023	1003-051
4514	M12x1.75	28	21	16	4	0.043	1003-052
4514M	M14x2.0	28	21	16	4	0.047	1003-053
4515	M16x2.0	35	26	17	5	0.087	1003-054
4516	M18x2.5	41	32	25	6	0.10	1003-055
4517	M20x2.5	44	32	35	6	0.092	1003-056
4518	M24x3.0	50	41	32	6		1003-057

COUPLING NUT



ORDER NO.	Thread	Parallel	Length	Weight	CODE NO.
2612M	M8x1.25	13	22	0.033kg	1003-060
2613M	M10x1.5	17	25	0.035kg	1003-061
2614M	M12x1.75	21	32	0.065kg	1003-062
2614M-1	M14x2.0	21	32	0.06kg	1003-063
2615M	M16x2.0	26	41	0.128kg	1003-064
2616M	M18x2.0	32	48	0.228kg	1003-065
2617M	M20x2.5	32	48	0.208kg	1003-066
2618M	M24x3.0	41	64		1003-067

Clamping Studs

Heat Treated Steel

Studs

Black Oxide Finished



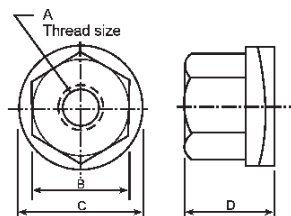
Size	Thread													
	M8x1.25P		M10x1.5P		M12x1.75P		M14x2.0P		M16x2.0P		M18x2.5P		M20x2.5P	
Length mm	ORDER NO. / CODE NO.													
75	1323M 0.02kg	1003-071	1333M 0.01kg	1003-081	1343M 0.01kg	1003-091	1343MA 0.01kg	1003-101	1353M 0.02kg	1003-111	1363M 0.03kg	1003-120	1373M 0.03kg	1003-140
100	1324M 0.03kg	1003-072	1334M 0.01kg	1003-082	1344M 0.02kg	1003-092	1344MA 0.02kg	1003-102	1354M 0.03kg	1003-112	1364M 0.04kg	1003-121	1374M 0.05kg	1003-141
125	1325M 0.03kg	1003-073	1335M 0.01kg	1003-083	1345M 0.02kg	1003-093	1345MA 0.03kg	1003-103	1355M 0.04kg	1003-113	1365M 0.05kg	1003-122	1375M 0.06kg	1003-142
150	1326M 0.04kg	1003-074	1336M 0.01kg	1003-084	1346M 0.02kg	1003-094	1346MA 0.03kg	1003-104	1356M 0.04kg	1003-114	1366M 0.06kg	1003-123	1376M 0.07kg	1003-143
175	1327M 0.05kg	1003-075	1337M 0.02kg	1003-085	1347M 0.03kg	1003-095	1347MA 0.04kg	1003-105	1357M 0.05kg	1003-115	1367M 0.07kg	1003-124	1377M 0.08kg	1003-144
200	1328M 0.06kg	1003-076	1338M 0.02kg	1003-086	1348M 0.03kg	1003-096	1348MA 0.05kg	1003-106	1358M 0.06kg	1003-116	1368M 0.08kg	1003-125	1378M 0.10kg	1003-145
250									13510M 0.07kg	1003-117	13610M	1003-126	13710M 0.12kg	1003-146
300									13512M 0.09kg	1003-118	13612M	1003-127	13712M 0.15kg	1003-147



Swivel Type Flange Nut With Disc Spring



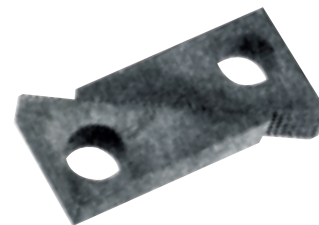
RESISTANT LOOSEN



ORDER NO.	THREAD	A	B	C	D	WEIGHT	CODE NO.
7512	M8x1.25	19	13M	19	14	0.03kg	1003-160
7513	M10x1.5	22	17M	22	17	0.03kg	1003-161
7514	M12x1.75	28	21M	28	22	0.03kg	1003-162
7514M	M14x2.0	28	21M	35	43	0.03kg	1003-163
7515	M16x2.0	35	28M	41	32	0.03kg	1003-164
7516	M18x2.5	41	32M	44	36	0.03kg	1003-165
7517	M20x2.5	44	32M	150	36	0.2kg	1003-166
7518	M24x3.0	50	41M	36	36	0.3kg	1003-167



Step Block

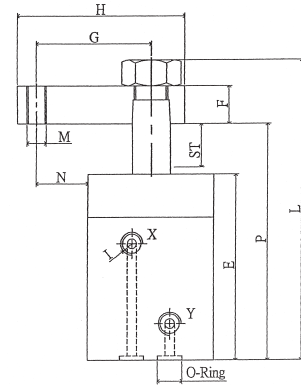
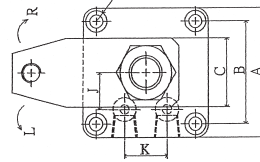


mm

STANDARD STEEL BLOCK(25 WIDE A)/(31 WIDE B)				
ORDER NO.	CAPACITY OF FULL BLOCK	HEIGHT OF 13 BLOCK	WEIGHT	CODE NO.
5114	38 to 44	38	0.14kg	1003-170
5124	44 to 63	44	0.28kg	1003-171
5134	75 to 150	75	1.245kg	1003-172
HEAVY DUTY STEEL BLOCK 38mm WIDE				
5215	63 to 94	63	0.53kg	1003-173
5225	75 to 200	75	1.72kg	1003-174
5235	138 to 230	138	3.25kg	1003-175



Swing Clamp Hydraulic Cylinder



R IS THE CLAMPING PLATE IS TURN RIGHT
L IS THE CLAMPING PLATE IS TURN LEFT

Order No.	D Bore Size mm	d Piston Rod Size mm	Pressure Area cm ² 35Kg/cm ²		Working Pressure	A	B	C	Q	Screw Size	E	F	G
VSH-25R	∅25	∅16	2.89	75	5-50Kg/cm ²	53	42	28	M5	M5*85L	77	16	48
VSH-25L	∅25	∅16	2.89	75		53	42	28	M5	M5*85L	77	16	48
VSH-32R	∅32	∅18	5.49	144		55	42	28	M6	M6*85L	77	18	53
VSH-32L	∅32	∅18	5.49	144		55	42	28	M6	M6*85L	77	18	53
VSH-40R	∅40	∅22	8.76	230		66	53	32	M6	M6*100L	89	20	59
VSH-40L	∅40	∅22	8.76	230		66	53	32	M6	M6*100L	94	20	59
VSH-50R	∅50	∅28	13.47	354		75	58	38	M8	M8*100L	89	22	64
VSH-50L	∅50	∅28	13.47	354		75	58	38	M8	M8*100L	94	22	64
VSH-63R	∅63	∅35	21.55	565		88	67	48	M10	M10*120L	109	23	72
VSH-63L	∅63	∅35	21.55	565		88	67	48	M10	M10*120L	109	23	72

Order No.	H	I	J	K	(L)	M	N	O-Ring	P	Swing Stroke (mm)	Clamping Stroke (mm)	CODE NO.
VSH-25R	70	1/8PT	15	18	124	M8*1.25	21.5	P7	98	8	10	1003-501
VSH-25L	70	1/8PT	15	18	124	M8*1.25	21.5	P7	98	8	10	1003-502
VSH-32R	75	1/8PT	18	20	127	M8*1.25	25.5	P7	98	8	10	1003-503
VSH-32L	75	1/8PT	18	20	127	M8*1.25	25.5	P7	98	8	10	1003-504
VSH-40R	85	1/8P	22	24	147	M10*1.5	26	P8	114	10	12	1003-505
VSH-40L	85	1/8P	22	24	147	M10*1.5	26	P8	114	10	12	1003-506
VSH-50R	95	1/4PT	27	32	155	M12*1.75	26.5	P8	120	10	12	1003-507
VSH-50L	95	1/4PT	27	32	155	M12*1.75	26.5	P8	120	10	12	1003-508
VSH-63R	110	1/4PT	33	38	176	M14*2	28	P9	139	12	14	1003-509
VSH-63L	110	1/4PT	33	38	176	M14*2	28	P9	139	12	14	1003-510

SAWING CLAMP HYDRAULIC CYLINDER

1. The clamp plate rotating angle is 90°, You can choice turn right or turn left of rotating direction.
2. The clamping arm will swing around the indicated angle when the piston is traveling down, And then keep straight on until the clamping arm clamps the work-piece tightly.
3. We suggest you to install a flow control valve for protecting cylinder in order to prevent the damage of cylinder barrel and internal components due to fast speed. please don't clamp the work-piece when the cylinder running.
4. This is an exclusive machine with MC clamp that is available for mass-producing spareparts. It is a great helper to raise the production efficiency.
5. Leverage structure designed. To operate on the equipment directly. Clamp easily, perform efficiently



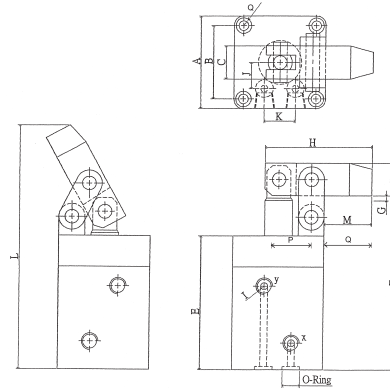
CLAMPING FORCE: FOR VSH - TYPE IS $\pi(D^2 - d^2) / 4 \times 35 \text{ kg} / \text{cm}^2 \times 0.75 = \text{__kg}$

unit:kg

Bore of cylinder(mm)	Piston rod(mm)	Pressure area(cm ²)	Operation pressure kg/cm ² to clamping force						
			10	20	30	40	50	60	70
∅25	∅18	2.37	24	47	71	95	119	142	166
∅32	∅20	4.9	49	98	147	196	245	294	343
∅40	∅22.4	8.63	86	173	259	345	432	518	604
∅50	∅28	13.47	135	269	404	539	674	808	943
∅63	∅35	21.55	216	431	647	862	1078	1293	1509



Lever Type Clamp Hydraulic Cylinder



LEFT HAND TYPE RIGHT HAND TYPE

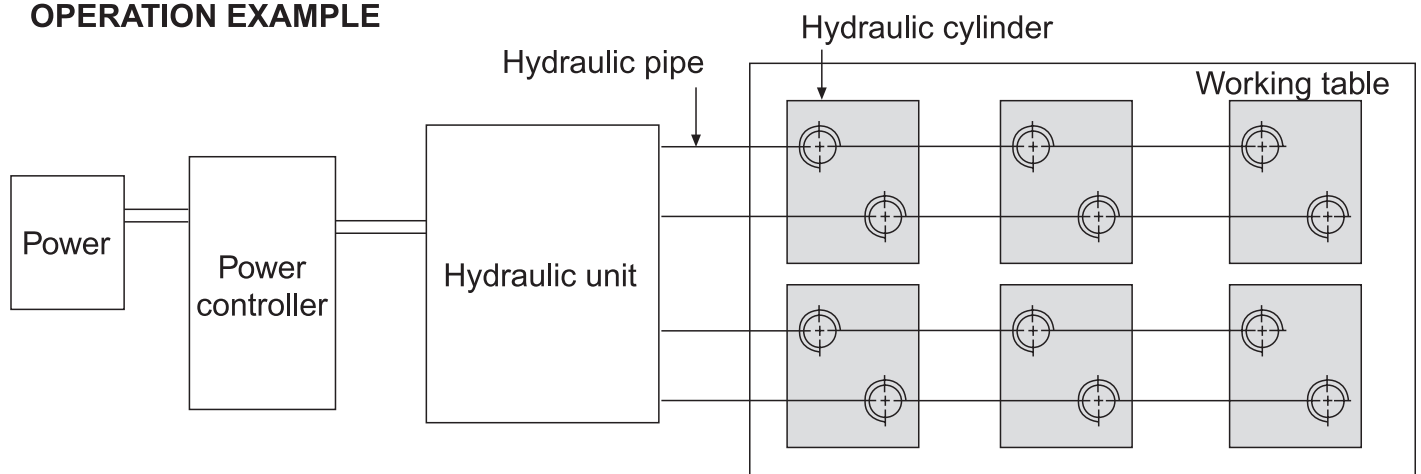
Order No.	D Bore Size mm	d Pressure Area(cm ²)	Clamping For CE 35Kg/cm ²	Working Pressure	A	B	C	Q	Screw Size
VLH-25R	ø25	4.9	80kg	5-50Kg/cm ²	53	42	19	M5	M5*85L
VLH-25L	ø25	4.9	80kg		53	42	19	M5	M5*85L
VLH-32R	ø32	8.04	130kg		55	42	19	M6	M6*85L
VLH-32L	ø32	8.04	130kg		55	42	19	M6	M6*85L
VLH-40R	ø40	12.57	220kg		66	53	22.2	M6	M6*100L
VLH-40L	ø40	12.57	220kg		66	53	22.2	M6	M6*100L
VLH-50R	ø50	19.64	340kg		75	58	25.4	M8	M8*100L
VLH-50L	ø50	19.64	340kg		75	58	25.4	M8	M8*100L

Order No.	E	F	G Stroke	H	I	J	K	(L)	M	O-Ring	P	Q	CODE NO.
VLH-25R	77	100.5	3	62	1/8PT	15	18	141	27.5	P7	19	35	1003-520
VLH-25L	77	100.5	3	62	1/8PT	15	18	141	27.5	P7	19	35	1003-521
VLH-32R	77	100.5	3	65	1/8PT	18	20	143	29.5	P7	20	37	1003-522
VLH-32L	77	100.5	3	65	1/8PT	18	20	143	29.5	P7	20	37	1003-523
VLH-40R	89	119	3	75	1/8PT	22	24	168	32	P8	24	41	1003-524
VLH-40L	89	119	3	75	1/8PT	22	24	168	32	P8	24	41	1003-525
VLH-50R	94	129.3	4	88	1/4PT	27	32	187	38	P8	28	48	1003-526
VLH-50L	94	129.3	4	88	1/4PT	27	32	187	38	P8	28	48	1003-527

LEVER TYPE CLAMP HYDRAULIC CYLINDER

1. Max. pressure: 70kg/cm²
2. The clamp structure of this model is based on the lever principle; it will be tightened as piston putting out.
3. Caution: Please make sure the clamping plate is then operate the machine. Please don't put the hand on the work-piece, when operate the hydraulic unit.
4. The clamping force: FOR VLH - TYPE IS $\pi D^2 / 4 \times 35 \text{ kg} / \text{cm}^2 \times 0.45 = \text{__kg}$
5. Leverage structure design. To operate on the equipment directly. Clamp easily, perform efficiently.
6. Please don't exceed 1.5 times of the original length. If it is necessary to increase the length of the clamping arm.

OPERATION EXAMPLE



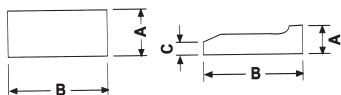


Ground Parallels

To provide more convenient processing for milling vise.



VP-100



1. Hardness: HRC 50°-55°
2. Precision: $W \times H \pm 0.01L \pm 0.5$
3. Accuracy: 0.01mm
4. Process: Four-side grinding
5. 1 set includes 18 pcs,
6. Packed by plastic case, G.W.: 11 kgs, Meas: 0.3 CFT.

ORDER NO.	BODY SIZE AxBxLxPcs	CLAMP SIZE AxBxCxLxPcs	CODE NO.
VP-100	5x16x100x2 6x18x100x2 8x24x100x2 10x30x100x2 12x36x150x2 14x48x150x2 18x60x150x2 22x62x150x2	15x31x2.5x200x2	1004-001

Unit:mm

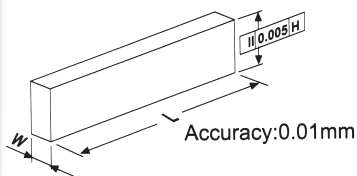


Ground Parallels



Ground Parallels

MADE OF HIGH GRADE ALLOY STEEL HARDENED AND GROUND.



VP-128A 10mm WIDTH



W x H x L x PCS
10x14x150x2
10x16x150x2
10x18x150x2
10x20x150x2
10x22x150x2
10x24x150x2
10x26x150x2
10x28x150x2
10x30x150x2
10x32x150x2
10x35x150x2
10x40x150x2
10x45x150x2
10x50x150x2

Unit:mm

ORDER NO.VP-118A 8.5mm WIDTH 6kgs
CODE NO. 1004-010

W x H x L x PCS	
8.5x14x150x2	8.5x32x150x2
8.5x16x150x2	8.5x36x150x2
8.5x20x150x2	8.5x40x150x2
8.5x24x150x2	8.5x44x150x2
8.5x30x150x2	

Unit:mm

ORDER NO. VP-128A 28PCS/SET 11kgs
CODE NO. 1004-020



Precision Parallels

To provide more convenient processing for milling vise



ACCURACY:0.01mm
WIDTH 8.0mm

13kgs

ORDER NO. VP-136 36PCS/SET CODE NO. 1004-030

WxHxLxPCS	
8 x 16 x 150 x 2	8 x 34 x 150 x 2
8 x 18 x 150 x 2	8 x 36 x 150 x 2
8 x 20 x 150 x 2	8 x 38 x 150 x 2
8 x 22 x 150 x 2	8 x 40 x 150 x 2
8 x 24 x 150 x 2	8 x 42 x 150 x 2
8 x 26 x 150 x 2	8 x 44 x 150 x 2
8 x 28 x 150 x 2	8 x 46 x 150 x 2
8 x 30 x 150 x 2	8 x 48 x 150 x 2
8 x 32 x 150 x 2	8 x 50 x 150 x 2



VP-018 Thin Type Parallels Set

3Wx150Lx20^{PCS}/SET



ORDER NO. VP-018, CODE NO. 1004-040

WxHxPCS	WxHxL PCS
3x13x150x2	3x28x150x2
3x16x150x2	3x31x150x2
3x19x150x2	3x35x150x2
3x22x150x2	3x38x150x2
3x25x150x2	3x41x150x2

G.W 3kgs. PACKING:175x65x200 mm

ACCURACY: 0.01mm

THICKNESS 1/8" \approx 3mm



VP-163 Precision Parallels

5Wx150Lx8^{PCS}/SET



ORDER NO. VP-163, CODE NO. 1004-050

WxHxPCS
5x25x150x2
5x31x150x2
5x38x150x2
5x44x150x2

G.W 1.8kgs. PACKING:100x65x175 mm

ACCURACY: 0.01mm

THICKNESS 3/16" \approx 5mm



VP-064 Precision Parallels

6Wx150Lx18^{PCS}/SET



ORDER NO. VP-064, CODE NO. 1004-060

WxHxPCS	WxHxL PCS
6x19x150x2	6x35x150x2
6x22x150x2	6x38x150x2
6x25x150x2	6x41x150x2
6x28x150x2	6x44x150x2
6x31x150x2	

G.W 4.5kgs. PACKING:210x178x68 mm

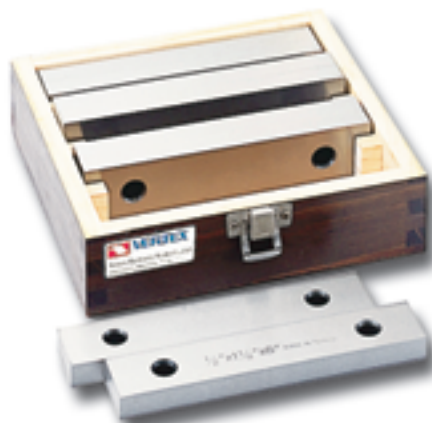
ACCURACY: 0.01mm

THICKNESS 1/4" \approx 6mm



VP-050 Precision Parallels

13Wx150Lx8^{PCS}/SET



ORDER NO. VP-050, CODE NO. 1004-070

WxHxPCS
13x25x150x2
13x31x150x2
13x38x150x2
13x44x150x2

G.W 8.3kgs. PACKING:180x70x310mm

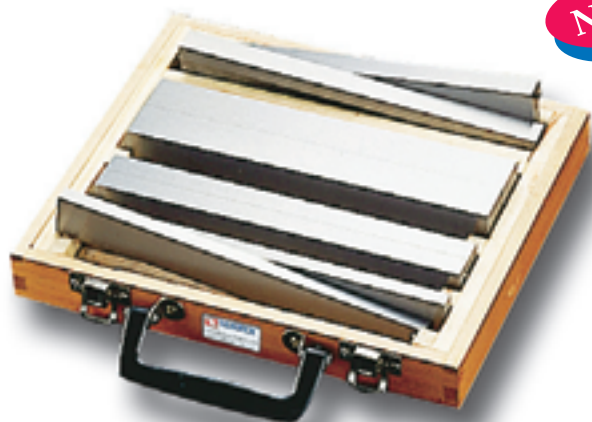
ACCURACY: 0.01mm

THICKNESS 1/2" \approx 13mm



VP-033 Precision Parallels

NEW



ORDER NO. VP-033 200L x8 PCS/SET CODE NO. 1004-080

ORDER NO.	WxHxLxPCS
VP-033 (200L x 8) PCS/SET	8x24x200x2
	12x36x200x2
	22x40x200x2
	31x15x200x2x2.5 For Clamping

G.W. 6kgs PACKING:180x65x230mm
LONGER TYPE, SUIT FOR BIGGER VISE.



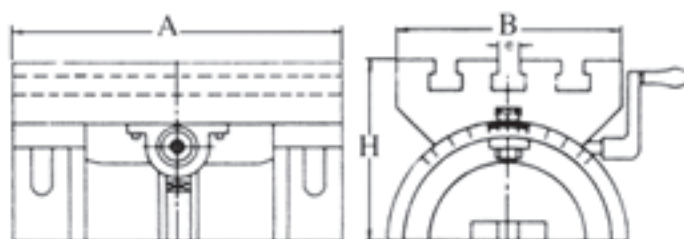
Adjustable Angle Plate

Unit:mm



ORDER NO.	TABLE L X W			T-SLOT	APPROX WEIGHT	CODE NO.
	A	B	H	e		
VP-180	180	130	91	10	7.5kg	1004-089
VP-250	250	178	133	12	22.5kg	1004-090
VP-380	380	260	185	16	69kg	1004-091
VP-600	600	300	205	16	100kg	1004-092

- 1.For angle setting on various machine tools.
- 2.Adjustable 45° each side.

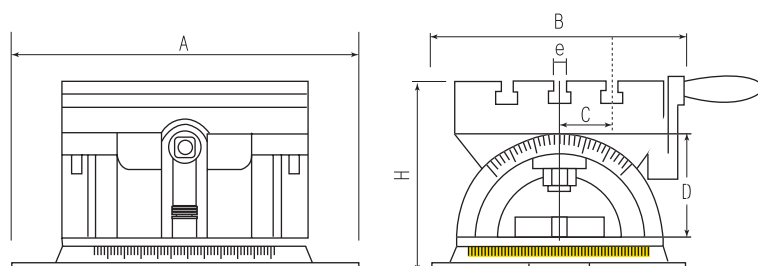


Angle Plate With Swivel Base

Unit:mm



ORDER NO.	TABLE L X W			T-SLOT			WEIGHT (kg)	CODE NO.
	A	B	H	e	C	D		
VP-250S	250	220	177	10	50	90	40	1004-100
VP-380S	350	305	233	12	68	127	80	1004-101





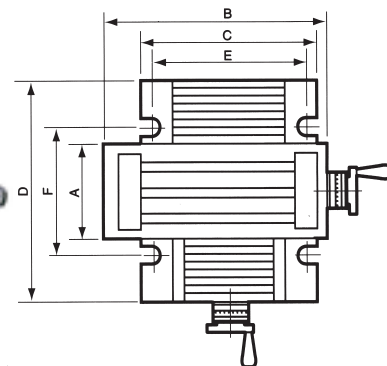
Precision Cross Table



VCT-407



VCT-514



- Material:over FC-30
- Precision:0.02/100mm
- Feature:The sliding surfaces are treated by heat-treatment & precision ground

Specifications

Unit:mm

ORDER NO.	A	B	C	D	E	F	Stroke	T Slot	Total height	Dial graduation	PACKING LxWxH m/m	WEIGHT kgs	CODE NO.
VCT-407	100	185	130	100	115	50	50x80	3/8"	100	2mm/0.01	290x240x140	16	1007-001
VCT-514	150	350	250	300	220	205	150x175	3/8"	130	4mm/0.02	510x450x240	38	1007-002
VCT-820	200	500	300	400	250	290	200x250	3/8"	160	4mm/0.02	670x560x280	78	1007-003
VCT-1024	250	600	400	500	340	430	250x300	1/2"	210	4mm/0.02	790x680x310	141	1007-004



Precision Cross Table



VCT-830

A heavy, rugged slide in all kinds of positioning, milling, drilling micro-scope viewing and staging, adjustable bases for heavy loads, small jig boring, precision cut-off.

(m/m)

ORDER NO.	VCT-830
TABLE:	210X730MM
HEIGHT:	150MM
TRAVEL:	350X165MM
BASE:	360X285MM
DIAL GRADUATED	0.02MM
NET WEIGHT	85KGS
CODE NO.	1007-010



Cross Table



VCT-512

ORDER NO. VCT-512 CODE NO. 1007-020

Table:300x140mm
 Height:115mm
 Travel:200mm longitudinal.
 125mm transverse.
 Base:225mmx200mm oval with U slots for up to 16 bolts on 190 to 210 bolts circle.
 Dial Graduated:0.03mm
 Net weight:16.6kgs.
 Packing Volume of each unit:430X265X155mm
 LIGHT DUTY ONLY



Right Angle Head



VRA-TYPE

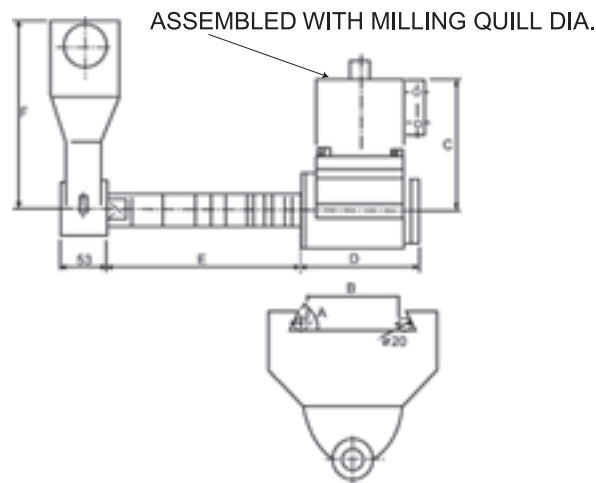
1. Used on Vertical Milling Machine to make horizontal work.
2. Rigidity constructed suitable for heavy-duty cutting.
3. The clamping bushing to suit milling machine

Please notify the quill dia. when ordering

ORDER NO.	SUITABLE MILLING HEAD QUILL DIAMETER	WEIGHT	CODE NO.
VRA-R8	85.725mm~86mm	12kgs	1008-001
VRA-NT 30	85.725mm~86mm	13kgs	1008-002
VRA-NT 40	85.725,100,105,110,115mm	20kgs	1008-003



Horizontal Milling Attachment



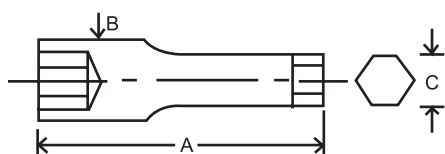
•Horizontal Milling Arbor Support

Unit:mm

SPEC. TYPE	SUITABLE M/C RAM DOVETAIL WIDTH	WEIGHT
A 50°	B 140mm~170mm	26kgs
A 55°	B 140mm~170mm	27kgs
A 60°	B 140mm~170mm	29kgs

ORDER NO.	C	D	E	F	CODE NO.
VHA-R-8	175	138	255	233	1008-010
VHA-NT-30	175	160	270	233	1008-011
VHA-NT-40	183	190	270	233	1008-012

1. Special dovetail degree, also can supply....please notify.
2. VHA-TYPE including right angle head, long horizontal arbor and breaket. VHA-R-8-27m/m VHA-NT-30/NT-40-27m/m for The mm size, for inch size are same 25.4^{mm}(1")
3. The quill diameter is same as VRA-Type



ORDER NO.	A	øB	C
VHA-R-8	145	25	19
VHA-NT-30	145	25	19
VHA-NT-40	140	28	21



Power Table Feed - Super Power Type



For Longitudinal X Axis

For Cross Y Axis

For Vertical Z Axis

VPF-250X The VERTEX vertical milling machines-model: VTM-2S/2V/3V/4V/5V and all milling machine without gearbox table feed device. All type milling/drilling machines high torque. Easy installation. Automatic shutoff. Superior thermal characteristic .Smooth operations. Safety option. Trouble-free performance. super power.
VPF-250Y
VPF-250Z
 The max. torque is 650 in/1b
 1. New super power design and construction materials.
 2. Top quality. Long life span designed.



VPF-235

Features

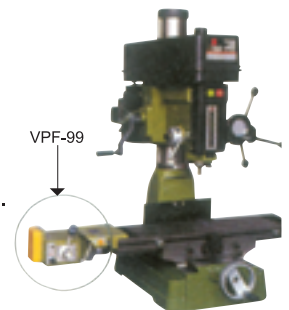
1. The VERTEX power table feed for 2V,3V,5V milling machine.
2. Easy to install, no modification needed.
3. Highest quality design and construction materials.
4. Circuit panel is designed with easily replaceable insert type connectors.
5. Assy-gear(nylon) clutch has built in torque release to prevent damage to shaft and metal gear if too much resistance is met.



VPF-99

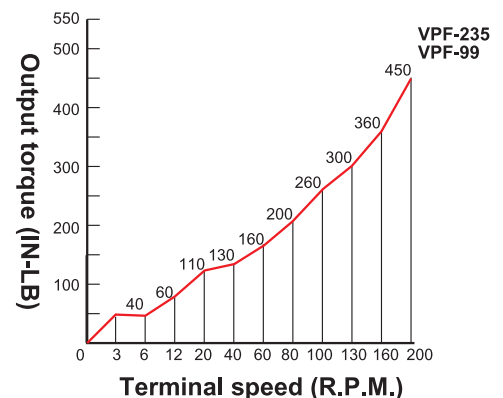
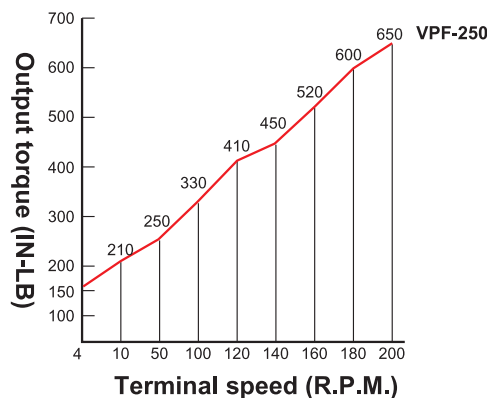
Features

1. Application:the VERTEX power table feed for Drill/Milling machine.
2. Easy to install, no modification needed.
3. Highest quality design and construction.
4. Circuit panel is designed for easy replacement with insert type connectors.
5. Assy-gear clutch has limit for twisting:When power feed is working and accepting tremendous obstacle, the assy-gear clutch will automatically become neutral turning in order to reduce damage.



OPTIONAL Transformer 110V 220V

ORDER NO. VPF-TF
 CODE NO. 1009-006
 TR1:Output TR2:2 Output
 Output: 110V 50/60Hz,
 power supply: 50/60Hz, 1-phase
 220, 240, 380, 415, 440V
 THIS TRANSFORMER IS
 FOR VPF-TYPE USE ONLY.



ORDER NO.	VOLTAGE	Speed Range	Rapid Speed	Max. Torque	LxWxH	G.W.	CODE NO.
VPF-250 x	110V	4-160rpm	200rpm	650 in/lb	290x200x320mm	6.5kgs	1009-001
VPF-250 y							1009-002
VPF-250 z							1009-003
VPF-235 x	110V	0-140rpm	200rpm	440 in/lb	290x200x320mm	6.5kgs	1009-004
VPF-99 x	110V	0-165rpm	240rpm	450 in/lb	290x200x315mm	6.8kgs	1009-005



Air Power Drawbar



- It will increase your productivity with more profits as cutter replacement needs only 3 sec and the speed of replacement is more than 10 times to compare with traditional cutter replacement.

Air power drawbar

PD-150 PD-200

1. It can be installed in any kind of machine, of which the main spindles are R-8, NT #30, #40 or #50.
2. It is convenient for the machinist who wants increased production and performance from his machine.
3. It is suitable for NC and general milling machines.
4. This device is easily installed, needs only 5 seconds to change the cutting tool.
5. Main power is air compression.
6. This machine is designed with a safety device controlled with a solenoid valve. The power drawbar cannot be operated while the machine is running.

Standard equipment

1. Power motor
2. Control box
3. Air filter and lubrication
4. Drawbar
5. Mounting hardware

ORDER NO.	SPEED	TORQUE	AIR PRESSURE	VOLTAGE FOR MAGNETIC VALVE	G.W. kgs	PACKING L x W x H	CODE NO.	
PD-150 FOR R-8	3000 R.P.M	150 ft-lb	90 psi 6.3 kg / cm ²	AC 110V OR 220V DC 24V	9.8	650x300x200	1010-001	
							NT-30	1010-002
							NT-40	1010-003
PD-200 FOR NT-50	3000 R.P.M	200 ft-lb	90 psi 6.3 kg / cm ²	AC 110V OR 220V DC 24V	11	650x300x200	1010-004	

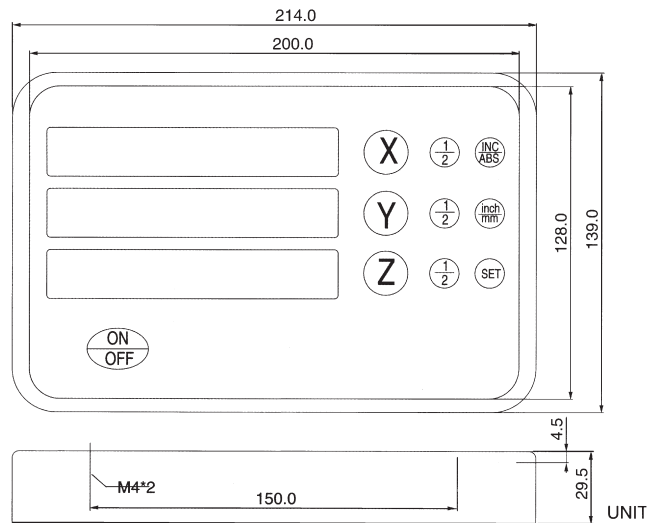


Digital Readout & Linear Scale



- Using 5 sets of bearings assures excellent repeatability positioning, good sliding and durability
- High accuracy optical glass scale
- Excellent capability in interference resistance (2000V)
- Easy installation and maintenance.
- Special process of aluminum alloy for water/oil proof and anti-dust.

Standard type Digital Readout



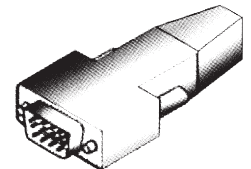
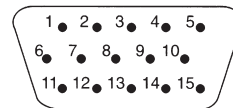
ORDER NO.	AXIS OF NUMBER	WEIGHT (kg)	CODE NO.
DR 3000-2	2	2.1	1011-001
DR 3000-3	3	2.1	1011-002

STANDARD 15 PIN D-TYPE ASSIGNMENTS

- NC:NO CONNECTION
- 7.8:Aux. Power Pins
- 13.14:Reserved Pins
- FG:Frame Ground

DR 3000 Function

- Zero setting.
- 1/2 calculation, locating workpiece center.
- mm/inch conversion.
- INC/ABS conversion
- Resolution selection:
Scale: 0.0001, 0.0002, 0.0005, 0.001, 0.002, 0.005, 0.01, 0.02, 0.05, 0.1, 0.2, 0.5, 1, 5, 10 mm.
- Encoder: 1~0.0001
- Diameter/Radius selection.
- DIR:Setting the coordinate direction.
- Error compensation: Linear compensation and non linear compensation.
- Instant power failure memory.
- Self-diagnostic function for calculation error.
- RS232 output.
- Power consumption:DC 8V-30V , 0.8A



1	2	3	4	5	6	7	8
+5V	OV	A	B	RI	FG	+5V	OV
9	10	1	12	13	14	15	
NC	NC	IG	OV	NC	NC	NC	



Linear Scale

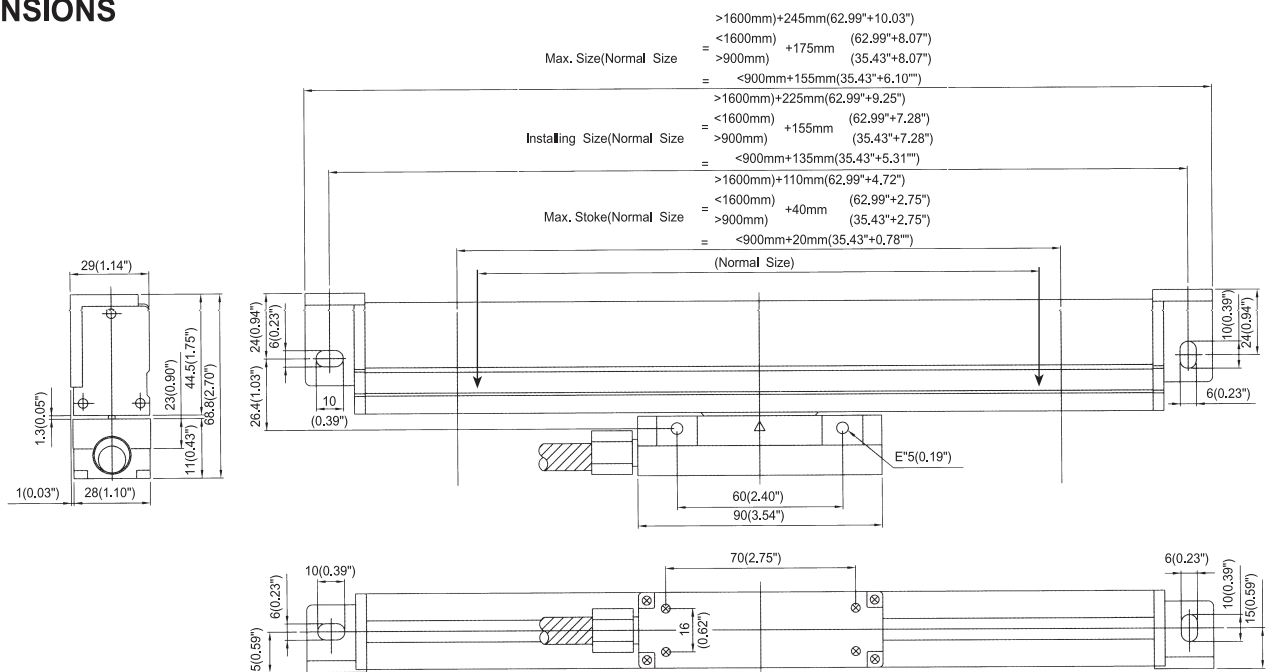


- Resolution: 0.005 mm;
- Measuring Length (ML): 50mm~3000mm
- Output signal: 5V, TTL; RS422 (optional)
- Accuracy: $\pm (5+5L/1000) \mu M$
- Max. Response Speed: 72M/min.

LENGTH	50mm	100mm	150mm	200mm	250mm	300mm	350mm
ORDER NO.	LS0050-5A3	LS0100-5A3	LS0150-5A3	LS0200-5A3	LS0250-5A3	LS0300-5A3	LS0350-5A3
WEIGHT(kg)	1.2	1.38	1.52	1.54	1.60	1.73	1.89
CODE NO.	1011-010	1011-011	1011-012	1011-013	1011-014	1011-015	1011-016
LENGTH	400mm	450mm	500mm	600mm	700mm	800mm	900mm
ORDER NO.	LS0400-5A3	LS0450-5A3	LS0500-5A3	LS0600-5A3	LS0700-5A3	LS0800-5A3	LS0900-5A3
WEIGHT(kg)	1.95	2.06	2.14	2.34	2.62	2.72	3.03
CODE NO.	1011-020	1011-021	1011-022	1011-023	1011-024	1011-025	1011-026
LENGTH	1000mm	1100mm	1200mm	1300mm	1400mm	1500mm	1600mm
ORDER NO.	LS1000-5A3	LS1100-5A3	LS1200-5A5	LS1300-5A5	LS1400-5A5	LS1500-5A5	LS1600-5A5
WEIGHT(kg)	3.26	3.46	3.55	3.83	4.05	4.32	4.60
CODE NO.	1011-030	1011-031	1011-032	1011-033	1011-034	1011-035	1011-036

Standard signal cable length = 3.5 meter, ML < 1200mm; 5 meter, ML * 1200mm

DIMENSIONS



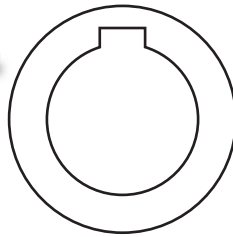
(MAX. TRAVEL) = ML + 20mm ML≤900mm, ML+ 40mm 1000mm≤ML≤1600mm, ML + 110mm M≥1800mm



Slotting Head Unit



ORDER NO.	CODE NO.
VSH-R8	1012-001
VSH-NT30	1012-002
VSH-NT40	1012-003



This device's maximum up-and-down travel is 50mm. It can be mounted on general milling machine as Slotting Head.

1. IT IS QUICK AND HANDY FOR CHANGING THE TOOLS
2. PROCESS FUNCTION:RIGHT ANGLE.
3. IT'S SUITABLE FOR ALL THE MACHINE TOOLS (EXAMPLE: VERTICAL TURRET MILLING MACHINE, BORING MACHINE, MACHINING CENTER,ETC.)

ORDER NO.	VSH-
SPINDLE TAPER	R8 , NT30 , NT40
TRAVEL	50mm
CUTTER	4mm, 5mm
WEIGHT	9KGS
L x B x H	240x250x150mm



Precision Slotting Head

ORDER NO. VSH-125 CODE NO. 1012-010

Features

- 1.Special design worm and worm gear with linkage transmission mechanism, well construction and highly power output.
- 2.The ram-sliding surface are hardened and precision ground
- 3.Built in lubricating system for smoothly running and prolong the life of head
- 4.Available mounting on any type milling m/c back side of the ram.

Specification

Stroke:125mm(5")

No. of stroke speed change:5 steps

Stroke speed (stroke/min):30,47,69,98,140 spm(50HZ)

Stroke speed (stroke/min):35,54,79,112,160 spm(60HZ)

Driving Motor:3/4HP-6P

G.WEIGHT: 150kgs

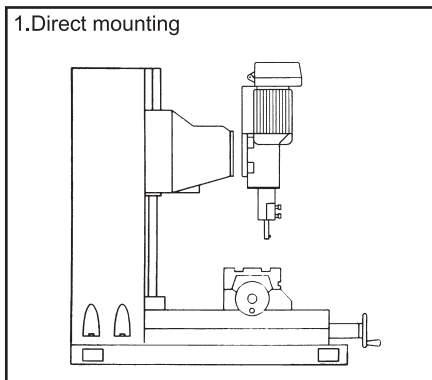
Optional Accessories

1. Flange A
2. Flange B
3. Slotting bar & cutter
4, 5, 6, 7, 8, 10mm

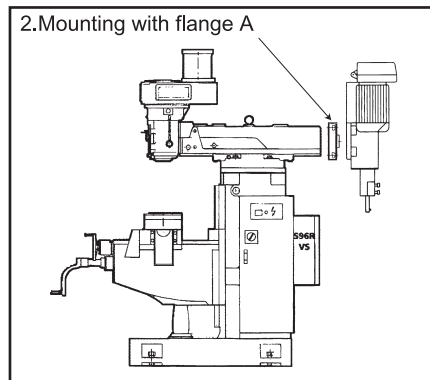
ORDER NO.	CUTTER & DESCRIPTION	WEIGHT (kg)	CODE NO.
VSH-4C	Slotting bar 4mm	0.07	1012-011
VSH-5C	Slotting bar 5mm	0.08	1012-012
VSH-6C	Slotting bar 6mm	0.09	1012-013
VSH-7C	Slotting bar 7mm	0.1	1012-014
VSH-8C	Slotting bar 8mm	0.1	1012-015
VSH-10C	Slotting bar 10mm	0.1	1012-016
VSH-FGA	FLANGE A	17	1012-017
VSH-FGB	FLANGE B	22	1012-018



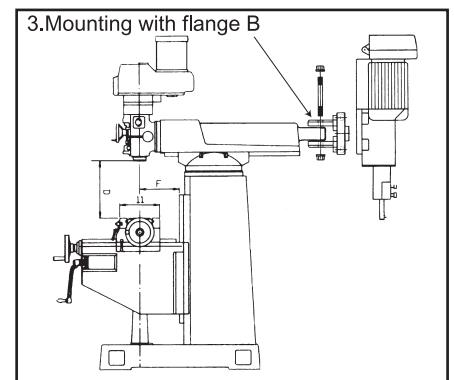
1.Direct mounting



2.Mounting with flange A

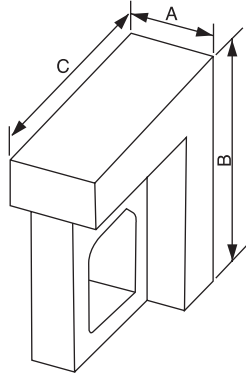


3.Mounting with flange B





Precision Right Angle Plate



- Made of finest quality castings, stress relieved.
- All outside surfaces closely finished for square and parallel references:

Precision ground: Square within 0.01mm per 100mm

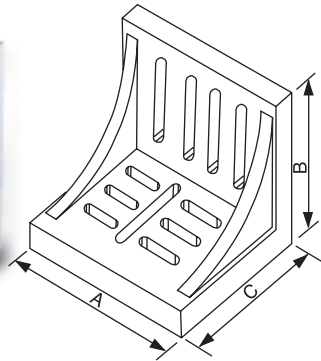
Parallel within 0.01mm per 100mm

Unit:mm

ORDER NO.	Approx Dimensions			WEIGHT	CODE NO.
	A	B	C		
VRH-4	102	126	150	7 kgs	1013-001
VRH-5	126	202	300	19 kgs	1013-002
VRH-6	150	150	202	15 kgs	1013-003
VRH-8	202	250	300	32.5 kgs	1013-004



Right Angle Plate



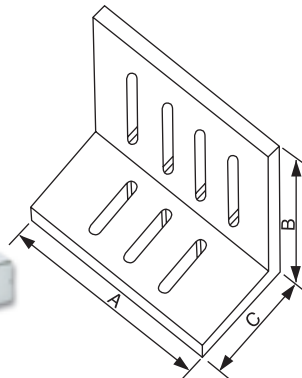
- Made of high tensile cast iron
- Webbed style accurately grounded, square and parallel on outside faces and ends within 0.01mm per 100mm

Unit:mm

ORDER NO.	Approx Dimensions			WEIGHT	CODE NO.
	A	B	C		
VR-6	150	126	115	3.5 kgs	1013-010
VR-8	202	150	126	7 kgs	1013-011
VR-10	250	202	126	12 kgs	1013-012
VR-12	300	228	202	25 kgs	1013-013



Slotted Angle Plates



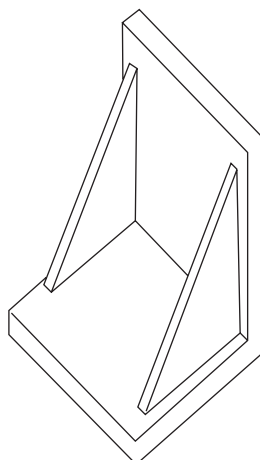
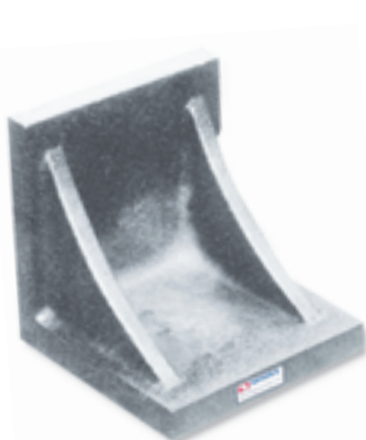
Many sizes also stocked with precision ground finish, prices on request.

- Made of high tensile cast iron properly seasoned against distortion.
- Open end style accurately machined square and parallel on all faces.

ORDER NO.	Approx Dimensions			APPROX WEIGHT	CODE NO.
	A	B	C		
VR-45	4-1/2"	3-1/2"	3"	1.6 kgs	1013-020
VR-60	6"	5"	4-1/2"	4.5 kgs	1013-021
VR-80	8"	6"	5"	7 kgs	1013-022
VR-100	10"	8"	6"	14.5kgs	1013-023
VR-120	12"	9"	8"	24 kgs	1013-024



Plain Angle Plates



Machined or precision ground

- Made from high tensile cast iron - normalized and stress relieved.
- Machined: Flat and square within .002" per 6" for general work.
- Precision ground: Flat and square within .0005" per 6" for layout and inspection or precision machining.

ORDER NO.	Size in inches	APPROX WEIGHT	CODE NO.
VR-22	2 x 2 x 2	0.5 kgs	1013-030
VR-33	3 x 3 x 3	1.1 kgs	1013-031
VR-44	4 x 4 x 4	2.5 kgs	1013-032
VR-55	5 x 5 x 5	4 kgs	1013-033
VR-66	6 x 6 x 6	7 kgs	1013-034
VR-88	8 x 8 x 8	13 kgs	1013-035
VR-1010	10 x 10 x 10	26 kgs	1013-036
VR-1212	12 x 12 x 12	43.5kgs	1013-037



Screw Jack



ORDER NO.	ADJUSTABLE CAPACITY	DØ	K.G.	CODE NO.
VSJ-70	65-80mm	38	0.43	1014-001
VSJ-150	110-150mm	50	1.16	1014-002
VSJ-250	140-200mm	53	2.22	1014-003
VSJ-500	280-380mm	73	4.59	1014-004



U-Clamp



PAIRS

ORDER NO.	STUD	L x W x H	K.G.	CODE NO.
VCA-404	1/2" x 4"	105x45x35mm	1.5	1015-001
VCA-405	5/8" x 5"	126x54x40mm	2.4	1015-002
VCA-406	3/4" x 6"	202x60x50mm	4.3	1015-003



Pivot Clamp



PAIRS

ORDER NO.	Table T-Slot Size	Stud X L Size	Body	Clamping height	G.W.	CODE NO.
VCB-404	16	1/2-12x5"	115x42x39	0 or 3 1/2"	1.6	1015-005
VCB-405	20	5/8-11x6"	133x50x49	0 or 4"	2.6	1015-006
VCB-406	22	3/4-10x7"	157x60x54	0 or 4 3/4"	4.5	1015-007
VCB-408	25	1-8x8"	7x27/8	1-1/2	8	1015-008

- The clamping height is adjustable
- With brass plate under the clamp arm for protecting the working material from damage
- By using spherical Flange nut, it will be assured to clamp the material tightly
- The clamping arm is forged



Hand Drift



An essential tool for machinery processing

Specially applied for :Vertical drill, radial drill, compounding miller, boring miller, and any drill drifting, etc.

- Easy and fast operation.
- Enhance the working efficiency.
- Protect toolings to be safe.
- Economical, practical & durable.

ORDER NO.	Suit For Spindle Notes	Length	Pc/Box Size	30 Pcs/ Carton Size	N.W.	CODE NO.
VHD-1	M.T.#2 #3 #4 #5	375mm	385x45x37mm	390x270x240mm	1.5 kg	1016-001



Eye Shield

VH-56

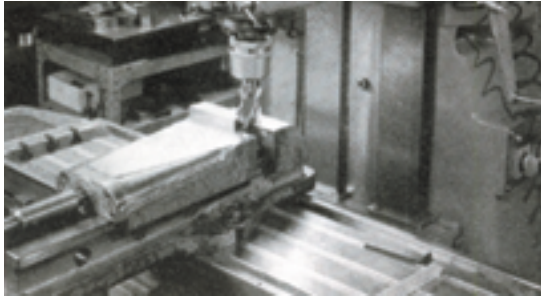


- The clamping height is adjustable
With brass plate under the clamp arm for protecting the working material from damage

ORDER NO.	GUIDER SIZE	K.G.	CODE NO.
VH-56	300x180x2	1	1017-001



Milling Table Slot Cover

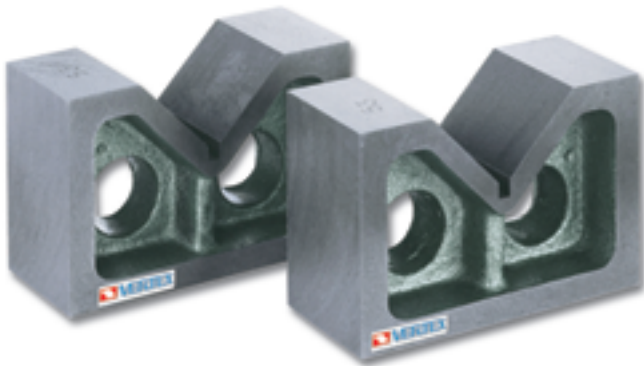


- For milling machines with 5/8" T-slot Dimensions
- Save time cleaning chips from machine
- Protects table slots
- Prevents chips from interfering with coolant flow
- Made of hand anodized aluminum, The weight is light
- Available in 3 different sets

ORDER NO.	W	L	Set	WEIGHT	CODE NO.
VST-16	16	400	6PCS	0.2kg	1018-001
VST-18	18	450	6PCS	0.2kg	1018-002
VST-20	20	1000	5PCS	0.8kg	1018-003
VST-22	22	1000	5PCS	0.8kg	1018-004
VST-24	24	1000	5PCS	0.8kg	1018-005
VST-28	28	1000	5PCS	1kg	1018-006
VST-36	36	1000	5PCS	1.1kg	1018-007



Vee Blocks



MACHINED ONLY

Material:High quality close-grained cast iron, stress-relieved.

Accuracy:Machining to 0.03mm/100mm

ORDER NO.	Length	Width/Set	Height	V-Width	V-Depth	Weight/Set	CODE NO.
V-2V	51mm	48mm	32mm	25mm	12.5mm	0.40kgs	1019-001
V-3V	76mm	62mm	53mm	34mm	17mm	1.16kgs	1019-002
V-4V	102mm	82mm	60mm	48mm	24mm	2.04kgs	1019-003
V-5V	126mm	102mm	79mm	58mm	29mm	4.02kgs	1019-004
V-6V	150mm	124mm	88mm	80mm	40mm	6.32kgs	1019-005
V-7V	178mm	152mm	115mm	92mm	46mm	10.9kgs	1019-006
V-8V	202mm	174mm	140mm	114mm	57mm	18.6kgs	1019-007



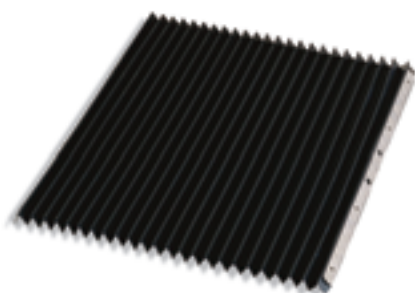
Draw Bar



ORDER NO.	DRAW BAR THREAD	LENGTH mm		WEIGHT (kg)	CODE NO.
		STEPS (S) TYPE	VARIABLE (A) SPEED		
VDR-R8-S	7/16-20NC	518	598	0.49	1020-001
VDR-R8-A				0.732	1020-002
VDR-NT302-S	1/2-12NC	555	635	0.638	1020-003
VDR-NT302-A				0.824	1020-004
VDR-NT303-S	1/2-13NC	555	635	0.638	1020-005
VDR-NT303-A				0.824	1020-006
VDR-NT30M-S	M12 X 1.75P	555	635	0.638	1020-007
VDR-NT30M-A				0.824	1020-008
VDR-NT40I-S	5/8-11NC	545	630	1.024	1020-009
VDR-NT40I-A				1.266	1020-010
VDR-NT40M-S	M16 X 2.0P	545	630	1.024	1020-011
VDR-NT40M-A				1.266	1020-012



Expandable Machine Guard Cover



F IS FOR FRONT (X)
B IS FOR BACK (Y)
(MILLING MACHINE)
B SERIES PLASTIC
IS PLANE TYPE.

ORDER NO.	W x L	SUITFUL MILLING SIZE	WEIGHT (kg)	CODE NO.
VGC-3833F	380 x 330	1.5"	0.304	1021-001
VGC-3860F	380 x 600	1.6" 1.7"	0.508	1021-002
VGC-4550F	450 x 500	1.6"	0.61	1021-003
VGC-3775B	370 x 750	1.5"	0.698	1021-004
VGC-4585B	450 x 850	1.6" 1.7"	1.002	1021-005
VGC-6085B	600 x 850	2.0"	2.104	1021-006



5C.C32.OZ25 Collet Rack



SIZE: 220x110x6 m/m
MATERIAL: PLASTIC
G.W.0.6 kgs

ORDER NO.	VMS-5
CODE NO.	1021-050



Parts Storage

COLOR: RED,BLUE, YELLOW



ORDER NO.	SIZE	PACKED	EACH WEIGHT	CODE NO.
VHB-1218	120W x 180D x 80H mm	60PCS/CASE	0.125kg	1021-100
VHB-1525	150W x 250D x 120H mm	36PCS/CASE	0.27kg	1021-101
VHB-2035	200W x 350D x 150H mm	18PCS/CASE	0.585kg	1021-102
VHB-2045	200W x 450D x 177H mm	12PCS/CASE	0.8kg	1021-103
VHB-3045	300W x 450D x 177H mm	8PCS/CASE	1.8825kg	1021-104
VHB-1015	100W x 150D x 80H mm	80PCS/CASE	0.074kg	1021-105
VHB-1220	300W x 450D x 177H mm	60PCS/CASE		1021-106
VHB-1526	150W x 260D x 128H mm	36PCS/CASE	0.201kg	1021-107



Universal Cutter Grinder



ORDER NO. U2 CODE NO. 1022-001

For grinding HSS and carbide engraving cutter as well as single lip or multiple lip cutters of various shapes such as radiused cutters or negative taper angle of cutters. The universal index head is provided at 24 positions so that any particular angle or shape can be obtained, free 3600 or 100 rotation is allowed for grinding End Mills. Twist Drill. Lathe Tools, only replace the attachment to the index head without any complex setup.

Technical Data

- Max. Collet capacity $\varnothing 18\text{mm}$
- Max. Grinding dia. $\varnothing 25\text{mm}$
- Taper angle $0^\circ _ 180^\circ$
- Relief angle $0^\circ _ 45^\circ$
- Negative angle $0^\circ _ 26^\circ$
- Grinding spindle 3600 r.p.m.
- Cup grinding wheel 100X50X20mm
- Motor 1/3Hp 220V50/60Hz, please notify volt & phase
- Net weight 45kgs

G.W.:60kgs

Machine dimensions(LXWXH)45X40X35cm

Packing dimensions(LXWXH)55X45X47cm

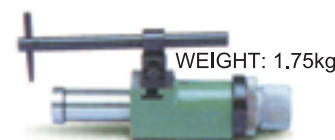
Standard Accessory

1. Wheel dresser with diamond..... 1pc
2. Wheel flange (mounted)..... 1pc
3. Grinding wheel..... 1pc (U2-G)
4. Collect $\varnothing 4, 6, 8, 10, 12\text{mm}$ 5pc
5. Aligning flinger..... 1pc
6. Drive belt(U2-B)..... 1pc (U2-B)
7. Lock pin..... 1pc
8. Tools..... 1set

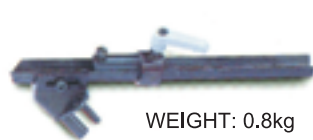
Optional Accessory

1. Twist drill grinding attachment U2-T
2. END mill grinding attachment U2-E
3. Lathe tool grinding attachment U2-L
4. Grinding wheel balancing stand
LBS-100 CODE NO. 2014-010
5. Diamond grinding wheel U2-D
6. Resinoid Diamond & CBN Wheels U2-R
7. Collect (extra 1, 2, 2.5, 3, 5, 7, 9, 18, 20, 25mm
and 1/8", 3/16", 1/4", 5/16", 3/8", 1/2", 5/8")

ORDER NO.	CODE NO.
U2-E	1022-010
U2-T	1022-011
U2-L	1022-012
U2-D	1022-013
U2-B BELT	1022-014
U2-C CABINET	1022-015
U2-G WHEEL	1022-016
U2-R	1022-017



WEIGHT: 1.75kg
CODE NO. 1022-010 U2-E
END mill grinding attachment



WEIGHT: 0.8kg
CODE NO. 1022-011 U2-T
Twist drill grinding attachment



WEIGHT: 1.1kg
CODE NO. 1022-012 U2-L
Lathe tool grinding attachment



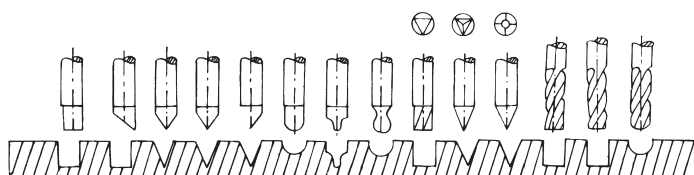
U2-R
WEIGHT: 0.6kg
1022-017
U2-D
WEIGHT: 0.3kg
1022-013
CODE NO. 1022-013
Diamond grinding wheel
CODE NO. 1022-017
Resinoid Diamond & CBN Wheels



8. Tool cabinet stand U2-C, 900 x 500 x 400
m/m G.W 40kgs
CODE NO. 1022-015



ENGRAVING AND MILLING CUTTER





Chamfering & Deburring Machine



VCF-500 SPMN 1203
Accessory: Side Mill Cutter Insert SPUN 422



VCF-500W
Accessory: Grinding Wheel
125Ø x 50 x 31.75Ø



VCF-500F
Accessory: Face Milling Cutter
Insert SEKN 1203

ORDER NO.	CODE NO.
VCF-500	1023-001
VCF-500W	1023-002
VCF-500F	1023-003

PRACTICAL

- A. UNIVERSAL APPLICATION.
- B. SIMPLIFIED OPERATION.
- C. FAST-ACCURATE-RATIONAL
- D. TIME SAVED.

FEATURES FOR VCF-

1. Simplified operation, suitable for unskilled personnel.
2. Easily to be bevelled for any length made of steel, cast iron, nonferrous metals, plastics, acrylic etc.
3. 500 : With exchangeable carbide inserts, knife can be changed easily to decrease cost and increase working ability.
4. 500W: With taper wheel or flange hot-processed parts also can be bevelled or chamfered.
5. 500F : Working base on surface milling principles, the deburring processing surface is same as the milling machine surface.

TECHNICAL DATA

Space requirement	500	500W	500F
	500X320m/m	500X440m/m	500X220m/m
Weight	29kgs	31kgs	31kgs
Voltage	3Ø220V or 1Ø110V/220V 50HZ/60HZ		
Motor output	0.7KW		
Speed	3500 r. p. m		
Lenght of guide rails	500m/m (Changable)	500m/m (Changable)	500m/m (Changable)
Height of bevel	0-3m/m		
Bevel angle	15° ~45° (Changable)	45°	45°

PLEASE NOTIFY VOLTAGE & PHASE, WHEN YOU ORDERING.
C.E MARK REQUESTED



Chamfering & Deburring Machine



VCF-500S
Accessory: Sanding Disc
165Ø x 22Ø

ORDER NO.	CODE NO.
VCF-500S	1023-004
VCF-600	1023-005
VCF-700	1023-006

PRACTICAL

- A. UNIVERSAL APPLICATION.
- B. SIMPLIFIED OPERATION.
- C. FAST-ACCURATE-RATIONAL
- D. TIME SAVED.



VCF-600
Insert SPMW 321
ZSPMW 090308

FEATURES FOR VCF-

1. 500S : Uses sanding disc, can debur soft and rigid materials.
2. 600 : Easy to carry and time-saving. suitable for heavy workpiece which can't be easily moved. The tools can be chamfered 0-3mm bevel angle, radius, arc angle, irregular shape, straight line, outer curve and etc.
3. 700 : The machine is used to carry out chamfering operations on any kind of ferrous material in particular steel and cast iron. Equipped with square-shaped tungsten carbide inserts-12. 7x12. 7x3.18 ISO 1203 SPUN. Simplified operation suitable for unskilled personnel. 3Ø220V/3Ø380V

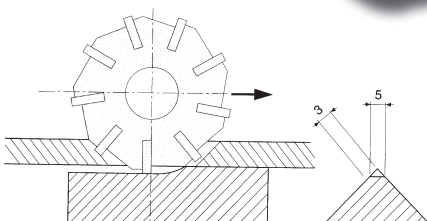


VCF-700

TECHNICAL DATA

Space requirement	VCF-500S	VCF-600	VCF-700
	330X410	380X130	360X200X260
Weight	27kgs	3.7kgs	13kgs
Voltage	3Ø220V or 1Ø110V/220V	3Ø380V/415V	50HZ/60HZ
Motor output	0.7KW		0.37KW
Speed	3500 r. p. m	12000 r. p. m	3500 r. p. m
Length of guide rails	320m/m	100m/m	200m/m
Height of bevel	0-3m/m	0-3m/m	0-7m/m
Bevel angle	45°	45°	15° ~45° Adlutable

PLEASE NOTIFY VOLTAGE & PHASE, WHEN YOU ORDERING.





Ejector Pin Cutting-off Machine

A PRECISE & SHARP CUTTING TOOL FOR MOULD MAKING LINE

ORDER NO. VEC-100

CODE NO. 1024-001



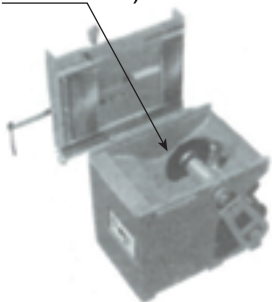
FEATURES

1. Moveable shaft bearing easy operation, safety.
2. For cutting ejector pin of mould or machine key, round rod.
3. Heat-Treatment materials. Good-Looking cutting surface of stainless steel.
4. Handle device according law of lever, it's easy to move on.
5. Cause no vibration, no dust and noiseless.
6. Easy to exchange the emery wheel.

ABLE TO CUT ALL THE MATERIAL WITH PLANE SURFACE ALMOST

STANDARD ACCESSORIES

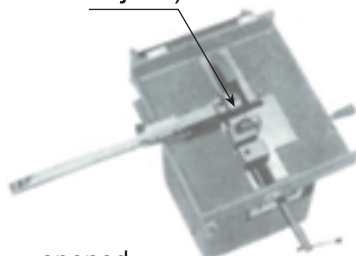
Emery wheel (Ø150X1X19.05mm) 5 PCS



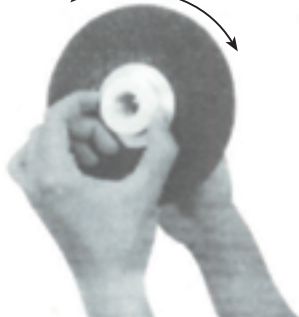
EMERY WHEEL ASSEMBLY BY HAND

LARGE & SMALL V SLOT

(For clamping round object)



opened
locked tightly



SPECIFICATION

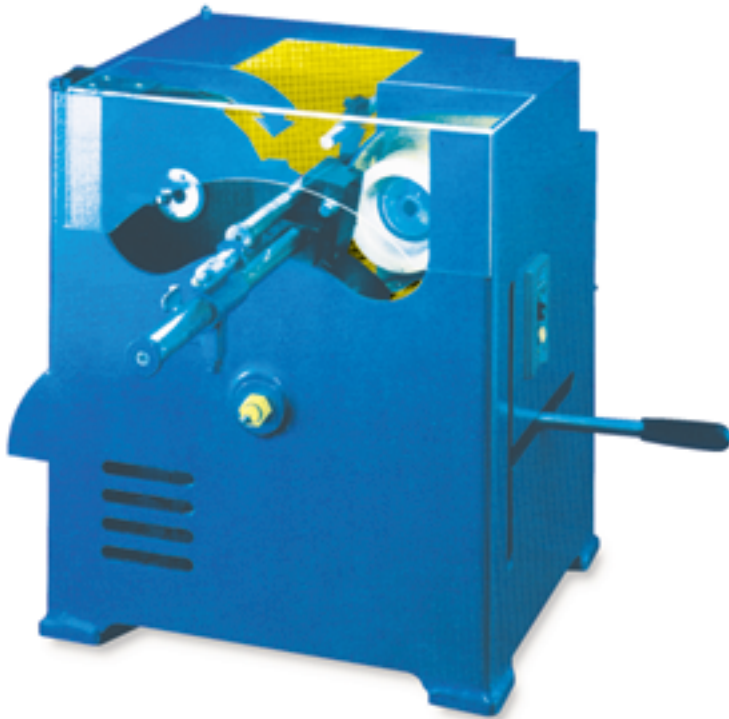
Unit:mm

MAX.CUTTING CAPACITY	Ø25x300L
CUTTING TOLERANCE	20 ± 0.10MM
EMERY WHEEL	150MM(O.D.)
	1MM(THICK)
	19.05MM(HOLE)
R.P.M	3600
MOTOR	1/2HP
MEASURE RULE	300MM
WEIGHT (APPROX.)	94KGS
MACHINE SIZE	620X420X450MM
PACKING SIZE	720X520X600MM

PLEASE NOTIFY THE VOLTAGE & PHASE, WHEN YOU ORDERING.



Rods Precision Cutting-Off And End Surface Grinding Machine



ORDER NO.	CODE NO.
VEC-300G	1024-010
VEC-500G	1024-011
VEC-600G	1024-012

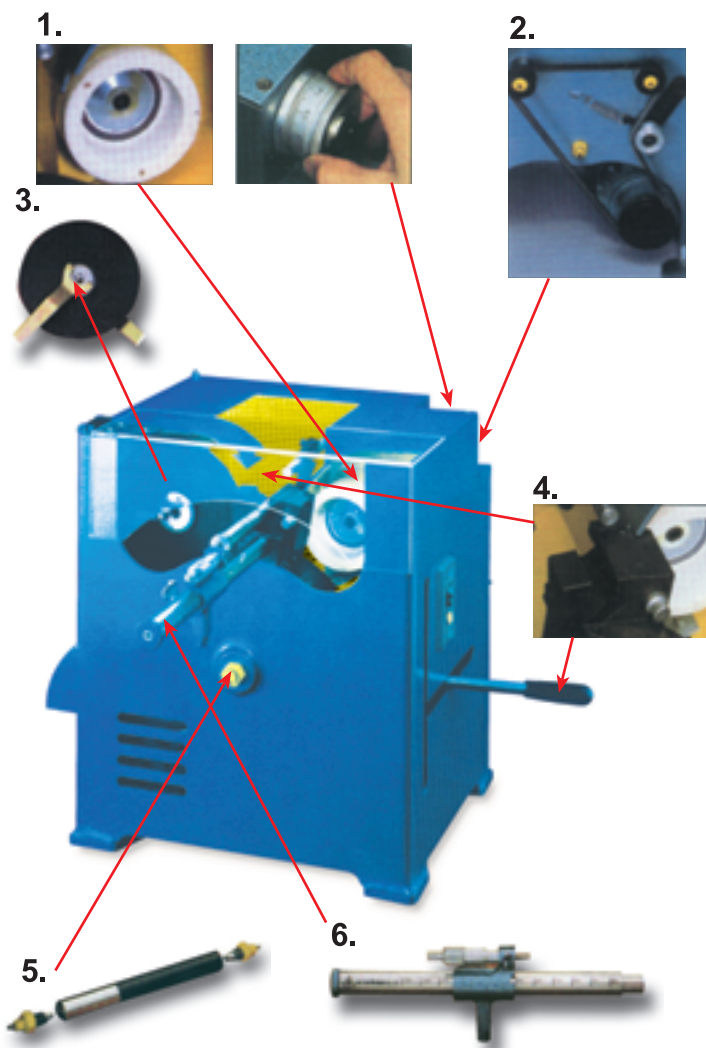
FEATURES

1. During operation, the grinding sander may be micro adjusted and repaired without changing its dimensions.
2. The tightness of belt may be automatically adjusted and controlled (the larger the resistance, the tighter the belt.)
3. The dimensions precision of cutting off the length of working piece are not subject to the effect of the difference of thickness of cutting -off sander piece.
4. The rapid chuck is used to hold the working piece in place, opening or closing it is very quick, and $\varnothing 1-25\text{mm}$ is the same.
5. When operation, a shaft with two tapered ends is used for transmission and characterized by high stability low wearing rate and long life.
6. The rapid positioning rule is in the unit of 20mm and provided with a micro rule (0mm to 25mm) of which the zeroing point is the dimensions at the rapid positioning point.
7. The minimum of cutting length is 60mm

SPECIFICATION

Cut - off precision	25m/m \varnothing x 300m/m ± 0.01
Right - angle precision	25m/m \varnothing x 90 ⁰ ± 0.01
Cut - off sander lamina	1m/m t x 180m/m \varnothing (Hole) 31.8m/m \varnothing
Grinding sander	WA46K x 100 x 50 x 20
R.P.M.	3600
Motor	3/4HP 110/220V 1 or 3 phase
Capacity	300m/m(500mm)(600mm)
Weight(Approx.)	108.6Kgs(109.4Kgs)(110.5Kgs)
Machine Size	L430m/m x W360m/m x H500m/m

- The length of measure: 300mm is for VEC-300G
500mm is for VEC-500G
600mm is for VEC-600G
Except the measure rule length is different, all items of body are same.
- Please notify the voltage & phase, when you ordering





Dustproof Halogen Lamp UNIVERSAL TYPE

- Fitted with coil transformer resisting unstable voltage.
- Long service life.



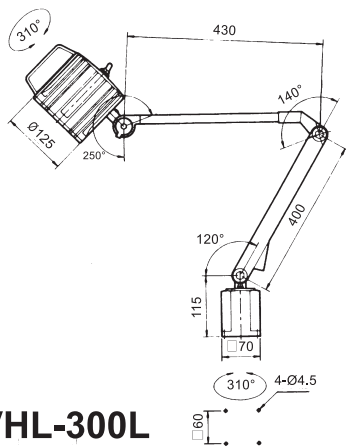
VHL-300L



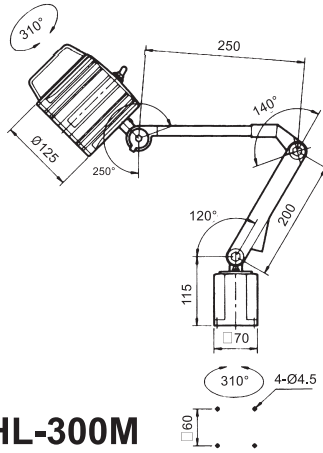
VHL-300M



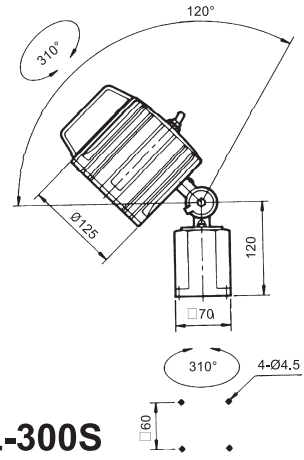
VHL-300S



**VHL-300L
LONG ARM**

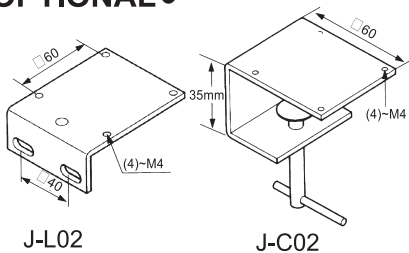


**VHL-300M
MEDIUM ARM**



**VHL-300S
SHORT ARM**

• **OPTIONAL** •



- **MOUNTING ANGLE PLATE J-L02**
- **MOUNTING CLAMP J-C02**

Totally enclosed lighting head provides well prevention for explosion, dust, coolant, and lubricants.

Uses efficient quartz halogen bulb, great light output, soft illuminating without irritating to the eyes.

Unit:mm

ORDER NO.	ARM LENGTH L x l	WEIGHT (kg)	CODE NO.
VHL-300L	430X400	3.5	1025-001
VHL-300M	250X200	3.2	1025-002
VHL-300S	1 JOINT	2.4	1025-003
J-L02		0.4	1025-004
J-C02		0.4	1025-005

FEATURES

- Coil transformer built in base for directly connect to voltage of Ac power. (110V, 220V, 380V.....)
- Specify voltage as desired when ordering.
- It accepts bulb 50W.
- Furnished with 1.8 meter cord with plug.



Dustproof Halogen Lamp UNIVERSAL TYPE

- Fitted with coil transformer resisting unstable voltage.
- Long service life. • With Water proof articulated arm.
- Round tube arm provides great lighting angles.



VHL-300LR



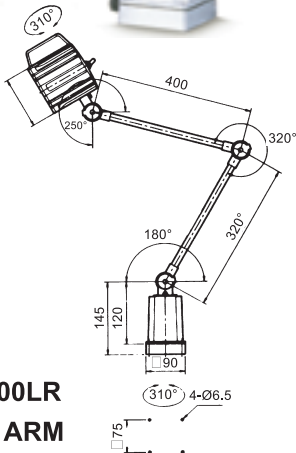
VHL-300MR



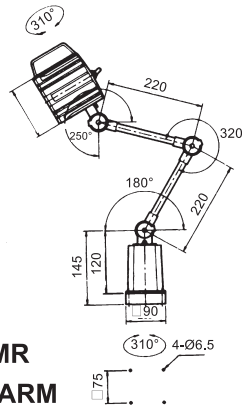
VHL-300SR



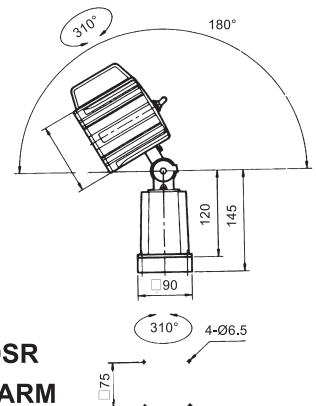
VHL-300 1/2MR



VHL-300LR
LONG ARM

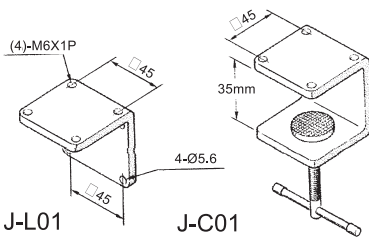


VHL-300MR
MEDIUM ARM



VHL-300SR
SHORT ARM

• **OPTIONAL** •



- **MOUNTING ANGLE PLATE J-L01**
- **MOUNTING CLAMP J-C01**

Totally enclosed lighting head provides well prevention for explosion, dust, coolant, and lubricants. Uses efficient quartz halogen bulb, great light output, soft illuminating without irritating to the eyes.

Unit:mm

ORDER NO.	ARM LENGTH L x l	WEIGHT (kg)	CODE NO.
VHL-300LR	400X400 (With Water Proof)	4.8	1025-010
VHL-300MR	200X200 (With Water Proof)	4.5	1025-011
VHL-300SR	1 JOINT (With Water Proof)	3.5	1025-012
VHL-300 1/2MR	200 (With Water Proof)	4.3	1025-013
J-L01		0.4	1025-014
J-C01		0.4	1025-015

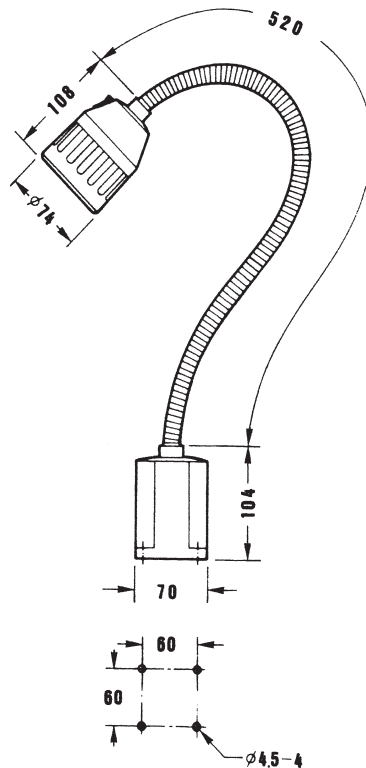
FEATURES

- Coil transformer built in base for directly connect to voltage of Ac power. (110V, 220V, 380V.....)
- Specify voltage as desired when ordering.
- It accepts bulb 50W,55W,70W.
- Furnished with 1.8 meter cord with plug.



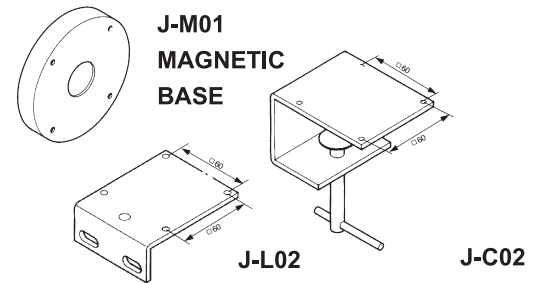
Quartz Halogen Lamp

- Gooseneck arm for smooth lighting angle adjustment.
- Lighting reaches any direction.



ORDER NO.	WEIGHT (kg)	CODE NO.
VHL-20FT	1.6	1025-020
VHL-20F	1.3	1025-021
J-M01	0.46	1025-006
J-L02	0.4	1025-004
J-C02	0.4	1025-005

• OPTIONAL •



- MOUNTING CLAMP J-C02
- MOUNTING ANGLE PLATE J-L02

VHL-20FT SERIES

- Engineering plastic shade and base provides complete insulation for maximum operator safety.
- Power source available: Any voltage on customer's request. Such as 110V, 220V, 240V, 380V, 415V.
- Transformer built in base.
- Accept 20,35 and 50 watt bulb. Included with 20 watt bulb, 35 and 50 watt bulb on request.
- Furnished with 1.8 meter (70") cord.
- Available with magnetic base.
- Engineering mounting angle plate. (optional)
- Double shades designed permits fast heat dissipation.

VHL-20F SERIES

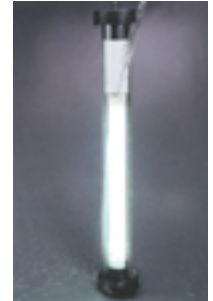
- The quartz halogen lamp has great light output, soft illuminating without irritating to the eyes.
- Low voltage 12 or 24 volt operation without danger of electric shock.
- The articulated arm provides vibration resistance performance. Articulated arm.
- Use top quality electric components.
- Accept 20,35,50 watt bulb. Included with 20 watt bulb, 35 and 50 watt bulb on request.
- Complete with 1.8 meters (70") cord.
- Economical model, jet quality constructed. Ideally suited to machine tools and machinery without big working area.
- Engineering plastic shade and base provides complete insulation.



D SERIES



DB SERIES



• Outstanding Water-proof Performance

Separate ballast series

ORDER NO.	LAMP LENG	WATT	DIA	WEIGHT (kg)	CODE NO.
VHL-W10D	518m/m	10	70mm	3.2	1025-030
VHL-W15D	632m/m	15	70mm	3	1025-031
VHL-W18D/PL	425m/m	18	70mm	2	1025-032
VHL-W20D	765m/m	20	70mm	3.6	1025-033
VHL-W36D/PL	621m/m	36	70mm	2.9	1025-034
VHL-W40D	1835m/m	40	70mm	3.5	1025-035

Built-in ballast series

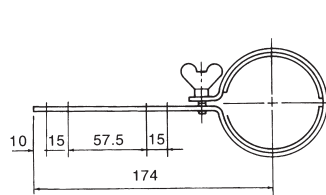
ORDER NO.	LAMP LENG	WATT	DIA	WEIGHT (kg)	CODE NO.
VHL-W10DB	611m/m	10	70mm	3.2	1025-040
VHL-W15DB	717m/m	15	70mm	3	1025-041
VHL-W18DB/PL	525m/m	18	70mm	2	1025-042
VHL-W20DB	861m/m	20	70mm	3.6	1025-043
VHL-W36DB/PL	715m/m	36	70mm	2.9	1025-044
VHL-W40DB	1529m/m	40	70mm	3.5	1025-045

FOUR MODELS TO CHOOSE FORM 10, 15, 20, AND 40 WATT. OUTSTANDING FEATURES

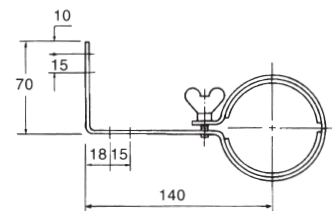
- Suited for machine lighting. indoor and outdoor lighting.
- Cool lighting performance.
- Anti-crack lamp.
- Swivelling mounting bracket (optional).
- Accommodates power source 110V or 220V. single voltage only.
- Specify HZ and voltage when ordering.
- The outer tube is manufactured from acrylic. When requested. the glass outer tube is available.
- Furnished with 1.8 meter (70") cord.

OPTIONAL

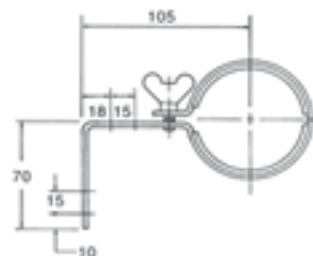
ORDER NO.	WEIGHT(kg)	CODE NO.
JF-110	0.3	1025-050
JF-111	0.3	1025-051
JF-112	0.3	1025-052
JF-115	0.1	1025-053



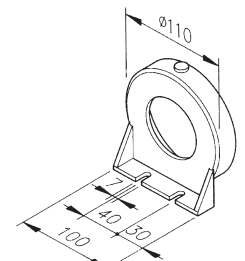
• JF-110
MOUNTING FIXTURE



• JF-111
MOUNTING FIXTURE



• JF-112
MOUNTING FIXTURE



• JF-115
MOUNTING STAND



Magnifying Fluorescent Work Light



**VHL-30TEB
BENCH TYPE**



**VHL-30TEBII
BENCH TYPE**

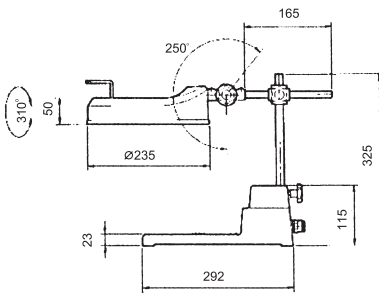


VHL-30MEB

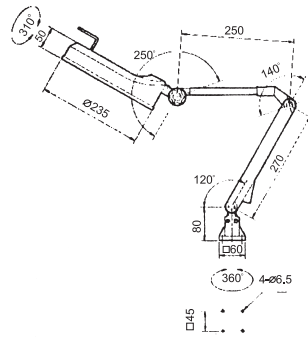


3X auxiliary lens(optional)

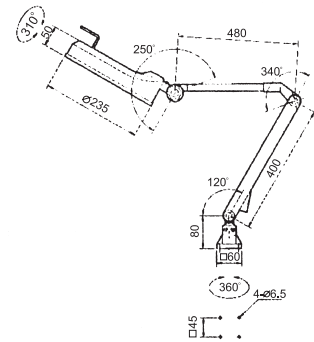
VHL-30LEB



VHL-30TEB VHL-30TEBII BENCH TYPE

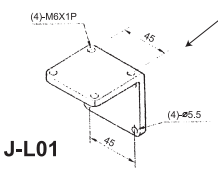


VHL-30MEB MEDIUM ARM



VHL-30LEB LONG ARM

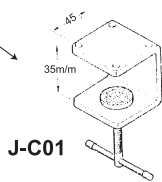
● **OPTION**



J-L01

● MOUNTING ANGLE
PLATE

● **STANDARD**



J-C01

● MOUNTING CLAMP

● **OPTIONAL**

ORDER NO. VHL-3X
3X magnifier lens

ORDER NO.	WEIGHT (kg)	CODE NO.
VHL-30TEB	4	1025-060
VHL-30TEB II	4	1025-061
VHL-30MEB	3.5	1025-062
VHL-30LEB	3.5	1025-063
J-L01	0.4	1025-014
VHL-3X	0.4	1025-065

* All work lights are with 3X magnifier lens, If you need 6 times, you have to choose VHL-3X extraly.

VHL-30TEB

- Bench type model.
- Constructed with a wide base for placing object, allowing it especially suited for inspection lighting.
- Electronic ballast is built in arm.
- Accepts 22 watt fluorescent tube.
- 110V, or 220V operation. Supplied single voltage only. Specify desired voltage when ordering.
- Furnished with 1.8 meter cord with plug. Extended cord length is available when required.

VHL-30TEB II

- Same as mode VHL-30TEB, but except with acrylic board on base for lighting through requirement.

VHL-30 MEB

- Medium arm model.
- Electronic ballast is built in arm.
- Accepts 22 watt fluorescent tube.
- 110V, or 220V operation. Supplied single voltage only. Specify desired voltage when ordering.
- Furnished with 1.8 meter cord with plug. Extended cord length is available when required.

VHL-30 LEB

- Long arm model.
- Electronic ballast is built in arm.
- Accepts 22 watt fluorescent tube.
- 110V, or 220V operation. Supplied single voltage only. Specify desired voltage when ordering.
- Furnished with 1.8 meter cord with plug. Extended cord length is available when required.

Designed with a magnifier lens on luminaire head giving 3 times of magnification 3x than acrual object.

The fluorescent lighting provides day light effect without flash.



Water-Proof Halogen Lighting Lamp



400 SERIES

VHL-400L

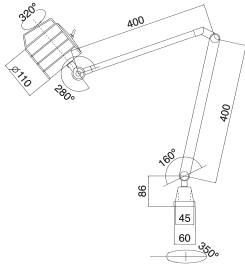


500 SERIES

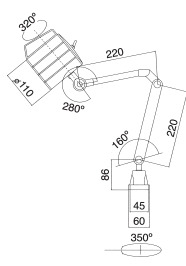
VHL-500S



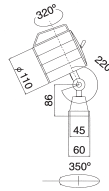
VHL-500L



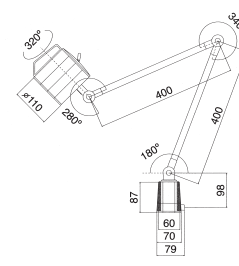
VHL-400L



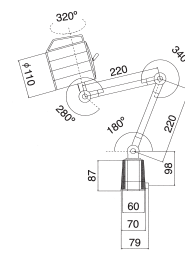
VHL-400M



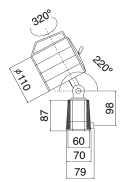
VHL-400S



VHL-500L

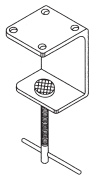


VHL-500M

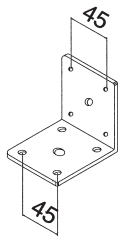


VHL-500S

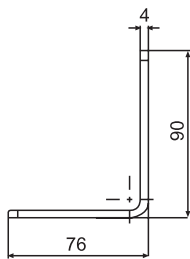
OPTIONAL



V-20



V-21



V-26

WATER-PROOF HALOGEN LIGHTING LAMP (VHL-400L SERIES)

LIGHTING HEADS OF THESE SERIES WITH SPECIFIC FEATURES OF WATER-PROOF, DUST-FREE, ANTI-LUBRICAT, ANIT-CUTTING OIL, ETC. THE LIGHTING UNITS ADOPTED WITH A BULB (24V/55W). CUSTOMERS' SPECIFICATIONS ALSO ACCEPTED.

ORDER NO.	CODE NO.
V-20	1025-106
V-21	1025-107
V-26	1025-108

ORDER NO.	VOLTS	BULB	ARM LENGTH L x l	OPTIONAL ACCESSORIES	WEIGHT (N.W.)	CODE NO.
VHL-400L	12V 55W - 24V 70W	12V 55W - 24V 70W	400X400	V-20 / V-21	2.45	1025-100
VHL-400M	12V 55W - 24V 70W	12V 55W - 24V 70W	220X220	V-20 / V-21	2.17	1025-101
VHL-400S	12V 55W - 24V 70W	12V 55W - 24V 70W		V-20 / V-21	1.33	1025-102
VHL-500L	12V 55W - 24V 70W	12V 55W - 24V 70W	400X400	V-20 / V-21	2.85	1025-103
VHL-500M	12V 55W - 24V 70W	12V 55W - 24V 70W	220X220	V-20 / V-21	2.33	1025-104
VHL-500S	12V 55W - 24V 70W	12V 55W - 24V 70W		V-20 / V-21	1.44	1025-105

VHL-400L

- Water-proof lighting head with reinforced glass resists big temperature fluctuations of cutting oil.
- 12V/24V Voltage.
- Flexible Arm (round arm), 420x420mm
- With universal Lighting Base.
- Specifications of Bulb: 24V/70W.
- Different conditions demand different lighting bases. Selected rectangular L-type (#V-20) base or C-type (#V-21) base.

VHL-400M

- Performance & features: same as , but with shorter flexible arm at 220x185mm.

VHL-400S

- Specially designed to fit particular locations and spaces, The flexible arm is very short.

VHL-500L

- Performance & features of these series: same as . The main difference is that VHL-500L can be installed with a shorter arm, and connected with AC current below 240V. Please indicate the required voltage when placing the orders to us.
- Specifications of the bulb: 12V/50W

VHL-500M

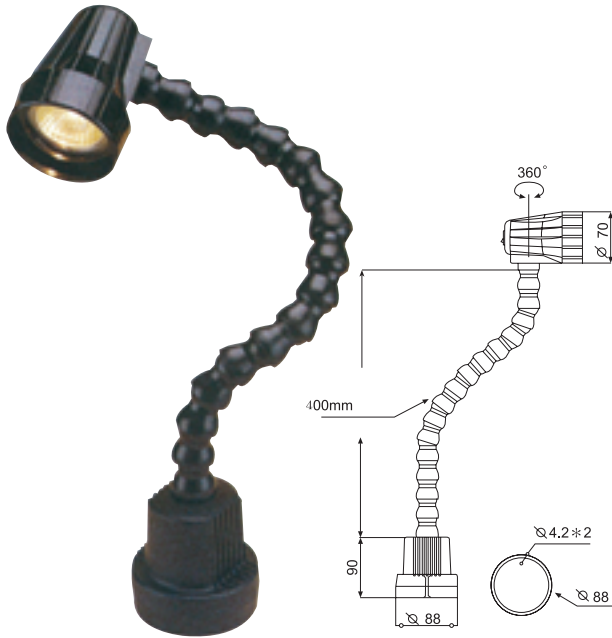
- Same specifications as VHL-500L, but with shorter flexible arm at 220x220mm.

VHL-500S

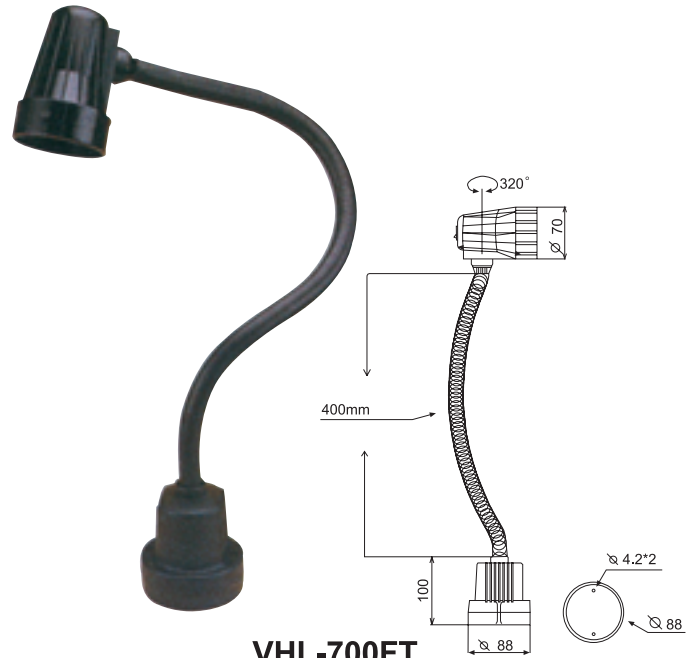
- Specially designed to fit particular locations and spaces. The flexible arm is very short.



Quartz Halogen Lamp WITH TRANSFORMER



VHL-600FT



VHL-700FT

FEATURES

- VHL-600FT, VHL-700FT type ideal for work-place lighting if bright concentrated light is required in performance not too large area illumination. It is with transformer.
- Suitable for use at small machine such as CNC engraving machine, sewing machine, lathe machine, working benches and working table.....etc.
- VHL-700FT with flexible arm.

ORDER NO.	VOLTS	BULB	ARM LENGTH L x l	OPTIONAL ACCESSORIES	WEIGHT (N.W.)	CODE NO.
VHL-600FT	110V - 220V	12V 20W	400	M-23	1.9	1025-109
VHL-700FT	110V - 220V	12V 20W	400	M-23	1.8	1025-110

V-B15		12V 50W / 24V 50W			0.009	1025-111
V-B16		12V 55W / 24V 70W			0.009	1025-112
V-T17	415V - 12 / 415V - 24 380V - 12 / 380V - 24 230V - 12 / 230V - 24				1.47	1025-113
V-T18	415V - 12 / 415V - 24 380V - 12 / 380V - 24 230V - 12 / 230V - 24				1.4	1025-114
M23						1025-115

V-T17



TRADITIONAL
TRANSFORMER V-T17
SUITABLE FOR
VHL-400 SERTES
VHL-500 SERTES

V-T18



EXTERIOR KUST DUST-
FREE TRANSFORMER
V-T18 Voltage below
415V. Cane be installed
anywhere.
Dust-Free, leakage-proof
and oil-proof.

V-B15



V-B15
12V/70W,
24V/50W, 12V/50W
Those bulb for VHL-400,
VHL-500 series

V-B16



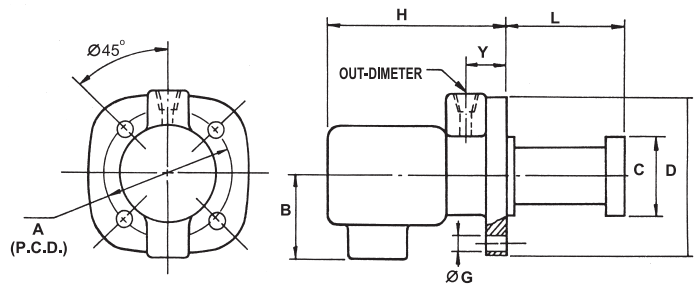
V-B16
24V/70W, 12V/55W
Those bulb for VHL-400,
VHL-500 series



1/8 HP. Under Water Coolant Pump

FEATURES

This is the pump in best quality with anti-rust treatment, use high grade material for the complete set and has been duly instected in five steps by precision electron device.

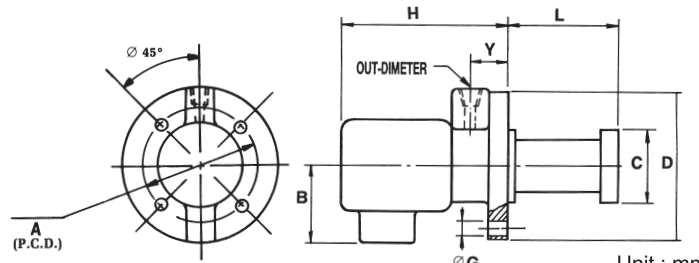


POWER	A	B	C	D	G	H	Y	OUT-DIMETER
1/8HP	128±0.2	105	∅92	∅155	∅8	160	19	PT 3/8

ORDER NO.	TYPE	POWER	Lm/m	PUMPING WATER		WEIGHT (kg)	CODE NO.
				1 m/min	2 m/min		
VWP-0810	UNDER WATER	1/8HP	100	27ℓ-28ℓ	25ℓ-26ℓ	5	1026-001
VWP-0813			130			5.4	1026-002
VWP-0815			150			5.7	1026-003
VWP-0818			180			5.7	1026-004



1/4 HP. Under Water Coolant Pump

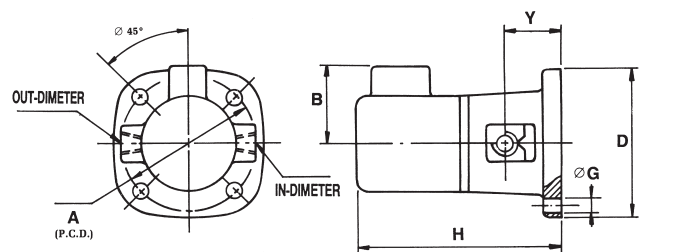


POWER	A	B	C	D	G	H	Y	OUT-DIMETER
1/4HP	158±0.2	125	∅122	∅180	∅8	180	26	PT 1/2

ORDER NO.	TYPE	POWER	Lm/m	PUMPING WATER		WEIGHT (kg)	CODE NO.
				1 m/min	2 m/min		
VWP-0415	UNDER WATER	1/4HP	160	74ℓ-76ℓ	71ℓ-72ℓ	11	1026-010
VWP-0418			180			11	1026-011
VWP-0420			200			11	1026-012
VWP-0424			240			12.5	1026-013
VWP-0427			270			13	1026-014



Self Priming Coolant Pump 1/8 HP. 1/4 HP



POWER	A	B	D	G	H	Y	IN-DIMETER	OUT-DIMETER
1/8 HP	140±0.2	105	165	∅8	195	50±0.5	PT 3/8	PT 3/8
1/4 HP	185±0.2	125	225	∅8	240	65±0.5	PT 1/2	PT 1/2

ORDER NO.	TYPE	POWER	PUMPING WATER		WEIGHT (kg)	CODE NO.
			1 m/min	2 m/min		
VWP-089	SELF PRIMING	1/8HP	26ℓ-27ℓ	24ℓ-25ℓ	6	1026-020
VWP-049		1/4HP	73ℓ-75ℓ	70ℓ-71ℓ	11	1026-021



Coolant Pump Kits

1/8 HP & 1/4 HP



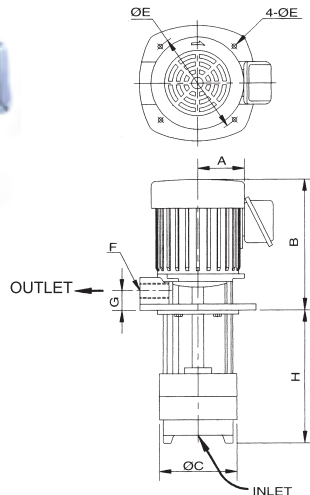
SET INCLUDING

1. Coolant pump
2. Coolant tank
3. Connecting cable (w/plug for 1ph)
4. Coolant hose dit w/magnetic base
5. Flexible conveying hose
6. Drain hose
7. Tool kits
8. ON/OFF switch (for 1ph)

ITEM	ORDER NO.	VWP- 81-150K	VWP- 41-180K
Coolant pump (HPxH)		1/8 HP X 150mm	1/4 HP x 180mm
Tank size (LxWxH)		350x250x185mm	500x350x200mm
volume of coolant tank		16ℓ	35ℓ
Connecting cable		2000mm	2000mm
Coolant hose kits w/magnetic base (ØxL)		1/4"x330mm	3/8"x360mm
flexible conveying hose (xL) Ø		3/8"x1500mm	3/8"x1500mm
Drain hose (ØxL)		1"x300mm	1-1/4"x400mm
Weight		10kgs	29kgs
CODE NO.		1026-030	1026-031



Under Water Type Multi-stage High Pressure Coolant Pump



SPECIAL FEATURES

- Discharge available in either N.P.T / P.T.
- Heavy duty bearings greased for long life and easy maintenance.
- Multi-stages., up to 6 stages for pressure over 9kg/cm² staggered discharge ports equalize radial loads for increasing pump life.
- Stainless steel made enclosed impeller., increasing pump efficiency and flow volumn.
- Rigid and strong one-piece shaft.

SPECIFICATION

ORDER NO.	STAGE	HP	A	B	C	D	E	F	G	H	PRESSURE kg/cm ² (PSI)	VOLUMETRIC DELIVERY (ℓ / min)		DELIVERY HEAD(m)	WEIGHT (kg)	CODE NO.
												EMULSION	COOLING OIL			
VWP-MS2-180	2	3/4	135	255	135	9	170	3/4" or 1"(option)	28	180	3 (42)	140	116	30	15	1026-040
VWP-MS2-250										250						
VWP-MS3-200	3	1	135	275	135	9	170	3/4" or 1"(option)	28	200	4.5 (64)	140	116	45	16	1026-042
VWP-MS3-270										270						
VWP-MS4-230	4	1 1/4	135	275	135	9	170	3/4" or 1"(option)	28	230	6 (85)	140	116	60	18	1026-044
VWP-MS4-260										260						
VWP-MS5-210	5	1 1/2	135	275	135	9	170	3/4" or 1"(option)	28	210	7.5 (106)	140	116	75	20	1026-046
VWP-MS5-250										250						



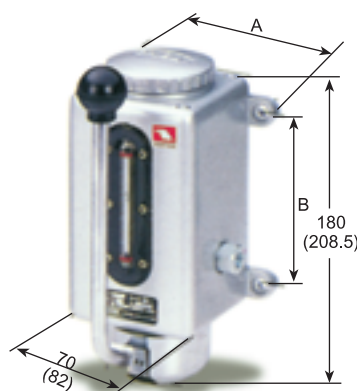
Hand Lubrication Pumps



LT - 4

• Rattling hand pump LT model Rattle the lever of the pump reiteratively and the oil will be pressured into the main pipe. When the lever is released, it will return to the original position automatically.

ORDER NO.	Discharged amount (c.c/st)	Max. discharged pressure (kg/cm ²)	capacity (c.c)	Efficient capacity (c.c)	WEIGHT (kg)	CODE NO.
LT- 4	4	15	230	200	0.8	1026-050

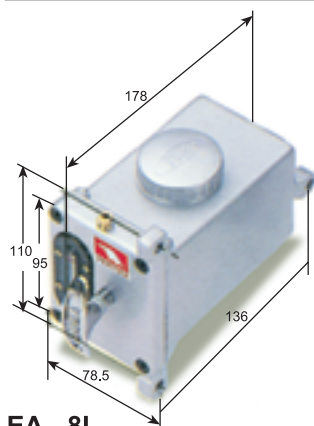


LT - 6

• Rattling hand pump LT model The discharged amount and pressure are higher than those of LT-4 and the operation method is just the same.

ORDER NO.	LT-6	LT-8	LT-8A
Size	85x85	98x107	100x110
Weight	1.2kg		

ORDER NO.	Discharged amount (c.c/st)	Max. discharged pressure (kg/cm ²)	capacity (c.c)	Efficient capacity (c.c)	CODE NO.
LT- 6	6	15	350	250	1026-061
LT- 8	8	15	600	400	1026-062
LT- 8A	8	15	650	450	1026-063



EA - 8L

• Pulling type hand pump EA model Pull the lever of the pump reiteratively and the oil will be discharged at the up or down port.

ORDER NO.	Discharged amount (c.c/st)	Max. discharged pressure (kg/cm ²)	capacity (c.c)	Efficient capacity (c.c)	WEIGHT (kg)	CODE NO.
EA-8 R	8	3.5	600	500	1	1026-070
EA-8 L						1026-071

The installation machine could be selected either the right side marked "R" or the left side marked "L"



LA - 8L

• Depressing type hand pump model LA Depress the lever repeatedly and the oil will be pressured when it is depressed. Only after is released the lever, the pressured oil will be discharged.

ORDER NO.	Discharged amount (c.c/st)	Max. discharged pressure (kg/cm ²)	capacity (c.c)	Efficient capacity (c.c)	WEIGHT (kg)	CODE NO.
LA-8R	1~8	5	1000	800	1.3	1026-082
LA-8L						1026-083

The installation position of a machine could be selected either the right side marked "R" or the left side marked "L"



SMA MODEL (AUTOMATIC)

• Electrical automatic pump SMA model The out standing performances of SMA models belong to intermittent oil supply pumps whose specification are classed into four kinds by the intermittent time and the discharged amount is adjustable within the range of 1~3c.c.

ORDER NO.	Intermittent time (min)	Discharged amount (c.c/st)	Max. discharged pressure (kg/cm ²)	Capacity (ℓ)	WEIGHT (kg)	CODE NO.
SMA-3	5, 10, 15 30, 60	1~3	3	2	1.8	1026-090
SMA-6		3~	3	2		1026-091
SMA-8.5		4~8.5	3	2		1026-092

Motor's voltage is AC 110V or 220V.



Coolant Pump Kits

COOLANT SYSTEM



SET INCLUDING

1. Coolant pump
2. Coolant tank
3. Connecting cable
4. Coolant hose
5. Flexible conveying hose
6. Drain hose
7. Tool kits
8. ON/OFF switch (for 1ph)



ORDER NO.	COOLANT PUMP	TANK VOLUME	LIET / METER	DIMENSION LXWXH	WEIGHT	CODE NO.
VWP-81-100	1/8 HP, 1 PHASE	9L	2.5M	390mmX260mmX320mm	GROSS wt. 8.5kgs NET wt. 7.5kgs	1026-032

FEATURES

- It can be applied to drilling machine drilling & milling machine, small size lathe, or any other machines that need cooling and washing.