

To Be The Most Professional
Responsible Enterprise in China



BAITAI

HEAT TREATMENT TECHNOLOGY



To Be The Most Professional
Responsible Enterprise in China



Yantai Baitai Heat Treatment Technology Co.,Ltd.

Address: No.10 Zhongshan Street ETDZ Yantai City , Shandong ,China

Ph: +86 185 0535 1299

Tel: +86-0535-695 8693 Fax: +86-0535-695 8693

Http://www.hydraulicbreaker.cc

info@hydraulicbreaker.cc



www.hydraulicbreaker.cc



COMPANY INTRODUCTION

Yantai Baitai Heat Treatment Technology Co.,Ltd. is founded in 2002 and the leading manufacturer of hydraulic breakers and excavator attachments.

The factory is located in Yantai city with an area of 10000 square meters manufacturing and heat treatment workshops separately to ensure the parts with durable high quality. Over 100 employees, including Management/ R&D/Purchasing/Production/Quality Control and Finance Departments. Registered "MAXROKER" brand, OEM/ODM is accepted.

Yantai Baitai as the Excavator Front-end Equipments provider, products including Hydraulic Breaker, Quick Hitch, Hydraulic Compactor, Log/Stone Grapple, Ripper, and other excavator attached machines. With independent import and export rights and got /ISO9001/ ISO16949/CE Certifications, also got good praises from Domestic and Oversea Partners.

With imported High precision CNC machines and professional R&D team, Yantai Baitai sincerely invite you and your friends to join us to be the Professional and Responsible Enterprise.

JOIN US, TO CREAT A BETTER FUTURE TOGETHER!



MANUFACTURING CAPACITY



TEMPERING



Box-type heat treating multi-purpose furnace

HEAT TREATMENT

Heat-treating process is the most important quality control process for the key mechanical parts.

The usual methods of heat-treating ferrous metals (metals with iron) are **normalizing, carburizing/quenching, and tempering.**

Our hydraulic breaker parts eg. Cylinder, Front head, Back head, Piston, Bushing sets, etc. are all do the heat-treating by our own professional heat-treating facilities.

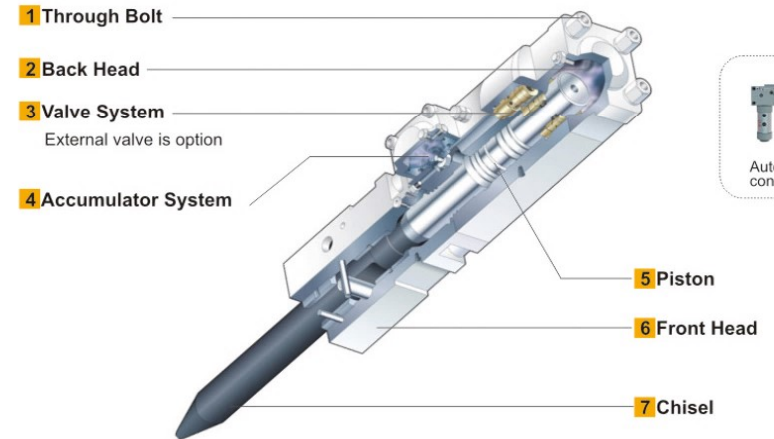
Good and professional heat-treating can ensure the hydraulic breakers with more higher quality, more durable, longer working life and stable working performance.



Continuous pusher type furnace



INTERNAL VALVE TYPE



1 Through Bolt

Four units of the bolts fix the important components onto the breaker and longest service life due to applied high-technology.

2 Back Head

The energy of piston stroke is accumulated due to charge nitrogen gas.

3 Valve System

The cylindrical control valve is built in the valve housing and it controls piston reciprocation.

4 Accumulator System

The minimum hydraulic breaker system enables the breaker to maximize efficiency for reciprocation of the piston where high and low tension circulates.

5 Piston

The piston is installed in the cylinder, and converts the oil pressure into the impact power to break rocks

6 Front Head

The front head supports the whole breaker. The thrust ring and the thrust bush prevents shock from the tool.

7 Chisel

Moil point: Soft, Non-abrasive rock, high penetration rate (concrete, tunnelling, trenching)

wedge point: Non-abrasive but ductile rock low or medium penetration rate (concrete, tunnelling, trenching, benching)

Cone point: Soft, Non-abrasive (concrete, tunnelling, trenching, benching)

Blunt point: Soft or hard but low medium abrasive rock (concrete, breaking boulders)

HYDRAULIC BREAKER

SIDE TYPE

TOP TYPE



Category	Unit	MR400	MR450	MR530	MR680	MR750	MR850
Carrier weight	ton(lbs)	0.8-2.5 (1,764-5,511)	1.2-3.0 (2,645-6,614)	2.5-4.5 (5,511-9,920)	4.0-7.0 (8,818-15,432)	6.0-9.0 (13,228-19,841)	7.0-14.0 (15,432-30,865)
Tool diameter	mm(inch)	Φ40(1.6)	Φ45(1.8)	Φ53(2.1)	Φ68(2.7)	Φ75(3.0)	Φ85(3.3)
Operating weight(side type)	kg(lbs)	77(169)	99(218)	132(290)	275(605)	407(895)	561(1,234)
Operating weight(top type)	kg(lbs)	99(218)	121(266)	148(326)	321(706)	413(909)	629(1,384)
Operating weight(box type)	kg(lbs)	113(249)	139(306)	168(370)	325(715)	418(920)	638(1,407)
Height	mm(inch)	1,135(44.7)	1,213(47.8)	1,317(51.9)	1,620(63.8)	1,899(74.8)	2,161(85.0)
Required oil flow	l/min(g/min)	15-30(4.0-8.0)	20-40(5.3-10.6)	25-50(6.6-13.2)	40-70(10.6-18.5)	50-90(13.2-23.8)	60-100(15.9-26.4)
Operating pressure	bar(psi)	90-120 (1,280-1,707)	90-120 (1,280-1,707)	90-120 (1,280-1,707)	110-140 (1,560-1,991)	120-150 (1,707-2,134)	130-160 (1,849-2,276)
Impact rate	bpm	800-1,400	700-1,200	600-1,100	500-900	400-800	400-800
Hose diameter	mm(inch)	1/2	1/2	1/2	1/2	1/2	3/4
Back head pressure	kg/cm ²	16	16	16	16	16±0.5	16±0.5
Accumulator pressure	kg/cm ²	/	/	/	/	/	/
Valve ass'y position		Internal	Internal	Internal	Internal	Internal	Internal

BOX TYPE



MR1000	MR1400	MR1500	MR1550	MR1650	MR1750
11.0-16.0 (24,251-35,274)	18-26 (39,683-57,320)	25-30 (55,116-66,139)	28-35 (61,729-77,162)	30-45 (66,139-99,208)	40-55 (88,185-121,254)
Φ100(3.9)	Φ140(5.5)	Φ150(5.9)	Φ155(6.1)	Φ165(6.5)	Φ175(6.9)
842(1,852)	1,950(4,290)	2,359(5,190)	2,655(5,841)	2,915(6,413)	4,167(9,167)
979(2,154)	2,050(4,510)	2,271(4,996)	3,059(6,730)	3,295(7,249)	4,216(9,275)
948(2,086)	1,978(4,352)	2,279(5,014)	2,896(6,371)	3,117(6,857)	4,390(9,658)
2,316(91.2)	2,813(110.7)	3,063(1120.6)	3,215(126.6)	3,475(136.8)	3,736(147.1)
80-110(21.1-29.1)	120-180(31.7-47.6)	160-180(2,276-2,560)	180-240(47.6-63.4)	200-260(50.8-68.7)	210-290(55.5-76.6)
150-170 (2,134-2,418)	160-180 (2,276-2,560)	160-180 (2,276-2,560)	160-180 (2,276-2,560)	160-180 (2,276-2,560)	160-180 (2,276-2,560)
350-700	350-500	300-450	300-450	200-350	200-350
3/4	1	1	1	5/4	5/4
16±0.5	16±0.5	16-18	16-18	20-22	24-26
/	/	60	60	65	65
Internal	Internal	Internal	Internal	Internal	Internal

HYDRAULIC BREAKER SPARE PARTS



Main body

Cylinder



Front head

Back head

Bracket bolts

Shaft sleeve



Piston

Bushing sets

External Valve Assembly

Main valve

Rod pin



N₂ Gauge

Chisel

Seal kits

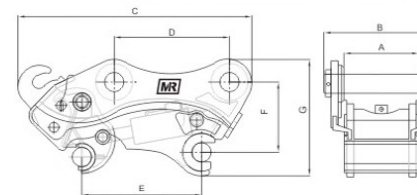
N₂ Bottle

QUICK HITCH

P TYPE



H TYPE



Category	Unit	MR-mini	MR-02	MR-04	MR-06	MR-08	MR-08S	MR-10	MR-17	MR-20
Suitable Excavator	ton	1-4	4-6	6-8	12-16	18-25	25-26	26-30	30-40	40-90
Overall length C	mm	300-450	520-600	580-650	760-830	920-970	970-1100	965-1150	1005-1200	1250-1400
Overall Weight B	mm	150-250	260-300	265-310	351-454	450-483	445-600	543-615	602-666	650-760
Overall Height G	mm	225-270	295-312	300-330	385-400	445-512	500-640	510-585	540-615	685-780
Forearm Open Width A	mm	82-180	155-172	181-205	230-317	290-345	300-350	345-425	380-480	420-520
Pin to pin Center Distance D	mm	95-220	220-275	290-350	350-400	430-480	450-505	485-530	520-630	620-750
Pin Diameter	mm	20-45	40-45	45-55	50-70	70-90	90	90-100	100-110	100-140
Retractable Distance of Oil Cylinder E	mm	95-200	200-300	300-350	340-440	420-510	450-530	460-560	500-650	640-700
Top to Bottom Pin Distance F	mm	170-190	200-210	205-220	240-255	300	320	350-370	370-380	400-500
Weight	kg	30-40	70-100	100-120	200-220	350-400	360-420	400-550	600-800	700-1000
Working Pressure	kg/cm ²	30-400	30-400	30-400	30-400	30-400	30-400	30-400	30-400	30-400
Necessity Flux	l	10-20	10-20	10-20	10-20	10-20	10-20	10-20	10-20	10-20

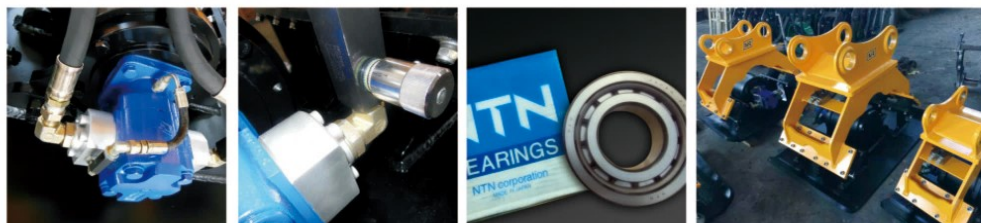
*Specific data can be adjusted according to different machines size to do customized manufacturing.

HYDRAULIC COMPACTOR



Category	Unit	MR-04	MR-06	MR-08	MR-10
Height	mm	750	930	1000	1100
Width	mm	550	700	900	900
Powder Of Impulse	ton	4	6.5	15	15
Vibration Frequency	rpm/min	2000	2000	2200	2200
Oil Flow	l/min	45-85	85-105	120-170	120-170
Operating Pressure	kg/cm ²	100-130	100-150	150-200	150-200
Bottom Measurement	mm	900*550	1160*700	1350*900	1350*900
Weight	kg	550-600	750-850	900-1000	1000-1100
Carrier	ton	4-10	12-16	18-24	24-30

Specific data can be adjusted according to different machines size to do customized manufacturing.



Original Imported Motors
To Be More Efficient And
Dense

Original Imported Valves
That Are Safe And Reliable
And Easy Control

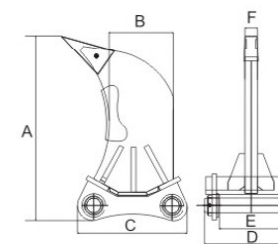
Imported Bearing To Be
More Lasting And Durable

LOG/STONE GRAPPLERS



Category	Unit	MR-02	MR-04	MR-06	MR-08	MR-10	MR-17
Max Jaw Opening	m/m	1300	1400	1800	2300	2500	2500
Oil Pressure	kg/cm ²	110-140	120-160	150-170	160-180	160-180	180-200
Necessity Flux	lpm	30-55	50-100	90-110	100-140	130-170	200-250
Cylinder Volume	ton	4.0*2	4.5*2	8.0*2	9.7*2	12*2	12*2
Weight	kg	320	390	740	1380	1700	1900
Carrier	ton	4-6	7-11	12-18	17-23	24-30	31-40

Specific data can be adjusted according to different machines size to do customized manufacturing.



RIPPER

Category	Unit	MR-06	MR-08	MR-10	MR-17	MR-20
A	mm	1150	1200	1450	1550	1650
B	mm	270	400	420	450	580
C	mm	550	665	735	820	980
D	mm	390	510	600	650	760
E	mm	265	335	420	470	580
F	mm	65	90	90	110	110
Weight	kg	300-400	550-650	600-700	700-850	800-1000
Carrier	ton	12-15	20-25	25-30	30-45	45-90

Specific data can be adjusted according to different machines size to do customized manufacturing.